



OPERATOR'S MANUAL

with Setup Instructions

FAST-Vac Grass Collection Systems

System Number:

5600021

5600022

5600023

5600024

5600025

5600026

5600027

5600030

IMPORTANT NOTE:

*These FAST-Vac Systems fit 2004
Model Year product and prior
equipped with the steel discharge
chute.*

Table of Contents

SAFETY RULES & INFORMATION	2
Safety Decals	3
GENERAL OPERATING INSTRUCTIONS	4
Before Operation	4
Mowing with the Double / Triple Catcher	4
After Operation	5
Storing the Grass Catcher	5
Mowing Without the Blower	5
INSTALLATION	6
48" & 52" Blower Mount & Drive Installation	6
61" Blower Mount & Drive Installation	10
Collector Installation	13
Weight Mount Installation	
1000Z Series / 2 Bag System	18
Weight Mount Installation	
1000Z Series / 3 Bag System	19
Weight Mount Installation	
IS1000Z Series / 2 Bag & 3 Bag Systems	20
Weight Mount Installation	
IS3000Z Series / 3 Bag System	21
Weight Mount Installation	
IS3000ZF & ZX Series / 3 Bag System	22
DISCHARGE CHUTE REATTACHMENT	23
Mowing Without the Blower	23
Reattaching the Discharge Chute	23




Safety Rules & Information



Read these safety rules and follow them closely. Failure to obey these rules could result in loss of control of unit, severe personal injury or death to you, or bystanders, or damage to property or equipment.

This mowing deck is capable of amputating hands and feet and throwing objects.

The triangle  in text signifies important cautions or warnings which must be followed.

GENERAL WARNINGS

- Know the mower controls, safety rules and how to stop quickly. **READ AND UNDERSTAND THE MOWER OPERATOR'S MANUAL.**
- Read and obey all safety decals.
- Wear appropriate ear, eye and breathing protection.
- Only allow responsible adults, who are familiar with the instructions, to operate the unit.
- Disengage the electric clutch (PTO). Shut off the engine and wait for all moving parts to stop before attaching, adjusting, or disconnecting any part of the collection system.
- Check the collection system to make sure it is bolted tightly to the rider.
- **DO NOT** operate the mower without either the entire grass catcher or the deflector in place.
- Turn off the PTO switch to disengage the blades when not mowing.
- **DO NOT** mow in reverse. Always look down and behind before and while travelling in reverse.
- **DO NOT** turn sharply when travelling alongside a building or any object. Slow down before turning.
- **DO NOT** carry passengers on the rider.
- When blower assembly is removed from the mower deck, the deflector must be properly installed.
- Collector bags are subject to deterioration and wear during normal use. Inspect the bag periodically for tears, holes or weak spots and replace with a new bag that meets manufacturer's durability standards.
- If the mower stalls or the turbo blower chute plugs:
 1. Disengage the electric clutch (PTO);
 2. Stop the engine and remove the key;
 3. Set the parking brake, and wait for all moving parts to stop.
 4. Remove the foreign object or clear the chute with a piece of wood before restarting the engine.
NEVER place hands into blower housing to clear jammed object. Blower may rotate when object is removed.
- For added rider stability and to prevent tipping or loss of control:
 - a. Use reduced speed on uneven ground and when turning corners.
 - b. Reduce loads on hillsides. It is recommended that the collection system be kept no more than half full when negotiating any slopes. Start mowing on slopes when the collection system is empty.
 - c. Mow across the face of slopes; not up and down.
- **Never operate on slopes greater than 17.6% (10°).**

SAFETY DECALS

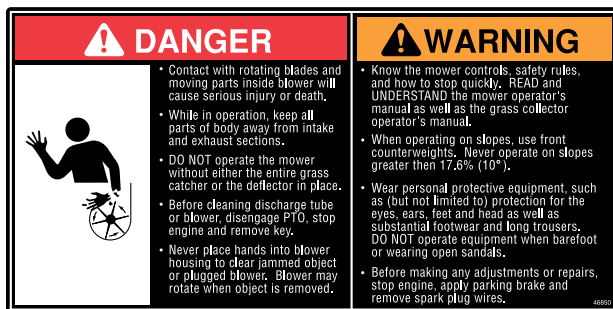
This unit has been designed and manufactured to provide you with the safety and reliability you would expect from an industry leader in outdoor power equipment manufacturing.

Although reading this manual and the safety instructions it contains will provide you with the necessary basic knowledge to operate this equipment safely and effectively, we have placed several safety labels on the unit to remind you of this important information while you are operating your unit.

All DANGER, WARNING, CAUTION and instructional messages on your rider and mower should be carefully read and obeyed. Personal bodily injury can result when these instructions are not followed. The information is for your safety and it is important! The safety decals below are on your rider and mower.

If any of these decals are lost or damaged, replace them at once. See your local dealer for replacements.

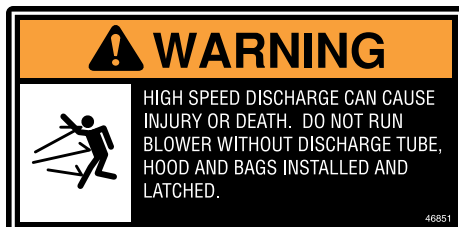
These labels are easily applied and will act as a constant visual reminder to you, and others who may use the equipment, to follow the safety instructions necessary for safe, effective operation.



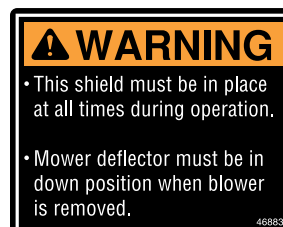
Decal - Danger / Warning
Part No. 46850



Decal - Danger, Rotating Blades
Part No. 1704277



Decal - Warning
Part No. 46851

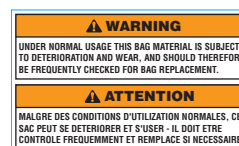


Decal - Warning
Part No. 46883



Decal - Warning

* Not a replacement part, permanently affixed to the cover.

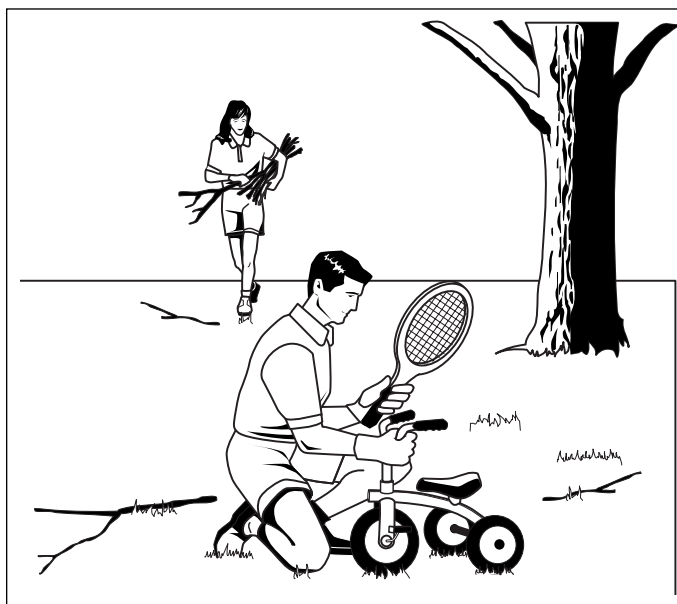


Decal - Warning

* Not a replacement part, permanently affixed to the bag.



General Operating Instructions



BEFORE OPERATION

Clear the lawn of all sticks, stones, wire and other debris which may be caught or thrown by the mower blades.

Check grass condition. If wet, wait until later in the day. If grass is wet, the grass catcher is likely to become plugged.

For efficient bagging, air circulation under the mower deck, through the chute and into the bag is very important.

For this reason, BEFORE YOU BEGIN MOWING you should make certain the underside of the mower and the underside of the catcher lid are free from grass and debris.

Make sure that there is a snug fit between mower deck, blower housing, tubes, and grass catcher cover.

MOWING WITH THE DOUBLE / TRIPLE CATCHER

Always operate with throttle at full speed when mowing.

Always wear hearing protection when operating grass catcher.

Grass should be cut often, and not too short. If grass is too long or lush it may be necessary to keep ground speed to a minimum or to cut only half the width of the mower to prevent clogging. If grass is long, operate with mower in high cutting position for first pass, cutting again in a lower position on a second pass.

Do not open the cover with mower engaged.

If a large amount of cut grass is spilling out from under deck, the tube may be plugged or the bags may be full—discontinue mowing, stop the rider, disengage the PTO and then empty the catcher or clear the tube.

⚠ WARNING

ALWAYS shut off the tractor. disengage the PTO, and allow all moving parts to stop **BEFORE** disconnecting or clearing tube, or emptying catcher.

Before leaving the operator's position for any reason, engage the parking brake, disengage the PTO, stop the engine and remove the key.

To reduce fire hazard, keep the engine, rider and mower free of grass, leaves and excess grease. Do not stop or park rider over dry leaves, grass or combustible materials.

⚠ CAUTION



This machine produces sound levels in excess of 85 dBA at the operator's ear and can cause hearing loss through extended periods of exposure.

Wear hearing protection when operating this machine.

AFTER OPERATION

Remove any debris from the the screen on the underside of the lid. *Note: The lid screen can be partially removed for easier cleaning and should be cleaned regularly.*

The blower housing and tube should be removed for cleaning.

Inspect the grass bags for wear or damage. Make sure that there is a snug fit between mower deck, blower housing, tubes, and grass catcher cover.

STORING THE GRASS CATCHER

Clean the grass catcher thoroughly using a mild detergent (other products may damage the tube). Remove any debris from the the screen on the underside of the lid. The screen can be partially removed for easier cleaning.

If paint has been scratched on metal parts, touch up with paint, or apply a thin film of oil to prevent corrosion.

Store in a dry area. Hang the catcher and catcher bags to dry thoroughly before storing for a long period of time.

Always store away from moisture.

MOWING WITHOUT THE BLOWER

For operation without the blower, the deflector must be properly installed in the down position and retained by the spring latch (Simplicity models only).

To remove the blower, reverse the installation steps.



48" & 52" Blower Mount & Drive Installation

Remove Discharge Chute

1. Park machine on a flat, level surface and apply the parking brake.
2. Remove the discharge chute and save.

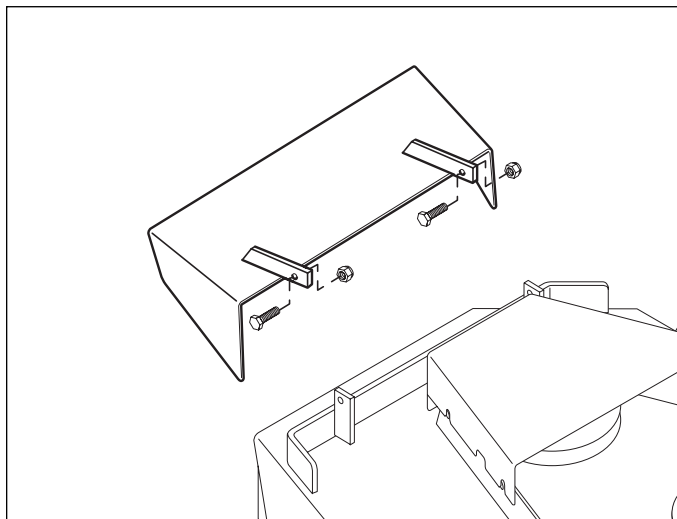


Figure 1. Chute Removal

Release Mower Drive Belt Tension

1. Raise the floor pan and loosen the spring compression nut (A, Figure 2) to release the belt tension.

NOTE: The floor pan on the Ferris IS1000Z Series is not hinged and must be removed completely to gain access to the belt tension spring.

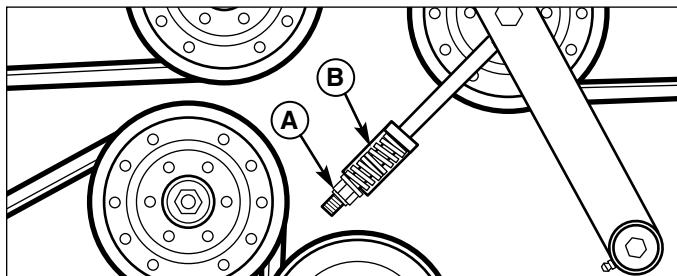


Figure 2. PTO Mower Drive Belt

- A. Spring Compression Nut
- B. Idler Spring

Remove Guard & Spindle Pulley

1. Remove the right-hand belt guard (A, Figure 3) and save.
2. Remove the mower deck drive belt from the right-hand spindle pulley.
3. Remove the right-hand spindle pulley (D), 5/8" nylon lock nut (B), 5/8" washer (C) and 1/4" key (E). Use a block of wood to keep the blade from spinning while removing the 5/8" nut.

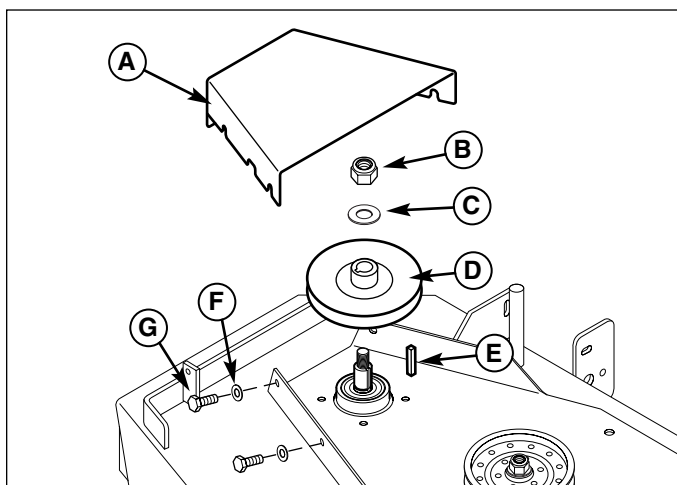


Figure 3. Belt Guard & Pulley Removal

- A. Guard
- B. 5/8" Nylon Lock Nut
- C. 5/8" Washer
- D. Spindle Pulley
- E. Key
- F. 5/16" Washer (3)
- G. 5/16" x 3/4" Bolt (3)

48" & 52" Blower Mount & Drive Installation

Select Proper Spindle Pulley

NOTE: There are two spindle pulleys supplied with the system.

To determine which pulley is required, compare the height of the old spindle pulley with the new spindle pulleys supplied. Use the pulley that matches the height of the old pulley (see Figure 4)

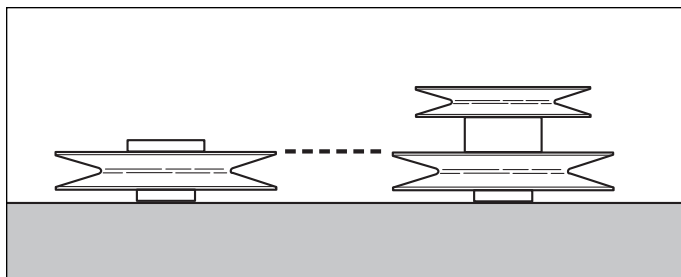


Figure 4. Select Proper Spindle Pulley

Install Spindle Pulley

1. Apply an anti-seize compound to the spindle shaft. Install the new, double spindle pulley (C, Figure 5) on the shaft with the smaller pulley facing up with the 5/8" nylon lock nut (A), 5/8" washer (B) and 1/4" key (D) and tighten to 85-95 ft./lbs (115-128 N.m.). Use a block of wood to keep the blade from spinning while installing and tightening the 5/8" nut.
2. Reinstall the mower deck drive belt on the new spindle pulley. Tighten the spring compression nut (A, Figure 2) until the idler spring (B, Figure 2) is compressed to 1-5/8" (4,12cm) long. Be sure the measure the spring only.

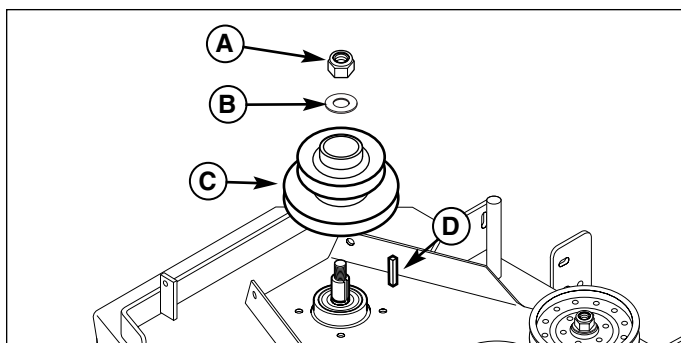


Figure 5. Install Spindle Pulley

- A. 5/8" Nylon Lock Nut
- B. 5/8" Washer
- C. Spindle Pulley
- D. Key

Install Guard

1. Install the new deck guard (B, Figure 6) and secure with the 5/16-18 x 3/4" bolts (C) and 5/16" washers (D) previously removed.
2. Install the 5/16" body clips (A) over the holes in the guard with the threaded side pointing down.

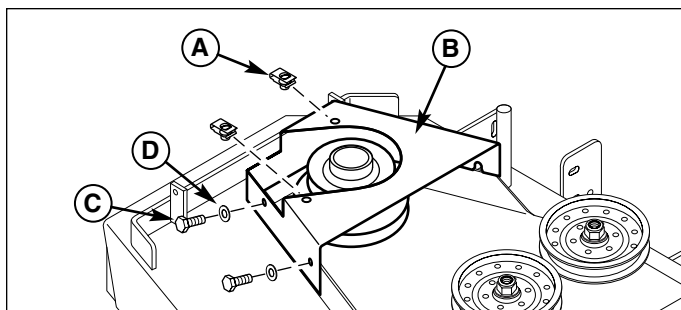


Figure 6. Install Guard

- A. 5/16" Body Clip (2)
- B. Guard
- C. 5/16" x 3/4" Bolt (3)
- D. 5/16" Washer (3)

48" & 52" Blower Mount & Drive Installation

Mower Deck Preparation

1. Install the blower onto the chute mount tabs, with the blower mount tabs towards the rear. Secure with the retaining pin.

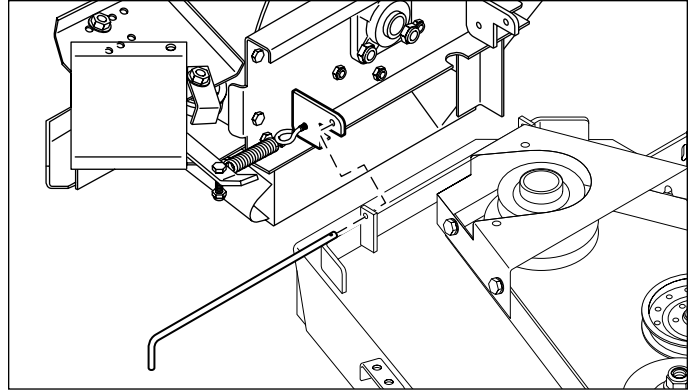


Figure 7. Install Blower Mount

2. While holding the blower against the deck and chute mount tabs, place the spacers on the mower deck in the recesses of the mount plate. Make sure they are at the bottom of the recess (see Figure 8). Mark their location with a paint pen or prick punch.
3. Remove the spacers and blower.
4. Drill 5/16" holes where the spacer location was marked.

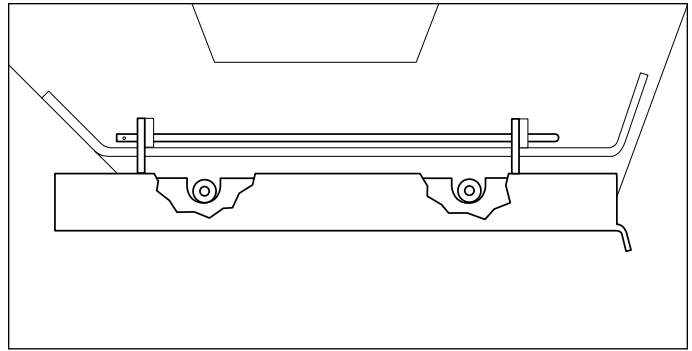


Figure 8. Spacer Location

5. Install the spacers (C, Figure 9) and mount bar (B) on the mower deck and secure with the 5/16-18 x 1-1/4" bolts (D) and 5/16-18 nylon lock nuts (A).

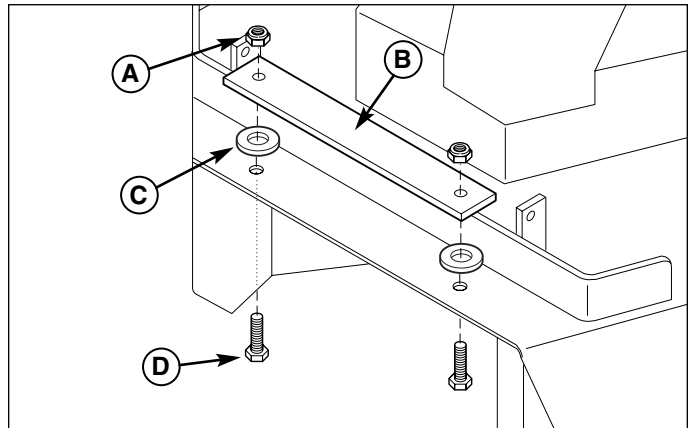


Figure 9. Install Quick Connect Bar

- A. 5/16" Nylon Lock Nut (2)
- B. Quick Connect Bar
- C. Spacer (2)
- D. 5/16" x 1-1/4" Bolt (2)

48" & 52" Blower Mount & Drive Installation

Install Blower & Belt Guard

1. Install the blower onto the chute mount tabs with the blower mount tabs towards the rear. Secure with the retainer pin and hair pin. Make sure the handle of the retaining pin is pointing down.
2. Pull the idler arm lever against the spring to install the drive belt on the spindle pulley (see Figure 11 for belt routing). The tension idler should be approximately 3/4" - 1" (1,90 - 2,54cm) away from the blower housing when belt is installed. If not, remove the belt shield and drive belt from the spindle and reposition the top idler pulley in the outside row of holes until the measurement is achieved.
3. Reinstall the blower belt shield and secure with the 5/16" x 1" bolts and 5/16" washers (if necessary).
4. Install the guard cover and secure with the plastic knobs.

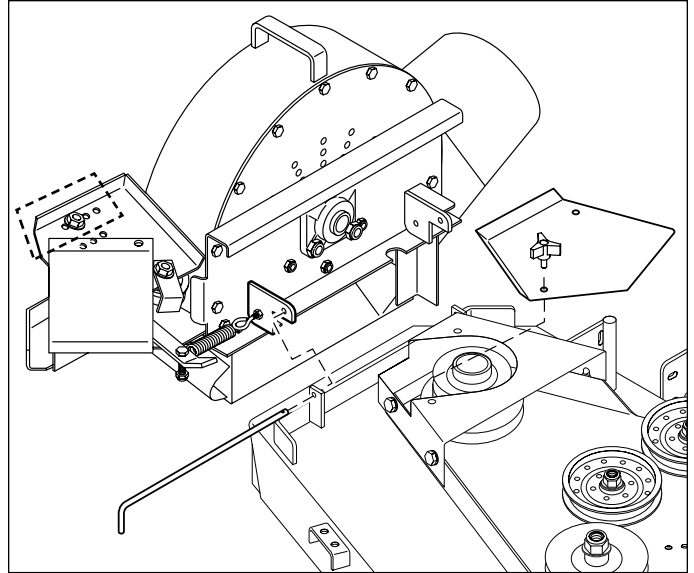


Figure 10. Install Blower & Belt Guard

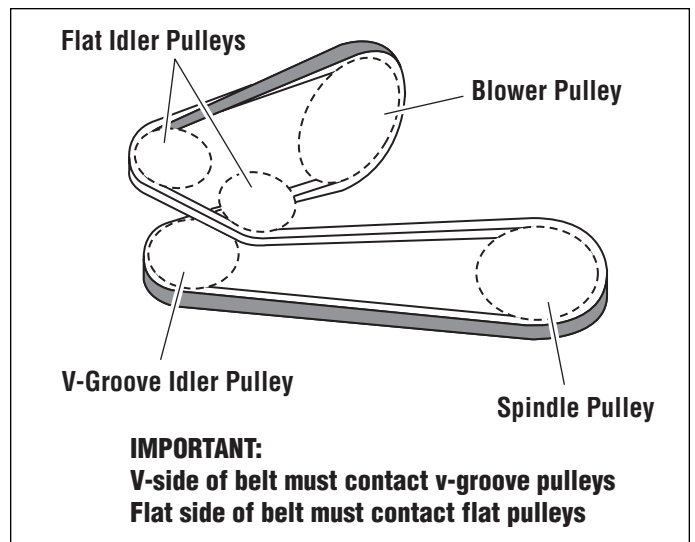


Figure 11. Belt Routing

NOTE: Gray areas indicate the flat side of the belt



Remove Discharge Chute

1. Park machine on a flat, level surface and apply the parking brake.
2. Remove the discharge chute and save.

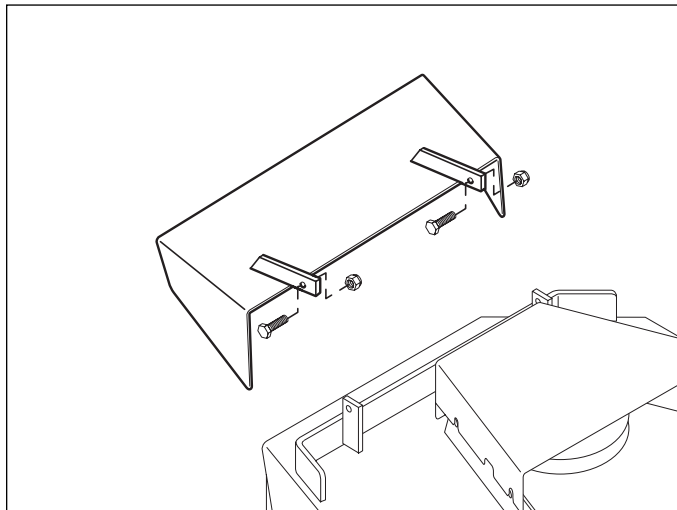


Figure 12. Chute Removal

Release Mower Drive Belt Tension

1. Raise the floor pan and loosen the spring compression nut (A, Figure 13) to release the belt tension.

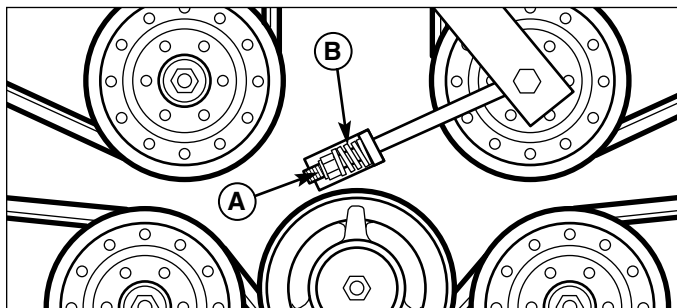


Figure 13. PTO Mower Drive Belt

- A. Spring Compression Nut
- B. Idler Spring

Remove Guard & Spindle Pulley

1. Remove the right-hand belt guard (A, Figure 14) and save. Remove and discard the two front 5/16-18 x 1" bolts (G), 5/16" washers (F) and 5/16" body clips.
2. Remove the mower deck drive belt from the right-hand spindle pulley.
3. Remove the right-hand spindle pulley (D), 5/8" nylon lock nut (B), 5/8" washer (C) and 1/4" key (E). Use a block of wood to keep the blade from spinning while removing the 5/8" nut.

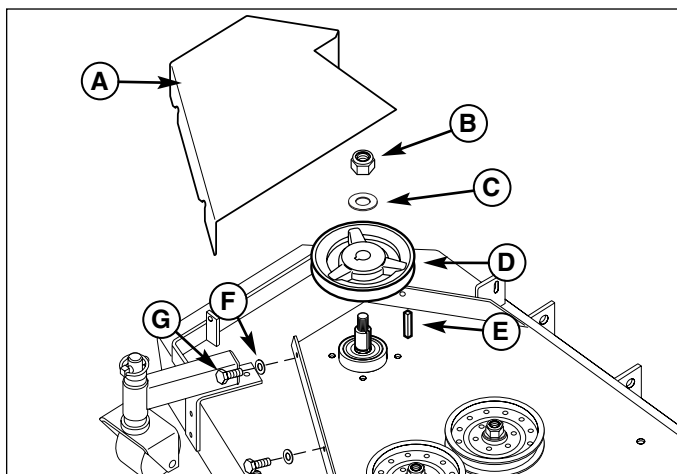


Figure 14. Belt Guard & Pulley Removal

- A. Guard
- B. 5/8" Nylon Lock Nut
- C. 5/8" Washer
- D. Spindle Pulley
- E. Key
- F. 5/16" Washer (3)
- G. 5/16-18 x 1" Bolt (3)

Install Spindle Pulley

1. Apply an anti-seize compound to the spindle shaft. Install the new, double spindle pulley (C, Figure 15) on the shaft with the smaller pulley facing up with the 5/8" nylon lock nut (A), 5/8" washer (B) and 1/4" key (D) and tighten to 85-95 ft./lbs. (115-128 N.m.). Use a block of wood to keep the blade from spinning while installing and tightening the 5/8" nut.
2. Reinstall the mower deck drive belt on the new spindle pulley. Tighten the spring compression nut (A, Figure 13) until the idler spring (B, Figure 13) is compressed to 1-5/8" (4,12 cm) long. Be sure the measure the spring only.

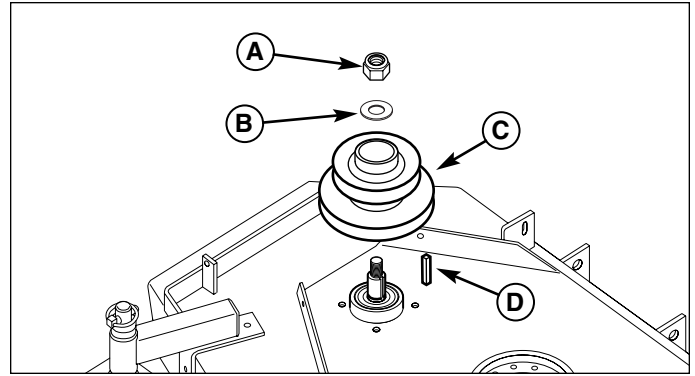


Figure 15. Install Spindle Pulley

- A. 5/8" Nylon Lock Nut
- B. 5/8" Washer
- C. Spindle Pulley
- D. Key

Install Guard & Blower Mount

1. Loosely install the 3/8-16 x 1-1/4" bolts (D, Figure 16), 3/8" washers (E), blower mount bar (C), belt guard (A) and nut bar (F) onto the mower deck. These fasteners will be tightened in a later step.
2. Install the 5/16" body clips (B) on the belt guard. The front body clip is installed from underneath the guard.

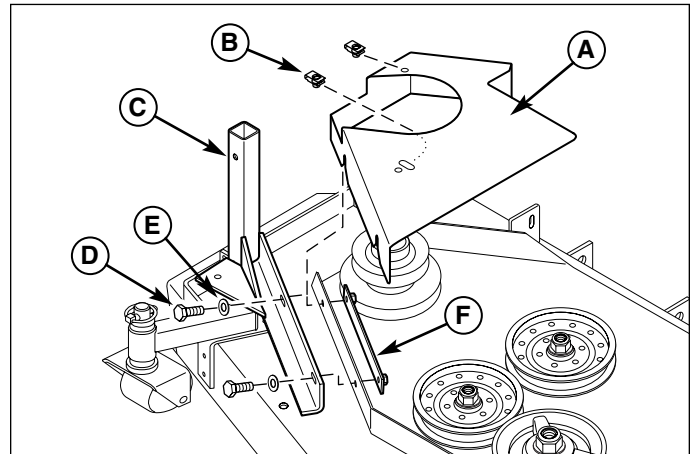


Figure 16. Install Blower Mount Bar & Belt Shield

- A. Belt Guard
- B. 5/16" Body Clip
- C. Blower Mount Bar
- D. 3/8-16 x 1-1/4" Bolts
- E. 3/8" Washer
- F. Nut Bar

61" Blower Mount & Drive Installation

Install Blower & Belt Guard

1. Loosen the 3/8-16 x 1" bolts (A, Figure 17) on the blower brace.
1. Install the blower assembly onto the mount bar (B). Push on the blower from the outside to obtain a tight fit between the blower housing and mower deck. Tighten the 3/8" x 1-1/4" bolts (C) that fasten the mount bar to the mower deck.
2. Drill a 3/8" hole through the mount flange of the blower mount bar and secure with a 3/8-16 x 1" bolt (E) and 3/8-16 flange nut (D).
3. Adjust the blower brace until approximately 1/8" (3,1mm) clearance is obtained between the brace and the chute mount bar. Tighten the 3/8-16 x 1" bolts (A).

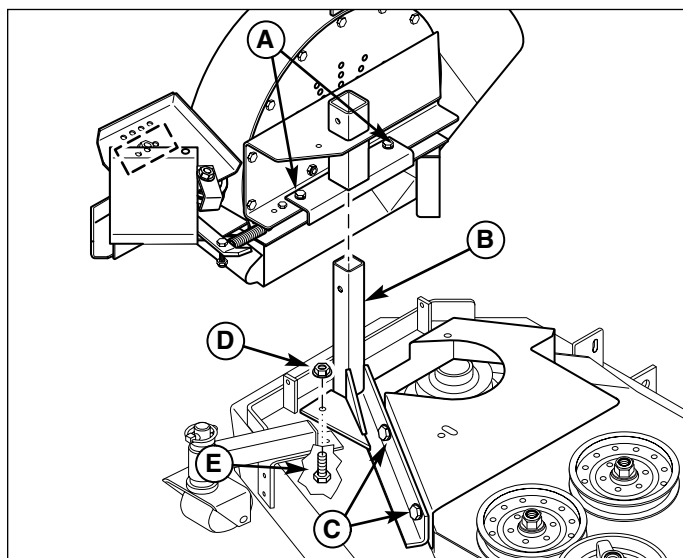


Figure 17. Install Blower

- A. 3/8-16 x 1" Bolt
- B. Mount Bar
- C. 3/8-16 X 1-1/4" Bolt
- D. 3/8-16 Flange Nut
- E. 3/8-16 x 1" Bolt

4. Install the 3/8" x 4" clevis pin (A, Figure 18) and hair pin clip (C) as shown.
5. Install the plastic cap (B) in the end of the blower mount bar.
6. Pull the idler arm lever against the spring to install the drive belt on the spindle pulley (see Figure 19 for belt routing). The tension idler should be approximately 3/4" - 1" (1,90 - 2,54cm) away from the blower housing when belt is installed. If not, remove the belt shield and drive belt from the spindle pulley and reposition the top idler pulley in the inside row of holes until the measurement is achieved.
7. Reinstall the blower belt shield and secure with the hardware previously removed (if necessary).
8. Install the deck belt shield (D) and secure with the plastic knobs (E).

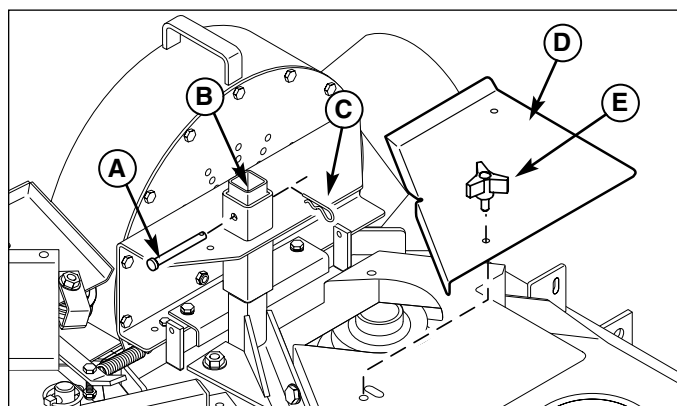


Figure 18. Install Belt Shield & Clevis Pin

- A. 3/8" x 4" Clevis Pin
- B. Plastic Cap
- C. Hair Pin Clip
- D. Belt Shield
- E. Plastic Knob

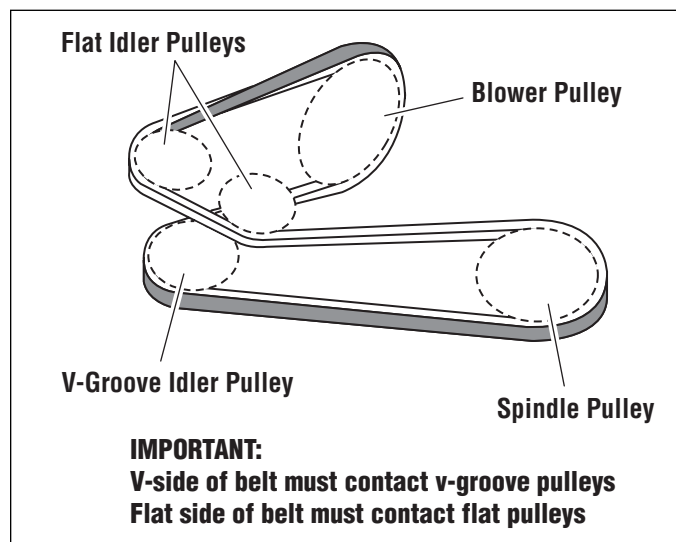


Figure 19. Belt Routing

NOTE: Gray areas indicate the flat side of the belt

Install Collector Mount Plate

(1000Z & IS1000Z Series)

1. Remove the hardware securing the rear bumper screen (A, Figure 20) to the top and bottom bumpers. Save the 3/8" bolts and washers from the lower bumper.

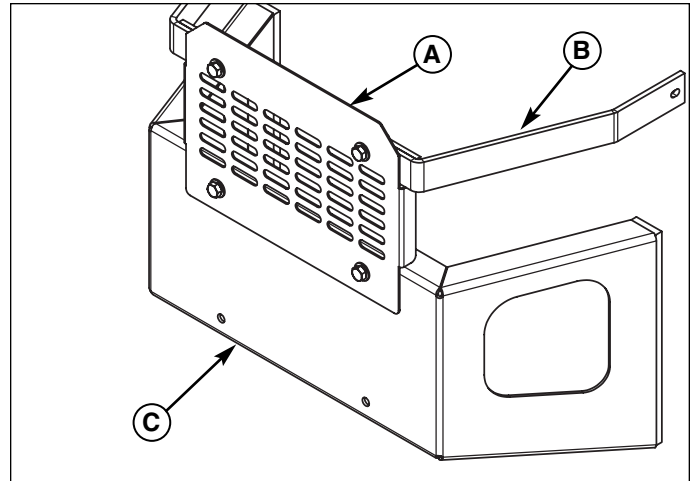


Figure 20. Remove Bumper Screen

- A. Screen
- B. Top Bumper
- C. Bumper Bar

2. Install the collector mount plate (A, Figure 21) on to the lower bumper and secure with the previously removed 3/8" bolts, 3/8" washers (B) and new 3/8-16 nylock flange nuts (E).
3. Install the 3/8-16 x 1-1/2" bolts and 3/8" washers (C) through the top mount holes as shown in Figure 18. Install the support bar (D) and secure with the 3/8-16 nylock flange nuts (E).

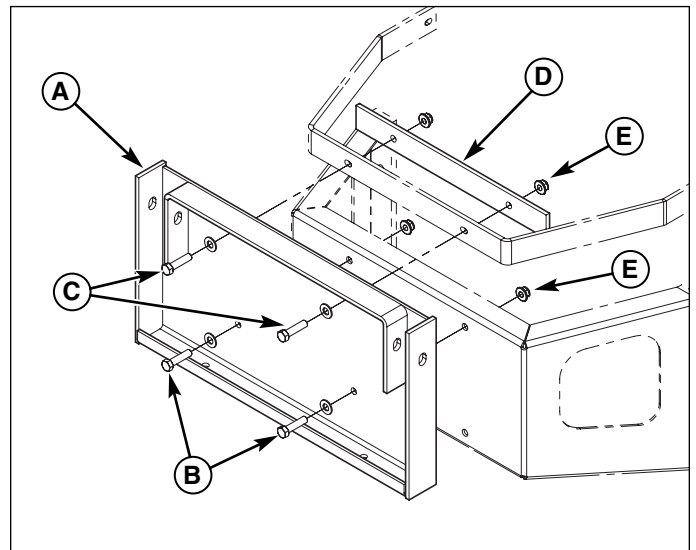


Figure 21. Install Collector Mount Plate

- A. Mount Plate
- B. 3/8" Bolts & Washers (previously removed)
- C. 3/8-16 x 1-1/2" Bolts & 3/8" Washers
- D. Support Bar
- E. 3/8-16 Nylock Flange Nuts

Collector Installation

Install Collector Mount Plate

(IS3000Z Series)

1. Install the collector mount plate (A, Figure 22) and mount tabs (B) on to the bumper. Install the 3/8-16 x 2-3/4" bolts (C) through the mount tabs and loosely secure with the clamp bars (D) and 3/8-16 nylock flange nuts (F).
2. Install the 3/8-16 x 2-1/2" bolts (E) through the bottom mounting holes and loosely secure with the clamp bars (D) and 3/8-16 nylock flange nuts (E).
3. Center mount plate on the bumper and tighten the bottom bolts (E) securely.

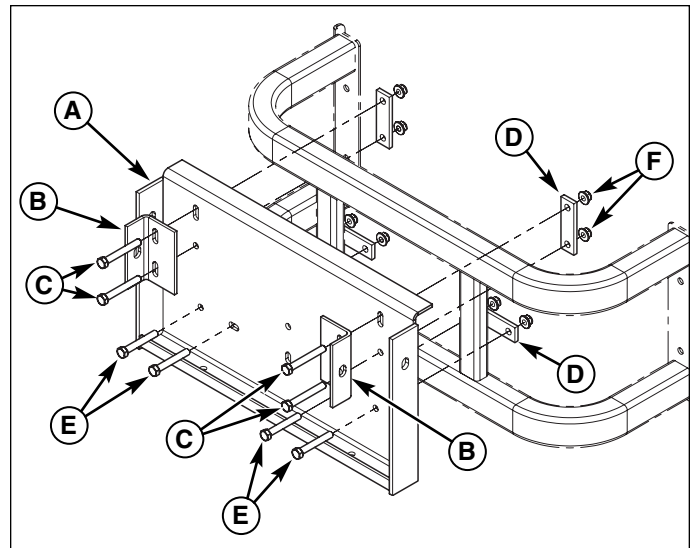


Figure 22. Install Collector Mount Plate

- A. Mount Plate
- B. Mount Tab
- C. 3/8-16 x 2-3/4" Bolt
- D. Clamp Bar
- E. 3/8-16 x 2-1/2" Bolt
- F. 3/8-16 Nylock Flange Nut

4. Temporarily install the collector mount posts (A, Figure 23) into the collector plate and install the hitch pins (B). This will insure that the holes are properly aligned for easy installation and removal.
5. Tighten the top mounting bolts (C, Figure 22) securely and remove the hitch pins and mount posts.

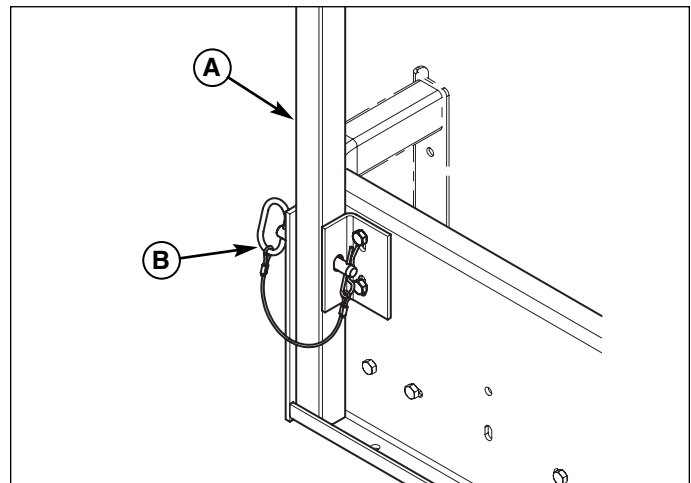


Figure 23. Install Mount Posts & Hitch Pins

- A. Mount Post
- B. Hitch Pin

Assemble Collector Hood

1. Install the inlet tube (B, Figure 24) to the collector back plate (A) and secure with the 5/16-18 x 3/4" bolts (C) and 5/16-18 nylock flange nuts (D).
2. Install the mount posts (E) on the back plate and loosely secure with the 3/8-16 x 1" bolts (F) and 3/8-16 nylock flange nuts (G).
3. Install the collector onto the mount plate and secure with the hitch pins as shown in Figure 23. Again, this will insure that the holes are properly aligned for easy installation and removal. Tighten the 3/8-16 x 1" bolts securing the posts to the back plate.

NOTE: On the 3-bag collector back plate, install the eight (8) supplied hole plugs in the remaining mounting holes not used.

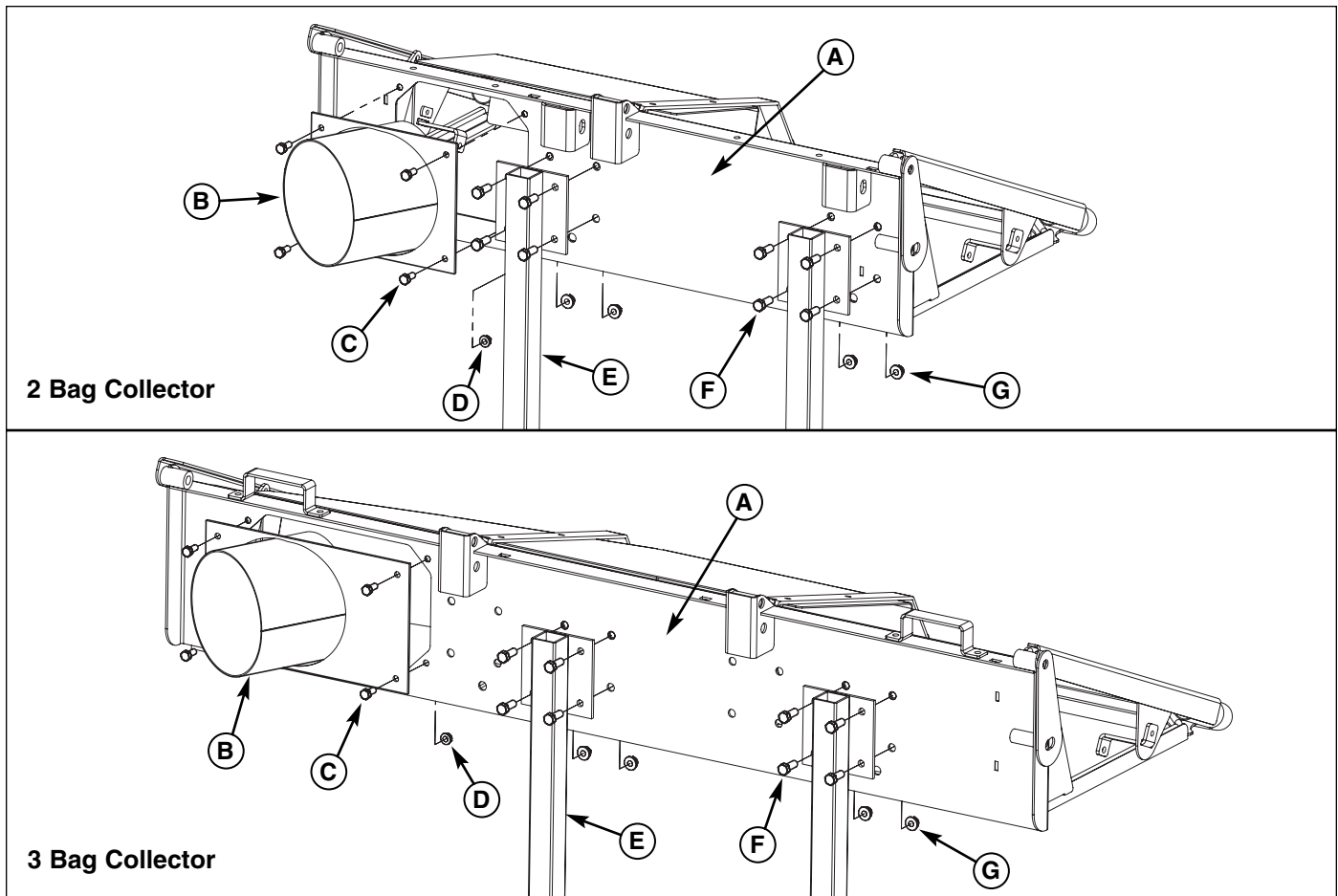


Figure 24. Assemble Collector Hood

- A. Collector Back Plate
- B. Inlet Tube
- C. 5/16-18 x 3/4" Bolt
- D. 5/16-18 Nylock Flange Nut
- E. Collector Mount Post
- F. 3/8-16 x 1" Bolt
- G. 3/8-16 Nylock Flange Nut

Collector Installation

Install Collector Bags

1. Raise the collector hood and slide the collector bags (A, Figure 25) onto the frame rails (B).

NOTE: The collector bags are constructed with three mesh panels and one solid panel. Install the bag with the solid panel towards the front of the machine.

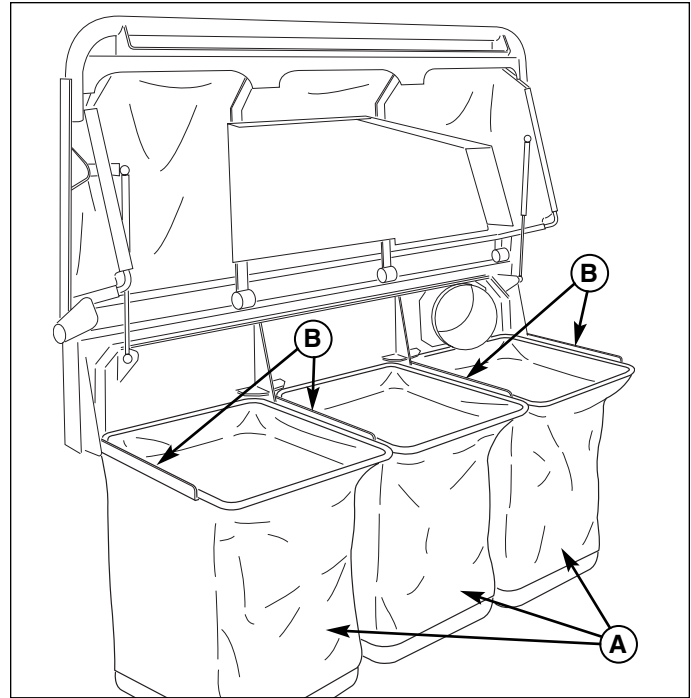


Figure 25. Install the Collector Bags

- A. Collector Bag
- B. Frame Rails

2. Lower the hood and push the lock pin (B, Figure 26) through the hood lock plate (A).

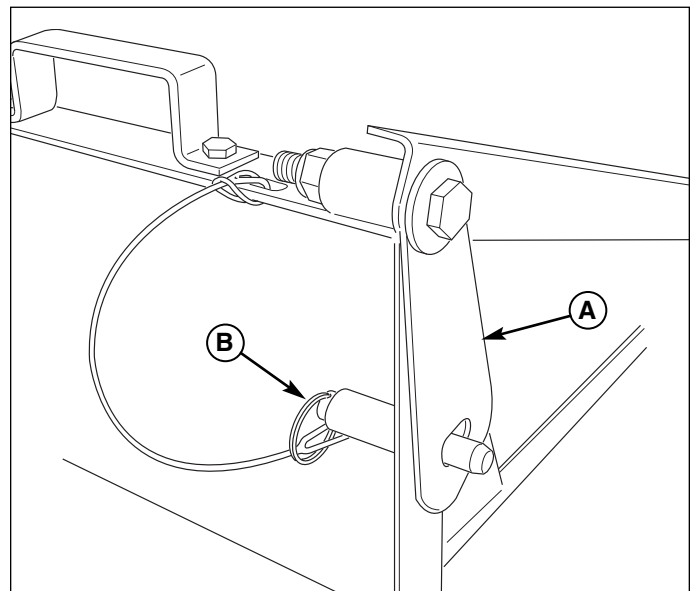


Figure 26. Lock Hood

- A. Hood Lock Plate
- B. Lock Pin

Install Hose

1. Lower the mower deck to the lowest cutting position.
2. See Figure 27. Install the hose (A) onto the blower and secure with the removable clamp (with knob) (B). At least two bands must cover the outlet of the blower (C).
3. Cut the hose to fit properly between the blower and collector as shown in Figure 27. At least two bands must cover the inlet of the collector (D). Secure with the stationary clamp (E).

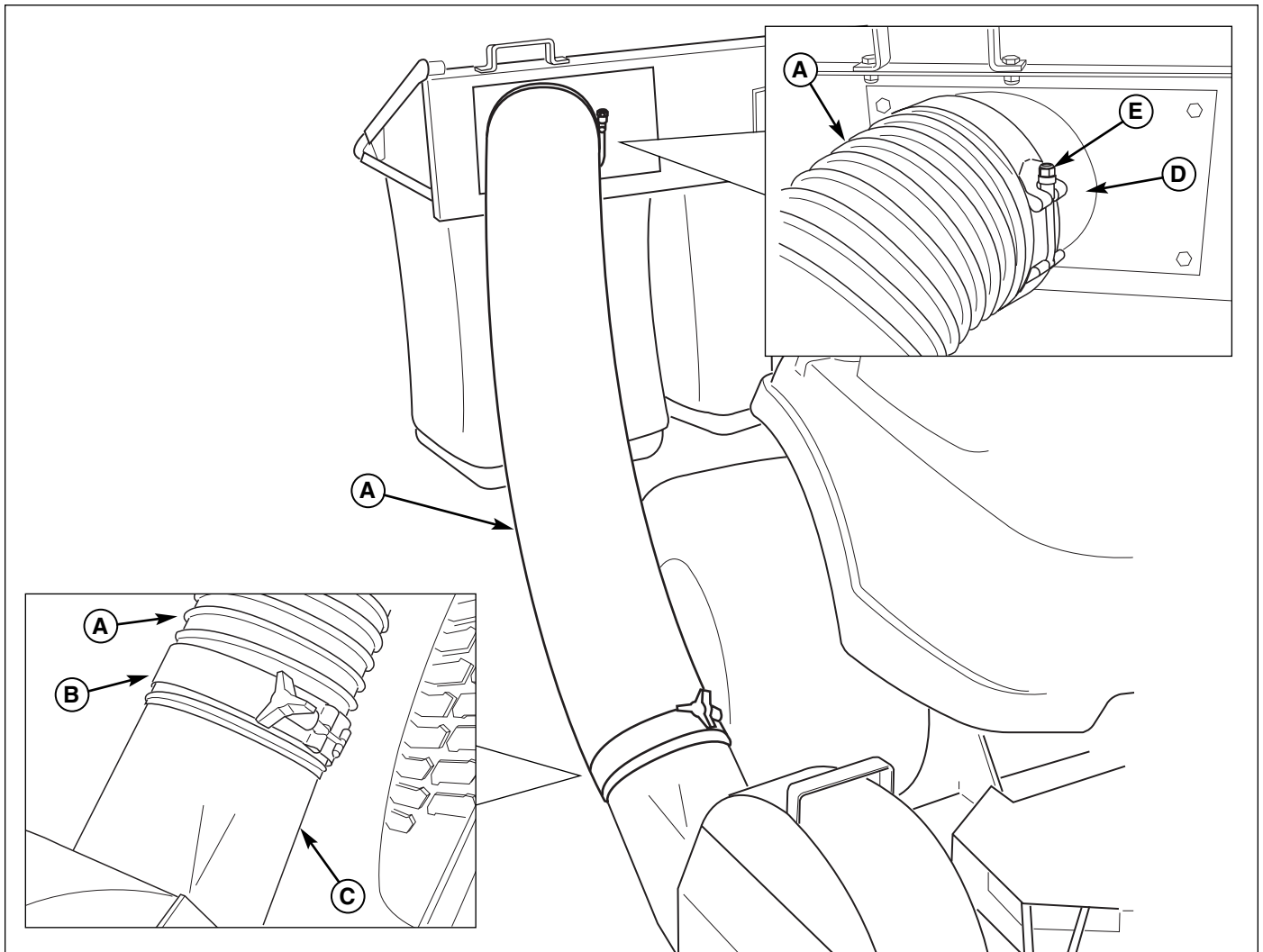


Figure 27. Install Hose

- A. Hose
- B. Removable Clamp (with knob)
- C. Blower Outlet
- D. Collector Inlet
- E. Stationary Clamp



Weight Mount Installation

(1000Z Series / 2-Bag Systems)

Install Weight Carrier

1. Remove the hairpin clip and clevis pin and remove the deck lift foot pedal. Lift the floor plate.
2. Install the weight carrier (B, Figure 28), mount plates (F & H) and fasten with the 3/8-16 x 3" bolts (A) and 3/8-16 nylon lock nuts (G). Tighten securely.
3. Install the counter weight (C) in the weight carrier and secure with the retaining pin (D) and hair pin clips (E).
4. Lower floor plate and reinstall deck lift foot pedal, clevis pin and hair pin clip.

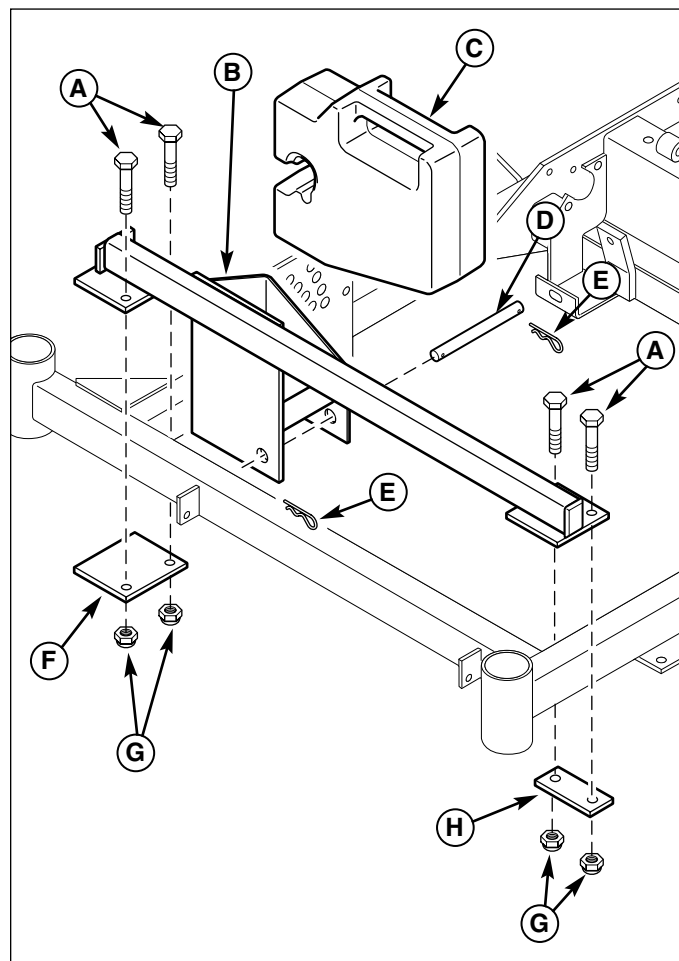


Figure 28. Install Weight Carrier

- A. 3/8-16 x 3" Bolts
- B. Weight Carrier
- C. Weight
- D. Retaining Pin
- E. Hairpin Clip
- F. Mount Plate
- G. 3/8-16 Nylon Lock Nuts
- H. Mount Plate



Install Weight Carrier

1. Remove the hairpin clip and clevis pin and remove the deck lift foot pedal. Lift the floor plate.
2. Install the weight carrier (E, Figure 29), mount plates (B & C) and fasten with the 3/8-16 x 3" bolts (A) and 3/8-16 nylon lock nuts (D). Tighten securely.
3. Install the counter weights (H) in the weight carrier and secure with the retaining pin (F) and hair pin clips (G).
4. Lower floor plate and reinstall deck lift foot pedal, clevis pin and hair pin clip.

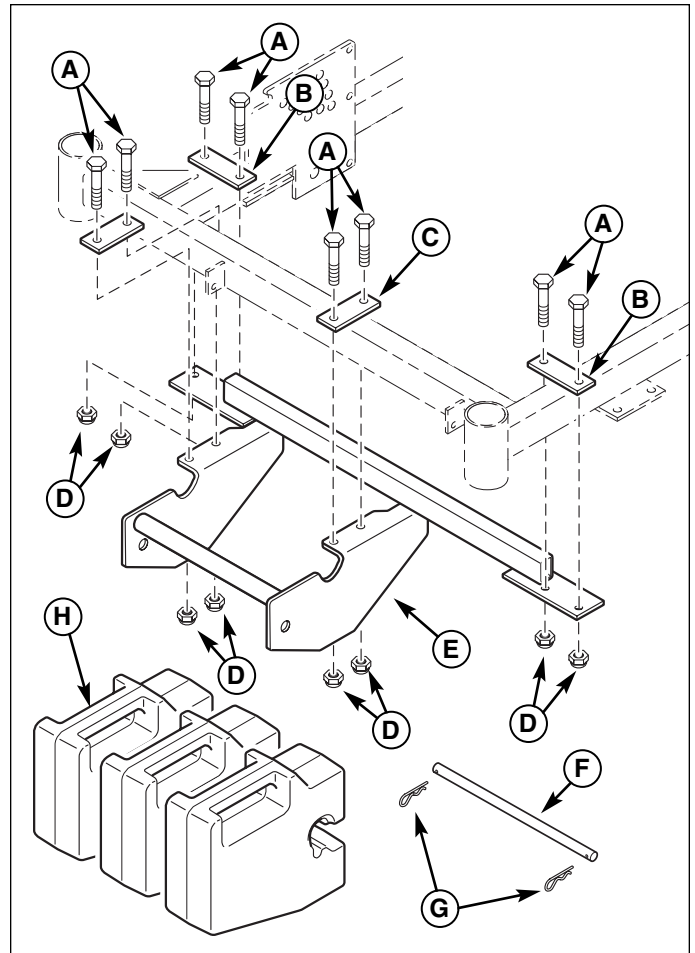


Figure 29. Install Weight Carrier

- A. 3/8-16 x 3" Bolts
- B. Mount Plate
- C. Mount Plate
- D. 3/8-16 Nylon Lock Nuts
- E. Weight Carrier
- F. Retaining Pin
- G. Hairpin Clip
- H. Weight



Weight Mount Installation

(IS1000Z Series / 2-Bag & 3-Bag Systems)

Install Weight Carriers

1. Install the left-hand and right-hand weight carriers (E & H, Figure 30), bar clamps (F) and fasten with the 5/16-18 x 2-1/2" bolts (B) and 5/16-18 nylon lock nuts (G). Make sure carriers are tight against the outside of the suspension arm and do not interfere with the shock/spring assembly. Tighten securely.
2. Install the counter weights (A) in the weight carrier and secure with the clevis pins (D) and hair pin clips (C).

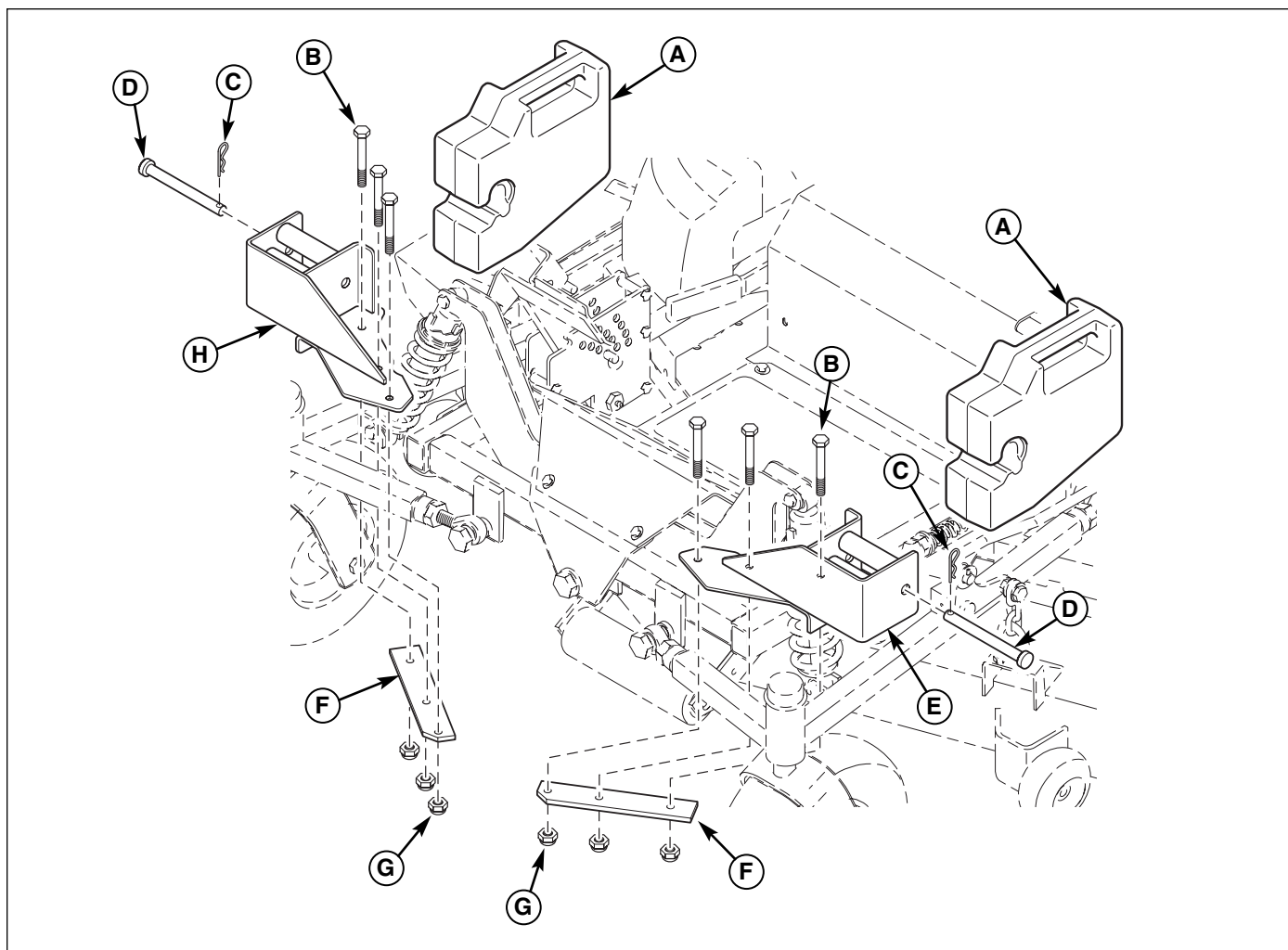


Figure 30. Install Weight Carriers

- A. Weight
- B. 5/16-18 x 2-1/2 Bolt
- C. Hairpin Clip
- D. Clevis Pin
- E. Weight Carrier-LH
- F. Bar Clamp
- G. 5/16-18 Nylon Lock Nuts
- H. Weight Carrier-RH



Install Weight Mount Rack

1. Measure and mark the front main frame tubes to the dimensions shown in Figure 31.
2. Using a 3/8" drill bit, drill one (1) hole in each of the main frame tubes from the outside surface of the tube.

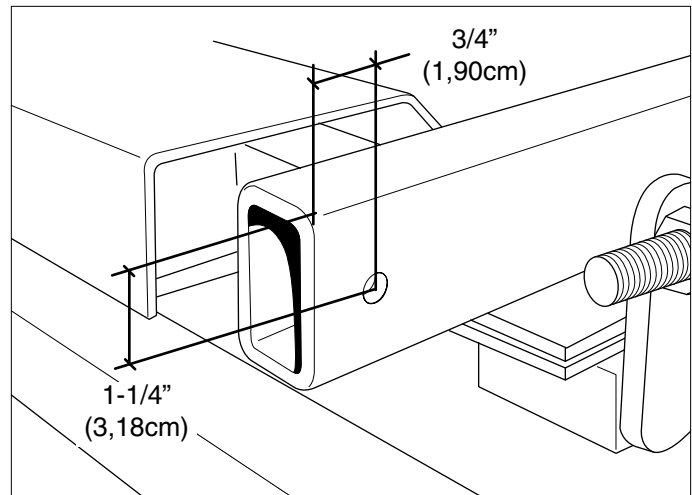


Figure 31. Hole Location

3. Slide the weight mount rack into the main frame tubes and align with the holes drilled through the frame (see Figure 32). It may require you drive the arms into the frame tubes using a wooden block and hammer.
4. Finish drilling through the opposite wall of the frame tubes using the weight rack as a guide.
5. Install the 3/8" bolts and nuts and fasten securely.

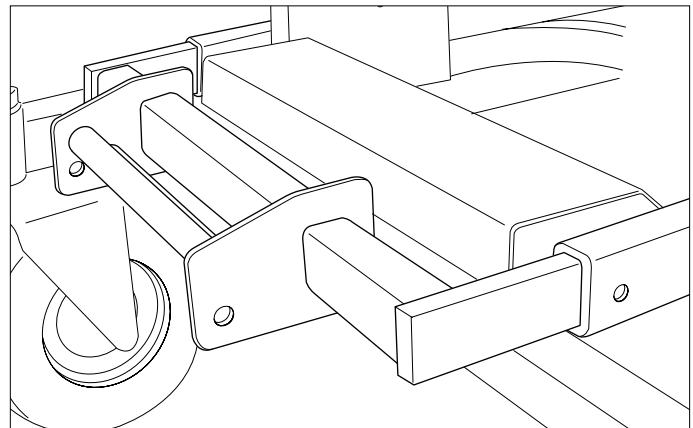


Figure 32. Weight Rack Installation

6. Install the counter weights supplied with the grass collector on the weight mount rack (see Figure 33).
7. Install the weight retainer rod through the weight mount rack and secure with the hairpin clips (see Figure 33).

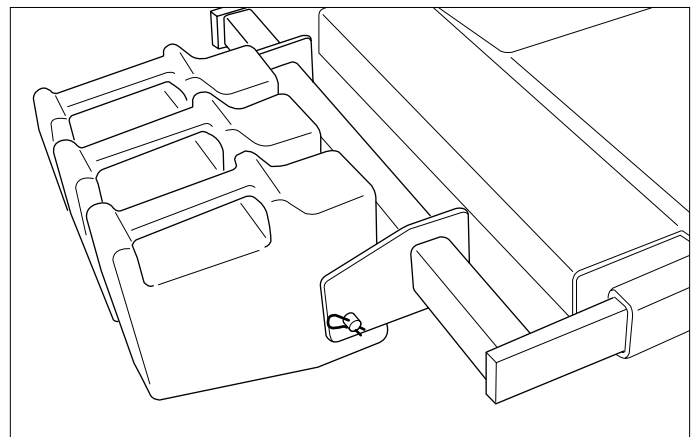


Figure 33. Weight & Retainer Rod Installation



Weight Mount Installation

(IS3000ZF & IS3000ZX Series / 3-Bag System)

Install Weight Mount Rack

1. Measure and mark the front main frame tubes to the dimensions shown in Figure 34.
2. Using a 3/8" drill bit, drill one (1) hole in each of the main frame tubes from the outside surface of the tube.

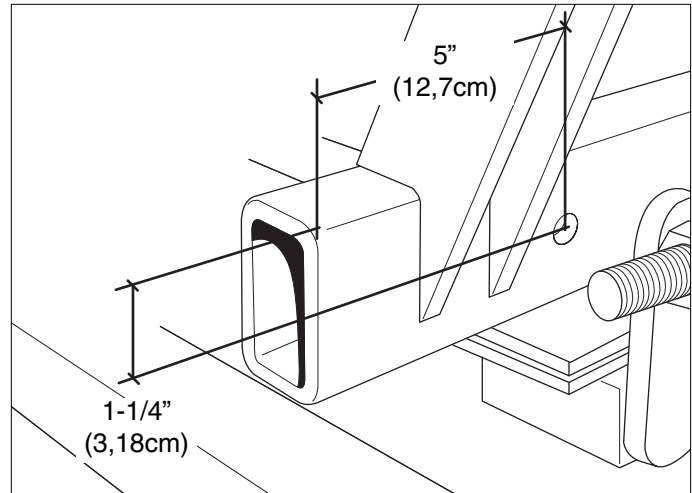


Figure 34. Hole Location

3. Slide the weight mount rack into the main frame tubes and align with the holes drilled through the frame (see Figure 35). It may require you drive the arms into the frame tubes using a wooden block and hammer.
4. Finish drilling through the opposite wall of the frame tubes using the weight rack as a guide.
5. Install the 3/8" bolts from the inside of the frame rail and fasten securely with the nylon lock nuts.

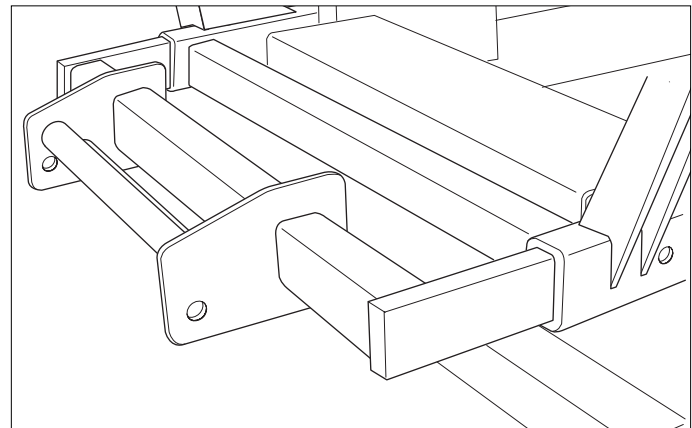


Figure 35. Weight Rack Installation

6. Install the counter weights supplied with the grass collector on the weight mount rack (see Figure 36).
7. Install the weight retainer rod through the weight mount rack and secure with the hairpin clips (see Figure 36).

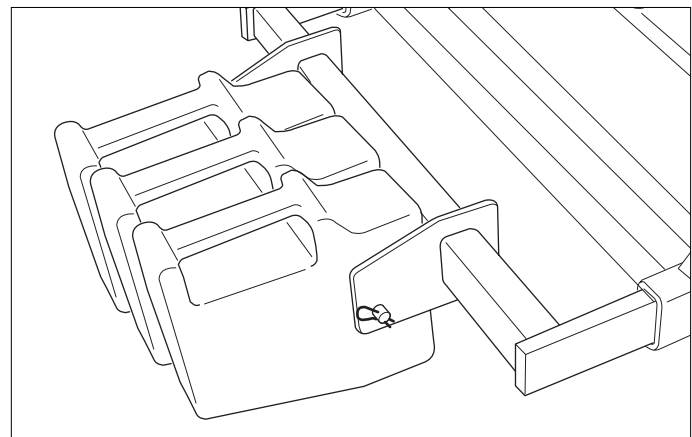


Figure 36. Weight & Retainer Rod Installation

MOWING WITHOUT THE BLOWER

For operation without the blower, the deflector must be properly installed in the down position.

To remove the blower, reverse the installation steps.

Reattaching the Discharge Chute

See Figure 37. Using the retainer pin and hair pin clip, secure the discharge chute to the mower deck. Make sure the chute mount tabs are in front of the tabs on the mower deck.

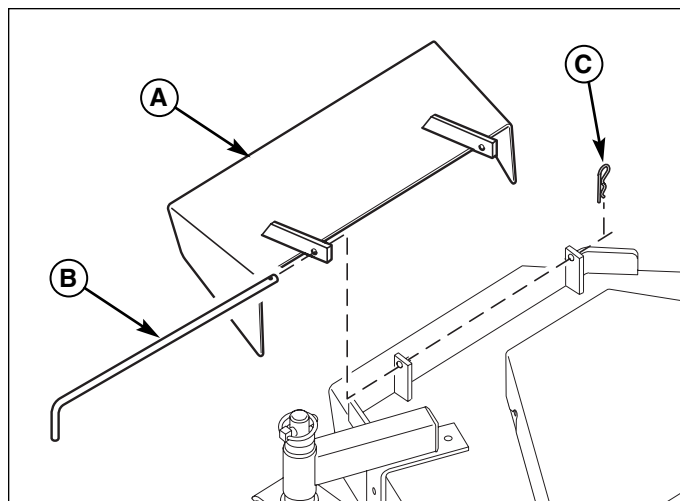


Figure 37. Discharge Chute Reattachment

- A. Discharge Chute
- B. Retainer Pin
- C. Hair Pin Clip

NOTES

[illegible]



Ferris Industries

5375 North Main Street
Munnsville, NY 13409
800-933-6175

www.ferrisindustries.com

© Copyright 2005 Ferris Industries
All Rights Reserved. Printed in USA.