

Installation Instructions

Skid Plate Kit

Part Nos. 5600332 & 5600336

For Ferris CCW36, HD1648 & Snapper Pro SW20 Walk-Behind Mowers

5600332 - Kit, Skid Guard, SW20 36-48 (Fits Snapper Pro SW20 Models)

Kit Contents:

Part No.	Qty.	Description
5405324D	1	Weld, Skid Plate, LH - Red
5405325D	1	Weld, Skid Plate, RH - Red
5101270	2	Pad, Rubber Mount, 1/4 Mat
5405361D	1	Plate, Rear Guard - Red
5025011X8	12	Bolt, 5/16-18 X 1 GD5, YZ
5025155	12	Washer, 5/16 SAE
5025392	8	Nut, 5/16-18 Hex Nylock Flange
5022308	4	Body Clip, 5/16-18, 7 Ga

5600336 - Kit, Skid Guard, CCW36 & HD1648 (Fits Ferris CCW36 & HD1648 Models)

Kit Contents:

Part No.	Qty.	Description
5405324B	1	Weld, Skid Plate, LH - Red
5405325B	1	Weld, Skid Plate, RH - Red
5101270	2	Pad, Rubber Mount, 1/4 Mat
5405361B	1	Plate, Rear Guard - Red
5025011X8	12	Bolt, 5/16-18 X 1 GD5, YZ
5025155	12	Washer, 5/16 SAE
5025392	8	Nut, 5/16-18 Hex Nylock Flange
5022308	4	Body Clip, 5/16-18, 7 Ga

⚠ WARNING

Before beginning any service work turn off the PTO, set the parking brake, turn off the ignition, and disconnect the spark plug wire(s).

1. Park the machine on a flat, level surface such as a concrete floor. Disengage the PTO, engage the parking brake, turn the ignition key, remove the ignition key, and disconnect the spark plug wire(s).
2. Remove the four (4) 5/16-18 X 1" bolts (A, Figure 1), 5/16 washers (B) and 5/16 nylock flange nuts (C) that secure the bumper (D) to the frame of the unit.

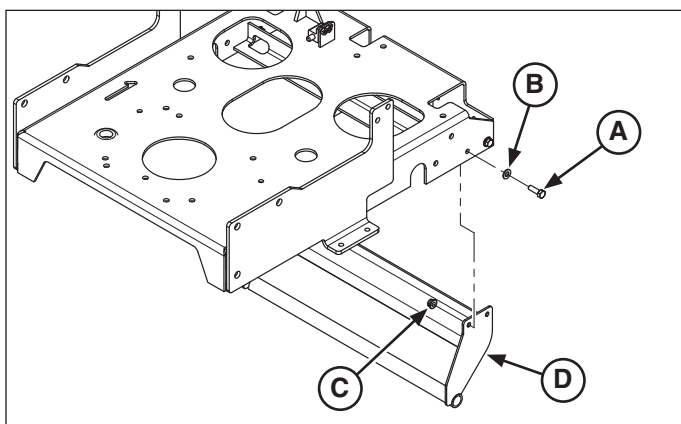


Figure 1. Removing the Bumper

- A. 5/16-18 X 1" Bolts
- B. 5/16 Washers
- C. 5/16 Nylock Flange Nuts
- D. Bumper

3. Install the four (4) 5/16-18 body clips (A, Figure 2) onto the rear guard plate (B) as shown in Figure 2.
4. Install the rubber mount pads (C) onto the RH skid plate (D) and LH skid plate (E) in the same orientation and position as shown in Figure 2. The rubber pads should be positioned 1/4" (0,635 cm) from the inside edge of the skid plate and 1/4" (0,635 cm) from the top edge of the skid plate. See insert below.

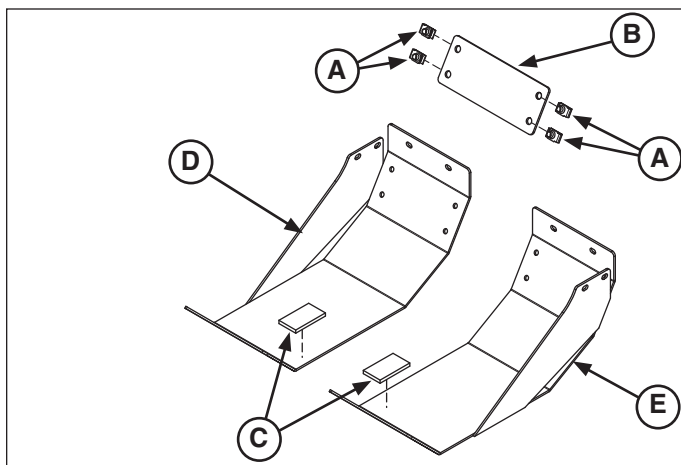
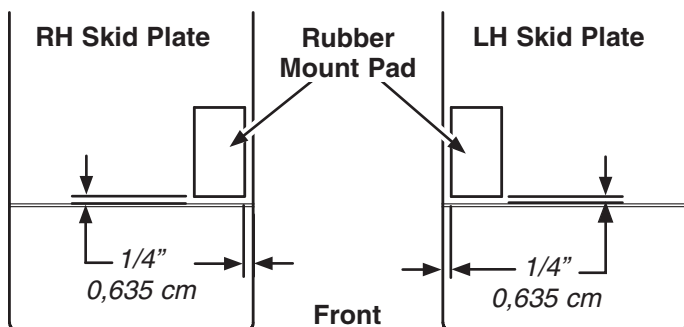


Figure 2. Assembly Preparation

- A. 5/16-18 Body Clips
- B. Rear Guard Plate
- C. Rubber Mount Pad
- D. RH Skid Plate
- E. LH Skid Plate



5. Install the LH skid plate (A, Figure 3) to the frame as shown in Figure 3. Secure in place using four (4) 5/16-18 X 1" bolts (B) 5/16 washers (C) 5/16 nylock flange nuts (D). Repeat this process to install the RH skid plate to the machine.

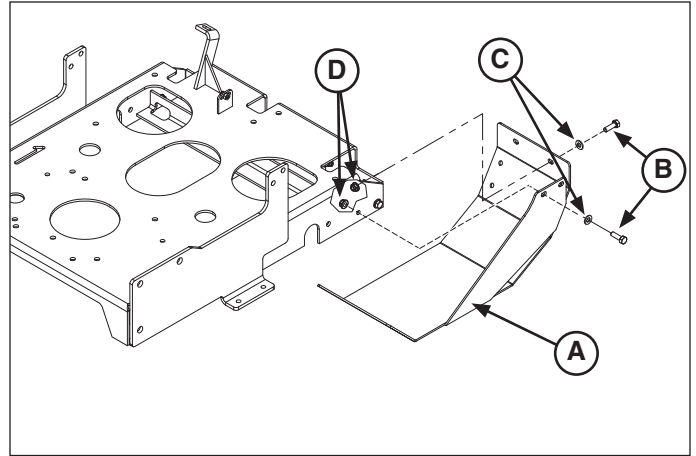


Figure 3. Installing the Skid Plates

- A. LH Skid Plate
- B. 5/16-18 X 1" Bolt
- C. 5/16 Washer
- D. 5/16 Nylock Flange Nut

6. Install the rear guard plate (A, Figure 4) to the LH skid plate (B) and RH skid plates (C) to the frame (D) as shown in Figure 4. Secure in place using four (4) 5/16-18 X 1" bolts (E) and 5/16 washers (F).

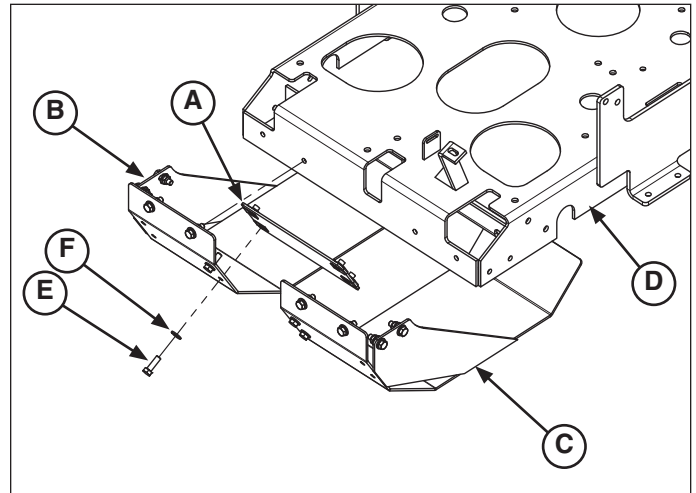


Figure 4. Installing the Rear Guard Plate (Skid plates shown exploded from frame for detail)

- A. Rear Guard Plate
- B. LH Skid Plate
- C. RH Skid Plate
- D. Frame
- E. 5/16-18 X 1" Bolt
- F. 5/16 Washer