



Parts Manual Fast-Vac

Grass Collection Systems

Fits 2005 & Above Models with Rubber Discharge Chute



Models:	Description:
5100857	3-Bag Dump From Seat
5600001	44" 2-Bag System (IS500Z & IS1500Z Series)
5600002	48" 2-Bag System (IS1500Z Series)
5600003	48" 3-Bag System (IS1500Z Series)
5600004	52" 3-Bag System (IS1500Z Series for S/N: 2012628762 & Below)
5600005	61" 3-Bag System (IS3000ZL Series)
5600006	61" 3-Bag System (IS3000ZF & IS3000ZX Series)
5600007	52" 3-Bag System (IS1000Z Series)
5600008	61" 3-Bag System (1000Z Series)
5600009	61" 3-Bag System (IS4500Z Series)
5600057	61" 3-Bag System (IS2000Z Series)
5600060	61" 3-Bag System (IS3100Z Series)
5600061	52" 3-Bag System (IS2000Z Series for S/N: 2012628762 & Below)
5600083	61" 3-Bag System (IS3100ZBS Series)

Briggs and Stratton Yard Power Products Group

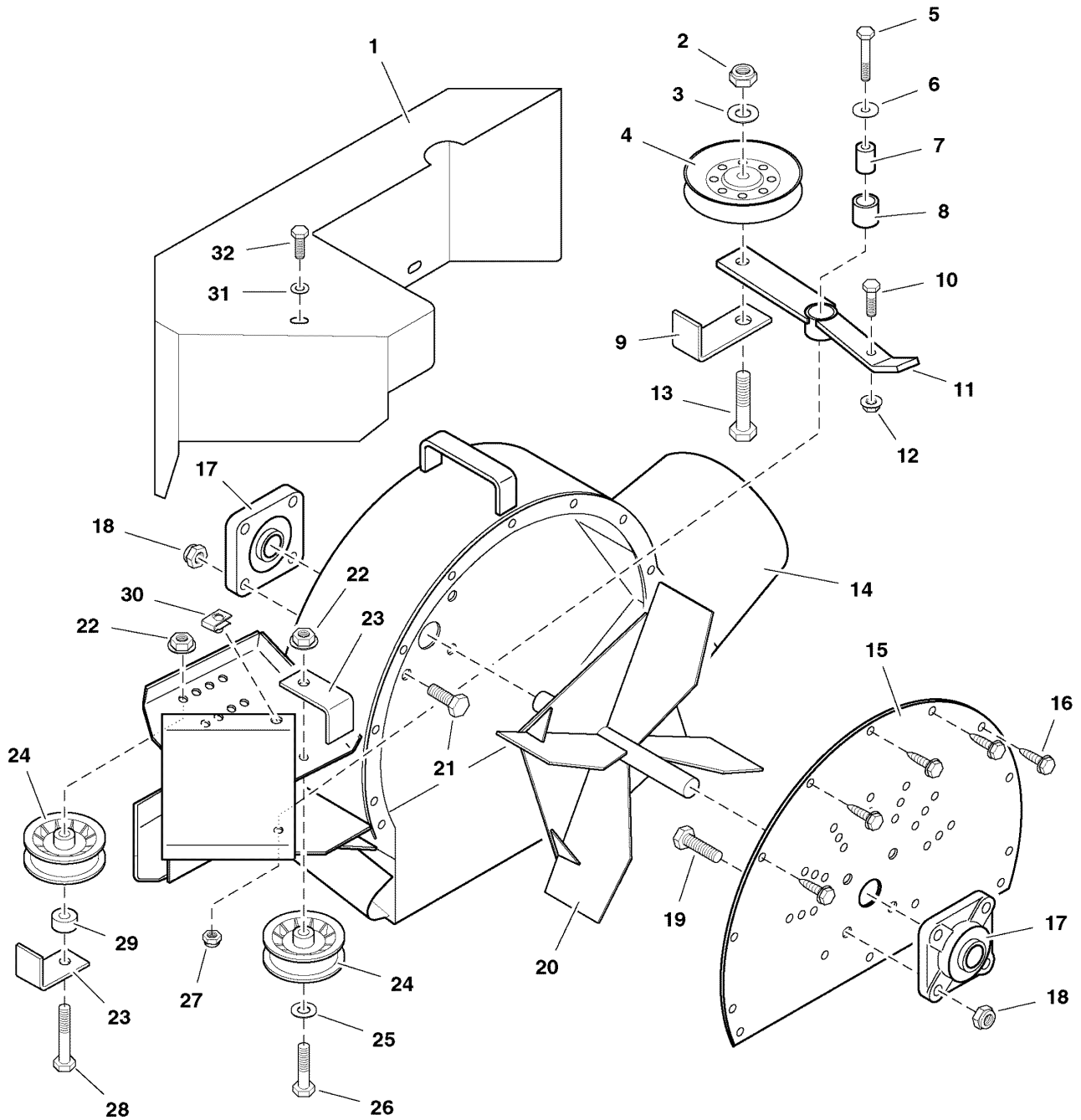
5375 North Main Street
Munnsville, NY 13409 USA
800-933-6175

5100064
Revision K
Rev. Date: 10/2007
TP 400-7220-K-AT-F

MODEL COMPONENTS	PAGE
Blower Group (IS3100BS Only)	4
Blower Group	6
Blower Group (IS4500Z Series Only)	8
Blower Mount & Drive Group	10
Blower Mount & Drive Group - IS3000ZL, IS3100Z & IS4500Z Series	12
2-Bag Catcher & Cover Group	14
2-Bag & 3-Bag Mount - IS500Z, 1500Z & IS2000Z	16
3-Bag Catcher & Cover Group	18
3-Bag Mount - 1000Z, IS1000Z, 52" & 61" Deck	20
3-Bag Mount - IS3000Z, 61" Deck	22
3-Bag Mount - IS4500Z, 61" Deck	24
3-Bag Mount - IS3100Z Series	26
3-Bag Dump From Seat	28
Weight Mount Group - 1000Z	30
Weight Mount Group - IS3000Z & IS3100Z Series	32
Weight Mount Group - IS1000Z	34
Weight Mount Group - IS500Z, IS1500Z & IS4500Z	36
Weight Mount Group - IS2000Z	38
Decals - Brand, Safety & Instruction	40
Ball Joint, IS2000Z, 52" Deck	42
Model Reference Sheet 1 - Models w/Rubber Discharge Chutes	44
Model Reference Sheet 2 - Models w/Rubber Discharge Chutes	45
Torque Specification Chart	Inside Back Cover

Blower Group (IS3100BS Only)

NOTE: Unless noted otherwise,
use the standard hardware torque
specification chart.



The above parts group applies to the following Mfg. Nos.:
5600083 (IS3100ZBS Series)

Blower Group (IS3100BS Only)

REF NO	PART NO.	QTY.	DESCRIPTION
1	5046782A	1	BELT GUARD
2	5025056	1	NUT, 1/2-13 Hex Nylon Lock
3	5025158	1	WASHER, 1/2" SAE
4	5021097	1	PULLEY, V-Idler
5	5025011X14	1	BOLT, 5/16-18 x 1-3/4
6	5025164	1	WASHER, 5/16" Fender
7	5042134	1	SPACER, .32 x .75 x 1.06
8	5020876B	1	BUSHING, Brass
9	5046824A	1	BELT KEEP
10	5025011X10	1	BOLT, 5/16-18 x 1-1/4
11	5047253A	1	IDLER ARM
12	5025127	1	NUT, 5/16-18 Hex Small Serrated Flange
13	5025017X18	1	BOLT, 1/2-13 x 2-1/4
14	5046781A	1	BLOWER HOUSING
15	5046853A	1	BACK PLATE
16	5025059X6	5	BOLT, Self-Tapping, 5/16-18 x 3/4
17	5022832	2	BEARING
18	5025125	8	NUT, 7/16-14 Hex Nylon Lock
19	5025015X12	4	BOLT, 7/16-14 x 1-1/2
20	5046854A	1	IMPELLER
21	5025015X10	4	BOLT, 7/16-14 x 1-1/4
22	5025128	2	NUT, 3/8-16 Hex Serrated Flange
23	5046813A	2	BELT KEEP
24	5043613	2	IDLER PULLEY ASSEMBLY
25	5025156	1	WASHER, 3/8" SAE
26	5025013X14	1	BOLT, 3/8-16 x 1-3/4
27	5025057	1	NUT, 5/16-18 Hex Nylon Lock
28	5025013X18	1	BOLT, 3/8-16 x 2-1/4
29	5046860	1	SPACER, .39 x 1.00 x .50
30	5022308	3	BODY CLIP, 5/16-18
31	5025155	3	WASHER, 5/16" SAE
32	5025011X8	3	BOLT, 5/16-18 x 1

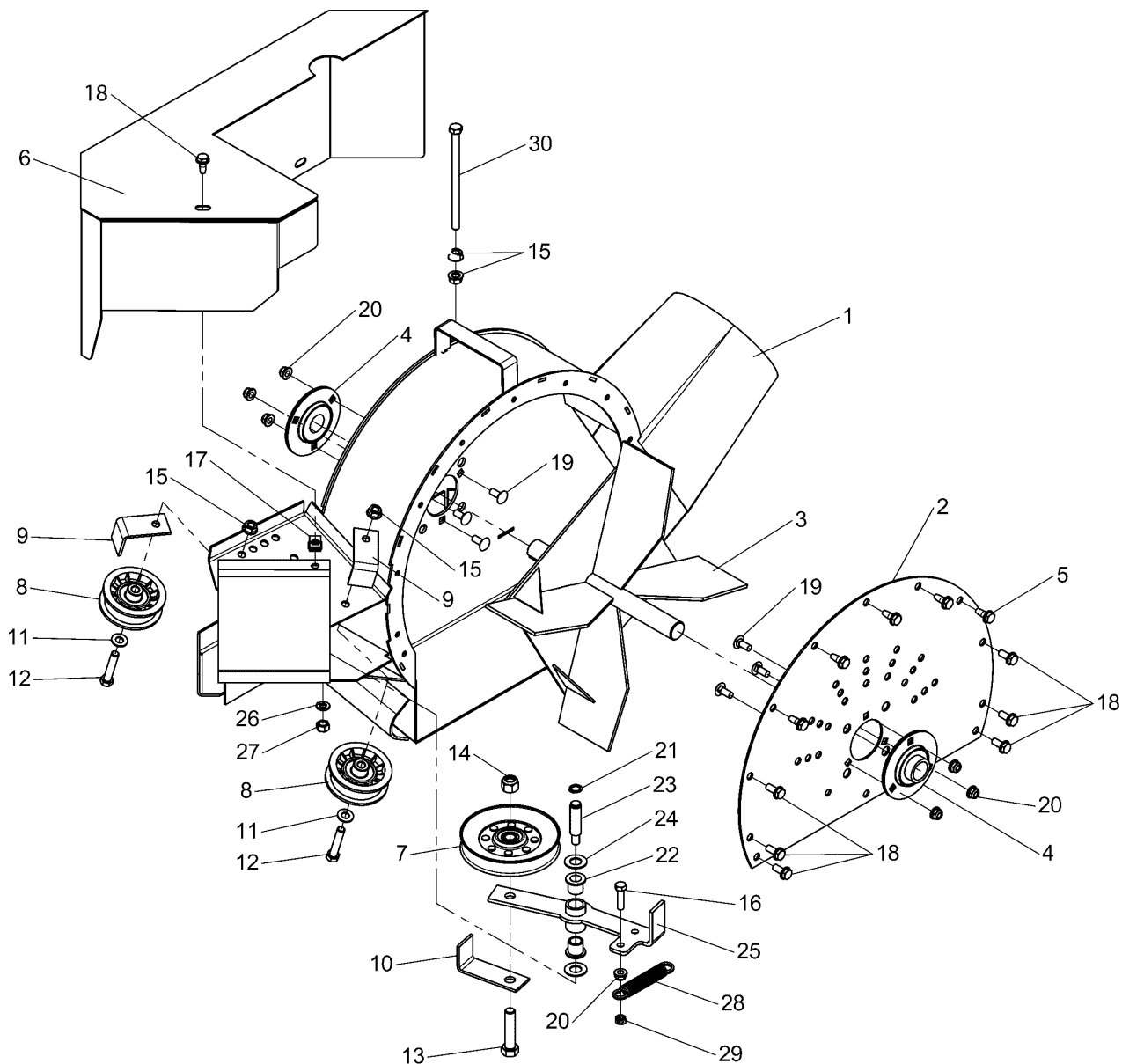
Footnotes

The above parts group applies to the following Mfg. Nos.:

5600083 (IS3100ZBS Series)

Blower Group

NOTE: Unless noted otherwise, use the standard hardware torque specification chart.



The above parts group applies to the following Mfg. Nos.:

- | | |
|--|--|
| 5600060 (IS3100Z Series) | 5600004 (IS1500Z Series for S/N: 201262) |
| 5600061 (IS2000Z Series for S/N: 201262) | 5600007 (IS1000Z Series) |
| 5600001 (IS500Z & IS1500Z Series) | 5600008 (1000Z Series) |
| 5600002 (IS1500Z Series) | 5600006 (IS3000ZF & IS3000ZX Series) |
| 5600003 (IS1500Z Series) | 5600005 (IS3000ZL Series) |
| 5600057 (IS2000Z Series) | |

Blower Group

REF NO	PART NO.	QTY.	DESCRIPTION
1	5403723A	1	BLOWER HOUSING
2	5403750A	1	BACK PLATE
3	5403754A	1	BLOWER IMPELLER
4	7100021	2	BEARING, FLANGE, 1" Bore
5	7091541	5	BOLT, 5/16-18 X 3/4" Self Tap
6	5403736A	1	BELT GUARD
7	5021097	1	PULLEY, IDLER V-NOTCH, 5"
8	3043613	2	IDLER PULLEY ASSEMBLY
9	5403749A	2	BELT KEEPER
10	5403740A	1	KEEPER, BELT TENSIONER
11	5025156	2	WASHER 3/8" SAE
12	5025013X16	2	BOLT, 3/8-16 X 2
13	5025017X18	1	BOLT, 1/2-13 X 2-1/4
14	5025056	1	NUT, 1/2-13 Hex Nylon Lock
15	5025394	4	NUT, 3/8-16 Hex Large Serrated Flange
16	5025011X10	1	BOLT, 5/16-18 X 1-1/4
17	5022308	3	U-CLIP, 5/16-18
18	7091811	6	BOLT, 5/16-18 X 5/8" Self Lock
19	5025145X6	6	CARRIAGE BOLT, 5/16-18 X 3/4
20	5025392	6	NUT, 5/16-18 Hex Nylock Flange
21	7010776	1	RETAINING RING, 1/2"
22	7014409	2	FLANGE BEARING, 9/16"
23	7044995	1	IDLER STUD
24	7091804	2	FLAT WASHER, 9/16" Narrow
25	5403746	1	IDLER ARM
26	5025171	1	WASHER, 3/8 Lock
27	5025035	1	NUT, 3/8-24 Hex
28	5020807	1	SPRING, Extension
29	7091575	1	NUT, 5/16-18 Hex Center Lock
30	5025013X48	1	BOLT, 3/8-16 X 6" GD5

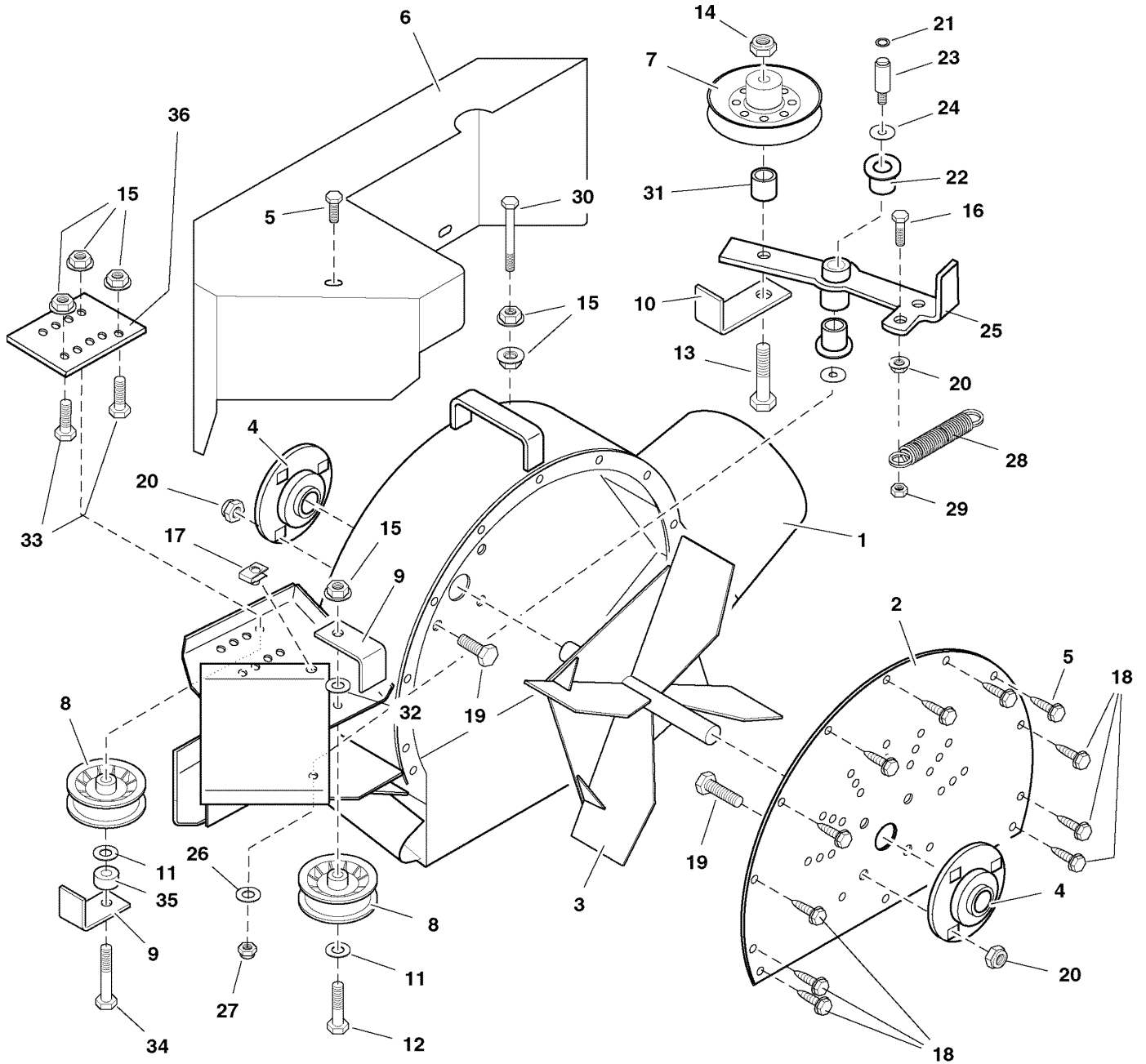
Footnotes

The above parts group applies to the following Mfg. Nos.:

5600060 (IS3100Z Series)	5600004 (IS1500Z Series for S/N: 201262)
5600061 (IS2000Z Series for S/N: 201262)	5600007 (IS1000Z Series)
5600001 (IS500Z & IS1500Z Series)	5600008 (1000Z Series)
5600002 (IS1500Z Series)	5600006 (IS3000ZF & IS3000ZX Series)
5600003 (IS1500Z Series)	5600005 (IS3000ZL Series)
5600057 (IS2000Z Series)	

Blower Group (IS4500Z Series Only)

NOTE: Unless noted otherwise,
use the standard hardware torque
specification chart.



The above parts group applies to the following Mfg. Nos.:
5600009 (IS4500Z Series)

Blower Group (IS4500Z Series Only)

REF NO	PART NO.	QTY.	DESCRIPTION
1	3046781	1	BLOWER HOUSING
2	3046853	1	BACK PLATE
3	3046854	1	BLOWER IMPELLER
4	7100021	2	BEARING, FLANGE, 1" Bore
5	7091541	8	BOLT, 5/16-18 X 3/4" Self Tap
6	3046782	1	BELT GUARD
7	5021097	1	PULLEY, IDLER V-NOTCH, 5"
8	3043613	2	IDLER PULLEY ASSEMBLY
9	3046813	2	BELT KEEPER
10	3046824	1	KEEPER, BELT TENSIONER
11	5025156	2	WASHER 3/8" SAE
12	5025013X16	1	BOLT, 3/8-16 X 2
13	5025017X22	1	BOLT, 1/2-13 X 2-3/4
14	5025056	1	NUT, 1/2-13 Hex Nylon Lock
15	5025128	6	NUT, 3/8-16 Hex Large Serrated Flange
16	5025011X10	1	BOLT, 5/16-18 X 1-1/4
17	7092111	3	U-CLIP, 5/16-18
18	7091811	6	BOLT, 5/16-18 X 3/4" Self Lock
19	5025145X6	6	CARRIAGE BOLT, 5/16-18 X 3/4
20	5025392	7	NUT, 5/16-18 Hex Nylock Flange
21	7010776	1	RETAINING RING, 1/2"
22	7014409	2	FLANGE BEARING, 9/16"
23	7044995	1	IDLER STUD
24	7091804	2	FLAT WASHER, 9/16" Narrow
25	3047253	1	IDLER ARM
26	5025171	1	WASHER, 3/8 Lock
27	5025035	1	NUT, 3/8-24 Hex
28	5020807	1	SPRING, Extension
29	7091067	1	NUT, 5/16-18 Hex Center Lock
30	5025013X48	1	BOLT, 3/8-16 X 6" GD5
31	5045023	1	SPACER, .52 X 1.00 X .44
32	5025305	1	WASHER, .41 X 1.75 X .14
33	5025013X6	2	BOLT, 3/8-16 X 3/4"
34	5025013X20	1	BOLT, 3/8-16 X 2-1/2"
35	5044933	1	SPACER, .39 X .75 X .38
36	5402623A	1	PLATE, BLOWER SUPPORT, IS4500Z

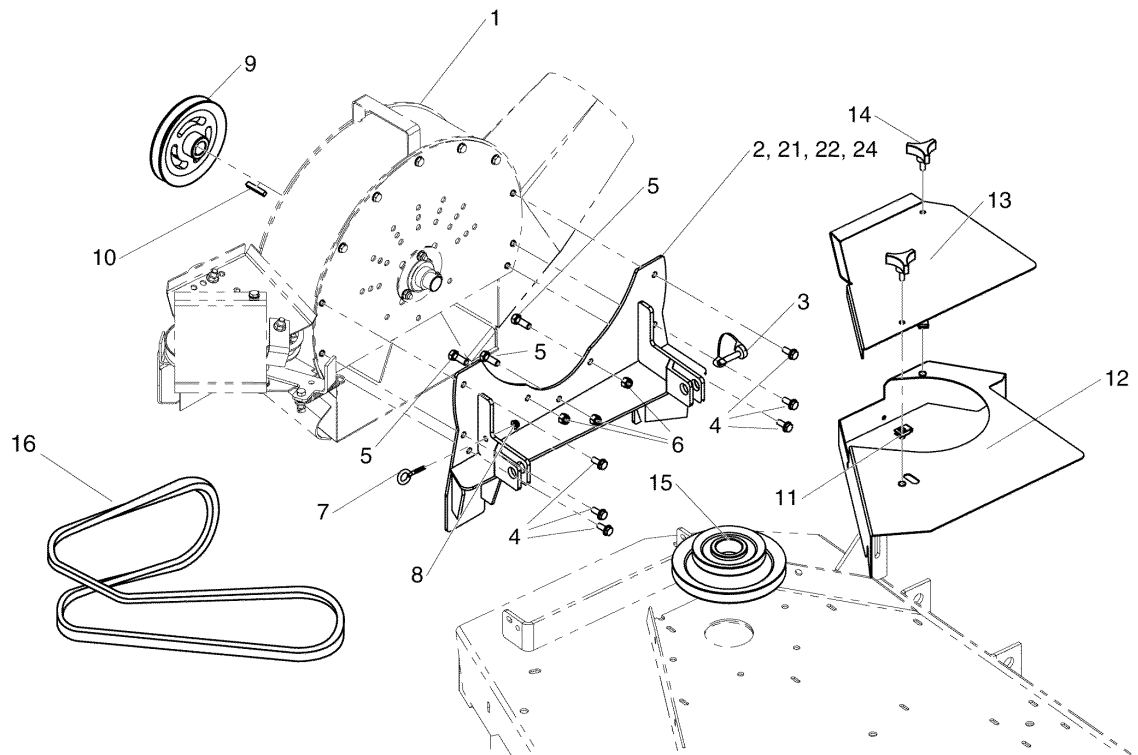
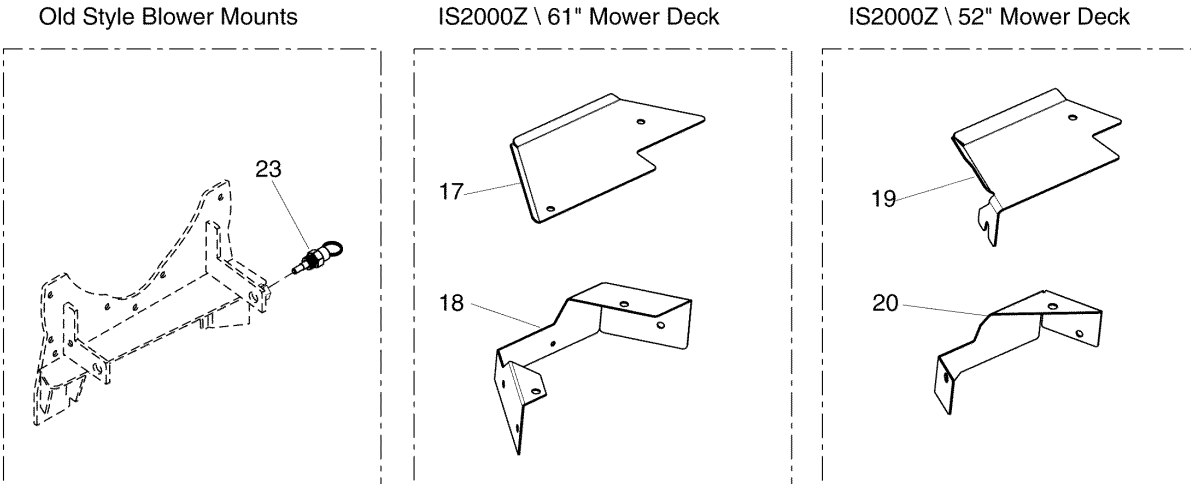
Footnotes

The above parts group applies to the following Mfg. Nos.:

5600009 (IS4500Z Series)

Blower Mount & Drive Group

NOTE: Unless noted otherwise, use the standard hardware torque specification chart.



The above parts group applies to the following Mfg. Nos.:

- | | |
|---|--------------------------|
| 5600004 (IS1500Z Series for S/N: 201262 | 5600003 (IS1500Z Series) |
| 5600061 (IS2000Z Series for S/N: 201262 | 5600007 (IS1000Z Series) |
| 5600001 (IS500Z & IS1500Z Series) | 5600008 (1000Z Series) |
| 5600006 (IS3000ZF & IS3000ZX Series) | |
| 5600057 (IS2000Z Series) | |
| 5600002 (IS1500Z Series) | |

Blower Mount & Drive Group

REF NO	PART NO.	QTY.	DESCRIPTION
1	-	-	BLOWER ASSEMBLY
2	5402632A	1	WELD, BLOWER MOUNT 44 BLACK (IS500Z & IS1500Z, 44" DECK)
2	5402633A	1	WELD, BLOWER MOUNT, 48" BLACK (IS1500Z, 48" DECK)
3	5100847	2	SNAPPERPIN, 5/16 X 2 (FITS NEWER STYLE BLOWER MOUNTS WITH FOUR TABS)
4	7091811	6	BOLT, 5/16-18 X 3/4" SELF LOCK
5	5025013X8	3	BOLT, 3/8-16 X 1" GD5 YZ
6	5025096	3	NUT, 3/8-16 HEX NYLON LOCK
7	5022205	1	EYEBOLT, 1/4-20 X 2
8	5025391	1	NUT, 1/4-20 HEX NYLOCK FLANGE
9	5046806	1	PULLEY, BLOWER AXLE, 44 & 48 (IS500Z, 44" DECK; IS1500Z, 44" & 48" DECK)
9	5046807	1	PULLEY, BLOWER AXLE, 52 (IS1000Z, IS1500Z, IS2000Z, 52" DECK)
9	5046808	1	PULLEY, BLOWER AXLE, 61 (1000Z, IS2000Z, IS3000ZF, IS3000ZX, 61" DECK)
10	5022726	1	KEY 1/4 SQ X 1 1/2 LONG
11	5022308	2	BODY CLIP, 5/16-18 X 1/2" DEEP
12	5400124A	1	GUARD, DECK - BLACK (IS500Z & IS1500Z, 44" DECK)
12	5061858A	1	GUARD, DECK - BLACK (IS1500Z, 48" & 52" DECK)
12	5047256A	1	GUARD, DECK - BLACK (IS1000Z, 52" DECK)
12	5400189A	1	GUARD, DECK - BLACK (1000Z, IS3000ZF, IS3000ZX, 61" DECK)
13	5400144A	1	SHIELD, BELT (IS500Z & IS1500Z, 44" DECK)
13	5400007A	1	SHIELD, BELT (IS1500Z, 48" & 52" DECK)
13	5047257A	1	SHIELD, BELT (IS1000Z, 52" DECK)
13	5400190A	1	SHIELD, BELT (1000Z, IS3000ZF, IS3000ZX, 61" DECK)
14	5022319	2	KNOB, PLASTIC, 5/16-18 X 3/4"
15	5023176	1	PULLEY, BLOWER 48" DECK (IS500Z, 44" DECK; IS1500Z, 44" & 48" DECK)
15	5023177	1	PULLEY, BLOWER 52" DECK (IS1000Z, IS1500Z, IS2000Z, 52" DECK)
15	5046702	1	PULLEY, BLOWER 61" DECK (1000Z, IS2000Z, IS3000ZF, IS3000ZX, 61" DECK)
16	7028334	1	BELT, # 7-3359 (IS500Z & IS1500Z, 44" DECK)
16	5022844	1	BELT, #7-6718, 92.0" E.L. (IS1500Z, 48" DECK & 1000Z, IS2000Z, IS3000ZF, IS3000ZX, 61" DECK)
16	5021006	1	BELT, #7-6717, 88.8" E.L. (IS1000Z, IS1500Z, IS2000Z, 52" DECK)
17	5401436A	1	GUARD, BELT, 61", 2000 FASTVAC - BLK (IS2000Z, 61" DECK)
18	5401435A	1	GUARD, DECK, 61", 2000 FASTVAC - BLK (IS2000Z, 61" DECK)
19	5401612A	1	GUARD, BELT, 52", 2000 FASTVAC - BLK (IS2000Z, 52" DECK)
20	5401613A	1	GUARD, DECK, 52", 2000 FASTVAC - BLK (IS2000Z, 52" DECK)
21	5402354A	1	WELD, BLOWER MOUNT, 52" BLACK (ALL MODELS, 52" DECK S/N: 2012628763 & Below)
22	5402380A	1	WELD, BLOWER MOUNT, 61" BLACK (ALL MODELS, 61" DECK)
23	5100010	2	PIN, LATCH, SPRING LOADED - PULL ACTION (FITS OLDER STYLE BLOWER MOUNTS WITH TWO TABS)
24	5403650A	1	WELD, BLOWER MOUNT, 52" BLACK (ALL MODELS, 52" DECK S/N: 2012628764 & Above)

Footnotes

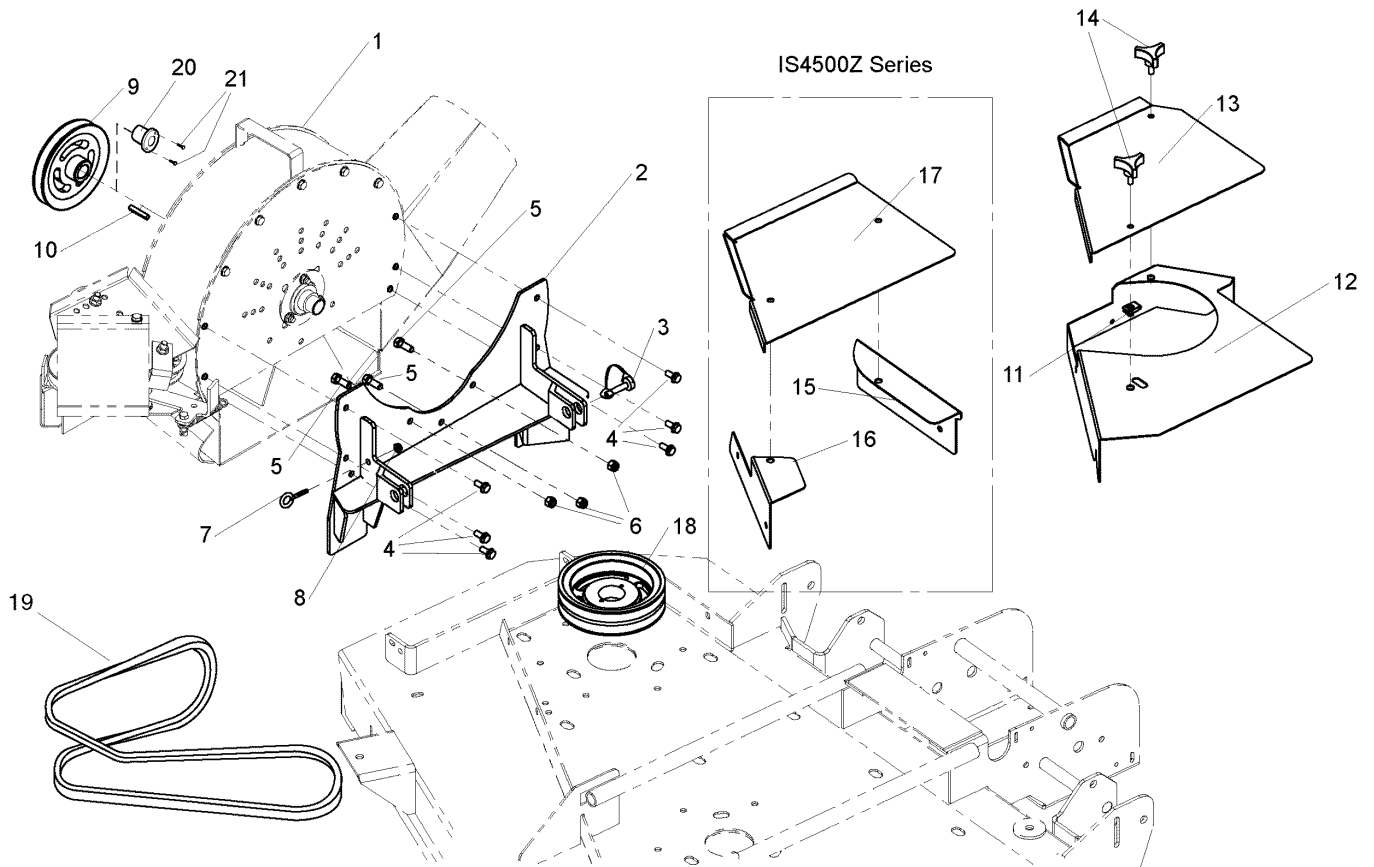
(*NOTE: IF REPLACING AN OLDER STYLE BLOWER MOUNT, ORDER THE APPROPRIATE NEW MOUNT AND TWO (2) OF P/N 5100847)

The above parts group applies to the following Mfg. Nos.:

5600004 (IS1500Z Series for S/N: 201262) 5600003 (IS1500Z Series)
 5600061 (IS2000Z Series for S/N: 201262) 5600007 (IS1000Z Series)
 5600001 (IS500Z & IS1500Z Series) 5600008 (1000Z Series)
 5600006 (IS3000ZF & IS3000ZX Series)
 5600057 (IS2000Z Series)
 5600002 (IS1500Z Series)

Blower Mount & Drive Group - IS3000ZL, IS3100Z & IS4500Z Series

NOTE: Unless noted otherwise,
use the standard hardware torque
specification chart.



The above parts group applies to the following Mfg. Nos.:

- 5600009 (IS4500Z Series)
- 5600060 (IS3100Z Series)
- 5600005 (IS3000ZL Series)
- 5600083 (IS3100ZBS Series)

Blower Mount & Drive Group - IS3000ZL, IS3100Z & IS4500Z Series

REF NO	PART NO.	QTY.	DESCRIPTION
1	-	-	BLOWER ASSEMBLY
2	5402380A	1	WELD, BLOWER MOUNT
3	5100847	2	SNAPPERPIN, 5/16 X 2
4	7091811	6	BOLT, 5/16-18 X 3/4" SELF LOCK
5	5025013X8	3	BOLT, 3/8-16 X 1" GD5
6	5025096	3	NUT, 3/8-16 HEX NYLON LOCK
7	5022205	1	EYE BOLT, 1/4-20 X 2"
8	5025391	1	NUT, 1/4-20 HEX NYLOCK FLANGE
9	5020816	1	PULLEY (IS3000ZL, IS3100Z, 61" DECK)
9	5022794	1	PULLEY, BH72 (IS4500Z, 61" DECK)
10	5022726	1	KEY 1/4 SQ X 1-1/2 LONG
11	5022308	2	BODY CLIP 5/16-18 X 1/2" DEEP
12	5400189A	1	WELD, GUARD DECK (IS3000ZL, IS3100Z, 61" DECK)
13	5400190A	1	BELT SHIELD, 61" BLOWER DECK (IS3000ZL, IS3100Z, 61" DECK)
14	5022319	2	KNOB, PLASTIC, 5/16-18 X 3/4"
15	5400187A	1	WELD, GUARD DECK, BACK (IS4500Z, 61" DECK)
16	5400338A	1	WELD, GUARD DECK, FRONT (IS4500Z, 61" DECK)
17	5400188A	1	BELT SHIELD, 61" BLOWER DECK (IS4500Z, 61" DECK)
18	5100011	1	PULLEY (IS3000ZL, IS3100Z, 61" DECK)
18	5023342	1	PULLEY, DH4780 (IS4500Z, 61" DECK)
19	5100034	1	BELT, #7-8764 (IS3000ZL & IS3100Z MODELS)
19	5100974	1	BELT, 48X1030, 1/2 X 103", PREM CONST. (IS4500Z, 61" DECK ONLY)
20	5020819	1	BUSHING, TAPERED HUB (IS4500Z, 61" DECK ONLY)
21	5025010X8	2	BOLT, 1/4-20 X 1" GD5 (IS4500Z, 61" DECK ONLY)

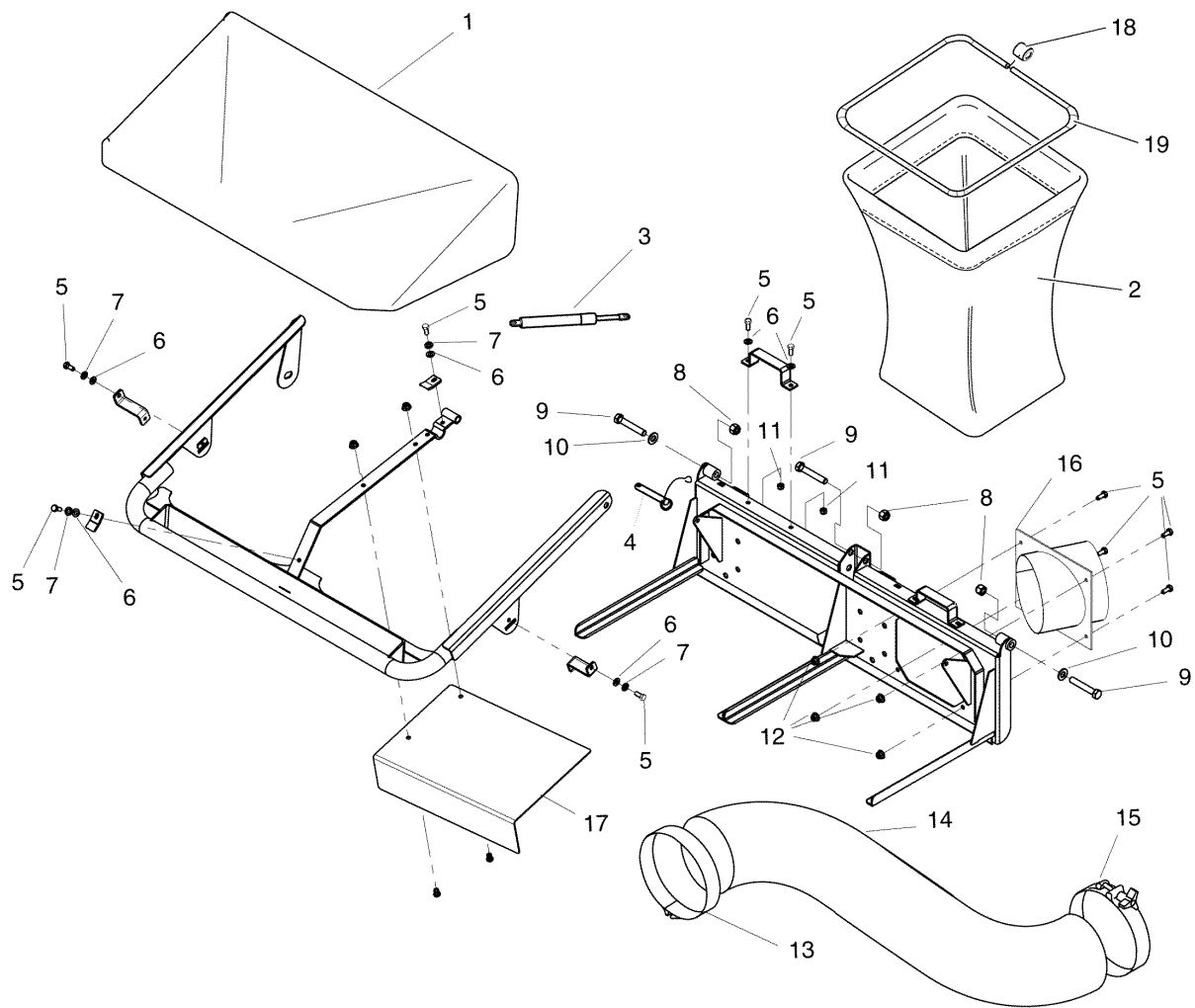
Footnotes

The above parts group applies to the following Mfg. Nos.:

5600009 (IS4500Z Series)
5600060 (IS3100Z Series)
5600005 (IS3000ZL Series)
5600083 (IS3100ZBS Series)

2-Bag Catcher & Cover Group

NOTE: Unless noted otherwise,
use the standard hardware torque
specification chart.



The above parts group applies to the following Mfg. Nos.:

5600001 (IS500Z & IS1500Z Series)

5600002 (IS1500Z Series)

2-Bag Catcher & Cover Group

REF NO	PART NO.	QTY.	DESCRIPTION
1	5100153	1	2 BAG AIR DOME
2	5100150	2	CATCHER BAG W/ HANDLE
3	5100152	2	GAS CYLINDER
4	5100151	1	DETENT PIN W/ LANYARD
5	5025011X6	12	BOLT, 5/16-18 X 3/4" GRD5
6	5025155	8	WASHER, 5/16" SAE
7	5025170	4	WASHER, 5/16" LOCK
8	5025056	3	NUT, 1/2-13 HEX NYLON LOCK
9	5025018X24	3	BOLT, 1/2-20 X 3" GD5
10	5025158	2	WASHER, 1/2" SAE
11	5025057	2	NUT 5/16-18 HEX NYLON LOCK
12	5025392	4	NUT 5/16-18 HEX NYLOCK FLANGE
13	5022875	1	HOSE CLAMP
14	5022833	1	HOSE
15	5022876	1	HOSE CLAMP
16	5400147A	1	WELD, INLET BLOWER
17	5100036A	1	BAFFLE
18	5100730	2	BAG FRAME CONNECTOR, PLASTIC
19	5100729	2	BAG FRAME

Footnotes

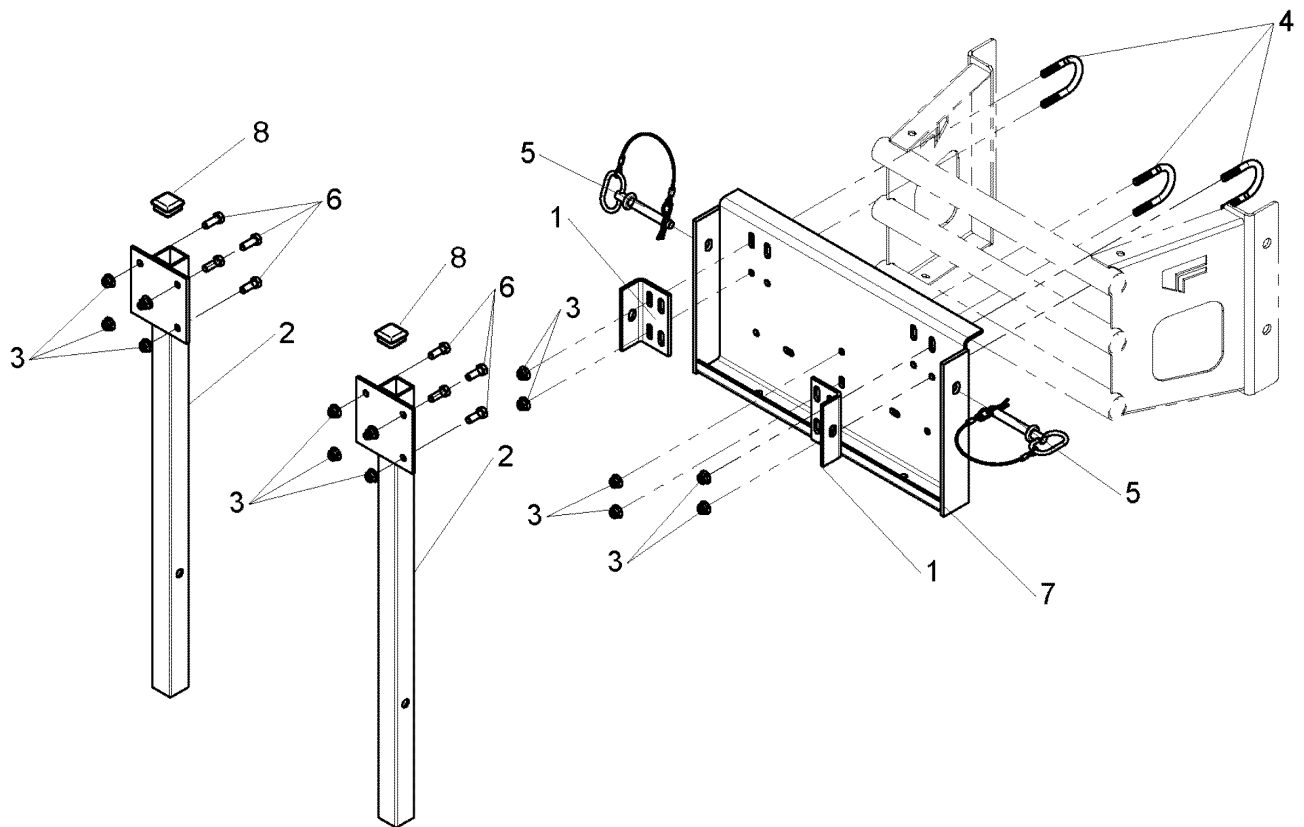
The above parts group applies to the following Mfg. Nos.:

5600001 (IS500Z & IS1500Z Series)

5600002 (IS1500Z Series)

2-Bag & 3-Bag Mount - IS500Z, 1500Z & IS2000Z

NOTE: Unless noted otherwise,
use the standard hardware torque
specification chart.



The above parts group applies to the following Mfg. Nos.:

5600061 (IS2000Z Series for S/N: 201262)

5600004 (IS1500Z Series for S/N: 201262)

5600002 (IS1500Z Series)

5600057 (IS2000Z Series)

5600001 (IS500Z & IS1500Z Series)

5600003 (IS1500Z Series)

2-Bag & 3-Bag Mount - IS500Z, 1500Z & IS2000Z

REF NO	PART NO.	QTY.	DESCRIPTION
1	5402665A	2	MOUNT, TAB, BLACK
2	5400043A	2	WELD, MOUNT, POST - BLK
3	5025394	14	NUT, 3/8-16 HEX NYLOCK FLANGE
4	5100009	3	U-BOLT, 3/8 X 1-1/4
5	5100013	2	PIN, HITCH, .50 X 3.25 W/ LAY
6	5025013X8	8	BOLT, 3/8-16 X 1" GD5 YZ
7	5402667A	1	WELD, BAGGER MNT,500/1500/4500-BLK
8	5022848	2	CAP, PLASTIC, 1-1/2" X 1-1/2

Footnotes

The above parts group applies to the following Mfg. Nos.:

5600061 (IS2000Z Series for S/N: 201262)

5600004 (IS1500Z Series for S/N: 201262)

5600002 (IS1500Z Series)

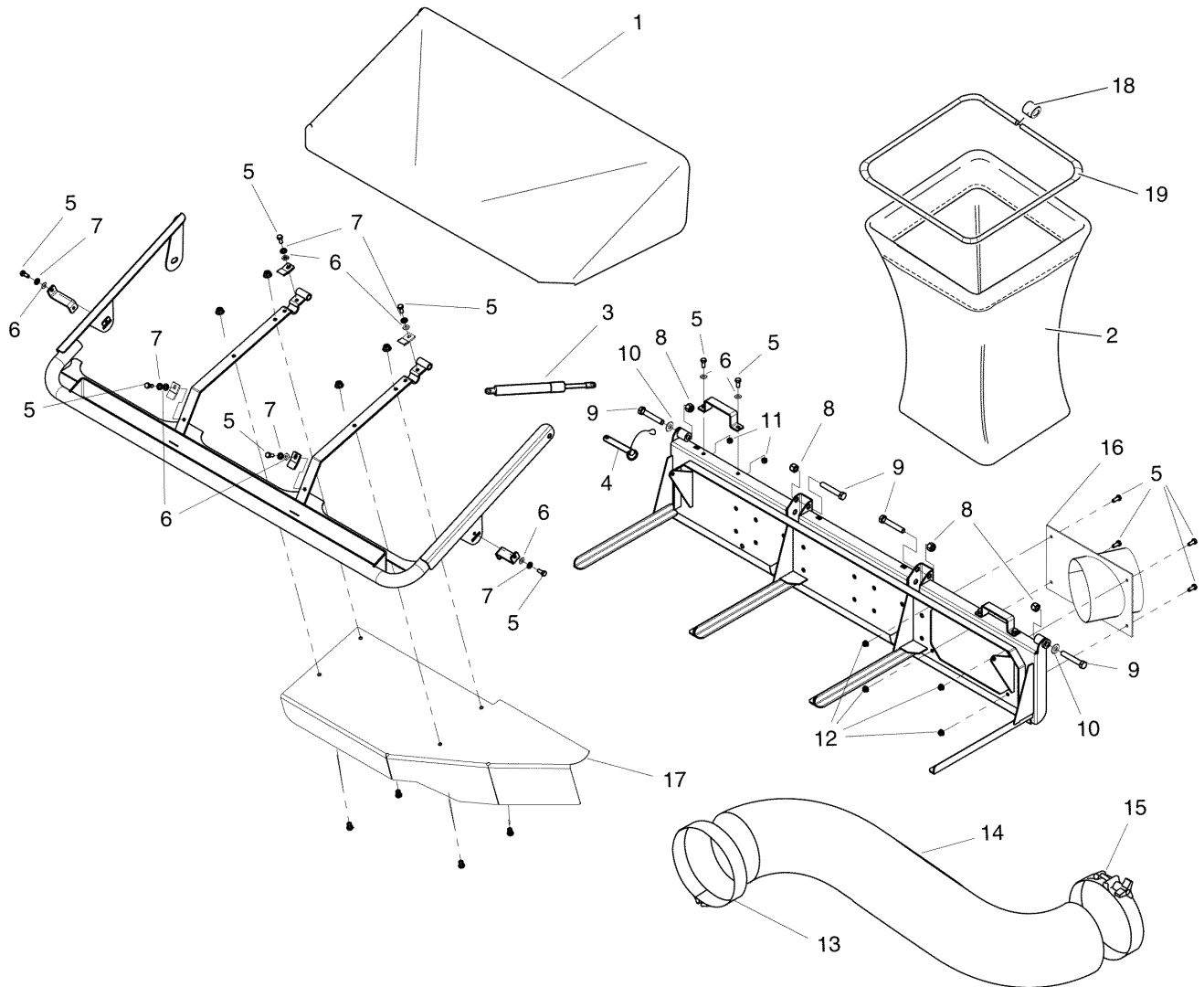
5600057 (IS2000Z Series)

5600001 (IS500Z & IS1500Z Series)

5600003 (IS1500Z Series)

3-Bag Catcher & Cover Group

NOTE: Unless noted otherwise,
use the standard hardware torque
specification chart.



The above parts group applies to the following Mfg. Nos.:

- | | |
|--|--|
| 5600006 (IS3000ZF & IS3000ZX Series) | 5600007 (IS1000Z Series) |
| 5600060 (IS3100Z Series) | 5600008 (1000Z Series) |
| 5600009 (IS4500Z Series) | 5600004 (IS1500Z Series for S/N: 201262) |
| 5600003 (IS1500Z Series) | 5600083 (IS3100ZBS Series) |
| 5600061 (IS2000Z Series for S/N: 201262) | 5600057 (IS2000Z Series) |
| 5600005 (IS3000ZL Series) | |

3-Bag Catcher & Cover Group

REF NO	PART NO.	QTY.	DESCRIPTION
1	5100154	1	3 BAG AIR DOME
2	5100150	3	CATCHER BAG W/ HANDLE
3	5100152	2	GAS CYLINDER
4	5100151	1	DETENT PIN W/ LANYARD
5	5025011X6	14	BOLT, 5/16-18 X 3/4" GRD5
6	5025155	10	WASHER, 5/16" SAE
7	5025170	6	WASHER, 5/16" LOCK
8	5025056	4	NUT, 1/2-13 HEX NYLON LOCK
9	5025018X24	4	BOLT, 1/2-20 X 3" GD5
10	5025158	2	WASHER, 1/2" SAE
11	5025057	4	NUT, 5/16-18 HEX NYLON LOCK
12	5025392	4	NUT, 5/16-18 HEX NYLOCK FLANGE
13	5022875	1	CLAMP, HOSE, UPPER
14	5022833	1	HOSE, FLEXIBLE, 7" DIA. X 58
15	5022876	1	CLAMP, HOSE, LOWER
16	5400145A	1	WELD, INLET BLOWER 3-BAG BLACK
17	5400197A	1	BAFFLE
18	5100730	1	BAG FRAME CONNECTOR, PLASTIC
19	5100729	1	BAG FRAME

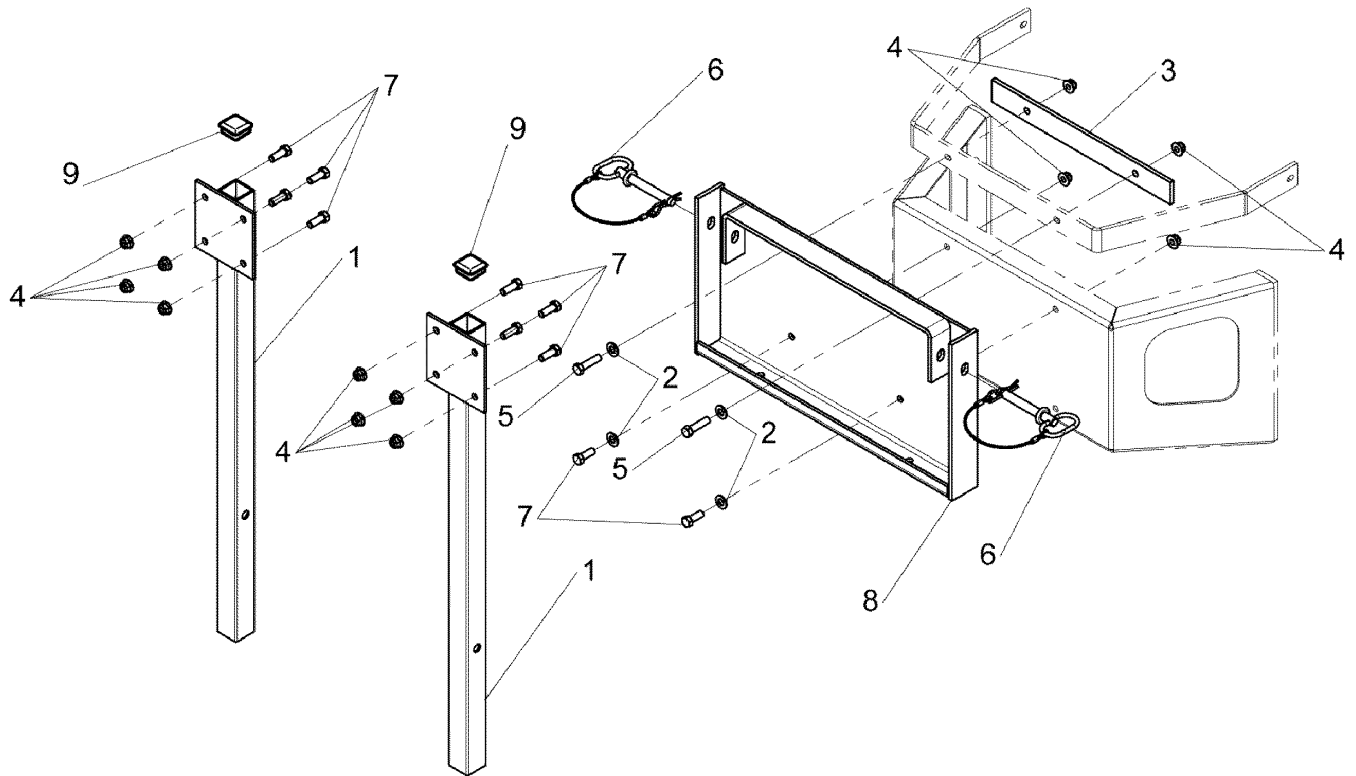
Footnotes

The above parts group applies to the following Mfg. Nos.:

5600006 (IS3000ZF & IS3000ZX Series)	5600007 (IS1000Z Series)
5600060 (IS3100Z Series)	5600008 (1000Z Series)
5600009 (IS4500Z Series)	5600004 (IS1500Z Series for S/N: 201262)
5600003 (IS1500Z Series)	5600083 (IS3100ZBS Series)
5600061 (IS2000Z Series for S/N: 201262)	5600057 (IS2000Z Series)
5600005 (IS3000ZL Series)	

3-Bag Mount - 1000Z, IS1000Z, 52" & 61" Deck

NOTE: Unless noted otherwise,
use the standard hardware torque
specification chart.



The above parts group applies to the following Mfg. Nos.:

5600007 (IS1000Z Series)

5600008 (1000Z Series)

3-Bag Mount - 1000Z, IS1000Z, 52" & 61" Deck

REF NO	PART NO.	QTY.	DESCRIPTION
1	5400043A	2	WELD, MOUNT, POST - BLK
2	5025156	2	WASHER, 3/8" SAE (2 washers removed from screen)
3	5400226A	1	BAR, BAGGER SUPPORT, BLACK.
4	5025394	12	NUT, 3/8-16 HEX NYLOCK FLANGE
5	5025013X12	2	BOLT, 3/8-16 X 1-1/2" GD5 YZ
6	5100013	2	PIN, HITCH, .50 X 3.25 W/ LAY
7	5025013X8	8	BOLT, 3/8-16 X 1" GD5 YZ (2 bolts removed from screen)
8	5400221A	1	WELD, BAGR MNT-1000/IS1000 BLK
9	5022848	2	CAP, PLASTIC, 1-1/2" X 1-1/2"

Footnotes

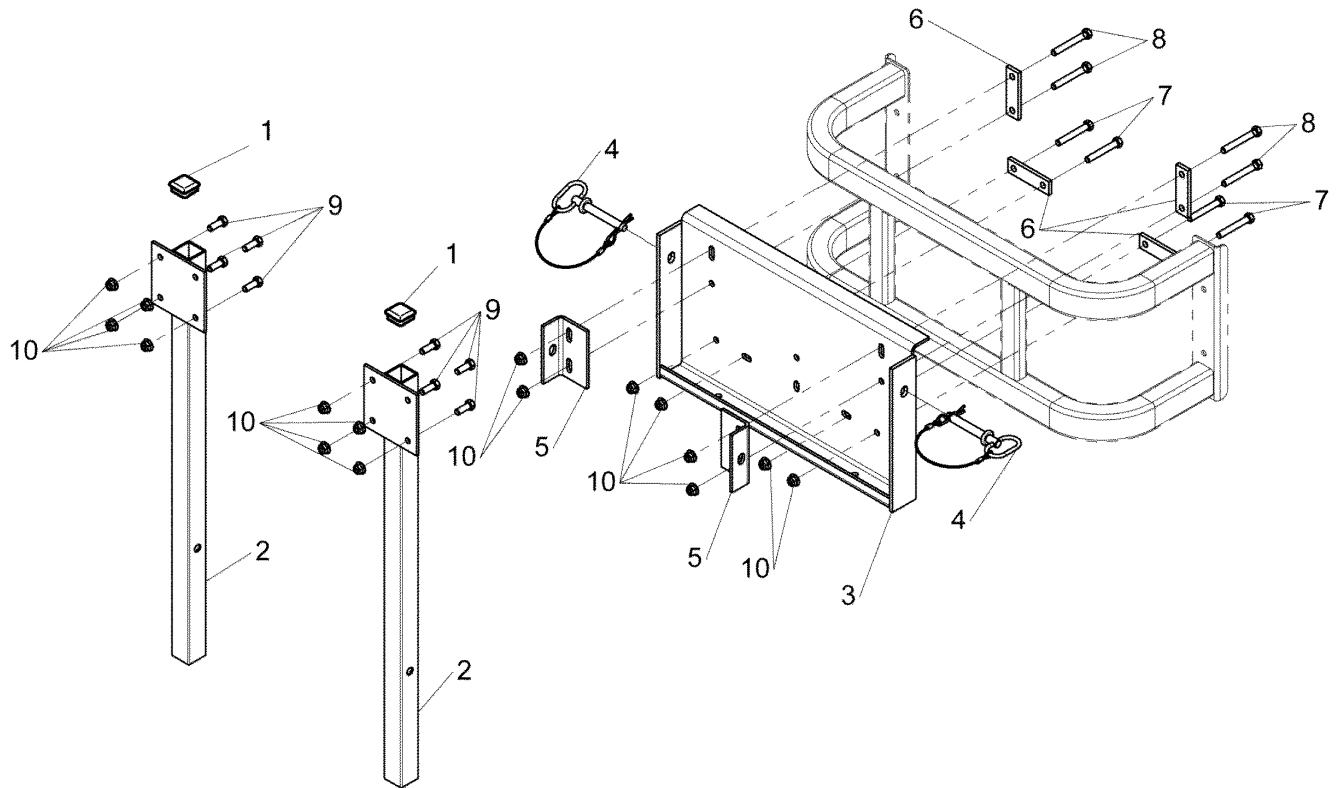
The above parts group applies to the following Mfg. Nos.:

5600007 (IS1000Z Series)

5600008 (1000Z Series)

3-Bag Mount - IS3000Z, 61" Deck

NOTE: Unless noted otherwise,
use the standard hardware torque
specification chart.



The above parts group applies to the following Mfg. Nos.:

5600005 (IS3000ZL Series)

5600006 (IS3000ZF & IS3000ZX Series)

3-Bag Mount - IS3000Z, 61" Deck

REF NO	PART NO.	QTY.	DESCRIPTION
1	5022848	2	CAP, PLASTIC, 1-1/2" X 1-1/2
2	5400043A	2	WELD, MOUNT, POST - BLK
3	5400149A	1	WELD, BAGGER MNT, 1500/4500-BLK
4	5100013	2	PIN, HITCH, .50 X 3.25 W/ LAY
5	5400041A	2	MOUNT, TAB, BLACK
6	5046992A	4	CLAMP, BAR
7	5025013X20	4	BOLT, 3/8-16 X 2-1/2" GD5 YZ
8	5025013X22	4	BOLT, 3/8-16 X 2-3/4" GD5 YZ
9	5025013X8	8	BOLT, 3/8-16 X 1" GD5 YZ
10	5025394	16	NUT, 3/8-16 HEX NYLOCK FLANGE

Footnotes

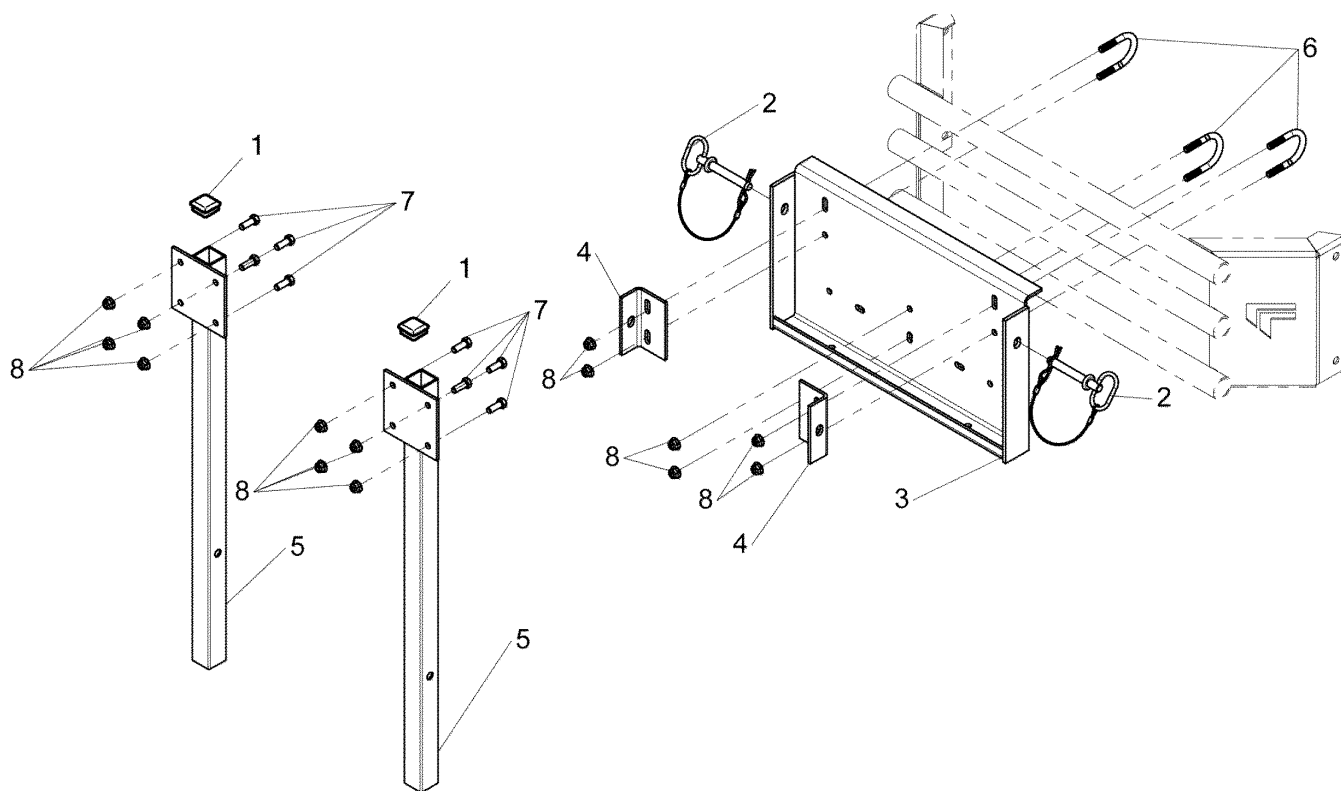
The above parts group applies to the following Mfg. Nos.:

5600005 (IS3000ZL Series)

5600006 (IS3000ZF & IS3000ZX Series)

3-Bag Mount - IS4500Z, 61" Deck

NOTE: Unless noted otherwise,
use the standard hardware torque
specification chart.



The above parts group applies to the following Mfg. Nos.:
5600009 (IS4500Z Series)

3-Bag Mount - IS4500Z, 61" Deck

REF NO	PART NO.	QTY.	DESCRIPTION
1	5022848	2	CAP, PLASTIC, 1-1/2" X 1-1/2
2	5100013	2	PIN, HITCH, .50 X 3.25 W/ LAY
3	5400149A	1	WELD, BAGGER MNT, 1500/4500-BLK
4	5400041A	2	MOUNT, TAB, BLACK
5	5400043A	2	WELD, MOUNT, POST - BLK
6	5100009	3	U-BOLT, 3/8 X 1-1/4
7	5025013X8	8	BOLT, 3/8-16 X 1" GD5 YZ
8	5025394	14	NUT, 3/8-16 HEX NYLOCK FLANGE

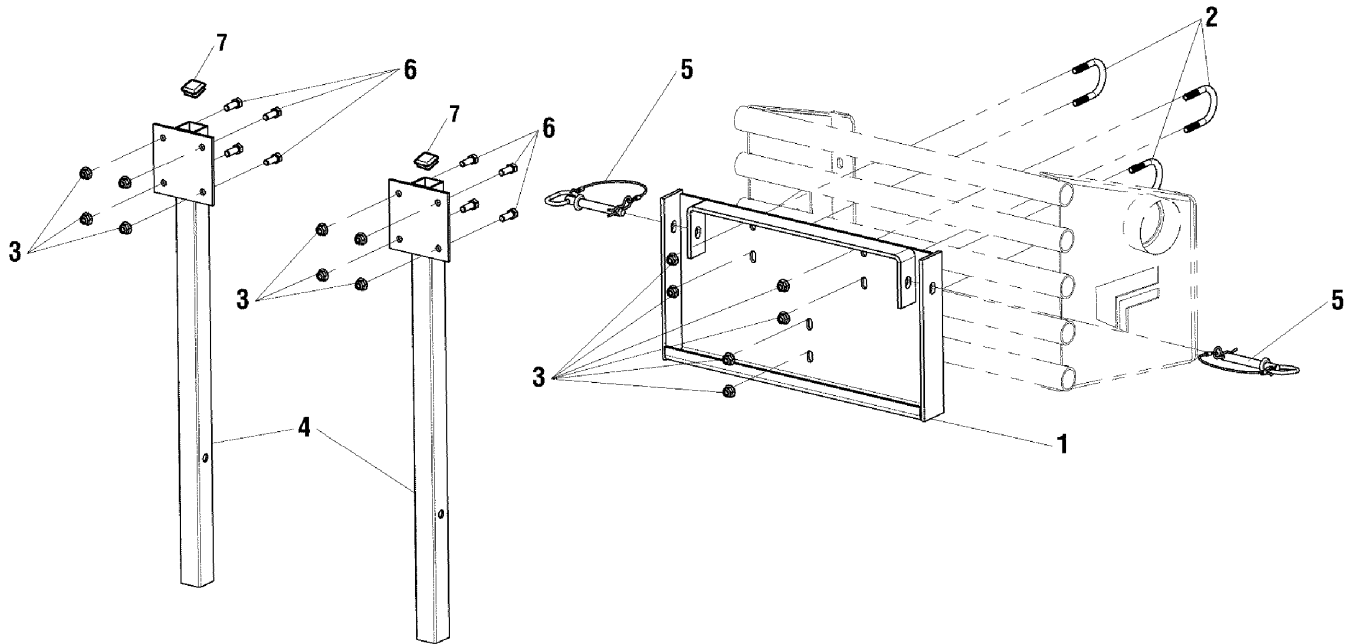
Footnotes

The above parts group applies to the following Mfg. Nos.:

5600009 (IS4500Z Series)

3-Bag Mount - IS3100Z Series

NOTE: Unless noted otherwise,
use the standard hardware torque
specification chart.



The above parts group applies to the following Mfg. Nos.:

5600083 (IS3100ZBS Series)

5600060 (IS3100Z Series)

3-Bag Mount - IS3100Z Series

REF NO	PART NO.	QTY.	DESCRIPTION
1	5401514	1	WELD, BAGGER MOUNT, IS3100Z
2	5100009	3	U-BOLT, 3/8" X 1-1/4"
3	5025394	14	NUT, 3/8-16 HEX NYLOCK FLANGE
4	5400043	2	WELD, MOUNT, POST
5	5100013	2	PIN, HITCH, .50 X 3.25 W/ LANYARD
6	5025013X8	8	BOLT, 3/8-16 X 1" GD5
7	5022848	2	CAP, PLASTIC, 1-1/2" X 1-1/2"

Footnotes

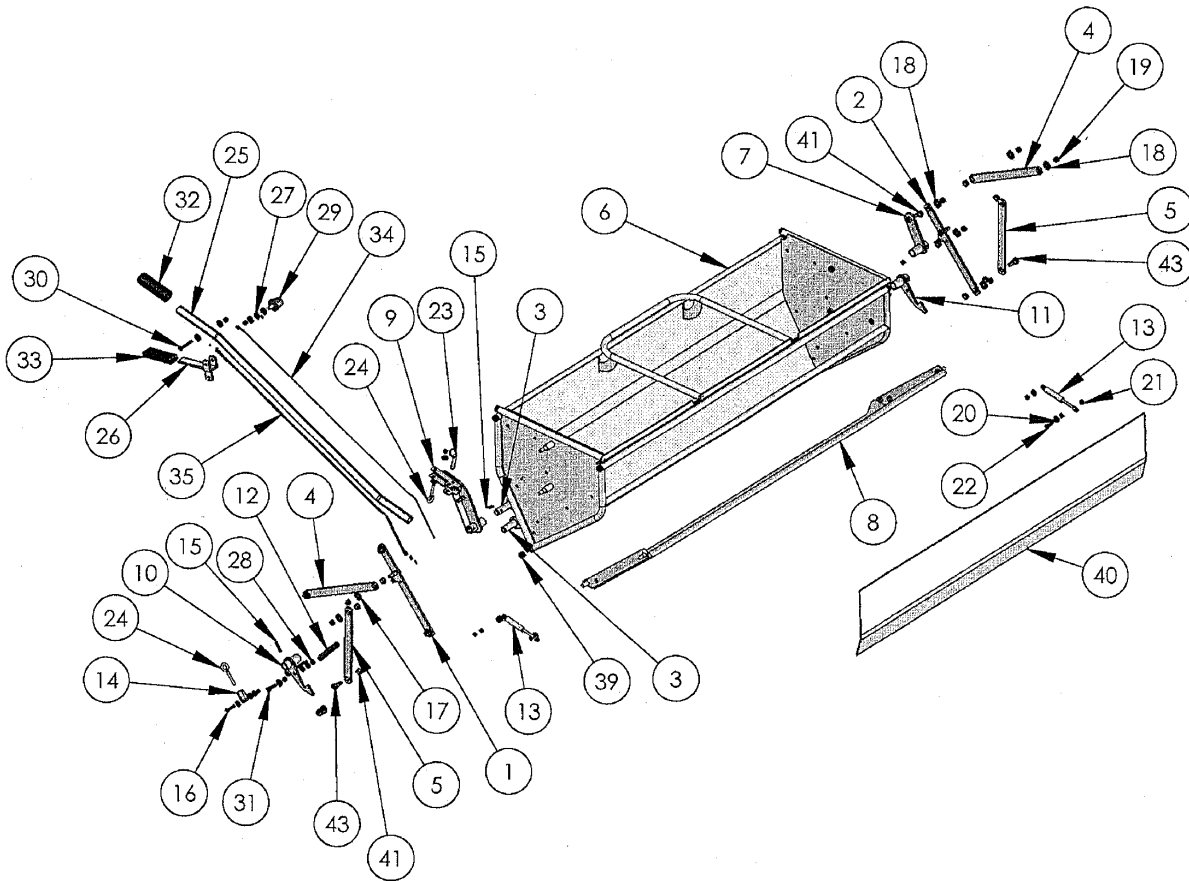
The above parts group applies to the following Mfg. Nos.:

5600083 (IS3100ZBS Series)

5600060 (IS3100Z Series)

3-Bag Dump From Seat

NOTE: Unless noted otherwise,
use the standard hardware torque
specification chart.



The above parts group applies to the following Mfg. Nos.:
5100857

3-Bag Dump From Seat

REF NO	PART NO.	QTY.	DESCRIPTION
1	5100857X1		MASTER LINK, LH
2	5100857X2		MASTER LINK, RH
4	5100857X4		DRIVE LINK
5	5100857X5		SLAVE LINK
7	5100857X7		TORQUE LINK ASSEMBLY
9	5100857X9		HANDLE PIVOT
10	5100857X10		LATCH ASSEMBLY, LH
11	5100857X11		LATCH ASSEMBLY, RH
12	5100857X12		TENSION SPRING
13	5100857X13		GAS SPRING
14	5100857X14		CABLE ADJUST. BLOCK
26	5100857X26		DFS WELD LEVER
29	5100857X29		RUBBER STOPPER
32	5100857X32		RUBBER GRIP
33	5100857X33		RUBBER GRIP
34	5100857X34		1/16 CABLE
37	5100857X37		1/16 CABLE TIE
41	5100857X41		FLANGE BUSHING
43	5100857X43		SHOULDER BOLT

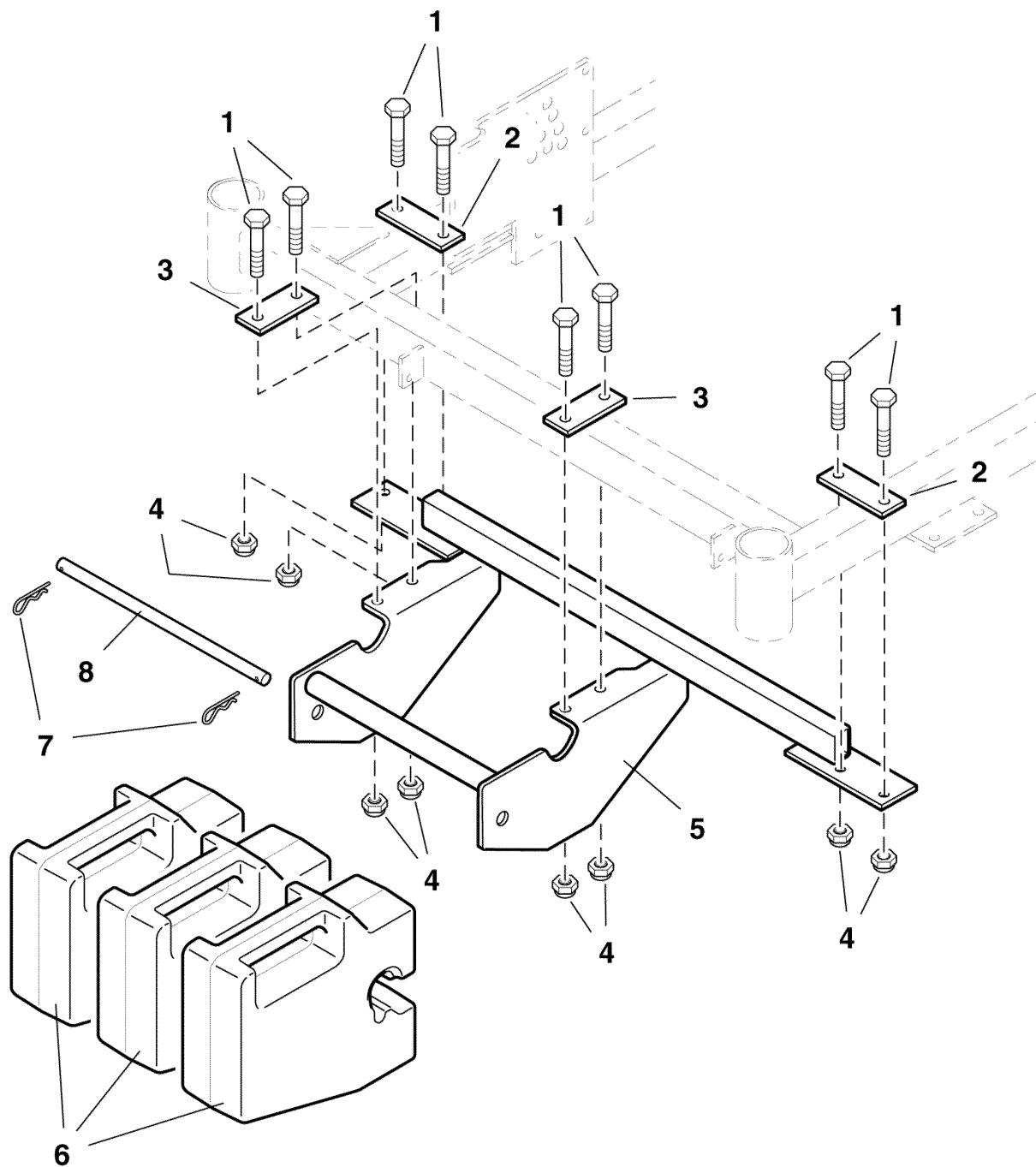
Footnotes

The above parts group applies to the following Mfg. Nos.:

5100857

Weight Mount Group - 1000Z

NOTE: Unless noted otherwise,
use the standard hardware torque
specification chart.



The above parts group applies to the following Mfg. Nos.:
5600008 (1000Z Series)

Weight Mount Group - 1000Z

REF NO	PART NO.	QTY.	DESCRIPTION
1	5025013X24	8	BOLT, 3/8-16 X 3" GD5 YZ
2	5047510A	2	BAR CLAMP, SIDE TUBE
3	5046715A	2	PLATE, BRACE-LOWER
4	5025096	8	NUT, 3/8-16 HEX NYLON LOCK
5	5049770A	1	WEIGHT MOUNT WELDMENT, 3-BAG
6	1717627	3	WEIGHT-QUICK ATTACH 50LB SUITCAS PAINTED
7	5025210	2	PIN, HAIR, .0915 X 1-7/8
8	5047512	1	ROD, WEIGHT RETAINING

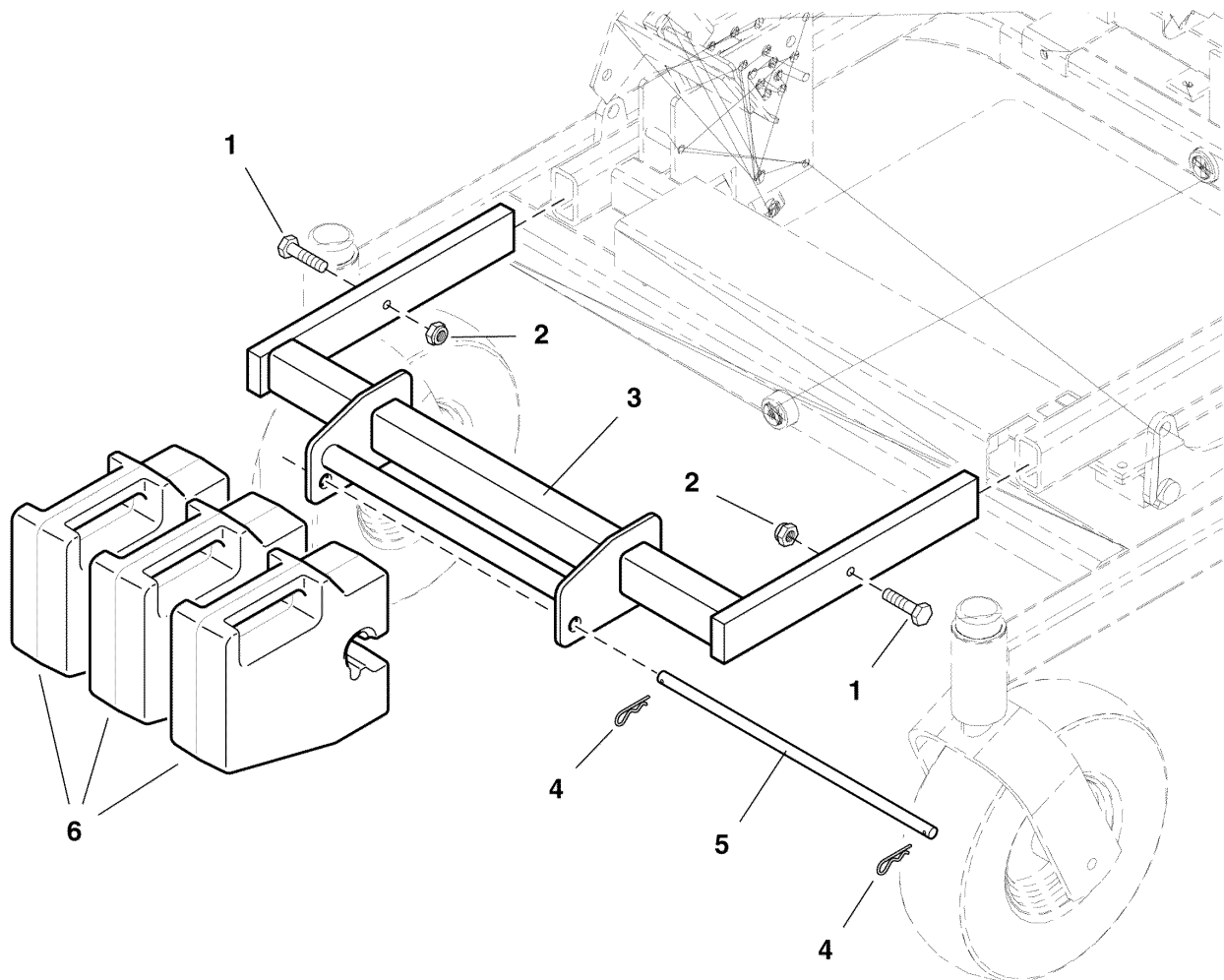
Footnotes

The above parts group applies to the following Mfg. Nos.:

5600008 (1000Z Series)

Weight Mount Group - IS3000Z & IS3100Z Series

NOTE: Unless noted otherwise,
use the standard hardware torque
specification chart.



The above parts group applies to the following Mfg. Nos.:

5600006 (IS3000ZF & IS3000ZX Series)

5600005 (IS3000ZL Series)

5600083 (IS3100ZBS Series)

5600060 (IS3100Z Series)

Weight Mount Group - IS3000Z & IS3100Z Series

REF NO	PART NO.	QTY.	DESCRIPTION
1	5025013X16	2	BOLT, 3/8-16 X 2" GD5 YZ
2	5025096	2	NUT, 3/8-16 HEX NYLON LOCK
3	5046169A	1	3-BAG WEIGHT RACK WELDMENT
4	5025210	2	PIN, HAIR, .0915 X 1-7/8
5	5046174A	1	ROD, WEIGHT RETAINER
6	1717627	3	WEIGHT-QUICK ATTACH 50LB SUITCAS PAINTED

Footnotes

The above parts group applies to the following Mfg. Nos.:

5600006 (IS3000ZF & IS3000ZX Series)

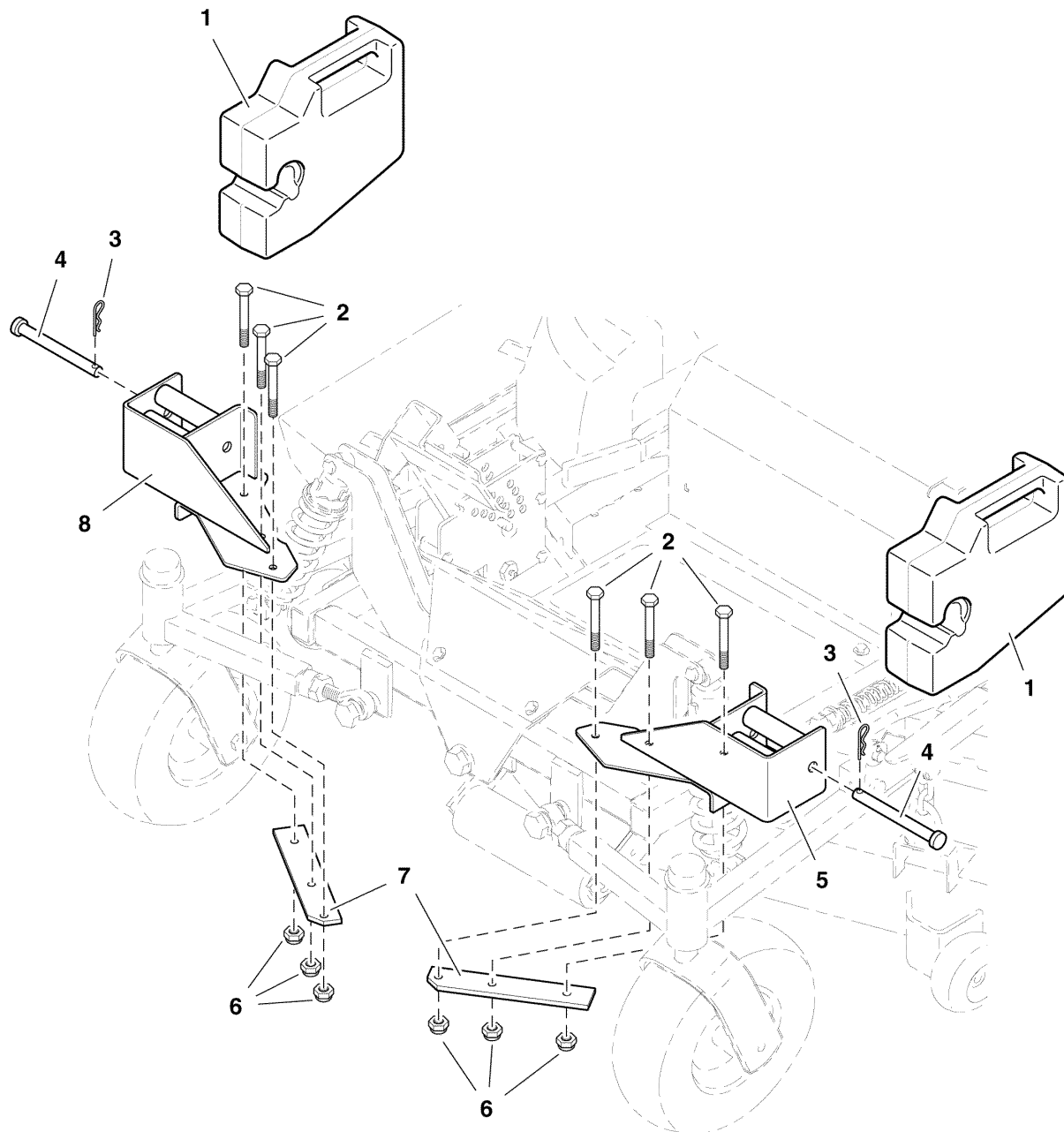
5600005 (IS3000ZL Series)

5600083 (IS3100ZBS Series)

5600060 (IS3100Z Series)

Weight Mount Group - IS1000Z

NOTE: Unless noted otherwise,
use the standard hardware torque
specification chart.



The above parts group applies to the following Mfg. Nos.:
5600007 (IS1000Z Series)

Weight Mount Group - IS1000Z

REF NO	PART NO.	QTY.	DESCRIPTION
1	1717627	2	WEIGHT-QUICK ATTACH 50LB SUITCAS PAINTED
2	5025011X20	6	BOLT, 5/16-18 X 2-1/2" GD5 YZ
3	5025210	2	PIN, HAIR, .0915 X 1-7/8
4	5022877	2	PIN,CLEVIS, 1/2" X 4 1/2",PLTD
5	5047241A	1	WEIGHT MOUNT BRACKET W'MENT-LH
6	5025057	6	NUT, 5/16-18 HEX NYLON LOCK
7	5047234A	2	CLAMP, BAR
8	5047242A	1	WEIGHT MOUNT BRACKET W'MENT-RH

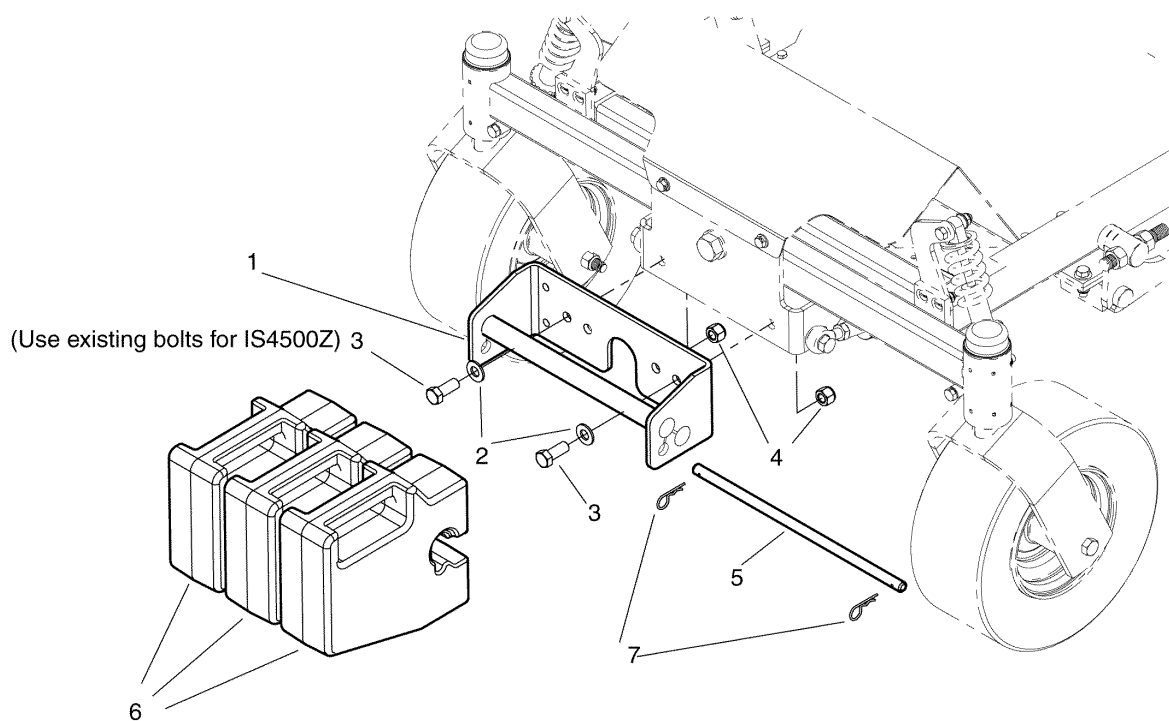
Footnotes

The above parts group applies to the following Mfg. Nos.:

5600007 (IS1000Z Series)

Weight Mount Group - IS500Z, IS1500Z & IS4500Z

NOTE: Unless noted otherwise,
use the standard hardware torque
specification chart.



The above parts group applies to the following Mfg. Nos.:

- 5600004 (IS1500Z Series for S/N: 201262)
- 5600001 (IS500Z & IS1500Z Series)
- 5600002 (IS1500Z Series)
- 5600009 (IS4500Z Series)
- 5600003 (IS1500Z Series)

Weight Mount Group - IS500Z, IS1500Z & IS4500Z

REF NO	PART NO.	QTY.	DESCRIPTION
1	5049082A	1	HOLDER ASMY-WEIGHT CONS Z CAT - BLACK
2	5025158	2	WASHER, 1/2" SAE
3	5025018X10	2	BOLT, 1/2-20 X 1-1/4" GD5 YZ
4	5025098	2	NUT, 1/2-20 HEX NYLON LOCK
5	5049143	1	ROD-.500DIA 13.75LG YELLOW CON
6	1717627	3	WEIGHT-QUICK ATTACH 50LB SUITCAS PAINTED
7	5025210	2	PIN, HAIR, .0915 X 1-7/8

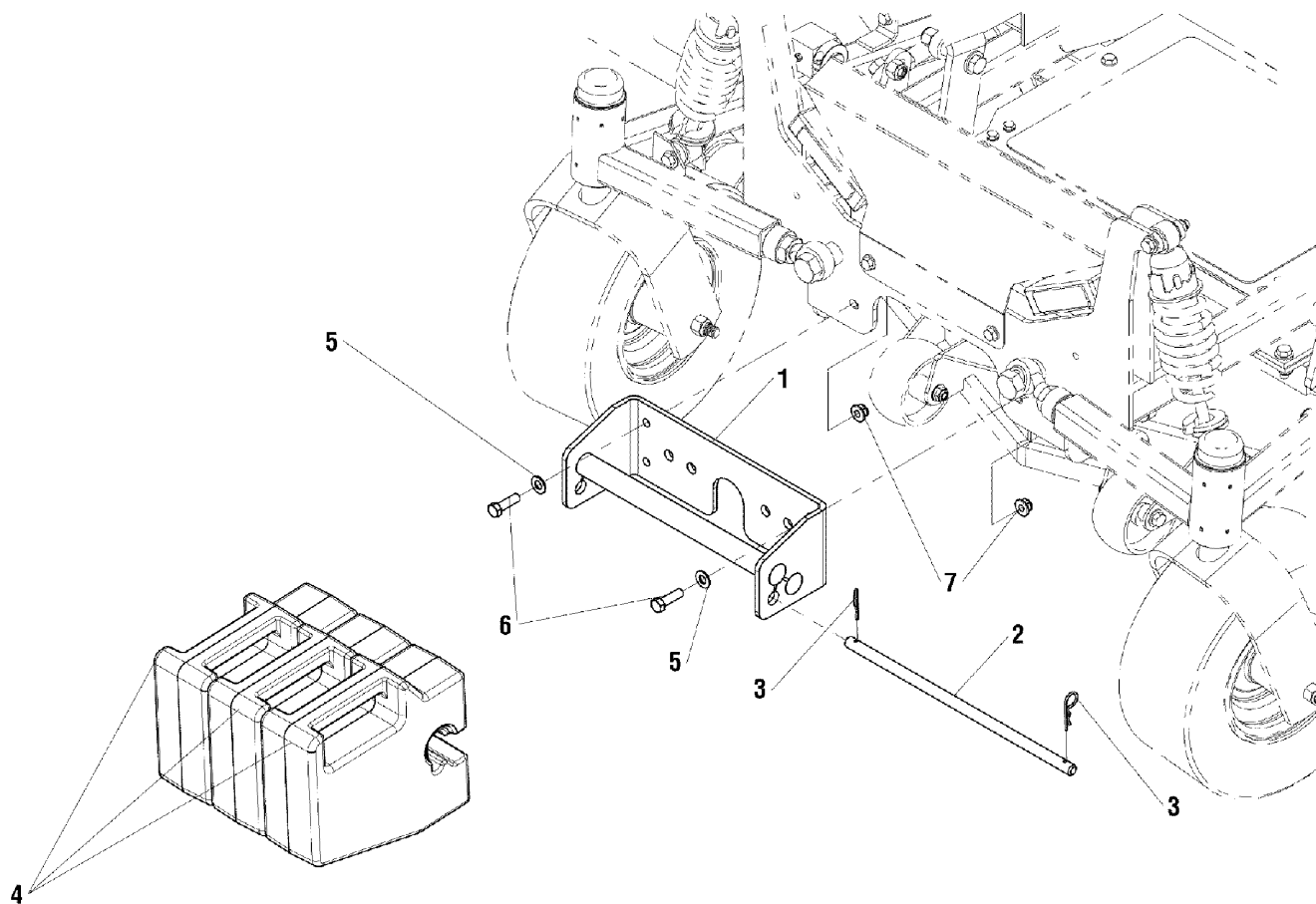
Footnotes

The above parts group applies to the following Mfg. Nos.:

- 5600004 (IS1500Z Series for S/N: 201262)
- 5600001 (IS500Z & IS1500Z Series)
- 5600002 (IS1500Z Series)
- 5600009 (IS4500Z Series)
- 5600003 (IS1500Z Series)

Weight Mount Group - IS2000Z

NOTE: Unless noted otherwise,
use the standard hardware torque
specification chart.



The above parts group applies to the following Mfg. Nos.:

5600057 (IS2000Z Series)

5600061 (IS2000Z Series for S/N: 201262)

Weight Mount Group - IS2000Z

REF NO	PART NO.	QTY.	DESCRIPTION
1	5049082A	1	HOLDER ASMY-WEIGHT CONS Z CAT - BLACK
2	5049143	1	ROD-.500DIA 13.75LG YELLOW CON
3	5025210	2	PIN, HAIR, .0915 X 1-7/8
4	1717627	3	WEIGHT-QUICK ATTACH 50LB SUITCAS PAINTED
5	5025156	2	WASHER, 3/8" SAE
6	5025013X10	2	BOLT, 3/8-16 X 1-1/4" GD5
7	5025394	2	NUT, 3/8-16 HEX NYLOCK FLANGE

Footnotes

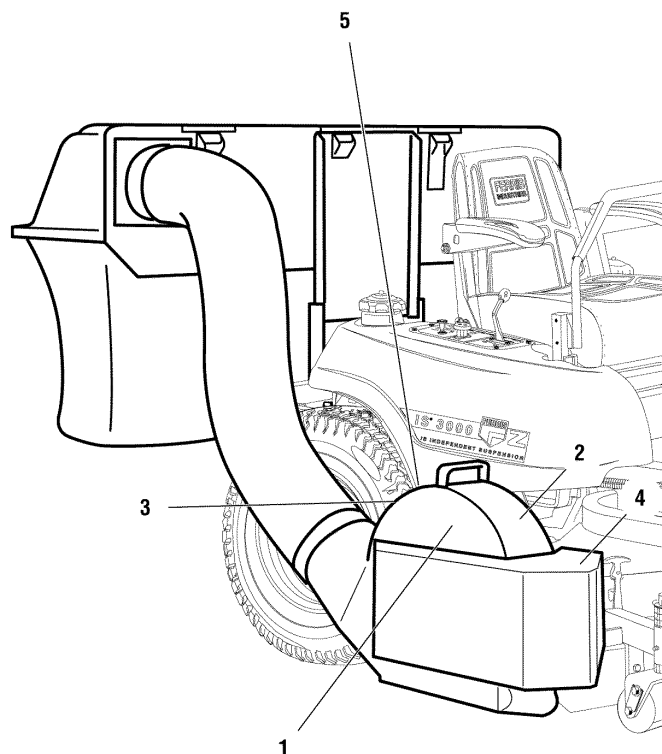
The above parts group applies to the following Mfg. Nos.:

5600057 (IS2000Z Series)

5600061 (IS2000Z Series for S/N: 201262)

Decals - Brand, Safety & Instruction

NOTE: Unless noted otherwise, use the standard hardware torque specification chart.



1 — **FAST-Vac**



The above parts group applies to the following Mfg. Nos.:

- | | | |
|--|--|--------------------------|
| 5600008 (1000Z Series) | 5600083 (IS3100ZBS Series) | 5600003 (IS1500Z Series) |
| 5600007 (IS1000Z Series) | 5600002 (IS1500Z Series) | |
| 5600001 (IS500Z & IS1500Z Series) | 5600004 (IS1500Z Series for S/N: 201262) | |
| 5600009 (IS4500Z Series) | 5600006 (IS3000ZF & IS3000ZX Series) | |
| 5600060 (IS3100Z Series) | 5600005 (IS3000ZL Series) | |
| 5600061 (IS2000Z Series for S/N: 201262) | 5600057 (IS2000Z Series) | |

Decals - Brand, Safety & Instruction

REF NO	PART NO.	QTY.	DESCRIPTION
1	5046944	1	DECAL, Fast-Vac
2	5046850	1	DECAL, Danger/Warning
3	5046851	1	DECAL, Warning-Blower
4	5046883	1	DECAL, Warning-Shield
5	7027733	1	DECAL, Ear Protection

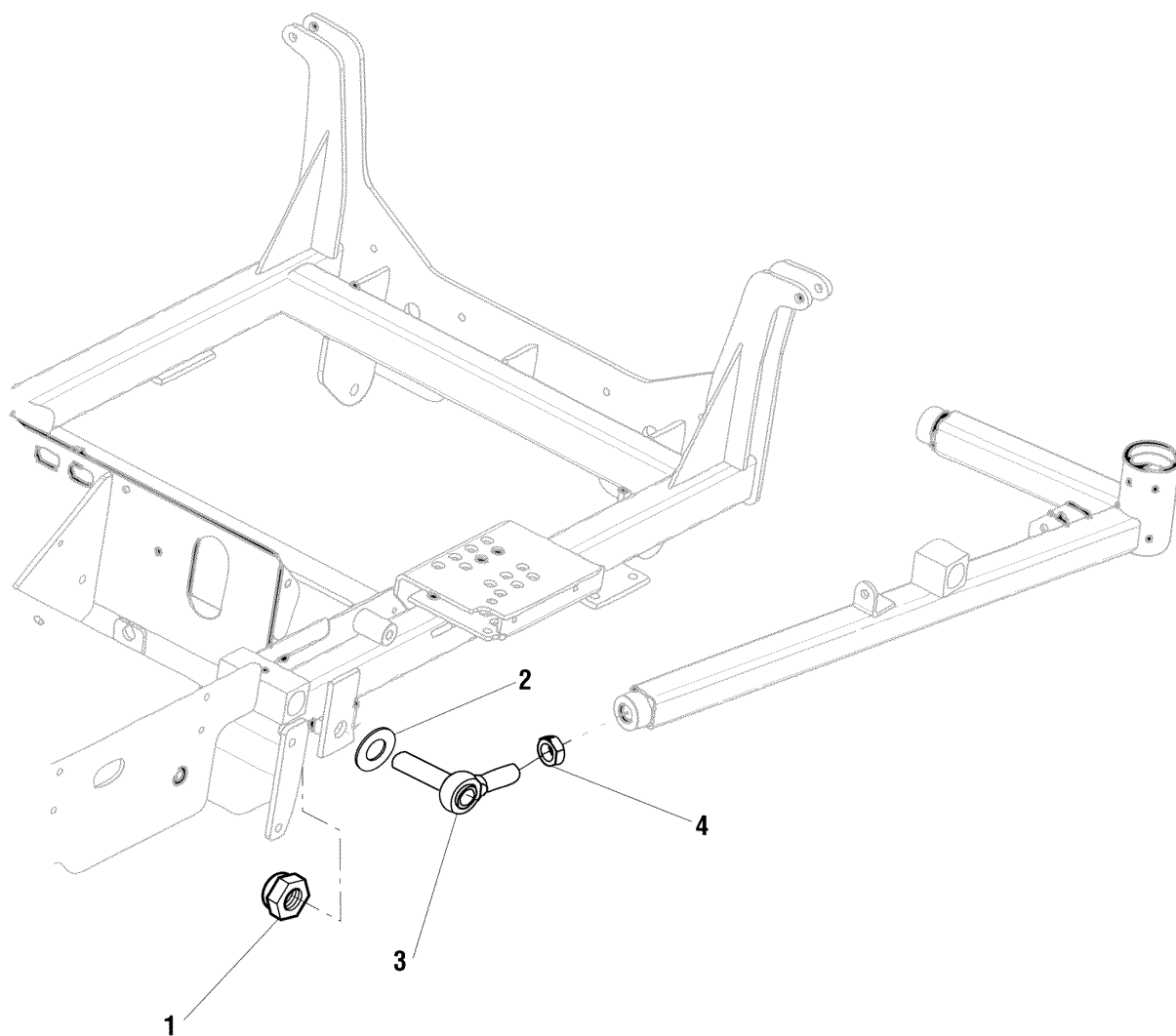
Footnotes

The above parts group applies to the following Mfg. Nos.:

5600008 (1000Z Series)	5600083 (IS3100ZBS Series)	5600003 (IS1500Z Series)
5600007 (IS1000Z Series)	5600002 (IS1500Z Series)	
5600001 (IS500Z & IS1500Z Series)	5600004 (IS1500Z Series for S/N: 201262)	
5600009 (IS4500Z Series)	5600006 (IS3000ZF & IS3000ZX Series)	
5600060 (IS3100Z Series)	5600005 (IS3000ZL Series)	
5600061 (IS2000Z Series for S/N: 201262)	5600057 (IS2000Z Series)	

Ball Joint, IS2000Z, 52" Deck

NOTE: Unless noted otherwise,
use the standard hardware torque
specification chart.



The above parts group applies to the following Mfg. Nos.:
5600061 (IS2000Z Series for S/N: 201262)

Ball Joint, IS2000Z, 52" Deck

REF NO	PART NO.	QTY.	DESCRIPTION
1	5025284	1	NUT, 3/4-16 HEX NYLON LOCK (Existing Part on Machine - Not Included in Blower Kit)
2	5025160	1	WASHER, 3/4" SAE
3	5100560	1	BALL JOINT, 3/4-16, MALE, STUD
4	5025093	1	NUT, HEX JAM, 3/4-16 (Existing Part on Machine - Not Included in Blower Kit)

Footnotes

The above parts group applies to the following Mfg. Nos.:

5600061 (IS2000Z Series for S/N: 201262)

9/24/2007



FAST-Vac Grass Collection Systems (2005 Model Year & Later)

IMPORTANT NOTE: These kits will only fit models equipped with the rubber discharge chute.

N/A = Not available.

Mower Deck Size	2-Bag System	3-Bag System
44" Ferris IS500Z & IS1500Z Series - Model #: 5900614, 5900605 & 5900640	5600001	N/A
48" Ferris IS1500Z Series - Model #: 5900615 & 5900606 Snapper Pro S150x Series - Model #: 5900686 & 5900696	5600002	5600003
52" Ferris IS1500Z Series - Model #: 5900616 & 5900607 (S/N: 2012628762 & Below) Snapper Pro S150x Series - Model #: 5900665 & 5900697 (S/N: 2012628762 & Below)	N/A	5600004
52" Ferris IS1500Z Series - Model #: 5900616 & 5900607 (S/N: 2012628763 & Above) Snapper Pro S150x Series - Model #: 5900665 & 5900697 (S/N: 2012628763 & Above)	N/A	5600148
52" Ferris IS1000Z Series (S/N: 2531 & Above)	N/A	5600007
52" Ferris IS2000Z Series - Model #: 5900624 & 5900625 (S/N: 2012628762 & Below)	N/A	5600061
52" Ferris IS2000Z Series - Model #: 5900624 & 5900625 (S/N: 2012628763 & Above)	N/A	5600150
61" Ferris 1000Z Series (S/N: 2899 & Above)	N/A	5600008
61" Ferris IS2000Z Series - Model #: 5900619 & 5901170 Snapper Pro S200x Series - Model #: 5900664, 5900692 & 5900695	N/A	5600057
61" Ferris IS3000Z & IS3000ZX Series (S/N: 3631 & Above)	N/A	5600006
61" Ferris IS3000ZL Series - Model #: 5901059	N/A	5600005
61" Ferris IS3100Z Series - Model #: 5900611, 5900612 & 5900613	N/A	5600060
61" Ferris IS4500Z Series - Model #: 5900159, 5900160, 5901180 & 5901179	N/A	5600009

See Reverse for Kit Contents

5600059
Rev. H 9/24/2007

The above parts group applies to the following Mfg. Nos.:

- | | | |
|--|--|----------------------------|
| 5600001 (IS500Z & IS1500Z Series) | 5600006 (IS3000ZF & IS3000ZX Series) | 5600083 (IS3100ZBS Series) |
| 5600002 (IS1500Z Series) | 5600005 (IS3000ZL Series) | |
| 5600003 (IS1500Z Series) | 5600009 (IS4500Z Series) | |
| 5600004 (IS1500Z Series for S/N: 201262) | 5600057 (IS2000Z Series) | |
| 5600007 (IS1000Z Series) | 5600060 (IS3100Z Series) | |
| 5600008 (1000Z Series) | 5600061 (IS2000Z Series for S/N: 201262) | |



FAST-Vac Grass Collection Systems (2005 Model Year & Later)

IMPORTANT NOTE: These kits will only fit models equipped with the rubber discharge chute.

Kit Contents:

5600001

- (1) 5900800 - FAST-Vac Blower
- (1) 5100001 - 2-Bag Collector
- (1) 5300012 - 2-Bag Mount
- (1) 5300005 - Blower Mount
- (1) 5300189 - Weight Mount
- (2) 1717627 - Weight, 50lbs.

5600002

- (1) 5900800 - FAST-Vac Blower
- (1) 5100001 - 2-Bag Collector
- (1) 5300012 - 2-Bag Mount
- (1) 5300006 - Blower Mount
- (1) 5300189 - Weight Mount
- (2) 1717627 - Weight, 50lbs.

5600003

- (1) 5900800 - FAST-Vac Blower
- (1) 5100002 - 3-Bag Collector
- (1) 5300019 - 3-Bag Mount
- (1) 5300006 - Blower Mount
- (1) 5300189 - Weight Mount
- (3) 1717627 - Weight, 50lbs.

5600004

- (1) 5900800 - FAST-Vac Blower
- (1) 5100002 - 3-Bag Collector
- (1) 5300019 - 3-Bag Mount
- (1) 5300007 - Blower Mount
- (1) 5300189 - Weight Mount
- (3) 1717627 - Weight, 50lbs.

5600005

- (1) 5900800 - FAST-Vac Blower
- (1) 5100002 - 3-Bag Collector
- (1) 5300014 - 3-Bag Mount
- (1) 5300009 - Blower Mount
- (1) 5046869 - Weight Mount
- (3) 1717627 - Weight, 50lbs.

5600006

- (1) 5900800 - FAST-Vac Blower
- (1) 5100002 - 3-Bag Collector
- (1) 5300014 - 3-Bag Mount
- (1) 5300008 - Blower Mount
- (1) 5046869 - Weight Mount
- (3) 1717627 - Weight, 50lbs.

5600007

- (1) 5900800 - FAST-Vac Blower
- (1) 5100002 - 3-Bag Collector
- (1) 5300022 - 3-Bag Mount
- (1) 5300016 - Blower Mount
- (1) 5047609 - Weight Mount
- (2) 1717627 - Weight, 50lbs.

5600008

- (1) 5900800 - FAST-Vac Blower
- (1) 5100002 - 3-Bag Collector
- (1) 5300022 - 3-Bag Mount
- (1) 5300020 - Blower Mount
- (1) 5061134 - Weight Mount
- (3) 1717627 - Weight, 50lbs.

5600009

- (1) 5900800 - FAST-Vac Blower
- (1) 5100002 - 3-Bag Collector
- (1) 5300019 - 3-Bag Mount
- (1) 5300010 - Blower Mount
- (1) 5300189 - Weight Mount
- (3) 1717627 - Weight, 50lbs.
- (1) 5600019 - Bumper Kit

5600057

- (1) 5900800 - FAST-Vac Blower
- (1) 5100002 - 3-Bag Collector
- (1) 5300019 - 3-Bag Mount
- (1) 5300188 - Blower Mount
- (1) 5300189 - Weight Mount
- (3) 1717627 - Weight, 50lbs.

5600060

- (1) 5900800 - FAST-Vac Blower
- (1) 5100002 - 3-Bag Collector
- (1) 5300117 - 3-Bag Mount
- (1) 5300009 - Blower Mount
- (1) 5046869 - Weight Mount
- (3) 1717627 - Weight, 50lbs.

5600061

- (1) 5900800 - FAST-Vac Blower
- (1) 5100002 - 3-Bag Collector
- (1) 5300019 - 3-Bag Mount
- (1) 5300223 - Blower Mount
- (1) 5300189 - Weight Mount
- (3) 1717627 - Weight, 50lbs.

5600059

Rev. H 9/24/2007

The above parts group applies to the following Mfg. Nos.:

5600001 (IS500Z & IS1500Z Series)

5600002 (IS1500Z Series)

5600057 (IS2000Z Series)

5600060 (IS3100Z Series)

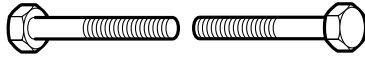
5600061 (IS2000Z Series for S/N: 201262)

5600083 (IS3100ZBS Series)

Hardware Identification & Torque Specifications

Common Hardware Types

Hex Head Capscrew



Washer



Carriage Bolt



Lockwasher



Hex Nut

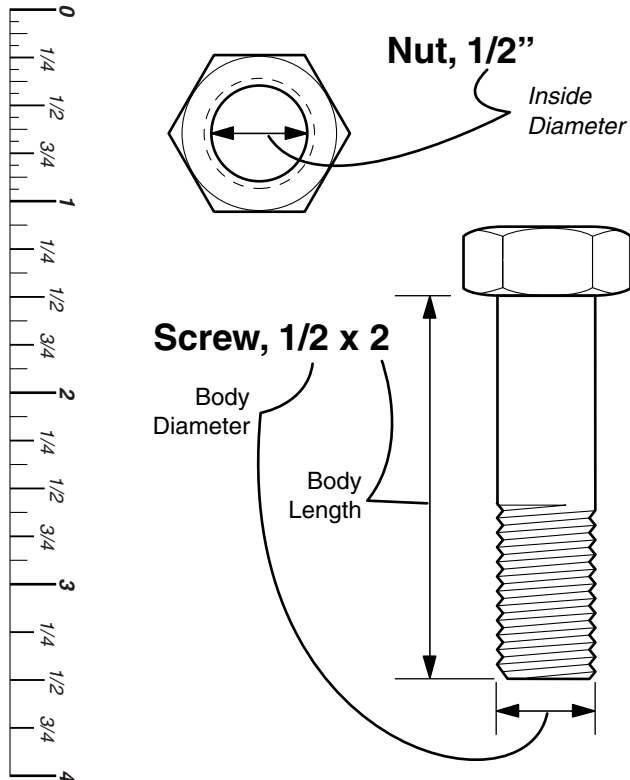


Standard Hardware Sizing

When a washer or nut is identified as **1/2"**, this is the *Nominal size*, meaning the *inside diameter* is 1/2 inch; if a second number is present it represents the *threads per inch*

When bolt or capscrew is identified as **1/2 - 16 x 2"**, this means the *Nominal size*, or *body diameter* is 1/2 inch; the second number represents the *threads per inch* (16 in this example, and the final number is the *body length* of the bolt or screw (in this example 2 inches long).

The guides and ruler furnished below are designed to help you select the appropriate hardware and tools.



Torque Specification Chart

FOR STANDARD MACHINE HARDWARE (Tolerance $\pm 20\%$)

Hardware Grade	No Marks SAE Grade 2		SAE Grade 5		SAE Grade 8	
	in/lbs ft/lbs	Nm.	in/lbs ft/lbs	Nm.	in/lbs ft/lbs	Nm.
8-32	19	2.1	30	3.4	41	4.6
8-36	20	2.3	31	3.5	43	4.9
10-24	27	3.1	43	4.9	60	6.8
10-32	31	3.5	49	5.5	68	7.7
1/4-20	66	7.6	8	10.9	12	16.3
1/4-28	76	8.6	10	13.6	14	19.0
5/16-18	11	15.0	17	23.1	25	34.0
5/16-24	12	16.3	19	25.8	27	34.0
3/8-16	20	27.2	30	40.8	45	61.2
3/8-24	23	31.3	35	47.6	50	68.0
7/16-14	30	40.8	50	68.0	70	95.2
7/16-20	35	47.6	55	74.8	80	108.8
1/2-13	50	68.0	75	102.0	110	149.6
1/2-20	55	74.8	90	122.4	120	163.2
9/16-12	65	88.4	110	149.6	150	204.0
9/16-18	75	102.0	120	163.2	170	231.2
5/8-11	90	122.4	150	204.0	220	299.2
5/8-18	100	136	180	244.8	240	326.4
3/4-10	160	217.6	260	353.6	386	525.0
3/4-16	180	244.8	300	408.0	420	571.2
7/8-9	140	190.4	400	544.0	600	816.0
7/8-14	155	210.8	440	598.4	660	897.6
1-8	220	299.2	580	788.8	900	1,244.0
1-12	240	326.4	640	870.4	1,000	1,360.0

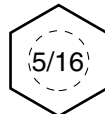
NOTES

- These torque values are to be used for all hardware excluding: locknuts, self-tapping screws, thread forming screws, sheet metal screws and socket head setscrews.
- Recommended seating torque values for locknuts:
 - for prevailing torque locknuts - use 65% of grade 5 torques.
 - for flange whizlock nuts and screws - use 135% of grade 5 torques.
- Unless otherwise noted on assembly drawings, all torque values must meet this specification.

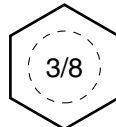
Wrench & Fastener Size Guide



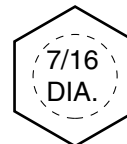
1/4" Bolt or Nut
Wrench—7/16"



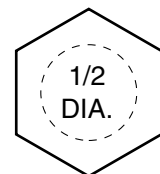
5/16" Bolt or Nut
Wrench—1/2"



3/8" Bolt or Nut
Wrench—9/16"



7/16" Bolt or Nut
Wrench (Bolt)—5/8"
Wrench (Nut)—11/16"



1/2" Bolt or Nut
Wrench—3/4"

Parts Manual Fast-Vac

Grass Collection Systems

Fits 2005 & Above Models with Rubber Discharge Chute

IT IS THE POLICY OF FERRIS INDUSTRIES TO IMPROVE ITS PRODUCTS WHENEVER IT IS POSSIBLE AND PRACTICAL TO DO SO. WE RESERVE THE RIGHT TO MAKE CHANGES OR ADD IMPROVEMENTS AT ANY TIME WITHOUT INCURRING ANY OBLIGATION TO MAKE SUCH CHANGES ON PRODUCTS MANUFACTURED

Briggs and Stratton Yard Power Products Group

5375 North Main Street
Munnsville, NY 13409 USA
800-933-6175

www.ferrisindustries.com

© Copyright 2007 Briggs and Stratton Corporation
All Rights Reserved. Printed In USA.