



Parts Manual Fast-Vac

Grass Collection Systems

Fits 2004 Models & Prior with Steel Discharge Chute



Models:	Description:
5600021	48" 3-Bag System (1000Z Series)
5600022	48" 3-Bag System (IS1000Z Series)
5600023	52" 3-Bag System (1000Z Series)
5600024	52" 3-Bag System (IS1000Z Series)
5600025	61" 3-Bag System (1000Z, 23HP Model)
5600027	61" 3-Bag System (IS3000Z, 23HP S/N: 101-425 & IS3000Z, 25HP S/N: 101-1525)
5600026	61" 3-Bag System (IS3000Z, 27HP & IS3000Z, 25HP S/N: 1731 & above)
5600030	61" 3-Bag System (1000Z, 27HP Model)

Ferris Industries

5375 North Main Street
Munnsville, NY 13409 USA
800-933-6175

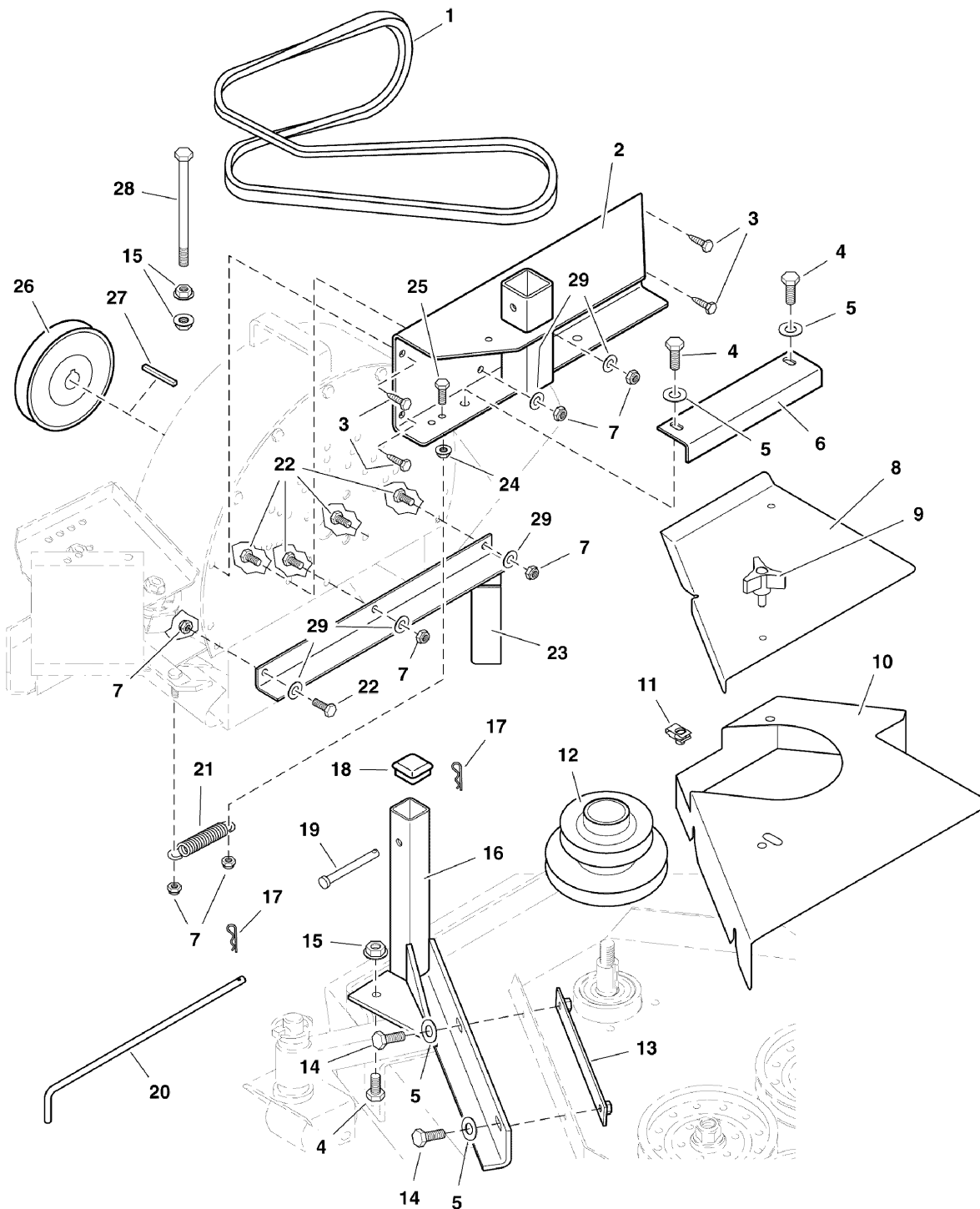
5100061
Revision 01
Rev. Date: 6/2006
TP 400-7269-01-AT-F

MODEL COMPONENTS	PAGE
61" Blower Mount & Drive Group	4
48" & 52" Blower Mount & Drive Group	6
Blower Housing, Impeller, Guard & Idler Group	8
3-Bag Catcher & Cover Group	10
3-Bag Mount - 1000Z & IS1000Z	12
3-Bag Mount - IS3000Z	14
Weight Mount Group - 1000Z	16
Weight Mount Group - IS3000Z	18
Weight Mount Group - IS1000Z	20
Decals - Brand, Safety & Instruction	22
Model Reference Sheet - Models w/Steel Discharge Chute	24
Torque Specification Chart	Inside Back Cover

61" Blower Mount & Drive Group

2696bm0

NOTE: Unless noted otherwise,
use the standard hardware torque
specification chart.



The above parts group applies to the following Mfg. Nos.:

5600030 (1000Z, 27HP Model)

5600025 (1000Z, 23HP Model)

5600026 (IS3000Z, 27HP & IS3000Z, 25H

5600027 (IS3000Z, 23HP S/N: 101-425 & I

61" Blower Mount & Drive Group

REF NO.	PART NO.	QTY.	DESCRIPTION
1	5022844	1	BELT (For 31207-61A Blower)
1	5023107	1	BELT (For 31207-61B Blower)
2	5047520A	1	BLOWER MOUNT (31207-61A)
2	5048271A	1	BLOWER MOUNT (31207-61B)
3	5025059X6	4	BOLT, Self-Tapping, 5/16-18 x 3/4
4	5025013X8	3	BOLT, 3/8-16 x 1
5	5025156	4	WASHER, 3/8" SAE
6	5046814A	1	BOTTOM BRACE
7	5025057	7	NUT, 5/16-18 Hex Nylon Lock
8	5046872A	1	BELT SHIELD
9	5022319	2	KNOB
10	5047515A	1	DECK GUARD (31207-61A & 31207-61B)
11	5022308	2	BODY CLIP, 5/16-18
12	5046702	1	SPINDLE PULLEY
13	5046844A	1	INSIDE SUPPORT
14	5025013X10	2	BOLT, 3/8-16 x 1-1/4
15	5025128	3	NUT, 3/8-16 Hex Serrated Flange
16	5046842A	1	BLOWER DECK SUPPORT
17	5025210	2	HAIRPIN CLIP
18	5022848	1	CAP
19	5025214X32	1	CLEVIS PIN, 3/8 x 4
20	5046773	1	QUICK CONNECT ROD
21	5020807	1	SPRING, Extension
22	5025011X6	5	BOLT, 5/16-18 x 3/4
23	5047517A	1	BOTTOM ADAPTER (31207-61A)
23	5048272A	1	BOTTOM ADAPTER (31207-61B)
24	5025127	1	NUT, 5/16-18 Hex Small Serrated Flange
25	5025011X10	1	BOLT, 5/16-18 x 1-1/4
26	5046808	1	BLOWER DRIVE PULLEY
27	5022726	1	KEY, 1/4 SQ. X 1-1/2
28	5025013X48	1	BOLT, 3/8-16 x 6
29	5025155	5	WASHER, 5/16" SAE

Footnotes

The above parts group applies to the following Mfg. Nos.:

5600030 (1000Z, 27HP Model)

5600025 (1000Z, 23HP Model)

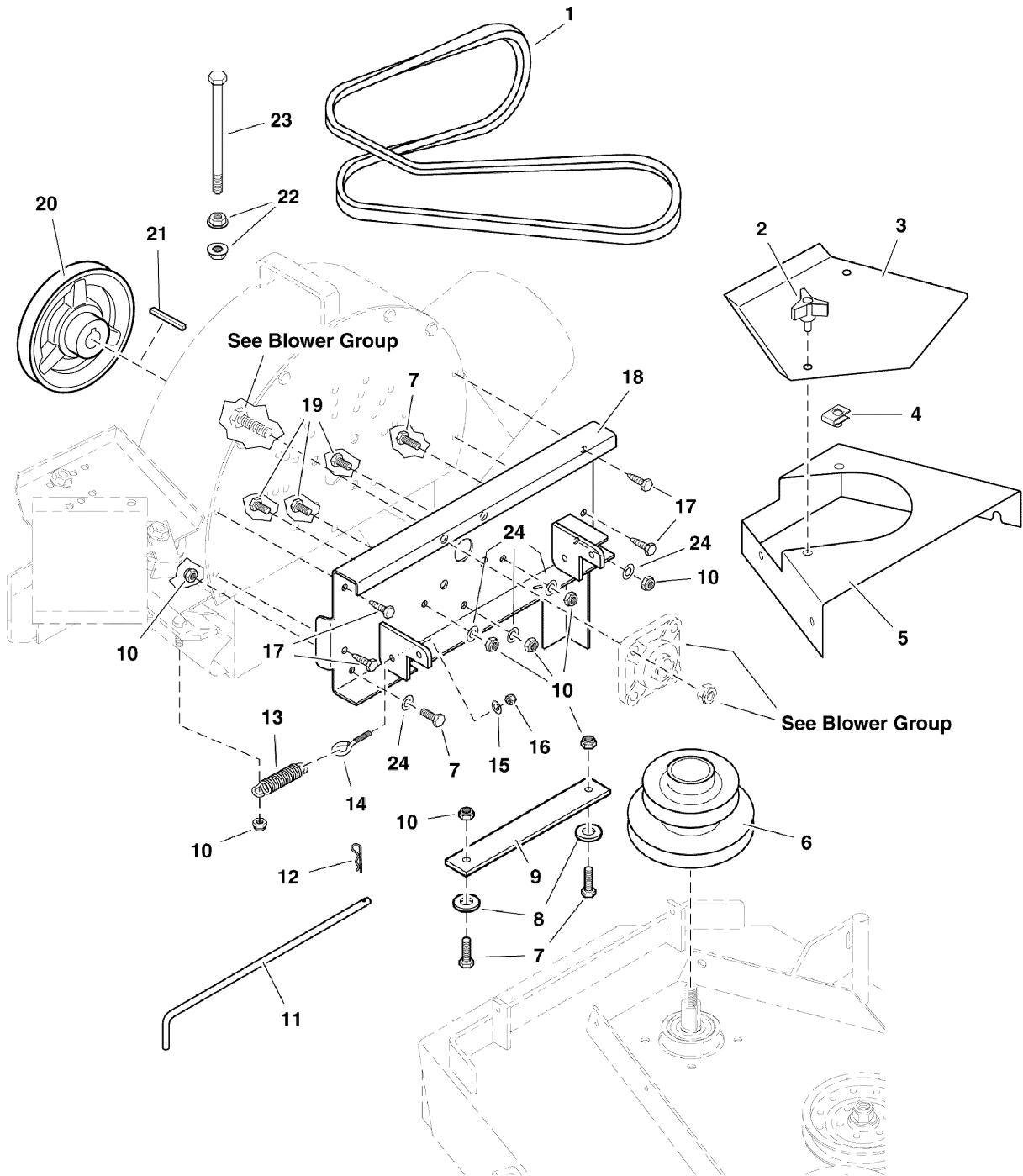
5600026 (IS3000Z, 27HP & IS3000Z, 25H

5600027 (IS3000Z, 23HP S/N: 101-425 & I

48" & 52" Blower Mount & Drive Group

2698bm0

NOTE: Unless noted otherwise,
use the standard hardware torque
specification chart.



The above parts group applies to the following Mfg. Nos.:

- 5600021 (1000Z Series)
- 5600024 (IS1000Z Series)
- 5600023 (1000Z Series)
- 5600022 (IS1000Z Series)

48" & 52" Blower Mount & Drive Group

REF NO.	PART NO.	QTY.	DESCRIPTION
1	5022844	1	BELT (48" deck)
1	5021006	1	BELT (52" Deck)
2	5022319	2	KNOB
3	5046725A	1	BELT SHIELD (31207, All / 31207-48, S/N: 101-160 / 31207-52, S/N: 101-140)
3	5047257A	1	BELT SHIELD (31207-48, S/N: 161 & above / 31207-52, S/N: 141 & above)
4	5022308	2	BODY CLIP, 5/16-18
5	5046724A	1	DECK GUARD (31207, All / 31207-48, S/N: 101-160 / 31207-52, S/N: 101-140)
5	5047256A	1	DECK GUARD (31207-48, S/N: 161 & above / 31207-52, S/N: 141 & above)
6	5046762	1	SPINDLE PULLEY, 48" (bright zinc finish)
6	5023176	1	SPINDLE PULLEY, 48" (black paint finish)
6	5046763	1	SPINDLE PULLEY, 52" (bright zinc finish)
6	5023177	1	SPINDLE PULLEY, 52" (black paint finish)
7	5025011X8	4	BOLT, 5/16-18 x 1
8	5025341	2	WASHER, 5/16 x 1
9	5046788A	1	QUICK CONNECT BAR
10	5025057	8	NUT, 5/16-18 Hex Nylon Lock
11	5046773	1	QUICK CONNECT ROD
12	5025210	1	HAIRPIN CLIP
13	5020807	1	SPRING, Extension
14	5022205	1	EYEBOLT
15	5025154	1	WASHER, 1/4" SAE
16	5025095	1	NUT, 1/4-20 Hex Nylon Lock
17	5025059X6	4	BOLT, Self-Tapping, 5/16-18 x 3/4
18	5046733A	1	48" BLOWER MOUNT
18	5046875A	1	52" BLOWER MOUNT
19	5025011X6	3	BOLT, 5/16-18 x 3/4
20	5046806	1	48" BLOWER DRIVE PULLEY
20	5046807	1	52" BLOWER DRIVE PULLEY
21	5022726	1	KEY, 1/4 SQ. X 1-1/2
22	5025128	2	NUT, 3/8-16 Hex Serrated Flange
23	5025013X48	1	BOLT, 3/8-16 x 6
24	5025155	5	WASHER, 5/16" SAE

Footnotes

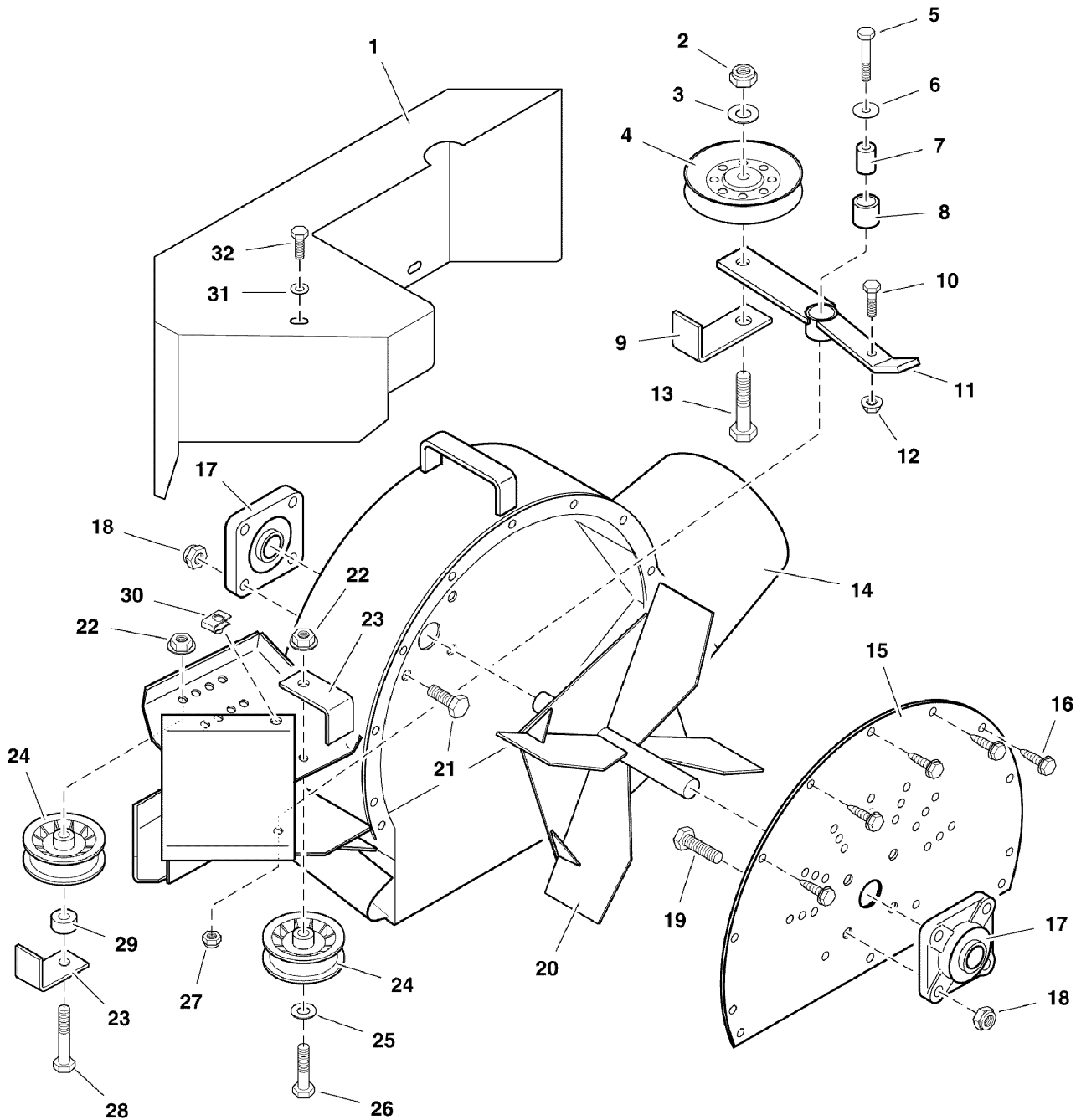
The above parts group applies to the following Mfg. Nos.:

5600021 (1000Z Series)
5600024 (IS1000Z Series)
5600023 (1000Z Series)
5600022 (IS1000Z Series)

Blower Housing, Impeller, Guard & Idler Group

269big0

NOTE: Unless noted otherwise,
use the standard hardware torque
specification chart.



The above parts group applies to the following Mfg. Nos.:

- | | |
|--|-----------------------------|
| 5600024 (IS1000Z Series) | 5600030 (1000Z, 27HP Model) |
| 5600023 (1000Z Series) | 5600022 (IS1000Z Series) |
| 5600025 (1000Z, 23HP Model) | |
| 5600027 (IS3000Z, 23HP S/N: 101-425 & I) | |
| 5600026 (IS3000Z, 27HP & IS3000Z, 25H) | |
| 5600021 (1000Z Series) | |

Blower Housing, Impeller, Guard & Idler Group

REF NO.	PART NO.	QTY.	DESCRIPTION
1	5046782A	1	BELT GUARD
2	5025056	1	NUT, 1/2-13 Hex Nylon Lock
3	5025158	1	WASHER, 1/2" SAE
4	5021097	1	PULLEY, V-Idler
5	5025011X14	1	BOLT, 5/16-18 x 1-3/4
6	5025164	1	WASHER, 5/16" Fender
7	5042134	1	SPACER, .32 x .75 x 1.06
8	5020876B	1	BUSHING, Brass
9	5046824A	1	BELT KEEP
10	5025011X10	1	BOLT, 5/16-18 x 1-1/4
11	5046827A	1	IDLER ARM (31207, All / 31207-48, S/N: 101-160 / 31207-52, S/N: 101-140 / 31207-61, All)
11	5047253A	1	IDLER ARM (31207-48, S/N: 161 & above / 31207-52, S/N: 141 & above / 31207-61A, All / 31207-61B, All)
12	5025127	1	NUT, 5/16-18 Hex Small Serrated Flange
13	5025017X18	1	BOLT, 1/2-13 x 2-1/4
14	5046781A	1	BLOWER HOUSING
15	5046853A	1	BACK PLATE
16	5025059X6	5	BOLT, Self-Tapping, 5/16-18 x 3/4
17	5022832	2	BEARING
18	5025125	8	NUT, 7/16-14 Hex Nylon Lock
19	5025015X12	4	BOLT, 7/16-14 x 1-1/2
20	5046854A	1	IMPELLER
21	5025015X10	4	BOLT, 7/16-14 x 1-1/4
22	5025128	2	NUT, 3/8-16 Hex Serrated Flange
23	5046813A	2	BELT KEEP
24	5043613	2	IDLER PULLEY ASSEMBLY
25	5025156	1	WASHER, 3/8" SAE
26	5025013X14	1	BOLT, 3/8-16 x 1-3/4
27	5025057	1	NUT, 5/16-18 Hex Nylon Lock
28	5025013X18	1	BOLT, 3/8-16 x 2-1/4
29	5046860	1	SPACER, .39 x 1.00 x .50
30	5022308	3	BODY CLIP, 5/16-18
31	5025155	3	WASHER, 5/16" SAE
32	5025011X8	3	BOLT, 5/16-18 x 1

Footnotes

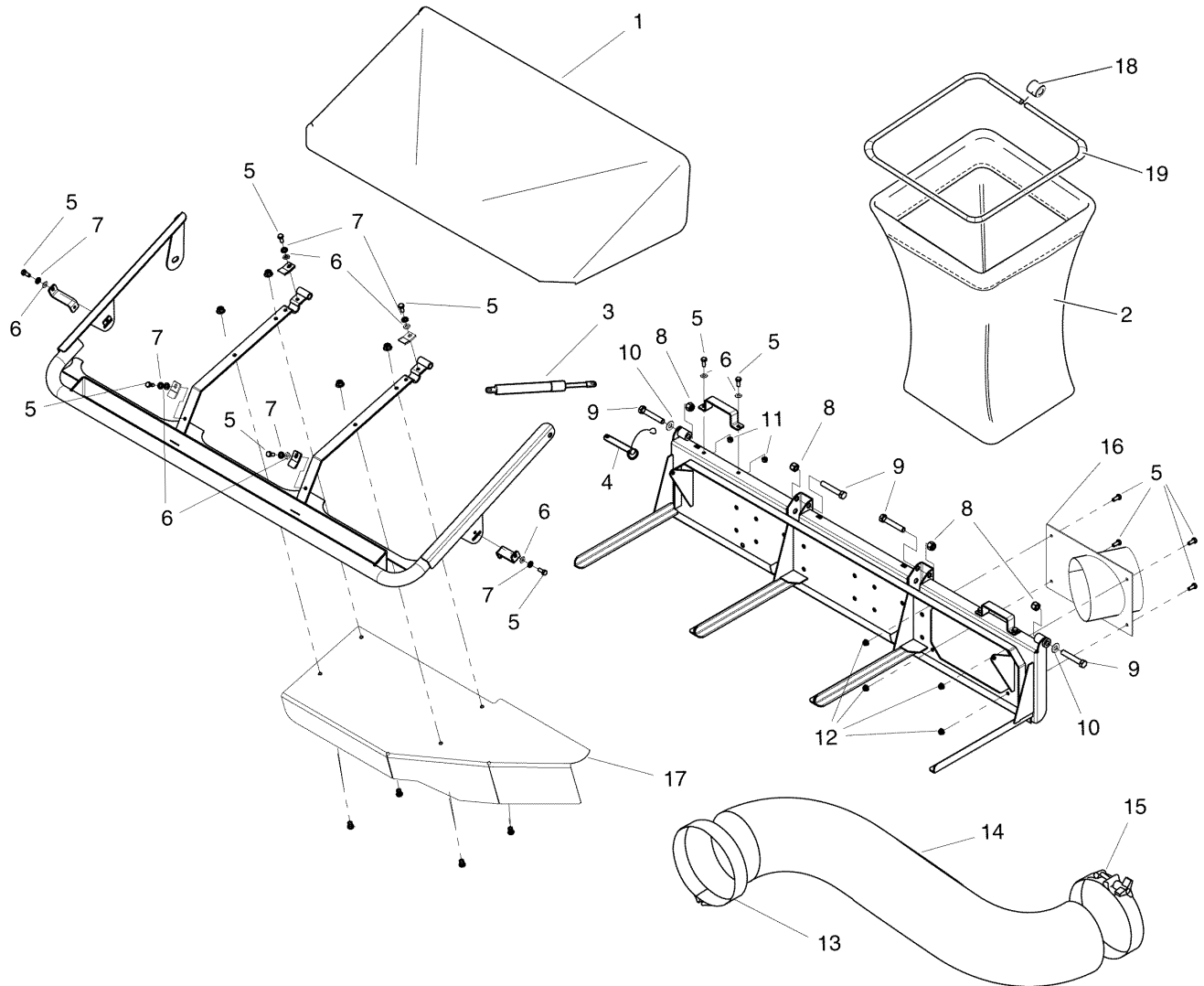
The above parts group applies to the following Mfg. Nos.:

5600024 (IS1000Z Series) 5600030 (1000Z, 27HP Model)
5600023 (1000Z Series) 5600022 (IS1000Z Series)
5600025 (1000Z, 23HP Model)
5600027 (IS3000Z, 23HP S/N: 101-425 & I
5600026 (IS3000Z, 27HP & IS3000Z, 25H
5600021 (1000Z Series)

3-Bag Catcher & Cover Group

269bcc1

NOTE: Unless noted otherwise,
use the standard hardware torque
specification chart.



The above parts group applies to the following Mfg. Nos.:

- | | |
|-----------------------------|--|
| 5600022 (IS1000Z Series) | 5600026 (IS3000Z, 27HP & IS3000Z, 25H) |
| 5600021 (1000Z Series) | 5600027 (IS3000Z, 23HP S/N: 101-425 & I) |
| 5600023 (1000Z Series) | |
| 5600024 (IS1000Z Series) | |
| 5600025 (1000Z, 23HP Model) | |
| 5600030 (1000Z, 27HP Model) | |

3-Bag Catcher & Cover Group

REF NO.	PART NO.	QTY.	DESCRIPTION
1	5100154	1	3 BAG AIR DOME
2	5100150	3	CATCHER BAG W/ HANDLE
3	5100152	2	GAS CYLINDER
4	5100151	1	DETENT PIN W/ LANYARD
5	5025011X6	14	BOLT, 5/16-18 X 3/4" GRD5
6	5025155	10	WASHER, 5/16" SAE
7	5025170	6	WASHER, 5/16" LOCK
8	5025056	4	NUT, 1/2-13 HEX NYLON LOCK
9	5025018X24	4	BOLT, 1/2-20 X 3" GD5
10	5025158	2	WASHER, 1/2" SAE
11	5025057	4	NUT 5/16-18 HEX NYLON LOCK
12	5025392	4	NUT 5/16-18 HEX NYLOCK FLANGE
13	5022875	1	HOSE CLAMP
14	5022833	1	HOSE
15	5022876	1	HOSE CLAMP
16	5400145A	1	WELD, INLET BLOWER
17	5400197A	1	BAFFLE
18	5100730	3	BAG FRAME CONNECTOR, PLASTIC
19	5100729	3	BAG FRAME

Footnotes

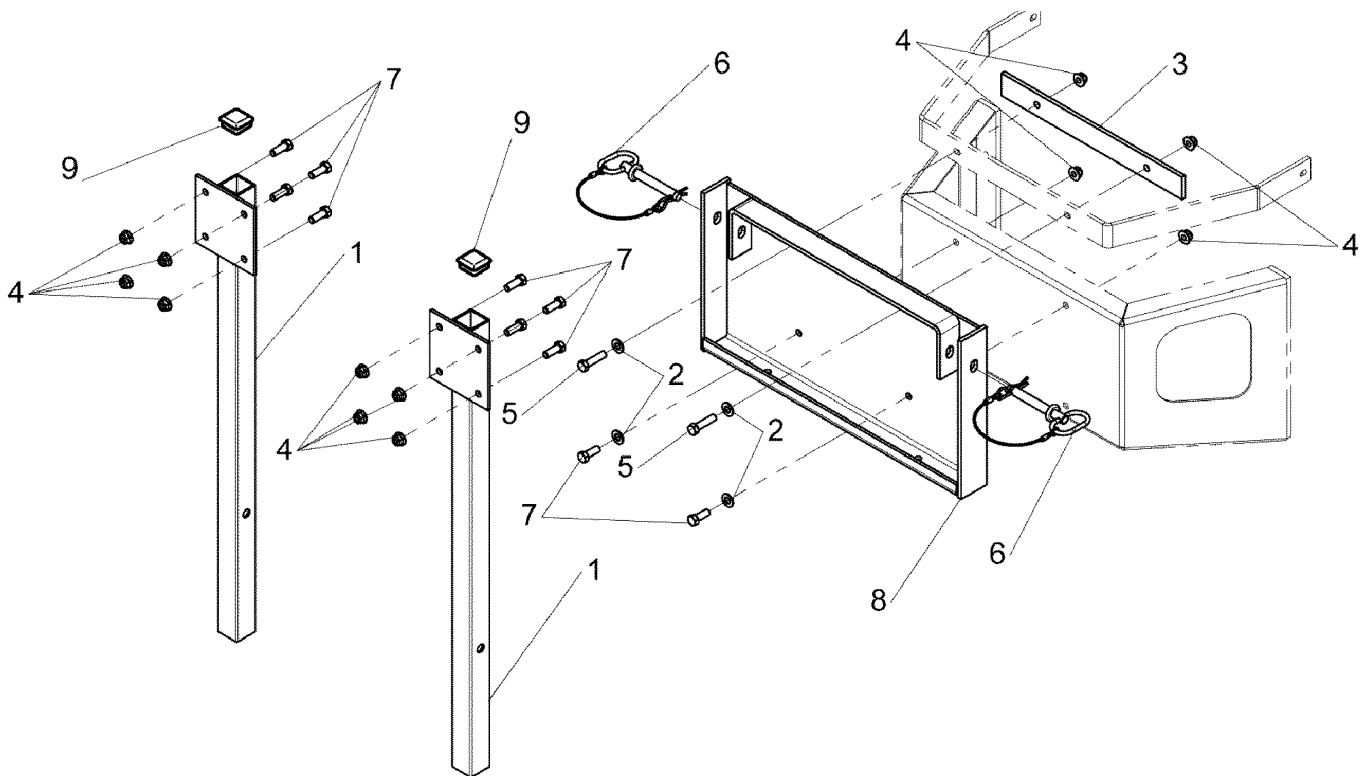
The above parts group applies to the following Mfg. Nos.:

5600022 (IS1000Z Series) 5600026 (IS3000Z, 27HP & IS3000Z, 25H
5600021 (1000Z Series) 5600027 (IS3000Z, 23HP S/N: 101-425 & I
5600023 (1000Z Series)
5600024 (IS1000Z Series)
5600025 (1000Z, 23HP Model)
5600030 (1000Z, 27HP Model)

3-Bag Mount - 1000Z & IS1000Z

269bmg1

NOTE: Unless noted otherwise,
use the standard hardware torque
specification chart.



The above parts group applies to the following Mfg. Nos.:

5600030 (1000Z, 27HP Model)

5600023 (1000Z Series)

5600022 (IS1000Z Series)

5600025 (1000Z, 23HP Model)

5600021 (1000Z Series)

5600024 (IS1000Z Series)

3-Bag Mount - 1000Z & IS1000Z

REF NO.	PART NO.	QTY.	DESCRIPTION
1	5400043A	2	WELD, MOUNT, POST - BLK
2	5025156	2	WASHER, 3/8" SAE (2 washers removed from screen)
3	5400226A	1	BAR, BAGGER SUPPORT, BLACK.
4	5025394	12	NUT, 3/8-16 HEX NYLOCK FLANGE
5	5025013X12	2	BOLT, 3/8-16 X 1-1/2" GD5 YZ
6	5100013	2	PIN, HITCH, .50 X 3.25 W/ LAY
7	5025013X8	8	BOLT, 3/8-16 X 1" GD5 YZ (2 bolts removed from screen)
8	5400221A	1	WELD, BAGR MNT-1000/IS1000 BLK
9	5022848	2	CAP, PLASTIC, 1-1/2" X 1-1/2"

Footnotes

The above parts group applies to the following Mfg. Nos.:

5600030 (1000Z, 27HP Model)

5600023 (1000Z Series)

5600022 (IS1000Z Series)

5600025 (1000Z, 23HP Model)

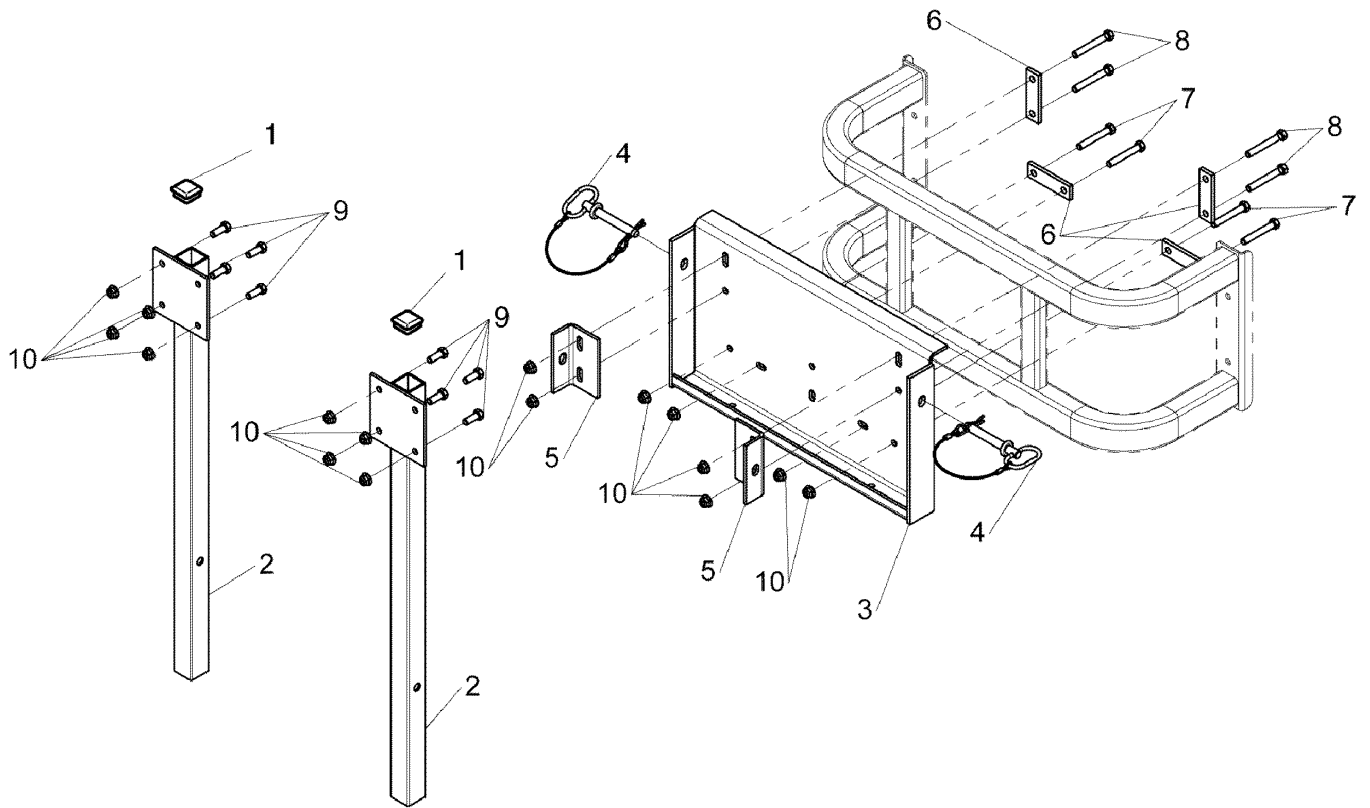
5600021 (1000Z Series)

5600024 (IS1000Z Series)

3-Bag Mount - IS3000Z

269bmg2

NOTE: Unless noted otherwise,
use the standard hardware torque
specification chart.



The above parts group applies to the following Mfg. Nos.:

5600026 (IS3000Z, 27HP & IS3000Z, 25H)
5600027 (IS3000Z, 23HP S/N: 101-425 & I)

3-Bag Mount - IS3000Z

REF NO.	PART NO.	QTY.	DESCRIPTION
1	5022848	2	CAP, PLASTIC, 1-1/2" X 1-1/2
2	5400043A	2	WELD, MOUNT, POST - BLK
3	5400149A	1	WELD, BAGGER MNT, 1500/4500-BLK
4	5100013	2	PIN, HITCH, .50 X 3.25 W/ LAY
5	5400041A	2	MOUNT, TAB, BLACK
6	5046992A	4	CLAMP, BAR
7	5025013X20	4	BOLT, 3/8-16 X 2-1/2" GD5 YZ
8	5025013X22	4	BOLT, 3/8-16 X 2-3/4" GD5 YZ
9	5025013X8	8	BOLT, 3/8-16 X 1" GD5 YZ
10	5025394	16	NUT, 3/8-16 HEX NYLOCK FLANGE

Footnotes

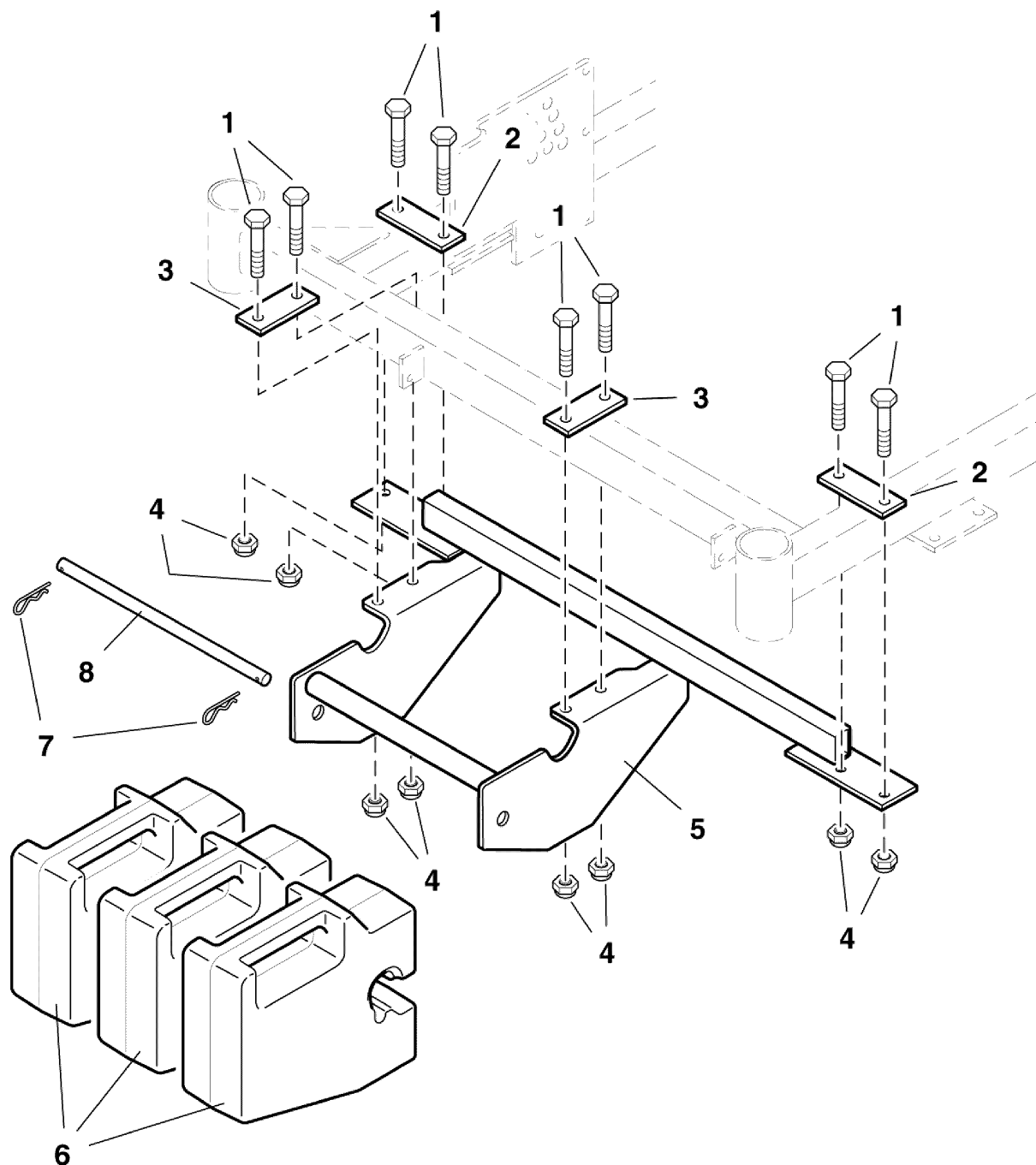
The above parts group applies to the following Mfg. Nos.:

5600026 (IS3000Z, 27HP & IS3000Z, 25H)
5600027 (IS3000Z, 23HP S/N: 101-425 & I)

Weight Mount Group - 1000Z

NOTE: Unless noted otherwise,
use the standard hardware torque
specification chart.

269b3w0



The above parts group applies to the following Mfg. Nos.:

- 5600023 (1000Z Series)
- 5600030 (1000Z, 27HP Model)
- 5600021 (1000Z Series)
- 5600025 (1000Z, 23HP Model)

Weight Mount Group - 1000Z

REF NO.	PART NO.	QTY.	DESCRIPTION
1	5025013X24	8	BOLT, 3/8-16 X 3" GD5 YZ
2	5047510A	2	BAR CLAMP, SIDE TUBE
3	5046715A	2	PLATE, BRACE-LOWER
4	5025096	8	NUT, 3/8-16 HEX NYLON LOCK
5	5049770A	1	WEIGHT MOUNT WELDMENT, 3-BAG
6	1717627	3	WEIGHT, 50lbs.
7	5025210	2	PIN, HAIR, .0915 X 1-7/8
8	5047512	1	ROD, WEIGHT RETAINING

Footnotes

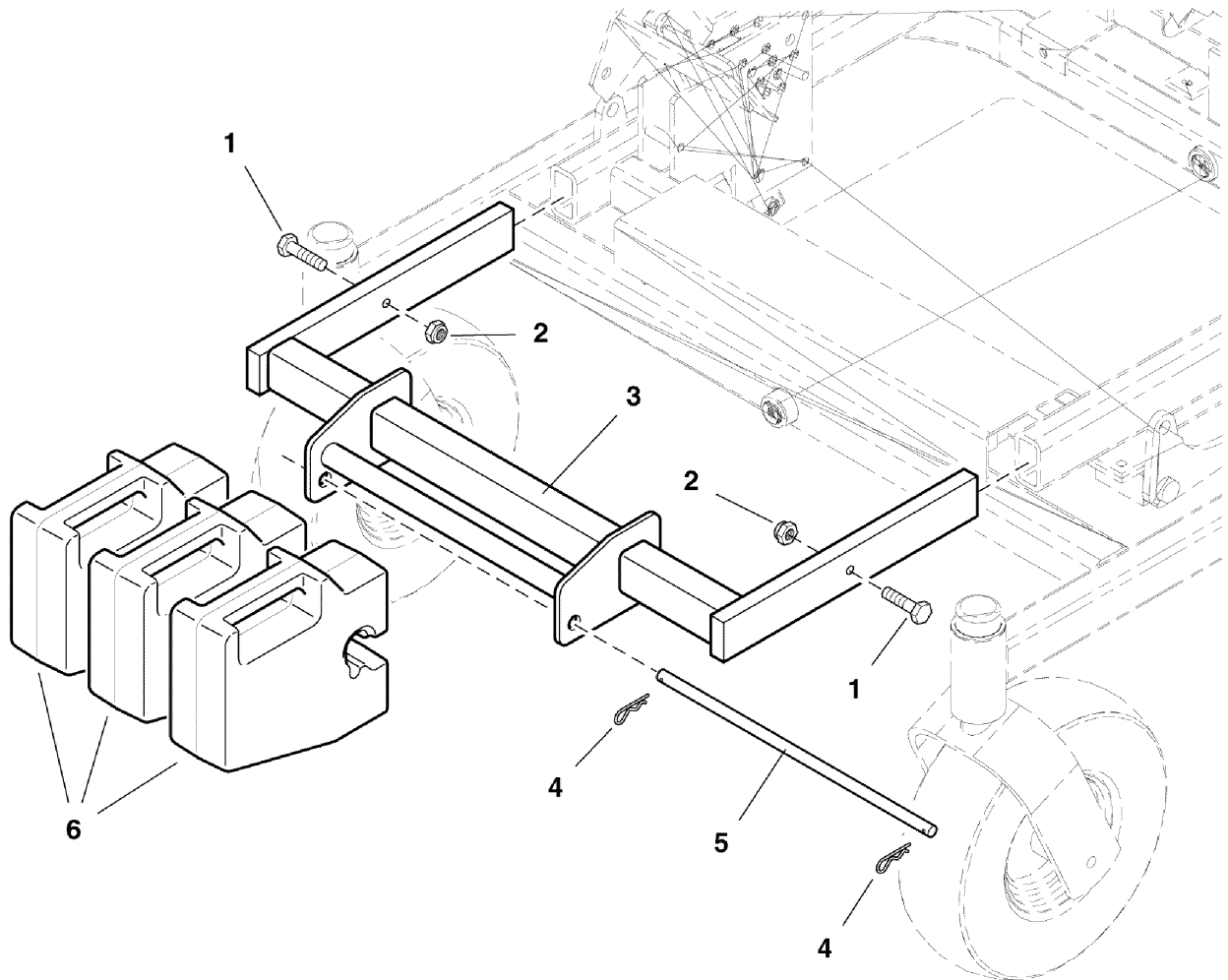
The above parts group applies to the following Mfg. Nos.:

5600023 (1000Z Series)
5600030 (1000Z, 27HP Model)
5600021 (1000Z Series)
5600025 (1000Z, 23HP Model)

Weight Mount Group - IS3000Z

269bsw0

NOTE: Unless noted otherwise,
use the standard hardware torque
specification chart.



The above parts group applies to the following Mfg. Nos.:

5600027 (IS3000Z, 23HP S/N: 101-425 & I

5600026 (IS3000Z, 27HP & IS3000Z, 25H

Weight Mount Group - IS3000Z

REF NO.	PART NO.	QTY.	DESCRIPTION
1	5025013X16	2	BOLT, 3/8-16 X 2" GD5 YZ
2	5025096	2	NUT, 3/8-16 HEX NYLON LOCK
3	5046169A	1	3-BAG WEIGHT RACK WELDMENT
4	5025210	2	PIN, HAIR, .0915 X 1-7/8
5	5046174A	1	ROD, WEIGHT RETAINER
6	1717627	3	WEIGHT, 50lbs.

Footnotes

The above parts group applies to the following Mfg. Nos.:

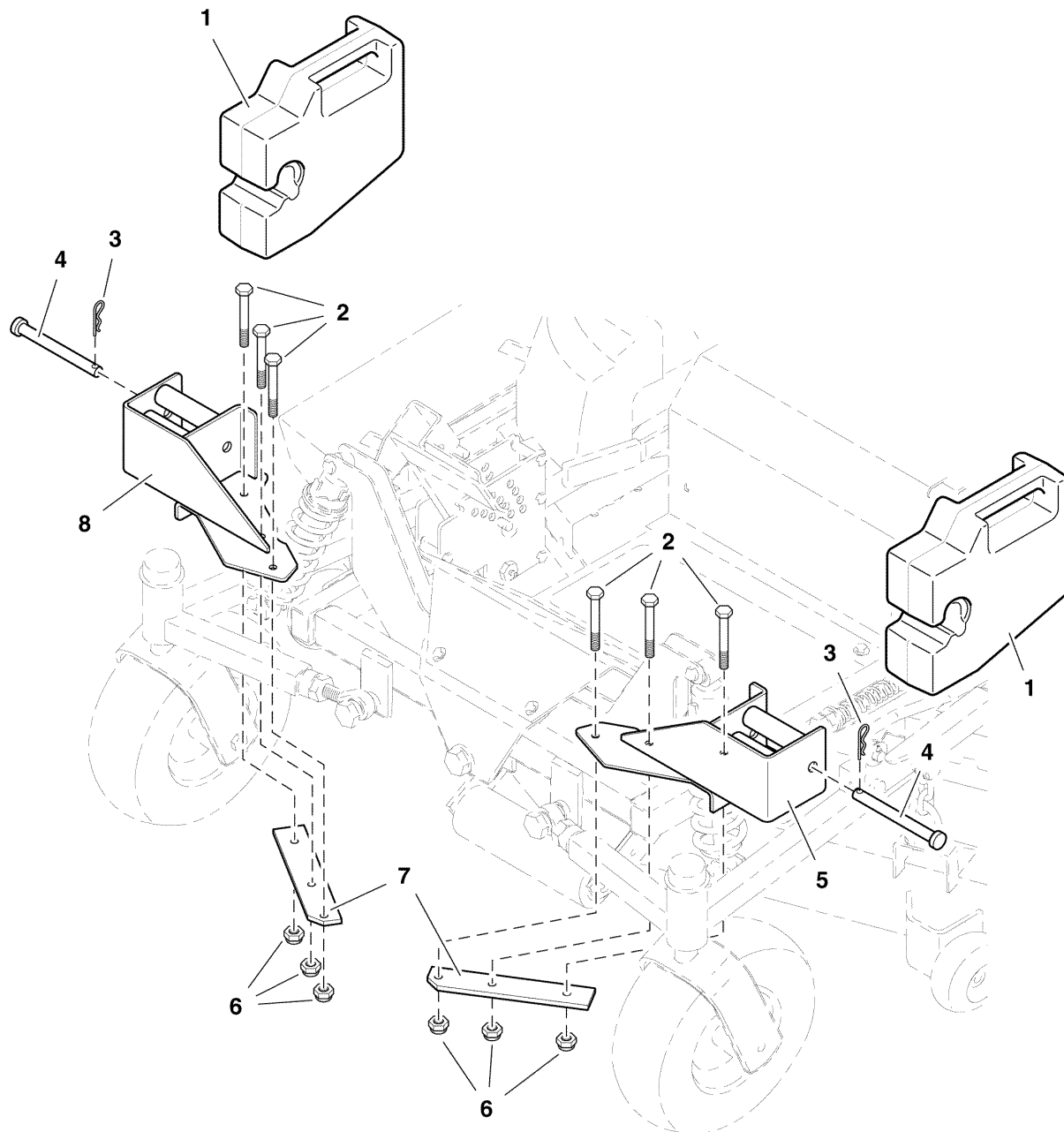
5600027 (IS3000Z, 23HP S/N: 101-425 & I

5600026 (IS3000Z, 27HP & IS3000Z, 25H

Weight Mount Group - IS1000Z

NOTE: Unless noted otherwise,
use the standard hardware torque
specification chart.

269wtm0



The above parts group applies to the following Mfg. Nos.:

5600022 (IS1000Z Series)

5600024 (IS1000Z Series)

Weight Mount Group - IS1000Z

REF NO.	PART NO.	QTY.	DESCRIPTION
1	1717627	2	WEIGHT, 50lbs.
2	5025011X20	6	BOLT, 5/16-18 X 2-1/2" GD5 YZ
3	5025210	2	PIN, HAIR, .0915 X 1-7/8
4	5022877	2	PIN,CLEVIS, 1/2" X 4 1/2",PLTD
5	5047241A	1	WEIGHT MOUNT BRACKET W'MENT-LH
6	5025057	6	NUT, 5/16-18 HEX NYLON LOCK
7	5047234A	2	CLAMP, BAR
8	5047242A	1	WEIGHT MOUNT BRACKET W'MENT-RH

Footnotes

The above parts group applies to the following Mfg. Nos.:

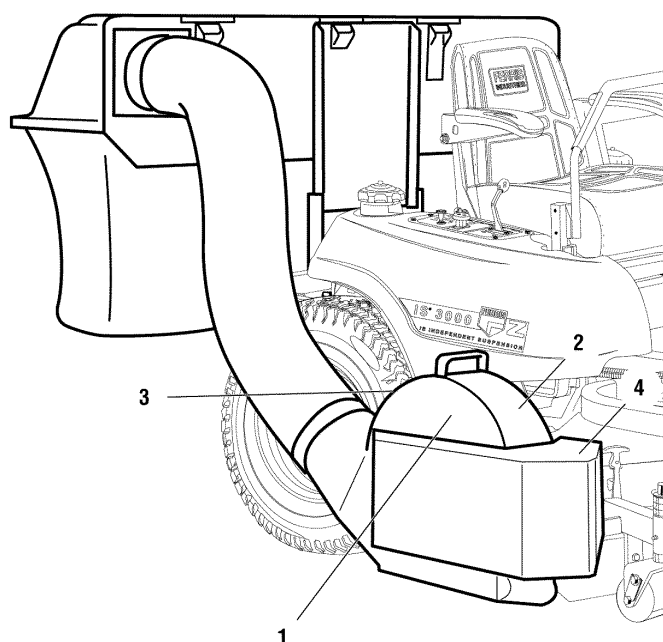
5600022 (IS1000Z Series)

5600024 (IS1000Z Series)

Decals - Brand, Safety & Instruction

NOTE: Unless noted otherwise, use the standard hardware torque specification chart.

269dclb



1 — **FAST-Vac**

2 —

<p>▲ DANGER</p> <ul style="list-style-type: none"> • Do not use this vacuum attachment on wet or icy surfaces. It may slip and cause injury or death. • Do not use this vacuum attachment on steep slopes. It may slip and cause injury or death. • Do not use this vacuum attachment on uneven surfaces. It may slip and cause injury or death. • Do not use this vacuum attachment on soft surfaces. It may slip and cause injury or death. • Do not use this vacuum attachment on hard surfaces. It may slip and cause injury or death. • Do not use this vacuum attachment on slippery surfaces. It may slip and cause injury or death. • Do not use this vacuum attachment on wet or icy surfaces. It may slip and cause injury or death. • Do not use this vacuum attachment on steep slopes. It may slip and cause injury or death. • Do not use this vacuum attachment on uneven surfaces. It may slip and cause injury or death. • Do not use this vacuum attachment on soft surfaces. It may slip and cause injury or death. • Do not use this vacuum attachment on hard surfaces. It may slip and cause injury or death. • Do not use this vacuum attachment on slippery surfaces. It may slip and cause injury or death. 	<p>▲ WARNING</p> <ul style="list-style-type: none"> • Do not use this vacuum attachment on wet or icy surfaces. It may slip and cause injury or death. • Do not use this vacuum attachment on steep slopes. It may slip and cause injury or death. • Do not use this vacuum attachment on uneven surfaces. It may slip and cause injury or death. • Do not use this vacuum attachment on soft surfaces. It may slip and cause injury or death. • Do not use this vacuum attachment on hard surfaces. It may slip and cause injury or death. • Do not use this vacuum attachment on slippery surfaces. It may slip and cause injury or death.
---	---

3 —

<p>▲ WARNING</p> <p>HIGH SPEED DISCHARGE CAN CAUSE INJURY OR DEATH. DO NOT RUN BLOWER WITHOUT DISCHARGE TUBE HOOD AND BAGS INSTALLED AND LATCHED.</p>
--

4 —

<p>▲ WARNING</p> <p>This shield must be in place at all times during operation. Mower deflector must be in down position when blower is removed.</p>

The above parts group applies to the following Mfg. Nos.:

- | | |
|-----------------------------|---|
| 5600030 (1000Z, 27HP Model) | 5600026 (IS3000Z, 27HP & IS3000Z, 25H |
| 5600024 (IS1000Z Series) | 5600027 (IS3000Z, 23HP S/N: 101-425 & I |
| 5600021 (1000Z Series) | |
| 5600023 (1000Z Series) | |
| 5600022 (IS1000Z Series) | |
| 5600025 (1000Z, 23HP Model) | |

Decals - Brand, Safety & Instruction

REF NO.	PART NO.	QTY.	DESCRIPTION
1	5046944	1	DECAL, Fast-Vac
2	5046850	1	DECAL, Danger/Warning
3	5046851	1	DECAL, Warning-Blower
4	5046883	2	DECAL, Warning-Shield

Footnotes

The above parts group applies to the following Mfg. Nos.:

5600030 (1000Z, 27HP Model) 5600026 (IS3000Z, 27HP & IS3000Z, 25H
5600024 (IS1000Z Series) 5600027 (IS3000Z, 23HP S/N: 101-425 & I
5600021 (1000Z Series)
5600023 (1000Z Series)
5600022 (IS1000Z Series)
5600025 (1000Z, 23HP Model)

Model Reference Sheet - Models w/Steel Discharge Chute

269esrf0

Mower Deck Size	2-Bag System	3-Bag System
48" Ferris 1000Z Series (All models)	5046764	5600021
48" IS Ferris IS1000Z Series (All models)	5047605	5600022
52" Ferris 1000Z Series (All Serial Numbers)	5046765	5600023
52" Ferris IS1000Z Series (Serial No. 2530 & Below)	5047607	5600024
61" Ferris 1000Z Series (23 HP Model) (All Serial Numbers)	N/A	5600025
61" Ferris 1000Z Series (27 HP Model) (Serial No. 2898 & Below)	N/A	5600030
61" Ferris IS3000ZXK27/61 Series (IS3000ZFKAV2561 - S/N: 1731 & Above)	N/A	5600026
61" (IS3000ZKAV23/61 - S/N: 101-425) (IS3000ZKAV25/61 - S/N: 101-1525)	N/A	5600027*

*Requires mower deck upgrade part number #5047312.

N/A = Not available.

Kit Contents:

5046764

- (1) 3120748 - 48" FAST-Vac Blower
- (1) 5046863 - 2-Bag Hood & Mount
- (1) 5046868 - 2-Bag Weight Mount
- (1) 1717627 - Weight, 50lbs.

5046765

- (1) 3120752 - 52" FAST-Vac Blower
- (1) 5046863 - 2-Bag Hood & Mount
- (1) 5046868 - 2-Bag Weight Mount
- (1) 1717627 - Weight, 50lbs.

5047605

- (1) 3120748 - 48" FAST-Vac Blower
- (1) 5046863 - 2-Bag Hood & Mount
- (1) 5047609 - 2-Bag Weight Mount
- (2) 1691319 - Weight, 30lbs.

5047607

- (1) 3120752 - 52" FAST-Vac Blower
- (1) 5046863 - 2-Bag Hood & Mount
- (1) 5047609 - 2-Bag Weight Mount
- (2) 1691319 - Weight, 30lbs.

5600021

- (1) 3120748 - 48" FAST-Vac Blower
- (1) 5100002 - 3-Bag Collector
- (1) 5300022 - 3-Bag Mount
- (1) 5047602 - Weight Mount
- (3) 1717627 - Weight, 50lbs.
- (1) 5300043 - Pub Pack

5600022

- (1) 3120748 - 48" FAST-Vac Blower
- (1) 5100002 - 3-Bag Collector
- (1) 5300022 - 3-Bag Mount
- (1) 5047609 - Weight Mount
- (2) 1717627 - Weight, 50lbs.
- (1) 5300043 - Pub Pack

5600023

- (1) 3120752 - 52" FAST-Vac Blower
- (1) 5100002 - 3-Bag Collector
- (1) 5300022 - 3-Bag Mount
- (1) 5047602 - Weight Mount
- (3) 1717627 - Weight, 50lbs.
- (1) 5300043 - Pub Pack

5600024

- (1) 3120752 - 52" FAST-Vac Blower
- (1) 5100002 - 3-Bag Collector
- (1) 5300022 - 3-Bag Mount
- (1) 5047609 - Weight Mount
- (2) 1717627 - Weight, 50lbs.
- (1) 5300043 - Pub Pack

5600025

- (1) 3120762 - 61" FAST-Vac Blower
- (1) 5100002 - 3-Bag Collector
- (1) 5300022 - 3-Bag Mount
- (1) 5047602 - Weight Mount
- (3) 1717627 - Weight, 50lbs.
- (1) 5300043 - Pub Pack

5600026

- (1) 3120763 - 61" FAST-Vac Blower
- (1) 5100002 - 3-Bag Collector
- (1) 5300014 - 3-Bag Mount
- (1) 5046869 - Weight Mount
- (3) 1717627 - Weight, 50lbs.
- (1) 5300043 - Pub Pack

5600027

- (1) 3120762 - 61" FAST-Vac Blower
- (1) 5100002 - 3-Bag Collector
- (1) 5300014 - 3-Bag Mount
- (1) 5046869 - Weight Mount
- (3) 1717627 - Weight, 50lbs.
- (1) 5300043 - Pub Pack

5600030

- (1) 3120762 - 61" FAST-Vac Blower
- (1) 5100002 - 3-Bag Collector
- (1) 5300022 - 3-Bag Mount
- (1) 5061134 - Weight Mount
- (3) 1717627 - Weight, 50lbs.
- (1) 5300043 - Pub Pack

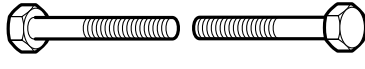
The above parts group applies to the following Mfg. Nos.:

- 5600021 (1000Z Series)
- 5600022 (IS1000Z Series)
- 5600023 (1000Z Series)
- 5600024 (IS1000Z Series)
- 5600025 (1000Z, 23HP Model)
- 5600030 (1000Z, 27HP Model)
- 5600026 (IS3000Z, 27HP & IS3000Z, 25H)
- 5600027 (IS3000Z, 23HP S/N: 101-425 & I

Hardware Identification & Torque Specifications

Common Hardware Types

Hex Head Capscrew



Carriage Bolt



Washer



Lockwasher



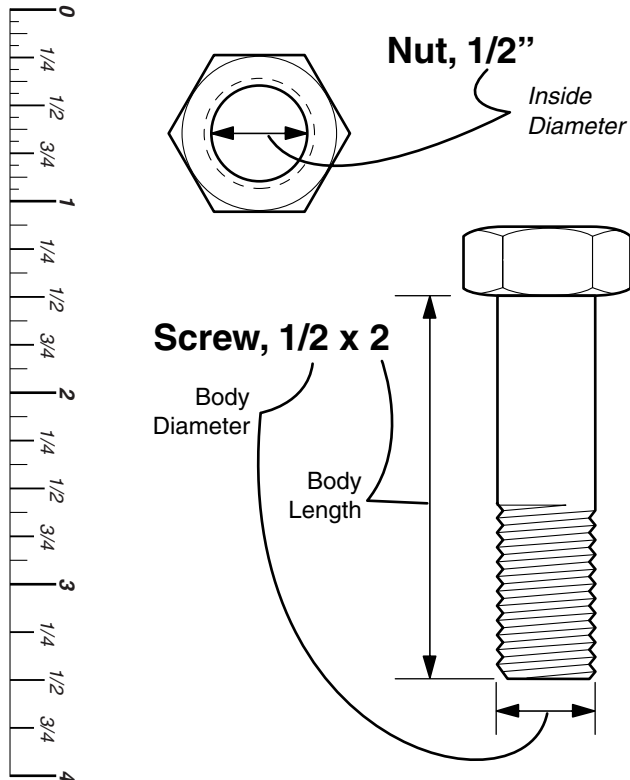
Hex Nut

Standard Hardware Sizing

When a washer or nut is identified as $1/2''$, this is the *Nominal size*, meaning the *inside diameter* is $1/2$ inch; if a second number is present it represents the *threads per inch*

When bolt or capscrew is identified as $1/2 - 16 \times 2''$, this means the *Nominal size*, or *body diameter* is $1/2$ inch; the second number represents the *threads per inch* (16 in this example, and the final number is the *body length* of the bolt or screw (in this example 2 inches long).

The guides and ruler furnished below are designed to help you select the appropriate hardware and tools.



Torque Specification Chart

FOR STANDARD MACHINE HARDWARE (Tolerance $\pm 20\%$)

Hardware Grade	No Marks SAE Grade 2		SAE Grade 5		SAE Grade 8	
	in/lbs ft/lbs	Nm.	in/lbs ft/lbs	Nm.	in/lbs ft/lbs	Nm.
8-32	19	2.1	30	3.4	41	4.6
8-36	20	2.3	31	3.5	43	4.9
10-24	27	3.1	43	4.9	60	6.8
10-32	31	3.5	49	5.5	68	7.7
1/4-20	66	7.6	8	10.9	12	16.3
1/4-28	76	8.6	10	13.6	14	19.0
5/16-18	11	15.0	17	23.1	25	34.0
5/16-24	12	16.3	19	25.8	27	34.0
3/8-16	20	27.2	30	40.8	45	61.2
3/8-24	23	31.3	35	47.6	50	68.0
7/16-14	30	40.8	50	68.0	70	95.2
7/16-20	35	47.6	55	74.8	80	108.8
1/2-13	50	68.0	75	102.0	110	149.6
1/2-20	55	74.8	90	122.4	120	163.2
9/16-12	65	88.4	110	149.6	150	204.0
9/16-18	75	102.0	120	163.2	170	231.2
5/8-11	90	122.4	150	204.0	220	299.2
5/8-18	100	136	180	244.8	240	326.4
3/4-10	160	217.6	260	353.6	386	525.0
3/4-16	180	244.8	300	408.0	420	571.2
7/8-9	140	190.4	400	544.0	600	816.0
7/8-14	155	210.8	440	598.4	660	897.6
1-8	220	299.2	580	788.8	900	1,244.0
1-12	240	326.4	640	870.4	1,000	1,360.0

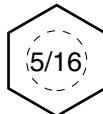
NOTES

- These torque values are to be used for all hardware excluding: locknuts, self-tapping screws, thread forming screws, sheet metal screws and socket head setscrews.
- Recommended seating torque values for locknuts:
 - for prevailing torque locknuts - use 65% of grade 5 torques.
 - for flange whizlock nuts and screws - use 135% of grade 5 torques.
- Unless otherwise noted on assembly drawings, all torque values must meet this specification.

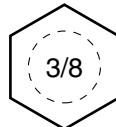
Wrench & Fastener Size Guide



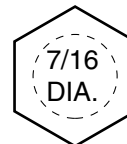
$1/4''$ Bolt or Nut
Wrench— $7/16''$



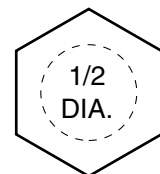
$5/16''$ Bolt or Nut
Wrench— $1/2''$



$3/8''$ Bolt or Nut
Wrench— $9/16''$



$7/16''$ Bolt or Nut
Wrench (Bolt)— $5/8''$
Wrench (Nut)— $11/16''$



$1/2''$ Bolt or Nut
Wrench— $3/4''$

Parts Manual Fast-Vac

Grass Collection Systems

Fits 2004 Models & Prior with Steel Discharge Chute

IT IS THE POLICY OF FERRIS INDUSTRIES TO IMPROVE ITS PRODUCTS WHENEVER IT IS POSSIBLE AND PRACTICAL TO DO SO. WE RESERVE THE RIGHT TO MAKE CHANGES OR ADD IMPROVEMENTS AT ANY TIME WITHOUT INCURRING ANY OBLIGATION TO MAKE SUCH CHANGES ON PRODUCTS MANUFACTURED



Ferris Industries

5375 North Main Street
Munnsville, NY 13409 USA
800-933-6175

www.ferrisindustries.com

© Copyright 2006 Ferris Industries
All Rights Reserved. Printed In USA.