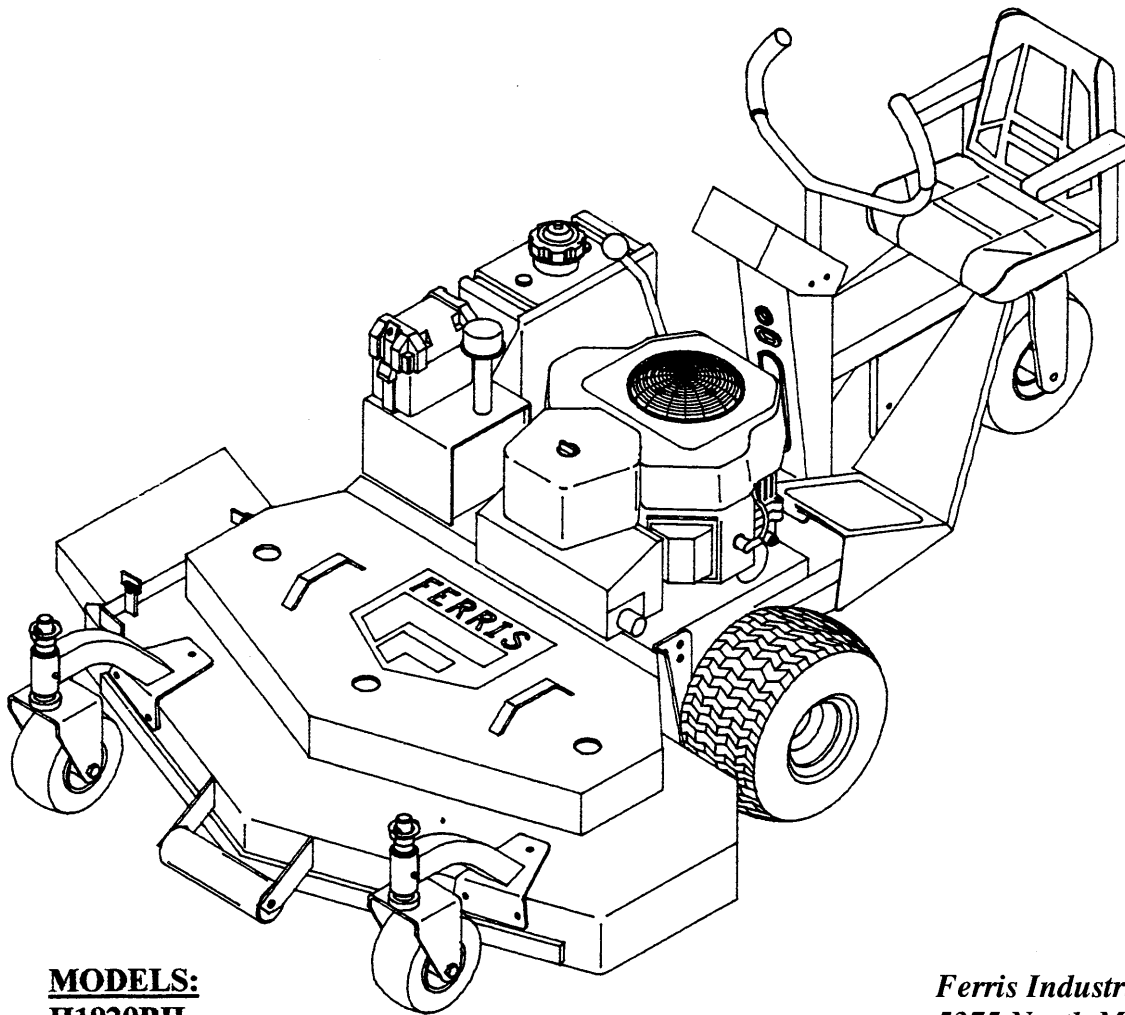


PRICE \$3.00

FERRIS

ILLUSTRATED PARTS LIST

Hydro Drive Rider Commercial Mowers



MODELS:

H1920BH

H1920BV

H2220K

H2220B

H2222K

CUTTER DECKS:

OF52

OF61

R52

R61


*Ferris Industries Inc.
5375 North Main Street
Munnsville, NY 13409*

**Manual No. 21741
Beginning Serial No. 4259
Printed in USA
December 1997**



TABLE OF CONTENTS

	Page
52" Cutter Deck Assemblies.....	1-2
61" Cutter Deck Assemblies.....	3-4
Engine Deck Assembly.....	5-6
Transmission Assembly.....	7-8
Rider Frame Assembly.....	9-10
Kohler Wiring Schematics.....	13-18
Briggs & Stratton Wiring Schematics.....	19-24
Replacement Decals.....	25-26

FERRIS 	
MODEL	SERIAL

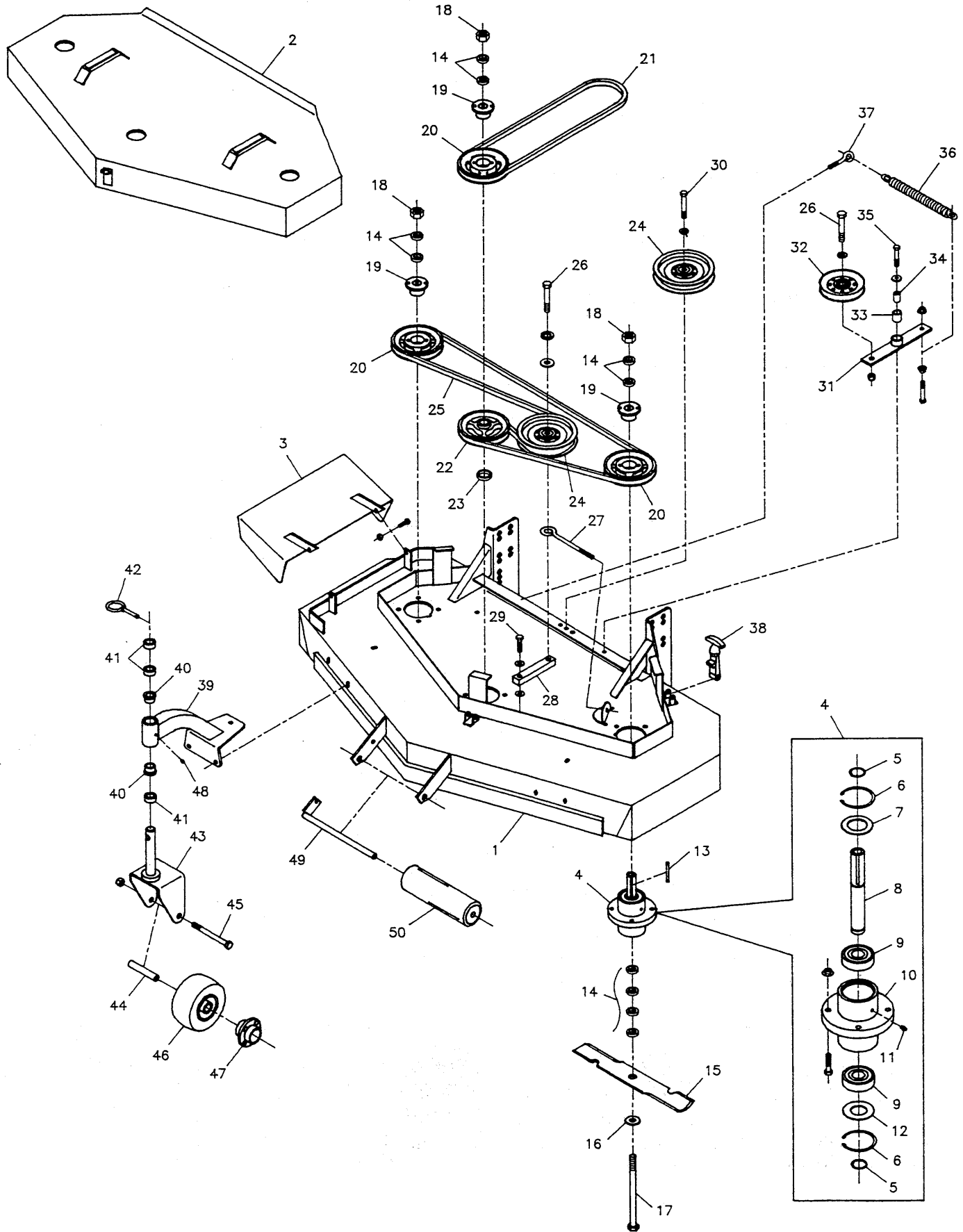
FERRIS INDUSTRIES, INC.	
MADE IN U.S.A.	

NOTE:

To insure that the correct parts for your machine are ordered and shipped, please be sure to use the parts book and pages that specifically cover your machine. Whenever in doubt, include the serial number of your machine along with the part numbers. For future reference, fill in the model and serial number of your machine in the space provided above.

WARNING: THOROUGHLY READ OPERATOR'S MANUAL AND COMPLETELY ASSEMBLE ALL LOOSE PARTS BEFORE OPERATING MOWER. DO NOT OPERATE YOUR MOWER UNLESS ALL PARTS ARE ATTACHED AND IN GOOD WORKING ORDER. KEEP YOUR MOWER IN GOOD REPAIR AT ALL TIMES.

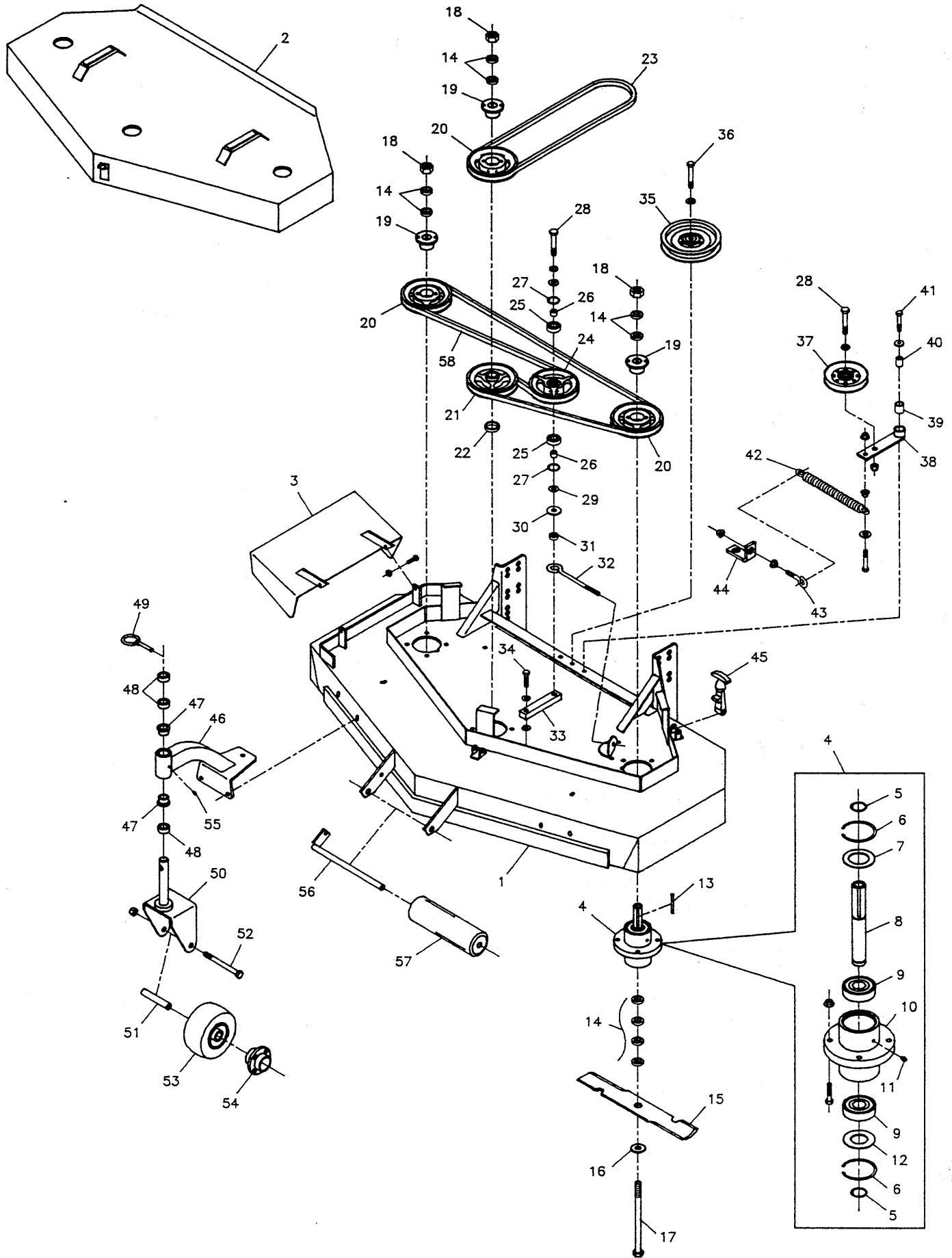
52" CUTTER DECK ASSEMBLIES



52" CUTTER DECK ASSEMBLIES

REF. NO.	PART NO.	DESCRIPTION	REF. NO.	PART NO.	DESCRIPTION
1	1530843	52" Cutter Deck	38	1520841-1	Rubber Latch
2	1530845	52" Guard	39	1543887	Caster Mount
3	1541668	Discharge Chute	40	1521541	Flange Bushing
4	1530301	Spindle Assembly	41	1541476	Caster Spacer
5	1520864	Snap Ring	42	8820655	Lynch Pin
6	1520866	Snap Ring	43	1541702	Caster Wheel Mount
7	1541653	Washer	44	1541657	Sleeve
8	1541480	Spindle Shaft	45	1525017-44	1/2-13 x 5-1/2" GD. 5 Bolt
9	1520828	Bearing	46	1521181	Caster Wheel Assembly
10	1530293	Aluminum Housing	47	1521181-4	Hub Complete (Stamped M)
11	1520095	Grease Fitting	--	1521262	Hub Complete (Stamped T)
12	1541672	Washer	48	1521729	Grease Fitting
13	1550407-9	Key 1/4" x 2-1/2"	49	1541655	Roller Pin
14	1541477	Blade Spacer	50	1520785	Roller
15	1521227	Blade			
16	1525159	5/8" SAE Flat Washer			
17	1525019-76	5/8-11 x 9-1/2" GD. 5 Bolt			
18	8825040	5/8-11 Hex Nut			
19	1520819	Hub			
20	1520814	Cast Iron Pulley (H22's)			
--	1521492	Split Steel Pulley (H19's)			
21	1521298	Deck Drive Belt (H22's)			
--	1521677	Deck Drive Belt (H19's)			
22	1541478	Cast Iron Pulley (H22's)			
--	1521492	Split Steel Pulley (H19's)			
23	1541484	Spindle Spacer			
24	1521096	Idler Pulley			
25	1521297	Blade Belt			
26	1525018-18	1/2-20 x 2-1/4" GD. 5 Bolt			
27	1521811	3/8" x 8" Eyebolt			
--	1541671	J-Bolt (before SN 613, H19's)			
28	1544610	Idler Arm			
--	1541622	Idler Arm (before SN 613, H19's)			
29	1525016-14	7/16-20 x 1-3/4" GD. 5 Bolt			
30	1525018-20	1/2-20 x 2-1/2" GD. 5 Bolt			
31	1542338	Idler Arm w/ Bushing			
32	1521097	V-Idler Pulley			
33	1520876B	Brass Bushing			
34	1542134	Pivot Spacer			
35	8825011-14	5/16-18 x 1-3/4" GD. 5 Bolt			
36	1521103	Spring			
37	1525141	Eyebolt			

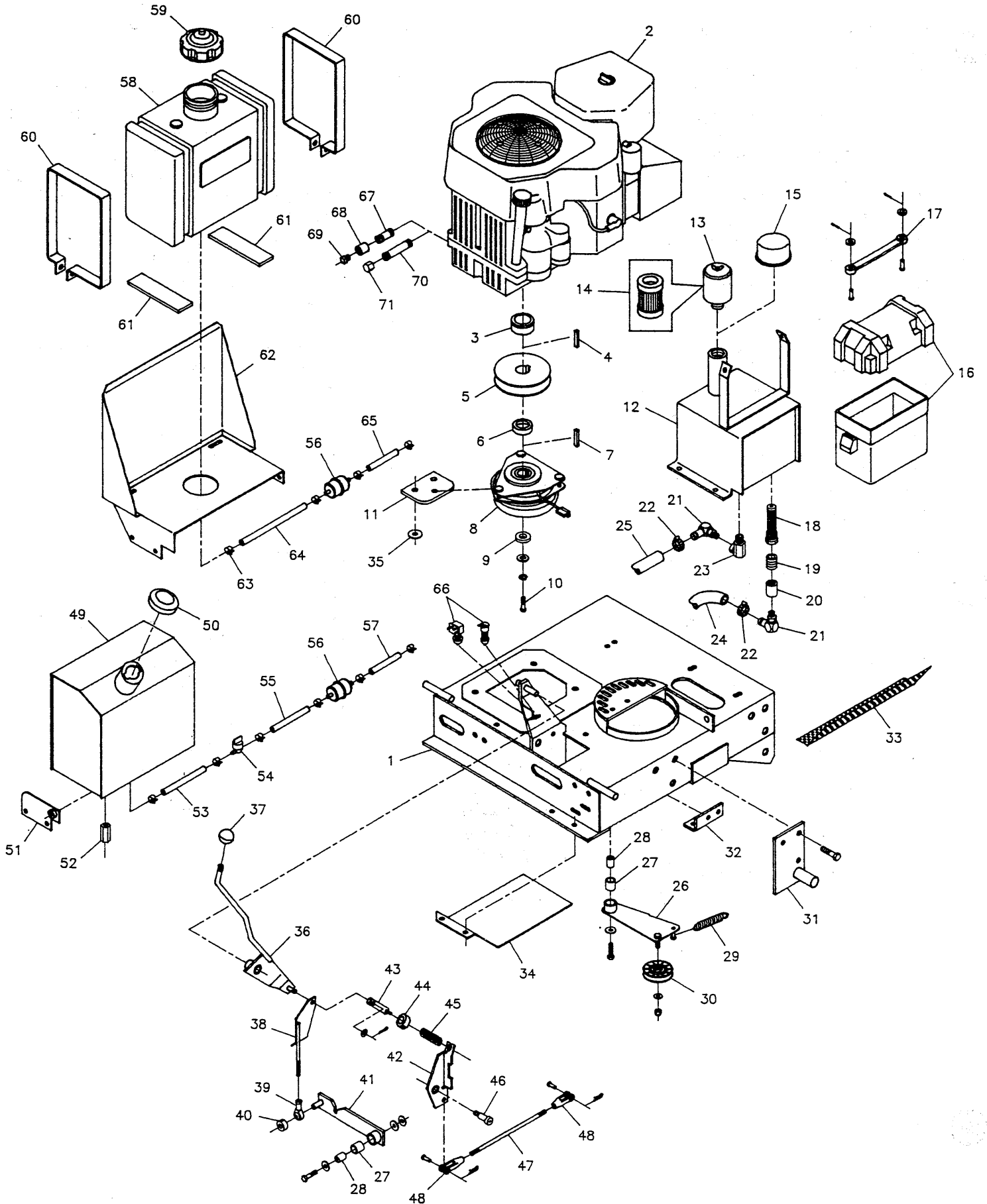
61" CUTTER DECK ASSEMBLIES



61" CUTTER DECK ASSEMBLIES

REF. NO.	PART NO.	DESCRIPTION	REF. NO.	PART NO.	DESCRIPTION
1	1530820	61" Cutter Deck	32	1521811	3/8" x 8" Eyebolt
2	1530822	61" Guard	--	1541671	J-Bolt (before SN 4881, H19's) (before SN 4821, H22's)
3	1541668	Discharge Chute	33	1544610	Idler Arm
4	1530301	Spindle Assembly	--	1541622	Idler Arm (before SN 4881, H19's) (before SN 4821, H22's)
5	1520864	Snap Ring	34	1525016-14	7/16-20 x 1-3/4" GD. 5 Bolt
6	1520866	Snap Ring	35	1521096	Idler Pulley
7	1541653	Washer	36	1525018-20	1/2-20 x 2-1/2" GD. 5 Bolt
8	1541480	Spindle Shaft	37	1521097	V-Idler Pulley
9	1520828	Bearing	38	1542145	Idler Arm w/ Bushing
10	1530293	Aluminum Housing	39	1520876B	Brass Bushing
11	1520095	Grease Fitting	40	1542134	Pivot Spacer
12	1541672	Washer	41	8825011-14	5/16-18 x 1-3/4" GD. 5 Bolt
13	1550407-9	Key 1/4" x 2-1/2"	42	1521103	Spring
14	1541477	Blade Spacer	43	1525141	Eyebolt
15	1520842	Blade	44	1542142	Spring Anchor
16	1525159	5/8" SAE Flat Washer	45	1520841-1	Rubber Latch
17	1525019-76	5/8-11 x 9-1/2" GD. 5 Bolt	46	1543887	Caster Mount
18	8825040	5/8-11 Hex Nut	47	1521541	Flange Bushing
19	1520819	Hub	48	1541476	Caster Spacer
20	1520815	Cast Iron Pulley (H22's)	49	8820655	Lynch Pin
--	1521492	Split Steel Pulley (H19's)	50	1541702	Caster Wheel Mount
21	1541478	Cast Iron Pulley (H22's)	51	1541657	Sleeve
--	1521492	Split Steel Pulley (H19's)	52	1525017-44	1/2-13 x 5-1/2" GD. 5 Bolt
22	1541484	Spindle Spacer	53	1521181	Caster Wheel Complete
23	1521063	Deck Drive Belt (H22's)	54	1521181-4	Hub Complete (Stamped M)
--	1521511	Deck Drive Belt (H19's)	--	1521262	Hub Complete (Stamped T)
24	1530819	Idler Pulley (Complete)	55	1521729	Grease Fitting
--	1541481	Idler Pulley Only	56	1541655	Roller Pin
25	1520827	Bearing	57	1520785	Roller
26	1520870	Bearing Insert	58	1520824	Blade Belt
27	1520865	Snap Ring			
28	1525018-18	1/2-20 x 2-1/4" GD. 5 Bolt			
--	1525018-14	1/2-20 x 1-3/4" Bolt (before SN 4881, H19's) (before SN 4821, H22's)			
29	8825158	1/2" SAE Washer (SN 4881 & up, H19's) (SN 4821 & up, H22's)			
30	1525150	1/2" USS Washer (SN 4881 & up, H19's) (SN 4821 & up, H22's)			
31	1544609	Idler Spacer (SN 4881 & up, H19's) (SN 4821 & up, H22's)			

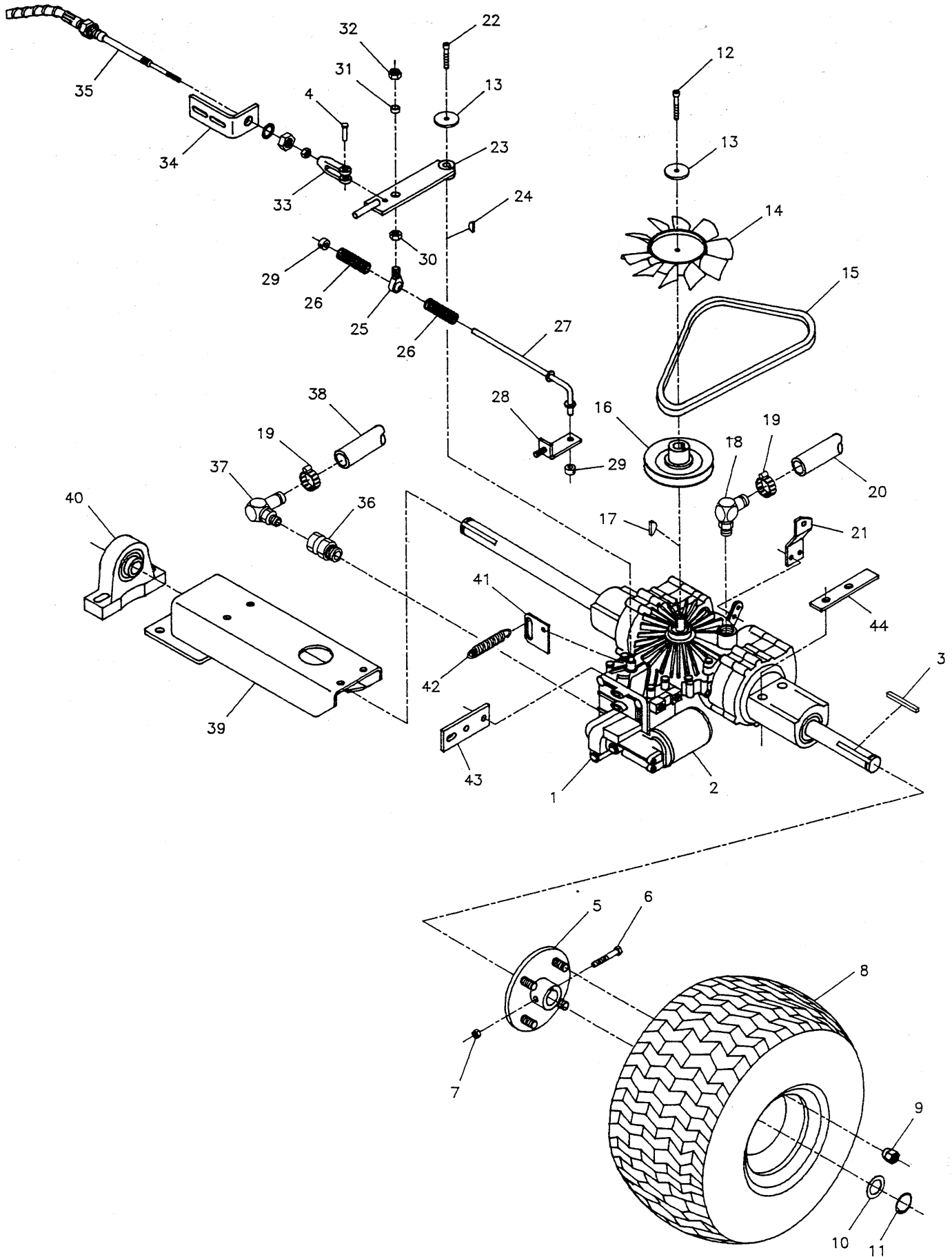
ENGINE DECK ASSEMBLY



ENGINE DECK ASSEMBLY

REF. NO.	PART NO.	DESCRIPTION	REF. NO.	PART NO.	DESCRIPTION
1	1530775	Engine Deck Weldment	41	1542317	Neutral Lock Out w/ Bushing
2	1521531	Kohler 20 HP	42	1543971	Brake Rocker Arm
-	1521532	Kohler 22 HP	43	1543982	Spring Bar
-	1521310	Briggs & Stratton 18 HP	44	8810477	5/8" Set Collar
-	1521808	Briggs & Stratton 20 HP	45	1521667	Spring
3	1542840	Kohler Crank Shaft Spacer	46	1525523	1/2" x 1" Shoulder Bolt
-	1543581	Briggs Crank Shaft Spacer	47	1543976	Brake Linkage Rod
4	1550407-10	Key 1/4" x 5/8"	48	1520979	Clevis
5	1542302	Kohler Engine Pulley	49	1530790	Fuel Tank Assembly
-	1542129	Briggs Engine Pulley	50	1541657	Gas Cap
6	1542304	Kohler Spacer	51	1543980	Fuel Tank Mount Plate
-	1543625	Briggs Spacer	52	8820766	Coupler Nut
7	1550407-1	Key 1/4" x 1"	53	1550831-19	1/4" Fuel Line, 19" Long
8	1521145	Electric Clutch (Kohler)	54	1521235	Fuel Shut Off
-	1521083	Electric Clutch (Briggs)	55	1550831-9	1/4" Fuel Line, 9" Long (Kohler)
9	1542132	Retaining Washer	-	1550831-19	1/4" Fuel Line, 19" Long (Briggs)
10	1543626	Dri-Lock Bolt	56	1521178-3	Fuel Filter (Kohler only)
11	1543636	Clutch Anti-Rotational Pad	57	-----	Fuel Line, supplied by Kohler
12	1530789	Hydro Tank Assembly (complete w/ fittings and breather)	-	1550831-6	1/4" Fuel Line, 6" Long (Briggs)
-	1530774	Hydro Tank Weldment	58	1521868	6 Gallon Fuel tank
13	1521080	Air Filter Assembly	-	1522151	Grommet, Fuel Tank
14	1521080-1	Air Filter Element	59	1521866	Gas Cap
15	1521871	Breather (SN 5958 & up, H22's only)	60	1544693	6 Gallon Fuel tank Strap
16	1521666	Battery Box w/ Cover	61	1521877	Rubber Tank Mount Pad
17	1521670	Rubber Strap	62	1544692	Fuel Tank Mount
18	1521082	Line Strainer	63	1520835	Fuel Line Clamp
19	1521163	1/2" NPT Close Nipple	64	1550831-29	1/4" Fuel Line, 29" Long (Kohler)
20	1520985	1/2" NPT Pipe Coupler	-	1550831-25	1/4" Fuel Line, 25" Long (Briggs)
21	1521160	90° Fitting	65	-----	Fuel Line, supplied by Kohler
22	1521164	Hose Clamp	-	1550831-19	1/4" Fuel Line, 19" Long (Briggs)
23	1521132	90° Fitting	66	1521522	Plunger Switch (2 terminals)
24	1550836-4.87	Transmission Inlet Hose, 4.875" Long	-	1521765	Brake Switch (4 terminals)
25	1550836-14.75	Transmission Return Hose, 14.75" Long	67	1521122	Pipe Nipple
26	1542169	Hydro Drive Idler Arm w/ Bushing	68	1520862	Coupler
27	1520876B	Brass Bushing	69	1525049	Plug
28	1542134	Pivot Spacer	70	1521707	Nipple
29	1520807	Spring	71	1521466	Pipe Cap
30	1543627	Idler Pulley			
31	1541582R	Pivot Bracket Right (shown)			
-	1541582L	Pivot Bracket Left			
32	1543660	Plate Bracket			
33	1544016	Grass Screen (steel fuel tank only)			
34	1544616	Transmission Skid Plate			
35	1544617	Clutch Anchor Washer			
36	1530919	Brake Lever Weldment (5/8" ID tube)			
-	1543985	Brake Lever Weldment (3/4" ID tube)			
37	1521733	Knob (1/2" thread)			
-	8810551	Knob (5/16" thread)			
38	1543972	Brake Lock			
39	1521146	Ball Joint			
40	8820047	5/16" Set Collar			

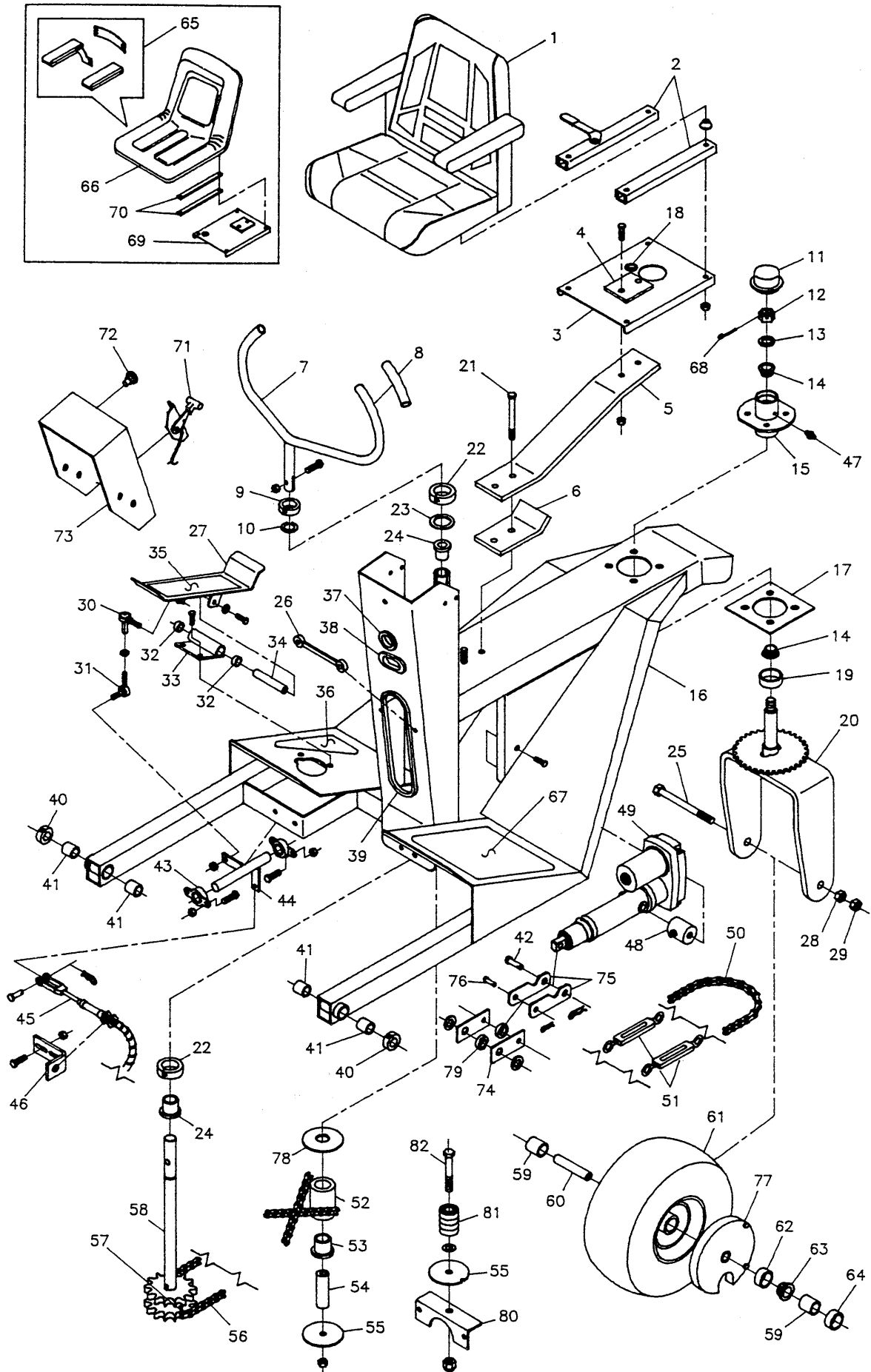
TRANSMISSION ASSEMBLY



TRANSMISSION ASSEMBLY

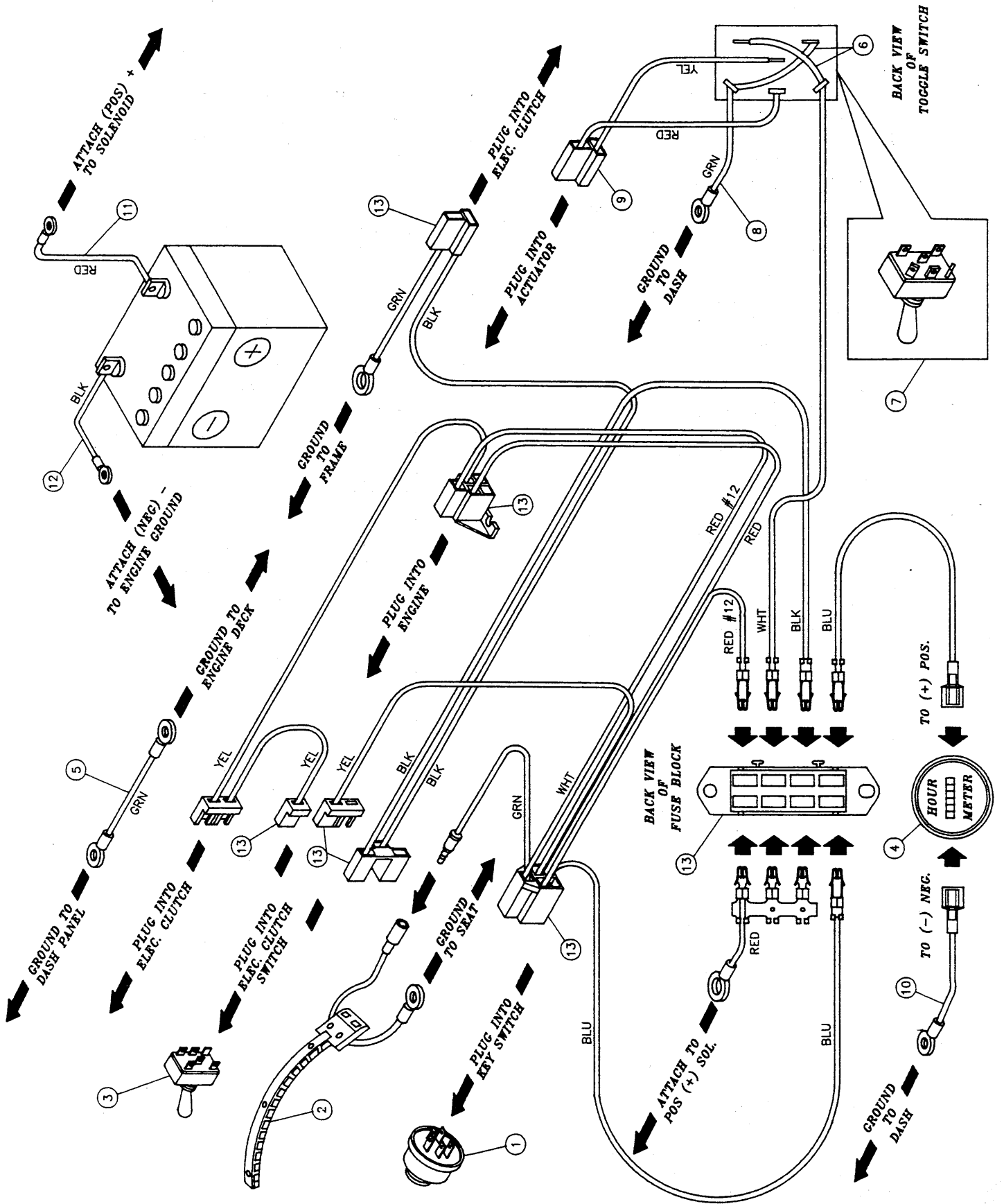
REF. NO.	PART NO.	DESCRIPTION
1	1521425	Transmission
2	1521068-1	Oil Filter
3	1543683	Drive Axle Key
4	1525121-8	1/4" x 1" Clevis Pin
5	1530480	Hub
6	1525025	5/16-24 x 2" GD. 8 Bolt
7	8825045	5/16-24 Nylon Lock Nut
8	1521094	20" Tire/Wheel Assembly
--	1521045	18" Tire/Wheel Assembly
9	8820601	Lug Nut
10	1520928	Shim Washer
11	1521210	Snap Ring
12	1525268	1/4-20 x 1-3/4" Allen Screw
13	1544577	Transmission Fan Washer
14	1521081	Fan
15	1521105	Hydro Drive Belt
16	1543647	Transmission Input Pulley
17	1521839	Hi-Pro Woodruff Key
18	1521161	90° Fitting
19	1521164	Hose Clamp
20	1550836-4.87	Transmission Inlet Hose, 4.875" Long
21	1543674	Brake Lever
22	1525269	1/4-20 x 1-1/2" Allen Screw
23	1542319	Transmission Stroke Arm
24	8820149	Woodruff Key
25	1521124	Ball Joint
26	1521102	Spring
27	1542329	Neutral Spring Rod
28	1542328	Neutral Bracket
29	8820047	5/16" Set Collar
30	8825035	3/8-24 Hex Nut
31	1541930	Spacer
32	8825097	3/8-24 Nylon Lock Nut
33	1520981	5/16" Rod End Clevis
34	1542170	Cable Bracket
35	1521089	Push/Pull Cable
36	1521166	Adapter
37	1521160	90° Fitting
38	1550836-14.75	Transmission Return Hose, 14.75" Long
39	1543675	Axle Support
40	1521095	Bearing
41	1543671	Transmission Dump Valve Lever
42	1520639	Spring
43	1542177	Transmission Bracket
44	1544011	Differential Spacer

RIDER FRAME ASSEMBLY



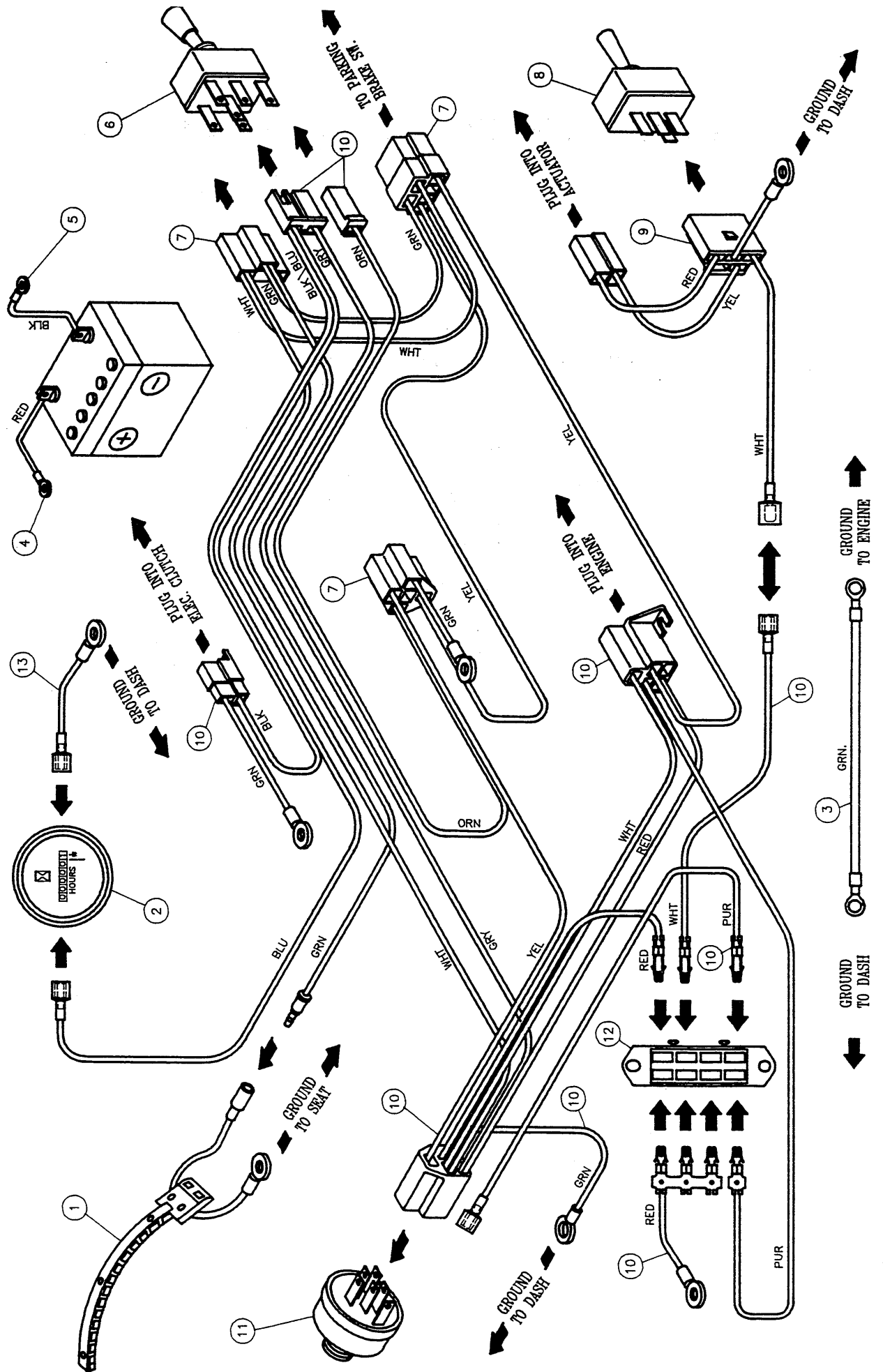
RIDER FRAME ASSEMBLY

REF. NO.	PART NO.	DESCRIPTION	REF. NO.	PART NO.	DESCRIPTION
1	1520930	Black & Silver Seat Complete	50	1510673-36	Roller Chain
--	1520930-9	Back Cushion	51	1542090	Turnbuckle
--	1520930-8	Seat Cushion	52	1543684	Steering Roller Assembly
--	1520930-2	Right Arm Rest	53	1521665	Bushing
--	1520930-4	Left Arm Rest	54	1543653	Steering Tube
1A	1521883	Seat w/ embossed "FERRIS" logo	55	1543652	Chain Washer
2	1520930-3	Seat Adjuster (pair)	56	1510673-31	Roller Chain
3	1542082	Seat Plate	57	8810674	Connecting Link
4	1541522	Seat Plate Support	58	1542087	Steering Sprocket Shaft Weldment
5	1541836	Seat Spring	59	1542315	Axle Spacer
6	1542252	Seat Spring Support	60	1542314	Steering Tire Axle
7	1541770	Handle Bar	61	1521140	Tire/Wheel Assembly
8	1520837	Foam Grip	62	1520883	Bearing Cup
9	8820602	1" Split Collar	63	1520884	Bearing
10	1521034	Snap Ring	64	1540885	Seal
11	1521073	Dust Cap	65	1521185-1	Arm Rest Kit (optional)
12	1525104	3/4-16 Hex Nut	--	1521185-2	Arm Rest Right/Left (interchangeable)
13	1525160	Washer	66	1521185	Seat
14	1520884	Bearing	67	1541774	Safety Walk
15	1542110	Steering Hub	68	1525203-10	Cotter Pin
16	1530770	Trailer Weldment	69	1542447	Seat Plate
17	1542721	Steering Hub Support	70	1542428	Seat Plate Spacer
18	1521077	1/2" Grommet	71	1521662	Throttle Cable
19	1521072	Seal	72	1521675	Choke Cable (Briggs)
20	1542127	Steering Wheel Mount Weldment	--	1521663	Choke Cable (Kohler)
21	1525016-40	7/16-20 x 5" GD. 5 Bolt	73	1544212	Dash
22	1521052	1-1/4" Split Collar	74	1544618	Link (SN 585 & up, shown)
23	1525520-3	Shim	--	1543676	Link
24	1520823	Bushing	75	1543677	Double Link
25	1525019-76	5/8-11 x 9-1/2" GD. 5 Bolt	76	1525214-8	3/8" Clevis Pin
26	1520959	Rubber Strap	77	1544372	Wheel Weight (P72 Deck only)
27	1542185	Foot Pedal	78	1544612	Chain Washer Top
28	1525040	5/8-11 Hex Nut	79	1541477	Spindle Spacer
29	8825103	5/8-11 Nylon Lock Nut	80	1544627	Chain Roller Mount
30	1520805	Ball Joint	81	1521882	Bearing (4)
31	1521049	Ball Joint	82	1525280-24	5/8-11 x 3" GD. 2 Bolt
32	1520875	Bushing			
33	1542137	Foot Pedal Mount			
34	1543147	Foot Pedal Pivot Shaft			
35	1542281	Foot Pedal Safety Walk			
36	1542282	Safety Walk			
37	1521379	7/8" Grommet			
38	1521397	1-1/4" Grommet			
39	1550852-24	Body Molding, 24" Long			
40	8810114	3/4" Split Collar			
41	1520876P	Plastic Bushing			
42	1543688	1/2" Clevis Pin			
43	1521089	Brass Flange Bushing			
44	1542184	Foot Pedal Bell Crank			
45	1521089	Push/Pull Cable			
46	1542170	Cable Bracket			
47	8820095	Grease Fitting			
48	1544082	Trunion Mount			
49	1543536	Electric Actuator			



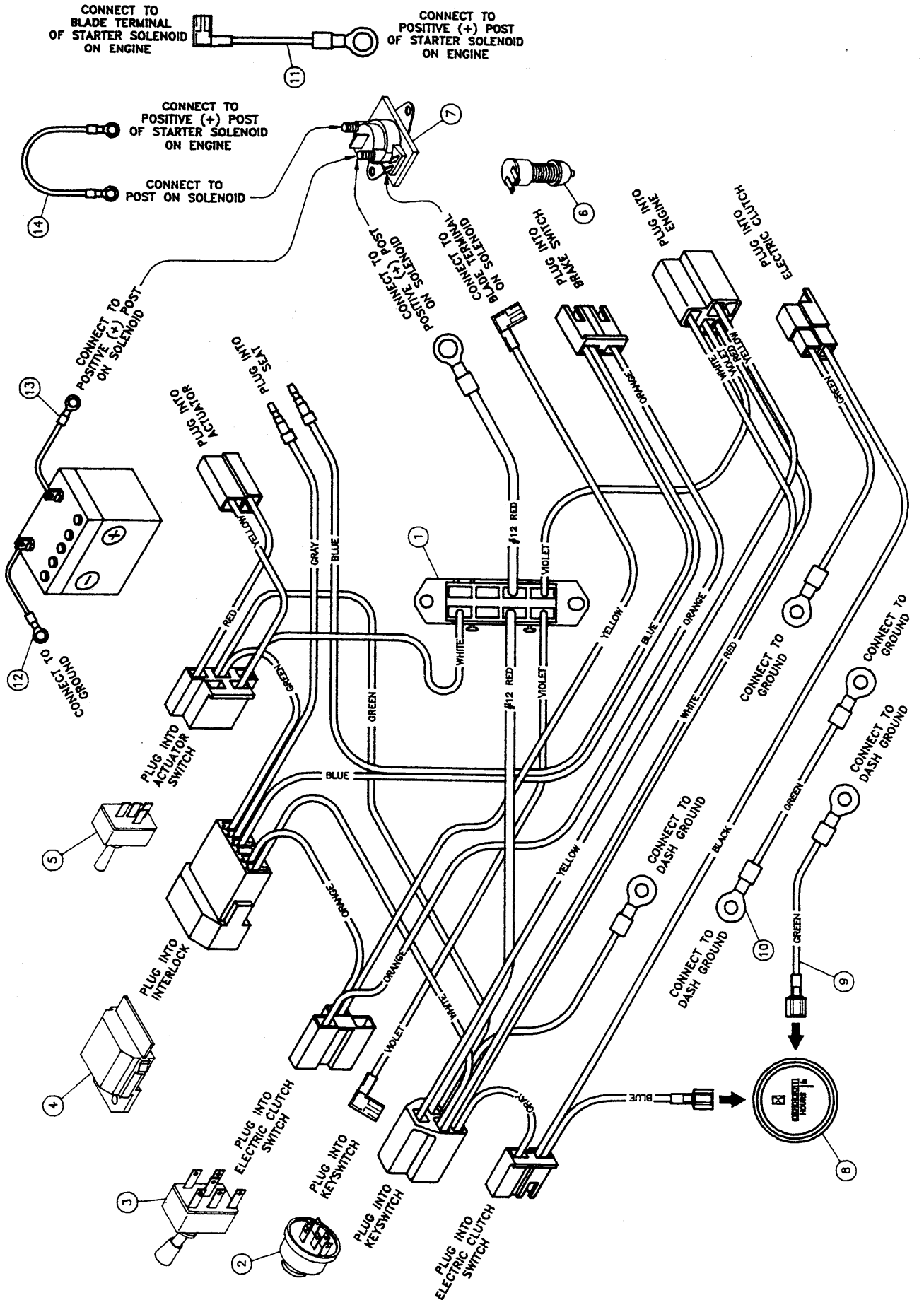
KOHLER ELECTRICAL SCHEMATIC

REF. NO.	PART NO.	DESCRIPTION
1	1520836	Key Switch
2	-----	Seat Switch
3	1521545	Electric Clutch Switch
4	1520060	Hour Meter
5	1543695	Dash Ground Wire
6	1543668	Jumper Wire
7	1521651	Actuator Switch
8	1543666	Switch Ground Wire
9	1543667	Actuator Wire Assembly
10	1543665	Hour Meter Ground Wire
11	1521542	Positive (+) Battery Cable
12	1521406	Negative (-) Battery Cable
13	1530778	Rider Main Harness



KOHLER ELECTRICAL SCHEMATIC

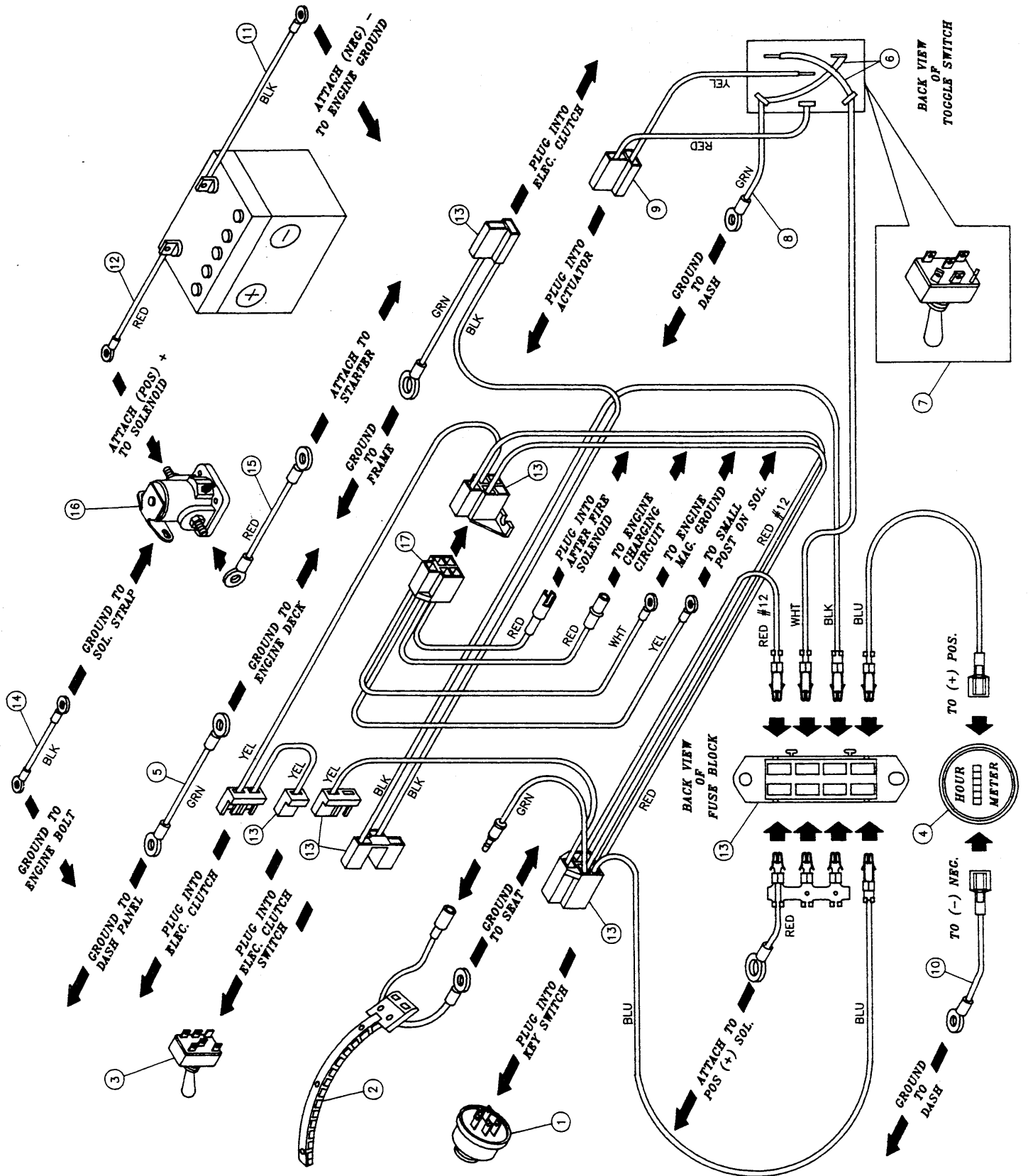
REF. NO.	PART NO.	DESCRIPTION
1	-----	Seat Switch
2	1520060	Hour Meter
3	1544502	Dash Ground Wire
4	1521542	Positive (+) Battery Cable
5	1521406	Negative (-) Battery Cable
6	1521545	Electric Clutch Switch
7	1544499	Relay/Clutch Harness
8	1521734	Actuator Switch
9	1544474	Actuator Harness
10	1544504	Rider Main Harness
11	1520927	Key Switch
12	1521518	Fuse Block
13	1544501	Hour Meter Ground Wire



KOHLER ELECTRICAL SCHEMATIC

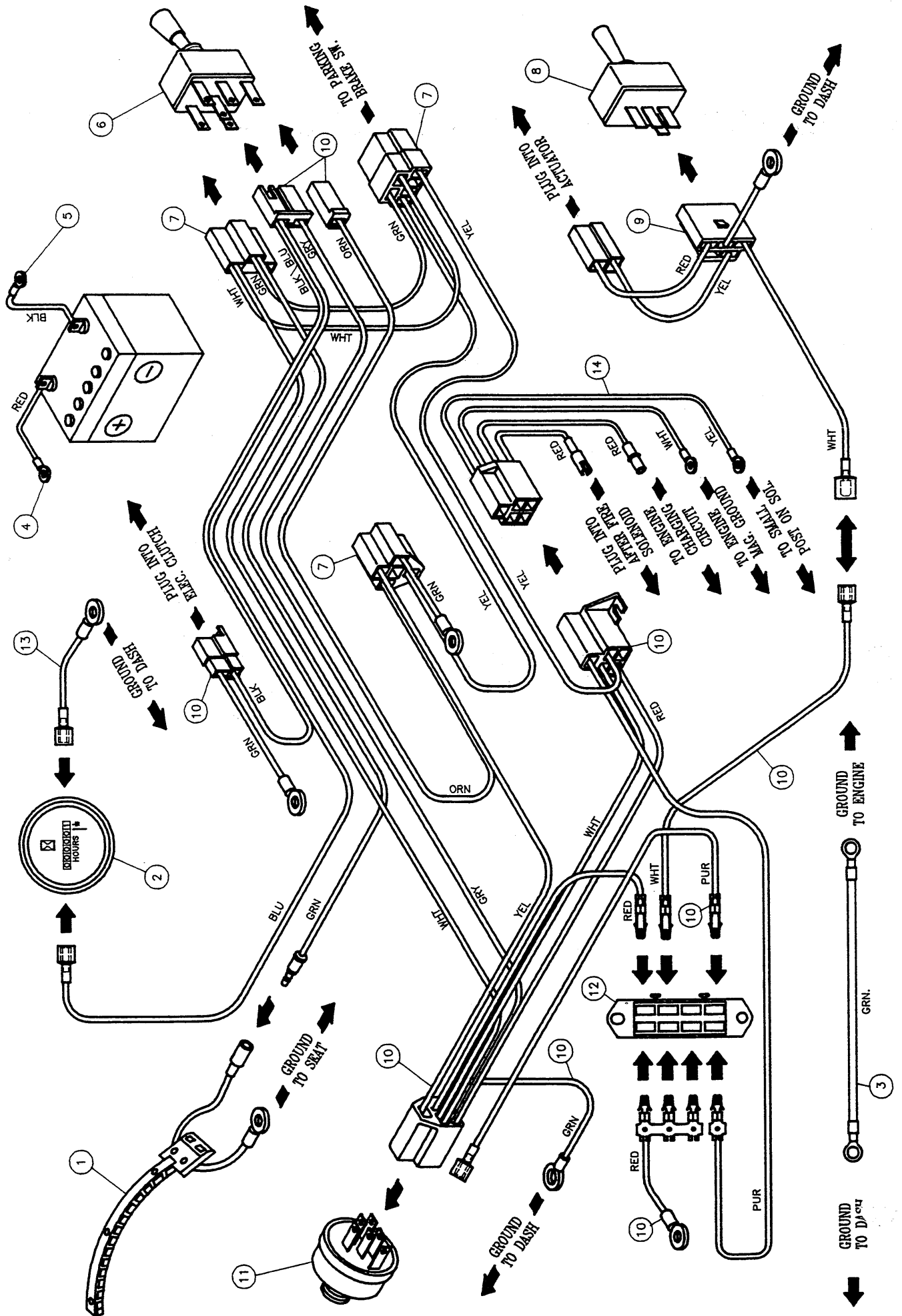
Serial No. 6153 & up

REF. NO.	PART NO.	DESCRIPTION
1	1531051	Rider Wire Harness
2	1520927	Key Switch
3	1521545	Electric Clutch Switch
4	1521885	1601 Interlock
5	1521734	Actuator Switch
6	1521522	Plunger Switch N.O.
7	1521886	Starter Solenoid
8	1520060	Hour Meter
9	1544501	Hour Meter Ground Wire
10	1544502	Dash Ground Wire
11	1544731	Starter Jumper Wire
12	1521406	Negative (-) Battery Cable
13	1521542	Positive (+) Battery Cable
14	1544732	Starter Solenoid Cable



BRIGGS & STRATTON ELECTRICAL SCHEMATIC

REF. NO.	PART NO.	DESCRIPTION
1	1520927	Key Switch
2	-----	Seat Switch
3	1521545	Electric Clutch Switch
4	1520060	Hour Meter (optional)
5	1543695	Dash Ground Wire
6	1543668	Jumper Wire
7	1521651	Actuator Switch
8	1543666	Switch Ground Wire
9	1543667	Actuator Wire Assembly
10	1543665	Hour Meter Ground Wire (optional)
11	1521406	Negative (-) Battery Cable
12	1521542	Positive (+) Battery Cable
13	1530783	Rider Main Harness
14	1544014	Ground Cable
15	1544092	Starter Cable
16	1520801	Starter Solenoid
17	1544015	Briggs Adapter Harness



BRIGGS & STRATTON ELECTRICAL SCHEMATIC

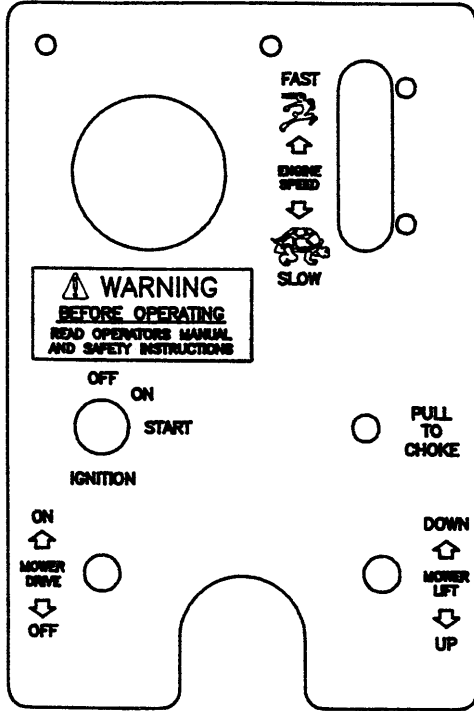
REF. NO.	PART NO.	DESCRIPTION
1	-----	Seat Switch
2	1520060	Hour Meter
3	1544502	Dash Ground Wire
4	1521542	Positive (+) Battery Cable
5	1521406	Negative (-) Battery Cable
6	1521545	Electric Clutch Switch
7	1544499	Relay/Clutch Harness
8	1521734	Actuator Switch
9	1544474	Actuator Harness
10	1544504	Rider Main Harness
11	1520927	Key Switch
12	1521518	Fuse Block
13	1544501	Hour Meter Ground Wire
14	1544015	Briggs Adapter Harness

BRIGGS & STRATTON ELECTRICAL SCHEMATIC

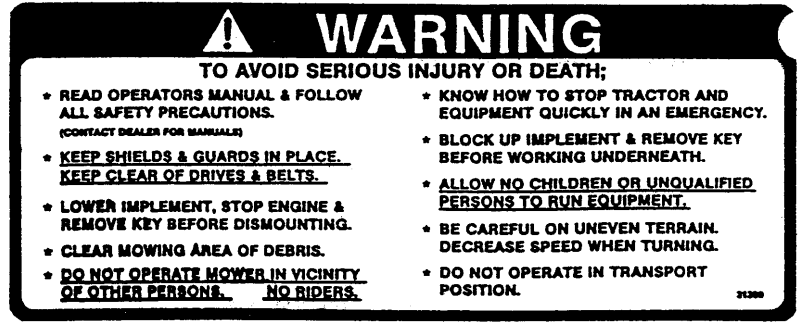
Serial No. 6153 & up

REF. NO.	PART NO.	DESCRIPTION
1	1531051	Rider Wire Harness
2	1520927	Key Switch
3	1521545	Electric Clutch Switch
4	1521885	1601 Interlock
5	1521734	Actuator Switch
6	1521522	Plunger Switch N.O.
7	1521886	Starter Solenoid
8	1520060	Hour Meter
9	1544501	Hour Meter Ground Wire
10	1544502	Dash Ground Wire
11	1544730	Briggs Adapter Harness
12	1521406	Negative (-) Battery Cable
13	1521542	Positive (+) Battery Cable
14	1544092	Starter Cable

REPLACEMENT DECALS



1521884



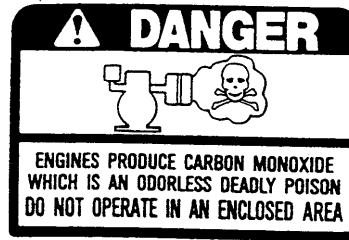
1520850



1520337



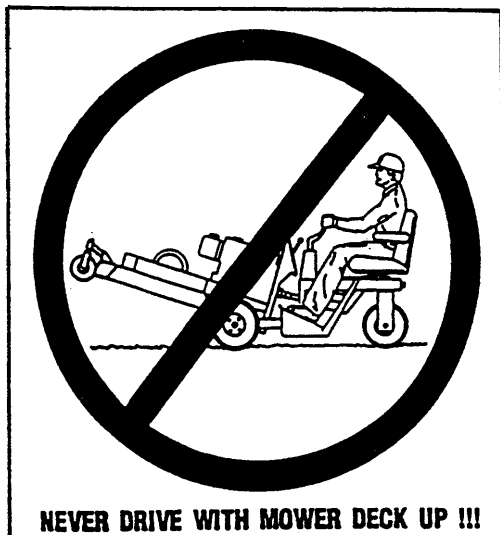
1520851



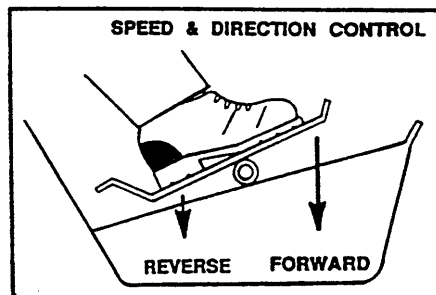
1521411



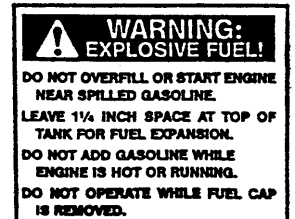
1520852



1521156



1521111



1521159

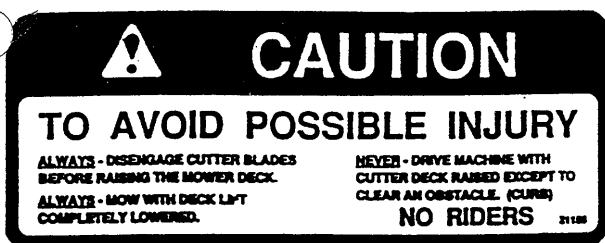


1521112

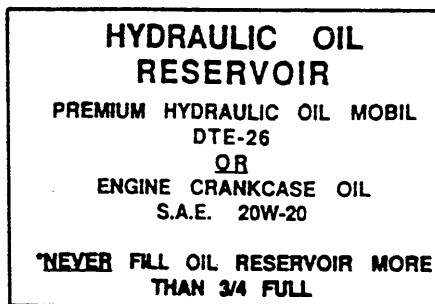


1521057

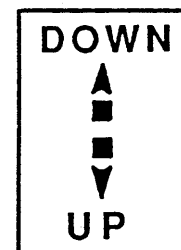
REPLACEMENT DECALS



1521158



1521114



1521113



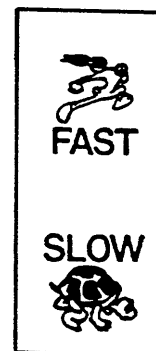
1521126



1521110



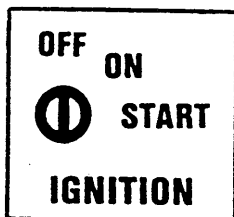
1521154



1520859



1521109



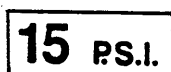
1520861



1520939



1521155



1521153



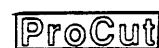
1521036



1520849



1520846



1521300



1521299



1521302

