

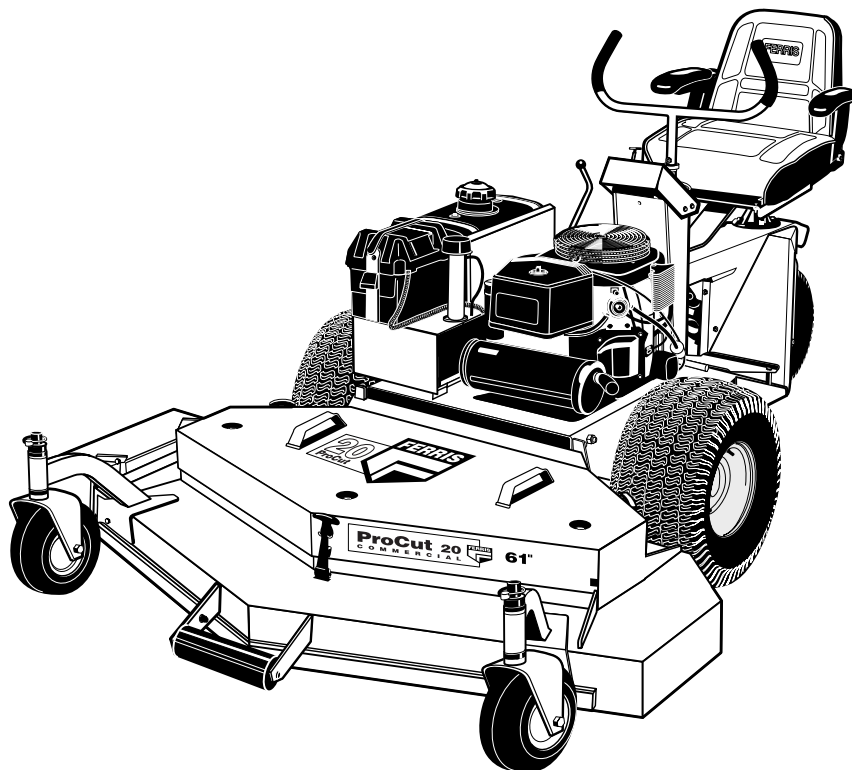


Parts Manual

ProCut 20 Series

3-Wheel Riding Mower

Serial No. 7671 & Above



Models:

H2220K

R52

R61

Ferris Industries

5375 North Main Street
Munnsville, NY 13409 USA
800-933-6175

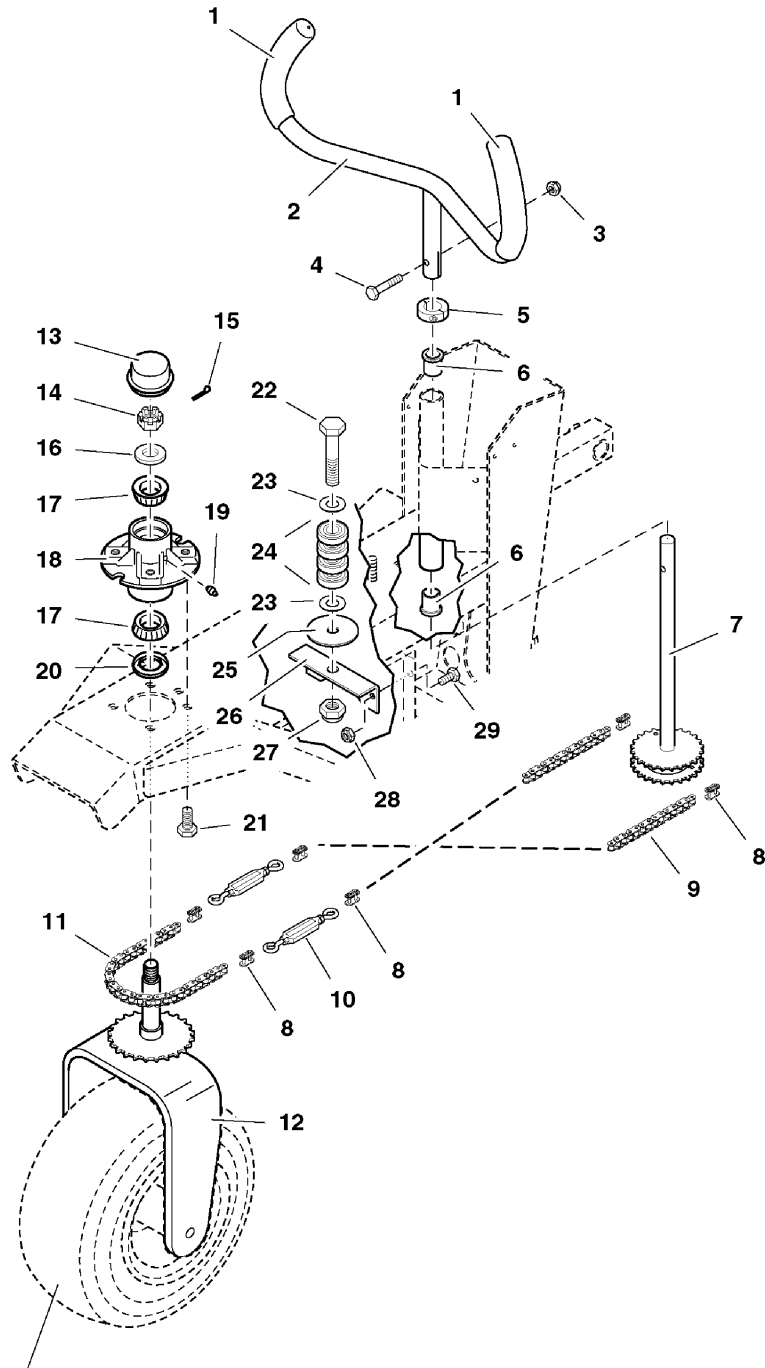
5022204
Revision 07
Rev. Date: 5/2006
TP 400-7094-07-H2-F

MODEL COMPONENTS	PAGE
Steering Group	4
Seat & Mount Group	6
Fuel Supply Hose & Tank Replacement Part Group	8
Fuel Tank & Mount Group	10
Instrument & Control Panel Group	12
Engine Accessories Group - Kohler	14
Engine & PTO Group - Kohler	16
Transaxle Drive Group	18
Motion Control Group - Engine Deck	20
Motion Control Group - Trailer	22
Hydraulic Group	24
Parking Brake Group	26
Deck Lift Group	28
Transaxle & Mount Group	30
Tire & Wheel Group	32
Decal Group - Brand & Model	34
Decal Group - Safety & Operation	36
Operator Presence Group	38
52" Mower Deck - Housing, Covers, Spindles & Blades - Rear Discharge	40
52" Mower Deck - Pulleys, Belt & Idler Arm	42
52" & 61" Mower Deck - Rollers & Casters	44
61" Mower Deck - Housing, Covers, Spindles & Blades - Rear Discharge	46
61" Mower Deck - Pulleys, Belt & Idler Arm	48
Electrical Schematics - Kohler (S/N: 11581 & below)	52-55
Electrical Schematics - Kohler (S/N: 11582 & above)	56-59
Torque Specification Chart	Inside Back Cover

Steering Group

094STR0

NOTE: Unless noted otherwise,
use the standard hardware torque
specification chart.



See Wheels & Tires Group

The above parts group applies to the following Mfg. Nos.:
H2220K (S/N: 7671 & Above)

Steering Group

REF NO.	PART NO.	QTY.	DESCRIPTION
1	5020837	2	GRIP, Foam
2	5041770B	1	STEERING HANDLE
3	5025096	1	NUT, 3/8-16 Hex Nylon Lock
4	5025013X12	1	BOLT, 3/8-16 x 1-1/2
5	5020602	1	COLLAR, 1" Split
6	5020823	2	BUSHING, Flange
7	5042087	1	SHAFT, Steering Sprocket
8	5010674	6	CONNECTOR, #40 Chain Link
9	5010673X31	2	CHAIN, #40 Roller, 31 Links
10	5042090	2	TURNBUCKLE
11	5010673X35	1	CHAIN, #40 Roller, 35 Links
12	5042127B	1	MOUNT, Steering Tire
13	5021073	1	CAP
14	5025104	1	NUT, 3/4-16 Hex Slotted
15	5025203X10	1	COTTER PIN, 1/8" X 1-1/4"
16	5025160	1	WASHER, 3/4" SAE
17	5020884	2	BEARING, Tapered Roller
18	5042110	1	HUB, Steering
19	5020095	1	GREASE FITTING
20	5021072	1	GREASE SEAL
21	5025018X10	4	BOLT, 1/2-20 x 1-1/4
22	5025280X24	1	BOLT, 5/8-11 x 3
23	5025281	2	WASHER, 5/8" SAE
24	5021882	4	BEARING, Roller
25	5043652	1	WASHER, Chain
26	5044627B	1	MOUNT, Chain Roller
27	5025282	1	NUT, 5/8-11 Hex Jam Nylon Lock
28	5025057	2	NUT, 5/16-18 Hex Nylon Lock
29	5025011X6	2	BOLT, 5/16-18 x 3/4

Footnotes

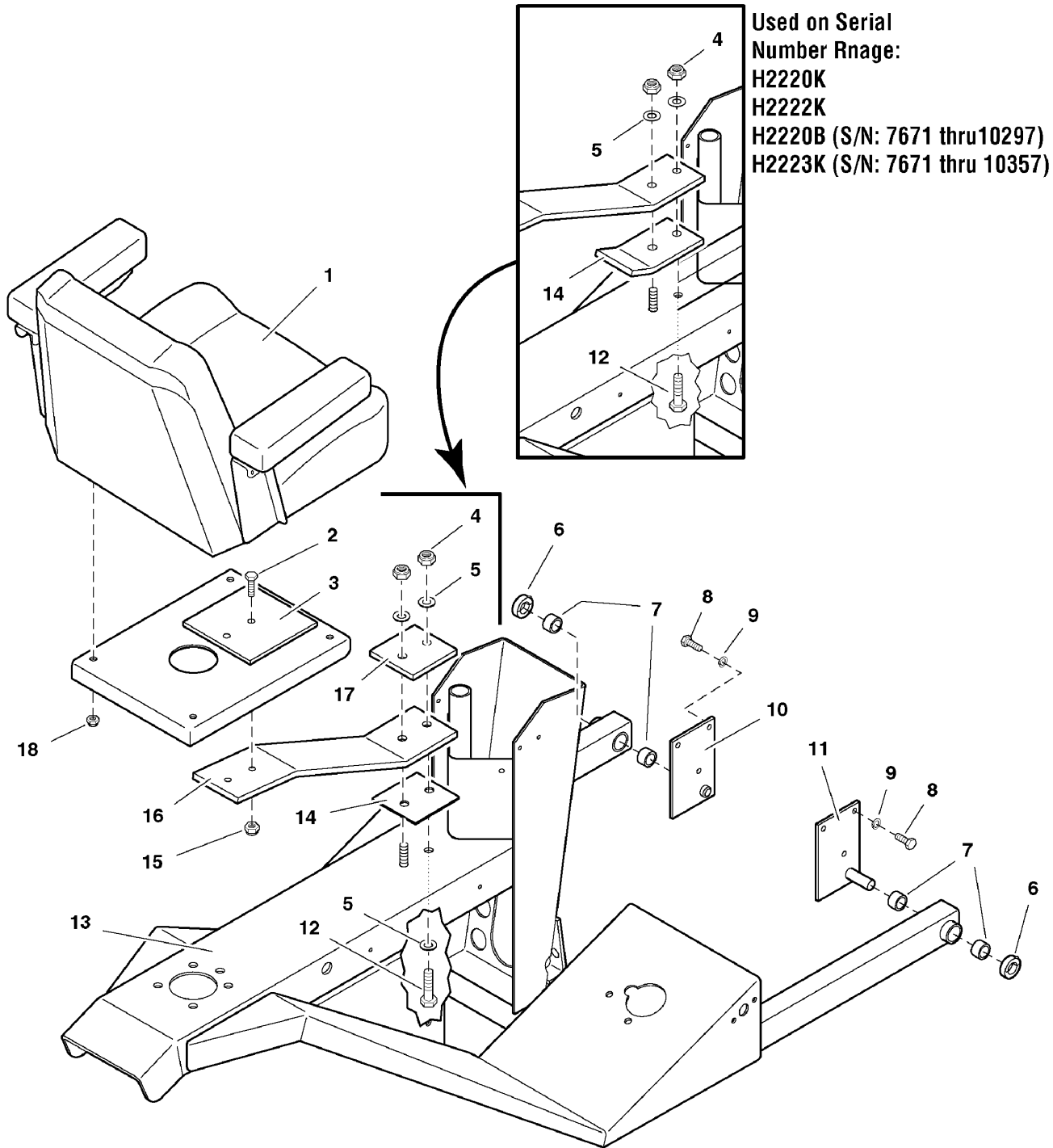
The above parts group applies to the following Mfg. Nos.:

H2220K (S/N: 7671 & Above)

Seat & Mount Group

094STM

NOTE: Unless noted otherwise,
use the standard hardware torque
specification chart.



The above parts group applies to the following Mfg. Nos.:
H2220K (S/N: 7671 & Above)

Seat & Mount Group

REF NO.	PART NO.	QTY.	DESCRIPTION
1	5022031	1	SEAT, Gray, Complete
1	5022031X2	1	CUSHION, Bottom, Gray
1	5022031X4	1	CUSHION, Back, Gray
1	5022185	2	ARM REST, Complete
1	5020930X3	1	SEAT ADJUSTER RAILS (set of 2)
2	5025013X10	2	BOLT, 3/8-16 x 1-1/4
3	5045574B	1	PLATE, Seat Mount
4	5025094	2	NUT, 7/16-20 Hex Nylon Lock
5	5025381	3	WASHER, 7/16" GD9 (H2220B, S/N: 10298 & above / H2223K, S/N: 10298 & above)
5	5025157	2	WASHER, 7/16" SAE H2220B, S/N: 7671 thru 10297 / H2223K, S/N: 7671 thru 10357
6	5010477	2	COLLAR, 5/8" Set
7	5020876P	4	BUSHING, Plastic
8	5025011X8	6	BOLT, 5/16-18 x 1
9	5025170	6	WASHER, 5/16" Lock
10	5045570B	1	PIVOT BRACKET-LH
11	5045571B	1	PIVOT BRACKET-RH
12	5025380	1	BOLT, 7/16-20 x 2 (H2220B, S/N: 10298 & above / H2223K, S/N: 10298 & above)
12	25291-14	1	BOLT, 7/16-20 x 1-3/4 (H2220B, S/N: 7671 - 10297 / H2223K, S/N: 7671 - 10357)
13	5031113B	1	TRAILER FRAME
14	5048224A	1	SHIM, Seat Spring, Lower (H2220B, S/N: 10298 & above / H2223K, S/N: 10298 & above)
14	5042252B	1	SUPPORT, Seat Spring (H2220B, S/N: 7671 - 10297 / H2223K, S/N: 7671 - 10357)
15	5025096	2	NUT, 3/8-16 Hex Nylon Lock
16	5048222A	1	SEAT SPRING (H2220B, S/N: 10298 & above / H2223K, S/N: 10298 & above)
16	5041836B	1	SEAT SPRING (H2220B, S/N: 7671 - 10297 / H2223K, S/N: 7671 - 10357)
17	5048223A	1	SHIM, Seat Spring, Upper (H2220B, S/N: 10298 & above / H2223K, S/N: 10298 & above)
18	5025057	4	NUT, 5/16-18 Hex Nylon Lock
19	5100652	1	SPRING, EXTENSION, 4" SEAT ADJUSTERS (Not shown.)

Footnotes

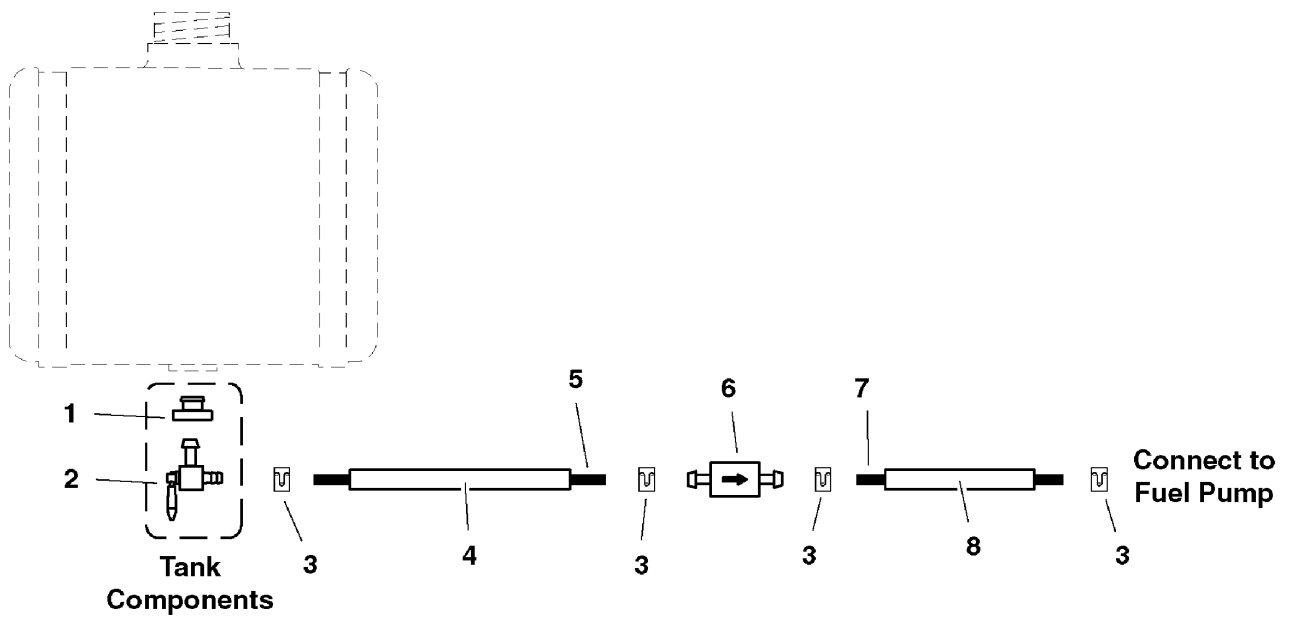
The above parts group applies to the following Mfg. Nos.:

H2220K (S/N: 7671 & Above)

Fuel Supply Hose & Tank Replacement Part Group

094FSH0

NOTE: Unless noted otherwise,
use the standard hardware torque
specification chart.



The above parts group applies to the following Mfg. Nos.:

H2220K (S/N: 7671 & Above)

Fuel Supply Hose & Tank Replacement Part Group

REF NO.	PART NO.	QTY.	DESCRIPTION
1	5022151	1	RUBBER BUSHING
2	5022152	1	FUEL SHUTOFF VALVE
3	5020835	4	CLAMP, Hose
4	5050833X24	1	WIRE LOOM, 24"
5	5050831X25	1	1/4" Fuel Line, 25" Long
6	5021178X3	1	FUEL FILTER
7	5050831X19	1	1/4" Fuel Line, 19" Long
8	5050833X16	1	WIRE LOOM, 16"

Footnotes

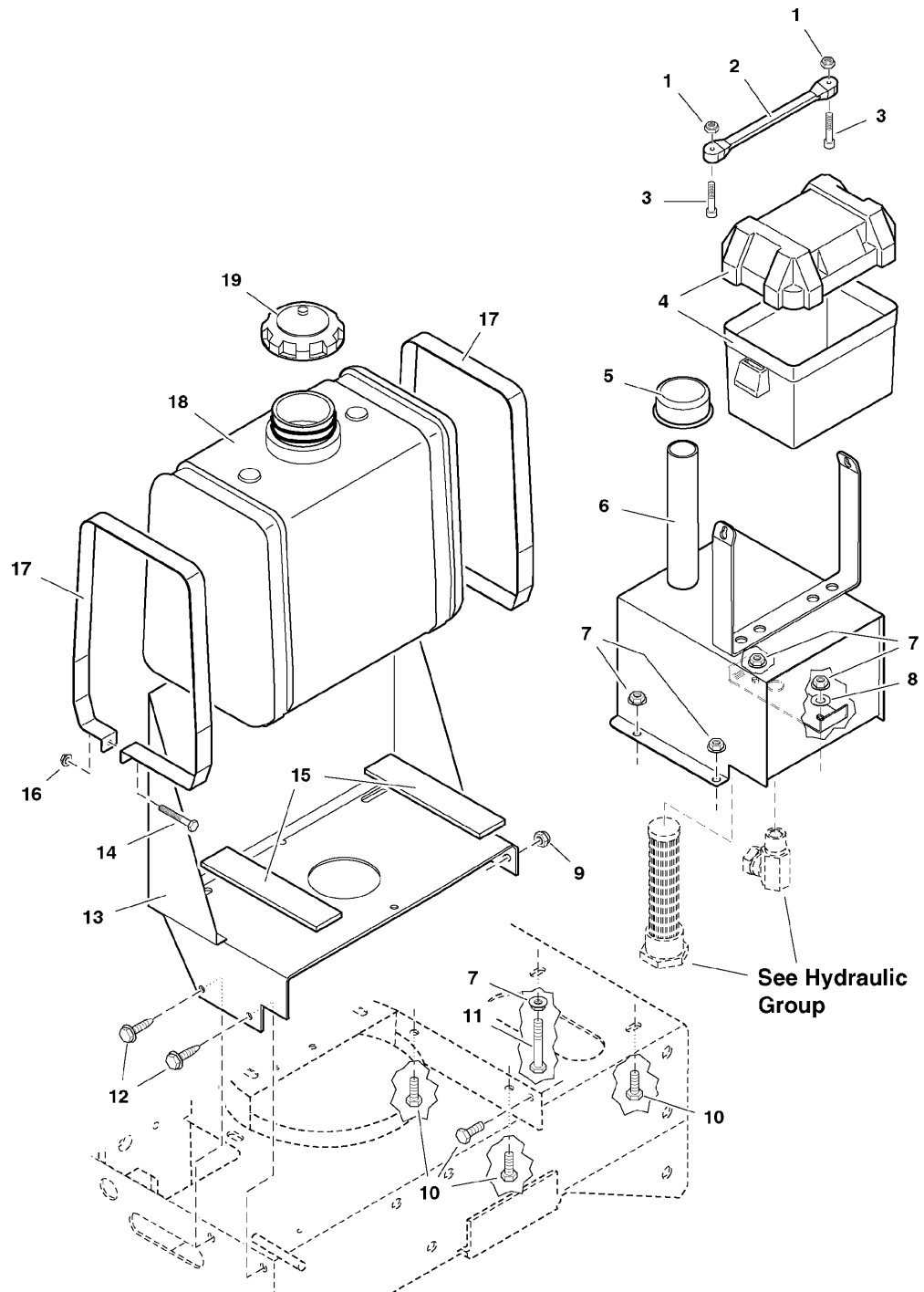
The above parts group applies to the following Mfg. Nos.:

H2220K (S/N: 7671 & Above)

Fuel Tank & Mount Group

NOTE: Unless noted otherwise,
use the standard hardware torque
specification chart.

094TNK0



The above parts group applies to the following Mfg. Nos.:
H2220K (S/N: 7671 & Above)

Fuel Tank & Mount Group

REF NO.	PART NO.	QTY.	DESCRIPTION
1	5025271	2	NUT, #10-24 Hex Nylon Lock
2	5021670	1	RUBBER STRAP
3	5025270	2	SCREW, #10-24 x 1
4	5046188	1	BATTERY BOX
5	5021871	1	BREATHER
6	5030789	1	HYDRO TANK ASSEMBLY, Complete
6	5030774B	1	HYDRO TANK
6	21125-7	3	FOIL TAPE
7	5025127	5	NUT, 5/16-18 Hex Small Serrated Flange
8	5025155	1	WASHER, 5/16" SAE
9	5025057	1	NUT, 5/16-18 Hex Nylon Lock
10	5025011X6	4	BOLT, 5/16-18 x 3/4
11	5025011X14	1	BOLT, 5/16-18 x 1-3/4
12	5025059X6	2	BOLT, Self Tapping, 5/16-18 x 3/4
13	5044692B	1	FUEL TANK MOUNT
14	5025010X12	2	BOLT, 1/4-20 X 1-1/2
15	5021877	2	RUBBER PAD
16	5025126	2	NUT, 1/4-20 Hex Serrated Flange
17	5044693B	2	FUEL TANK STRAP
18	5021868	1	FUEL TANK, 6 Gallon
19	5022158	1	FUEL TANK CAP

Footnotes

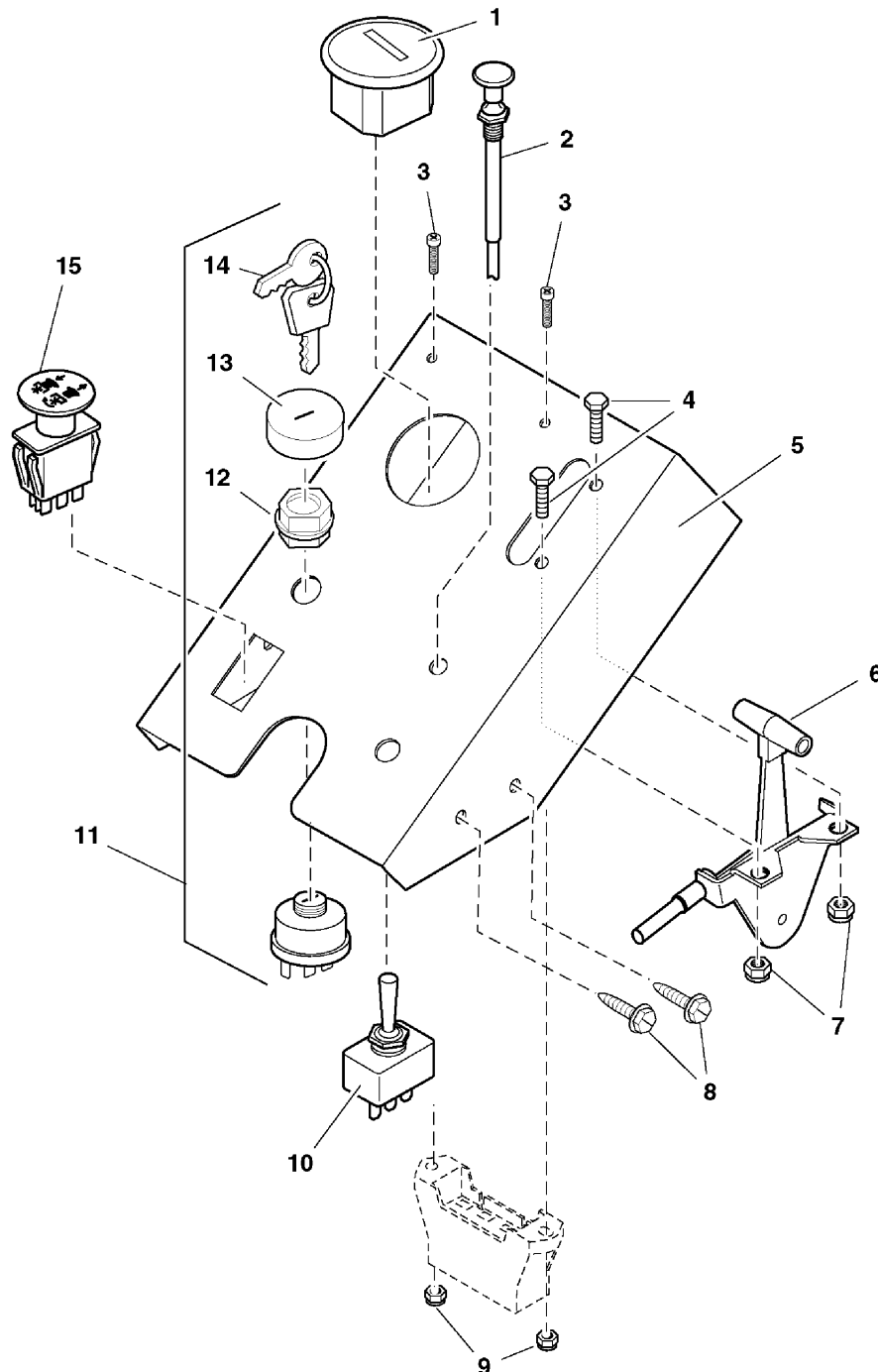
The above parts group applies to the following Mfg. Nos.:

H2220K (S/N: 7671 & Above)

Instrument & Control Panel Group

094INS0

NOTE: Unless noted otherwise,
use the standard hardware torque
specification chart.



The above parts group applies to the following Mfg. Nos.:
H2220K (S/N: 7671 & Above)

Instrument & Control Panel Group

REF NO.	PART NO.	QTY.	DESCRIPTION
1	5020060	1	HOUR METER
2	5021675	1	CABLE, Choke Control, 45" (Briggs)
2	5021663	1	CABLE, Choke Control, 57" (Kohler)
3	5025270	2	SCREW, #10-24 x 1
4	5025010X6	2	BOLT, 1/4-20 x 3/4
5	5045193B	1	DASH PANEL
6	5021662	1	CABLE, Throttle, 54"
7	5025095	2	NUT, 1/4-20 Hex Nylon Lock
8	5025279X6	4	BOLT, Self-Tapping, 1/4-20 x 3/4
9	5025271	2	NUT, #10-24 Hex Nylon Lock
10	5021734	1	SWITCH, Actuator
11	5020927	1	SWITCH, Ignition, Complete (Includes Ref No. 12 - 14)
12	5022791	1	PLASTIC NUT
13	5022790	1	COVER
14	5022789	1	KEY, Ignition, Molded Set
15	5022180	1	SWITCH, PTO

Footnotes

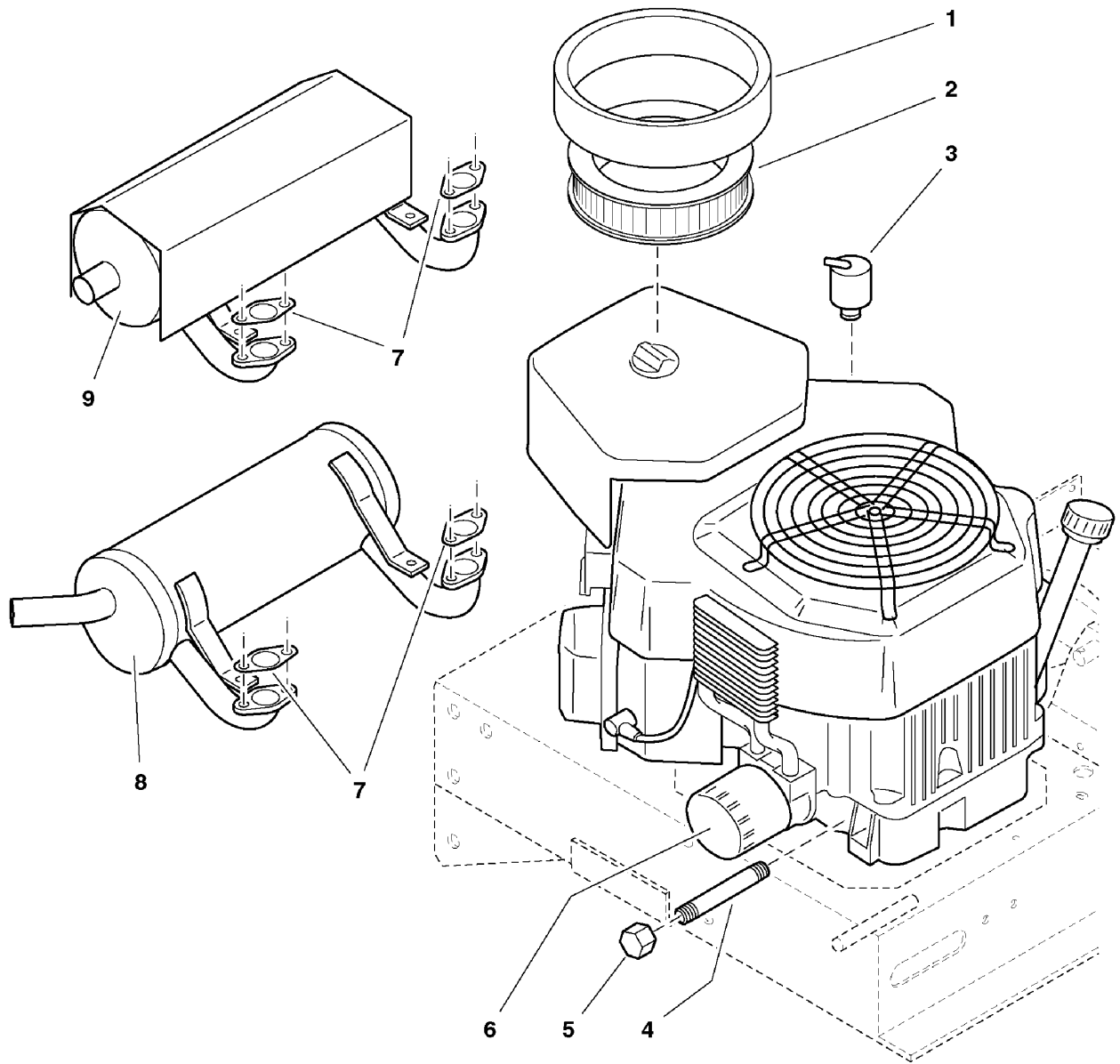
The above parts group applies to the following Mfg. Nos.:

H2220K (S/N: 7671 & Above)

Engine Accessories Group - Kohler

094EACK0

NOTE: Unless noted otherwise,
use the standard hardware torque
specification chart.



The above parts group applies to the following Mfg. Nos.:
H2220K (S/N: 7671 & Above)

Engine Accessories Group - Kohler

REF NO.	PART NO.	QTY.	DESCRIPTION
1	5020922X4	1	PRE-CLEANER (45 083 01)
2	5020922X2	1	AIR FILTER (45 083 02)
3	-	1	BREATHER (24 755 20)
4	5021707	1	NIPPLE, 3/8 NPT X 4-1/2
5	5021466	1	CAP, 3/8 NPT
6	5021144X1	1	OIL FILTER (12 050 01)
7	-	2	GASKET (24 041 02)
8	5022161	1	MUFFLER, Kohler (22HP & 23HP models)
9	-	1	MUFFLER (24 068 20) (20HP model only)

Footnotes

- See you local Kohler engine dealer for service parts.
- See your local Kohler engine dealer for service parts.

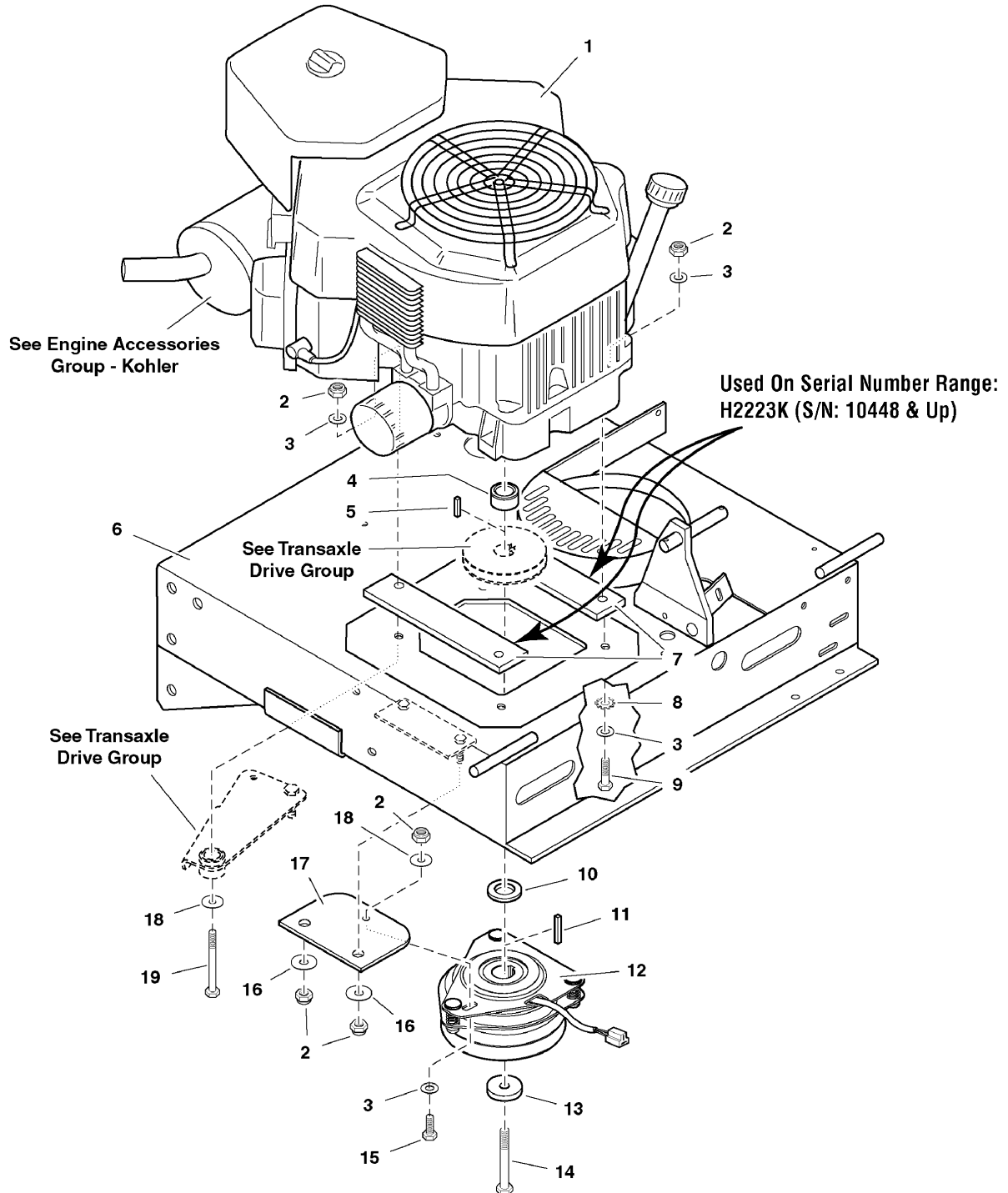
The above parts group applies to the following Mfg. Nos.:

H2220K (S/N: 7671 & Above)

Engine & PTO Group - Kohler

094ENGK

NOTE: Unless noted otherwise,
use the standard hardware torque
specification chart.



The above parts group applies to the following Mfg. Nos.:

H2220K (S/N: 7671 & Above)

Engine & PTO Group - Kohler

REF NO.	PART NO.	QTY.	DESCRIPTION
1	21531	1	ENGINE, 20HP Kohler (Model CV20S)
1	5022034	1	ENGINE, 22HP Kohler (Model CV22S)
1	5022312	1	ENGINE, 23HP Kohler (Model CV23S) (H2223K, S/N: 7671 - 10447)
1	5022889	1	ENGINE, 23HP Kohler (Model CV23S) (H2223K, S/N: 10448 & above)
2	5025057	7	NUT, 5/16-18 Hex Nylon Lock
3	5025155	9	WASHER, 5/16" SAE
4	5048136	1	SPACER, 1.13 x 1.75 x 1.25 (H2223K S/N: 10448 & above)
4	5042840	1	SPACER, 1.13 X 1.75 X .88 (H2223K, S/N: 7671 - 10447)
5	5050407X10	1	KEY, 1/4 SQ. X 5/8
6	5031114B	1	ENGINE DECK
7	5045352B	2	SPACER, Engine Block (H2223K, S/N: 10448 & above)
8	5025188	3	WASHER, 5/16" Internal Tooth Lock
9	5025011X18	3	BOLT, 5/16-18 x 2-1/4 (H2223K, S/N: 10448 & above)
9	5025011X14	3	BOLT, 5/16-18 x 1-3/4 (H2223K, S/N: 7671 - 10447)
10	5047033	1	SPACER, 1.13 x 1.75 x 1.03 (Used on H2223K, S/N: 11472 & above)
10	5048135	1	SPACER, 1.13 x 1.75 x .62 (S/N: 10448 thru 11471)
10	5042304	1	SPACER, 1.13 X 2.00 X .37 (H2223K, S/N: 7671 - 10447)
11	5050407X18	1	KEY, 1/4 SQ. x 2-1/4 (Used on H2223K, S/N: 11472 & above)
11	5050407X1	1	KEY, 1/4 SQ. X 1 (S/N: 11471 & below)
12	5023232	1	ELECTRIC CLUTCH (Used on H2223K, S/N: 11472 & above)
12	5021145	1	CLUTCH, Electric, 1-1/8" Shaft (H2223K, S/N: 11471 & below)
13	5042132	1	SPACER, .45 x 1.62 x .37
14	5045289	1	CRANKSHAFT BOLT, 7/16 x 2-1/2 (H2223K, S/N: 10448 & above)
14	5043626	1	CRANKSHAFT BOLT, 7/16 x 3 (H2223K, S/N: 7671 - 10447)
15	5025011X6	1	BOLT, 5/16-18 x 3/4
16	5044617	2	WASHER, Clutch Anchor
17	5043636	1	CLUTCH ANCHOR PAD
18	5025164	2	WASHER, 5/16" Fender
19	25011-26	1	BOLT, 5/16-18 x 3-1/4 (H2223K, S/N: 10448 & above)
19	5025011X24	1	BOLT, 5/16-18 x 3 (H2223K, S/N: 7671 - 10447)

Footnotes

- See your local Kohler engine dealer for parts & service.

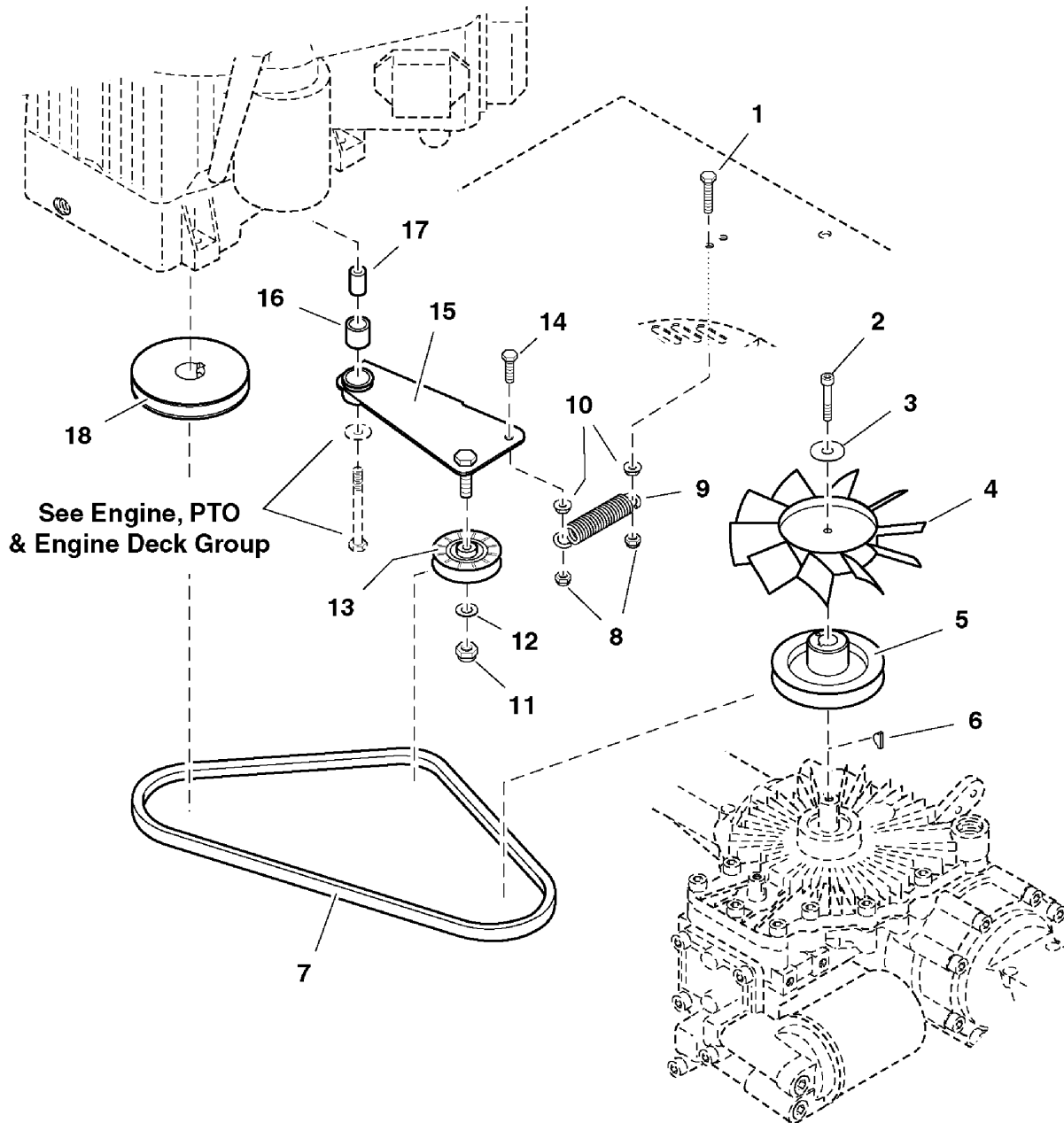
The above parts group applies to the following Mfg. Nos.:

H2220K (S/N: 7671 & Above)

Transaxle Drive Group

NOTE: Unless noted otherwise,
use the standard hardware torque
specification chart.

094TDR0



The above parts group applies to the following Mfg. Nos.:
H2220K (S/N: 7671 & Above)

Transaxle Drive Group

REF NO.	PART NO.	QTY.	DESCRIPTION
1	5025055X14	1	BOLT, 5/16-18 x 1-3/4 TFL
2	5025268	1	BOLT, Allen Head, 1/4-20 x 1-3/4
3	5044577	1	WASHER, .265 x 1.50 x .109
4	5021081	1	FAN
5	5043647	1	PULLEY, Transmission Input
6	5021839	1	KEY, Hi-Pro Woodruff
7	5021105	1	BELT, A-Section
8	5025057	2	NUT, 5/16-18 Hex Nylon Lock
9	5020807	1	SPRING, Extension
10	5025139	2	NUT, 5/16-18 Hex Large Serrated Flange
11	5025096	1	NUT, 3/8-16 Hex Nylon Lock
12	5025156	1	WASHER, 3/8" SAE
13	5043627	1	IDLER PULLEY
14	5025055X10	1	BOLT, 5/16-18 x 1-1/4 TFL
15	5042169B	1	IDLER ARM ASSEMBLY, Complete
16	5020876B	1	BUSHING, Brass
17	5042134	1	SPACER, .32 x .75 x 1.06
18	5042129	1	PULLEY, Crankshaft (Briggs)
18	5042302	1	PULLEY, Crankshaft Kohler

Footnotes

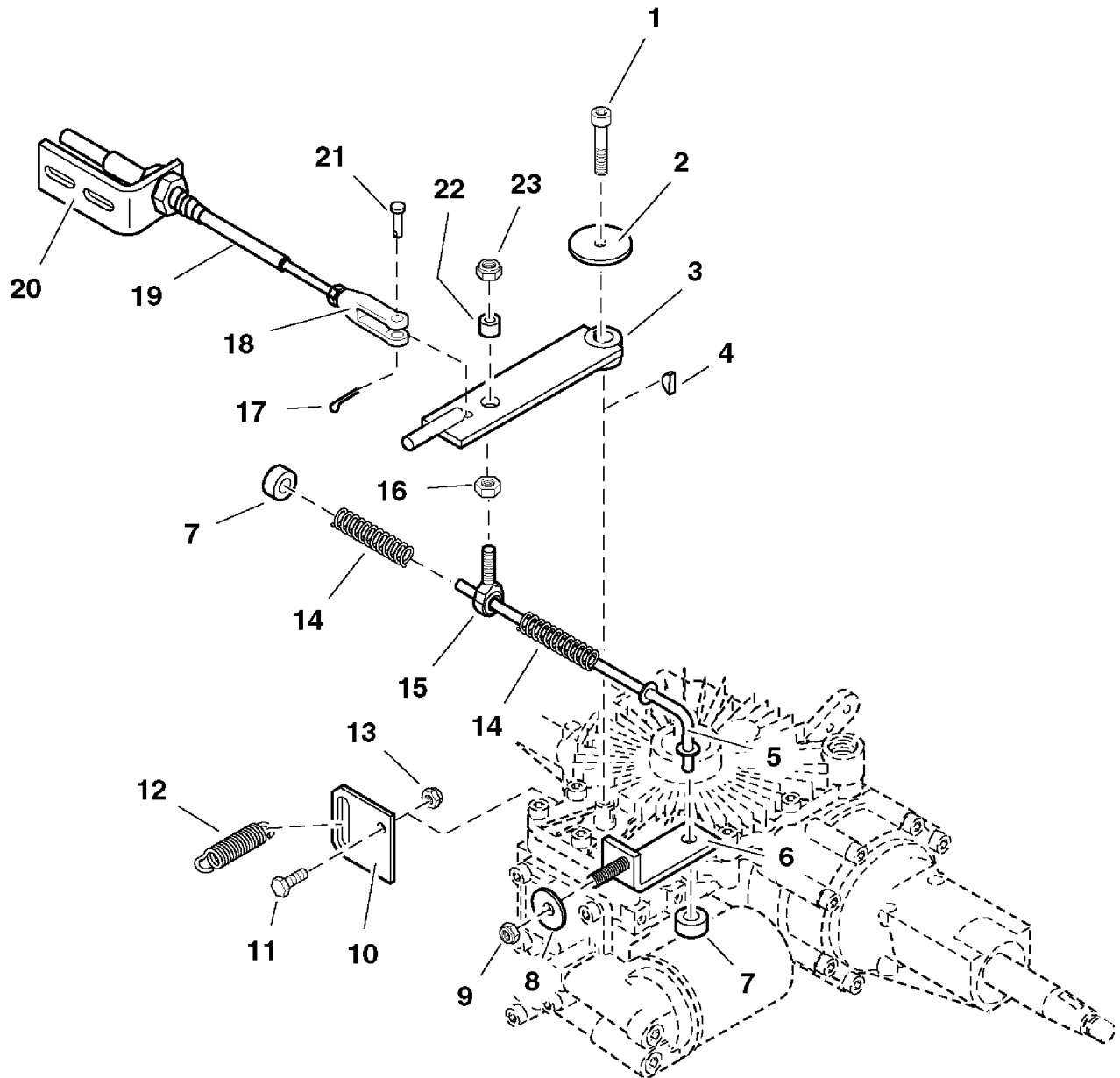
The above parts group applies to the following Mfg. Nos.:

H2220K (S/N: 7671 & Above)

Motion Control Group - Engine Deck

094MCGE0

NOTE: Unless noted otherwise,
use the standard hardware torque
specification chart.



The above parts group applies to the following Mfg. Nos.:
H2220K (S/N: 7671 & Above)

Motion Control Group - Engine Deck

REF NO.	PART NO.	QTY.	DESCRIPTION
1	5025269	1	BOLT, Allen Head, 1/4-20 x 1-1/2
2	5044577	1	WASHER, .265 x 1.50 x .109
3	5042319B	1	TRANSMISSION CONTROL ARM
4	5020149	1	KEY, #3 Woodruff
5	5042329	1	NEUTRAL SPRING ROD
6	5042328B	1	Spring Anchor
7	5020047	2	COLLAR, 5/16" Set
8	5025164	1	WASHER, 5/16" Fender
9	5025057	1	NUT, 5/16-18 Hex Nylon Lock
10	5043671B	1	DUMP VALVE LEVER
11	5025010X8	1	BOLT, 1/4-20 x 1
12	5020639	1	SPRING, Extension
13	5025095	1	NUT, 1/4-20 Hex Nylon Lock
14	5021102	1	SPRING, Compression
15	5021124	1	BALL JOINT, 3/8-24 Male
16	5025035	1	NUT, 3/8-24 Hex
17	25204-4	1	COTTER PIN, 1/16" x 1/2"
18	5021104	1	CLEVIS, 1/4-28, Plastic
19	5021089	1	CABLE, Speed Control
20	5042170B	1	CABLE BRACKET
21	5025212X8	1	CLEVIS PIN, 1/4 x 1
22	5041930	1	SPACER, .38 x .50 x .27
23	5025097	1	NUT, 3/8-24 Hex Nylon Lock

Footnotes

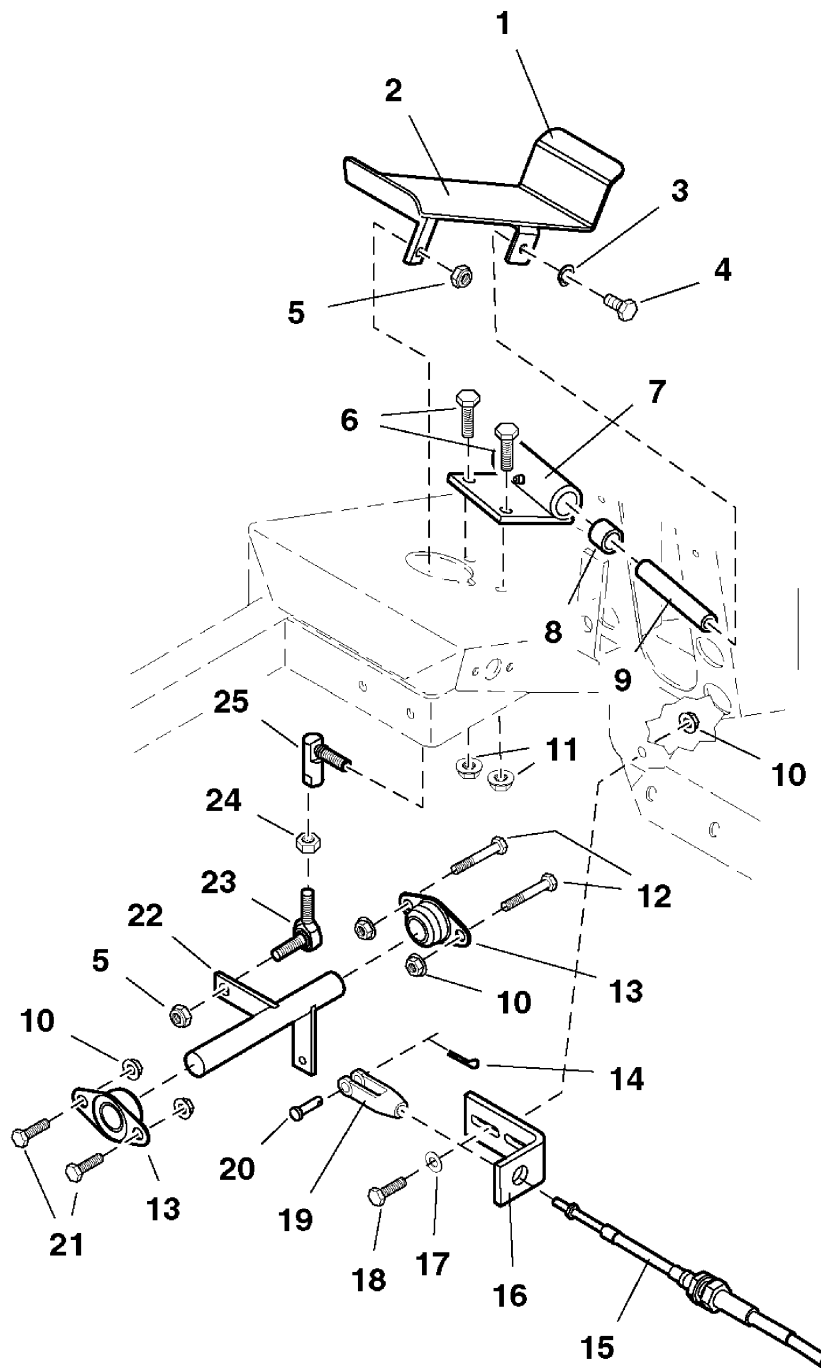
The above parts group applies to the following Mfg. Nos.:

H2220K (S/N: 7671 & Above)

Motion Control Group - Trailer

094MCGT0

NOTE: Unless noted otherwise,
use the standard hardware torque
specification chart.



The above parts group applies to the following Mfg. Nos.:
H2220K (S/N: 7671 & Above)

Motion Control Group - Trailer

REF NO.	PART NO.	QTY.	DESCRIPTION
1	5042185B	1	FOOT CONTROL PEDAL
2	5042281	1	SAFETY WALK
3	5025171	2	WASHER, 3/8" Lock
4	5025013X6	2	BOLT, 3/8-16 x 3/4
5	5025097	2	NUT, 3/8-24 Hex Nylon Lock
6	5025013X8	2	BOLT, 3/8-16 x 1
7	5042137B	1	FOOT PEDAL PIVOT MOUNT, Complete
8	5020875P	2	BUSHING, Plastic
9	5042147	1	SHAFT, Pedal Pivot
10	5025139	6	NUT, 5/16-18 Hex Large Serrated Flange
11	5025128	2	NUT, 3/8-16 Hex Serrated Flange
12	5025011X20	2	BOLT, 5/16-18 x 2-1/2
13	5021098	2	BEARING, Flange
14	25204-4	1	COTTER PIN, 1/16" x 1/2"
15	5021089	1	CABLE, Speed Control
16	5042170B	1	CABLE BRACKET
17	5025155	2	WASHER, 5/16" SAE
18	5025011X8	2	BOLT, 5/16-18 x 1
19	5021104	1	CLEVIS, 1/4-28, Plastic
20	5025212X8	1	CLEVIS PIN, 1/4 x 1
21	5025011X6	2	BOLT, 5/16-18 x 3/4
22	5042184B	1	BELL CRANK
23	5021049	1	BALL JOINT, 3/8-24 Male, Studded
24	5025035	1	NUT, 3/8-24 Hex
25	5020805	1	BALL JOINT, 3/8" Female Studded

Footnotes

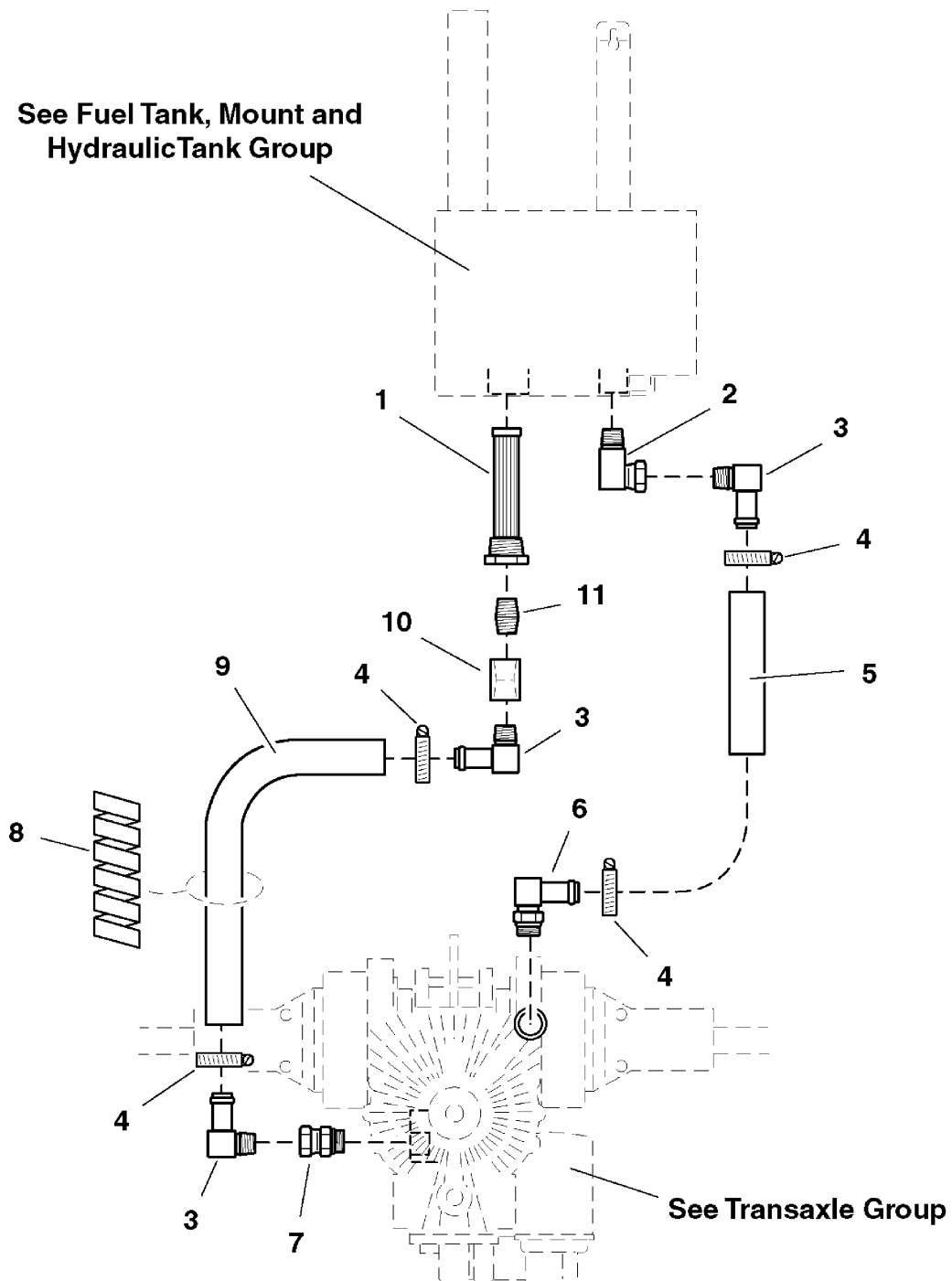
The above parts group applies to the following Mfg. Nos.:

H2220K (S/N: 7671 & Above)

Hydraulic Group

094HYD0

NOTE: Unless noted otherwise,
use the standard hardware torque
specification chart.



The above parts group applies to the following Mfg. Nos.:
H2220K (S/N: 7671 & Above)

Hydraulic Group

REF NO.	PART NO.	QTY.	DESCRIPTION
1	5021082	1	STRAINER
2	5021132	1	FITTING, 1/2 NPT Swivel, 90 Deg.
3	5021160	3	FITTING, 90 Degrees 1/2" NPT
4	5021164	4	CLAMP, #10 Hose
5	5050836X4P875	1	Transmission Inlet Hose, 4.875" Long
6	5021161	1	FITTING, 90 Degrees 7/8" O-Ring
7	5021166	1	FITTING, 7/8" O-Ring Straight Swivel
8	5050837X12	1	PROTECTIVE COIL, 12"
9	5050836X14P75	1	HOSE, Transmission Return, 14.75"
10	5020985	1	COUPLER, 1/2" NPT
11	5021163	1	NIPPLE, 1/2" NPT Close

Footnotes

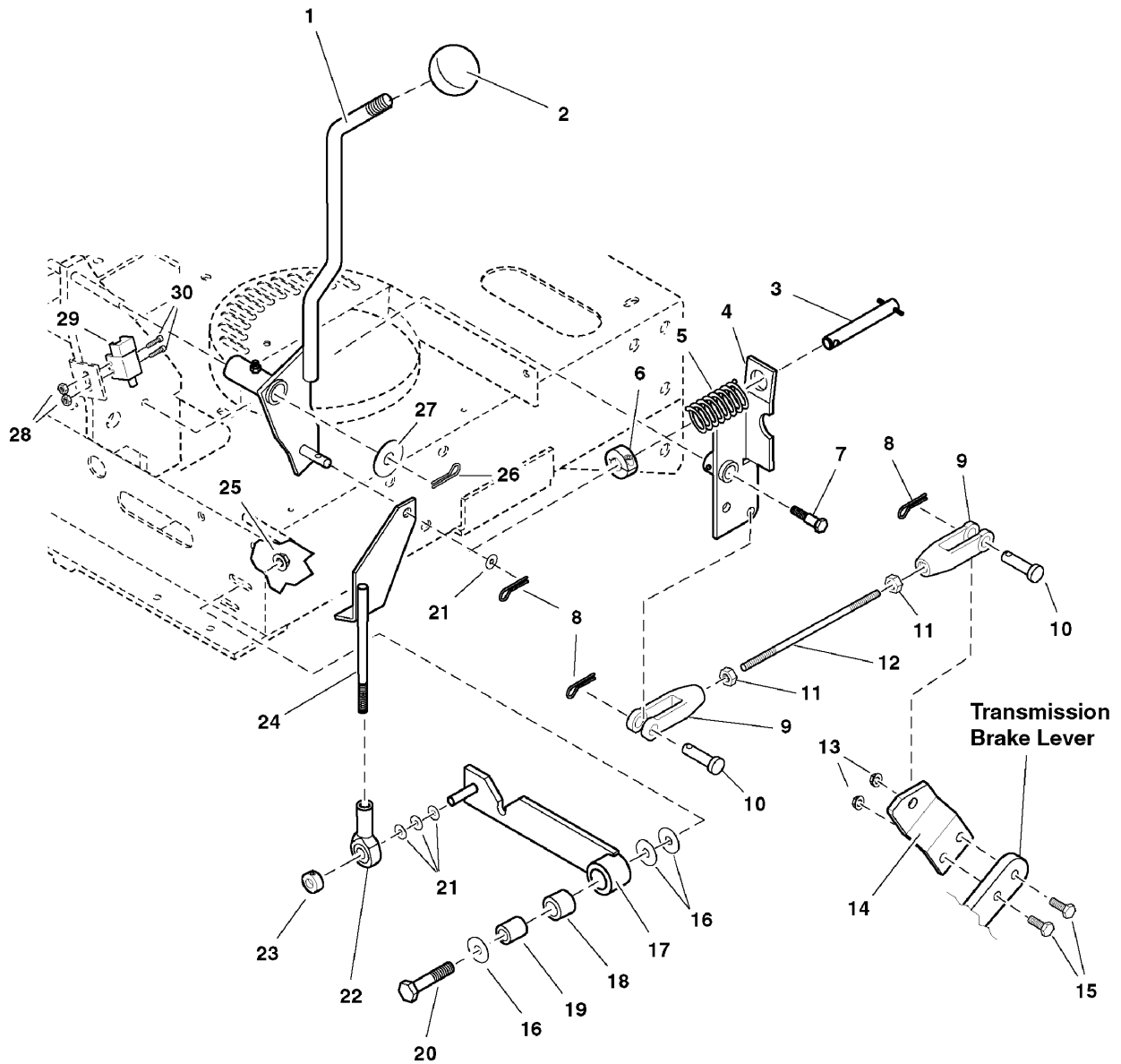
The above parts group applies to the following Mfg. Nos.:

H2220K (S/N: 7671 & Above)

Parking Brake Group

094PBR0

NOTE: Unless noted otherwise,
use the standard hardware torque
specification chart.



The above parts group applies to the following Mfg. Nos.:
H2220K (S/N: 7671 & Above)

Parking Brake Group

REF NO.	PART NO.	QTY.	DESCRIPTION
1	5030919B	1	PARKING BRAKE LEVER
2	5021733	1	KNOB
3	5043982	1	SPRING BAR ASSEMBLY
4	5043971B	1	BRAKE ROCKER ARM
5	5021667	1	SPRING, Compression
6	5010477	1	COLLAR, 5/8" Set
7	5025223	1	SHOULDER BOLT, 1/2 x 1
8	5025201X6	3	COTTER PIN, 3/32" x 3/4"
9	5020979	2	CLEVIS, 5/16-24, Plastic
10	5025213X8	2	CLEVIS PIN, 5/16 x 1
11	5025033	2	NUT, 5/16-24 Hex
12	5043976	1	BRAKE LINKAGE ROD
13	5025095	2	NUT, 1/4-20 Hex Nylon Lock
14	5043674B	1	BRAKE LEVER
15	5025010X8	2	BOLT, 1/4-20 x 1
16	5025164	3	WASHER, 5/16" Fender
17	5042317B	1	NEUTRAL LOCK LEVER, Complete (Includes Ref No. 19)
18	5020876B	1	BUSHING, Brass
19	5042134	1	SPACER, .32 x .75 x 1.06
20	5025011X16	1	BOLT, 5/16-18 x 2
21	5025155	4	WASHER, 5/16" SAE
22	5021146	1	BALL JOINT, 5/16-24 Female
23	5020047	1	COLLAR, 5/16" Set
24	5043972B	1	BRAKE LOCK LINK
25	5025139	1	NUT, 5/16-18 Hex Large Serrated Flange
26	5025203X10	1	COTTER PIN, 1/8" X 1-1/4"
27	5025281	1	WASHER, 5/8" SAE
28	25029	2	NUT, #10-24 Hex
29	5022095	1	SWITCH, Plunger, NO/NC
30	25179-6	2	SCREW, #10-24 x 3/4

Footnotes

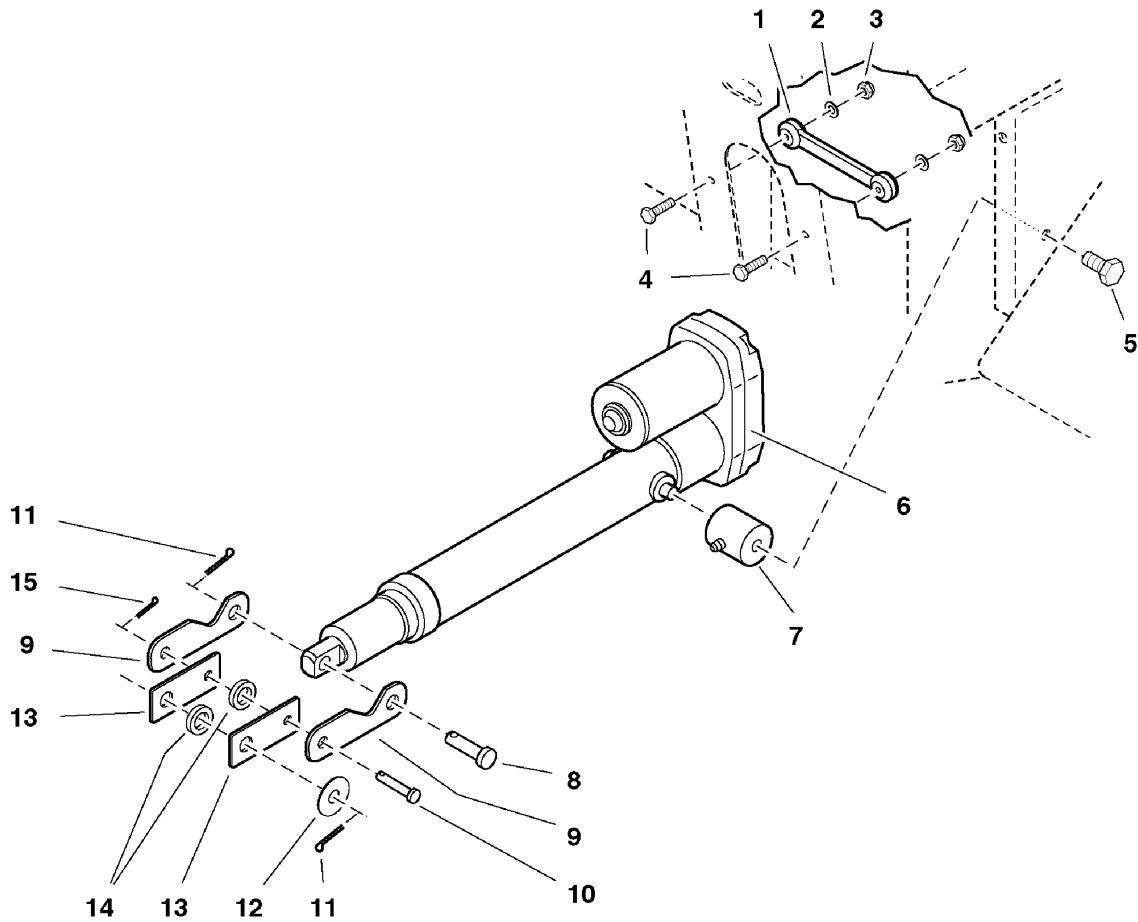
The above parts group applies to the following Mfg. Nos.:

H2220K (S/N: 7671 & Above)

Deck Lift Group

094DLT0

NOTE: Unless noted otherwise,
use the standard hardware torque
specification chart.



The above parts group applies to the following Mfg. Nos.:
H2220K (S/N: 7671 & Above)

Deck Lift Group

REF NO.	PART NO.	QTY.	DESCRIPTION
1	5020959	1	RUBBER STRAP
2	5025154	2	WASHER, 1/4" SAE
3	5025095	2	NUT, 1/4-20 Hex Nylon Lock
4	5025010X8	2	BOLT, 1/4-20 x 1
5	5025013X8	2	BOLT, 3/8-16 x 1
6	5043536	1	ELECTRIC ACTUATOR
7	5044082	2	ACTUATOR MOUNT
8	5043688	1	PIN, Clevis
9	5043677	2	ACTUATOR LINK, Lower
10	5025214X8	1	CLEVIS PIN, 3/8 x 1
11	5025203X10	2	COTTER PIN, 1/8" X 1-1/4"
12	5025281	1	WASHER, 5/8" SAE
13	5044618	2	ACTUATOR LINK, Upper
14	5041477	2	SPACER, .63 x 1.06 x .23
15	5025201X6	1	COTTER PIN, 3/32" x 3/4"

Footnotes

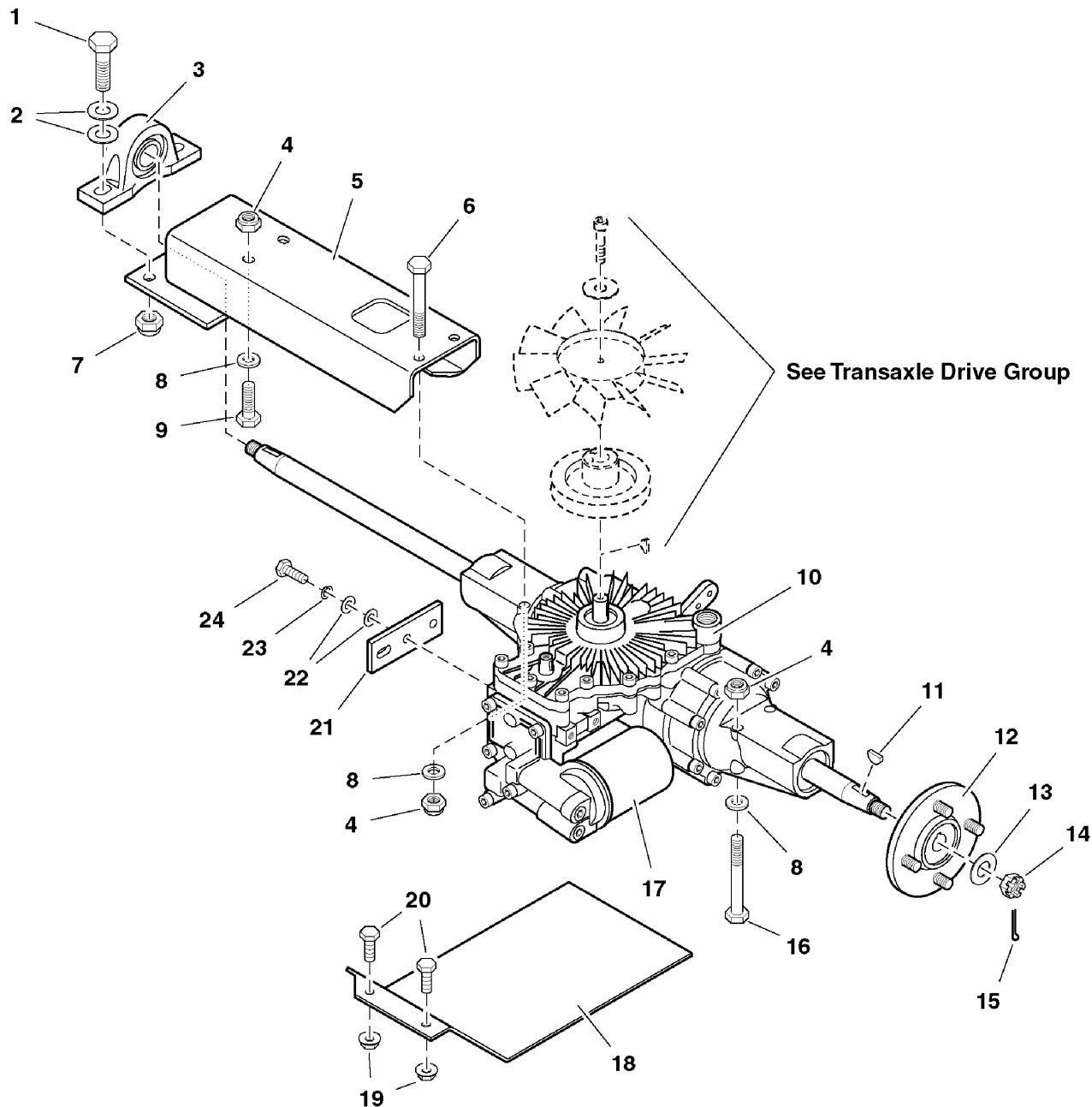
The above parts group applies to the following Mfg. Nos.:

H2220K (S/N: 7671 & Above)

Transaxle & Mount Group

NOTE: Unless noted otherwise,
use the standard hardware torque
specification chart.

094TDN0



The above parts group applies to the following Mfg. Nos.:
H2220K (S/N: 7671 & Above)

Transaxle & Mount Group

REF NO.	PART NO.	QTY.	DESCRIPTION
1	5025016X14	2	BOLT, 7/16-20 X 1-3/4
2	5025157	4	WASHER, 7/16" SAE
3	5010093	1	BEARING, 1" Pillow Block
4	5025096	6	NUT, 3/8-16 Hex Nylon Lock
5	5043675B	1	AXLE SUPPORT
6	5025013X24	2	BOLT, 3/8-16 x 3
7	5025094	2	NUT, 7/16-20 Hex Nylon Lock
8	5025293	6	WASHER, 3/8" GD9
9	5025013X10	2	BOLT, 3/8-16 x 1-1/4
10	5022164	1	HYDROSTATIC TRANSAXLE, Complete (Includes Ref No. 11,14 & 15)
11	5022184	2	KEY, Woodruff
12	5022165	2	HUB, 4-Bolt Tapered
13	5025160	2	WASHER, 3/4" SAE
14	5022183	2	NUT, Hex Slotted
15	5025203X10	2	COTTER PIN, 1/8" X 1-1/4"
16	5025013X28	2	BOLT, 3/8-16 x 3-1/2
17	5021068X1	1	FILTER, Transmission Oil
18	5044616B	1	SKID PLATE
19	5025139	2	NUT, 5/16-18 Hex Large Serrated Flange
20	5025011X6	2	BOLT, 5/16-18 x 3/4
21	5042177B	1	BRACKET, Transmission Support
22	5025155	4	WASHER, 5/16" SAE
23	5025170	2	WASHER, 5/16" Lock
24	5025011X8	2	BOLT, 5/16-18 x 1

Footnotes

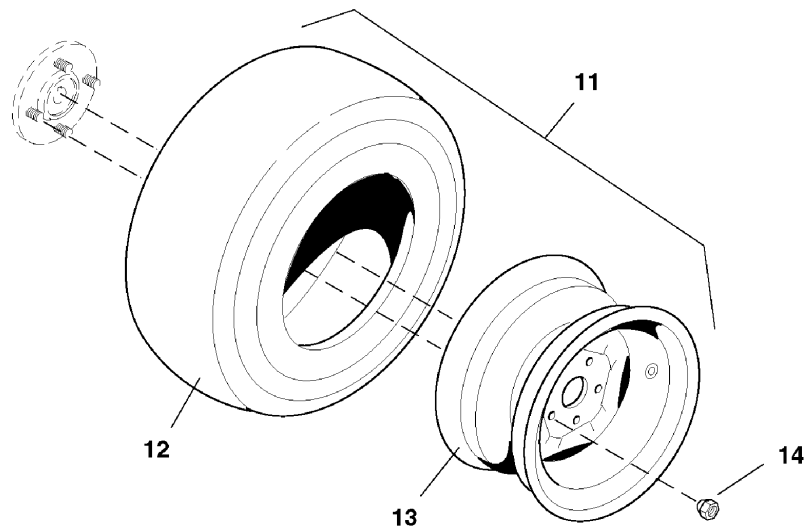
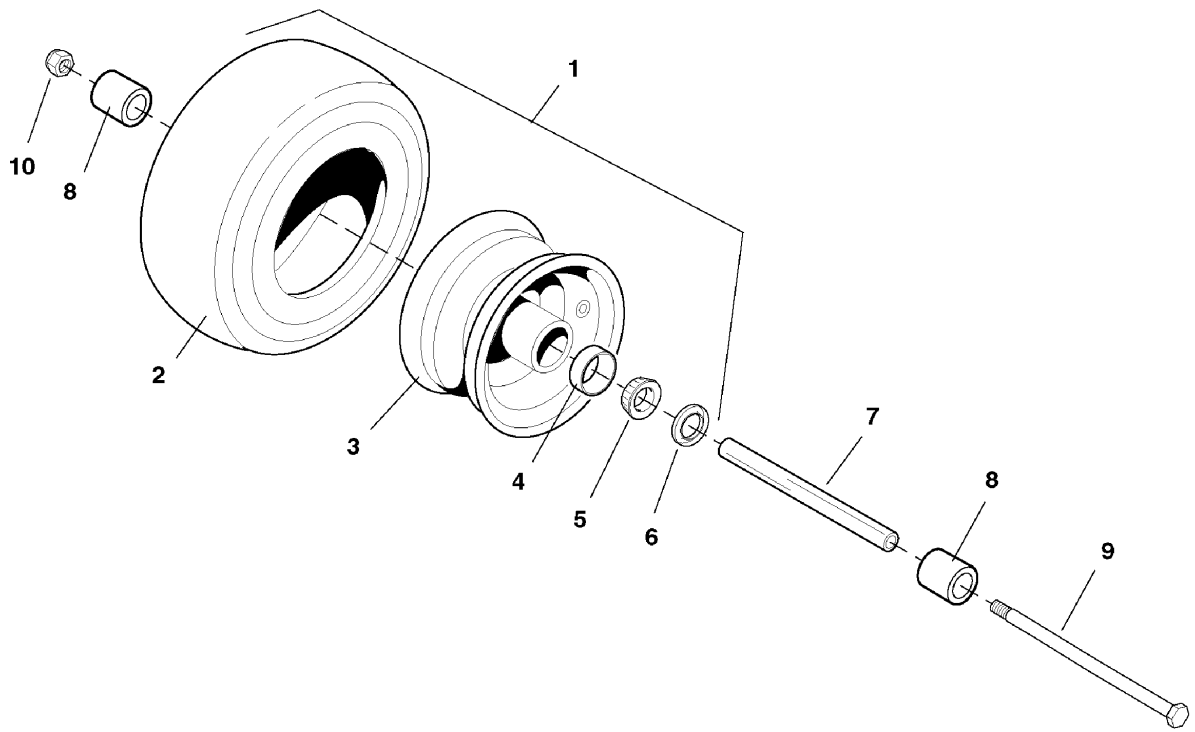
The above parts group applies to the following Mfg. Nos.:

H2220K (S/N: 7671 & Above)

Tire & Wheel Group

094WHL0

NOTE: Unless noted otherwise,
use the standard hardware torque
specification chart.



The above parts group applies to the following Mfg. Nos.:
H2220K (S/N: 7671 & Above)

Tire & Wheel Group

REF NO.	PART NO.	QTY.	DESCRIPTION
1	5021150S	1	WHEEL & TIRE ASSEMBLY, 18 x 7.5 x 8, Silver, Complete (Includes Ref No. 2 - 6)
2	5021215	1	TIRE, Rear, 18 x 7.5 x 8
3	21216S	1	WHEEL ASSEMBLY, 8 x 3.75, Silver, Complete (Includes Ref No. 4 - 6)
4	5020883	2	BEARING CUP
5	5020884	2	BEARING, Tapered Roller
6	5020885	2	GREASE SEAL
7	5042314	1	STEERING TIRE AXLE
8	5042315	2	SPACER, 1.01 X 1.25 X 2.06
9	5025019X76	1	BOLT, 5/8-11 x 9-1/2
10	5025103	1	NUT, 5/8-11 Hex Side Lock
11	5021094S	2	WHEEL & TIRE ASSEMBLY, 20 x 10 x 8, Complete (Includes Ref No. 12 & 13)
12	5021204	2	TIRE, 20 x 10 x 8
13	5021205S	2	WHEEL ASSEMBLY, 8 x 7
14	5020601	8	LUG NUT, 1/2-20

Footnotes

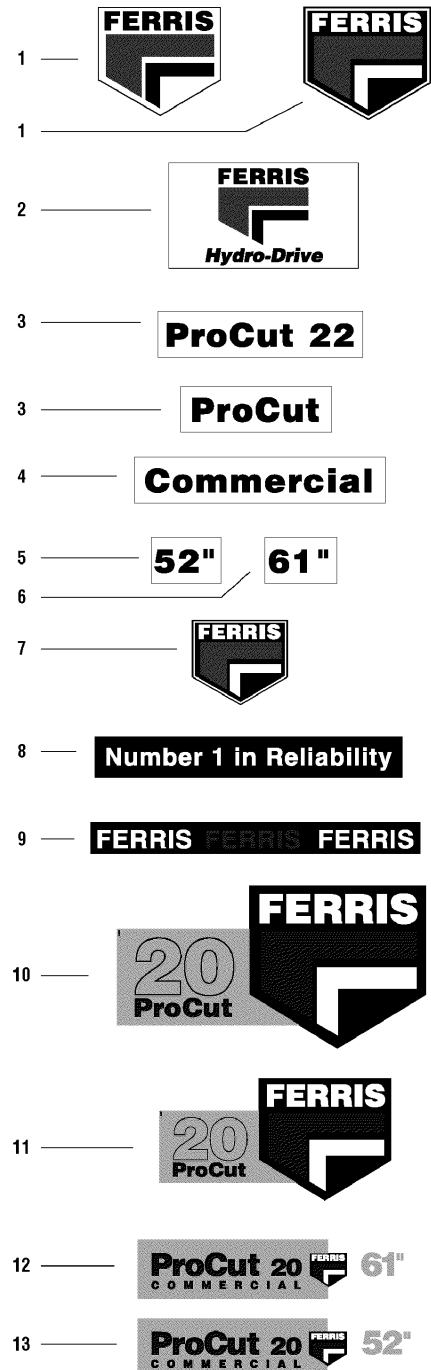
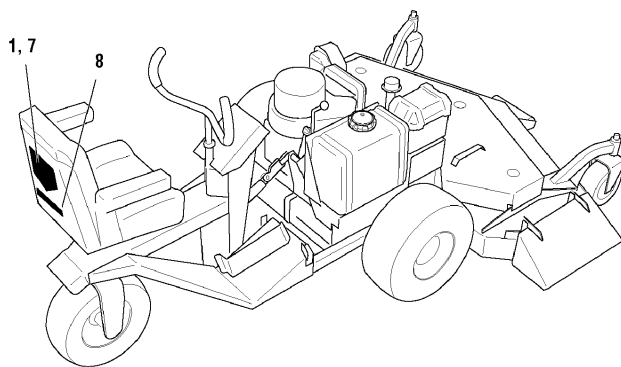
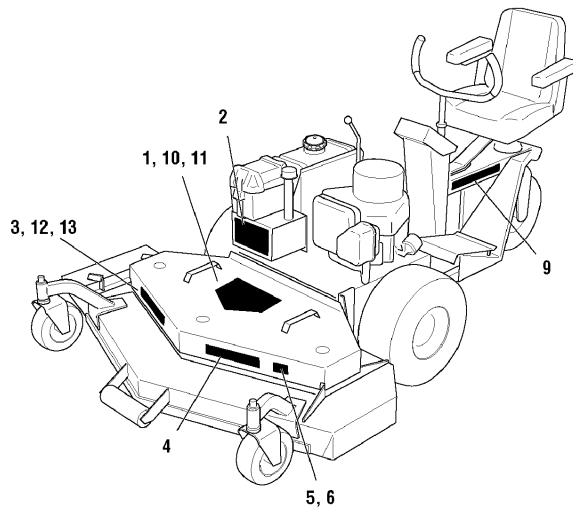
The above parts group applies to the following Mfg. Nos.:

H2220K (S/N: 7671 & Above)

Decal Group - Brand & Model

NOTE: Unless noted otherwise, use the standard hardware torque specification chart.

094DCLB



The above parts group applies to the following Mfg. Nos.:
H2220K (S/N: 7671 & Above)

Decal Group - Brand & Model

REF NO.	PART NO.	QTY.	DESCRIPTION
1	5020852	2	DECAL, Ferris Logo, 10-3/4"
1	5020852	1	DECAL, Ferris Logo, 10-3/4"
2	5021126	1	DECAL, Hydro Drive
3	5022293	1	DECAL, ProCut 22
3	5021300	1	DECAL, ProCut
4	5020846	1	DECAL, Commercial
5	5021299	1	DECAL, 52"
6	5021302	1	DECAL, 61"
7	5022227	1	DECAL, Ferris Logo, 6-3/8"
8	5022229	1	DECAL, Number One In Reliability
9	5022240	1	DECAL, Ferris Text
10	5022540	1	DECAL, Ferris Logo (61" deck)
11	5022538	1	DECAL, Ferris Logo (52" deck)
12	5022541	1	DECAL, ProCut 2061
13	5022539	1	DECAL ProCut 2052

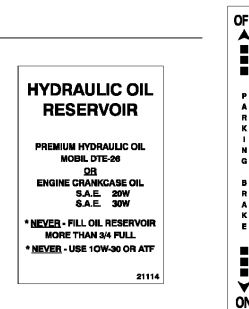
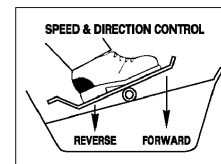
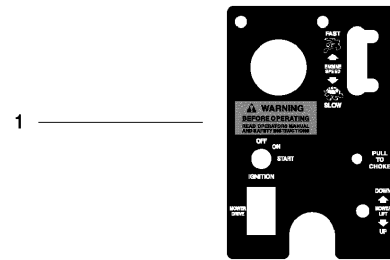
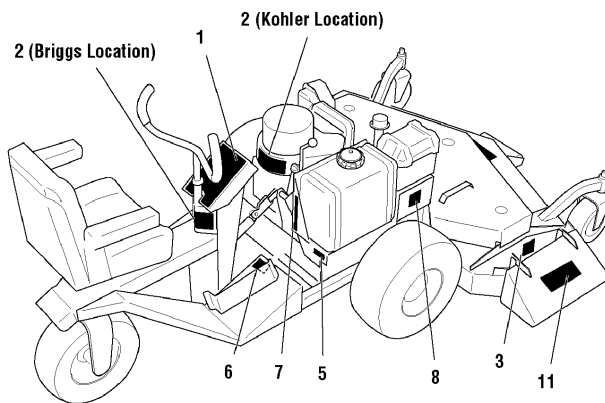
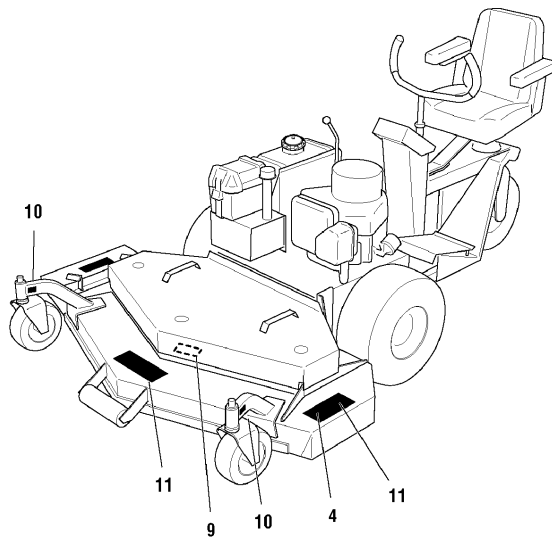
Footnotes

The above parts group applies to the following Mfg. Nos.:
H2220K (S/N: 7671 & Above)

Decal Group - Safety & Operation

NOTE: Unless noted otherwise, use the standard hardware torque specification chart.

094DCLs



The above parts group applies to the following Mfg. Nos.: H2220K (S/N: 7671 & Above)

Decal Group - Safety & Operation

REF NO.	PART NO.	QTY.	DESCRIPTION
1	5045554	1	DECAL, Instrument Panel
2	5045555	1	DECAL, Danger/Warning
3	1704277	1	DECAL, Danger (Chute In Place)
4	1704276	1	DECAL, Danger (Hand Under Deck)
5	5045558	1	DECAL, Operation
6	5045552	1	DECAL, Speed/Direction Control
7	5045553	1	DECAL, Parking Brake
8	5021114	1	DECAL, Reservoir Hydraulic Oil
9	5020337	1	DECAL, Warning located under guard
10	5021036	2	DECAL, Grease Daily
11	5020851	1	DECAL, Danger
12	-	2	TAG, MODEL/SERIAL (Not Serviced) (Not a serviceable part)
13	-	1	DECAL, Patent Number (Not Serviced) (Not a serviceable part)
14	-	1	DECAL, Noise Level (Export Models) (Not Serviced) (Not a serviceable part)

Footnotes

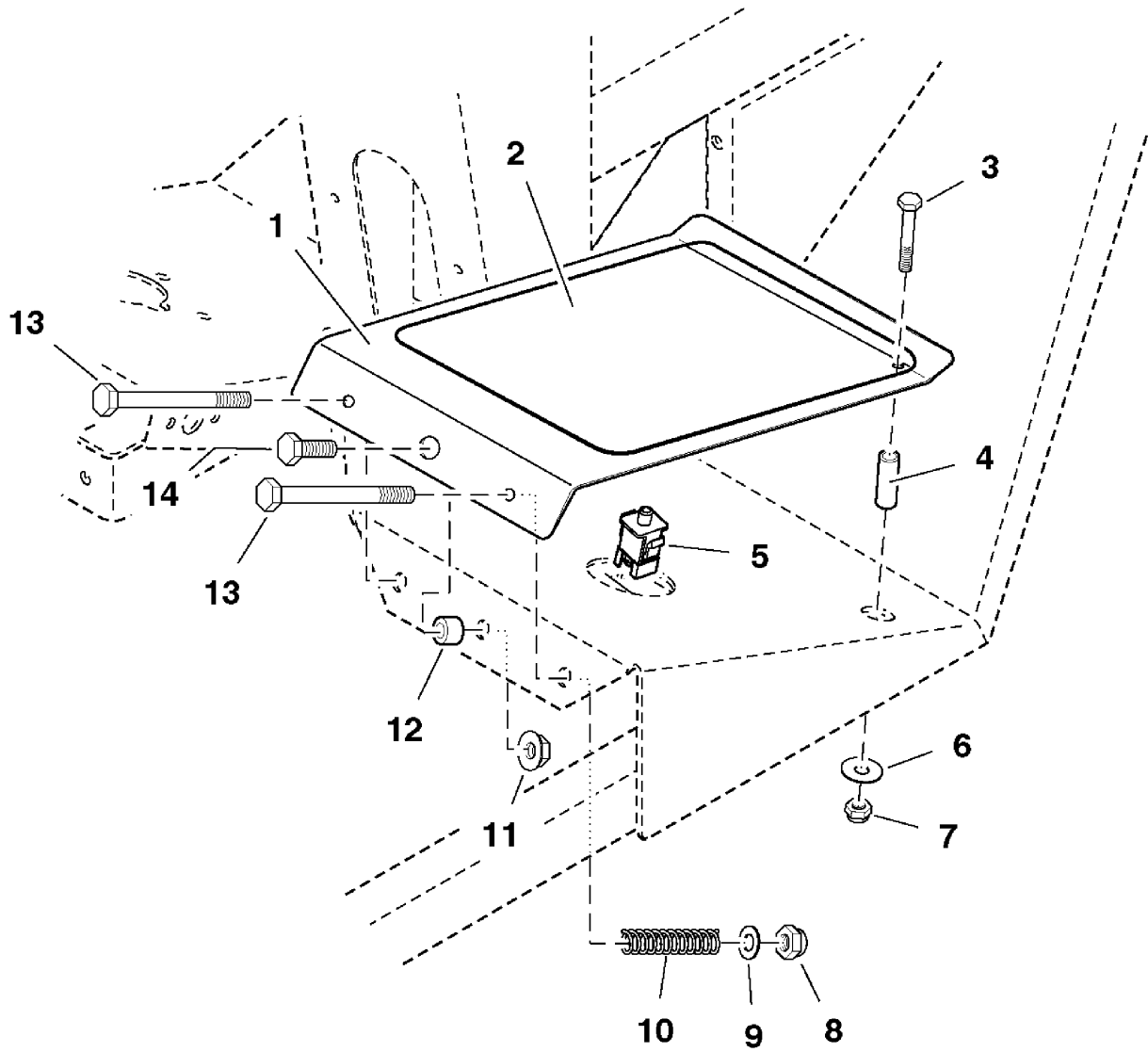
The above parts group applies to the following Mfg. Nos.:

H2220K (S/N: 7671 & Above)

Operator Presence Group

NOTE: Unless noted otherwise,
use the standard hardware torque
specification chart.

0940PS0



The above parts group applies to the following Mfg. Nos.:
H2220K (S/N: 7671 & Above)

Operator Presence Group

REF NO.	PART NO.	QTY.	DESCRIPTION
1	5045196B	1	OPERATOR PRESENCE PLATE
2	5022200	1	SAFETY WALK
3	5025011X16	1	BOLT, 5/16-18 x 2
4	5043296	1	BUSHING, Brass
5	5022198	1	SWITCH, Plunger, Snap-In, NO/NO
6	5025164	1	WASHER, 5/16" Fender
7	5025057	1	NUT, 5/16-18 Hex Nylon Lock
8	5025096	2	NUT, 3/8-16 Hex Nylon Lock
9	5025156	2	WASHER, 3/8" SAE
10	5021102	2	SPRING, Compression
11	5025128	1	NUT, 3/8-16 Hex Serrated Flange
12	5020880	1	INSERT, Bearing
13	5025013X28	2	BOLT, 3/8-16 x 3-1/2
14	5025013X8	1	BOLT, 3/8-16 x 1

Footnotes

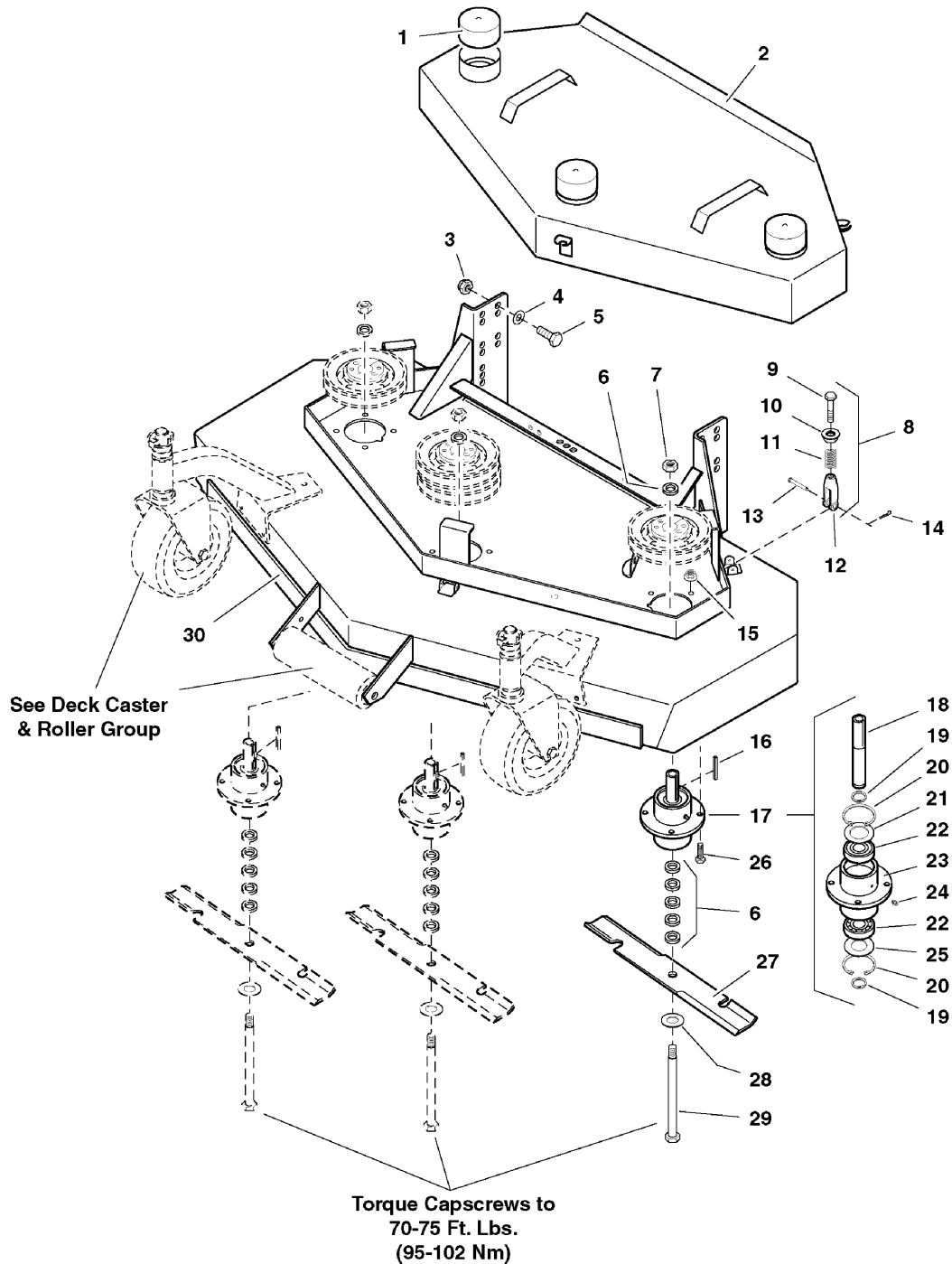
The above parts group applies to the following Mfg. Nos.:

H2220K (S/N: 7671 & Above)

52" Mower Deck - Housing, Covers, Spindles & Blades - Rear Discharge

0945HCR0

NOTE: Unless noted otherwise,
use the standard hardware torque
specification chart.



The above parts group applies to the following Mfg. Nos.:
R52R (CE) (S/N: 7671 & Above)

52" Mower Deck - Housing, Covers, Spindles & Blades - Rear Discharge

REF NO.	PART NO.	QTY.	DESCRIPTION
1	5021674	3	VINYL CAP
2	45280	1	SPINDLE COVER
3	5025098	8	NUT, 1/2-20 Hex Nylon Lock
4	5025158	8	WASHER, 1/2" SAE
5	5025018X10	8	BOLT, 1/2-20 x 1-1/4
6	5041477	18	SPACER, .63 x 1.06 x .23
7	5025040	3	NUT, 5/8-11 Hex
8	5060078	3	GUARD HOLD DOWN ASSEMBLY (Includes Ref No. 9-12)
9	5025011X16	3	BOLT, 5/16-18 x 2
10	5025128	3	NUT, 3/8-16 Hex Serrated Flange
11	5045298	3	SPRING, Guard Hold Down
12	5020979	3	CLEVIS, 5/16-24, Plastic
13	5020841X4	3	CLEVIS PIN
14	5020841X5	3	COTTER PIN
15	5025139	12	NUT, 5/16-18 Hex Large Serrated Flange
16	5050407X9	3	KEY, 1/4 SQ. X 2-1/2
17	5030301	3	SPINDLE ASSEMBLY, Complete
18	5041480	3	SPINDLE SHAFT
19	5020864	6	SNAP RING, External
20	5020866	6	SNAP RING, Internal
21	5041653	3	SPINDLE WASHER, Top
22	5020828	6	BEARING
23	5030293	3	SPINDLE HOUSING
24	5020095	3	GREASE FITTING
25	5041672	3	SPINDLE WASHER, Bottom
26	5025011X10	12	BOLT, 5/16-18 x 1-1/4
27	5021227	3	MOWER BLADE, 18"
28	5025159	3	WASHER, 5/8" USS
29	5025019X76	3	BOLT, 5/8-11 x 9-1/2
30	6630843	1	52" MOWER HOUSING ASSEMBLY (Includes safety decals)

Footnotes

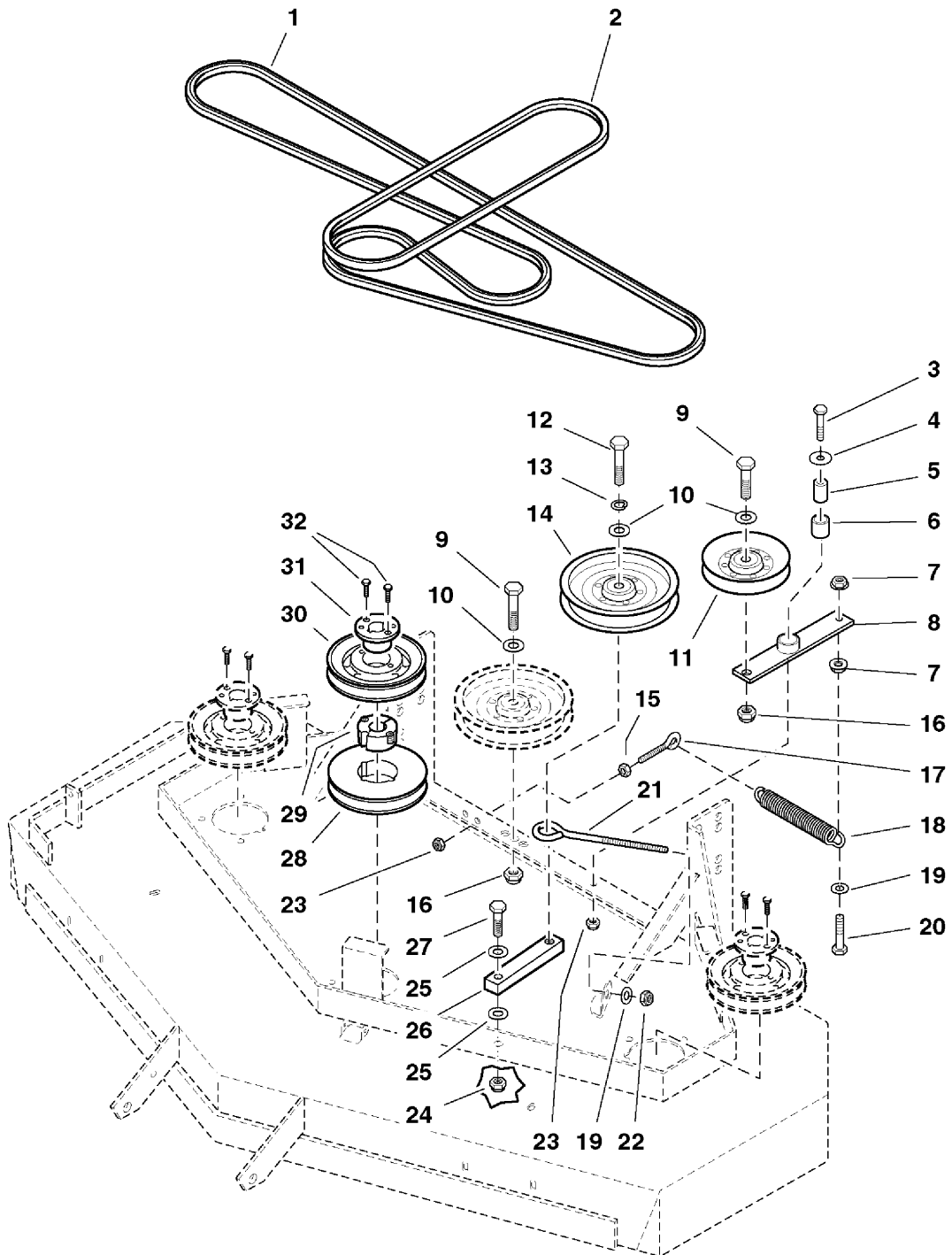
The above parts group applies to the following Mfg. Nos.:

R52R (CE) (S/N: 7671 & Above)

52" Mower Deck - Pulleys, Belt & Idler Arm

0945PB0

NOTE: Unless noted otherwise,
use the standard hardware torque
specification chart.



The above parts group applies to the following Mfg. Nos.:
R52R (CE) (S/N: 7671 & Above)

52" Mower Deck - Pulleys, Belt & Idler Arm

REF NO.	PART NO.	QTY.	DESCRIPTION
1	5021297	1	BELT, Blade Spindle
2	5021298	1	BELT, Deck Drive
3	5025011X14	1	BOLT, 5/16-18 x 1-3/4
4	5025164	1	WASHER, 5/16" Fender
5	5042134	1	SPACER, .32 x .75 x 1.06
6	5020876B	1	BUSHING, Brass
7	5025128	2	NUT, 3/8-16 Hex Serrated Flange
8	5042338B	1	IDLER ARM, Complete (Includes Ref No. 6)
9	5025018X18	2	BOLT, 1/2-20 x 2-1/4
10	5025158	3	WASHER, 1/2" SAE
11	5021097	1	PULLEY, V-Idler
12	5025018X20	1	BOLT, 1/2-20 x 2-1/2
13	5025173	1	WASHER, 1/2" Lock
14	5021096	2	PULLEY, Backside Idler
15	5025032	1	NUT, 5/16-18 Hex
16	5025098	2	NUT, 1/2-20 Hex Nylon Lock
17	5025141X26	1	EYEBOLT, 5/16-18 x 3-1/4
18	5021103	1	SPRING, Extension
19	5025156	1	WASHER, 3/8" SAE
20	5025013X16	1	BOLT, 3/8-16 x 2
21	5021811	1	EYEBOLT, 3/8" x 8"
22	5025096	1	NUT, 3/8-16 Hex Nylon Lock
23	5025057	2	NUT, 5/16-18 Hex Nylon Lock
24	5025094	1	NUT, 7/16-20 Hex Nylon Lock
25	5025157	2	WASHER, 7/16" SAE
26	5044610B	1	ARM, Idler
27	5025016X14	1	BOLT, 7/16-20 X 1-3/4
28	5022159	1	PULLEY, Taper Lock
29	5022160	1	BUSHING, Taper Lock
30	5020814	3	PULLEY, Spindle
31	5020819	3	BUSHING, Tapered Hub
32	5025010X8	6	BOLT, 1/4-20 x 1

Footnotes

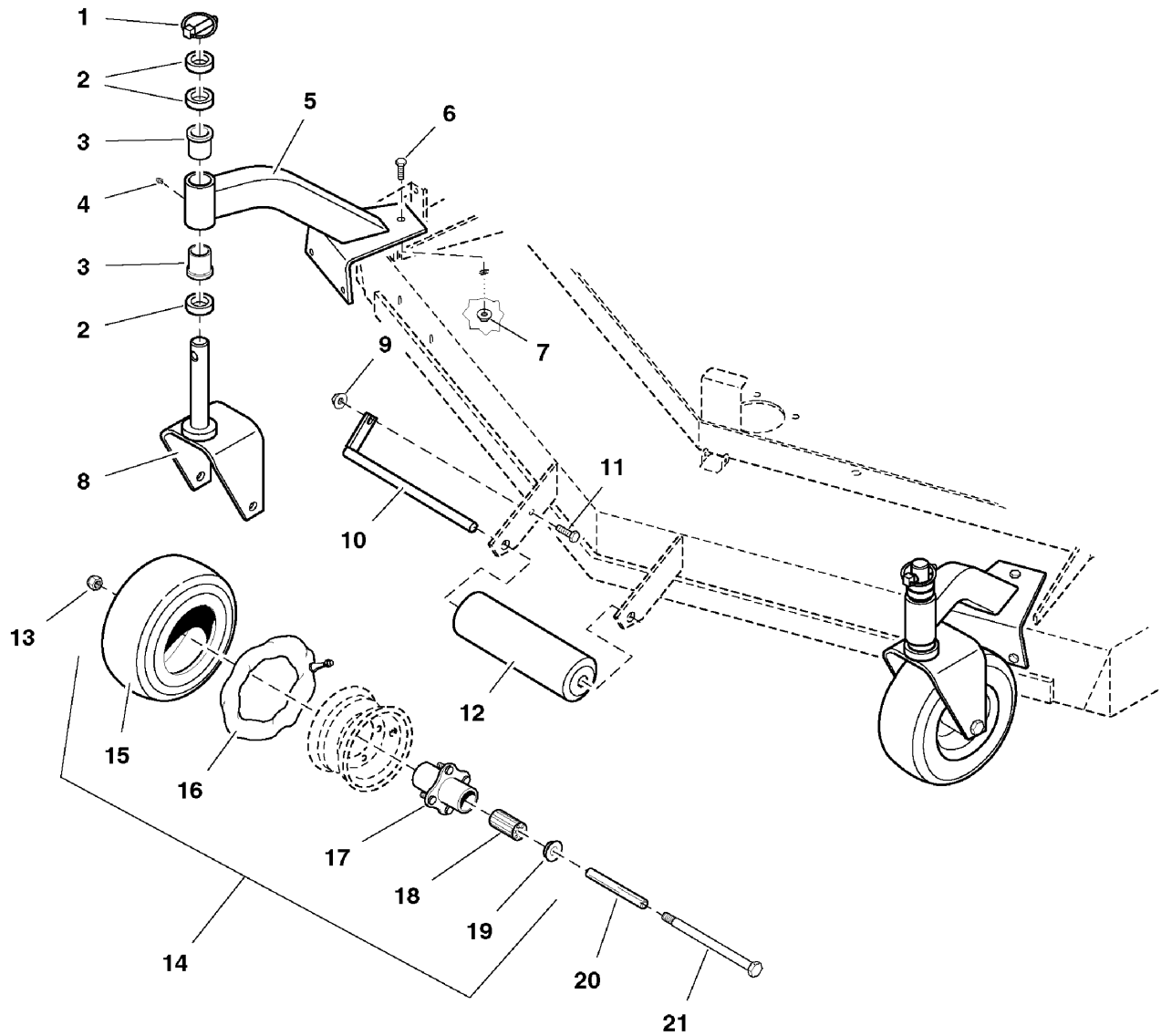
The above parts group applies to the following Mfg. Nos.:

R52R (CE) (S/N: 7671 & Above)

52" & 61" Mower Deck - Rollers & Casters

0945RL0

NOTE: Unless noted otherwise,
use the standard hardware torque
specification chart.



The above parts group applies to the following Mfg. Nos.:

R52R (CE) (S/N: 7671 & Above)

R61R (CE) (S/N: 7671 & Above)

52" & 61" Mower Deck - Rollers & Casters

REF NO.	PART NO.	QTY.	DESCRIPTION
1	5020655	2	PIN, Lynch
2	5041476	6	SPACER, 1.02 x 1.56 x .50
3	5021541	4	BUSHING, Flange
4	5020095	2	GREASE FITTING
5	5043887	2	CASTER MOUNT, Complete (Includes Ref No. 3 & 4)
6	5025011X6	6	BOLT, 5/16-18 x 3/4
7	5025139	6	NUT, 5/16-18 Hex Large Serrated Flange
8	5041702B	2	YOKE, Caster
9	5025128	1	NUT, 3/8-16 Hex Serrated Flange
10	5041653	1	SPINDLE WASHER, Top
11	5025013X6	1	BOLT, 3/8-16 x 3/4
12	5020785	1	ROLLER
13	5025056	2	NUT, 1/2-13 Hex Nylon Lock
14	5021181S	2	WHEEL & TIRE ASSEMBLY, Silver, 9 x 3.5 x 4, Complete (Includes Ref No. 15 - 19)
15	5021181X1	2	TIRE, Front, 9 x 3.5 x 4
16	5021181X2	2	TUBE
17	5021181SX3	2	HUB & BEARING ASSEMBLY, Complete, Silver (Includes Ref No. 18 & 19)
18	5021182	2	BEARING, Roller (1 per tire)
19	5021043	4	RETAINER, Bearing (2 per tire)
20	5041657	2	AXLE, Caster Wheel
21	5025017X44	2	BOLT, 1/2-13 x 5-1/2

Footnotes

The above parts group applies to the following Mfg. Nos.:

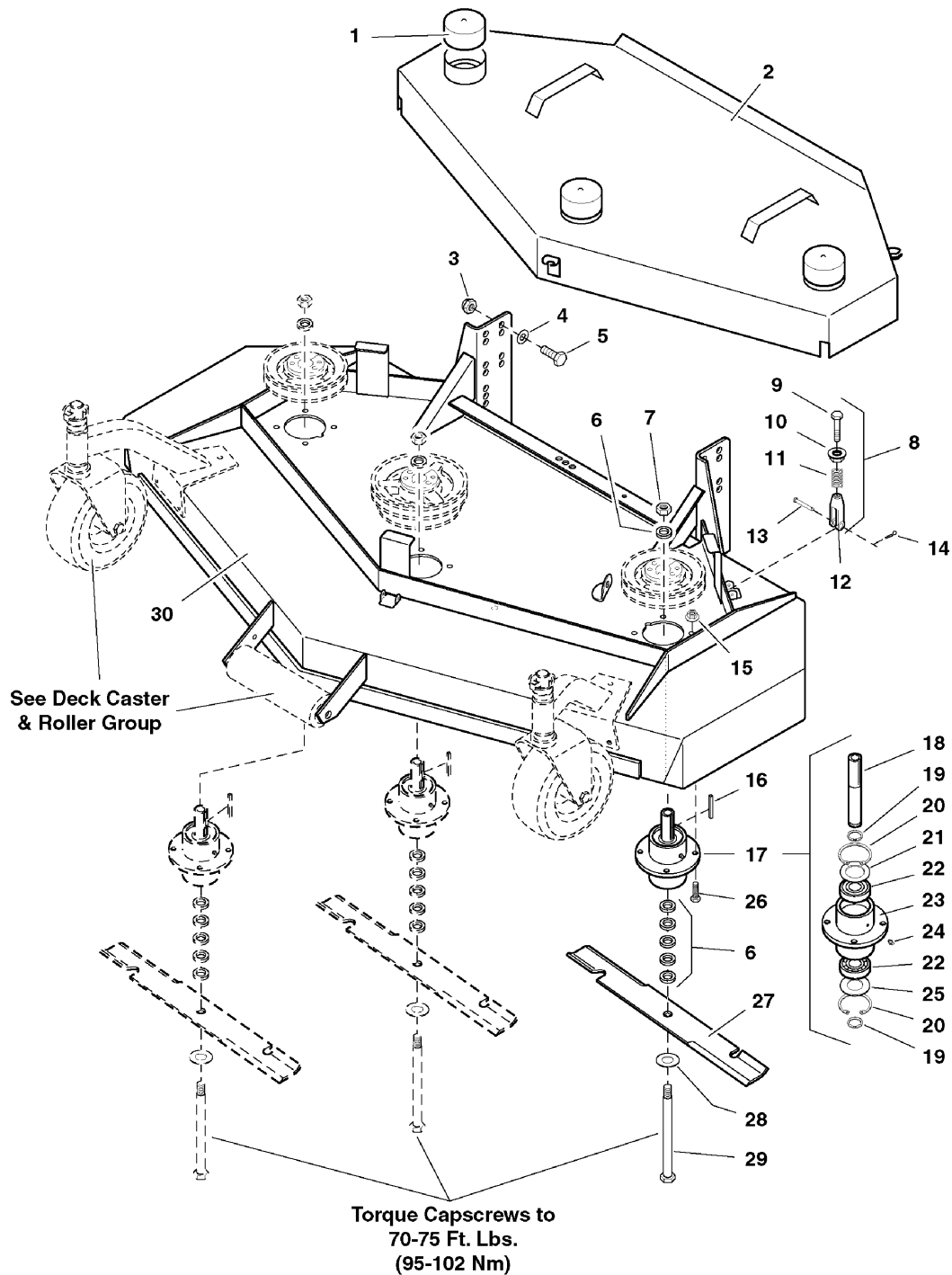
R52R (CE) (S/N: 7671 & Above)

R61R (CE) (S/N: 7671 & Above)

61" Mower Deck - Housing, Covers, Spindles & Blades - Rear Discharge

0946HCR0

NOTE: Unless noted otherwise, use the standard hardware torque specification chart.



The above parts group applies to the following Mfg. Nos.:

R61R (CE) (S/N: 7671 & Above)

61" Mower Deck - Housing, Covers, Spindles & Blades - Rear Discharge

REF NO.	PART NO.	QTY.	DESCRIPTION
1	5021674	3	VINYL CAP
2	30986	1	SPINDLE COVER
3	5025098	8	NUT, 1/2-20 Hex Nylon Lock
4	5025158	8	WASHER, 1/2" SAE
5	5025018X10	8	BOLT, 1/2-20 x 1-1/4
6	5041477	18	SPACER, .63 x 1.06 x .23
7	5025040	3	NUT, 5/8-11 Hex
8	5060078	3	GUARD HOLD DOWN ASSEMBLY (Includes Ref No. 9-12)
9	5025011X16	3	BOLT, 5/16-18 x 2
10	5025128	3	NUT, 3/8-16 Hex Serrated Flange
11	5045298	3	SPRING, Guard Hold Down
12	5020979	3	CLEVIS, 5/16-24, Plastic
13	5020841X4	3	CLEVIS PIN
14	5020841X5	3	COTTER PIN
15	5025139	12	NUT, 5/16-18 Hex Large Serrated Flange
16	5050407X9	3	KEY, 1/4 SQ. X 2-1/2
17	5030301	3	SPINDLE ASSEMBLY, Complete
18	5041480	3	SPINDLE SHAFT
19	5020864	6	SNAP RING, External
20	5020866	6	SNAP RING, Internal
21	5041653	3	SPINDLE WASHER, Top
22	5020828	6	BEARING
23	5030293	3	SPINDLE HOUSING
24	5020095	3	GREASE FITTING
25	5041672	3	SPINDLE WASHER, Bottom
26	5025011X10	12	BOLT, 5/16-18 x 1-1/4
27	5020842	3	MOWER BLADE, 21"
28	5025159	3	WASHER, 5/8" USS
29	5025019X76	3	BOLT, 5/8-11 x 9-1/2
30	30983	1	61" REAR DISCHARGE MOWER HOUSING

Footnotes

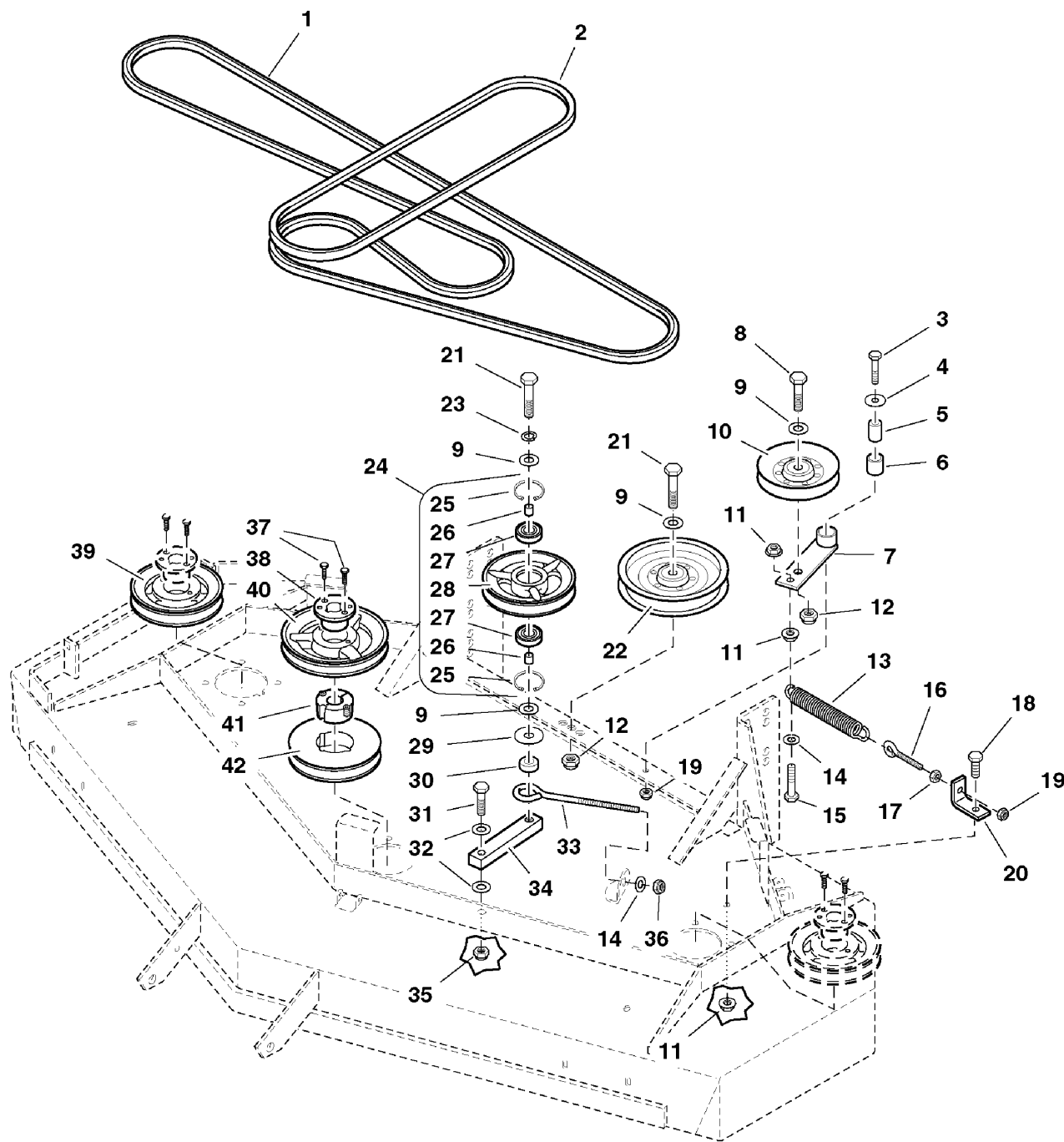
The above parts group applies to the following Mfg. Nos.:

R61R (CE) (S/N: 7671 & Above)

61" Mower Deck - Pulleys, Belt & Idler Arm

0946PB0

NOTE: Unless noted otherwise,
use the standard hardware torque
specification chart.



The above parts group applies to the following Mfg. Nos.:
R61R (CE) (S/N: 7671 & Above)

61" Mower Deck - Pulleys, Belt & Idler Arm

REF NO.	PART NO.	QTY.	DESCRIPTION
1	5020824	1	BELT, Blade Spindle
2	5021063	1	BELT, Deck Drive
3	5025011X14	1	BOLT, 5/16-18 x 1-3/4
4	5025164	1	WASHER, 5/16" Fender
5	5042134	1	SPACER, .32 x .75 x 1.06
6	5020876B	1	BUSHING, Brass
7	5042145B	1	IDLER ARM, Complete
8	5025018X16	1	BOLT, 1/2-20 x 2
9	5025158	4	WASHER, 1/2" SAE
10	5021097	1	PULLEY, V-Idler
11	5025128	3	NUT, 3/8-16 Hex Serrated Flange
12	5025098	2	NUT, 1/2-20 Hex Nylon Lock
13	5021103	1	SPRING, Extension
14	5025156	2	WASHER, 3/8" SAE
15	5025013X16	1	BOLT, 3/8-16 x 2
16	5025141	1	EYEBOLT
17	5025032	1	NUT, 5/16-18 Hex
18	5025013X8	1	BOLT, 3/8-16 x 1
19	5025057	2	NUT, 5/16-18 Hex Nylon Lock
20	5042142B	1	SPRING ANCHOR
21	5025018X18	2	BOLT, 1/2-20 x 2-1/4
22	5021096	1	PULLEY, Backside Idler
23	5025173	1	WASHER, 1/2" Lock
24	5030819	1	IDLER PULLEY, Complete
25	5020865	2	SNAP RING, Internal
26	5020870	2	INSERT, Bearing
27	5020827	2	BEARING
28	5041481	1	PULLEY, Idler
29	5025150	1	WASHER, 1/2" USS
30	5044609	1	SPACER, .52 X 1.00 X .38
31	5025016X14	1	BOLT, 7/16-20 X 1-3/4
32	5025157	2	WASHER, 7/16" SAE
33	5021811	1	EYEBOLT, 3/8" x 8"
34	5044610B	1	ARM, Idler
35	5025094	1	NUT, 7/16-20 Hex Nylon Lock
36	5025096	1	NUT, 3/8-16 Hex Nylon Lock
37	5025010X8	6	BOLT, 1/4-20 x 1
38	5020819	3	BUSHING, Tapered Hub
39	5020814	2	PULLEY, Spindle
40	5020815	1	PULLEY, Spindle
41	5022160	1	BUSHING, Taper Lock

Footnotes

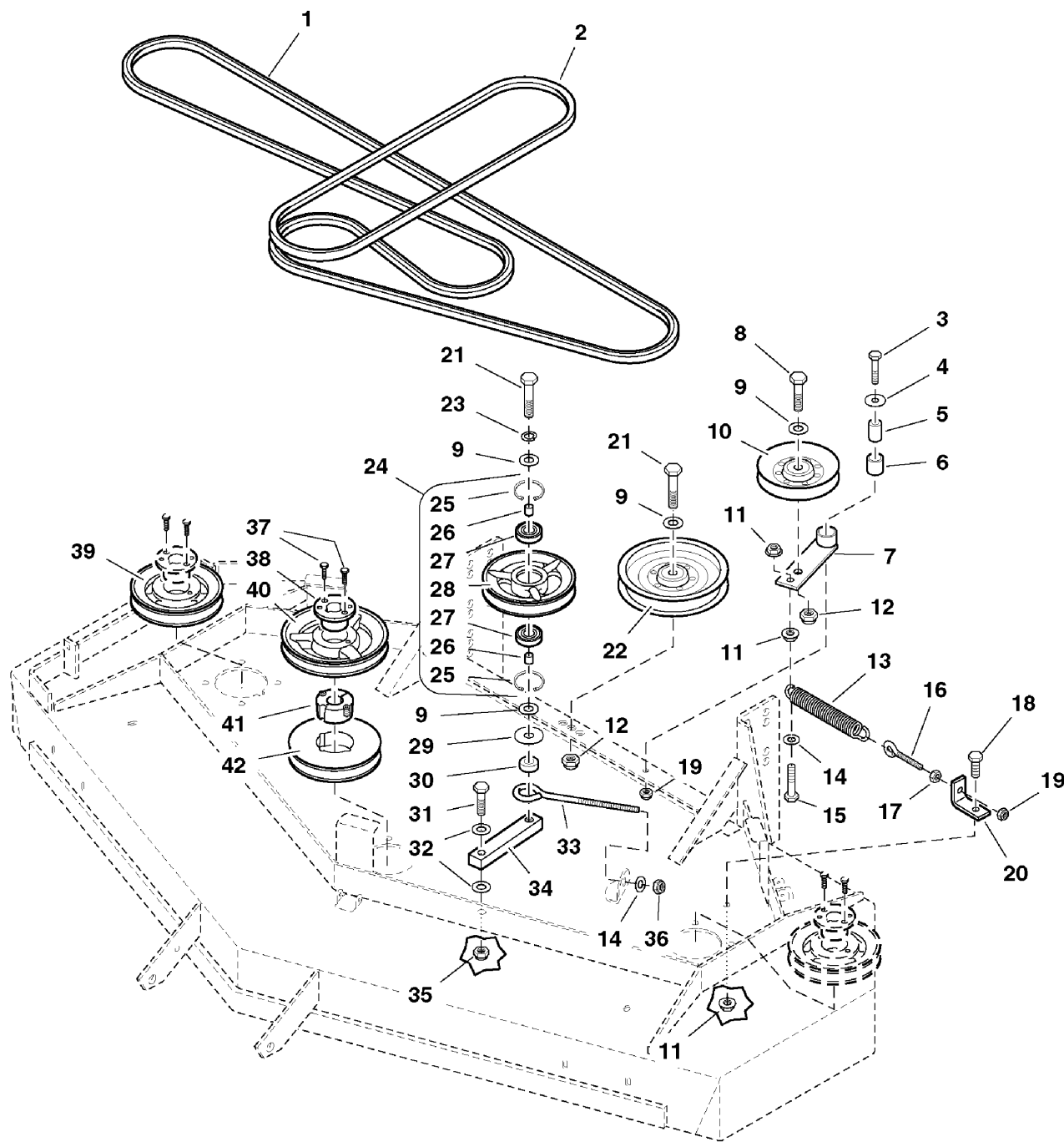
The above parts group applies to the following Mfg. Nos.:

R61R (CE) (S/N: 7671 & Above)

61" Mower Deck - Pulleys, Belt & Idler Arm

0946PB0

NOTE: Unless noted otherwise,
use the standard hardware torque
specification chart.



The above parts group applies to the following Mfg. Nos.:
R61R (CE) (S/N: 7671 & Above)

61" Mower Deck - Pulleys, Belt & Idler Arm

REF NO.	PART NO.	QTY.	DESCRIPTION
42	5022159	1	PULLEY, Taper Lock

Footnotes

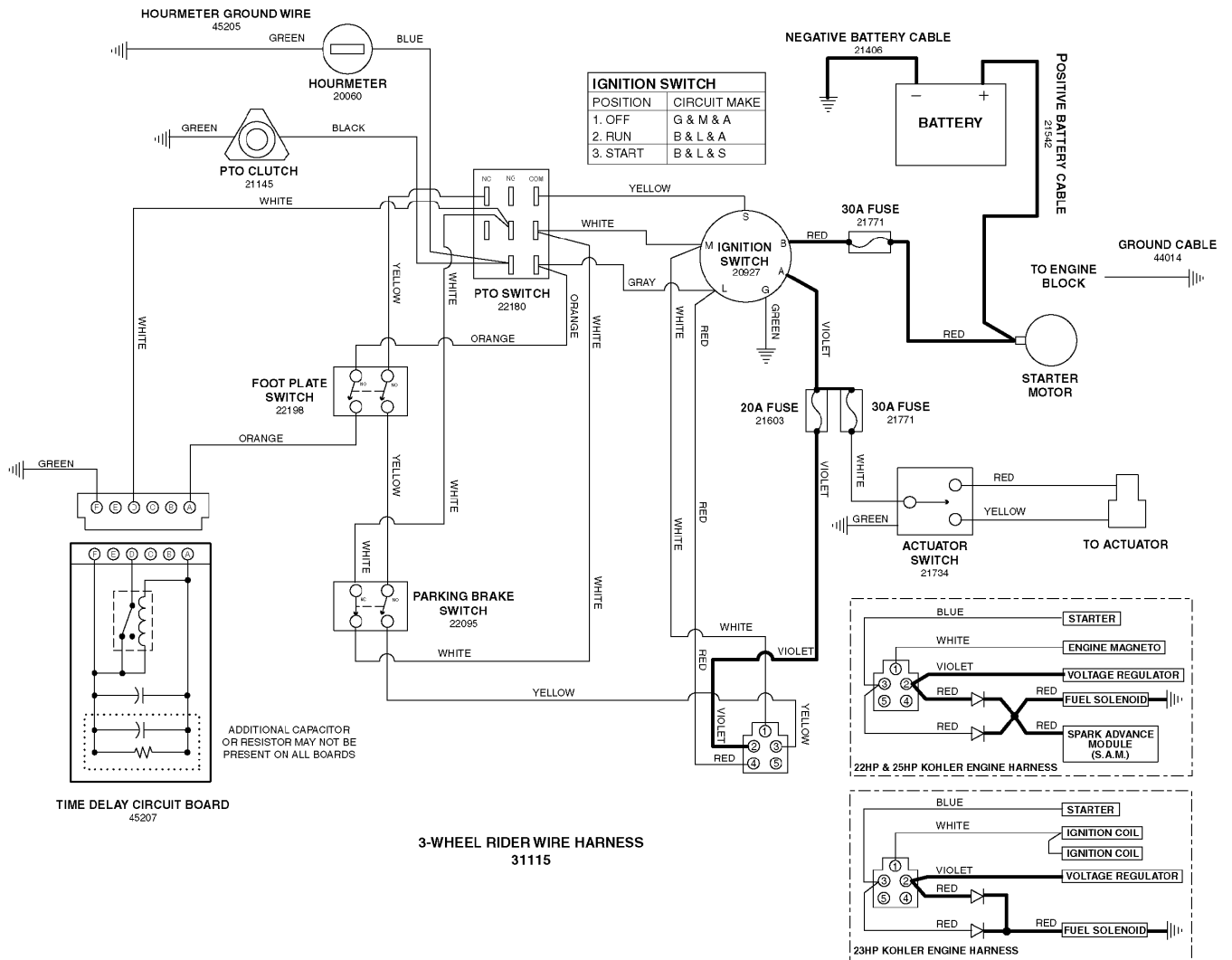
The above parts group applies to the following Mfg. Nos.:

R61R (CE) (S/N: 7671 & Above)

Electrical Schematic - Charging Circuit - Kohler

(S/N: 11581 & below)

094esk0



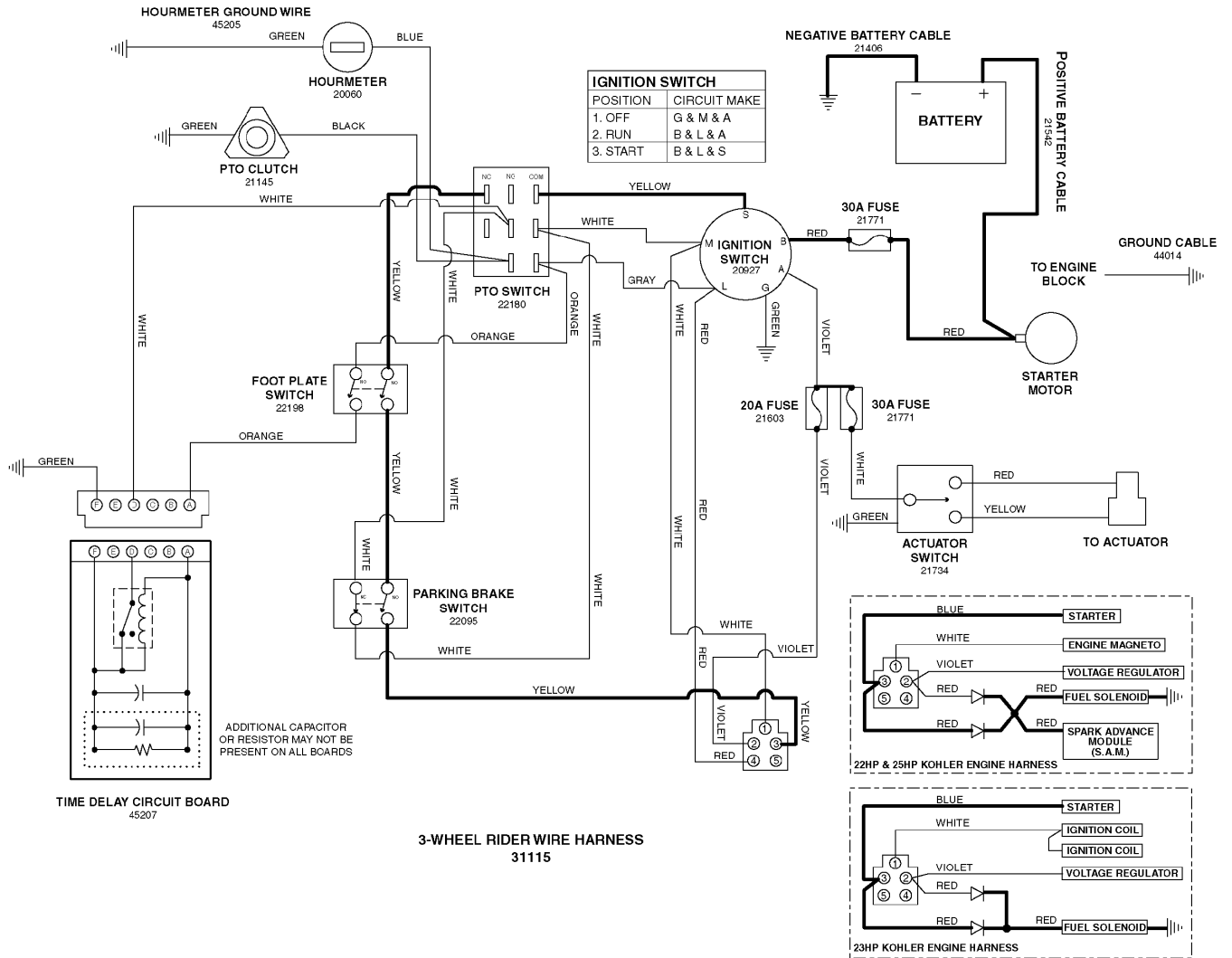
The above parts group applies to the following Mfg. Nos.:

H2220K (S/N: 7671 & Above)

Electrical Schematic - Cranking Circuit - Kohler

(S/N: 11581 & below)

094eskr0

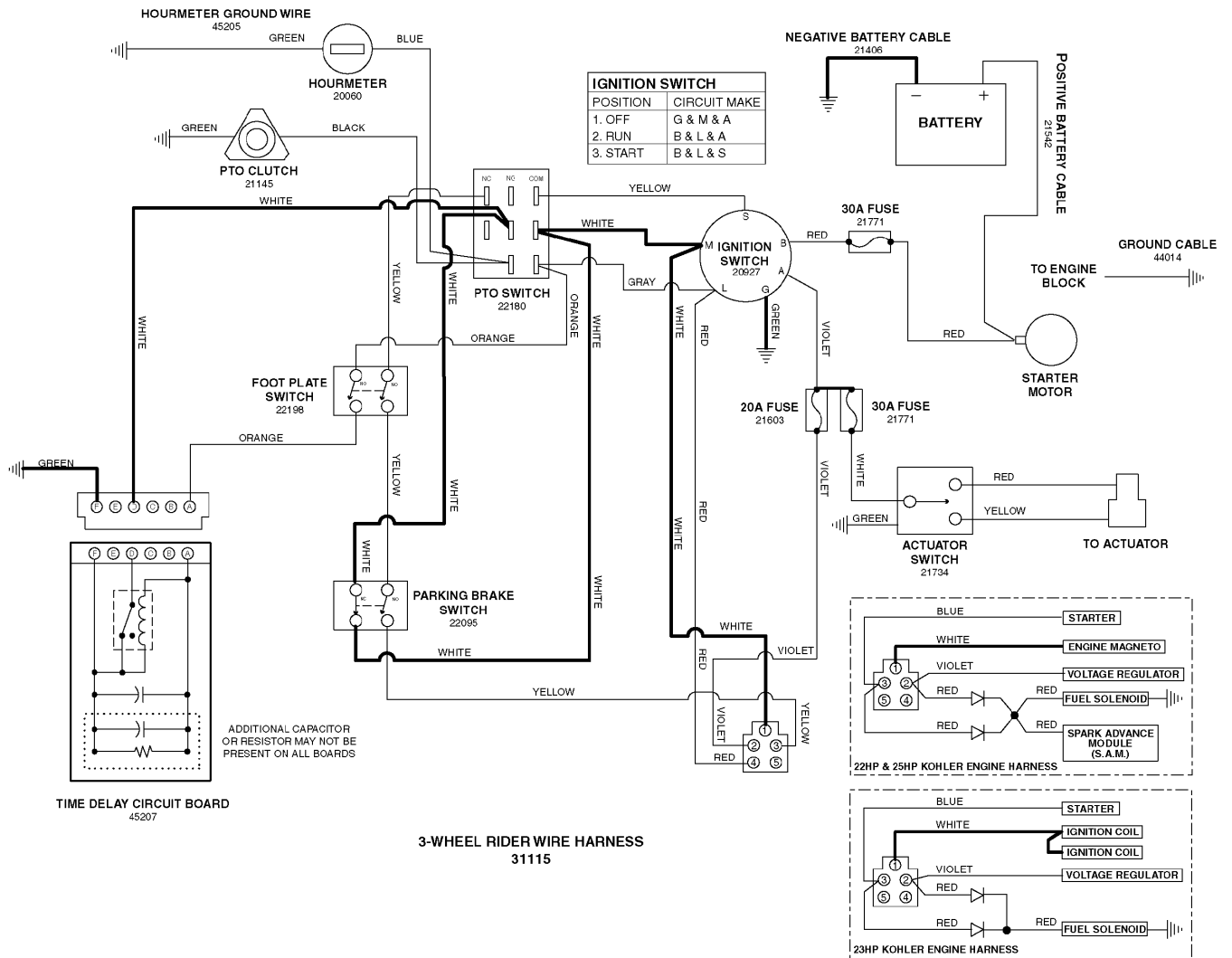


The above parts group applies to the following Mfg. Nos.:
H2220K (S/N: 7671 & Above)

Electrical Schematic - Operator Presence/Safety Circuit - Kohler

(S/N: 11581 & below)

094eski0

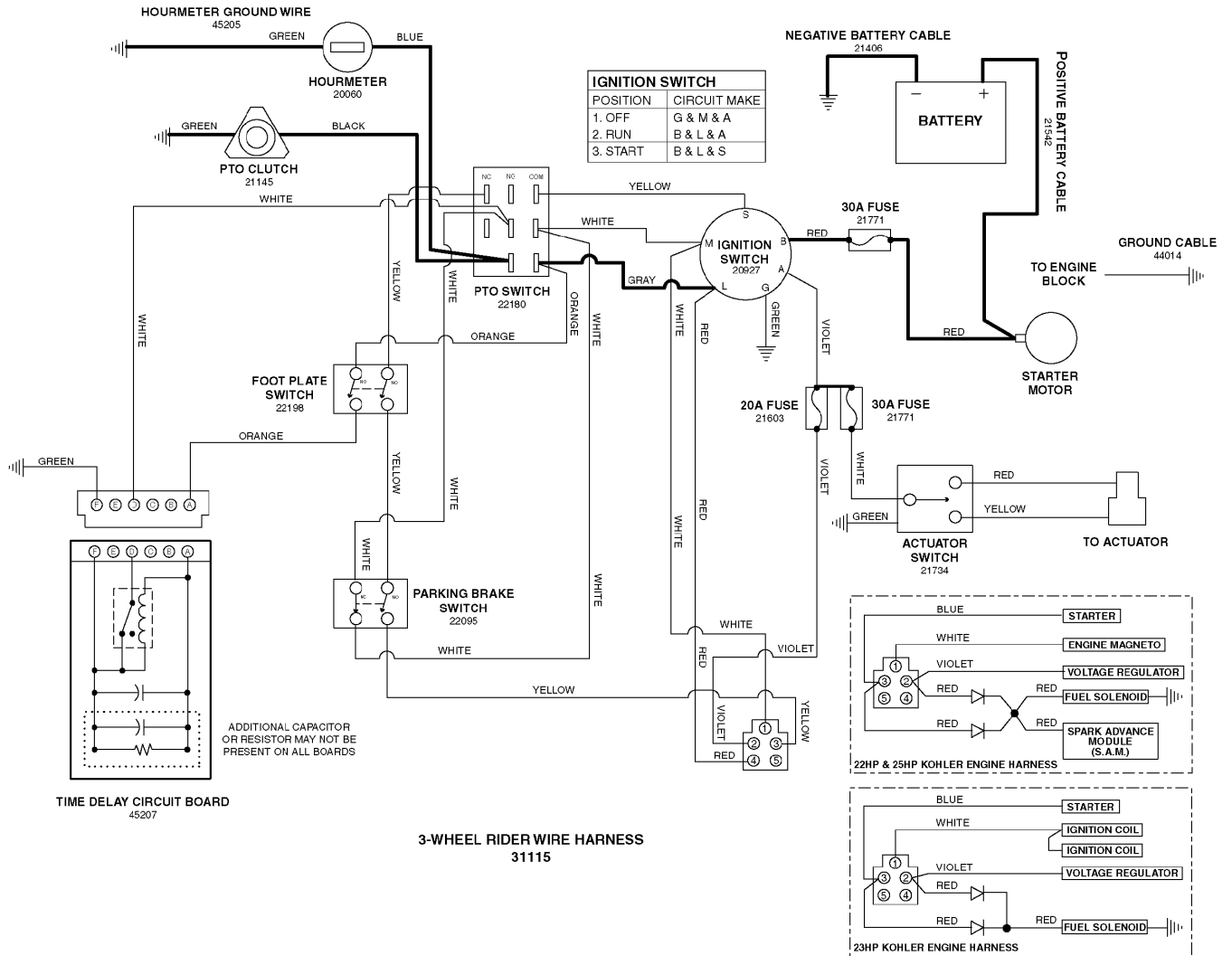


The above parts group applies to the following Mfg. Nos.:
H2220K (S/N: 7671 & Above)

Electrical Schematic - PTO Clutch Circuit - Kohler

(S/N: 11581 & below)

094eskp0



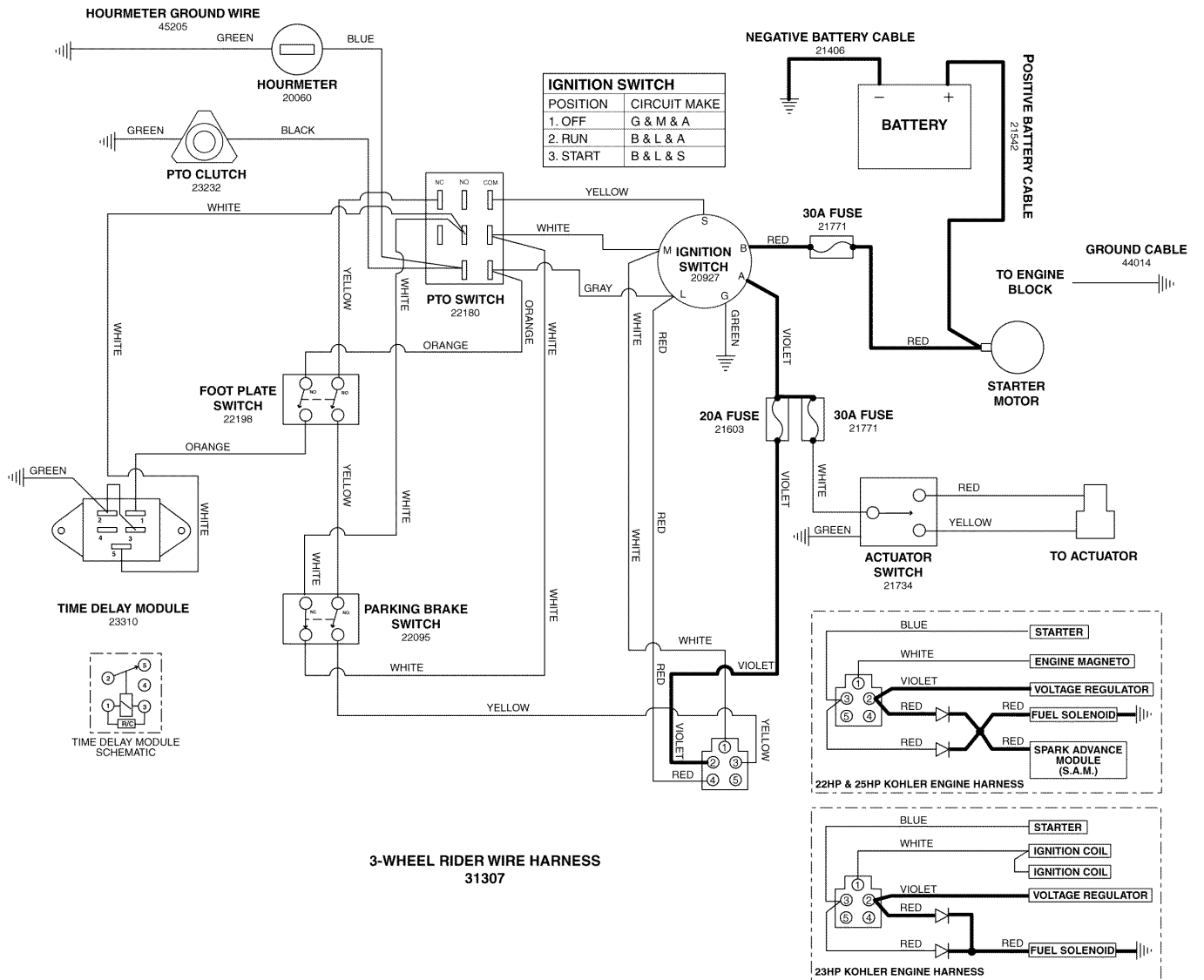
The above parts group applies to the following Mfg. Nos.:

H2220K (S/N: 7671 & Above)

Electrical Schematic - Charging Circuit - Kohler

(S/N: 11582 & above)

094eskc1

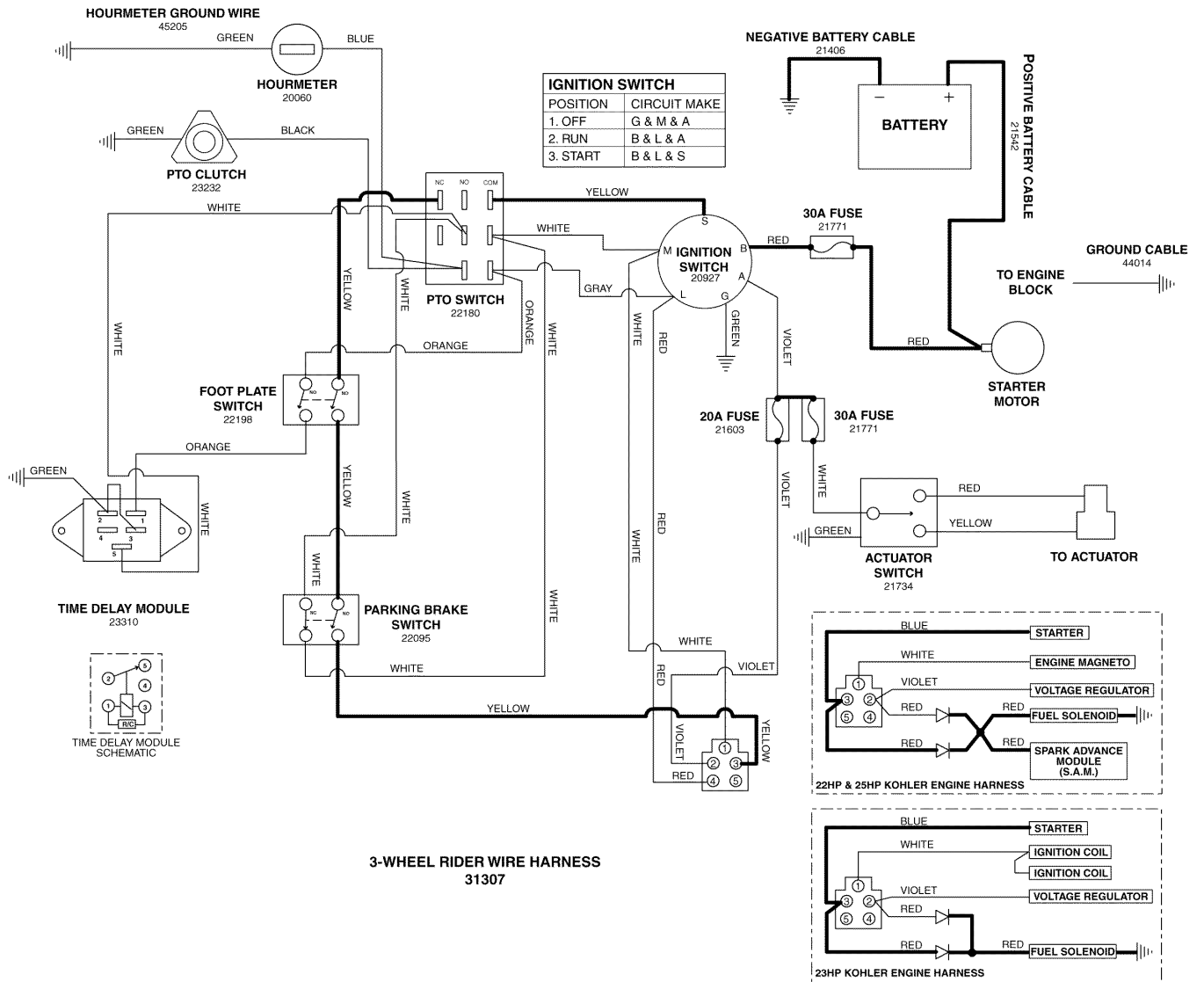


The above parts group applies to the following Mfg. Nos.:
H2220K (S/N: 7671 & Above)

Electrical Schematic - Cranking Circuit - Kohler

(S/N: 11582 & above)

094eskr1

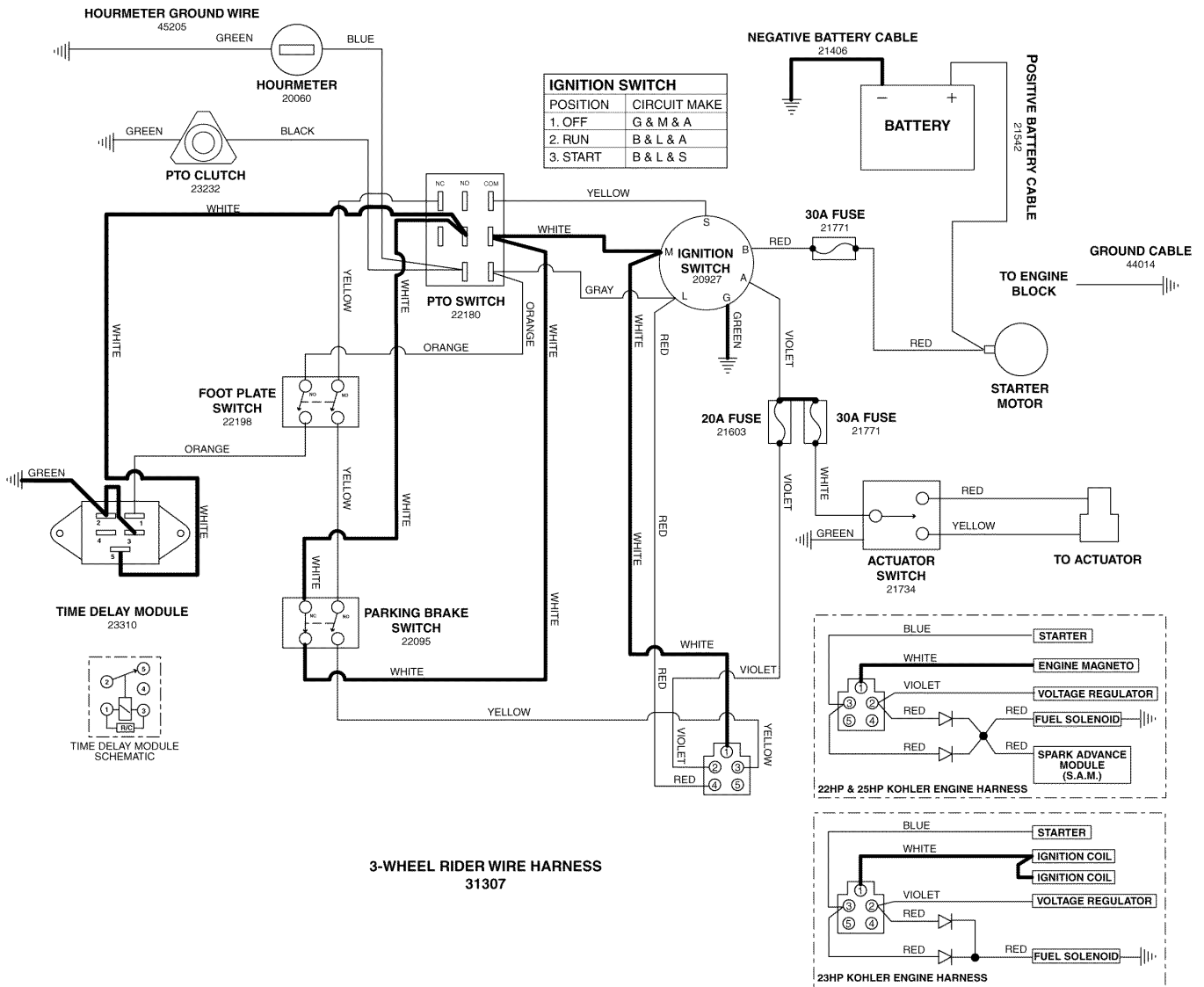


The above parts group applies to the following Mfg. Nos.:
H2220K (S/N: 7671 & Above)

Electrical Schematic - Operator Presence/Safety Circuit - Kohler

(S/N: 11582 & above)

094eski1



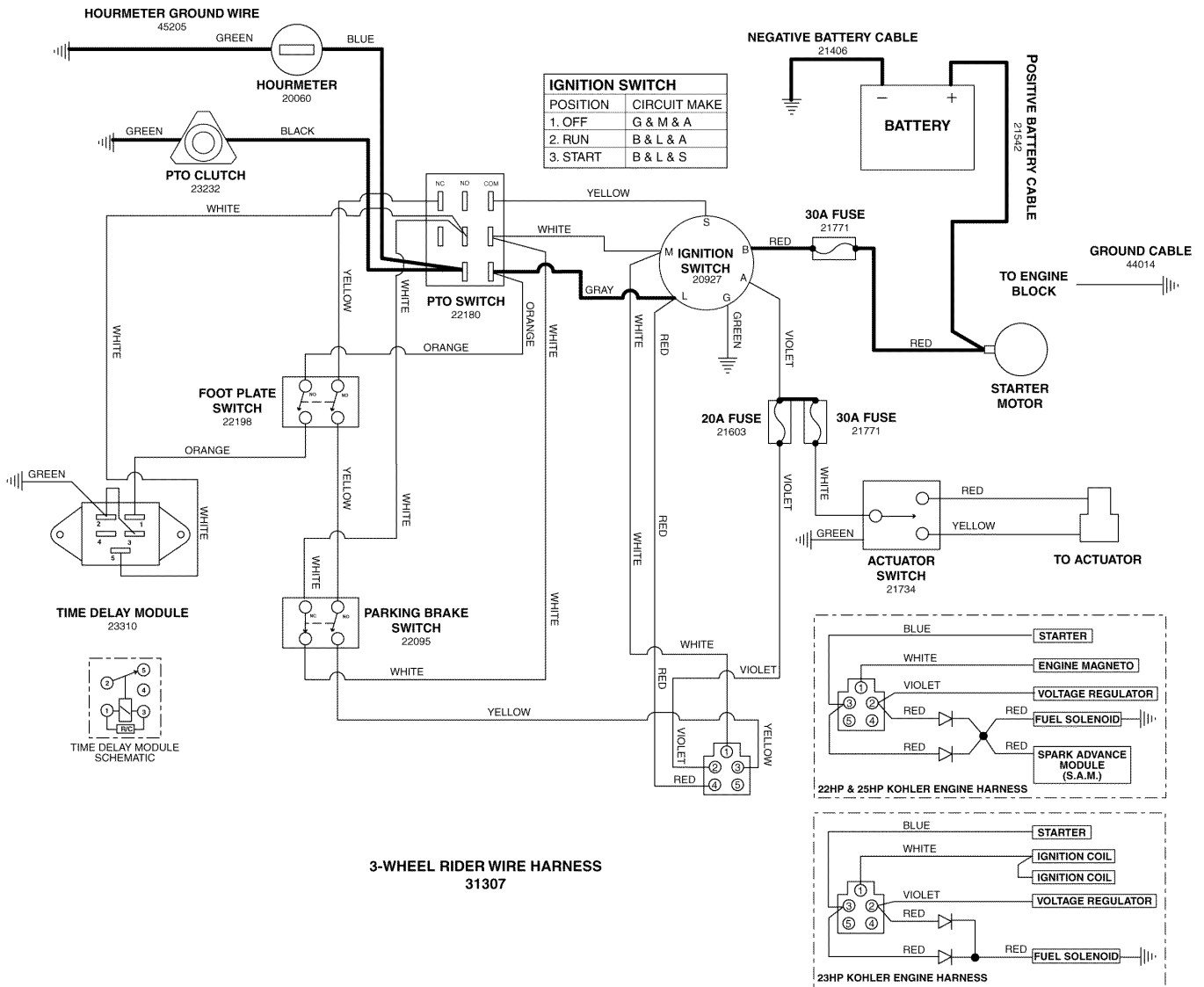
The above parts group applies to the following Mfg. Nos.:

H2220K (S/N: 7671 & Above)

Electrical Schematic - PTO Clutch Circuit - Kohler

(S/N: 11582 & above)

094eskp1



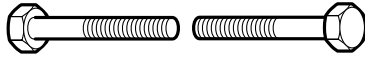
The above parts group applies to the following Mfg. Nos.:

H2220K (S/N: 7671 & Above)

Hardware Identification & Torque Specifications

Common Hardware Types

Hex Head Capscrew



Washer



Lockwasher



Carriage Bolt



Hex Nut

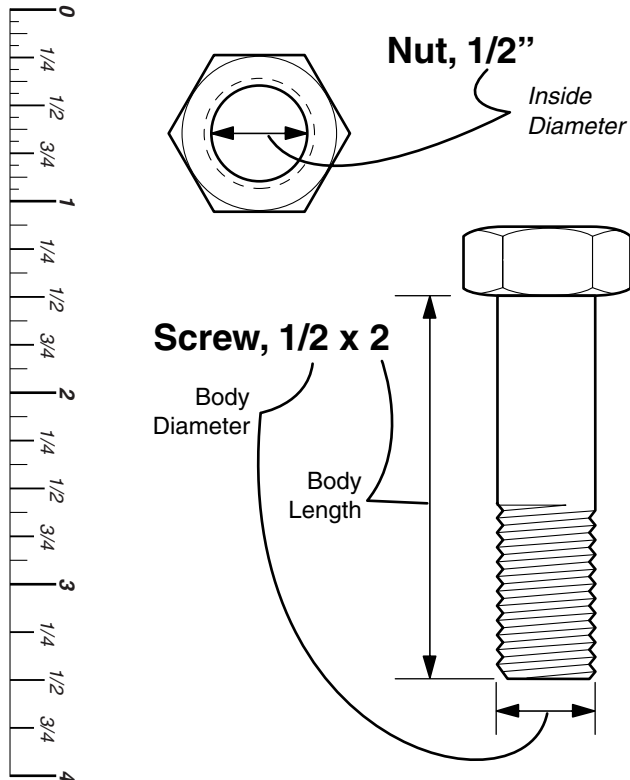


Standard Hardware Sizing

When a washer or nut is identified as $1/2''$, this is the *Nominal size*, meaning the *inside diameter* is $1/2$ inch; if a second number is present it represents the *threads per inch*

When bolt or capscrew is identified as $1/2 - 16 \times 2''$, this means the *Nominal size*, or *body diameter* is $1/2$ inch; the second number represents the *threads per inch* (16 in this example, and the final number is the *body length* of the bolt or screw (in this example 2 inches long).

The guides and ruler furnished below are designed to help you select the appropriate hardware and tools.



Torque Specification Chart

FOR STANDARD MACHINE HARDWARE (Tolerance $\pm 20\%$)

Hardware Grade	No Marks SAE Grade 2		SAE Grade 5		SAE Grade 8	
	in/lbs ft/lbs	Nm.	in/lbs ft/lbs	Nm.	in/lbs ft/lbs	Nm.
8-32	19	2.1	30	3.4	41	4.6
8-36	20	2.3	31	3.5	43	4.9
10-24	27	3.1	43	4.9	60	6.8
10-32	31	3.5	49	5.5	68	7.7
1/4-20	66	7.6	8	10.9	12	16.3
1/4-28	76	8.6	10	13.6	14	19.0
5/16-18	11	15.0	17	23.1	25	34.0
5/16-24	12	16.3	19	25.8	27	34.0
3/8-16	20	27.2	30	40.8	45	61.2
3/8-24	23	31.3	35	47.6	50	68.0
7/16-14	30	40.8	50	68.0	70	95.2
7/16-20	35	47.6	55	74.8	80	108.8
1/2-13	50	68.0	75	102.0	110	149.6
1/2-20	55	74.8	90	122.4	120	163.2
9/16-12	65	88.4	110	149.6	150	204.0
9/16-18	75	102.0	120	163.2	170	231.2
5/8-11	90	122.4	150	204.0	220	299.2
5/8-18	100	136	180	244.8	240	326.4
3/4-10	160	217.6	260	353.6	386	525.0
3/4-16	180	244.8	300	408.0	420	571.2
7/8-9	140	190.4	400	544.0	600	816.0
7/8-14	155	210.8	440	598.4	660	897.6
1-8	220	299.2	580	788.8	900	1,244.0
1-12	240	326.4	640	870.4	1,000	1,360.0

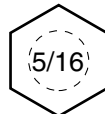
NOTES

- These torque values are to be used for all hardware excluding: locknuts, self-tapping screws, thread forming screws, sheet metal screws and socket head setscrews.
- Recommended seating torque values for locknuts:
 - for prevailing torque locknuts - use 65% of grade 5 torques.
 - for flange whizlock nuts and screws - use 135% of grade 5 torques.
- Unless otherwise noted on assembly drawings, all torque values must meet this specification.

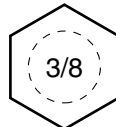
Wrench & Fastener Size Guide



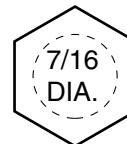
$1/4''$ Bolt or Nut
Wrench— $7/16''$



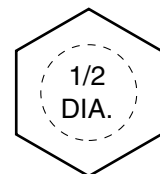
$5/16''$ Bolt or Nut
Wrench— $1/2''$



$3/8''$ Bolt or Nut
Wrench— $9/16''$



$7/16''$ Bolt or Nut
Wrench (Bolt)— $5/8''$
Wrench (Nut)— $11/16''$



$1/2''$ Bolt or Nut
Wrench— $3/4''$

Parts Manual

ProCut 20 Series

3-Wheel Riding Mower

Serial No. 7671 & Above

IT IS THE POLICY OF FERRIS INDUSTRIES TO IMPROVE ITS PRODUCTS WHENEVER IT IS POSSIBLE AND PRACTICAL TO DO SO. WE RESERVE THE RIGHT TO MAKE CHANGES OR ADD IMPROVEMENTS AT ANY TIME WITHOUT INCURRING ANY OBLIGATION TO MAKE SUCH CHANGES ON PRODUCTS MANUFACTURED PREVIOUSLY.



Ferris Industries

5375 North Main Street
Munnsville, NY 13409 USA
800-933-6175

www.ferrisindustries.com

© Copyright 2006 Ferris Industries
All Rights Reserved. Printed In USA.