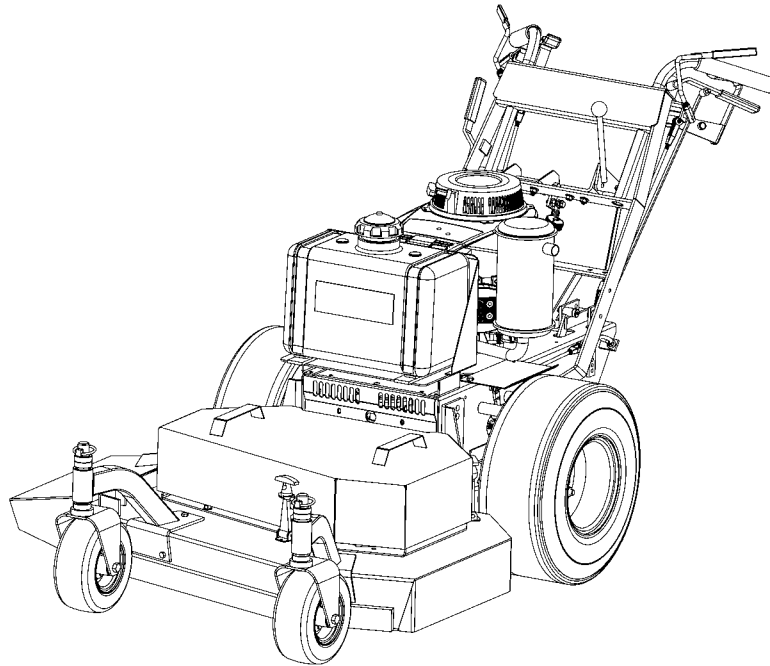




Parts Manual HydroWalk SD

Single-Drive Walk Behind Mower



Models:	Description:
5901041	15HP Kawasaki V-Twin w/ 36" Mower Deck (CE) (HW36KAV15CE)
5901044	15HP Kawasaki V-Twin w/ 36" Mower Deck (HW36KAV15)
5901045	15HP Kawasaki V-Twin w/ 32" Mower Deck (CE) (HW32KAV15CE)

Briggs and Stratton Yard Power Products Group

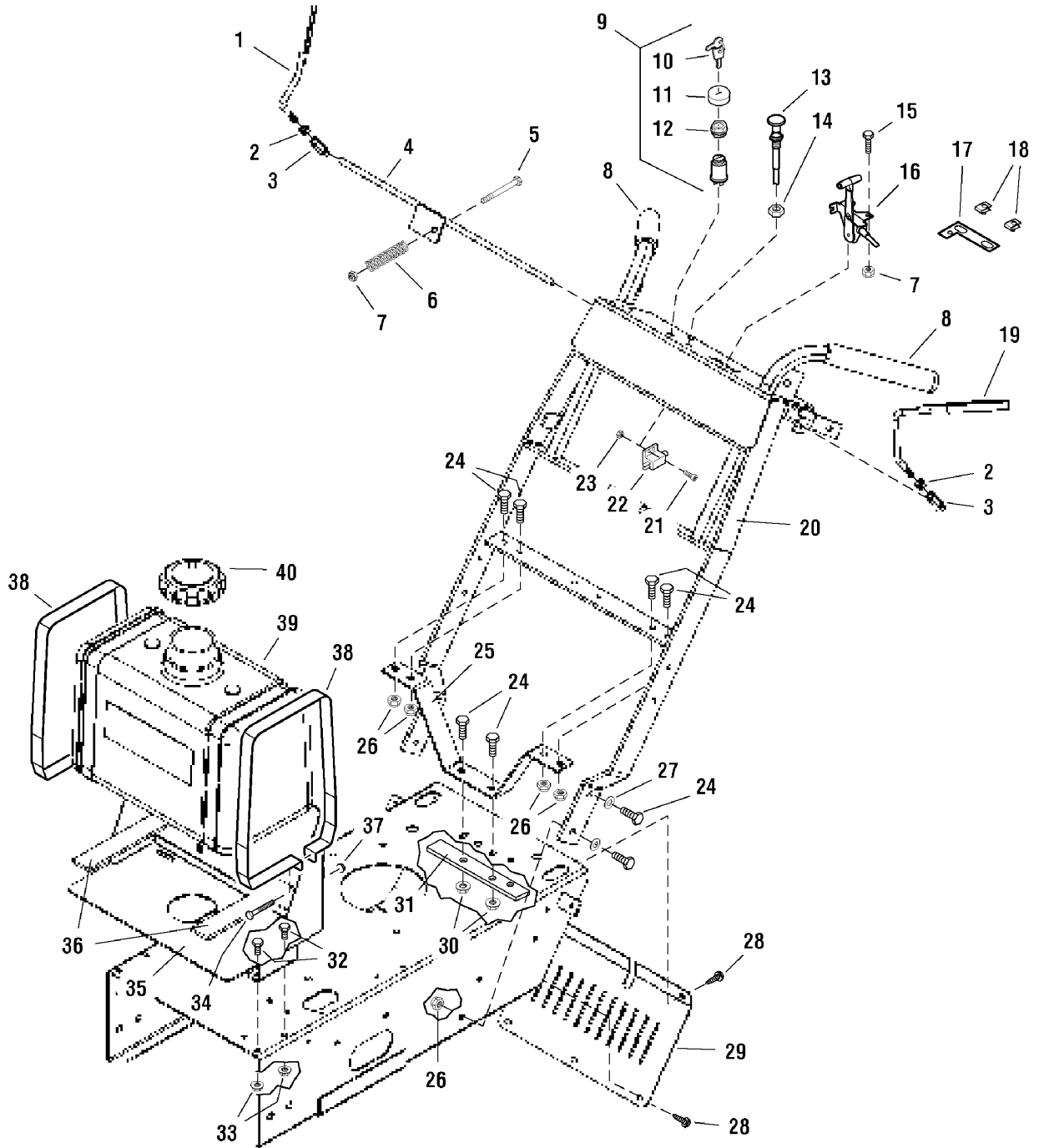
5375 North Main Street
Munnsville, NY 13409 USA
800-933-6175

5023292
Revision 01
Rev. Date: 02/2007
TP 400-7151-01-WS-F

MODEL COMPONENTS	PAGE
Handle Bar & Engine Deck Group	4
Fuel Supply Hose & Tank Replacement Part Group	8
Engine & PTO Group - Kawasaki	10
Transaxle Drive Group	14
Motion Control Group	16
Parking Brake Group	18
Decals - Brand, Model, Safety & Operation	22
Blade Engagement Group	24
32" & 36" Mower Deck - Frame, Caster & Shield	26
32" & 36" Mower Deck - Housing, Covers, Spindles & Blades	28
32" & 36" Mower Deck - Pulleys, Belt & Idler Arm	32
Electrical Group	34
Electrical Schematic - Kawasaki	36
Torque Specification Chart	Inside Back Cover

Handle Bar & Engine Deck Group

NOTE: Unless noted otherwise,
use the standard hardware torque
specification chart.



The above parts group applies to the following Mfg. Nos.:

5901045 (CE) (HW32KAV15CE)

5901044 (HW36KAV15)

5901041 (CE) (HW36KAV15CE)

Handle Bar & Engine Deck Group

REF NO.	PART NO.	QTY.	DESCRIPTION
1	5049039	1	OPERATOR PRESENCE HANDLE, RH
1	5021490	1	GRIP, Vinyl
2	5025034	2	NUT, 3/8-16 Hex
3	5043417	2	HEX ADJUSTER
4	5043424	1	SWITCH ROD
5	5025010X24	1	BOLT, 1/4-20 x 3
6	5020637	1	SPRING, Compression
7	5025095	3	NUT, 1/4-20 Hex Nylon Lock
8	5020837	2	GRIP, Foam
9	5021842	1	SWITCH, Ignition, Complete (Includes Ref No. 10 - 12)
10	5022789	1	KEY, Ignition, Molded Set
11	5022790	1	COVER
12	5022791	1	PLASTIC NUT
13	5046501	1	CABLE, Choke Control, 47"
14	5025035	1	NUT, 3/8-24 Hex
15	5025010X6	2	BOLT, 1/4-20 x 3/4
16	5021887	1	CABLE, Throttle, 45"
17	5048474	1	THROTTLE STOP PLATE (CE models only)
18	5022665	2	BODY CLIP, 1/4-20 (CE models only)
19	5049038	1	OPERATOR PRESENCE HANDLE, LH
19	5021490	1	GRIP, Vinyl
20	5030694B	1	HANDLE BAR ASSEMBLY
21	25179-4	2	SCREW, #10-24 x 1/2
22	5021769	1	SWITCH, Plunger, NC
23	25029	2	NUT, #10-24 Hex
24	5025013X8	10	BOLT, 3/8-16 x 1
25	5042523B	1	HANDLE BAR SUPPORT
26	5025096	8	NUT, 3/8-16 Hex Nylon Lock
27	5025156	4	WASHER, 3/8" SAE
28	5025279X6	5	BOLT, Self-Tapping, 1/4-20 x 3/4
29	5042641B	1	SCREEN
30	5025128	2	NUT, 3/8-16 Hex Serrated Flange
31	5042682B	1	ENGINE DECK SUPPORT
32	5025011X6	4	BOLT, 5/16-18 x 3/4
33	5025127	4	NUT, 5/16-18 Hex Small Serrated Flange
34	5025010X12	2	BOLT, 1/4-20 X 1-1/2
35	5049249B	1	FUEL TANK MOUNT
36	5021877	2	RUBBER PAD
37	5025126	2	NUT, 1/4-20 Hex Serrated Flange
38	5044694B	2	FUEL TANK STRAP
39	5021869	1	FUEL TANK, 5 Gallon

Footnotes

The above parts group applies to the following Mfg. Nos.:

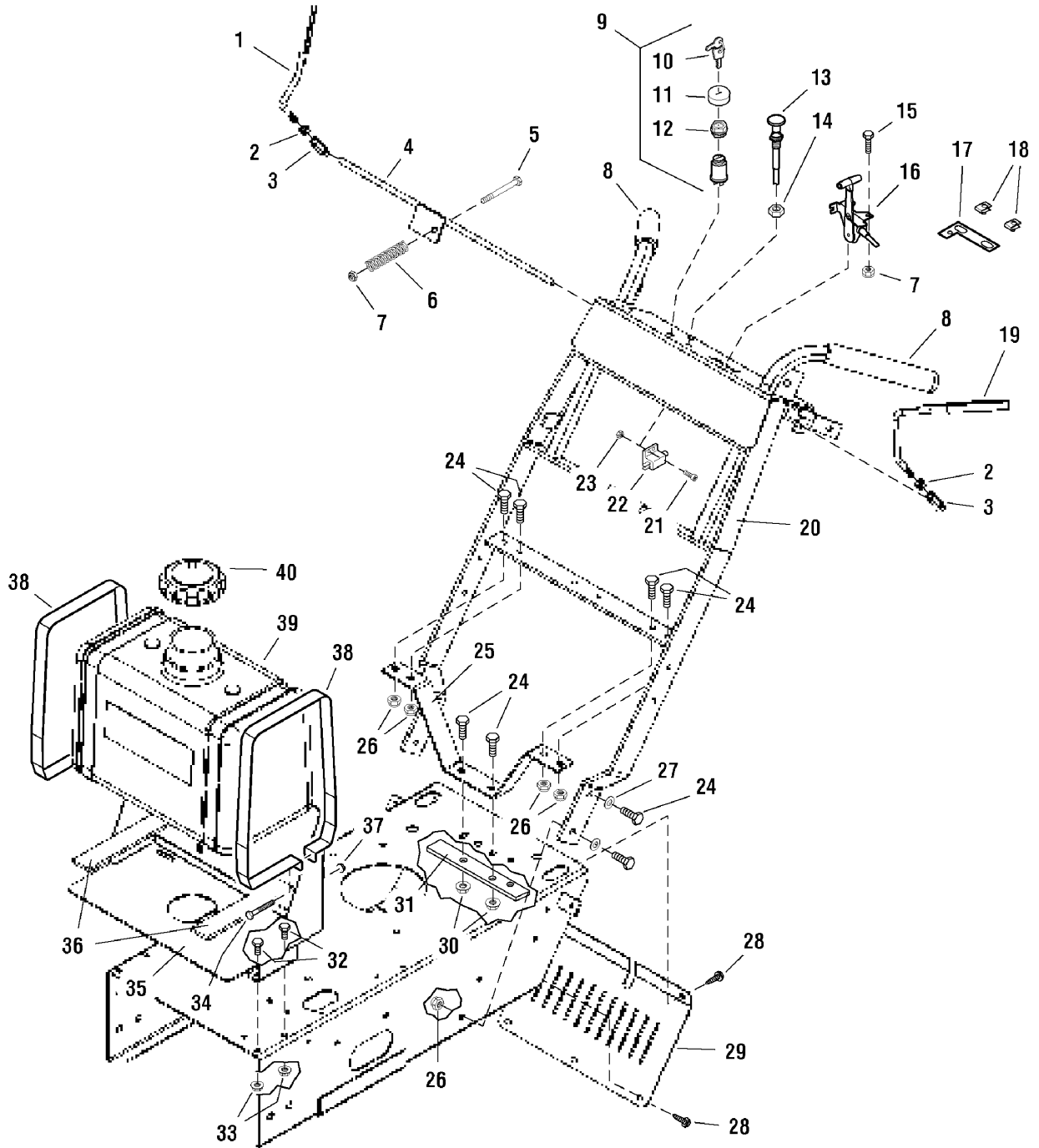
5901045 (CE) (HW32KAV15CE)

5901044 (HW36KAV15)

5901041 (CE) (HW36KAV15CE)

Handle Bar & Engine Deck Group

NOTE: Unless noted otherwise,
use the standard hardware torque
specification chart.



The above parts group applies to the following Mfg. Nos.:

5901045 (CE) (HW32KAV15CE)

5901044 (HW36KAV15)

5901041 (CE) (HW36KAV15CE)

Handle Bar & Engine Deck Group

REF NO.	PART NO.	QTY.	DESCRIPTION
40	5022158	1	FUEL TANK CAP

Footnotes

The above parts group applies to the following Mfg. Nos.:

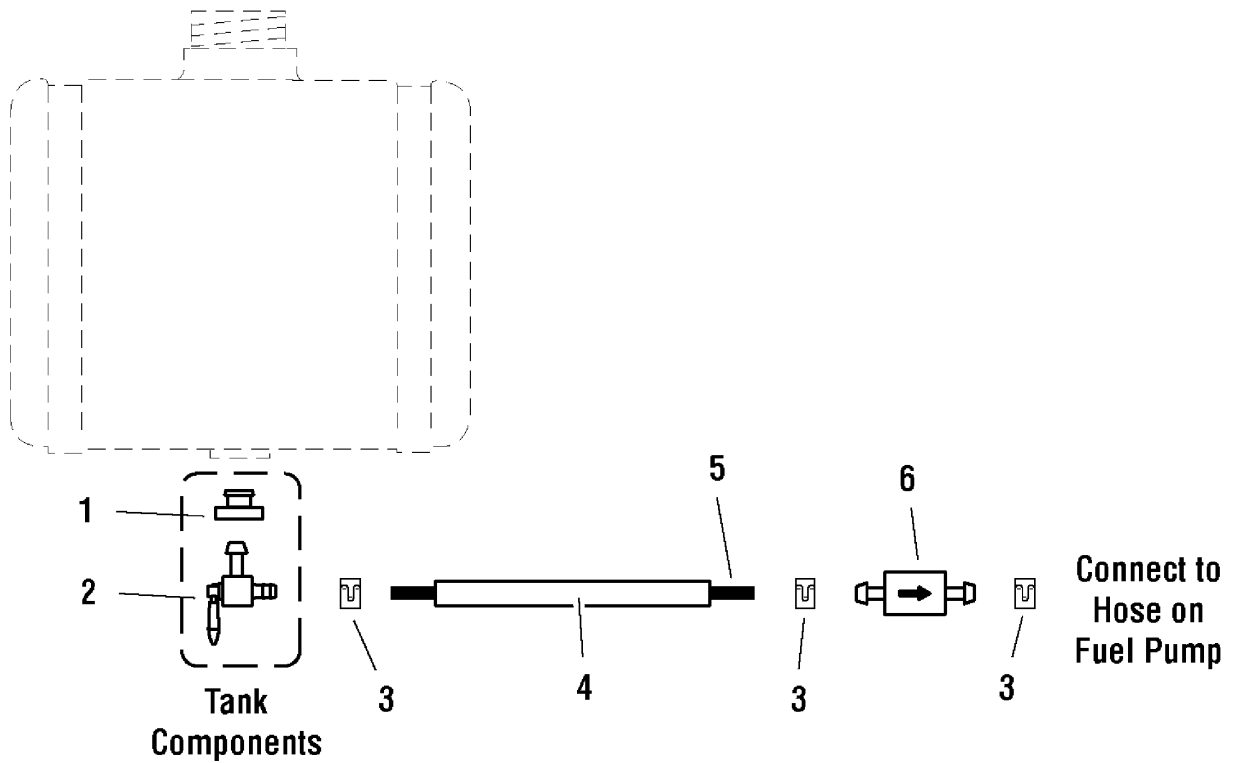
5901045 (CE) (HW32KAV15CE)

5901044 (HW36KAV15)

5901041 (CE) (HW36KAV15CE)

Fuel Supply Hose & Tank Replacement Part Group

NOTE: Unless noted otherwise,
use the standard hardware torque
specification chart.



The above parts group applies to the following Mfg. Nos.:

5901045 (CE) (HW32KAV15CE)

5901044 (HW36KAV15)

5901041 (CE) (HW36KAV15CE)

Fuel Supply Hose & Tank Replacement Part Group

REF NO.	PART NO.	QTY.	DESCRIPTION
1	5022151	1	RUBBER BUSHING
2	5022152	1	FUEL SHUTOFF VALVE
3	5020835	4	CLAMP, Hose
4	5050833X20	1	WIRE LOOM, 20"
5	5050831X21	1	1/4" Fuel Line, 21" Long
6	5021178X3	1	FUEL FILTER

Footnotes

The above parts group applies to the following Mfg. Nos.:

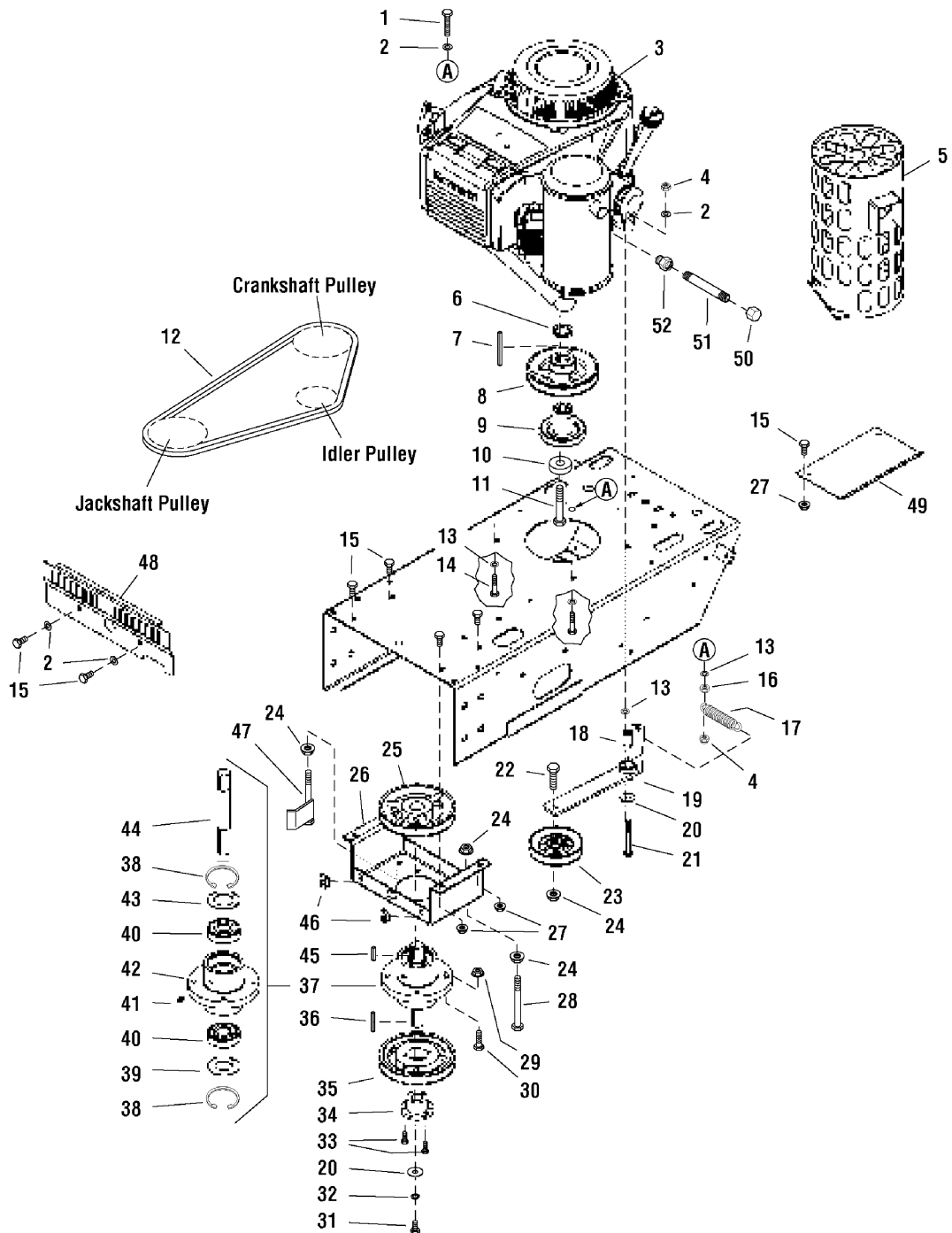
5901045 (CE) (HW32KAV15CE)

5901044 (HW36KAV15)

5901041 (CE) (HW36KAV15CE)

Engine & PTO Group - Kawasaki

NOTE: Unless noted otherwise,
use the standard hardware torque
specification chart.



The above parts group applies to the following Mfg. Nos.:

5901045 (CE) (HW32KAV15CE)

5901044 (HW36KAV15)

5901041 (CE) (HW36KAV15CE)

Engine & PTO Group - Kawasaki

REF NO.	PART NO.	QTY.	DESCRIPTION
1	5025055X16	1	BOLT, 5/16-18 x 2 TFL
2	5025155	6	WASHER, 5/16" SAE
3	5023066	1	ENGINE, 15HP Kawasaki V-Twin (Model FH430V)
4	5025057	4	NUT, 5/16-18 Hex Nylon Lock
5	5402840B	1	MUFFLER GUARD (CE models only)
6	5042620	1	SPACER, 1.13 x 1.50 x .19
7	5050407X9	1	KEY, 1/4 SQ. X 2-1/2
8	5020817	1	ENGINE PULLEY
9	5042597	1	PULLEY, Transmission Drive
10	5042132	1	SPACER, .45 x 1.62 x .37
11	5045938	1	CRANKSHAFT BOLT, 7/16 x 2-1/4
12	5021229	1	Belt, Jackshaft Drive
13	5025188	4	WASHER, 5/16" Internal Tooth Lock
14	5025011X14	2	BOLT, 5/16-18 x 1-3/4
15	5025011X6	8	BOLT, 5/16-18 x 3/4
16	5025032	1	NUT, 5/16-18 Hex
17	5020807	1	SPRING, Extension
18	5042134	1	SPACER, .32 x .75 x 1.06
19	5042917B	1	IDLER ARM ASSEMBLY
19	5020876B	1	BUSHING, Brass
20	5025164	2	WASHER, 5/16" Fender
21	5025011X24	1	BOLT, 5/16-18 x 3
22	5025013X12	1	BOLT, 3/8-16 x 1-1/2
23	5043628	1	IDLER PULLEY
24	5025128	5	NUT, 3/8-16 Hex Serrated Flange
25	5041478	1	SPINDLE PULLEY
26	5043591	1	JACKSHAFT MOUNT
27	5025127	6	NUT, 5/16-18 Hex Small Serrated Flange
28	5025013X40	1	BOLT, 3/8-16 x 5
29	5025139	4	NUT, 5/16-18 Hex Large Serrated Flange
30	5025011X10	4	BOLT, 5/16-18 x 1-1/4
31	5025012X6	1	BOLT, 5/16-24 x 3/4
32	5025170	1	WASHER, 5/16" Lock
33	5025010X8	2	BOLT, 1/4-20 x 1
34	5021241	1	BUSHING, Tapered Hub
35	5020814	1	PULLEY, Spindle
36	5050403X8	1	KEY, 3/16 SQ. X 1-1/4
37	5030474	1	JACKSHAFT SPINDLE ASSEMBLY, Complete
38	5020866	2	SNAP RING, Internal
39	5041672	1	SPINDLE WASHER, Bottom
40	5020828	2	BEARING

Footnotes

- See your local Kawasaki engine dealer for parts & service.

The above parts group applies to the following Mfg. Nos.:

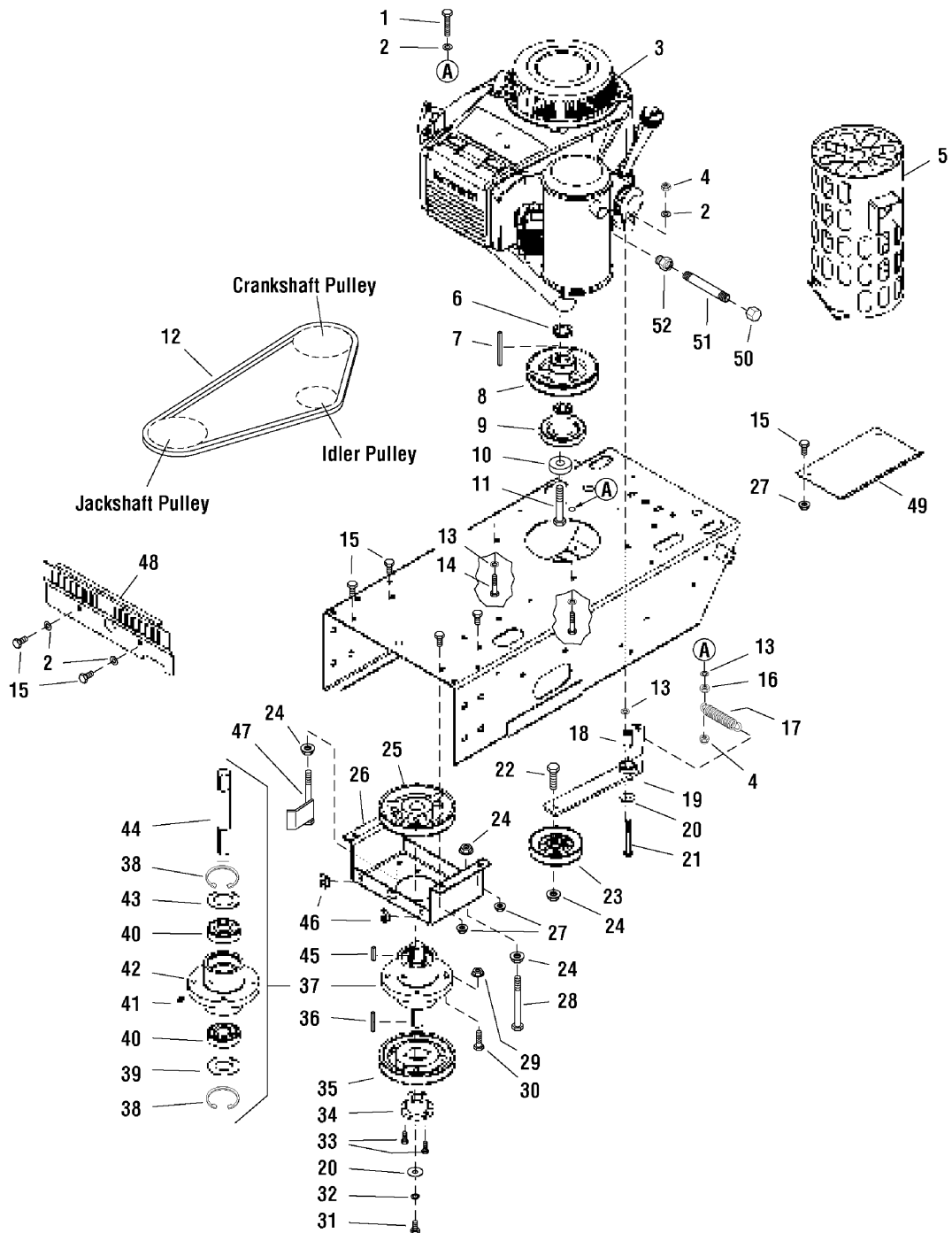
5901045 (CE) (HW32KAV15CE)

5901044 (HW36KAV15)

5901041 (CE) (HW36KAV15CE)

Engine & PTO Group - Kawasaki

NOTE: Unless noted otherwise,
use the standard hardware torque
specification chart.



The above parts group applies to the following Mfg. Nos.:

5901045 (CE) (HW32KAV15CE)

5901044 (HW36KAV15)

5901041 (CE) (HW36KAV15CE)

Engine & PTO Group - Kawasaki

REF NO.	PART NO.	QTY.	DESCRIPTION
41	5020095	1	GREASE FITTING
42	5030468	1	SPINDLE HOUSING
43	5041653	1	SPINDLE WASHER, Top
44	5042660	1	SHAFT, Spindle
45	5050407X1	1	KEY, 1/4 SQ. X 1
46	5022308	2	BODY CLIP, 5/16-18
47	5042635B	1	BELT GUIDE
48	5045367B	1	JACKSHAFT GUARD
49	5042538B	1	HEAT SHIELD
50	5021466	1	CAP, 3/8 NPT
51	5021707	1	NIPPLE, 3/8 NPT x 4-1/2
52	5022234	1	ADAPTER, Oil Drain

Footnotes

- See your local Kawasaki engine dealer for parts & service.

The above parts group applies to the following Mfg. Nos.:

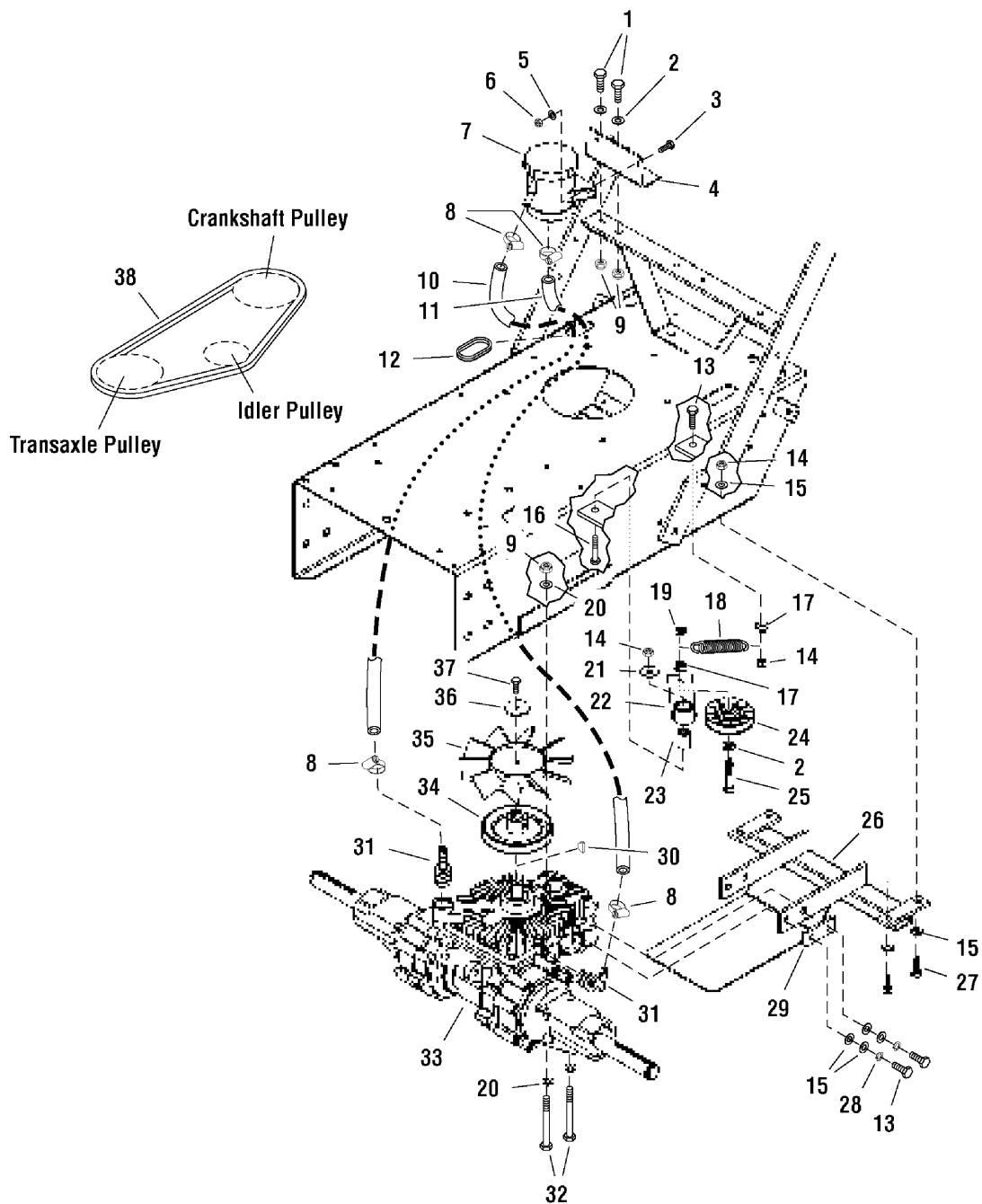
5901045 (CE) (HW32KAV15CE)

5901044 (HW36KAV15)

5901041 (CE) (HW36KAV15CE)

Transaxle Drive Group

NOTE: Unless noted otherwise, use the standard hardware torque specification chart.



The above parts group applies to the following Mfg. Nos.:

5901045 (CE) (HW32KAV15CE)

5901044 (HW36KAV15)

5901041 (CE) (HW36KAV15CE)

Transaxle Drive Group

REF NO.	PART NO.	QTY.	DESCRIPTION
1	5025013X8	2	BOLT, 3/8-16 x 1
2	5025156	3	WASHER, 3/8" SAE
3	5025010X6	2	BOLT, 1/4-20 x 3/4
4	5049390B	1	BRACKET, Reservoir Mount
5	5025154	2	WASHER, 1/4" SAE
6	5025095	2	NUT, 1/4-20 Hex Nylon Lock
7	5021491	1	RESERVOIR, Hydraulic
8	5021392	4	CLAMP, #6 Hose
9	5025096	6	NUT, 3/8-16 Hex Nylon Lock
10	5050860X26	1	HOSE, 26" Left Transmission Feed
11	5050860X31	1	HOSE, 31"
12	5021397	1	GROMMET, 1-1/4"
13	5025011X10	5	BOLT, 5/16-18 x 1-1/4
14	5025057	6	NUT, 5/16-18 Hex Nylon Lock
15	5025155	16	WASHER, 5/16" SAE
16	5025011X14	1	BOLT, 5/16-18 x 1-3/4
17	5025139	2	NUT, 5/16-18 Hex Large Serrated Flange
18	5020807	1	SPRING, Extension
19	5025100	1	NUT, 3/8-16 Hex Side Lock
20	5025293	8	WASHER, 3/8" GD9
21	5025164	1	WASHER, 5/16" Fender
22	5042531B	1	IDLER ARM ASSEMBLY
22	5020876B	1	BUSHING, Brass
23	5042134	1	SPACER, .32 x .75 x 1.06
24	5043627	1	IDLER PULLEY
25	5025013X16	1	BOLT, 3/8-16 x 2
26	5044734B	1	TRANSMISSION BRACE
27	5025011X8	4	BOLT, 5/16-18 x 1
28	5025170	4	WASHER, 5/16" Lock
29	5042646	2	BRACE, Hydro Spacer
30	5021084	1	KEY, #61 Woodruff
31	5021423X1	2	FITTING, 90 Degree
32	5025013X28	4	BOLT, 3/8-16 x 3-1/2
33	5021469	1	TRANSAXLE (model 751)
34	5021476	1	TRANSMISSION INPUT PULLEY
35	5023200	1	FAN
36	5044577	1	WASHER, .265 x 1.50 x .109
37	5025198X6	1	BOLT, Loctite Patch, 1/4-20 x 3/4
38	5021230	1	Belt, Transmission Drive

Footnotes

The above parts group applies to the following Mfg. Nos.:

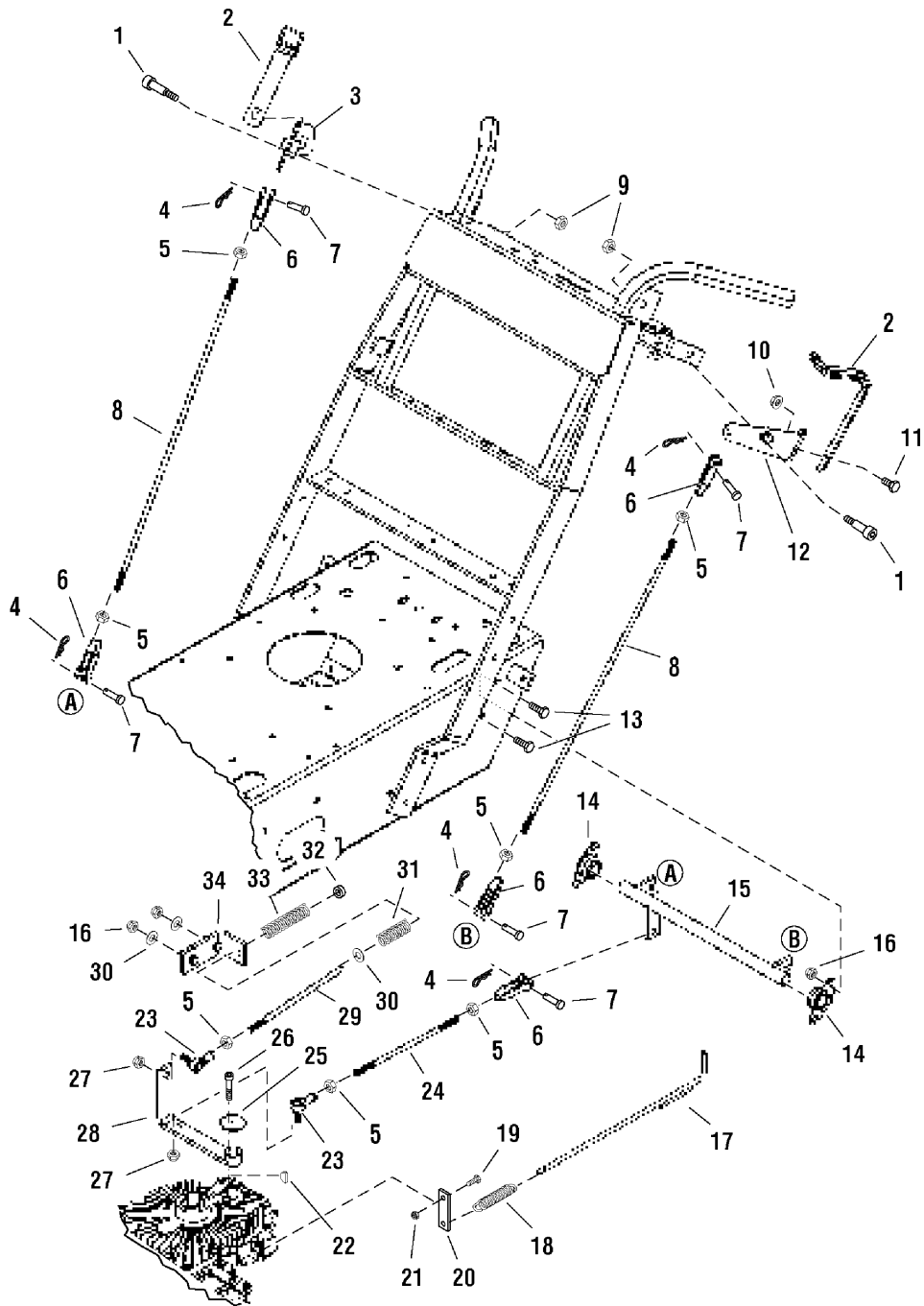
5901045 (CE) (HW32KAV15CE)

5901044 (HW36KAV15)

5901041 (CE) (HW36KAV15CE)

Motion Control Group

NOTE: Unless noted otherwise,
use the standard hardware torque
specification chart.



The above parts group applies to the following Mfg. Nos.:

5901045 (CE) (HW32KAV15CE)

5901044 (HW36KAV15)

5901041 (CE) (HW36KAV15CE)

Motion Control Group

REF NO.	PART NO.	QTY.	DESCRIPTION
1	5025223	2	SHOULDER BOLT, 1/2 x 1
2	5048547	2	THUMB CONTROL LEVER, Complete
2	5025510	*	FOAM GRIP
3	5048544B	1	PIVOT CONTROL - RH
4	5025210	5	HAIRPIN CLIP
5	5025033	7	NUT, 5/16-24 Hex
6	5020979	5	CLEVIS, 5/16-24, Plastic
7	5025213X8	4	CLEVIS PIN, 5/16 x 1
8	5042554	2	ROD, Thumb Control
9	5025046	2	NUT, 3/8-16 Hex Top Lock
10	5025127	2	NUT, 5/16-18 Hex Small Serrated Flange
11	5025011X6	2	BOLT, 5/16-18 x 3/4
12	5048545B	1	PIVOT CONTROL - LH
13	5025011X8	4	BOLT, 5/16-18 x 1
14	5021098	2	BEARING, Flange
15	5042533B	1	ROD, Transmission Control
16	5025057	4	NUT, 5/16-18 Hex Nylon Lock
17	5042638B	1	DUMP VALVE ROD
18	5020639	1	SPRING, Extension
19	5025010X8	1	BOLT, 1/4-20 x 1
20	5042636	1	DUMP VALVE EXTENSION
21	5025095	1	NUT, 1/4-20 Hex Nylon Lock
22	5020149	1	KEY, #3 Woodruff
23	5021170	2	BALL JOINT, 5/16-24 Female Studded
24	5042924	1	ROD, Control
25	5044577	1	WASHER, .265 x 1.50 x .109
26	5025269	1	BOLT, Allen Head, 1/4-20 x 1-1/2
27	5025045	2	NUT, 5/16-24, Hex Nylon Lock
28	5042537B	1	CONTROL ARM
29	5042551	1	ROD, Neutral
30	5025155	3	WASHER, 5/16" SAE
31	5021004	1	SPRING, Compression
32	5020047	1	COLLAR, 5/16" Set
33	5020637	1	SPRING, Compression
34	5042550B	1	NEUTRAL BRACKET

Footnotes

The above parts group applies to the following Mfg. Nos.:

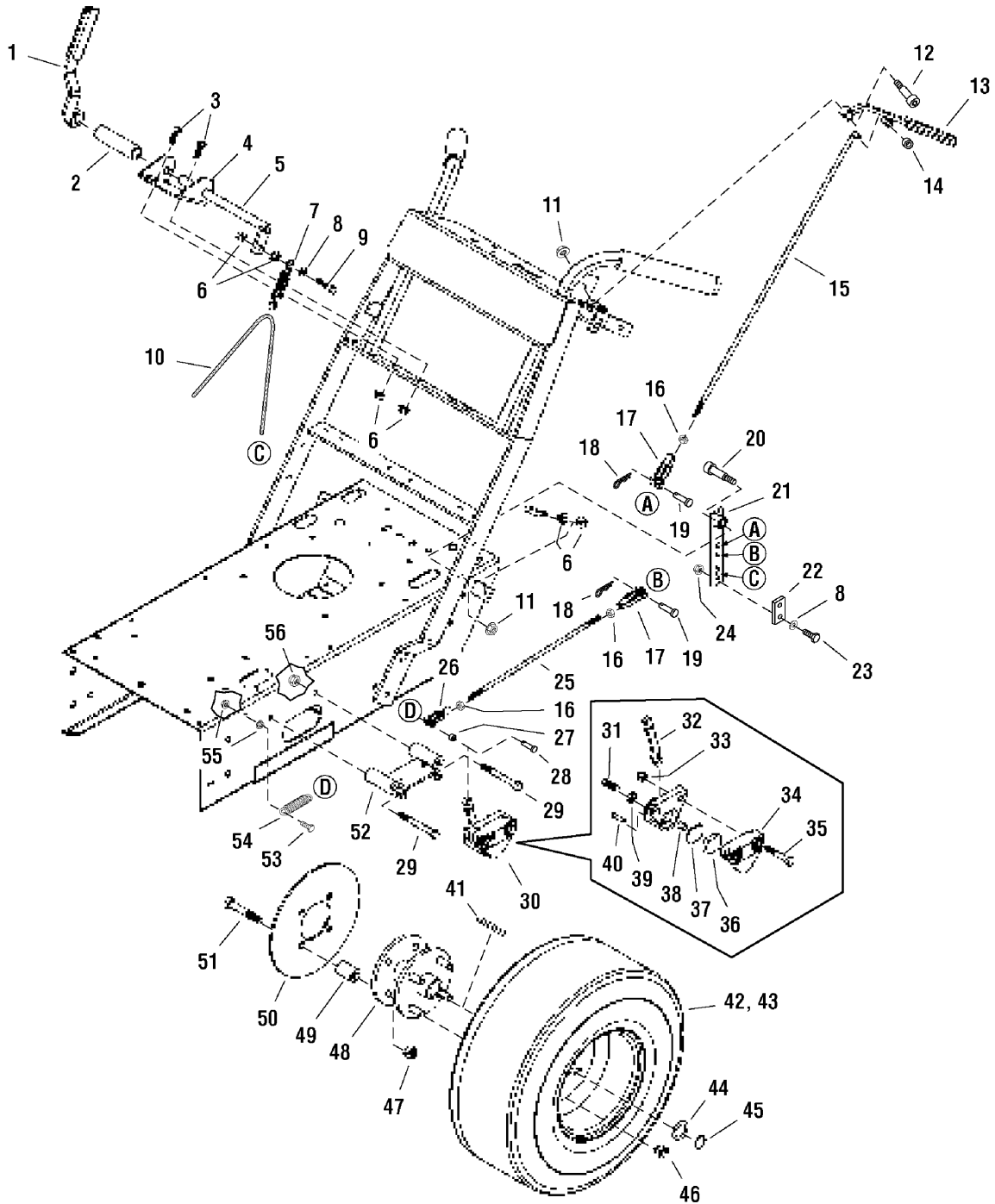
5901045 (CE) (HW32KAV15CE)

5901044 (HW36KAV15)

5901041 (CE) (HW36KAV15CE)

Parking Brake Group

NOTE: Unless noted otherwise, use the standard hardware torque specification chart.



The above parts group applies to the following Mfg. Nos.:

5901045 (CE) (HW32KAV15CE)

5901044 (HW36KAV15)

5901041 (CE) (HW36KAV15CE)

Parking Brake Group

REF NO.	PART NO.	QTY.	DESCRIPTION
1	5044625B	1	PARKING BRAKE HANDLE
1	5025510	*	FOAM GRIP
2	5045477	1	COVER, Brake Rod
3	5025011X8	2	BOLT, 5/16-18 x 1
4	5042627B	1	PARKING BRAKE MOUNT
5	5042633B	1	PARKING BRAKE SHAFT
6	5025139	8	NUT, 5/16-18 Hex Large Serrated Flange
7	5021242	1	SPRING, Extension
8	5025155	5	WASHER, 5/16" SAE
9	5025011X12	1	BOLT, 5/16-18 x 1-1/2
10	50823-3	1	WIRE CABLE, 31-1/2
11	5025128	4	NUT, 3/8-16 Hex Serrated Flange
12	5025220	2	SHOULDER BOLT, 1/2 x 1-1/2
13	5041982B	2	BRAKE HANDLE
13	5025510	*	FOAM GRIP
14	5020047	2	COLLAR, 5/16" Set
15	5042547	2	ROD, Brake Linkage
16	5025033	6	NUT, 5/16-24 Hex
17	5020979	4	CLEVIS, 5/16-24, Plastic
18	5025210	4	HAIRPIN CLIP
19	5025213X8	4	CLEVIS PIN, 5/16 x 1
20	5025223	2	SHOULDER BOLT, 1/2 x 1
21	5042548B	2	BRAKE PIVOT
22	5042624	2	CABLE CLAMP
23	5025011X10	4	BOLT, 5/16-18 x 1-1/4
24	5025057	4	NUT, 5/16-18 Hex Nylon Lock
25	5042555	2	ROD, Linkage
26	5020980	2	CLEVIS, 5/16-24, Steel
27	5021878	2	BUSHING
28	5025212X7	2	CLEVIS PIN, 1/4 x 7/8
29	5025013X28	4	BOLT, 3/8-16 x 3-1/2
30	5020968	1	BRAKE CALIPER ASSEMBLY, LH, Complete (Includes Ref No. 31 - 40)
30	5020969	1	BRAKE CALIPER ASSEMBLY, RH, Complete (Includes Ref No. 31 - 40, Not Shown)
31	5021473	1	ADJUSTER BOLT
32	5021038	1	LEVER
33	5025096	2	NUT, 3/8-16 Hex Nylon Lock
34	5021088	1	ANVIL
35	5025013X18	2	BOLT, 3/8-16 x 2-1/4
36	5021010	1	BRAKE PAD
37	5021335	1	BACK PLATE
38	5021470	1	ACTUATOR PIN

Footnotes

The above parts group applies to the following Mfg. Nos.:

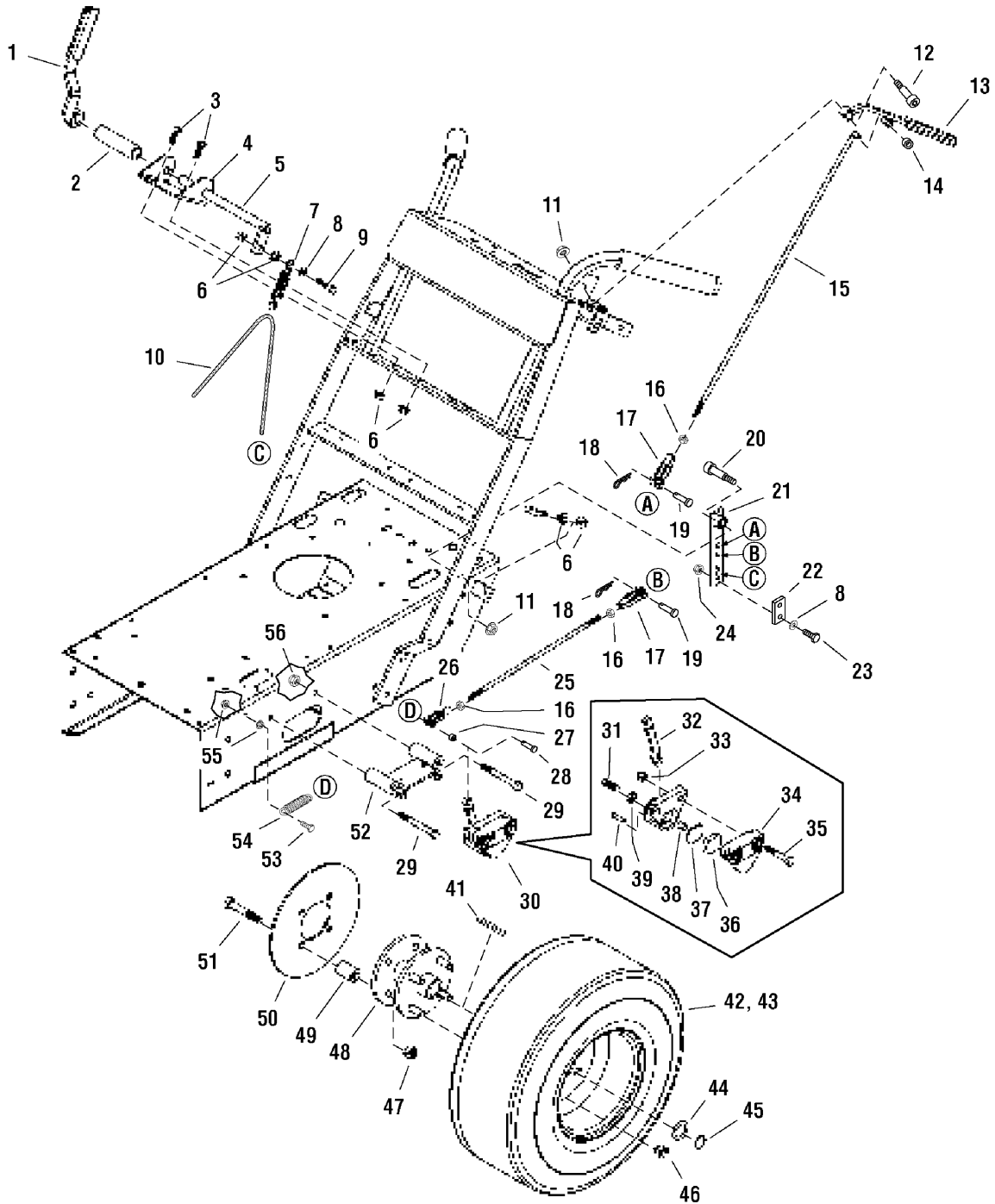
5901045 (CE) (HW32KAV15CE)

5901044 (HW36KAV15)

5901041 (CE) (HW36KAV15CE)

Parking Brake Group

NOTE: Unless noted otherwise, use the standard hardware torque specification chart.



The above parts group applies to the following Mfg. Nos.:

5901045 (CE) (HW32KAV15CE)

5901044 (HW36KAV15)

5901041 (CE) (HW36KAV15CE)

Parking Brake Group

REF NO.	PART NO.	QTY.	DESCRIPTION
39	5021472	1	JAM NUT
40	5021471	1	GROOVE PIN
41	5050407X9	2	KEY, 1/4 SQ. X 2-1/2
42	5021207S	2	WHEEL & TIRE ASSEMBLY, 18 x 7.50 x 8, Silver
42	5021345	*	WHEEL, 6 x 8
42	5021215	*	TIRE, Rear, 18 x 7.5 x 8
43	5020604S	2	TIRE ASSM, 16 x 6.50 x 8, Silver (CE models only)
43	5020616	*	Rim Only
43	5020615	*	TUBE
43	5020702	*	TIRE, 16 x 6.5 x 8
44	5020928	2	SHIM
45	5021210	2	RING, Retaining
46	5020601	8	LUG NUT, 1/2-20
47	5025098	4	NUT, 1/2-20 Hex Nylon Lock
48	5042590	2	DRIVE HUB
49	5042618	8	BRAKE DISC SPACER
50	5042526	2	BRAKE DISC
51	5025018X24	8	BOLT, 1/2-20 x 3
52	5042595B	2	BRAKE CALIPER MOUNT
53	5025010X8	2	BOLT, 1/4-20 x 1
54	5020639	2	SPRING, Extension
55	5025126	4	NUT, 1/4-20 Hex Serrated Flange
56	5025056	4	NUT, 1/2-13 Hex Nylon Lock

Footnotes

The above parts group applies to the following Mfg. Nos.:

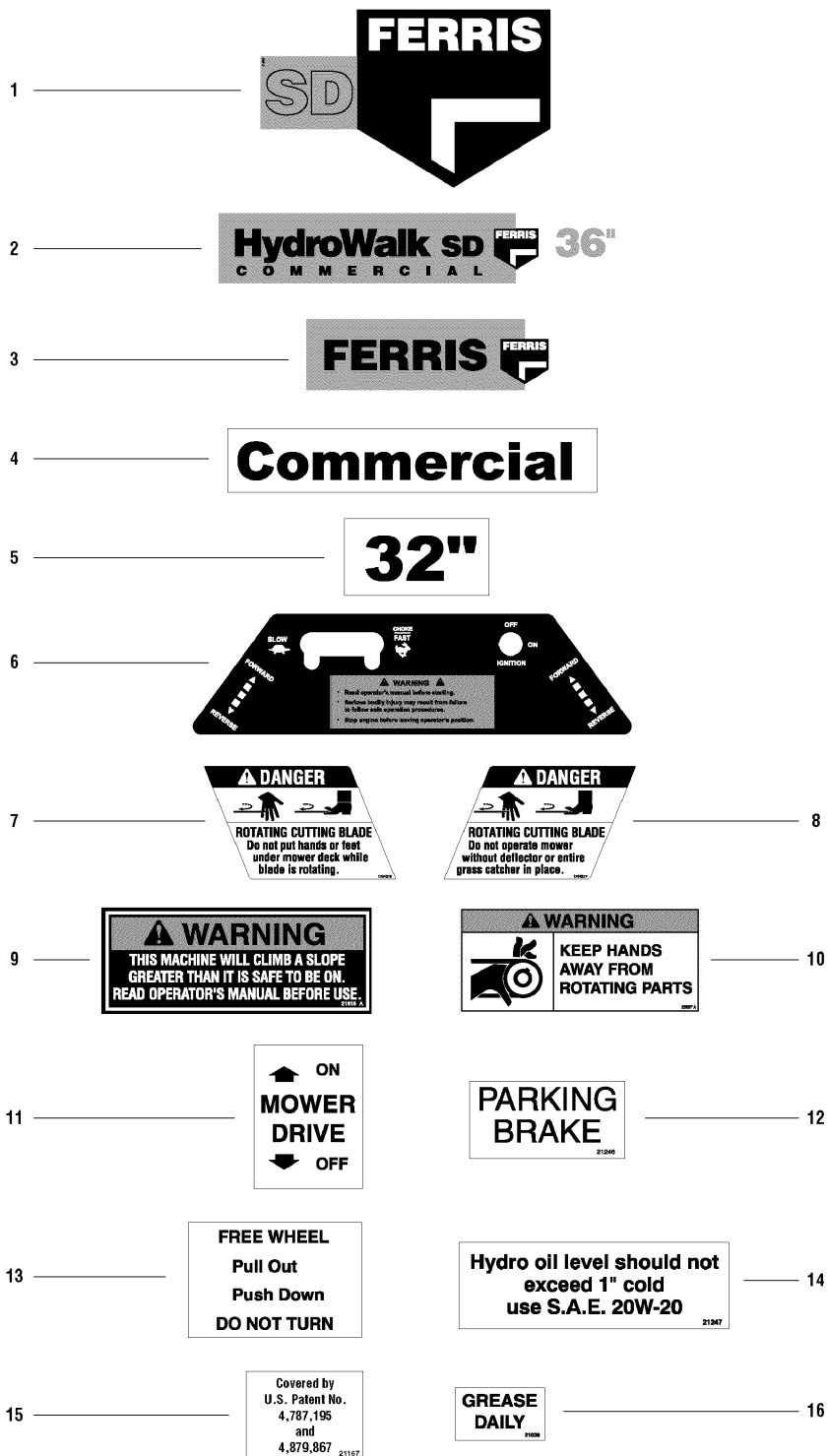
5901045 (CE) (HW32KAV15CE)

5901044 (HW36KAV15)

5901041 (CE) (HW36KAV15CE)

Decals - Brand, Model, Safety & Operation

NOTE: Unless noted otherwise, use the standard hardware torque specification chart.



The above parts group applies to the following Mfg. Nos.:

5901045 (CE) (HW32KAV15CE)

5901044 (HW36KAV15)

5901041 (CE) (HW36KAV15CE)

Decals - Brand, Model, Safety & Operation

REF NO.	PART NO.	QTY.	DESCRIPTION
1	5022518		DECAL, Ferris Logo, SD
2	5022519		DECAL, HydroWalk
3	5022560		DECAL, Ferris Text Logo
4	5020846		DECAL, Commercial (32" model only)
5	5021387		DECAL, 32"
6	5021243		DECAL, HW Dash
7	1704276		DECAL, Danger (Hand Under Deck)
8	1704277		DECAL, Danger (Chute In Place)
9	5021818		DECAL, Warning, Machine Will Climb
10	5020337		DECAL, Warning
11	5020940		DECAL, Mower Drive On / Off
12	5021246		DECAL, Parking Brake
13	5021267		DECAL, Free Wheel
14	5021247		DECAL, Hydro Oil Level
15	5021167		DECAL, Walker Patent Number
16	5021036		DECAL, Grease Daily

Footnotes

The above parts group applies to the following Mfg. Nos.:

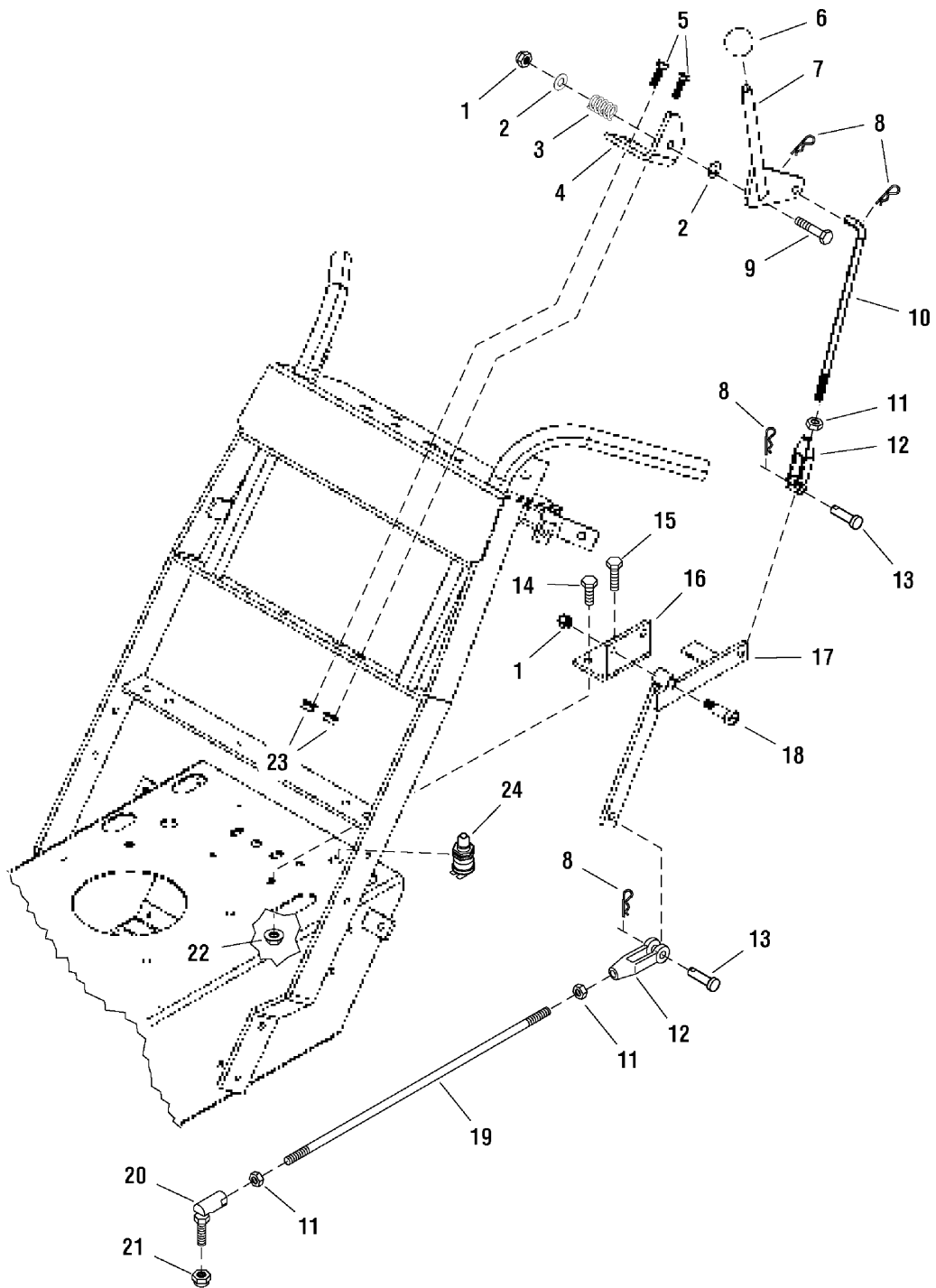
5901045 (CE) (HW32KAV15CE)

5901044 (HW36KAV15)

5901041 (CE) (HW36KAV15CE)

Blade Engagement Group

NOTE: Unless noted otherwise,
use the standard hardware torque
specification chart.



The above parts group applies to the following Mfg. Nos.:

5901045 (CE) (HW32KAV15CE)

5901044 (HW36KAV15)

5901041 (CE) (HW36KAV15CE)

Blade Engagement Group

REF NO.	PART NO.	QTY.	DESCRIPTION
1	5025096	2	NUT, 3/8-16 Hex Nylon Lock
2	5025156	2	WASHER, 3/8" SAE
3	5020808	1	SPRING, Compression
4	5041491B	1	BRACKET, Shifter
5	5025011X8	2	BOLT, 5/16-18 x 1
6	5021733	1	KNOB
7	5042557B	1	LEVER, Blade Engagement
8	5025210	4	HAIRPIN CLIP
9	5025013X14	1	BOLT, 3/8-16 x 1-3/4
10	5042380	1	ROD, Blade Engagement
11	5025035	3	NUT, 3/8-24 Hex
12	5021171	2	CLEVIS, 3/8-24, Plastic
13	5025214X8	2	CLEVIS PIN, 3/8 x 1
14	5025013X8	1	BOLT, 3/8-16 x 1
15	5025013X10	1	BOLT, 3/8-16 x 1-1/4
16	5044635B	1	PIVOT MOUNT
17	5044634B	1	BLADE ENGAGEMENT PIVOT
18	5025223	1	SHOULDER BOLT, 1/2 x 1
19	5042553	1	ROD, Blade Engage
20	5020805	1	BALL JOINT, 3/8" Female Studded
21	5025097	1	NUT, 3/8-24 Hex Nylon Lock
22	5025128	2	NUT, 3/8-16 Hex Serrated Flange
23	5025139	2	NUT, 5/16-18 Hex Large Serrated Flange

Footnotes

The above parts group applies to the following Mfg. Nos.:

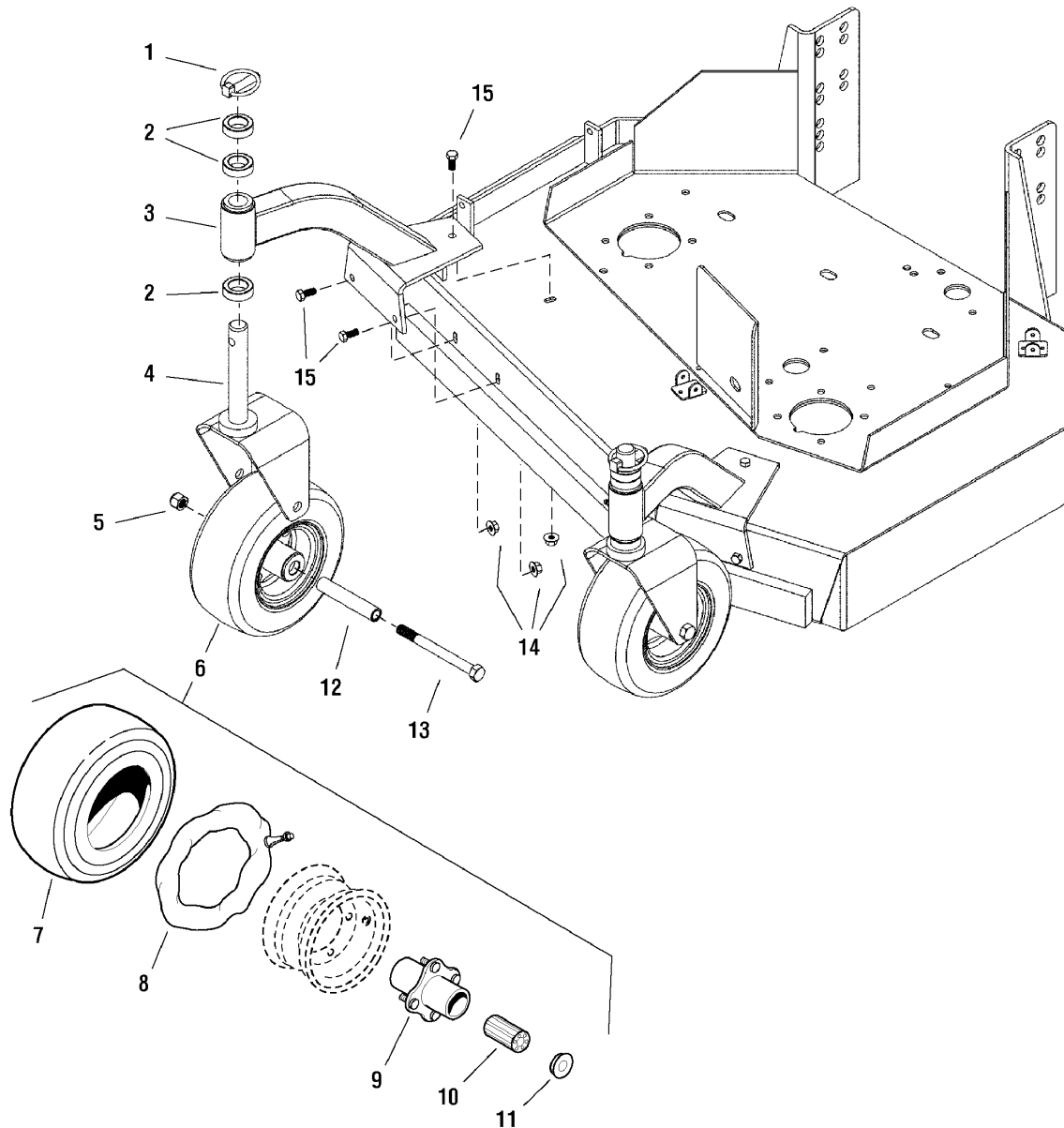
5901045 (CE) (HW32KAV15CE)

5901044 (HW36KAV15)

5901041 (CE) (HW36KAV15CE)

32" & 36" Mower Deck - Frame, Caster & Shield

NOTE: Unless noted otherwise,
use the standard hardware torque
specification chart.



The above parts group applies to the following Mfg. Nos.:

5901045 (CE) (HW32KAV15CE)

5901044 (HW36KAV15)

5901041 (CE) (HW36KAV15CE)

32" & 36" Mower Deck - Frame, Caster & Shield

REF NO.	PART NO.	QTY.	DESCRIPTION
1	5020655	2	PIN, Lynch
2	5041476	6	SPACER, 1.02 x 1.56 x .50
3	5043887	2	CASTER MOUNT, Complete
3	5021541	4	BUSHING, Flange
3	5020095	2	GREASE FITTING
4	5041702B	2	YOKE, Caster
5	5025056	2	NUT, 1/2-13 Hex Nylon Lock
6	5021181S	2	WHEEL & TIRE ASSEMBLY, Silver, 9 x 3.5 x 4, Complete (Includes Ref No. 7 - 11)
7	5021181X1	2	TIRE, Front, 9 x 3.5 x 4
8	5021181X2	2	TUBE
9	5021181SX3	2	HUB & BEARING ASSEMBLY, Complete, Silver (Includes Ref No. 10 & 11)
10	5021182	2	BEARING, Roller (1 per tire)
11	5021043	4	RETAINER, Bearing (2 per tire)
12	5041657	2	AXLE, Caster Wheel
13	5025017X44	2	BOLT, 1/2-13 x 5-1/2
14	5025139	6	NUT, 5/16-18 Hex Large Serrated Flange
15	5025011X6	6	BOLT, 5/16-18 x 3/4

Footnotes

The above parts group applies to the following Mfg. Nos.:

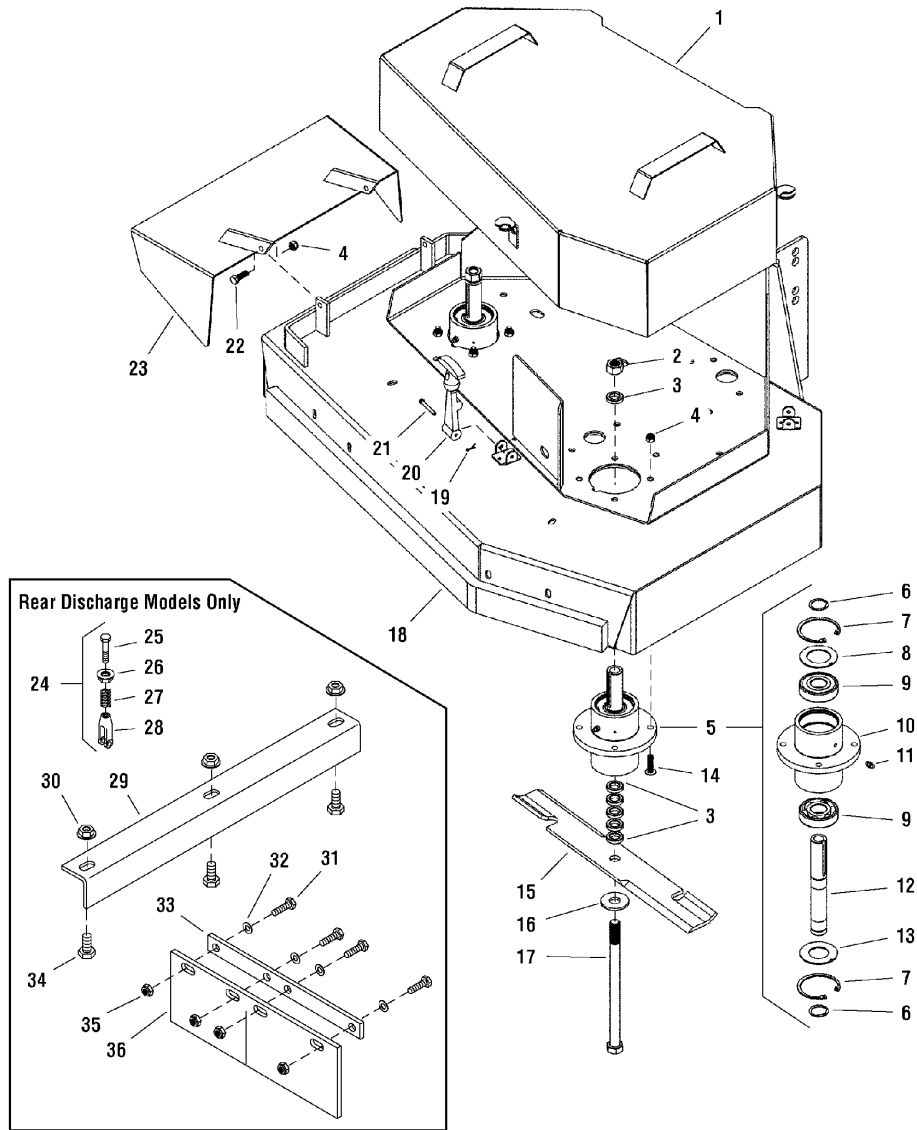
5901045 (CE) (HW32KAV15CE)

5901044 (HW36KAV15)

5901041 (CE) (HW36KAV15CE)

32" & 36" Mower Deck - Housing, Covers, Spindles & Blades

NOTE: Unless noted otherwise,
use the standard hardware torque
specification chart.



The above parts group applies to the following Mfg. Nos.:

5901045 (CE) (HW32KAV15CE)

5901044 (HW36KAV15)

5901041 (CE) (HW36KAV15CE)

32" & 36" Mower Deck - Housing, Covers, Spindles & Blades

REF NO.	PART NO.	QTY.	DESCRIPTION
1	5045373B	1	GUARD, 36"
1	5030575B	1	32" DECK GUARD
2	5025040	2	NUT, 5/8-11 Hex
3	5041477	12	SPACER, .63 x 1.06 x .23
4	5025057	10	NUT, 5/16-18 Hex Nylon Lock
5	5030301	3	SPINDLE ASSEMBLY, Complete
6	5041480	3	SPINDLE SHAFT
7	5020864	6	SNAP RING, External
8	5020866	6	SNAP RING, Internal
9	5041653	3	SPINDLE WASHER, Top
10	5020828	6	BEARING
11	5030293	3	SPINDLE HOUSING
12	5020095	3	GREASE FITTING
13	5041672	3	SPINDLE WASHER, Bottom
14	5023156	8	BOLT, Flange Head, 5/16-18 x 1-1/4
15	5021227	2	MOWER BLADE, 18" (36" mower)
15	5023271	2	MOWER BLADE, 18" SAND (36" Export mower)
15	5020843	2	MOWER BLADE, 16-1/4" (32" mower)
15	5023270	2	MOWER BLADE, 16-1/4" SAND (32" Export mower)
16	5025159	2	WASHER, 5/8" USS
17	5025019X76	2	BOLT, 5/8-11 x 9-1/2
18	5630840	1	36" MOWER HOUSING ASSEMBLY (Includes safety decals)
18	5030517B	1	36" REAR DISCHARGE MOWER HOUSING
18	5030744B	1	32" REAR DISCHARGE MOWER HOUSING
19	5020841X5	3	COTTER PIN (36" models)
19	5020841X5	2	COTTER PIN (32" model)
20	5020841X1	3	RUBBER LATCH (36" Side Discharge model only)
21	5020841X4	3	PIN, Clevis (36" models)
21	5020841X4	2	PIN, Clevis (32" model)
22	5025011X8	2	BOLT, 5/16-18 x 1
23	5042565B	1	DISCHARGE CHUTE
24	5060078	3	GUARD HOLD DOWN ASSEMBLY (36" model)
24	5060078	2	GUARD HOLD DOWN ASSEMBLY (32" model)
25	5025012X16	*	BOLT, 5/16-24 X 2 (Qty. (1) per assembly)
26	5025128	*	NUT, 3/8-16 Hex Serrated Flange (1 per assembly)
27	5045298	**	SPRING, Guard Hold Down (1 per assembly)
28	5020979	**	CLEVIS, 5/16-24, Plastic (1 per assembly)
29	5042734B	1	BAFFLE, 36"
29	5043614B	1	BAFFLE, 32"
30	5025128	3	NUT, 3/8-16 Hex Serrated Flange
31	5025011X8	4	BOLT, 5/16-18 x 1

Footnotes

The above parts group applies to the following Mfg. Nos.:

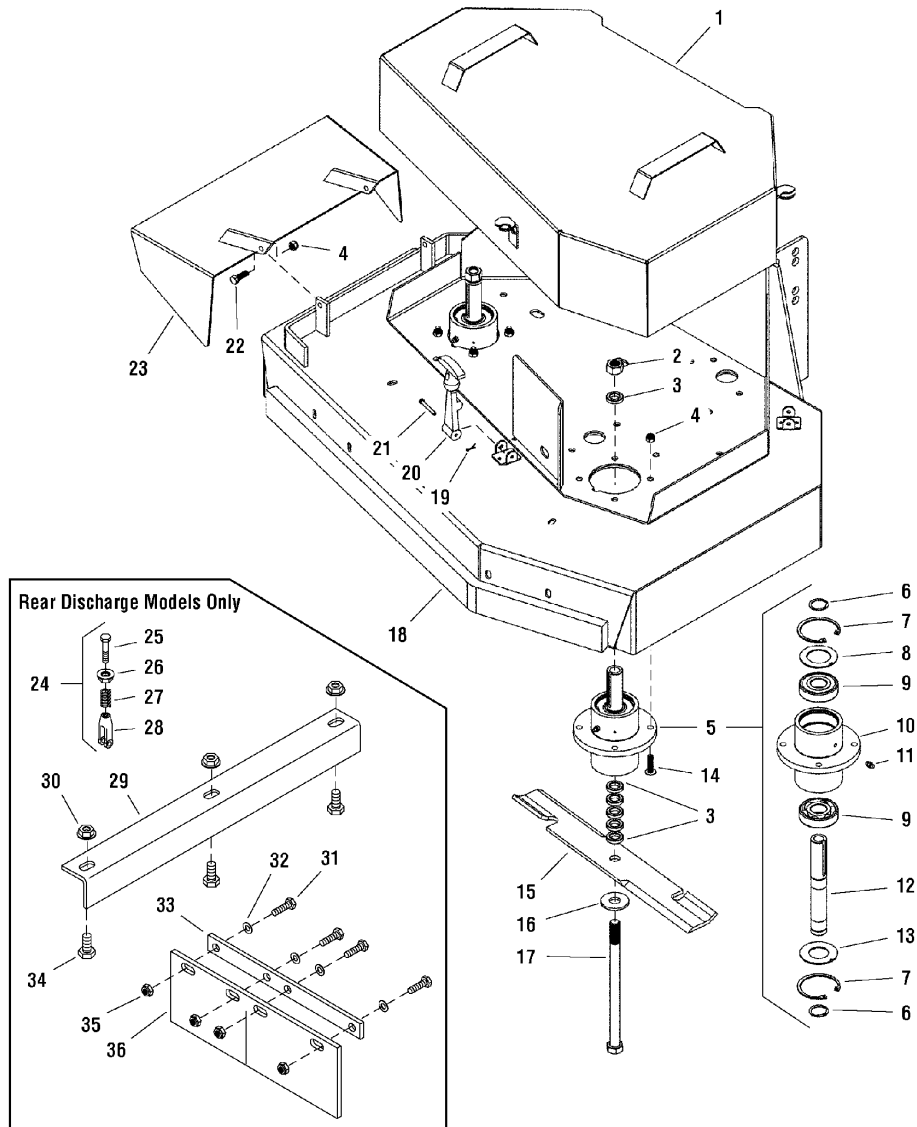
5901045 (CE) (HW32KAV15CE)

5901044 (HW36KAV15)

5901041 (CE) (HW36KAV15CE)

32" & 36" Mower Deck - Housing, Covers, Spindles & Blades

NOTE: Unless noted otherwise,
use the standard hardware torque
specification chart.



The above parts group applies to the following Mfg. Nos.:

5901045 (CE) (HW32KAV15CE)

5901044 (HW36KAV15)

5901041 (CE) (HW36KAV15CE)

32" & 36" Mower Deck - Housing, Covers, Spindles & Blades

REF NO.	PART NO.	QTY.	DESCRIPTION
32	5025155	4	WASHER, 5/16" SAE
33	5042736B	1	FLAP SUPPORT
34	5025013X6	3	BOLT, 3/8-16 x 3/4
35	5025057	4	NUT, 5/16-18 Hex Nylon Lock
36	5042974	1	RUBBER FLAP

Footnotes

The above parts group applies to the following Mfg. Nos.:

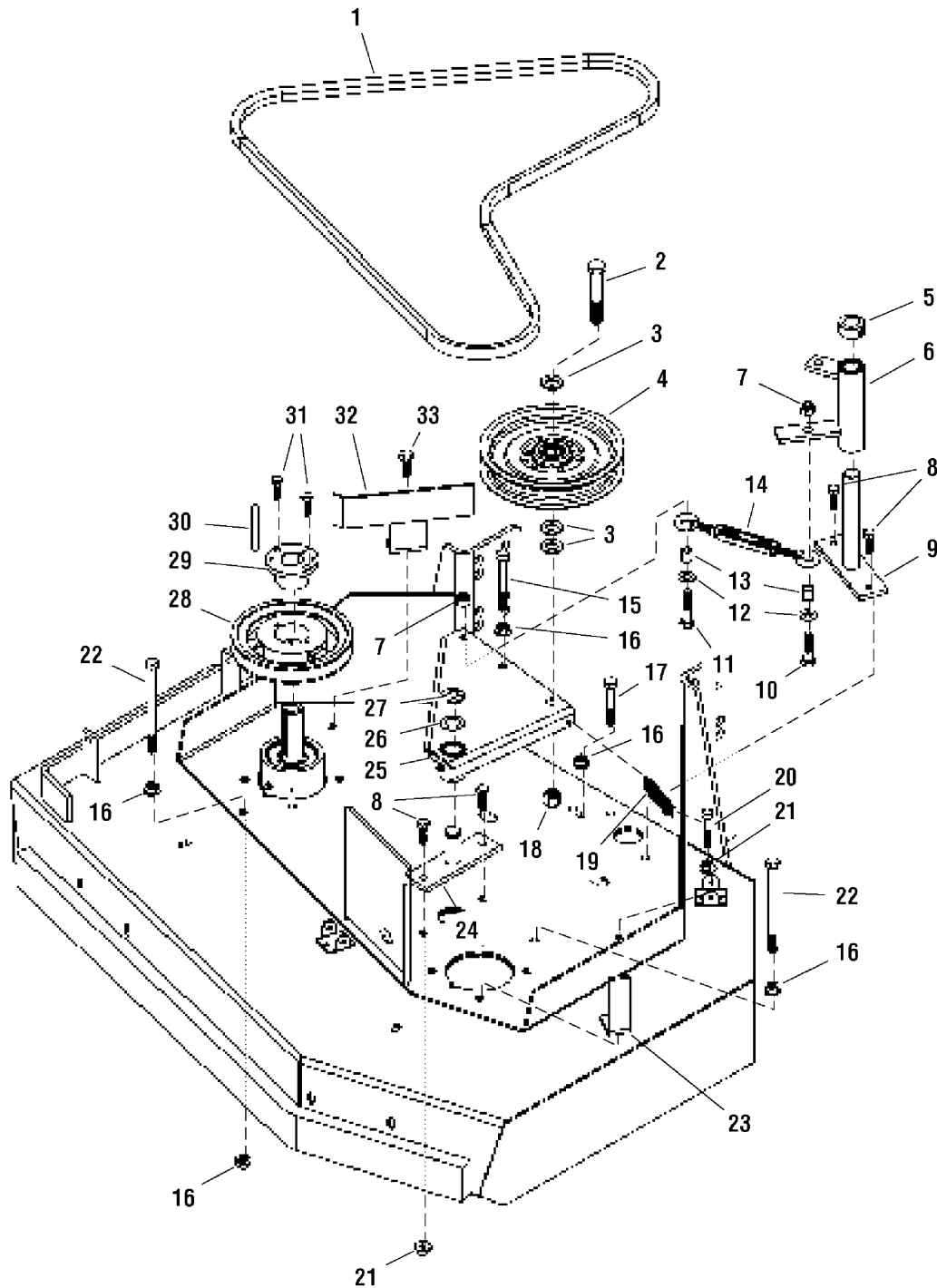
5901045 (CE) (HW32KAV15CE)

5901044 (HW36KAV15)

5901041 (CE) (HW36KAV15CE)

32" & 36" Mower Deck - Pulleys, Belt & Idler Arm

NOTE: Unless noted otherwise,
use the standard hardware torque
specification chart.



The above parts group applies to the following Mfg. Nos.:

5901045 (CE) (HW32KAV15CE)

5901044 (HW36KAV15)

5901041 (CE) (HW36KAV15CE)

32" & 36" Mower Deck - Pulleys, Belt & Idler Arm

REF NO.	PART NO.	QTY.	DESCRIPTION
1	5021251	1	BELT (36" models)
1	5021390	1	BELT (32" Deck)
2	5025018X24	1	BOLT, 1/2-20 x 3
3	5025158	3	WASHER, 1/2" SAE
4	5021096	1	PULLEY, Backside Idler (36" models)
4	5021369	1	IDLER PULLEY (32" Deck)
5	5010116	1	COLLAR, 3/4" Set
6	5042569B	1	BLADE ENGAGE BELL CRANK
6	5020875P	2	BUSHING, Plastic
7	5025096	2	NUT, 3/8-16 Hex Nylon Lock
8	5025011X8	4	BOLT, 5/16-18 x 1
8	5025011X6	4	BOLT, 5/16-18 x 3/4
9	5042560B	1	BLADE ENGAGE PIVOT
10	5025013X12	1	BOLT, 3/8-16 x 1-1/2
11	5025013X14	1	BOLT, 3/8-16 x 1-3/4
12	5025156	2	WASHER, 3/8" SAE
13	5041600	2	SLEEVE
14	5041852	1	TURNBUCKLE
15	5025013X24	1	BOLT, 3/8-16 x 3
16	5025128	8	NUT, 3/8-16 Hex Serrated Flange
17	5025013X18	1	BOLT, 3/8-16 x 2-1/4
18	5025098	1	NUT, 1/2-20 Hex Nylon Lock
19	5020639	1	SPRING, Extension
20	5025011X12	1	BOLT, 5/16-18 x 1-1/2
21	5025139	6	NUT, 5/16-18 Hex Large Serrated Flange
22	5025013X40	2	BOLT, 3/8-16 x 5
23	5042969B	1	BELT GUIDE (32" model only)
24	5041629B	1	IDLER MOUNT
25	5042563B	1	CLUTCH PIVOT PLATE
25	5020874	2	BUSHING
26	5025520X3	1	SHIM
27	5020863	1	C-CLIP
28	5020814	2	PULLEY, Spindle
29	5020819	2	BUSHING, Tapered Hub
30	5050407X9	2	KEY, 1/4 SQ. X 2-1/2
31	5025010X8	4	BOLT, 1/4-20 x 1
32	5042528B	1	BELT GUIDE
33	5025013X8	1	BOLT, 3/8-16 x 1

Footnotes

The above parts group applies to the following Mfg. Nos.:

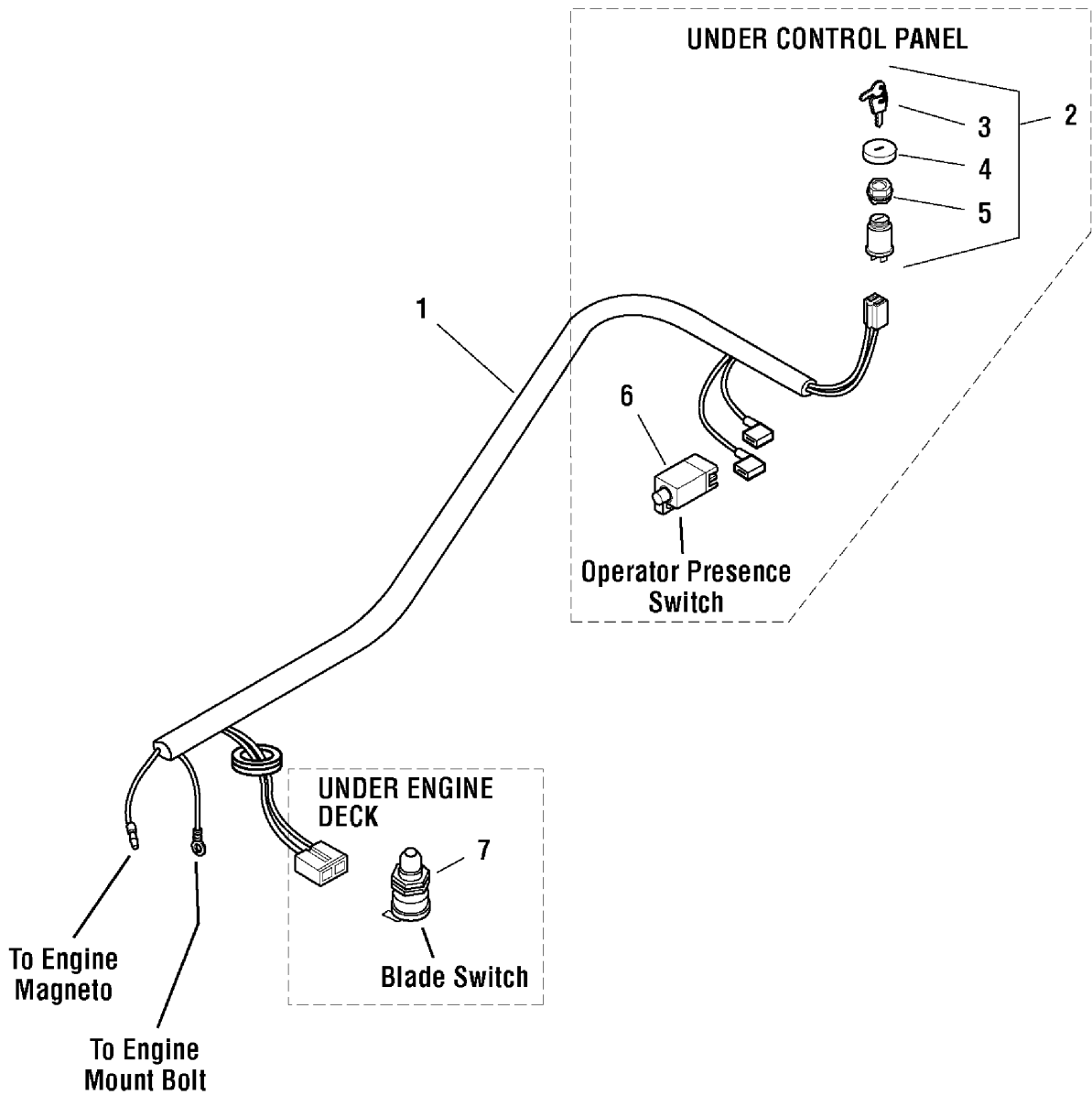
5901045 (CE) (HW32KAV15CE)

5901044 (HW36KAV15)

5901041 (CE) (HW36KAV15CE)

Electrical Group

NOTE: Unless noted otherwise,
use the standard hardware torque
specification chart.



The above parts group applies to the following Mfg. Nos.:

5901045 (CE) (HW32KAV15CE)

5901044 (HW36KAV15)

5901041 (CE) (HW36KAV15CE)

Electrical Group

REF NO.	PART NO.	QTY.	DESCRIPTION
1	5049411		WIRE HARNESS
2	5021842		SWITCH, Ignition, Complete Includes Ref No. 3 - 5
3	5022789		KEY, Ignition, Molded Set
4	5022790		COVER
5	5022791		PLASTIC NUT
6	5021769		SWITCH, Plunger, NC
7	5021737		SWITCH, Plunger, NC

Footnotes

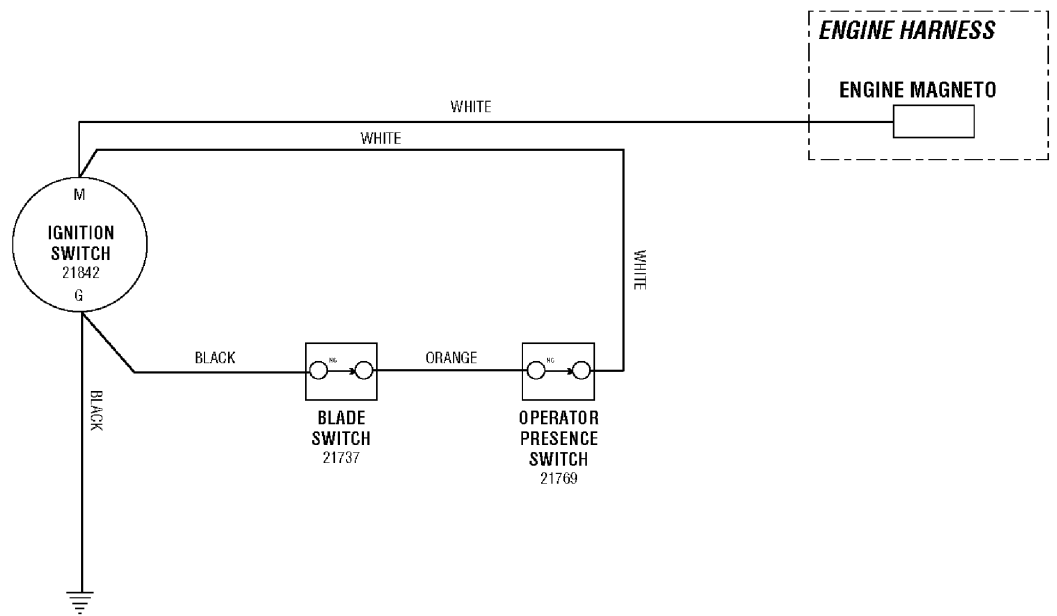
The above parts group applies to the following Mfg. Nos.:

5901045 (CE) (HW32KAV15CE)

5901044 (HW36KAV15)

5901041 (CE) (HW36KAV15CE)

IGNITION SWITCH	
POSITION	CIRCUIT MAKE
1. OFF	G & M
2. RUN	Open



The above parts group applies to the following Mfg. Nos.:

5901045 (CE) (HW32KAV15CE)

5901044 (HW36KAV15)

5901041 (CE) (HW36KAV15CE)

Hardware Identification & Torque Specifications

Common Hardware Types

Hex Head Capscrew



Washer



Carriage Bolt



Lockwasher



Hex Nut

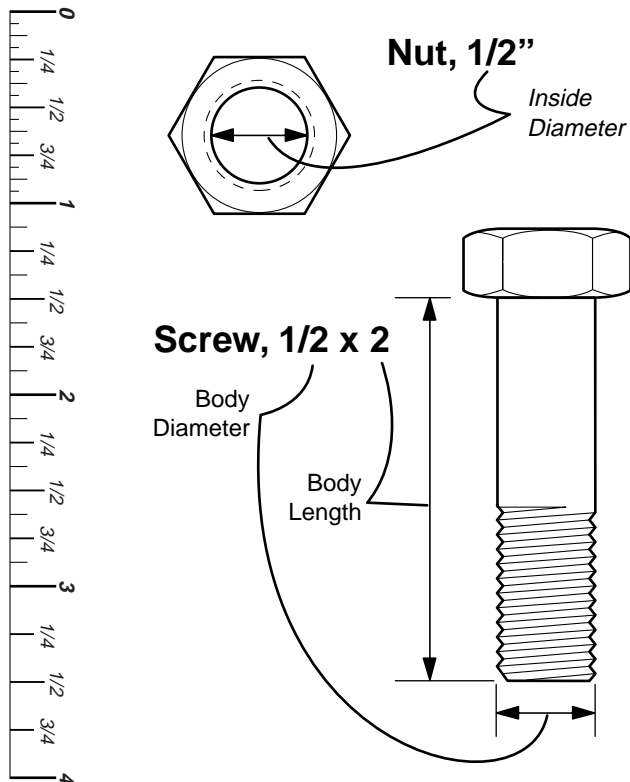


Standard Hardware Sizing

When a washer or nut is identified as $1/2''$, this is the *Nominal size*, meaning the *inside diameter* is $1/2$ inch; if a second number is present it represents the *threads per inch*

When bolt or capscrew is identified as $1/2 - 16 \times 2''$, this means the *Nominal size*, or *body diameter* is $1/2$ inch; the second number represents the *threads per inch* (16 in this example, and the final number is the *body length* of the bolt or screw (in this example 2 inches long).

The guides and ruler furnished below are designed to help you select the appropriate hardware and tools.



Torque Specification Chart

FOR STANDARD MACHINE HARDWARE (Tolerance $\pm 20\%$)

Hardware Grade	No Marks SAE Grade 2		SAE Grade 5		SAE Grade 8	
	in/lbs ft/lbs	Nm.	in/lbs ft/lbs	Nm.	in/lbs ft/lbs	Nm.
8-32	19	2.1	30	3.4	41	4.6
8-36	20	2.3	31	3.5	43	4.9
10-24	27	3.1	43	4.9	60	6.8
10-32	31	3.5	49	5.5	68	7.7
1/4-20	66	7.6	8	10.9	12	16.3
1/4-28	76	8.6	10	13.6	14	19.0
5/16-18	11	15.0	17	23.1	25	34.0
5/16-24	12	16.3	19	25.8	27	34.0
3/8-16	20	27.2	30	40.8	45	61.2
3/8-24	23	31.3	35	47.6	50	68.0
7/16-14	30	40.8	50	68.0	70	95.2
7/16-20	35	47.6	55	74.8	80	108.8
1/2-13	50	68.0	75	102.0	110	149.6
1/2-20	55	74.8	90	122.4	120	163.2
9/16-12	65	88.4	110	149.6	150	204.0
9/16-18	75	102.0	120	163.2	170	231.2
5/8-11	90	122.4	150	204.0	220	299.2
5/8-18	100	136	180	244.8	240	326.4
3/4-10	160	217.6	260	353.6	386	525.0
3/4-16	180	244.8	300	408.0	420	571.2
7/8-9	140	190.4	400	544.0	600	816.0
7/8-14	155	210.8	440	598.4	660	897.6
1-8	220	299.2	580	788.8	900	1,244.0
1-12	240	326.4	640	870.4	1,000	1,360.0

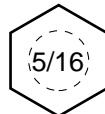
NOTES

- These torque values are to be used for all hardware excluding: locknuts, self-tapping screws, thread forming screws, sheet metal screws and socket head setscrews.
- Recommended seating torque values for locknuts:
 - for prevailing torque locknuts - use 65% of grade 5 torques.
 - for flange whizlock nuts and screws - use 135% of grade 5 torques.
- Unless otherwise noted on assembly drawings, all torque values must meet this specification.

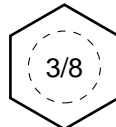
Wrench & Fastener Size Guide



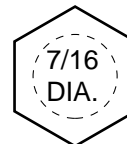
$1/4''$ Bolt or Nut
Wrench— $7/16''$



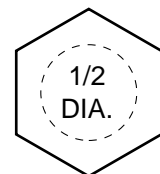
$5/16''$ Bolt or Nut
Wrench— $1/2''$



$3/8''$ Bolt or Nut
Wrench— $9/16''$



$7/16''$ Bolt or Nut
Wrench (Bolt)— $5/8''$
Wrench (Nut)— $11/16''$



$1/2''$ Bolt or Nut
Wrench— $3/4''$

Parts Manual

HydroWalk SD

Single-Drive Walk Behind Mow

IT IS THE POLICY OF FERRIS INDUSTRIES TO IMPROVE ITS PRODUCTS WHENEVER IT IS POSSIBLE AND PRACTICAL TO DO SO. WE RESERVE THE RIGHT TO MAKE CHANGES OR ADD IMPROVEMENTS AT ANY TIME WITHOUT INCURRING ANY OBLIGATION TO MAKE SUCH CHANGES ON PRODUCTS MANUFACTURED

Briggs and Stratton Yard Power Products Group

5375 North Main Street
Munnsville, NY 13409 USA
800-933-6175

www.ferrisindustries.com

© Copyright 2007 Briggs and Stratton Corporation
All Rights Reserved. Printed In USA.