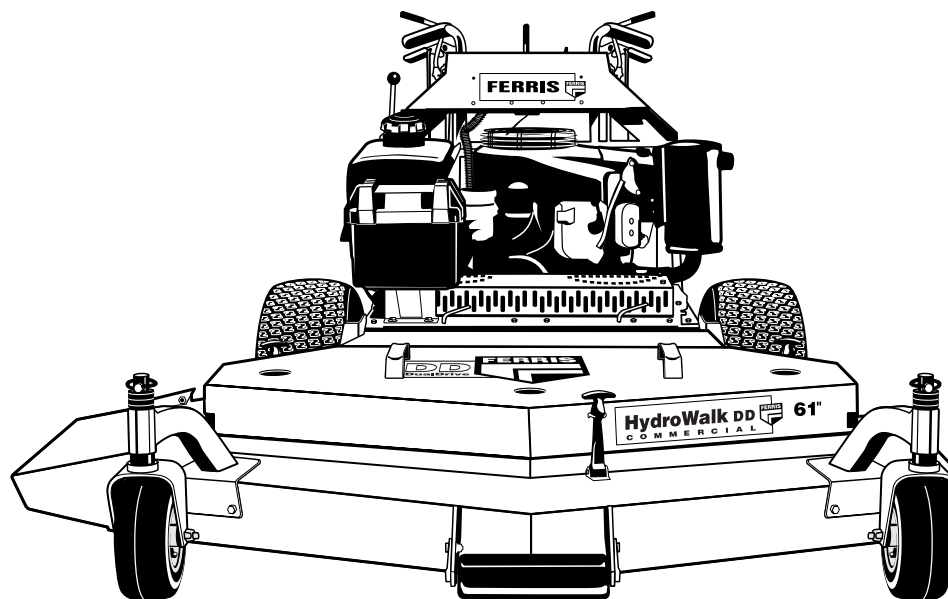




Parts Manual Hydro Walk DD Walk Behind Mower

Serial No.: 1233 & Above



Models:	Description:
5901024	14HP Kawasaki (DDSKA)
5900076	15HP Kawasaki V-Twin (DDSKAV15)
5900078	17HP Kawasaki V-Twin (DDSKAV17)
DDSKA	HydroWalk Dual-Drive, 17HP Kawasaki Electric Start
DDSKAE	HydroWalk Dual-Drive, 17HP Kawasaki Electric Start
DDSBV	HydroWalk Dual-Drive, 18HP Briggs & Stratton V-Twin
DDSBVE	HydroWalk Dual-Drive, 18HP Briggs & Stratton V-Twin Electric Start
5900080	23HP Kawasaki V-Twin (S/N: 1123 - 3584) (DDSKAV23)
5900215	48" Mower Deck (DDS48)
5900218	52" Mower Deck (DDS52)
5900222	52" Quick Adjust Mower Deck (DDSH52)
5900223	61" Quick Adjust Mower Deck (DDSH61)
5901115	61" Mower Deck (DDS61)

Briggs and Stratton Yard Power Products Group

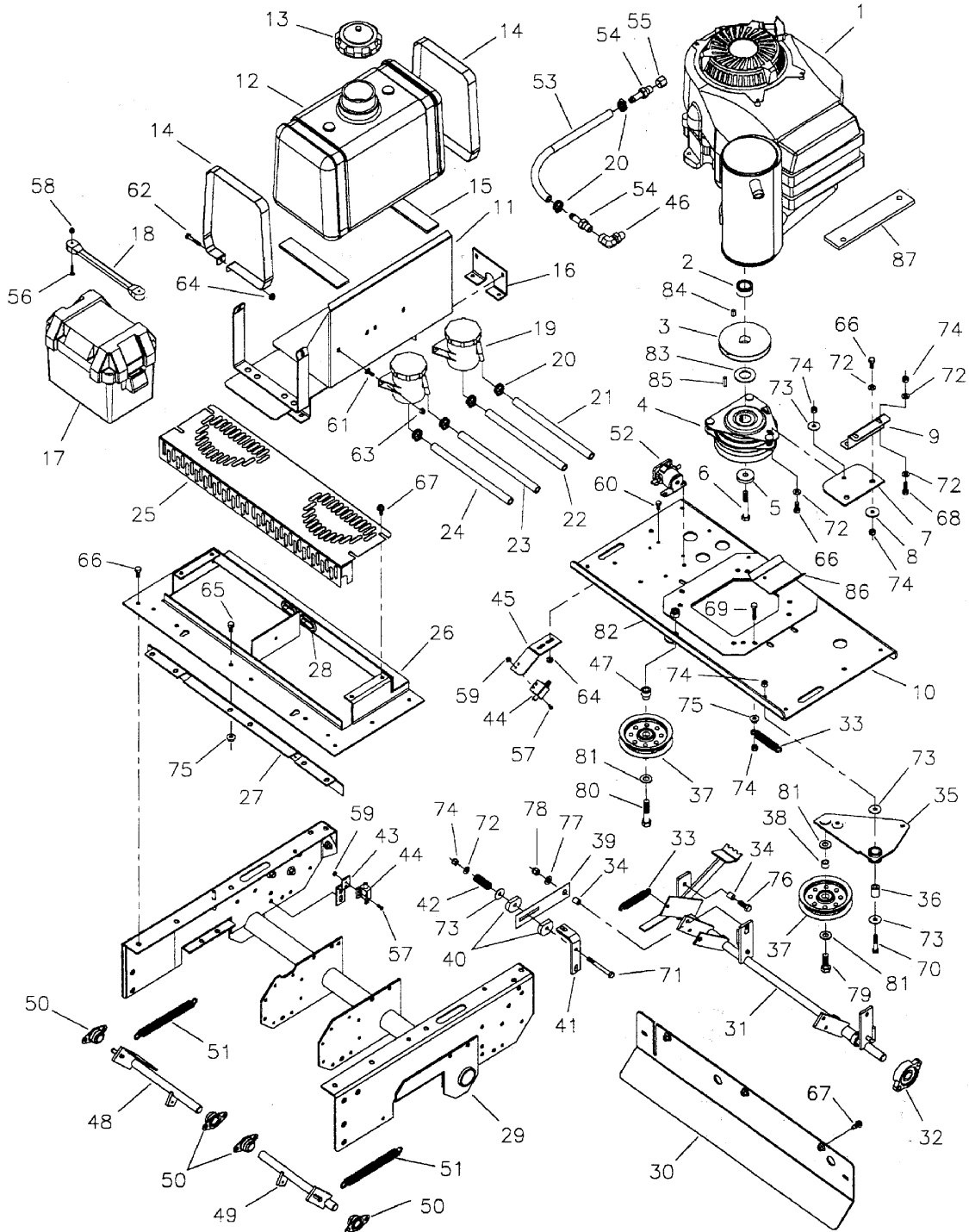
5375 North Main Street
Munnsville, NY 13409 USA
800-933-6175

5022186
Revision 05
Rev. Date: 8/2007
TP 400-7092-05-WD-F

MODEL COMPONENTS	PAGE
Engine Frame, Engine & PTO Group	4
Engine Frame, Engine & PTO Group - 23HP (S/N: 3585 & above)	10
Handle Bar Group	16
Transaxle Drive Group	20
Decal Group	24
52" Mower Deck - Complete	26
52" Quick Adjust Mower Deck - Frame, Caster & Shield	30
52" Quick Adjust Mower Deck - Housing, Covers, Spindles & Blades	32
52" Quick Adjust Mower Deck - Pulleys, Belt & Idler Arm	34
52" & 61" Quick Adjust Mower Deck - Rollers & Casters	36
61" Mower Deck - Complete	38
61" Quick Adjust Mower Deck - Frame, Caster & Shield	42
61" Quick Adjust Mower Deck - Housing, Covers, Spindles & Blades	44
61" Quick Adjust Mower Deck - Pulleys, Belt & Idler Arm	46
48" Mower Deck - Complete	48
Spindle Service Parts (S/N: 6175 & Above)	52
Electrical Group - 18HP Briggs Manual Start	54
Electrical Group - 18HP Briggs Electric Start	56
Electrical Group - 14HP Kawasaki Manual Start	58
Electrical Group - 17HP Kawasaki Electric Start	60
Electrical Group - 15HP & 17HP Kawasaki V-Twin Manual Start	62
Electrical Group - 23HP Kawasaki V-Twin Electric Start	64
Torque Specification Chart	Inside Back Cover

Engine Frame, Engine & PTO Group

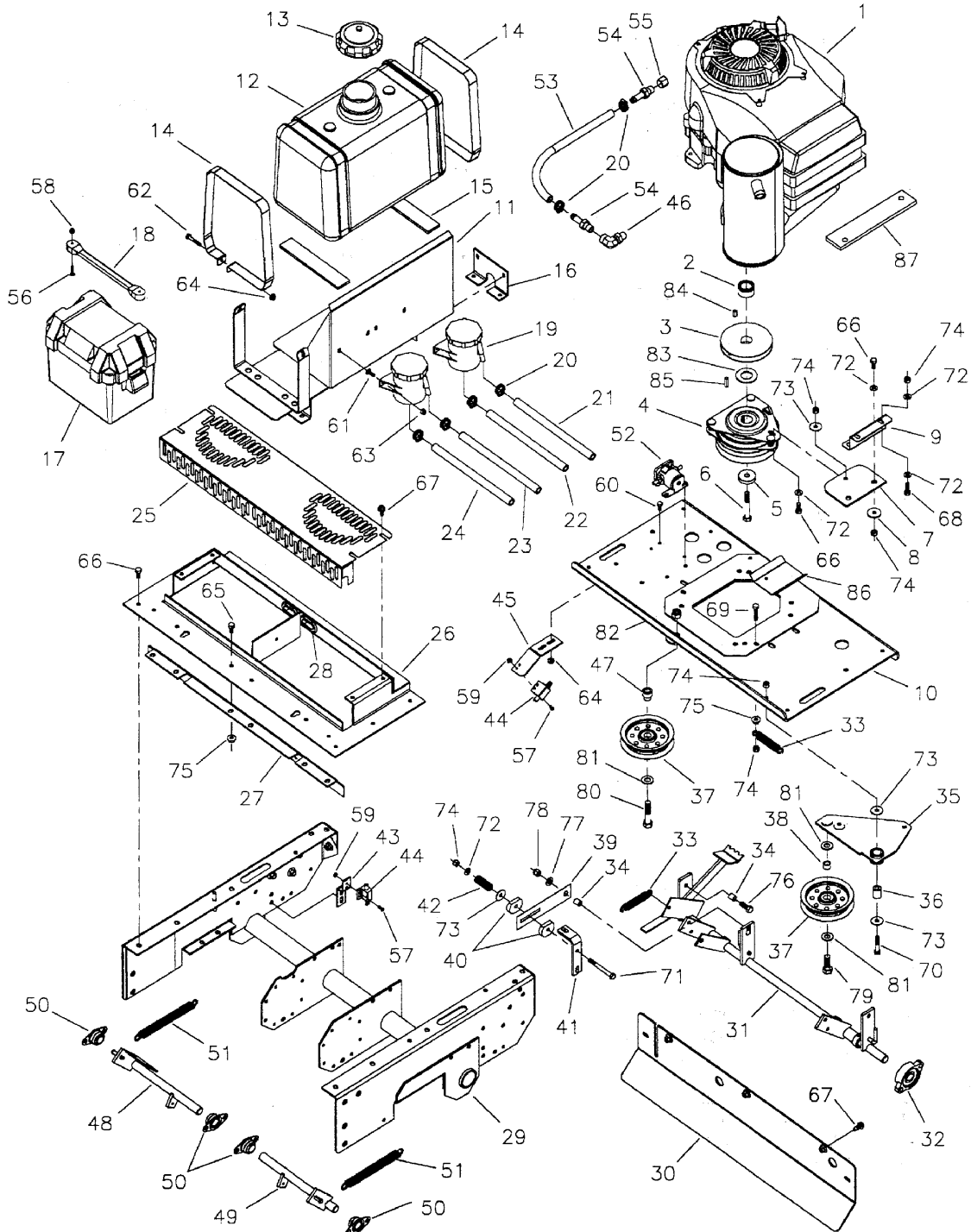
NOTE: Unless noted otherwise,
use the standard hardware torque
specification chart.



The above parts group applies to the following Mfg. Nos.:
 5900076 (DDSKAV15) 5900080 (S/N: 1123 - 3584) (DDSKAV23)
 DDSBVE
 5901024 (DDSKA)
 DDSBV
 DDSKAE
 5900078 (DDSKAV17)

Engine Frame, Engine & PTO Group

NOTE: Unless noted otherwise,
use the standard hardware torque
specification chart.



The above parts group applies to the following Mfg. Nos.:

5900076 (DDSKAV15) 5900080 (S/N: 1123 - 3584) (DDSKAV23)

DDSBVE

5901024 (DDSKA)

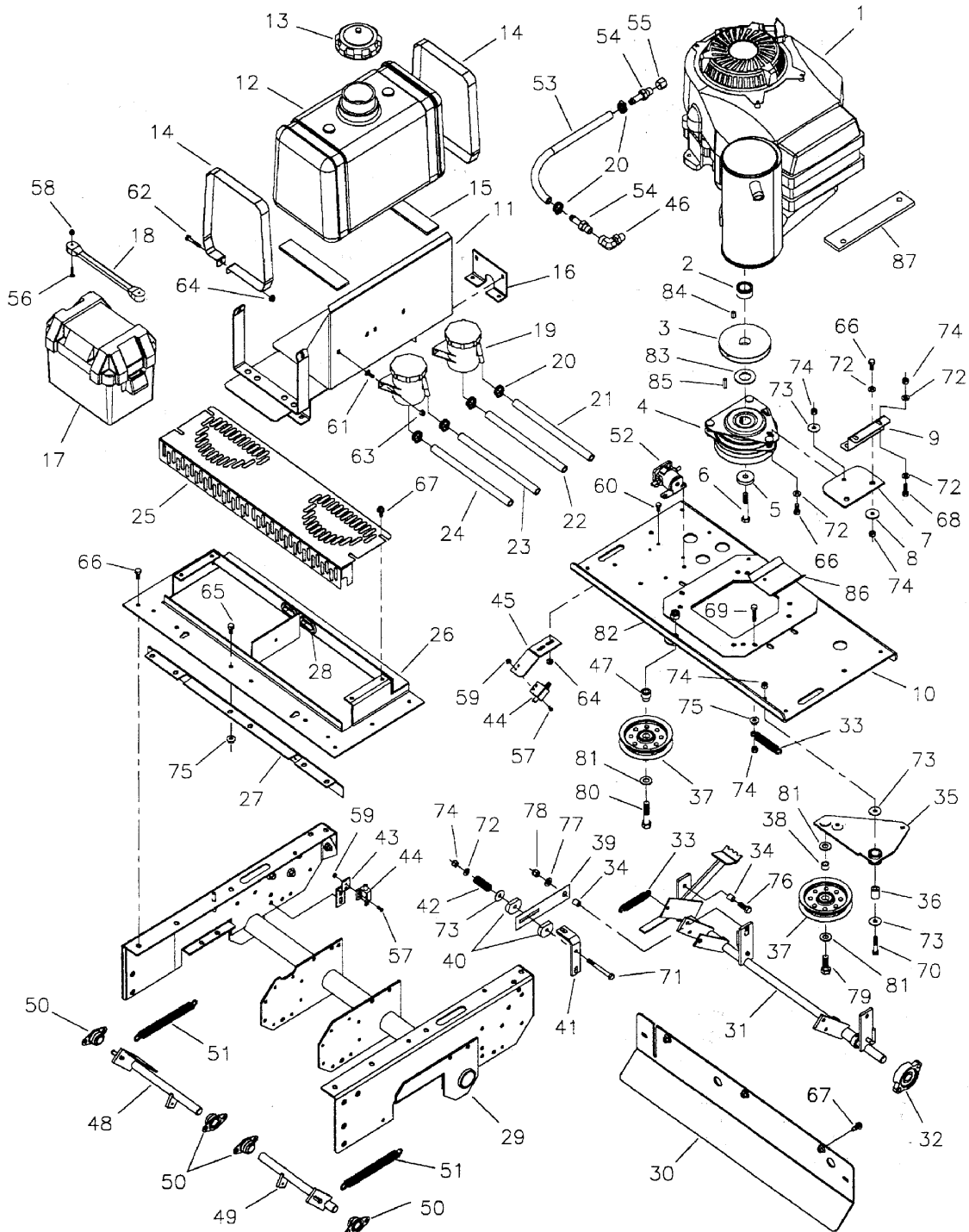
DDSBV

DDSKAE

5900078 (DDSKAV17)

Engine Frame, Engine & PTO Group

NOTE: Unless noted otherwise,
use the standard hardware torque
specification chart.



The above parts group applies to the following Mfg. Nos.:

5900076 (DDSKAV15) 5900080 (S/N: 1123 - 3584) (DDSKAV23)

DDSBVE

5901024 (DDSKA)

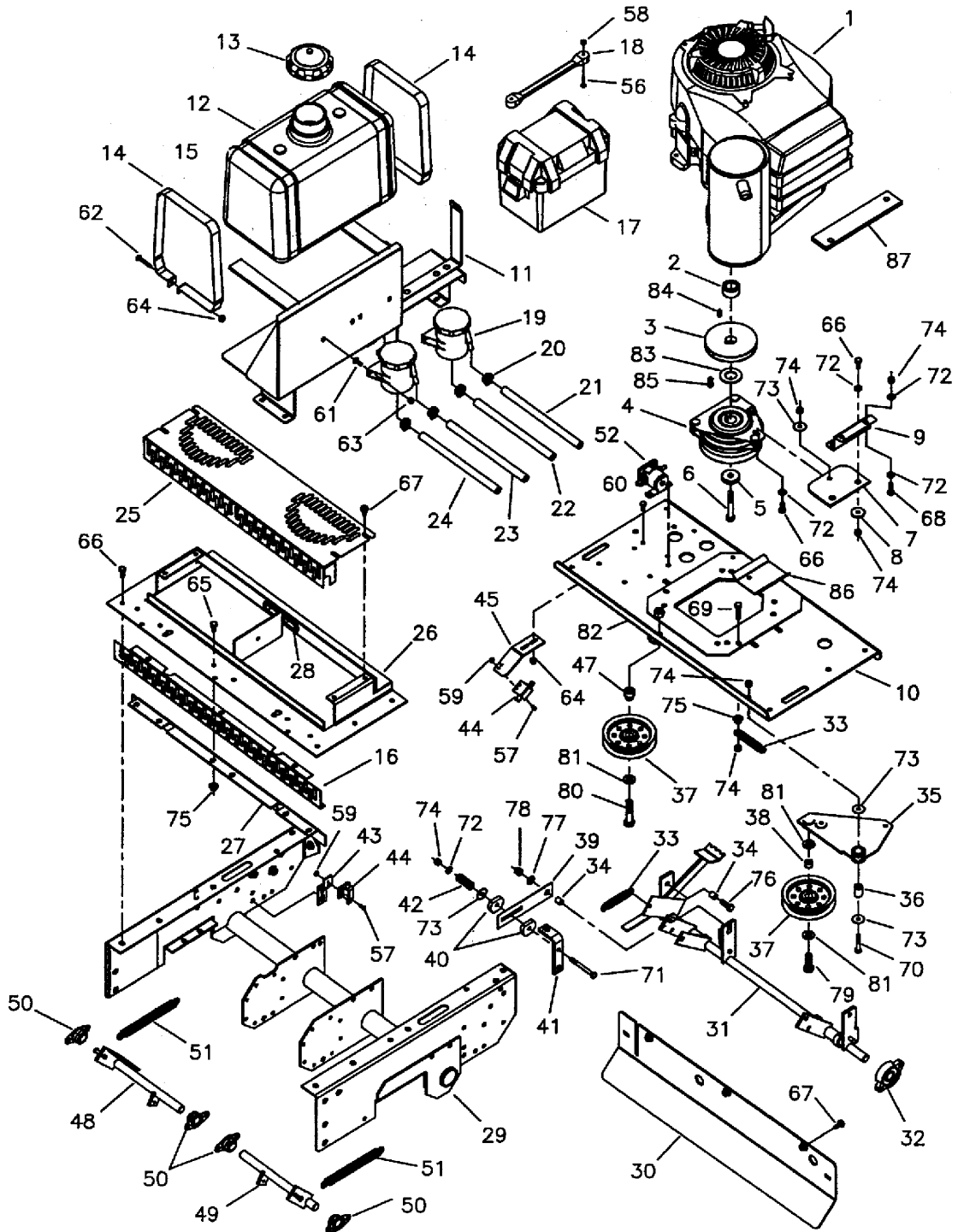
DDSBV

DDSKAE

5900078 (DDSKAV17)

Engine Frame, Engine & PTO Group - 23HP (S/N: 3585 & above)

NOTE: Unless noted otherwise,
use the standard hardware torque
specification chart.



The above parts group applies to the following Mfg. Nos.:
5900080 (S/N: 3585 & above) (DDSKAV23)

Engine Frame, Engine & PTO Group - 23HP (S/N: 3585 & above)

REF NO.	PART NO.	QTY.	DESCRIPTION
1	5022304		ENGINE, 23HP Kawasaki (Model FH680V)
-	5022300		MANIFOLD, DDSKAV23 (not shown)
-	5022304X1		MUFFLER, DDSKAV23 (not shown)
-	5045340B		BRACKET, Muffler Mount (not shown)
-	5045341B		SHIELD, Manifold Heat
2	5045321		SPACER, 1.13 x 1.75 x 1.50
3	5045376		PULLEY, DDSKAV23 Crankshaft
4	5021145		CLUTCH, Electric, 1-1/8" Shaft
5	5042132		SPACER, .45 x 1.62 x .37
6	5045289		CRANKSHAFT BOLT, 7/16 x 2-1/2
7	5043636		CLUTCH ANCHOR PAD
8	5044617		WASHER, Clutch Anchor
9	5044441B		ANCHOR, Clutch
10	5044699B		PLATE, Engine Deck
11	5046015B		MOUNT, Fuel Tank
12	5021869		FUEL TANK, 5 Gallon
-	5022151		RUBBER BUSHING
13	5022158		FUEL TANK CAP
14	5044694B		FUEL TANK STRAP
15	5021877		RUBBER PAD
16	5046021B		ENGINE DECK GUARD
17	5100688		BOX, Battery
18	5021670		RUBBER STRAP
19	5021491		RESERVOIR, Hydraulic
20	5021392		CLAMP, #6 Hose
21	5050860X37		HOSE, 37" Left Transmission Return
22	5050860X26		HOSE, 26" Left Transmission Feed
23	5050860X43		HOSE, 43" Right Transmission Return
24	5050860X35		HOSE, 35" Right Transmission Feed
25	5043445B		FAN COVER
26	5043466B		FAN SHROUD
27	5043474B		SUPPORT, Engine Deck
28	5021397		GROMMET, 1-1/4"
29	5043467B		ENGINE DECK
30	5044700B		PLATE, Engine Deck Back
31	5031035B		SHAFT, Control
32	5021499		BEARING, Flange
33	5020807		SPRING, Extension
34	5041600		SLEEVE
35	5043473B		MOUNT, Idler (Includes 5020876B bushing and 5022289 rivet.)
-	5020876B		BUSHING, Brass

Footnotes

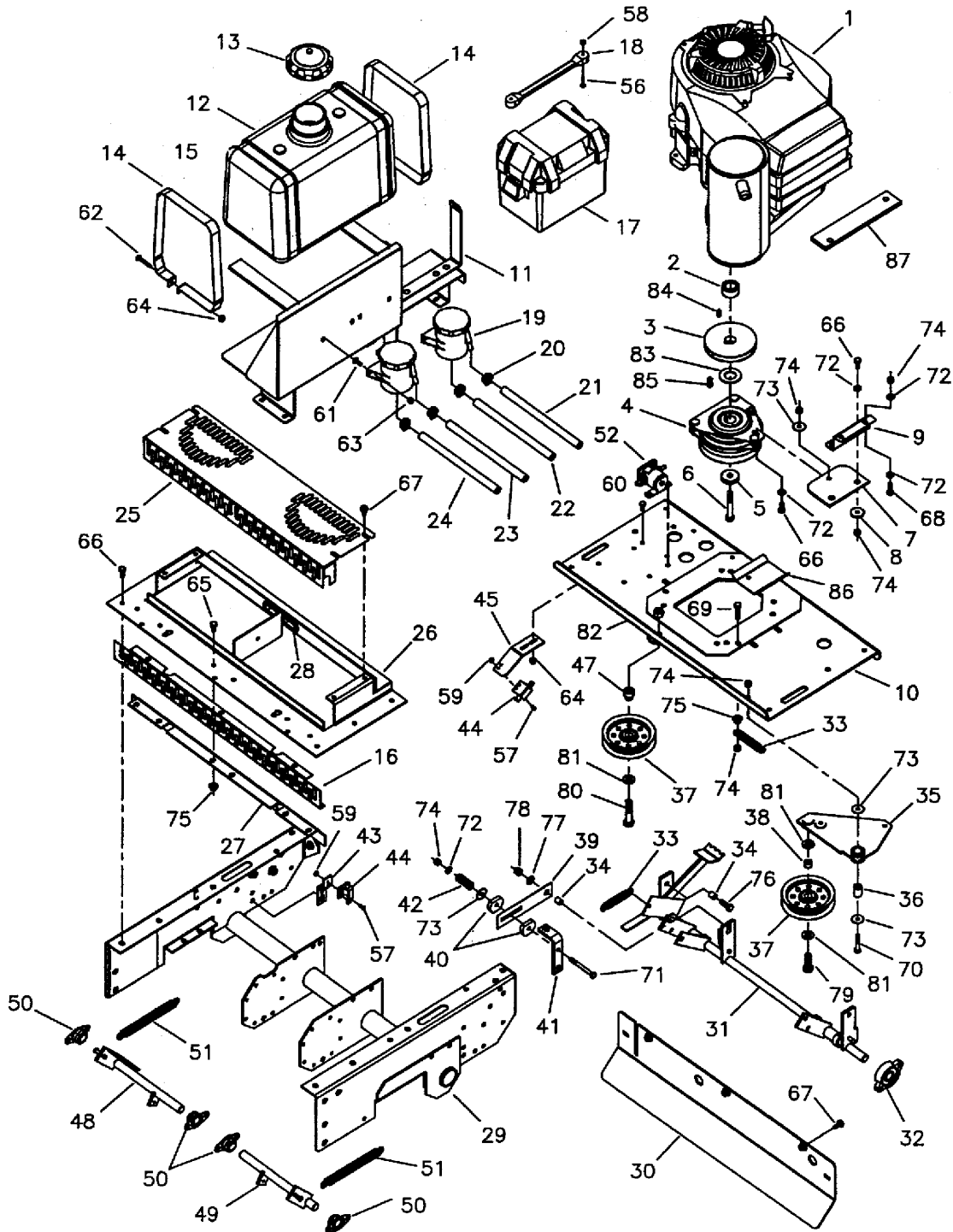
- See your local Kawasaki engine dealer for parts & service.

The above parts group applies to the following Mfg. Nos.:

5900080 (S/N: 3585 & above) (DDSKAV23)

Engine Frame, Engine & PTO Group - 23HP (S/N: 3585 & above)

NOTE: Unless noted otherwise,
use the standard hardware torque
specification chart.



The above parts group applies to the following Mfg. Nos.:
5900080 (S/N: 3585 & above) (DDSKAV23)

Engine Frame, Engine & PTO Group - 23HP (S/N: 3585 & above)

REF NO.	PART NO.	QTY.	DESCRIPTION
-	5022289		RIVET, Plastic Push-In
36	5042134		SPACER, .32 x .75 x 1.06
37	5021002		PULLEY, Backside Idler
38	5020870		INSERT, Bearing
39	5044716		PLATE, Friction
40	5044726		PUCK, Brake
41	5044702B		SUPPORT, Engine Deck
42	5021773		SPRING, Compression
43	5044710B		MOUNT, Switch
44	5022095		SWITCH, Plunger, NO/NC
45	5043470B		MOUNT, Switch
46	5021465		FITTING, 90 Degree, 3/8" NPT Swivel (not shown)
47	5021168		INSERT, Bearing Shoulder
48	5043349B		SHAFT, Brake, Right
49	5043435B		SHAFT, Brake, Left
50	5021098		BEARING, Flange
51	5021103		SPRING, Extension
52	5020801		SOLENOID, Starter
53	5050857X18		1/2" Hose, 18" Long (not shown)
54	5021372		FITTING, 3/8NPT-1/2" Hose, Straight (not shown)
55	5021466		CAP, 3/8 NPT (not shown)
56	5025270		SCREW, #10-24 x 1
57	5025179X4		SCREW, #10-24 x 1/2
58	5025271		NUT, #10-24 Hex Nylon Lock
59	5025029		NUT, #10-24 Hex
60	5025010X5		BOLT, 1/4-20 x 5/8
61	5025144X6		CARRIAGE BOLT, 1/4-20 x 3/4
62	5025010X12		BOLT, 1/4-20 X 1-1/2
63	5025095		NUT, 1/4-20 Hex Nylon Lock
64	5025126		NUT, 1/4-20 Hex Serrated Flange
65	5025011X5		BOLT, 5/16-18 x 5/8
66	5025011X6		BOLT, 5/16-18 x 3/4
67	5025059X6		BOLT, Self-Tapping, 5/16-18 x 3/4
68	5025011X8		BOLT, 5/16-18 x 1
69	5025055X12		BOLT, 5/16-18 x 1-1/2 TFL
70	5025011X14		BOLT, 5/16-18 x 1-3/4
71	5025011X24		BOLT, 5/16-18 x 3
72	5025155		WASHER, 5/16" SAE
73	5025164		WASHER, 5/16" Fender
74	5025057		NUT, 5/16-18 Hex Nylon Lock
75	5025139		NUT, 5/16-18 Hex Large Serrated Flange
76	5025013X8		BOLT, 3/8-16 x 1
77	5025156		WASHER, 3/8" SAE
78	5025097		NUT, 3/8-24 Hex Nylon Lock

Footnotes

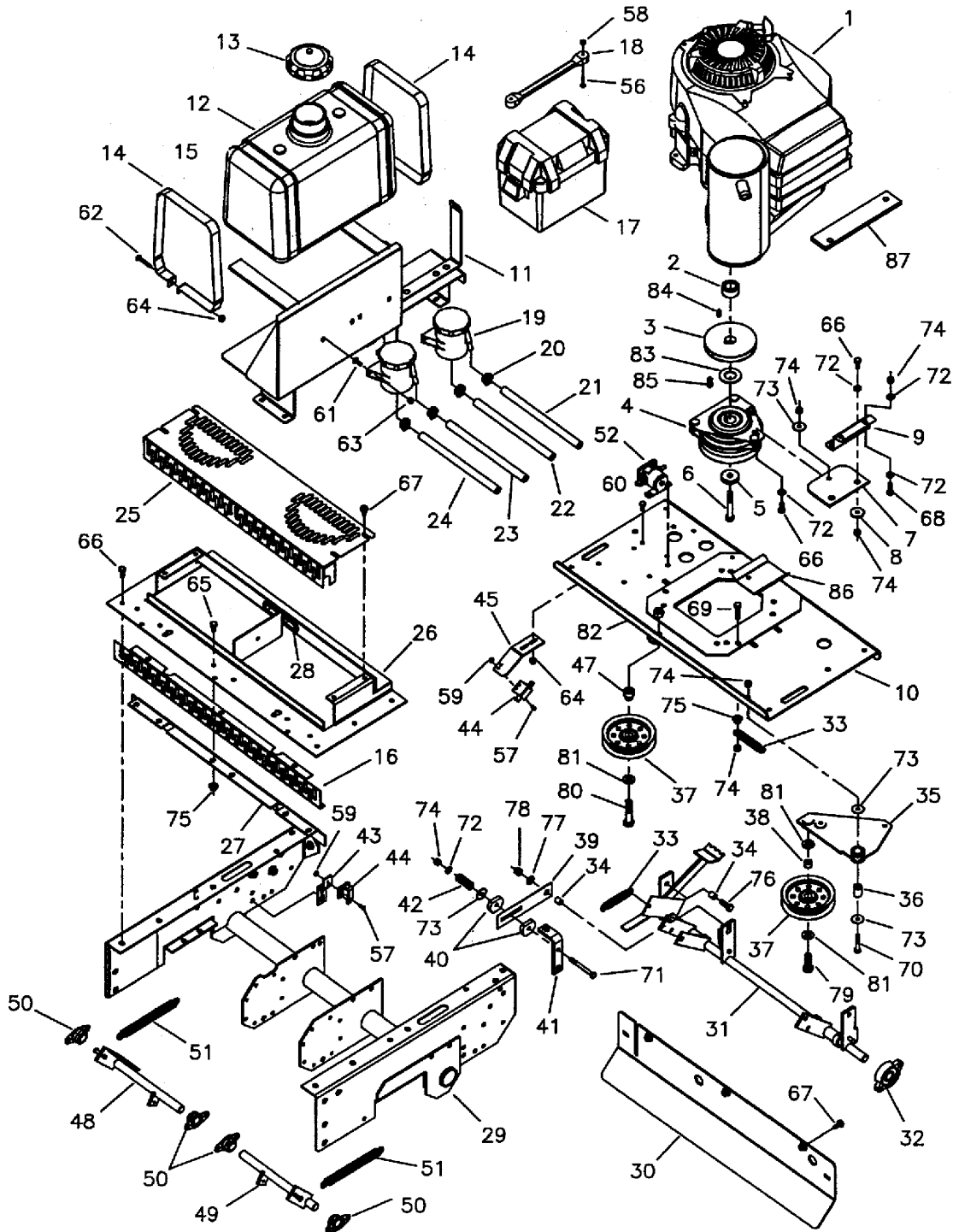
- See your local Kawasaki engine dealer for parts & service.

The above parts group applies to the following Mfg. Nos.:

5900080 (S/N: 3585 & above) (DDSKAV23)

Engine Frame, Engine & PTO Group - 23HP (S/N: 3585 & above)

NOTE: Unless noted otherwise,
use the standard hardware torque
specification chart.



The above parts group applies to the following Mfg. Nos.:
5900080 (S/N: 3585 & above) (DDSKAV23)

Engine Frame, Engine & PTO Group - 23HP (S/N: 3585 & above)

REF NO.	PART NO.	QTY.	DESCRIPTION
79	5025018X12		BOLT, 1/2-20 x 1-1/2
80	5025018X20		BOLT, 1/2-20 x 2-1/2
81	5025158		WASHER, 1/2" SAE
82	5025098		NUT, 1/2-20 Hex Nylon Lock
83	5022303		SPACER, DDSKAV23 Clutch
84	5050407X10		KEY, 1/4 SQ. X 5/8
85	5050407X1		KEY, 1/4 SQ. X 1
86	5045202B		PAN, Oil Drain
87	5045352B		SPACER, Engine Block

Footnotes

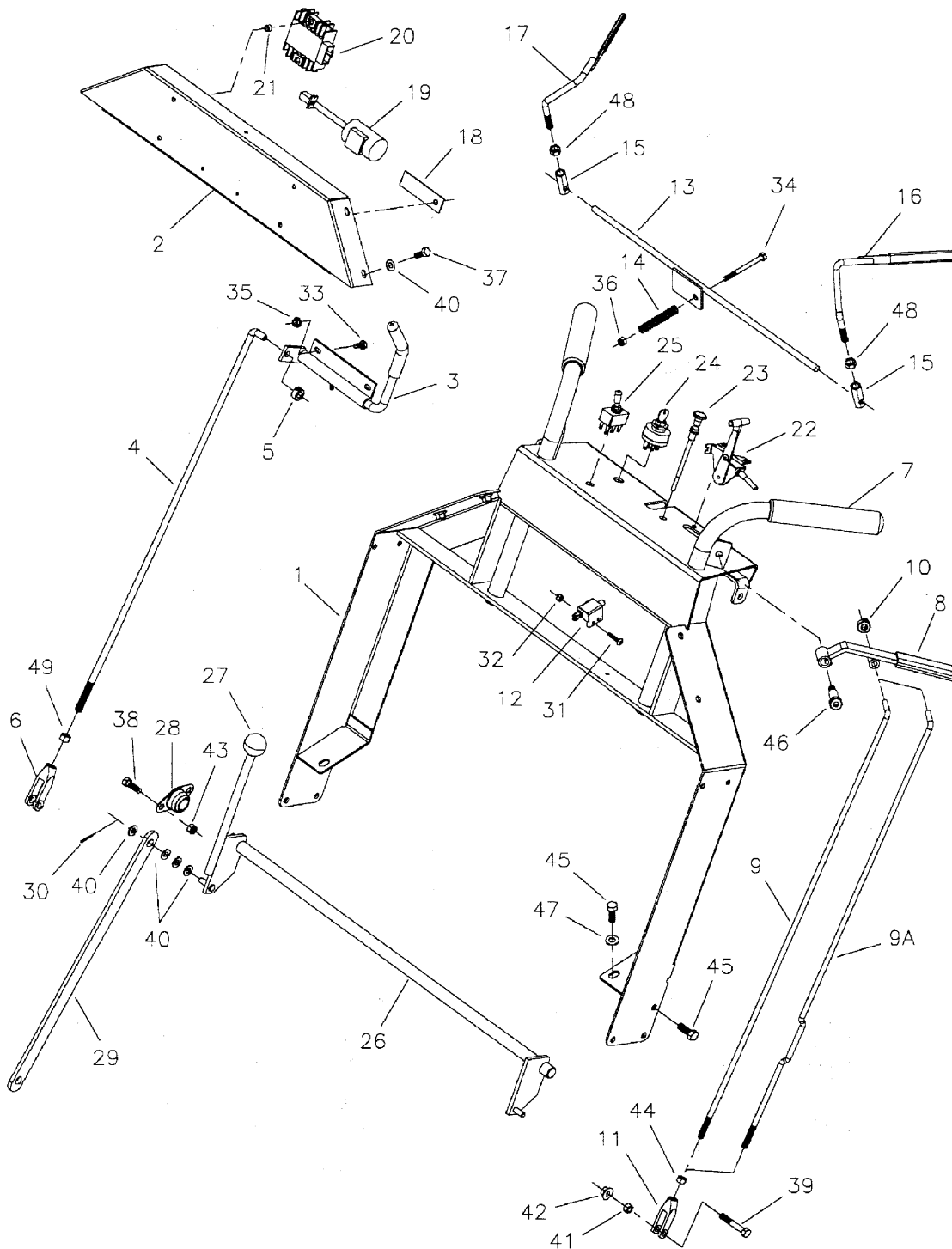
- See your local Kawasaki engine dealer for parts & service.

The above parts group applies to the following Mfg. Nos.:

5900080 (S/N: 3585 & above) (DDSKAV23)

Handle Bar Group

NOTE: Unless noted otherwise,
use the standard hardware torque
specification chart.



The above parts group applies to the following Mfg. Nos.:

5901024 (DDSKA)	5900080 (S/N: 3585 & above) (DDSKAV23)
DDSBVE	5900076 (DDSKAV15)
DDSKAE	
5900078 (DDSKAV17)	
DDSBV	
5900080 (S/N: 1123 - 3584) (DDSKAV23)	

Handle Bar Group

REF NO.	PART NO.	QTY.	DESCRIPTION
1	5031013B		DDS HANDLE BAR WELDMENT (S/N: 2887 & below)
1	5045430B		DDS HANDLE BAR WELDMENT (S/N: 2888 & above)
2	5043516B		COVER, Handle Bar
3	5044715B		LEVER, Control
3	5021880		GRIP, Foam
4	5044717		ROD, Forward Control
5	5010546		COLLAR, 3/8" Set
6	5021171		CLEVIS, 3/8-24, Plastic
7	5020837		GRIP, Foam
8	5043184B		LEVER, Reverse w/ Grip
8	5025510		FOAM GRIP
9	5043461		ROD, Reverse Control
9A	5045353		ROD, DDSKAV23 Reverse-Left
10	5020047		COLLAR, 5/16" Set
11	5020979		CLEVIS, 5/16-24, Plastic
12	5021769		SWITCH, Plunger, NC
13	5043424		SWITCH ROD
14	5020637		SPRING, Compression
15	5043417		HEX ADJUSTER
16	5049038		OPERATOR PRESENCE HANDLE, LH
16	5021490		GRIP, Vinyl
17	5049039		OPERATOR PRESENCE HANDLE, RH
18	5044674B		Condenser Hold Down (14HP Kawasaki only)
19	-		CONDENSER, Kawasaki #21013-2064 (14HP Only)
20	-		REGULATOR, Kawasaki #21066-2071 (14HP)
20	-		REGULATOR, Kawasaki #21066-2070 (17HP Single)
21	5021878		BUSHING
22	5021151		CABLE, Throttle, 31" (Kawasaki)
22	5021662		CABLE, Throttle, 54" (Briggs)
23	5020810		CABLE, Choke Control, 43" (Briggs)
23	5021675		CABLE, Choke Control, 45" (Kawasaki 23HP)
24	5020927		SWITCH, Ignition, Complete
24	5021842		SWITCH, Ignition, Complete (Manual Start)
25	5021545		SWITCH, Electric Clutch (S/N: 2887 & below)
25	5022180		SWITCH, PTO (S/N: 2888 & above)
26	5043084B		SHAFT, Brake Handle
27	5021733		KNOB
28	5021098		BEARING, Flange
29	5043452B		Brake Push Rod
30	5025201X6		COTTER PIN, 3/32" x 3/4"
31	5025270		SCREW, #10-24 x 1

Footnotes

- See your local Kawasaki engine dealer for parts & service.

The above parts group applies to the following Mfg. Nos.:

5901024 (DDSKA) 5900080 (S/N: 3585 & above) (DDSKAV23)
 DDSBVE 5900076 (DDSKAV15)
 DDSKAE
 5900078 (DDSKAV17)
 DDSBV
 5900080 (S/N: 1123 - 3584) (DDSKAV23)

Handle Bar Group

REF NO.	PART NO.	QTY.	DESCRIPTION
32	5025271		NUT, #10-24 Hex Nylon Lock
33	5025010X5		BOLT, 1/4-20 x 5/8
34	5025010X24		BOLT, 1/4-20 x 3
35	5025126		NUT, 1/4-20 Hex Serrated Flange
36	5025095		NUT, 1/4-20 Hex Nylon Lock
37	5025011X6		BOLT, 5/16-18 x 3/4
38	5025011X8		BOLT, 5/16-18 x 1
39	5025011X16		BOLT, 5/16-18 X 2
40	5025155		WASHER, 5/16" SAE
41	5025032		NUT, 5/16-18 Hex
42	5025139		NUT, 5/16-18 Hex Large Serrated Flange
43	5025057		NUT, 5/16-18 Hex Nylon Lock
44	5025033		NUT, 5/16-24 Hex
45	5025013X8		BOLT, 3/8-16 x 1
46	5025220		SHOULDER BOLT, 1/2 x 1-1/2
47	5025156		WASHER, 3/8" SAE
48	5025034		NUT, 3/8-16 Hex
49	5025035		NUT, 3/8-24 Hex

Footnotes

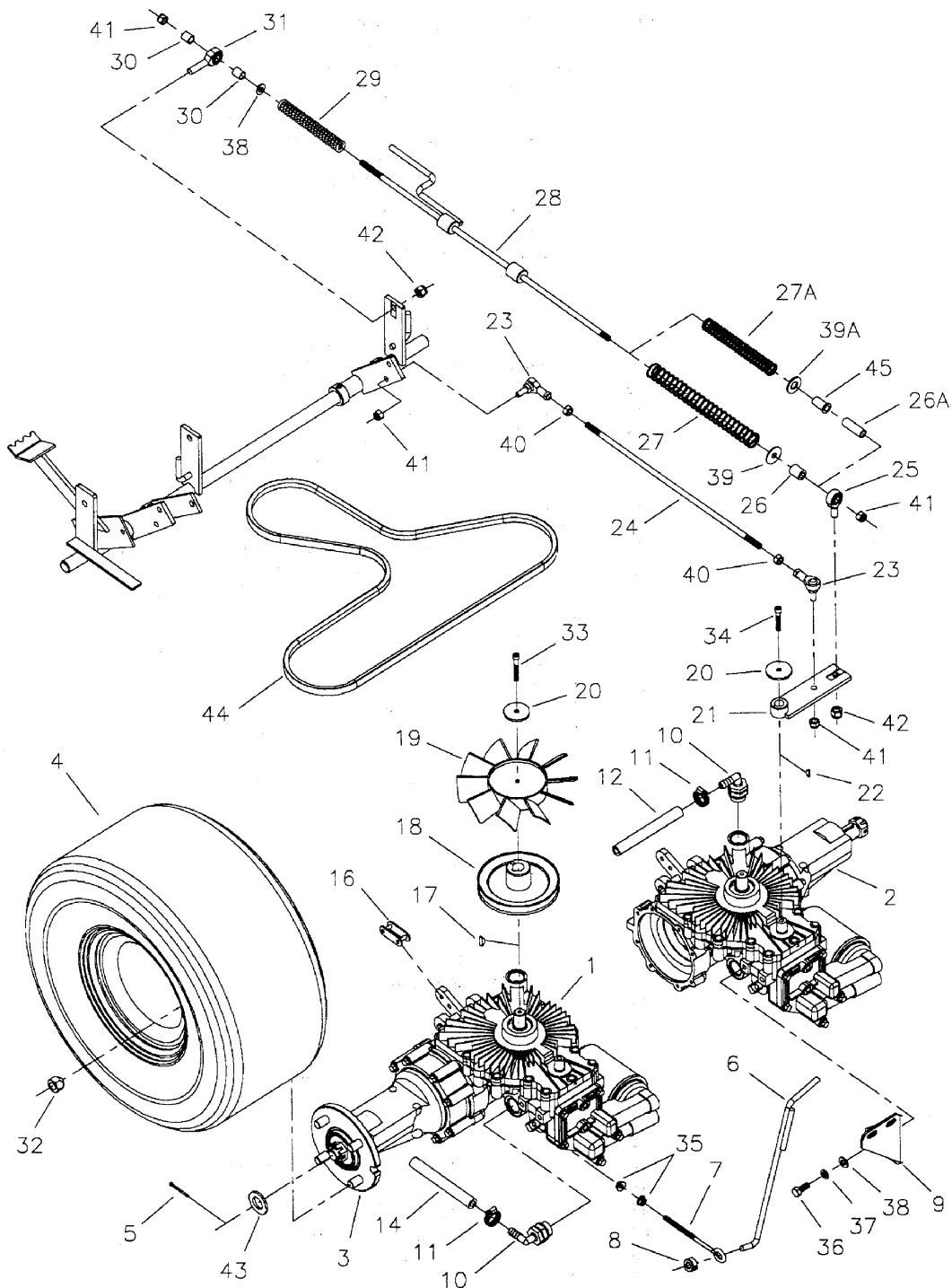
- See your local Kawasaki engine dealer for parts & service.

The above parts group applies to the following Mfg. Nos.:

5901024 (DDSKA) 5900080 (S/N: 3585 & above) (DDSKAV23)
DDSBVE 5900076 (DDSKAV15)
DDSKAE
5900078 (DDSKAV17)
DDSBV
5900080 (S/N: 1123 - 3584) (DDSKAV23)

Transaxle Drive Group

NOTE: Unless noted otherwise, use the standard hardware torque specification chart.

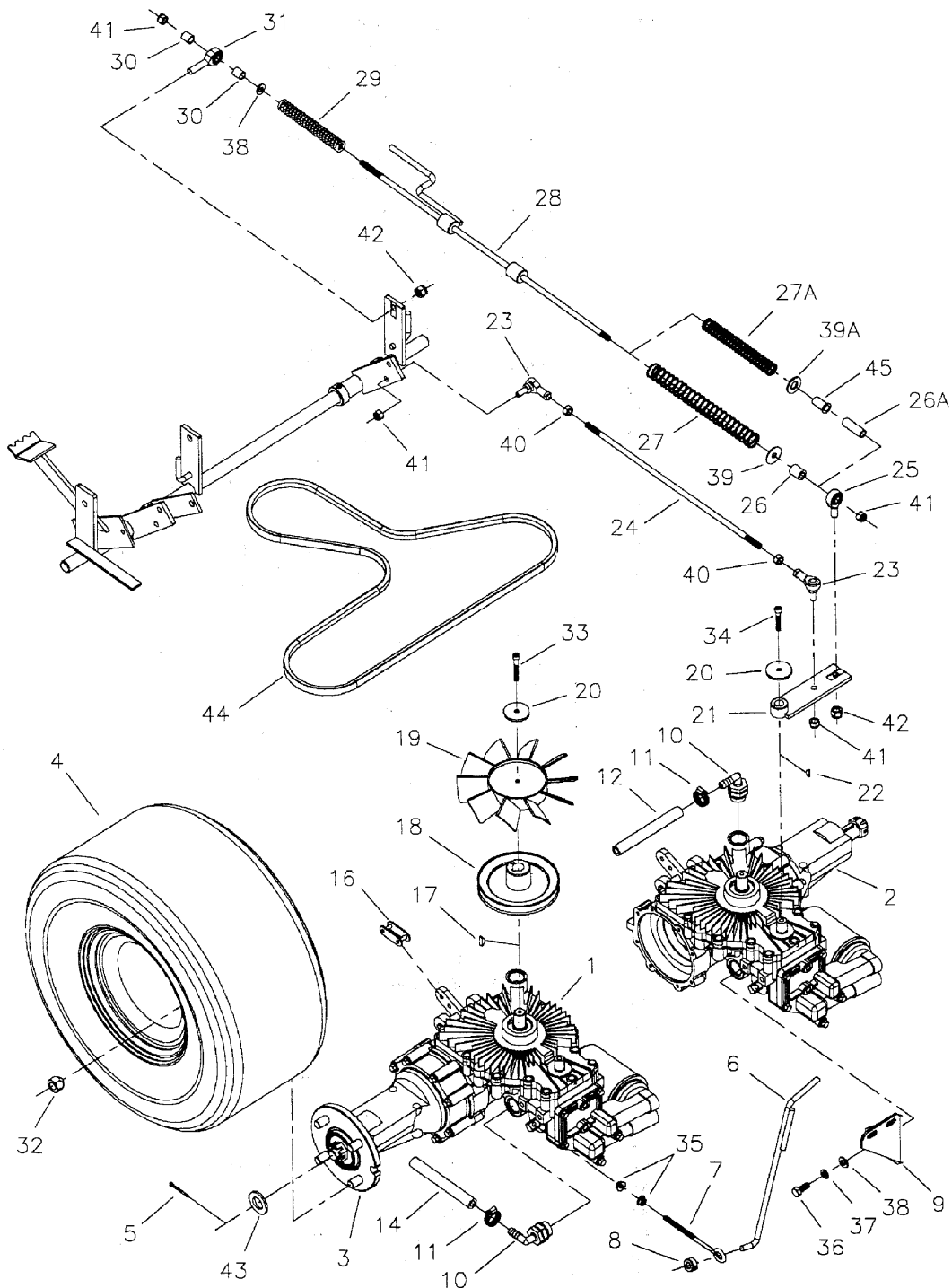


The above parts group applies to the following Mfg. Nos.:

- | | |
|--|--------------------|
| DDSKAE | DDSBVE |
| 5900080 (S/N: 1123 - 3584) (DDSKAV23) | 5900076 (DDSKAV15) |
| 5901024 (DDSKA) | |
| DDSBV | |
| 5900080 (S/N: 3585 & above) (DDSKAV23) | |
| 5900078 (DDSKAV17) | |

Transaxle Drive Group

NOTE: Unless noted otherwise, use the standard hardware torque specification chart.

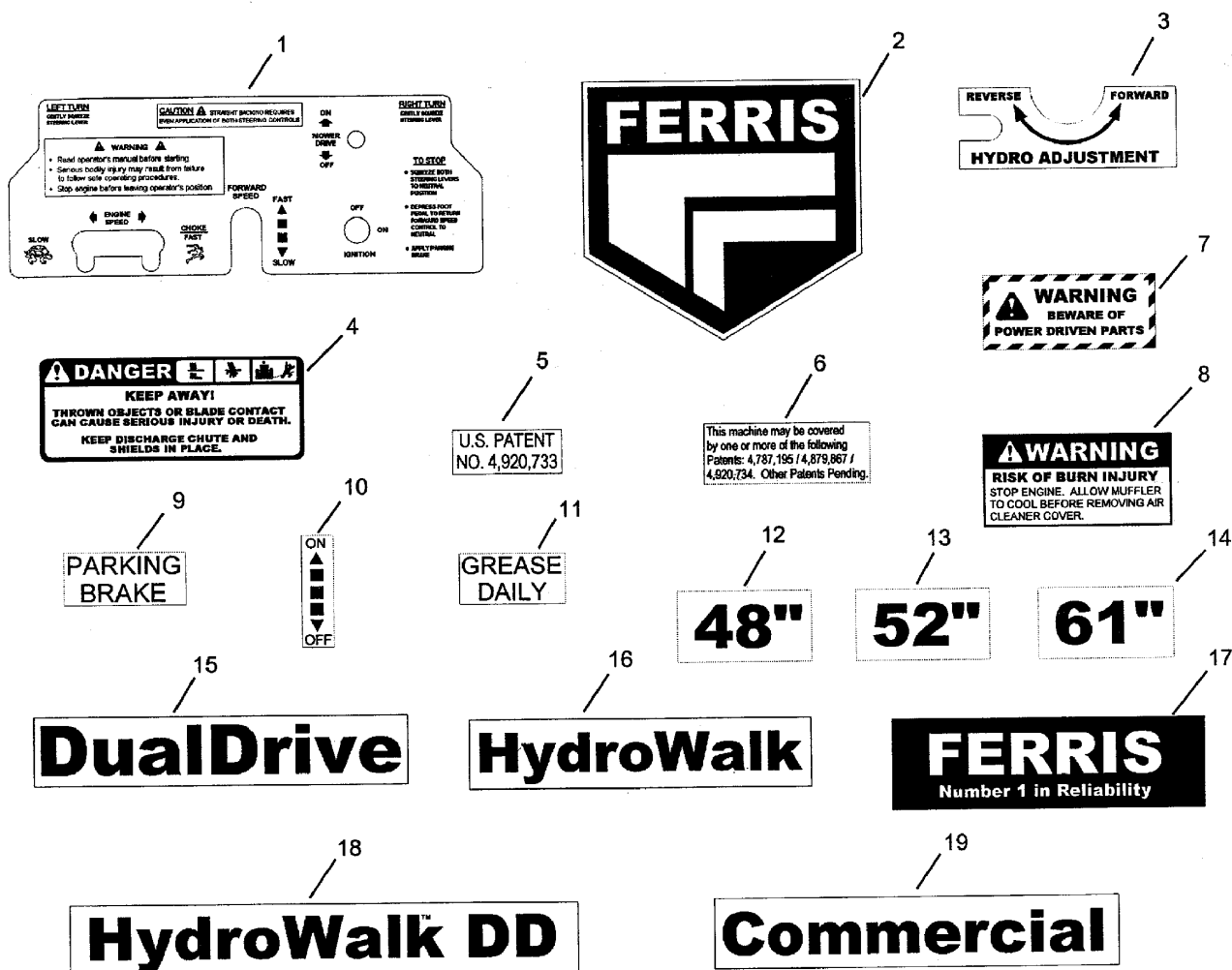


The above parts group applies to the following Mfg. Nos.:

- | | |
|--|--------------------|
| DDSKAE | DDSBVE |
| 5900080 (S/N: 1123 - 3584) (DDSKAV23) | 5900076 (DDSKAV15) |
| 5901024 (DDSKA) | |
| DDSBV | |
| 5900080 (S/N: 3585 & above) (DDSKAV23) | |
| 5900078 (DDSKAV17) | |

Decal Group

NOTE: Unless noted otherwise, use the standard hardware torque specification chart.



The above parts group applies to the following Mfg. Nos.:

5900080 (S/N: 3585 & above) (DDSKAV23)	5900078 (DDSKAV17)
DDSBV	DDSKAE
5901024 (DDSKA)	
5900076 (DDSKAV15)	
DDSBVE	
5900080 (S/N: 1123 - 3584) (DDSKAV23)	

Decal Group

REF NO.	PART NO.	QTY.	DESCRIPTION
1	5021874		DECAL, Operation
2	5020852		DECAL, Ferris Logo, 10-3/4"
3	5021498		DECAL, Hydro Adjustment
4	5020851		DECAL, Danger
5	5022146		DECAL, U.S. Patent
6	5021421		DECAL, Patent
7	5020337		DECAL, Warning
8	5022189		DECAL, Warning-Burn
9	5021246		DECAL, Parking Brake
10	5021154		DECAL, PTO Switch
11	5021036		DECAL, Grease Daily
12	5021266		DECAL, 48"
13	5021299		DECAL, 52"
14	5021302		DECAL, 61"
15	5021422		DECAL, Dual Drive
16	5021244		DECAL, HydroWalk, Word
17	5020849		DECAL, Ferris Word Logo
18	5022296		DECAL, HydroWalk DD
19	5020846		DECAL, Commercial

Footnotes

The above parts group applies to the following Mfg. Nos.:

5900080 (S/N: 3585 & above) (DDSKAV23) 5900078 (DDSKAV17)

DDSBV DDSKAE

5901024 (DDSKA)

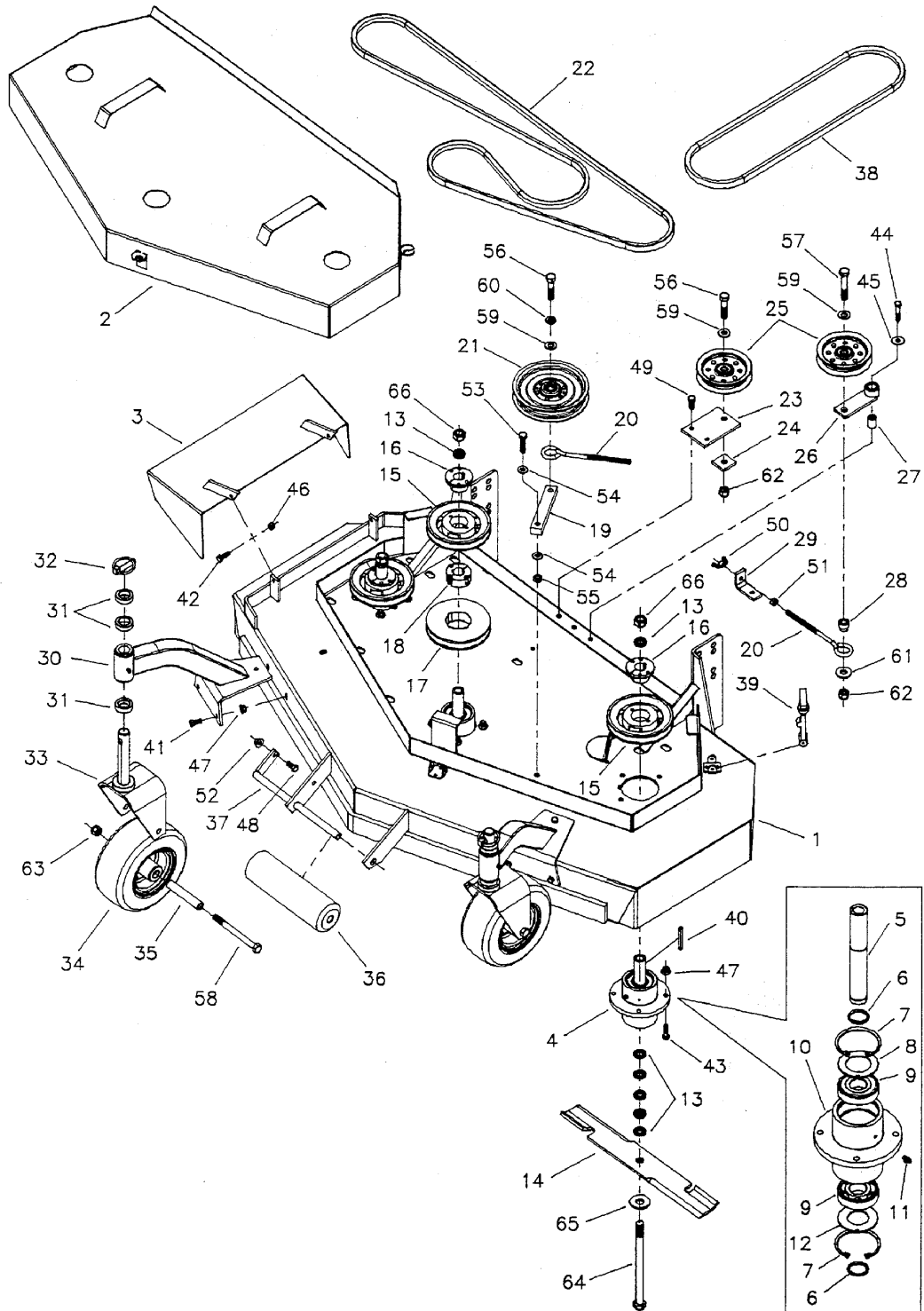
5900076 (DDSKAV15)

DDSBVE

5900080 (S/N: 1123 - 3584) (DDSKAV23)

52" Mower Deck - Complete

NOTE: Unless noted otherwise, use the standard hardware torque specification chart.



The above parts group applies to the following Mfg. Nos.:
5900218 (DDS52)

52" Mower Deck - Complete

REF NO.	PART NO.	QTY.	DESCRIPTION
1	6630664		52" MOWER HOUSING ASSEMBLY (Includes safety decals)
2	5030671B		52" DECK GUARD
3	5041668B		DISCHARGE CHUTE
4	5030301		SPINDLE ASSEMBLY, Complete
5	5041480		SPINDLE SHAFT
6	5020864		SNAP RING, External
7	5020866		SNAP RING, Internal
8	5041653		SPINDLE WASHER, Top
9	5020828		BEARING
10	5030293		SPINDLE HOUSING
11	5020095		GREASE FITTING
12	5041672		SPINDLE WASHER, Bottom
13	5041477		SPACER, .63 x 1.06 x .23
14	5021227		MOWER BLADE, 18"
15	5020814		PULLEY, Spindle
16	5020819		BUSHING, Tapered Hub
17	5022159		PULLEY, Taper Lock
18	5022160		BUSHING, Taper Lock
19	5044610B		ARM, Idler
20	5021811		EYEBOLT, 3/8" x 8"
21	5021096		PULLEY, Backside Idler
22	5021297		BELT, Blade Spindle
23	5043106B		BRACKET, Idler Pulley
24	5043105B		SPACER, Idler Pulley
25	5044098		PULLEY, Idler
26	5044685B		ARM, Idler
27	5042134		SPACER, .32 x .75 x 1.06
28	5021168		INSERT, Bearing Shoulder
29	5042142B		SPRING ANCHOR
30	5043887		CASTER MOUNT, Complete
30	5021541		BUSHING, Flange
30	5021728		GREASE FITTING
31	5041476		SPACER, 1.02 x 1.56 x .50
32	5020655		PIN, Lynch
33	5041702B		YOKE, Caster
34	5021181		WHEEL & TIRE ASSEMBLY, White, 9 x 3.5 x 4, Complete
35	5041657		AXLE, Caster Wheel
36	5020785		ROLLER
37	5041655B		PIN, Roller Mount
38	5021420		BELT, Deck Drive
39	5020841X1		RUBBER LATCH

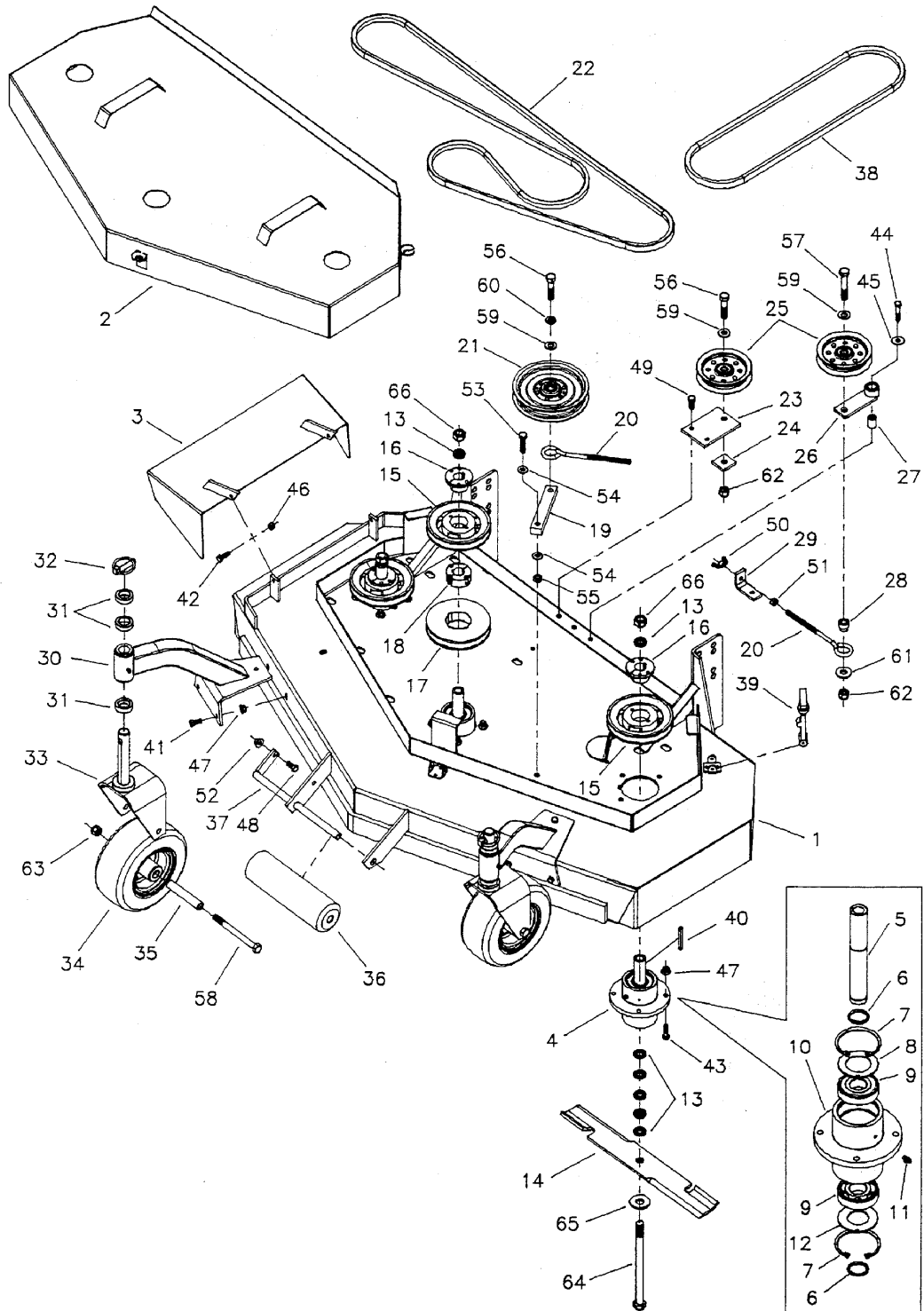
Footnotes

The above parts group applies to the following Mfg. Nos.:

5900218 (DDS52)

52" Mower Deck - Complete

NOTE: Unless noted otherwise, use the standard hardware torque specification chart.



The above parts group applies to the following Mfg. Nos.:
5900218 (DDS52)

52" Mower Deck - Complete

REF NO.	PART NO.	QTY.	DESCRIPTION
40	5050407X9		KEY, 1/4 SQ. X 2-1/2
41	5025011X6		BOLT, 5/16-18 x 3/4
42	5025011X8		BOLT, 5/16-18 x 1
43	5025011X10		BOLT, 5/16-18 x 1-1/4
44	5025011X14		BOLT, 5/16-18 x 1-3/4
45	5025164		WASHER, 5/16" Fender
46	5025057		NUT, 5/16-18 Hex Nylon Lock
47	5025139		NUT, 5/16-18 Hex Large Serrated Flange
48	5025013X6		BOLT, 3/8-16 x 3/4
49	5025013X8		BOLT, 3/8-16 x 1
50	5025143		NUT, 3/8-16 Wing Nylon Lock
51	5025034		NUT, 3/8-16 Hex
52	5025128		NUT, 3/8-16 Hex Serrated Flange
53	5025016X14		BOLT, 7/16-20 X 1-3/4
54	5025157		WASHER, 7/16" SAE
55	5025094		NUT, 7/16-20 Hex Nylon Lock
56	5025018X18		BOLT, 1/2-20 x 2-1/4
57	5025018X24		BOLT, 1/2-20 x 3
58	5025017X44		BOLT, 1/2-13 x 5-1/2
59	5025158		WASHER, 1/2" SAE
60	5025150		WASHER, 1/2" USS
61	5025056		NUT, 1/2-13 Hex Nylon Lock
62	5025098		NUT, 1/2-20 Hex Nylon Lock
63	5025056		NUT, 1/2-13 Hex Nylon Lock
64	5025019X76		BOLT, 5/8-11 x 9-1/2
65	5025159		WASHER, 5/8" USS
66	5025040		NUT, 5/8-11 Hex

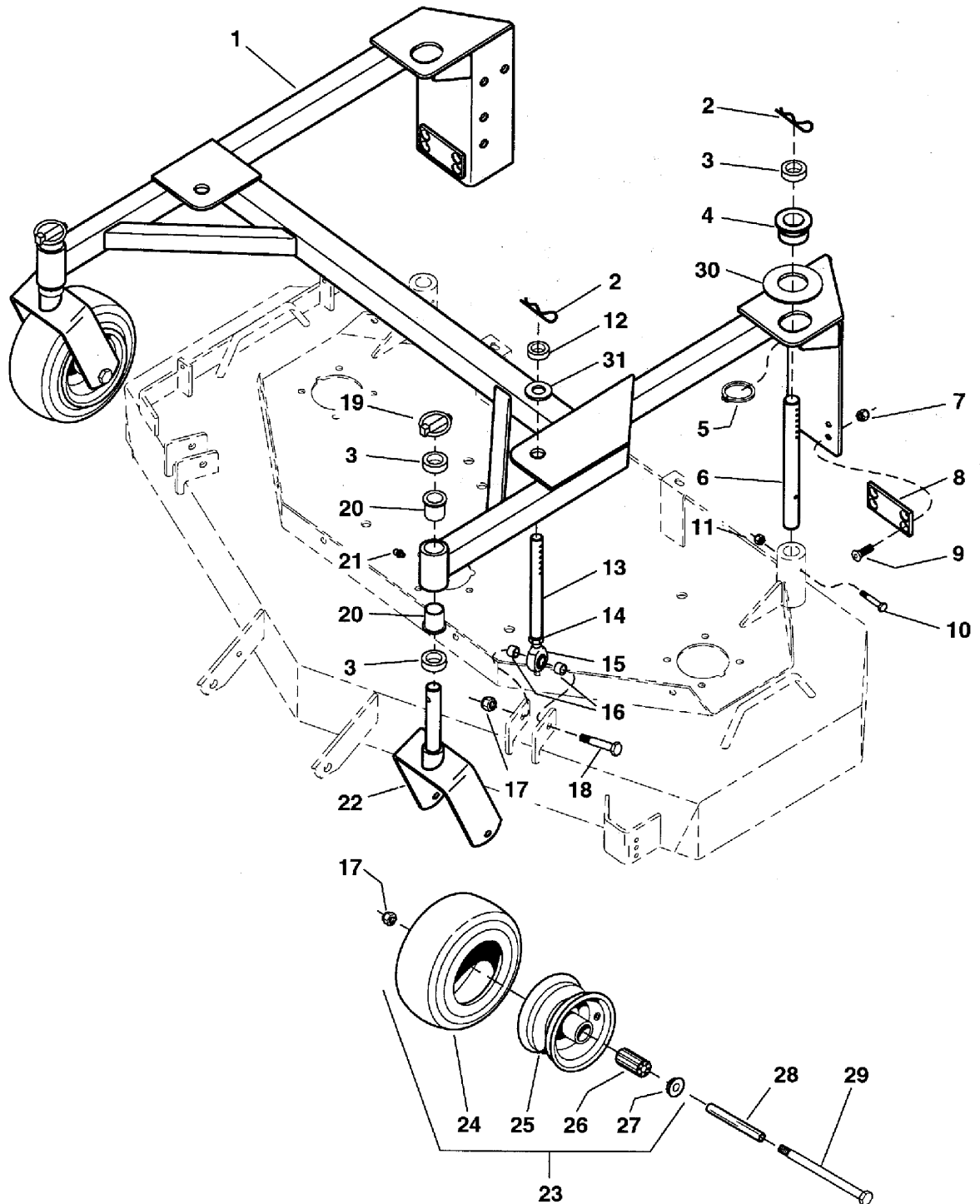
Footnotes

The above parts group applies to the following Mfg. Nos.:

5900218 (DDS52)

52" Quick Adjust Mower Deck - Frame, Caster & Shield

NOTE: Unless noted otherwise,
use the standard hardware torque
specification chart.



The above parts group applies to the following Mfg. Nos.:
5900222 (DDSH52)

52" Quick Adjust Mower Deck - Frame, Caster & Shield

REF NO.	PART NO.	QTY.	DESCRIPTION
1	5045955B	1	52" MOUNT FRAME
2	5025302	4	HAIRPIN CLIP
3	5041476	6	SPACER, 1.02 x 1.56 x .50
4	5045979	2	DECK HEIGHT BUSHING
5	5022455	2	SNAP RING, External
6	5045980	2	ADJUSTMENT ROD, Rear
7	5025045	8	NUT, 5/16-24, Hex Nylon Lock
8	5100780	2	FRICTION PLATE
9	5025303	8	SCREW, Flat Head, Socket, 5/16-18 x 1
10	5025010X18	2	BOLT, 1/4-20 x 2-1/4
11	5025095	2	NUT, 1/4-20 Hex Nylon Lock
12	5046011	2	SPACER, .76 x 1.25 x .50
13	5045981	2	ADJUSTMENT ROD, Front
14	-	2	NUT, 1/2-20 Hex
15	5022434	2	BALL JOINT, 1/2-20 Male
16	5020870	4	INSERT, Bearing
17	5025056	4	NUT, 1/2-13 Hex Nylon Lock
18	5025017X24	2	BOLT, 1/2-13 x 3
19	5020655	2	PIN, Lynch
20	5021541	4	BUSHING, Flange
21	5020095	2	GREASE FITTING
22	5045993B	2	CASTER YOKE
23	5022433S	2	WHEEL & TIRE ASSEMBLY, 11 x 4.0 x 5, Complete (Includes Ref No. 24 - 27)
24	5022433X1	2	TIRE, Front 11 x 4.0 x 5
25	5022433SX2	2	WHEEL ASSEMBLY, for 11 x 4.0 x 5 Tires, Complete (Includes Ref No. 26 & 27)
26	5022579	4	BEARING, Roller (2 per tire)
27	5021043	4	RETAINER, Bearing (2 per tire)
28	5045996	2	AXLE, Front Caster
29	5025017X52	2	BOLT, 1/2-13 x 6-1/2
30	5025304	2	WASHER, 1-1/2" SAE
31	5025160	2	WASHER, 3/4" SAE

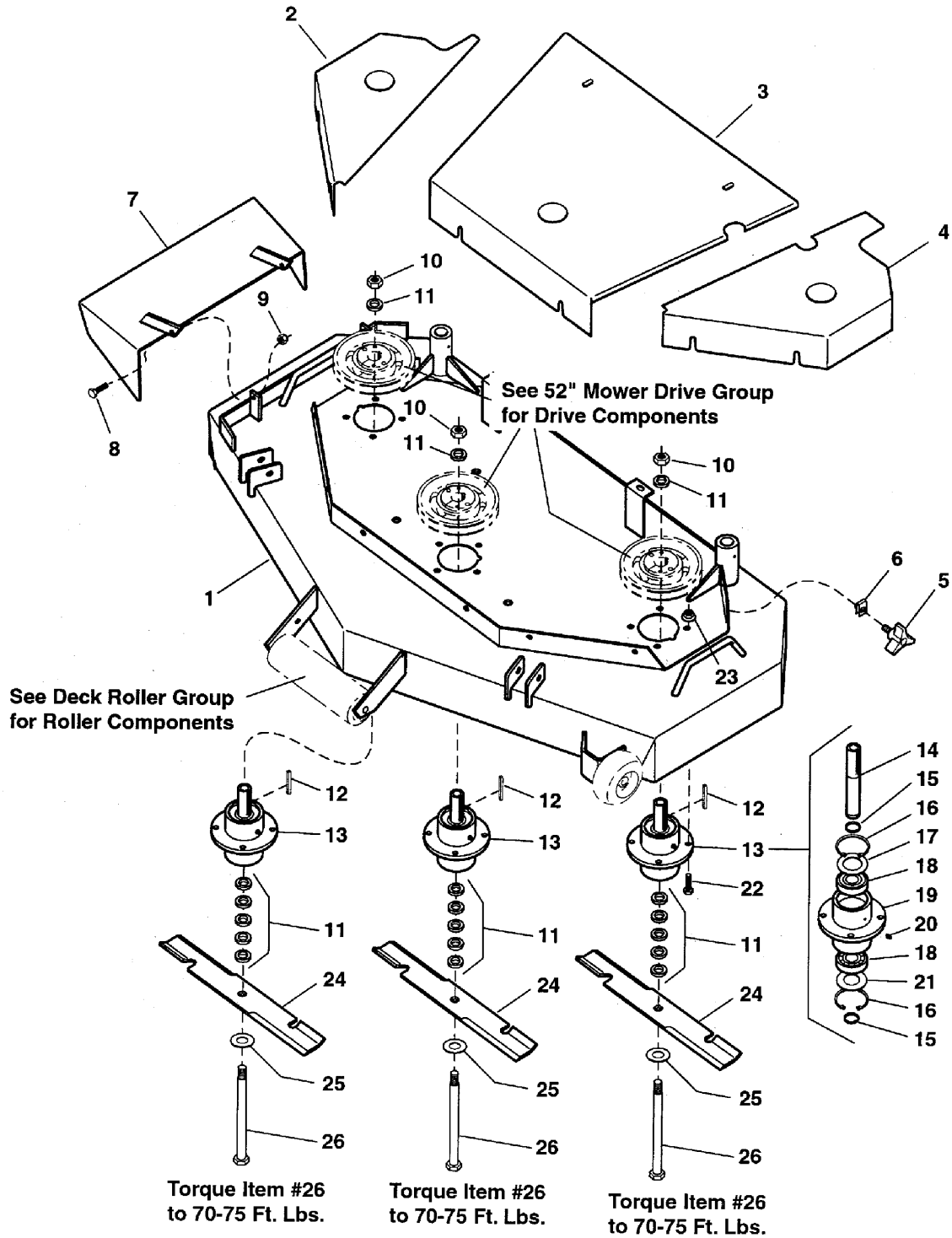
Footnotes

The above parts group applies to the following Mfg. Nos.:

5900222 (DDSH52)

52" Quick Adjust Mower Deck - Housing, Covers, Spindles & Blades

NOTE: Unless noted otherwise, use the standard hardware torque specification chart.



The above parts group applies to the following Mfg. Nos.:
5900222 (DDSH52)

52" Quick Adjust Mower Deck - Housing, Covers, Spindles & Blades

REF NO.	PART NO.	QTY.	DESCRIPTION
1	6645968	1	52" MOWER HOUSING ASSEMBLY (Includes safety decals)
2	5045997B	1	SPINDLE COVER, RH
3	5045999B	1	SPINDLE COVER, Center
4	5045998B	1	SPINDLE COVER, LH
5	5022319	10	KNOB
6	5022308	10	BODY CLIP, 5/16-18
7	5041668B	1	DISCHARGE CHUTE
8	5025011X8	2	BOLT, 5/16-18 x 1
9	5025057	2	NUT, 5/16-18 Hex Nylon Lock
10	5025040	3	NUT, 5/8-11 Hex
11	5041477	18	SPACER, .63 x 1.06 x .23
12	5050407X9	3	KEY, 1/4 SQ. X 2-1/2
13	5030301	3	SPINDLE ASSEMBLY, Complete
14	5041480	3	SPINDLE SHAFT
15	5020864	6	SNAP RING, External
16	5020866	6	SNAP RING, Internal
17	5041653	3	SPINDLE WASHER, Top
18	5020828	6	BEARING
19	5030293	3	SPINDLE HOUSING
20	5020095	3	GREASE FITTING
21	5041672	3	SPINDLE WASHER, Bottom
22	5025011X10	12	BOLT, 5/16-18 x 1-1/4
23	5025139	12	NUT, 5/16-18 Hex Large Serrated Flange
24	5021227	3	MOWER BLADE, 18"
25	5025159	3	WASHER, 5/8" USS
26	5025019X76	3	BOLT, 5/8-11 x 9-1/2

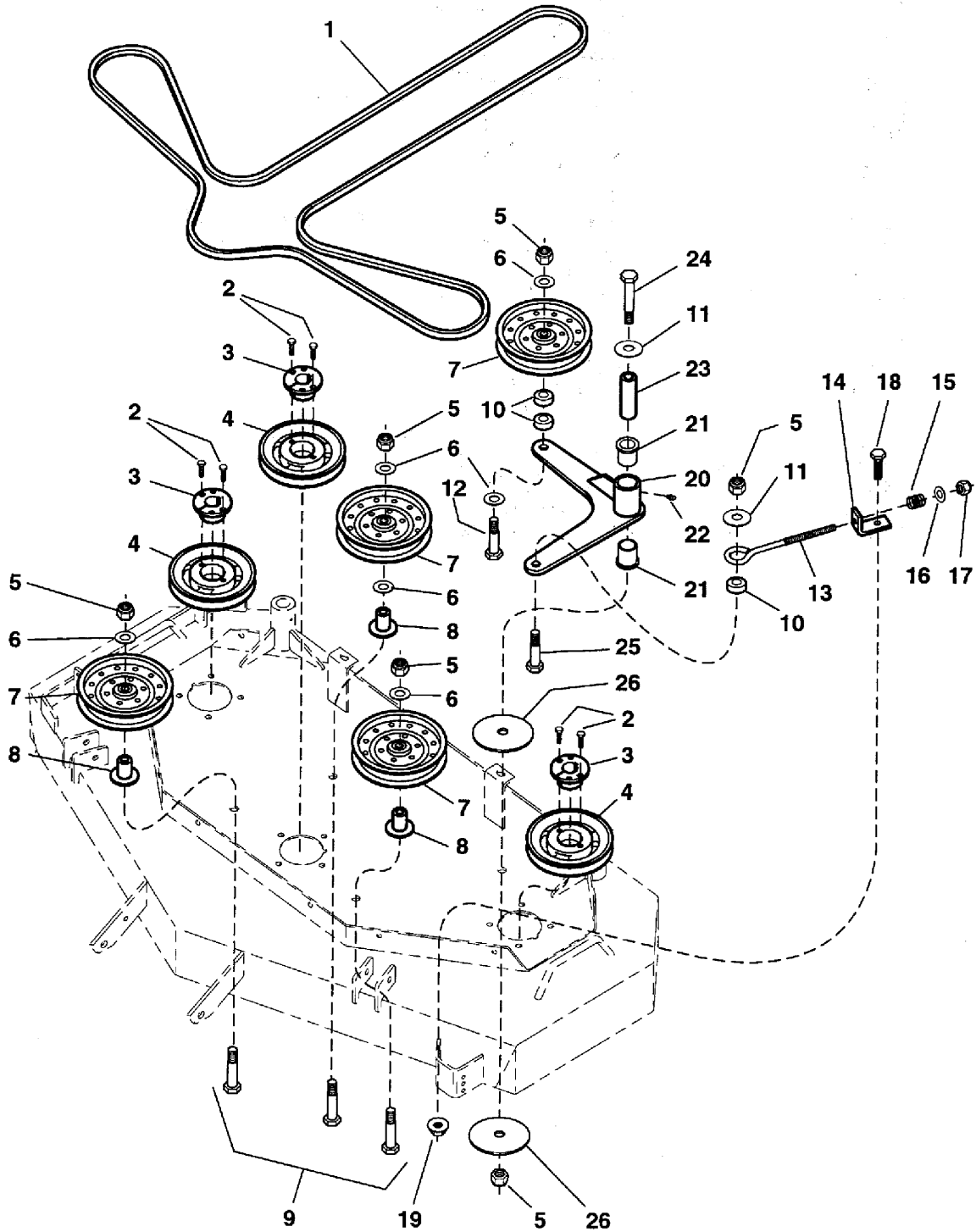
Footnotes

The above parts group applies to the following Mfg. Nos.:

5900222 (DDSH52)

52" Quick Adjust Mower Deck - Pulleys, Belt & Idler Arm

NOTE: Unless noted otherwise,
use the standard hardware torque
specification chart.



The above parts group applies to the following Mfg. Nos.:
5900222 (DDSH52)

52" Quick Adjust Mower Deck - Pulleys, Belt & Idler Arm

REF NO.	PART NO.	QTY.	DESCRIPTION
1	5022435	1	BELT, 52" Deck
2	5025010X8	6	BOLT, 1/4-20 x 1
3	5020819	3	BUSHING, Tapered Hub
4	5020814	3	PULLEY, Spindle
5	5025056	5	NUT, 1/2-13 Hex Nylon Lock
6	5025158	6	WASHER, 1/2" SAE
7	5021976	4	PULLEY, Idler
8	5045024B	3	IDLER PULLEY MOUNT
9	5025017X28	3	BOLT, 1/2-13 x 3-1/2
10	5045023	3	SPACER, .52 x 1.00 x .44
11	5025150	2	WASHER, 1/2" USS
12	5025017X24	1	BOLT, 1/2-13 x 3
13	5021811	1	EYEBOLT, 3/8" x 8"
14	5042142B	1	SPRING ANCHOR
15	5021680	1	SPRING, Compression
16	5025156	1	WASHER, 3/8" SAE
17	5025096	1	NUT, 3/8-16 Hex Nylon Lock
18	5025013X8	1	BOLT, 3/8-16 x 1
19	5025128	1	NUT, 3/8-16 Hex Serrated Flange
20	5045972B	1	IDLER ARM
21	5021541	2	BUSHING, Flange
22	5020095	1	GREASE FITTING
23	5045022	1	SPACER, .52 x 1.00 x 3.50
24	5025017X36	1	BOLT, 1/2-13 x 4-1/2
25	5025017X14	1	BOLT, 1/2-13 x 1-3/4
26	5044677	2	WASHER, Reinforcement

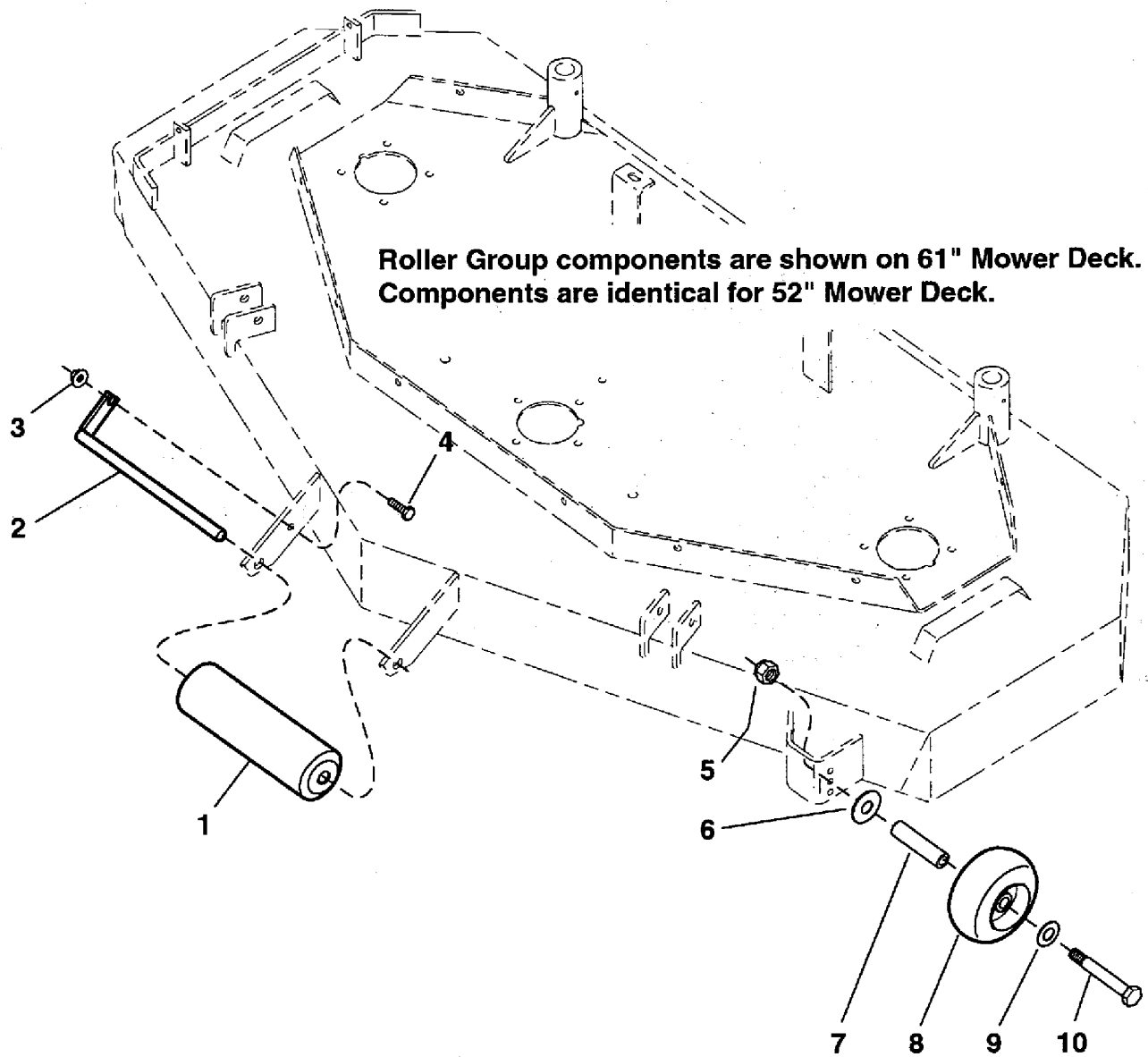
Footnotes

The above parts group applies to the following Mfg. Nos.:

5900222 (DDSH52)

52" & 61" Quick Adjust Mower Deck - Rollers & Casters

NOTE: Unless noted otherwise,
use the standard hardware torque
specification chart.



The above parts group applies to the following Mfg. Nos.:

5900223 (DDSH61)

5900222 (DDSH52)

52" & 61" Quick Adjust Mower Deck - Rollers & Casters

REF NO.	PART NO.	QTY.	DESCRIPTION
1	5020785	1	ROLLER
2	5041653	1	SPINDLE WASHER, Top
3	5025128	1	NUT, 3/8-16 Hex Serrated Flange
4	5025013X8	1	BOLT, 3/8-16 x 1
5	5025096	2	NUT, 3/8-16 Hex Nylon Lock
6	5025305	1	WASHER, 3/8 x 1-3/4
7	5045992	1	SPACER, .39 x .63 x 2.56
8	1716353	1	GAUGE WHEEL
9	5025165	1	WASHER, 3/8" Fender
10	5025013X28	1	BOLT, 3/8-16 x 3-1/2

Footnotes

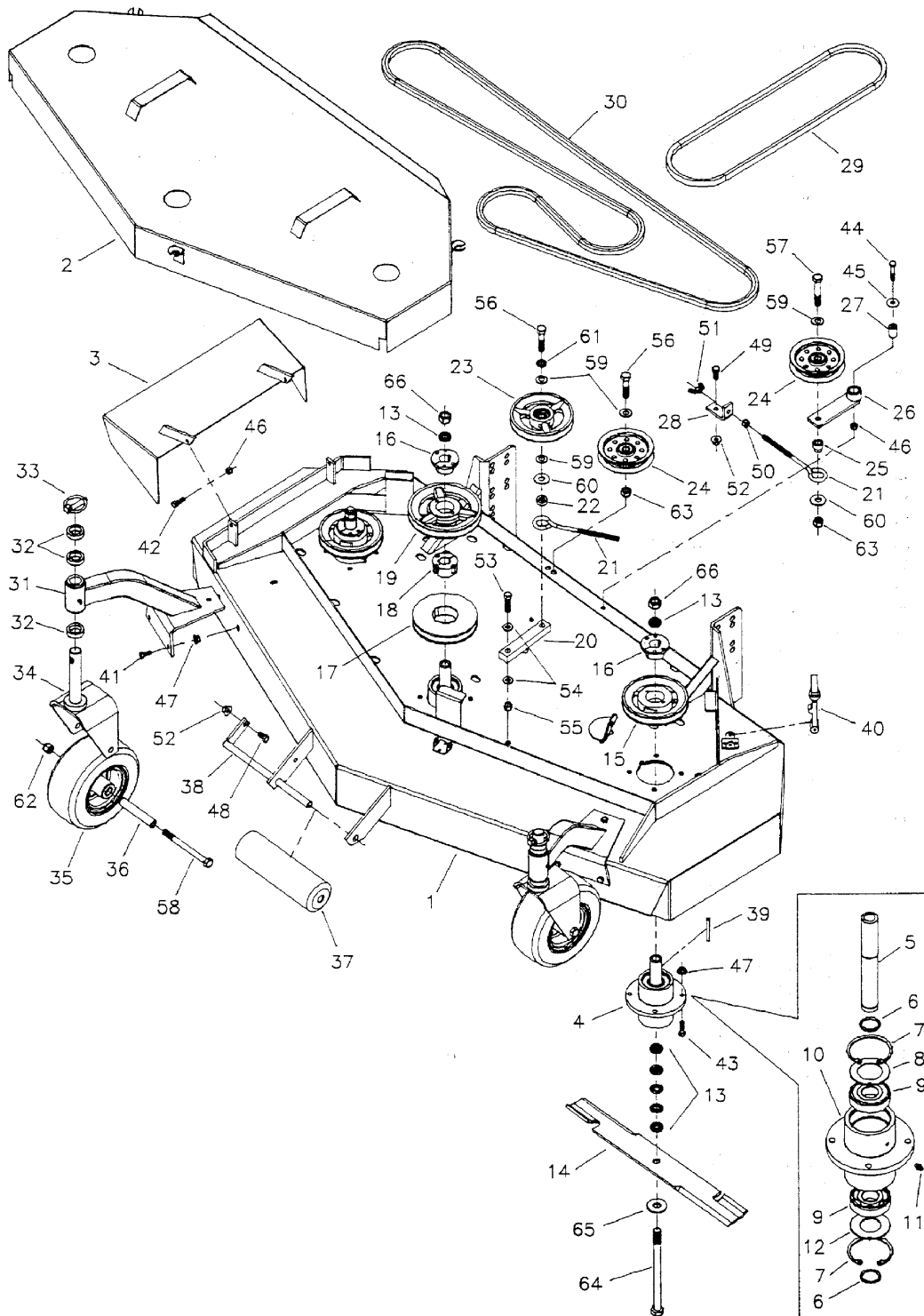
The above parts group applies to the following Mfg. Nos.:

5900223 (DDSH61)

5900222 (DDSH52)

61" Mower Deck - Complete

NOTE: Unless noted otherwise,
use the standard hardware torque
specification chart.



The above parts group applies to the following Mfg. Nos.:
5901115 (DDS61)

61" Mower Deck - Complete

REF NO.	PART NO.	QTY.	DESCRIPTION
1	6630724		61" MOWER HOUSING ASSEMBLY (Includes safety decals)
2	5030725B		61" DECK GUARD
3	5041668B		DISCHARGE CHUTE
4	5030301		SPINDLE ASSEMBLY, Complete
5	5041480		SPINDLE SHAFT
6	5020864		SNAP RING, External
7	5020866		SNAP RING, Internal
8	5041653		SPINDLE WASHER, Top
9	5020828		BEARING
10	5030293		SPINDLE HOUSING
11	5020095		GREASE FITTING
12	5041672		SPINDLE WASHER, Bottom
13	5041477		SPACER, .63 x 1.06 x .23
14	5020842		MOWER BLADE, 21"
15	5020814		PULLEY, Spindle
16	5020819		BUSHING, Tapered Hub
17	5022159		PULLEY, Taper Lock
18	5022160		BUSHING, Taper Lock
19	5020815		PULLEY, Spindle
20	5044610B		ARM, Idler
21	5021811		EYEBOLT, 3/8" x 8"
22	5044609		SPACER, .52 X 1.00 X .38
23	5030819		IDLER PULLEY, Complete
-	5041481		PULLEY, Idler
-	5020827		BEARING
-	5020870		INSERT, Bearing
-	5020865		SNAP RING, Internal
24	5044098		PULLEY, Idler
25	5021168		INSERT, Bearing Shoulder
26	5044687B		ARM, Idler
-	5020876B		BUSHING, Brass
27	5042134		SPACER, .32 x .75 x 1.06
28	5042142B		SPRING ANCHOR
29	5021510		BELT, Deck Drive
30	5020824		BELT, Blade Spindle
31	5043887		CASTER MOUNT, Complete
-	5021541		BUSHING, Flange
-	5021728		GREASE FITTING
32	5041476		SPACER, 1.02 x 1.56 x .50
33	5020655		PIN, Lynch
34	5041702B		YOKE, Caster

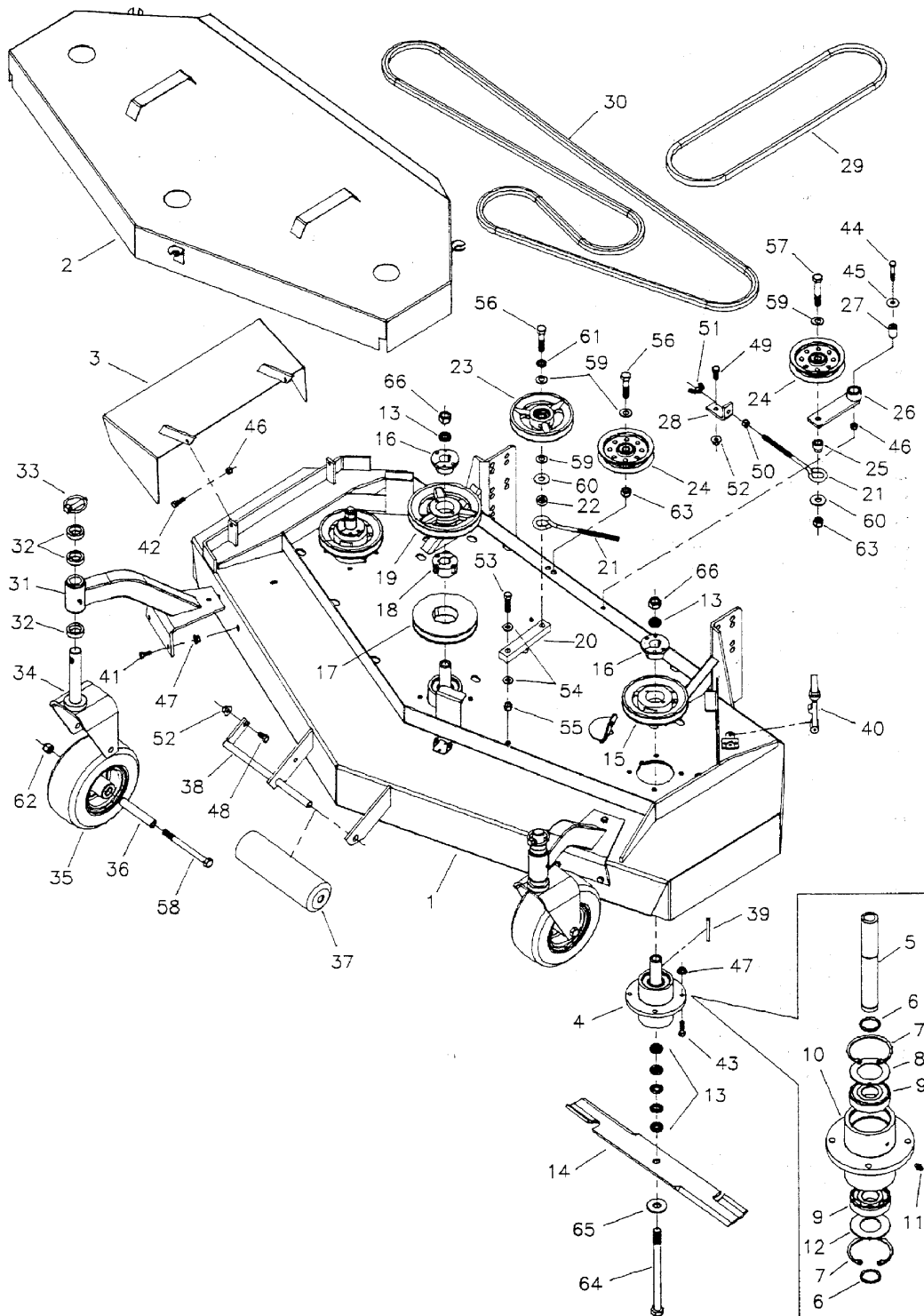
Footnotes

The above parts group applies to the following Mfg. Nos.:

5901115 (DDS61)

61" Mower Deck - Complete

NOTE: Unless noted otherwise,
use the standard hardware torque
specification chart.



The above parts group applies to the following Mfg. Nos.:
5901115 (DDS61)

61" Mower Deck - Complete

REF NO.	PART NO.	QTY.	DESCRIPTION
35	5021181		WHEEL & TIRE ASSEMBLY, White, 9 x 3.5 x 4, Complete
36	5041657		AXLE, Caster Wheel
37	5020785		ROLLER
38	5041655B		PIN, Roller Mount
39	5050407X9		KEY, 1/4 SQ. X 2-1/2
40	5020841X1		RUBBER LATCH
41	5025011X6		BOLT, 5/16-18 x 3/4
42	5025011X8		BOLT, 5/16-18 x 1
43	5025011X10		BOLT, 5/16-18 x 1-1/4
44	5025011X14		BOLT, 5/16-18 x 1-3/4
45	5025164		WASHER, 5/16" Fender
46	5025057		NUT, 5/16-18 Hex Nylon Lock
47	5025139		NUT, 5/16-18 Hex Large Serrated Flange
48	5025013X6		BOLT, 3/8-16 x 3/4
49	5025013X8		BOLT, 3/8-16 x 1
50	5025034		NUT, 3/8-16 Hex
51	5025143		NUT, 3/8-16 Wing Nylon Lock
52	5025128		NUT, 3/8-16 Hex Serrated Flange
53	5025016X14		BOLT, 7/16-20 X 1-3/4
54	5025157		WASHER, 7/16" SAE
55	5025094		NUT, 7/16-20 Hex Nylon Lock
56	5025018X18		BOLT, 1/2-20 x 2-1/4
57	5025018X24		BOLT, 1/2-20 x 3
58	5025017X44		BOLT, 1/2-13 x 5-1/2
59	5025158		WASHER, 1/2" SAE
60	5025150		WASHER, 1/2" USS
61	5025173		WASHER, 1/2" Lock
62	5025056		NUT, 1/2-13 Hex Nylon Lock
63	5025098		NUT, 1/2-20 Hex Nylon Lock
64	5025019X76		BOLT, 5/8-11 x 9-1/2
65	5025159		WASHER, 5/8" USS
66	5025040		NUT, 5/8-11 Hex

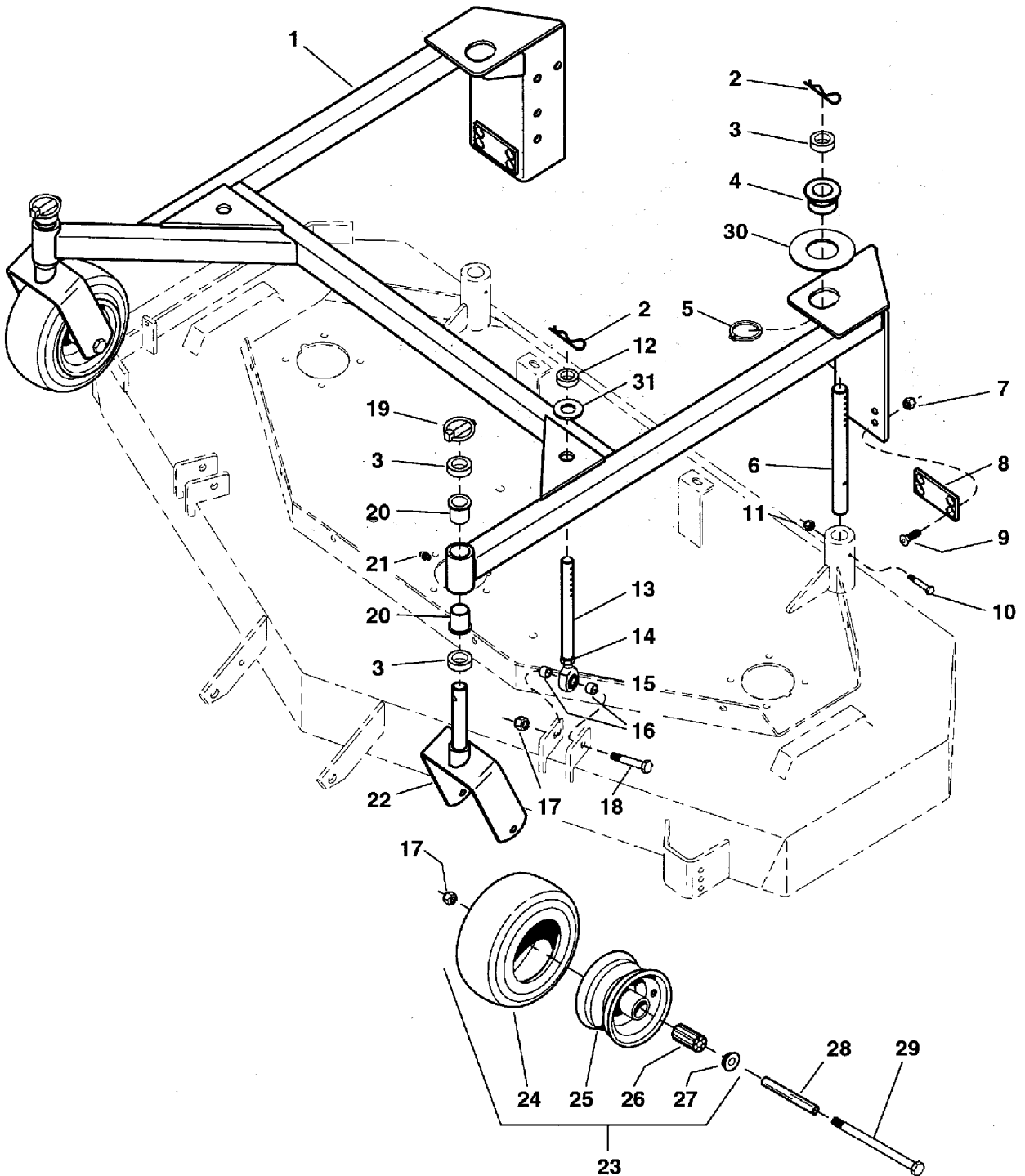
Footnotes

The above parts group applies to the following Mfg. Nos.:

5901115 (DDS61)

61" Quick Adjust Mower Deck - Frame, Caster & Shield

NOTE: Unless noted otherwise,
use the standard hardware torque
specification chart.



The above parts group applies to the following Mfg. Nos.:
5900223 (DDSH61)

61" Quick Adjust Mower Deck - Frame, Caster & Shield

REF NO.	PART NO.	QTY.	DESCRIPTION
1	5045987B	1	61" MOUNT FRAME
2	5025302	4	HAIRPIN CLIP
3	5041476	6	SPACER, 1.02 x 1.56 x .50
4	5045979	2	DECK HEIGHT BUSHING
5	5022455	2	SNAP RING, External
6	5045980	2	ADJUSTMENT ROD, Rear
7	5025045	8	NUT, 5/16-24, Hex Nylon Lock
8	5100780	2	FRICTION PLATE
9	5025303	8	SCREW, Flat Head, Socket, 5/16-18 x 1
10	5025010X18	2	BOLT, 1/4-20 x 2-1/4
11	5025095	2	NUT, 1/4-20 Hex Nylon Lock
12	5046011	2	SPACER, .76 x 1.25 x .50
13	5045981	2	ADJUSTMENT ROD, Front
14	-	2	NUT, 1/2-20 Hex
15	5022434	2	BALL JOINT, 1/2-20 Male
16	5020870	4	INSERT, Bearing
17	5025056	4	NUT, 1/2-13 Hex Nylon Lock
18	5025017X24	2	BOLT, 1/2-13 x 3
19	5020655	2	PIN, Lynch
20	5021541	4	BUSHING, Flange
21	5020095	2	GREASE FITTING
22	5045993B	2	CASTER YOKE
23	5022433S	2	WHEEL & TIRE ASSEMBLY, 11 x 4.0 x 5, Complete (Includes Ref No. 24 - 27)
24	5022433X1	2	TIRE, Front 11 x 4.0 x 5
25	5022433SX2	2	WHEEL ASSEMBLY, for 11 x 4.0 x 5 Tires, Complete (Includes Ref No. 26 & 27)
26	5021042	4	BEARING, Roller (2 per tire)
27	5021043	4	RETAINER, Bearing (2 per tire)
28	5045996	2	AXLE, Front Caster
29	5025017X52	2	BOLT, 1/2-13 x 6-1/2
30	5025304	2	WASHER, 1-1/2" SAE
31	5025160	2	WASHER, 3/4" SAE

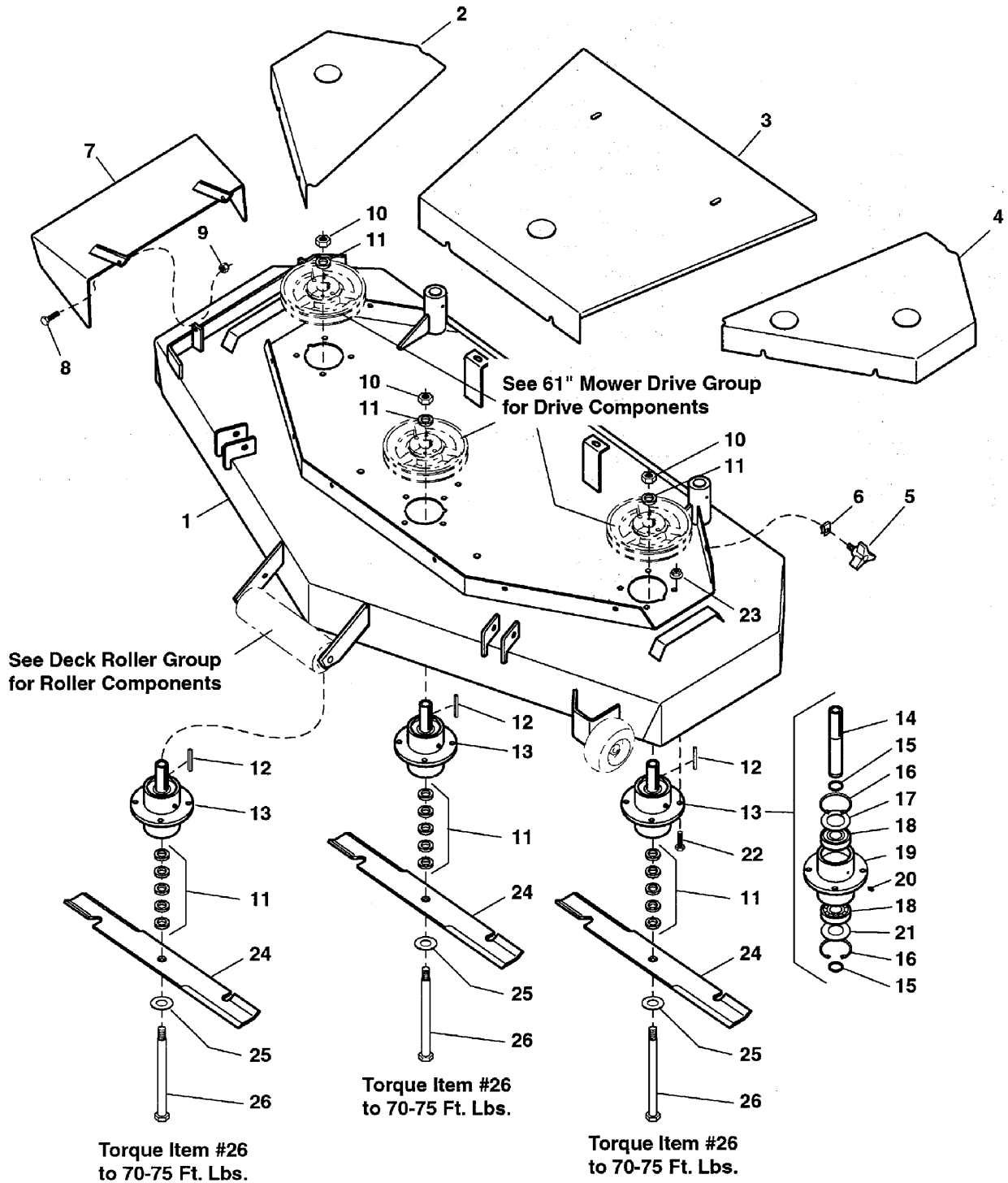
Footnotes

The above parts group applies to the following Mfg. Nos.:

5900223 (DDSH61)

61" Quick Adjust Mower Deck - Housing, Covers, Spindles & Blades

NOTE: Unless noted otherwise, use the standard hardware torque specification chart.



The above parts group applies to the following Mfg. Nos.:
5900223 (DDSH61)

61" Quick Adjust Mower Deck - Housing, Covers, Spindles & Blades

REF NO.	PART NO.	QTY.	DESCRIPTION
1	6645988	1	61" MOWER HOUSING ASSEMBLY (Includes safety decals)
2	5046005B	1	SPINDLE COVER, RH
3	5046006B	1	SPINDLE COVER, Center
4	5046004B	1	SPINDLE COVER, LH
5	5022319	10	KNOB
6	5022308	10	BODY CLIP, 5/16-18
7	5041668B	1	DISCHARGE CHUTE
8	5025011X8	2	BOLT, 5/16-18 x 1
9	5025057	2	NUT, 5/16-18 Hex Nylon Lock
10	5025040	3	NUT, 5/8-11 Hex
11	5041477	18	SPACER, .63 x 1.06 x .23
12	5050407X9	3	KEY, 1/4 SQ. X 2-1/2
13	5030301	3	SPINDLE ASSEMBLY, Complete
14	5041480	3	SPINDLE SHAFT
15	5020864	6	SNAP RING, External
16	5020866	6	SNAP RING, Internal
17	5041653	3	SPINDLE WASHER, Top
18	5020828	6	BEARING
19	5030293	3	SPINDLE HOUSING
20	5020095	3	GREASE FITTING
21	5041672	3	SPINDLE WASHER, Bottom
22	5025011X10	12	BOLT, 5/16-18 x 1-1/4
23	5025139	12	NUT, 5/16-18 Hex Large Serrated Flange
24	5020842	3	MOWER BLADE, 21"
25	5025159	3	WASHER, 5/8" USS
26	5025019X76	3	BOLT, 5/8-11 x 9-1/2

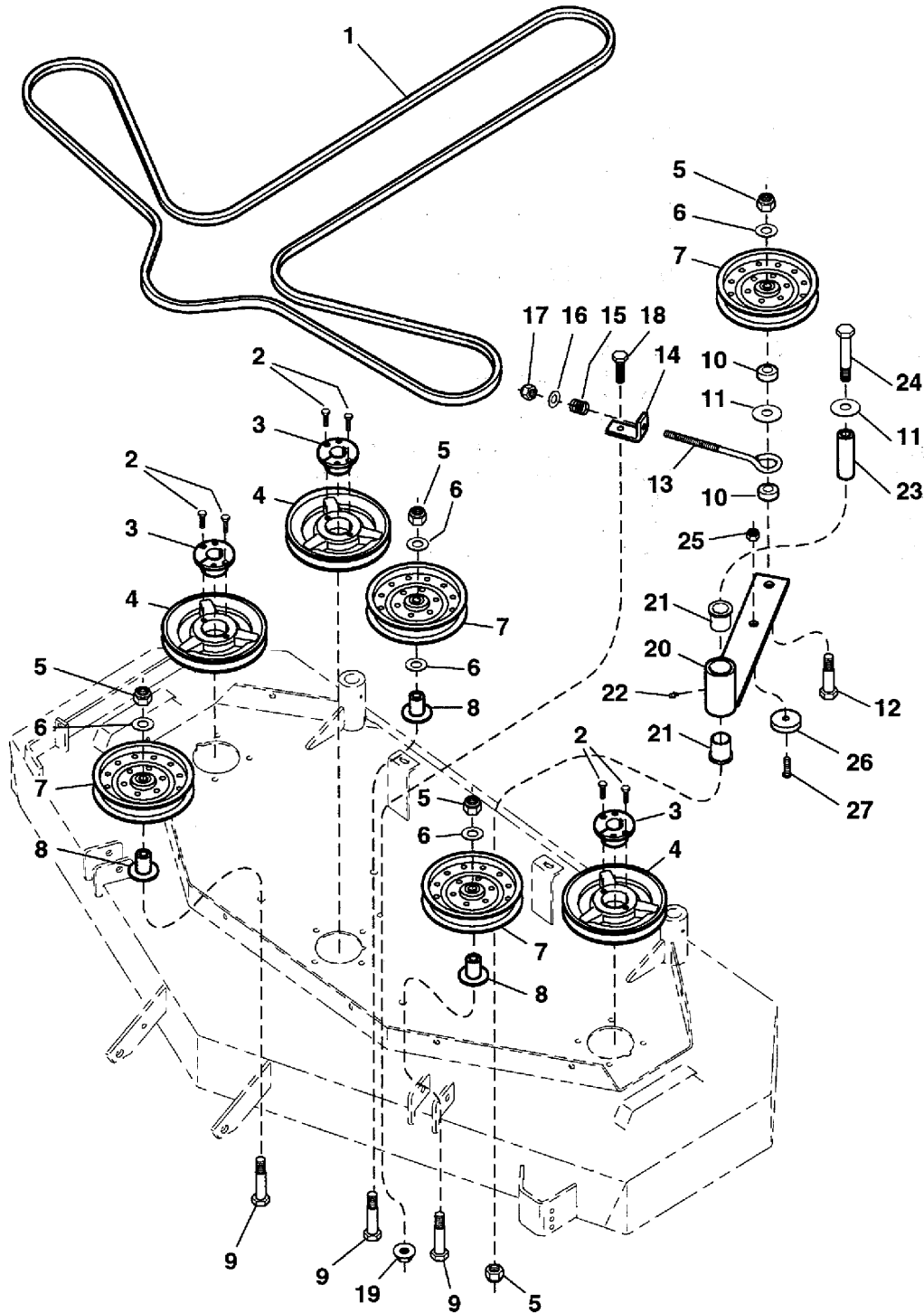
Footnotes

The above parts group applies to the following Mfg. Nos.:

5900223 (DDSH61)

61" Quick Adjust Mower Deck - Pulleys, Belt & Idler Arm

NOTE: Unless noted otherwise,
use the standard hardware torque
specification chart.



The above parts group applies to the following Mfg. Nos.:
5900223 (DDSH61)

61" Quick Adjust Mower Deck - Pulleys, Belt & Idler Arm

REF NO.	PART NO.	QTY.	DESCRIPTION
1	5022061	1	BELT, 61" Deck
2	5025010X8	6	BOLT, 1/4-20 x 1
3	5020819	3	BUSHING, Tapered Hub
4	5020815	3	PULLEY, Spindle
5	5025056	5	NUT, 1/2-13 Hex Nylon Lock
6	5025158	5	WASHER, 1/2" SAE
7	5021976	4	PULLEY, Idler
8	5045024B	3	IDLER PULLEY MOUNT
9	5025017X28	3	BOLT, 1/2-13 x 3-1/2
10	5045023	2	SPACER, .52 x 1.00 x .44
11	5025150	2	WASHER, 1/2" USS
12	5025017X24	1	BOLT, 1/2-13 x 3
13	5021811	1	EYEBOLT, 3/8" x 8"
14	5042142B	1	SPRING ANCHOR
15	5021680	1	SPRING, Compression
16	5025156	1	WASHER, 3/8" SAE
17	5025096	1	NUT, 3/8-16 Hex Nylon Lock
18	5025013X8	1	BOLT, 3/8-16 x 1
19	5025128	1	NUT, 3/8-16 Hex Serrated Flange
20	5045019B	1	IDLER ARM
21	5021541	2	BUSHING, Flange
22	5020095	1	GREASE FITTING
23	5045022	1	SPACER, .52 x 1.00 x 3.50
24	5025017X36	1	BOLT, 1/2-13 x 4-1/2
25	5025057	1	NUT, 5/16-18 Hex Nylon Lock
26	5046103	1	SUPPORT, Idler arm
27	5025307	1	SCREW, Flat Head, Socket, 5/16-18 x 1-1/4

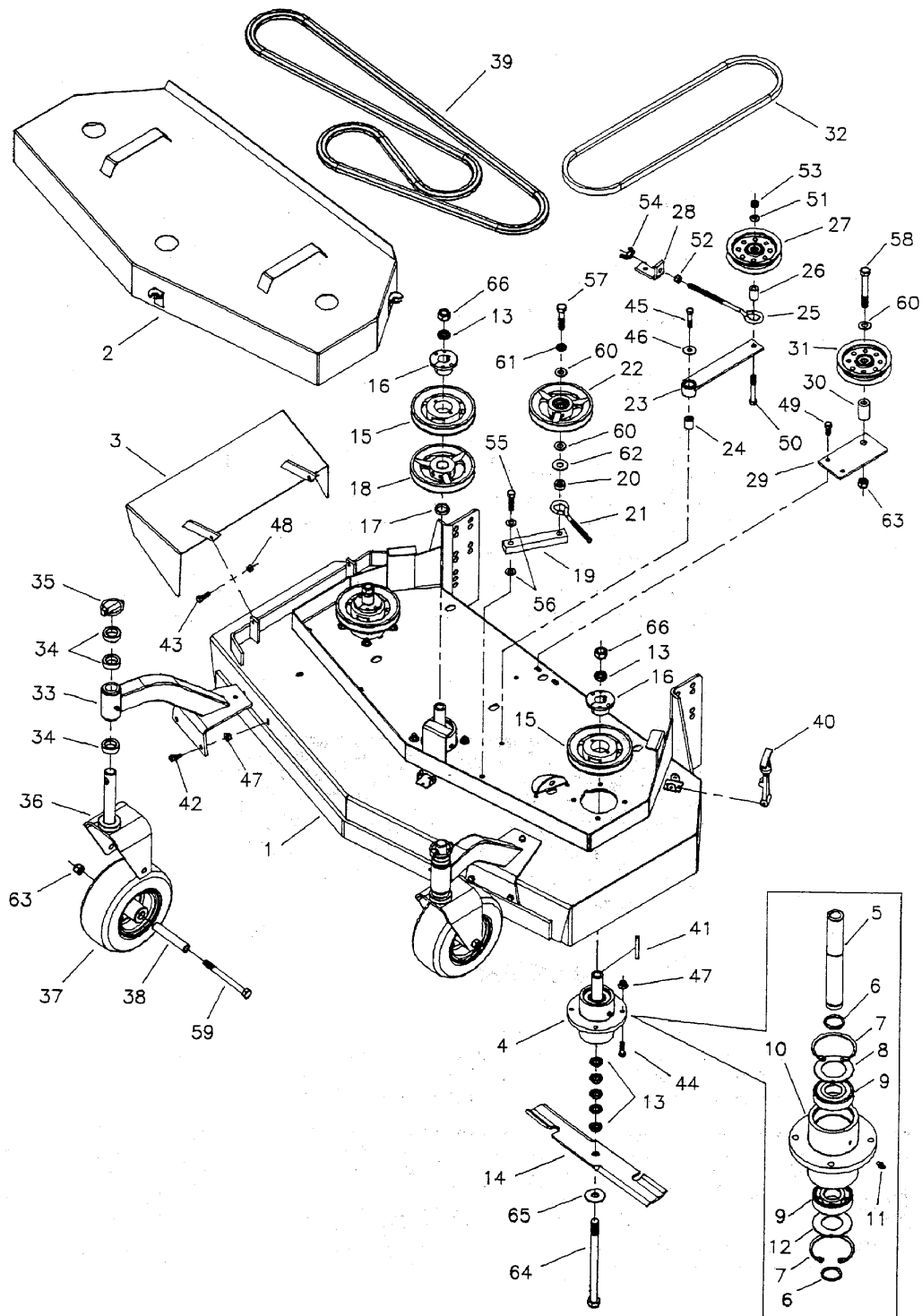
Footnotes

The above parts group applies to the following Mfg. Nos.:

5900223 (DDSH61)

48" Mower Deck - Complete

NOTE: Unless noted otherwise, use the standard hardware torque specification chart.



The above parts group applies to the following Mfg. Nos.:
5900215 (DDS48)

48" Mower Deck - Complete

REF NO.	PART NO.	QTY.	DESCRIPTION
1	6630813		48" MOWER HOUSING ASSEMBLY (Includes safety decals)
2	5030827B		48" DECK GUARD
3	5041668B		DISCHARGE CHUTE
4	5030301		SPINDLE ASSEMBLY, Complete
5	5041480		SPINDLE SHAFT
6	5020864		SNAP RING, External
7	5020866		SNAP RING, Internal
8	5041653		SPINDLE WASHER, Top
9	5020828		BEARING
10	5030293		SPINDLE HOUSING
11	5020095		GREASE FITTING
12	5041672		SPINDLE WASHER, Bottom
13	5041477		SPACER, .63 x 1.06 x .23
14	5020843		MOWER BLADE, 16-1/4"
15	5020814		PULLEY, Spindle
16	5020819		BUSHING, Tapered Hub
17	5041484		SPACER, 1.00 X 1.25 X .25 (S/N: 6289 & below)
17	5021253		SHIM (S/N: 6290 & above)
18	5041478		SPINDLE PULLEY
19	5044610B		ARM, Idler
20	5044609		SPACER, .52 X 1.00 X .38
21	5021811		EYEBOLT, 3/8" x 8"
22	5030819		IDLER PULLEY, Complete
22	5041481		PULLEY, Idler
22	5020827		BEARING
22	5020870		INSERT, Bearing
22	5020865		SNAP RING, Internal
23	5044683B		ARM, Idler
24	5042134		SPACER, .32 x .75 x 1.06
25	5021812		EYEBOLT, 3/8" X 6"
26	5044156		SUPPORT, Idler
27	5043517		PULLEY, Idler
28	5042142B		SPRING ANCHOR
29	5044153B		BRACKET, Idler Pulley
30	5044157		SUPPORT, Idler
31	5044098		PULLEY, Idler
32	5021723		BELT, Deck Drive
33	5043887		CASTER MOUNT, Complete
33	5021541		BUSHING, Flange
33	5021728		GREASE FITTING
34	5041476		SPACER, 1.02 x 1.56 x .50

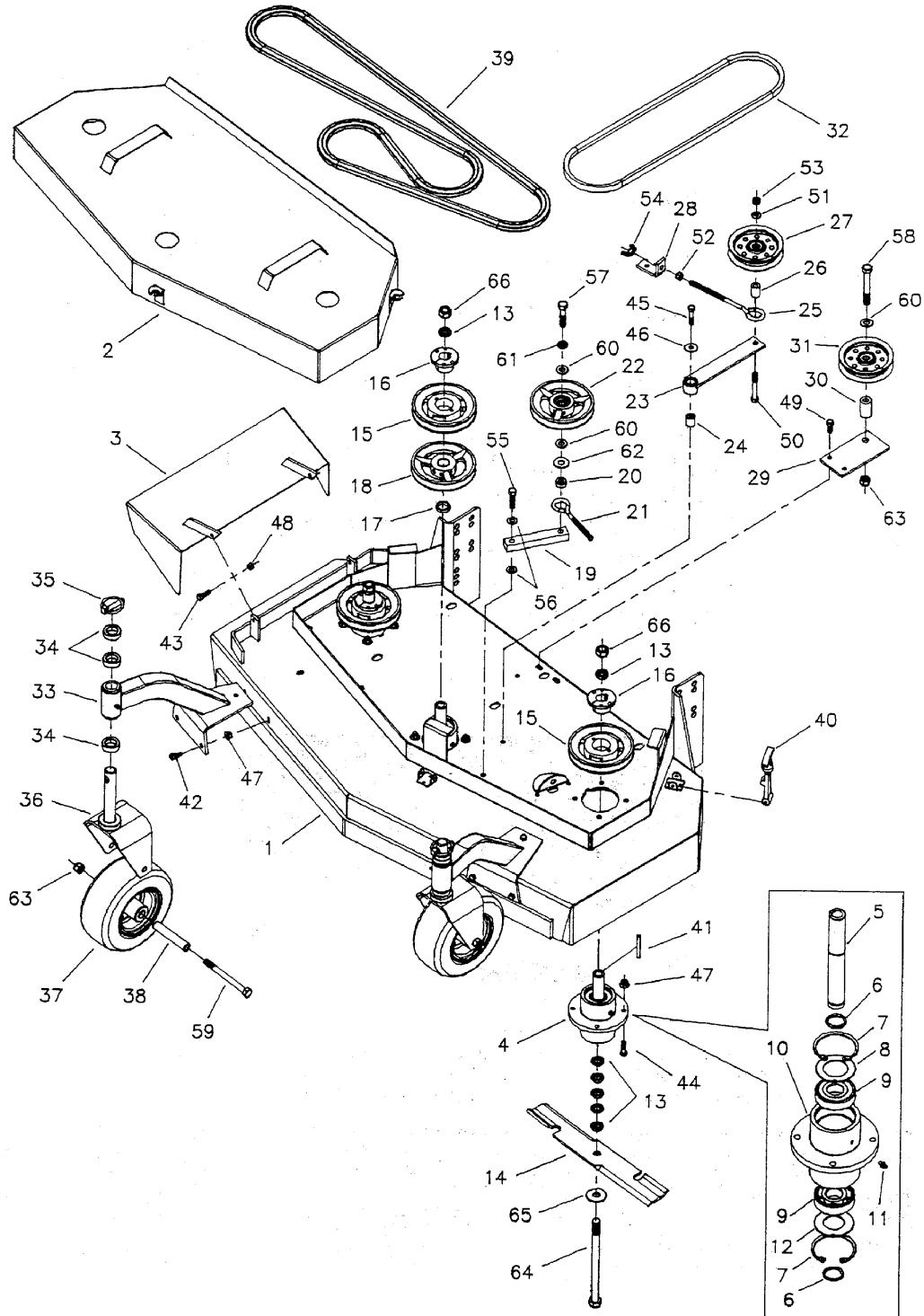
Footnotes

The above parts group applies to the following Mfg. Nos.:

5900215 (DDS48)

48" Mower Deck - Complete

NOTE: Unless noted otherwise, use the standard hardware torque specification chart.



The above parts group applies to the following Mfg. Nos.:
5900215 (DDS48)

48" Mower Deck - Complete

REF NO.	PART NO.	QTY.	DESCRIPTION
35	5020655		PIN, Lynch
36	5041702B		YOKE, Caster
37	5021181		WHEEL & TIRE ASSEMBLY, White, 9 x 3.5 x 4, Complete
38	5041657		AXLE, Caster Wheel
39	5020873		BELT, Blade Spindle
40	5020841X1		RUBBER LATCH
41	5050407X9		KEY, 1/4 SQ. X 2-1/2
42	5025011X6		BOLT, 5/16-18 x 3/4
43	5025011X8		BOLT, 5/16-18 x 1
44	5025011X10		BOLT, 5/16-18 x 1-1/4
45	5025011X14		BOLT, 5/16-18 x 1-3/4
46	5025164		WASHER, 5/16" Fender
47	5025139		NUT, 5/16-18 Hex Large Serrated Flange
48	5025057		NUT, 5/16-18 Hex Nylon Lock
49	5025013X8		BOLT, 3/8-16 x 1
50	5025013X24		BOLT, 3/8-16 x 3
51	5025156		WASHER, 3/8" SAE
52	5025034		NUT, 3/8-16 Hex
53	5025096		NUT, 3/8-16 Hex Nylon Lock
54	5025143		NUT, 3/8-16 Wing Nylon Lock
55	5025016X14		BOLT, 7/16-20 X 1-3/4
56	5025157		WASHER, 7/16" SAE
57	5025018X18		BOLT, 1/2-20 x 2-1/4
58	5025017X32		BOLT, 1/2-13 x 4
59	5025017X44		BOLT, 1/2-13 x 5-1/2
60	5025158		WASHER, 1/2" SAE
61	5025150		WASHER, 1/2" USS
62	5025056		NUT, 1/2-13 Hex Nylon Lock
63	5025019X76		BOLT, 5/8-11 x 9-1/2
64	5025159		WASHER, 5/8" USS
65	5025040		NUT, 5/8-11 Hex

Footnotes

The above parts group applies to the following Mfg. Nos.:

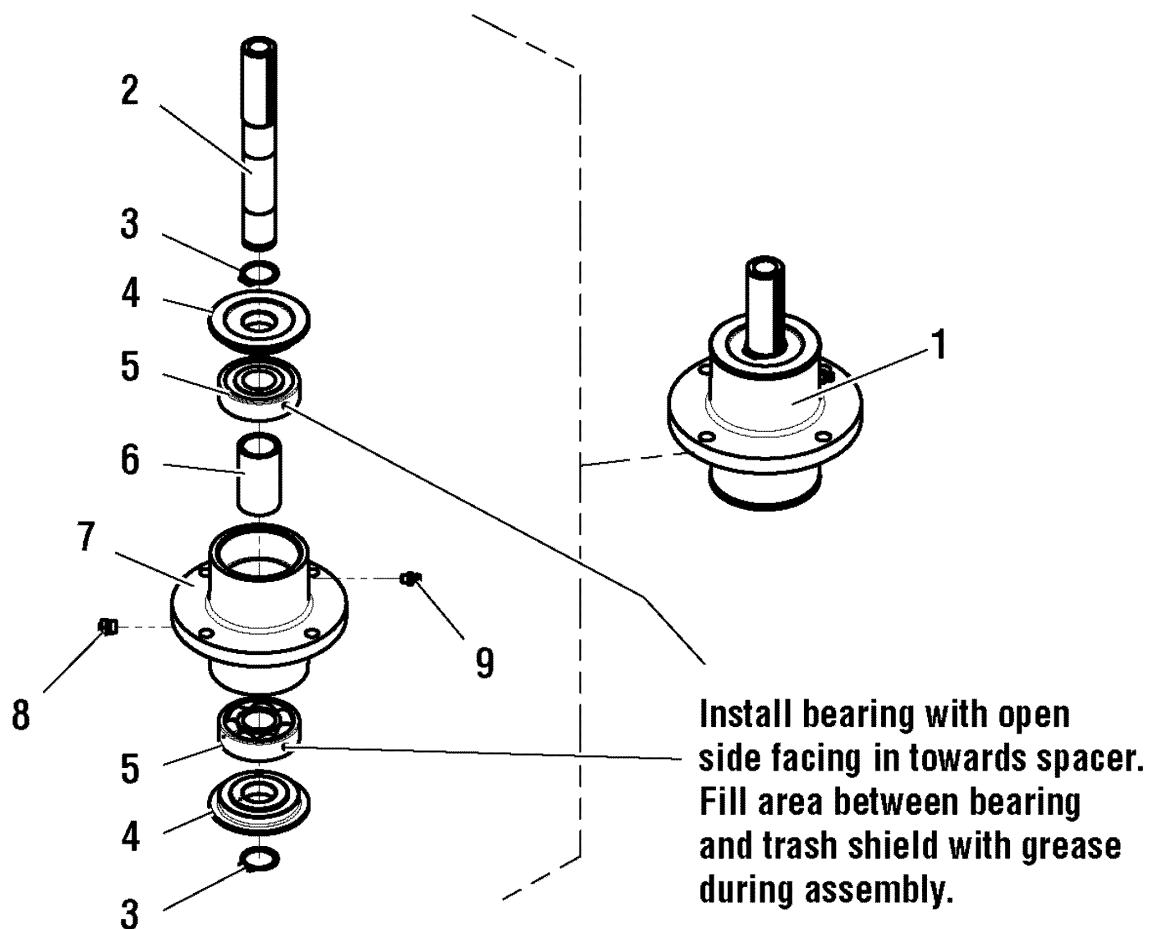
5900215 (DDS48)

Spindle Service Parts (S/N: 6175 & Above)

NOTE: Unless noted otherwise, use the standard hardware torque specification chart.

NOTE: These spindle service parts only apply to units that are S/N: 6175 & Above, or units that have upgraded to the 5061033 spindle.

5061033 Spindle Replacement Parts



The above parts group applies to the following Mfg. Nos.:

- 5900222 (DDSH52)
- 5900223 (DDSH61)
- 5900218 (DDS52)
- 5900215 (DDS48)
- 5901115 (DDS61)

Spindle Service Parts (S/N: 6175 & Above)

REF NO.	PART NO.	QTY.	DESCRIPTION
1	5061033	1	ASSM, SPINDLE, THRU BORE
2	5061035	1	SHAFT, SPINDLE
3	5023335	2	RING, RETAINING, 63/64", EXT
4	5049793	2	SHIELD, TRASH
5	5023330	2	BEARING, .98 X 2.44 X .67
6	5061059	1	SPACER, 1.01 X 1.25 X 2.17
7	5061031	1	HOUSING, SPINDLE
8	5023296	1	FITTING, RELIEF, 1-5 PSI
9	5020095	1	GREASE FITTING, 1/4-28 STR

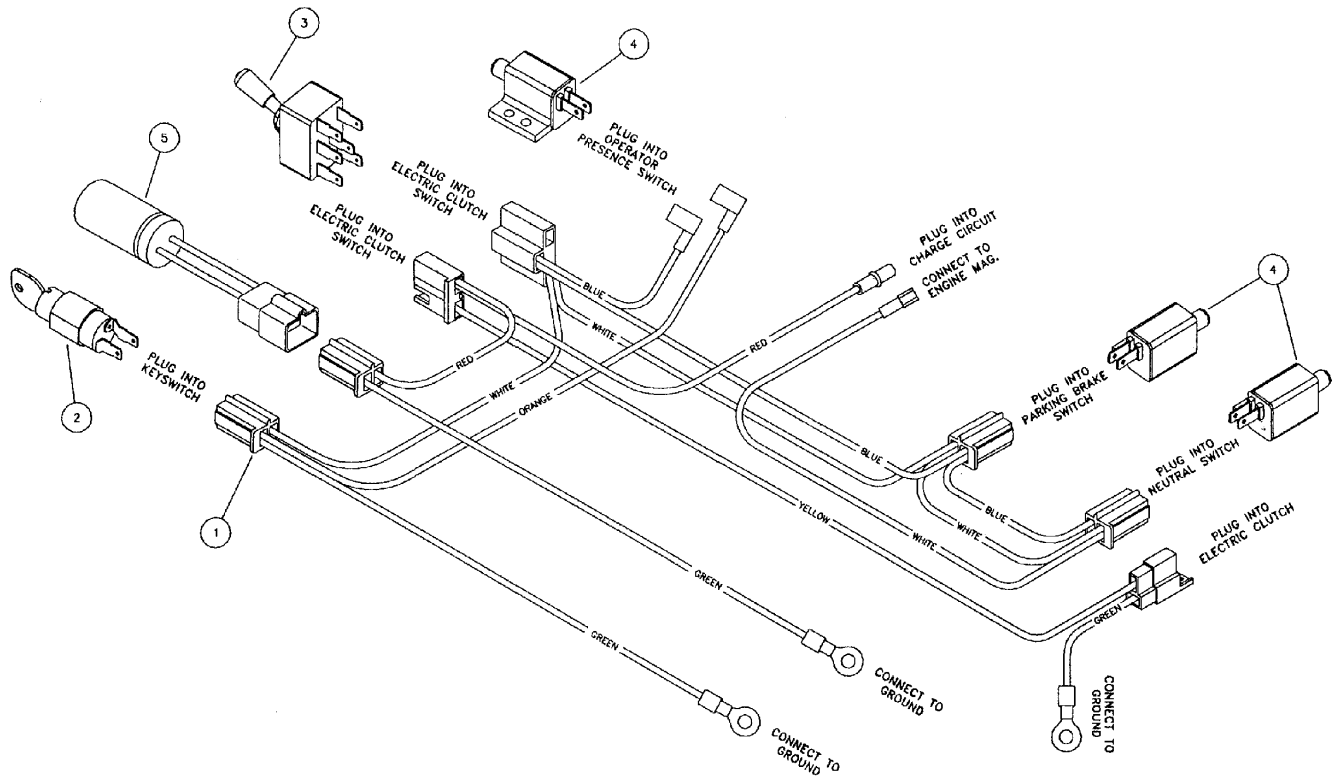
Footnotes

The above parts group applies to the following Mfg. Nos.:

5900222 (DDSH52)
5900223 (DDSH61)
5900218 (DDS52)
5900215 (DDS48)
5901115 (DDS61)

Electrical Group - 18HP Briggs Manual Start

NOTE: Unless noted otherwise,
use the standard hardware torque
specification chart.



The above parts group applies to the following Mfg. Nos.:
DDSBV

Electrical Group - 18HP Briggs Manual Start

REF NO.	PART NO.	QTY.	DESCRIPTION
1	5031079		DDSBV WIRING HARNESS (Complete w/ Capacitor Harness)
2	5021842		SWITCH, Ignition, Complete
3	5021545		SWITCH, Electric Clutch
4	5021769		SWITCH, Plunger, NC
5	5045116		DDSBV Capacitor Harness

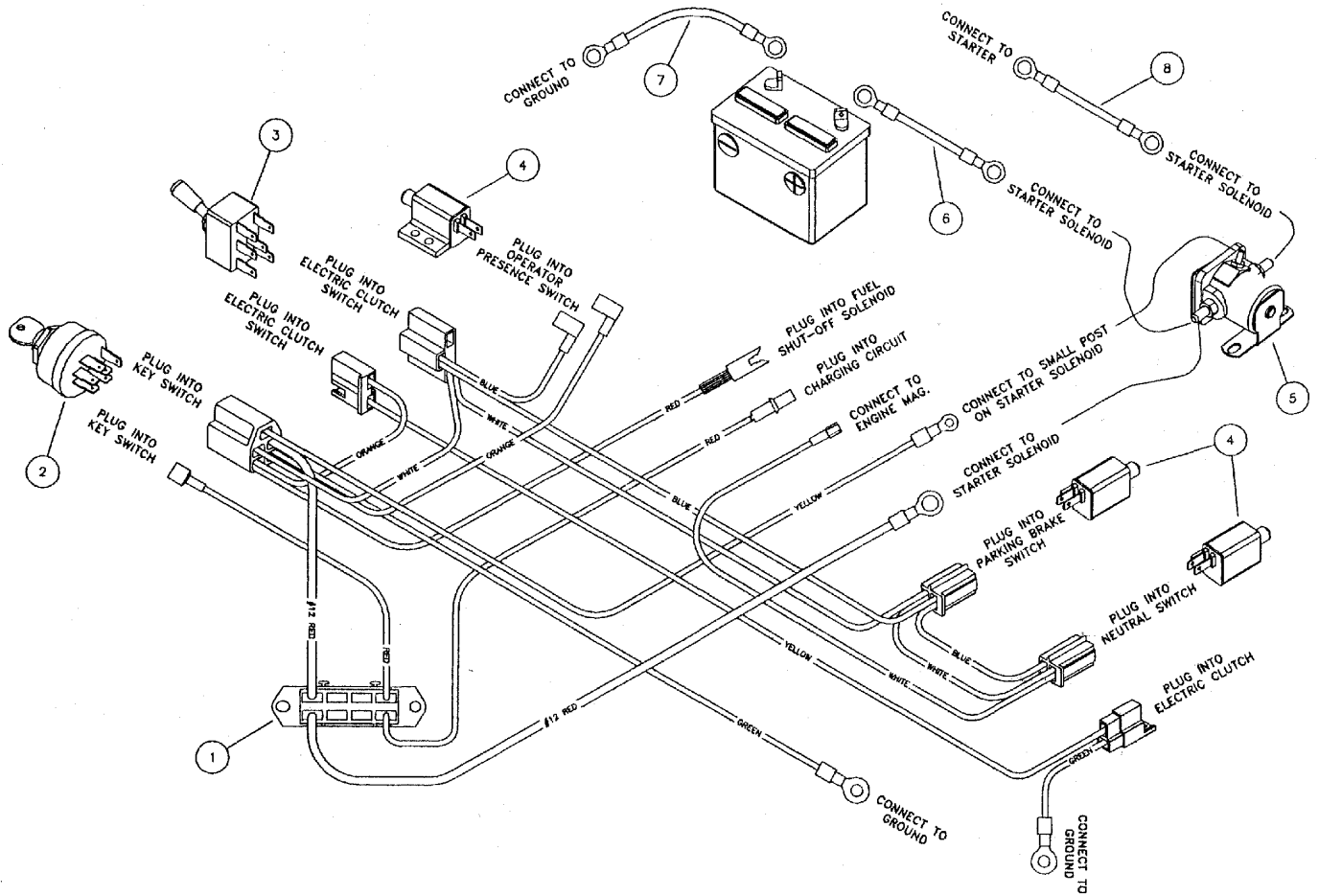
Footnotes

The above parts group applies to the following Mfg. Nos.:

DDSBV

Electrical Group - 18HP Briggs Electric Start

NOTE: Unless noted otherwise,
use the standard hardware torque
specification chart.



The above parts group applies to the following Mfg. Nos.:
DDSBVE

Electrical Group - 18HP Briggs Electric Start

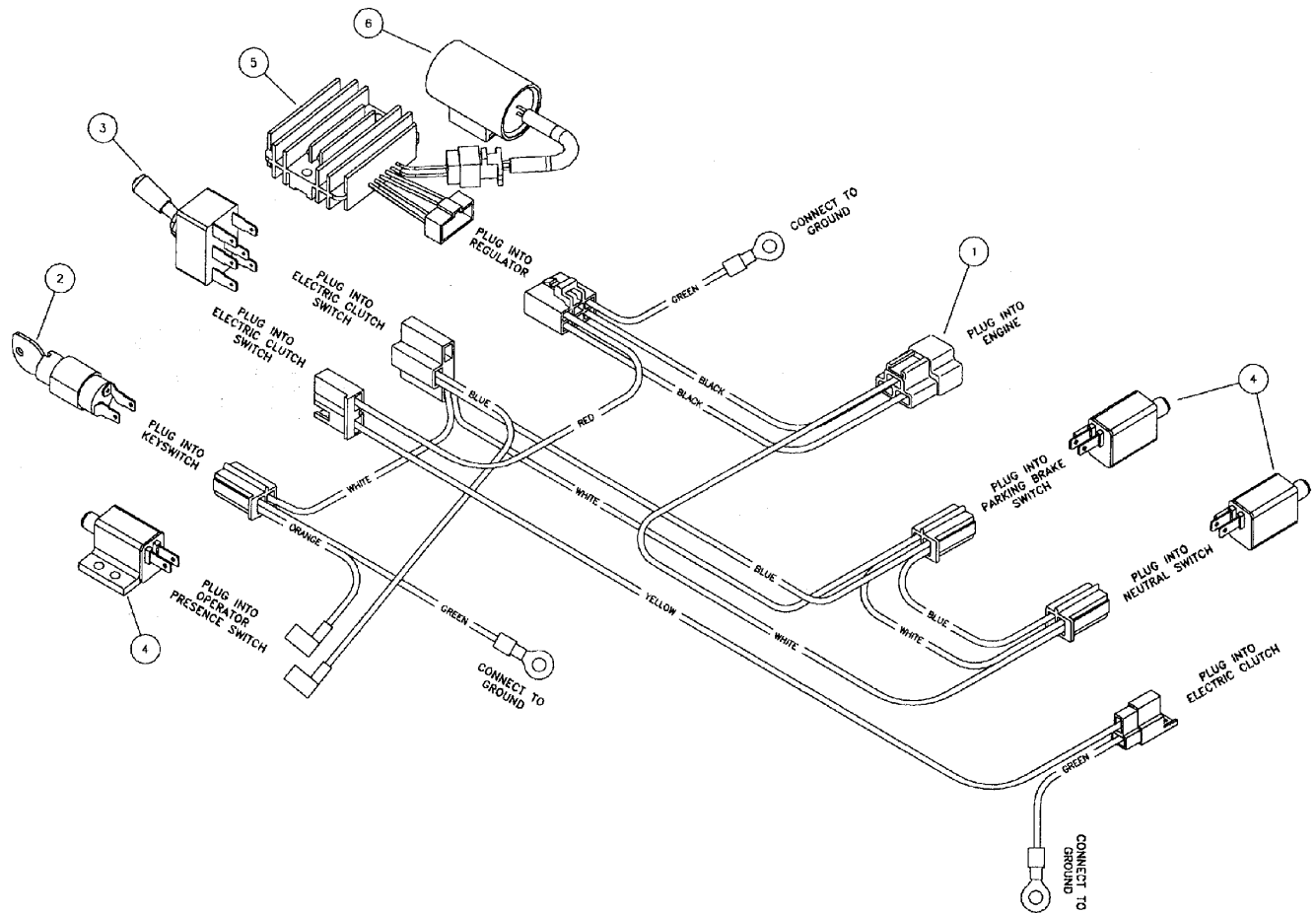
REF NO.	PART NO.	QTY.	DESCRIPTION
1	5031038		DDSBVE Wire Harness
2	5021842		SWITCH, Ignition, Complete
3	5021545		SWITCH, Electric Clutch
4	5021769		SWITCH, Plunger, NC
5	5020801		SOLENOID, Starter
6	5021542		POSITIVE (+) BATTERY CABLE, 30"
7	5021406		NEGATIVE (-) BATTERY CABLE, 22"
8	5021405		POSITIVE (+) BATTERY CABLE, 22"

Footnotes

The above parts group applies to the following Mfg. Nos.:
DDSBVE

Electrical Group - 14HP Kawasaki Manual Start

NOTE: Unless noted otherwise,
use the standard hardware torque
specification chart.



The above parts group applies to the following Mfg. Nos.:
5901024 (DDSKA)

Electrical Group - 14HP Kawasaki Manual Start

REF NO.	PART NO.	QTY.	DESCRIPTION
1	5031037		DDSKA WIRING HARNESS
2	5021842		SWITCH, Ignition, Complete
3	5021545		SWITCH, Electric Clutch
4	5021769		SWITCH, Plunger, NC
5	-		REGULATOR, Kawasaki #21066-2071 (14HP)
6	-		CONDENSER, Kawasaki #21013-2064

Footnotes

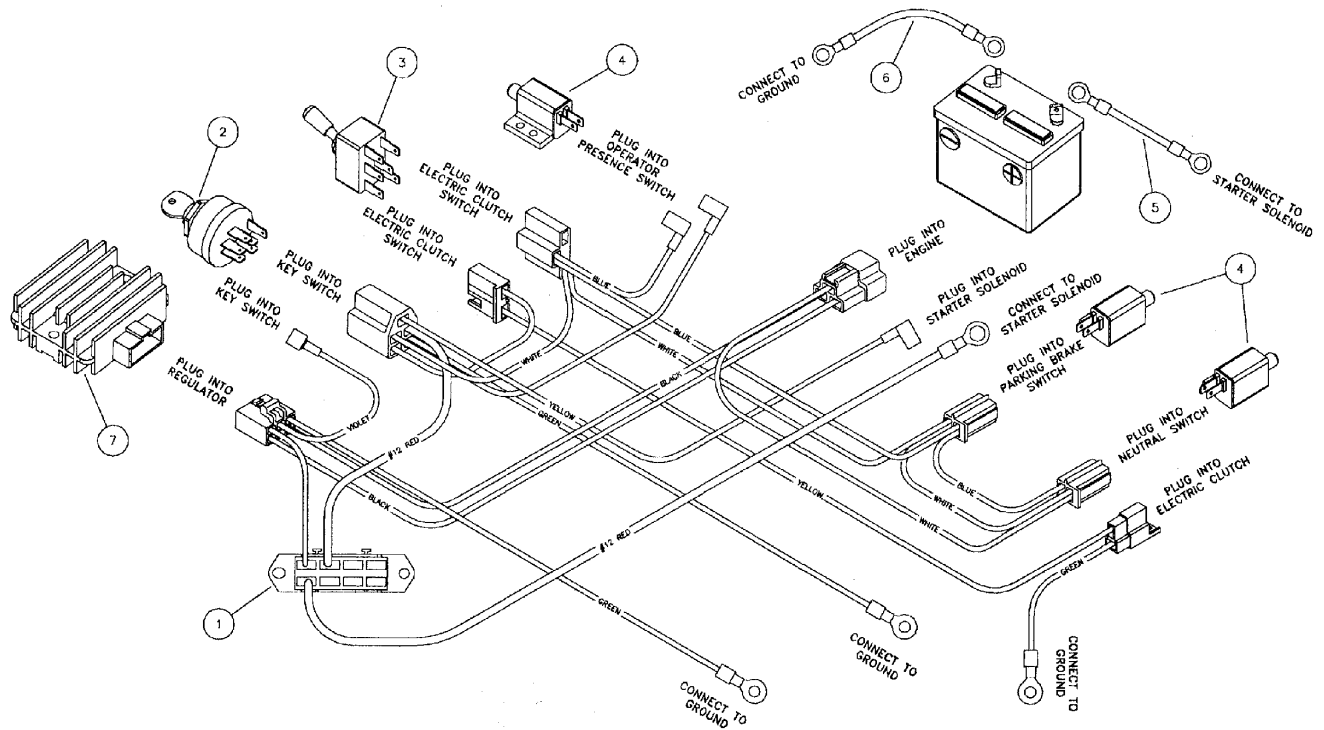
- See your local Kawasaki engine dealer for parts & service.

The above parts group applies to the following Mfg. Nos.:

5901024 (DDSKA)

Electrical Group - 17HP Kawasaki Electric Start

NOTE: Unless noted otherwise,
use the standard hardware torque
specification chart.



The above parts group applies to the following Mfg. Nos.:
DDSKAE

Electrical Group - 17HP Kawasaki Electric Start

REF NO.	PART NO.	QTY.	DESCRIPTION
1	5031036		DDSKAE WIRING HARNESS
2	5020927		SWITCH, Ignition, Complete
3	5021545		SWITCH, Electric Clutch
4	5021769		SWITCH, Plunger, NC
5	5021542		POSITIVE (+) BATTERY CABLE, 30"
6	5021406		NEGATIVE (-) BATTERY CABLE, 22"
7	-		REGULATOR, Kawasaki #21066-2070 (17HP)

Footnotes

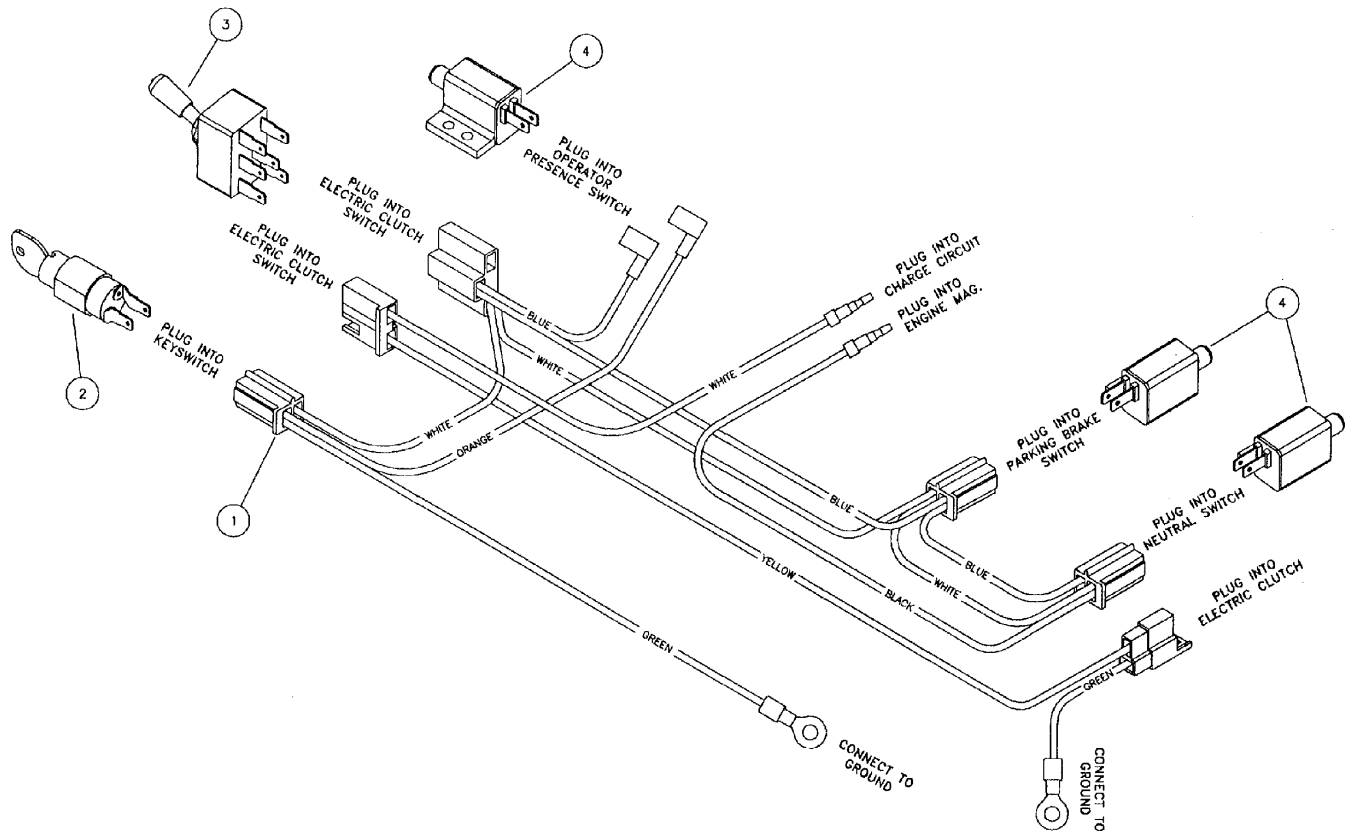
- See your local Kawasaki engine dealer for parts & service.

The above parts group applies to the following Mfg. Nos.:

DDSKAE

Electrical Group - 15HP & 17HP Kawasaki V-Twin Manual Start

NOTE: Unless noted otherwise,
use the standard hardware torque
specification chart.



The above parts group applies to the following Mfg. Nos.:

5900076 (DDSKAV15)

5900078 (DDSKAV17)

Electrical Group - 15HP & 17HP Kawasaki V-Twin Manual Start

REF NO.	PART NO.	QTY.	DESCRIPTION
1	5031091		DDSKAV Wire Harness (S/N: 2887 & below)
1	5031158		DDSKAV Wire Harness (S/N: 2888 & above)
2	5021842		SWITCH, Ignition, Complete
3	5021545		SWITCH, Electric Clutch (S/N: 2887 & below)
3	5022180		SWITCH, PTO (S/N: 2888 & above)
4	5021769		SWITCH, Plunger, NC

Footnotes

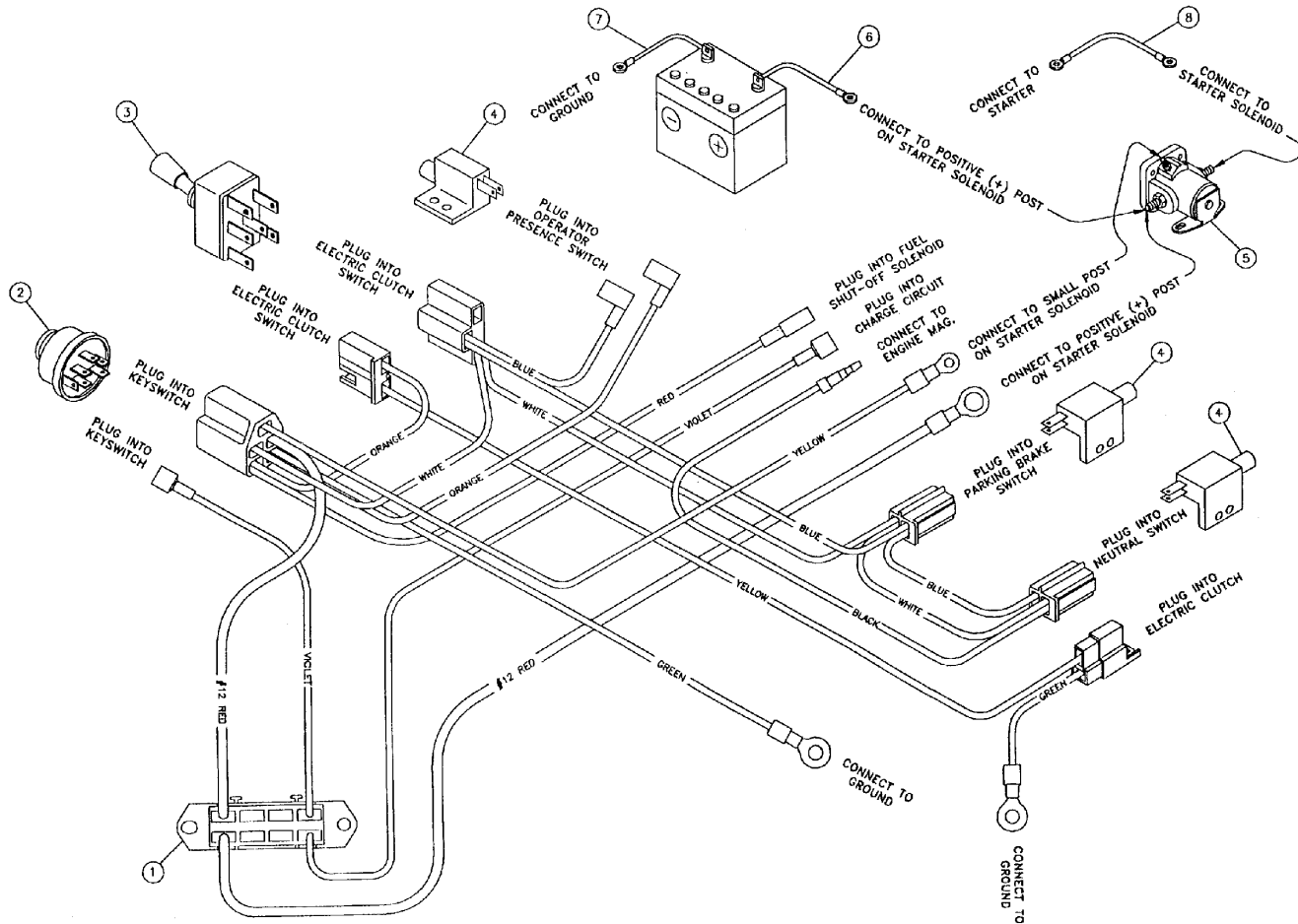
The above parts group applies to the following Mfg. Nos.:

5900076 (DDSKAV15)

5900078 (DDSKAV17)

Electrical Group - 23HP Kawasaki V-Twin Electric Start

NOTE: Unless noted otherwise, use the standard hardware torque specification chart.



The above parts group applies to the following Mfg. Nos.:

5900080 (S/N: 1123 - 3584) (DDSKAV23)

5900080 (S/N: 3585 & above) (DDSKAV23)

Electrical Group - 23HP Kawasaki V-Twin Electric Start

REF NO.	PART NO.	QTY.	DESCRIPTION
1	5031147		DDSKAV23 Wire Harness (S/N: 2887 & below)
1	5031157		DDSKAV23 Wire Harness (S/N: 2888 & above)
2	5020927		SWITCH, Ignition, Complete
3	5021545		SWITCH, Electric Clutch (S/N: 2887 & below)
3	5022180		SWITCH, PTO (S/N: 2888 & above)
4	5021769		SWITCH, Plunger, NC
5	5020801		SOLENOID, Starter
6	5021542		POSITIVE (+) BATTERY CABLE, 30"
7	5021406		NEGATIVE (-) BATTERY CABLE, 22"
8	5021405		POSITIVE (+) BATTERY CABLE, 22"

Footnotes

The above parts group applies to the following Mfg. Nos.:

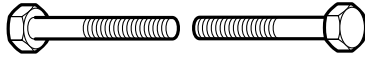
5900080 (S/N: 1123 - 3584) (DDSKAV23)

5900080 (S/N: 3585 & above) (DDSKAV23)

Hardware Identification & Torque Specifications

Common Hardware Types

Hex Head Capscrew



Washer



Carriage Bolt



Lockwasher



Hex Nut

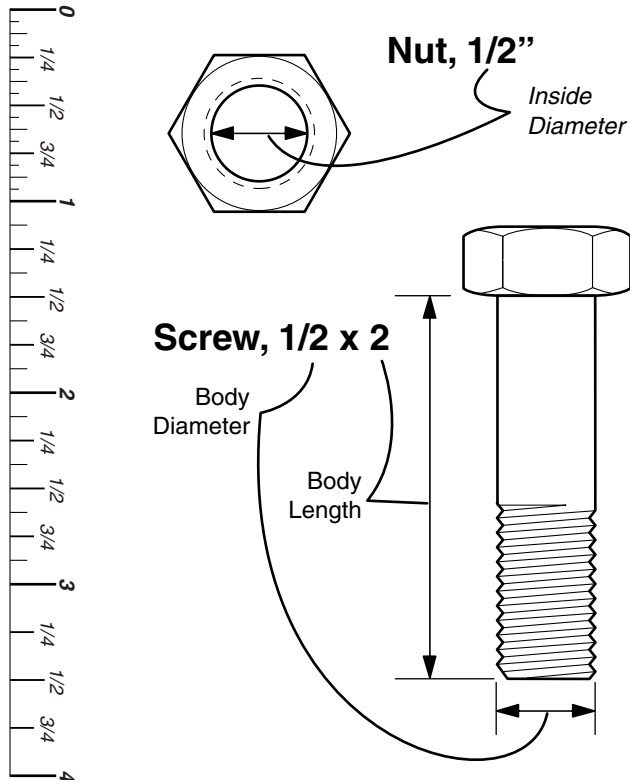


Standard Hardware Sizing

When a washer or nut is identified as $1/2''$, this is the *Nominal size*, meaning the *inside diameter* is $1/2$ inch; if a second number is present it represents the *threads per inch*

When bolt or capscrew is identified as $1/2 - 16 \times 2''$, this means the *Nominal size*, or *body diameter* is $1/2$ inch; the second number represents the *threads per inch* (16 in this example, and the final number is the *body length* of the bolt or screw (in this example 2 inches long).

The guides and ruler furnished below are designed to help you select the appropriate hardware and tools.



Torque Specification Chart

FOR STANDARD MACHINE HARDWARE (Tolerance $\pm 20\%$)

Hardware Grade	No Marks SAE Grade 2		SAE Grade 5		SAE Grade 8	
	in/lbs ft/lbs	Nm.	in/lbs ft/lbs	Nm.	in/lbs ft/lbs	Nm.
8-32	19	2.1	30	3.4	41	4.6
8-36	20	2.3	31	3.5	43	4.9
10-24	27	3.1	43	4.9	60	6.8
10-32	31	3.5	49	5.5	68	7.7
1/4-20	66	7.6	8	10.9	12	16.3
1/4-28	76	8.6	10	13.6	14	19.0
5/16-18	11	15.0	17	23.1	25	34.0
5/16-24	12	16.3	19	25.8	27	34.0
3/8-16	20	27.2	30	40.8	45	61.2
3/8-24	23	31.3	35	47.6	50	68.0
7/16-14	30	40.8	50	68.0	70	95.2
7/16-20	35	47.6	55	74.8	80	108.8
1/2-13	50	68.0	75	102.0	110	149.6
1/2-20	55	74.8	90	122.4	120	163.2
9/16-12	65	88.4	110	149.6	150	204.0
9/16-18	75	102.0	120	163.2	170	231.2
5/8-11	90	122.4	150	204.0	220	299.2
5/8-18	100	136	180	244.8	240	326.4
3/4-10	160	217.6	260	353.6	386	525.0
3/4-16	180	244.8	300	408.0	420	571.2
7/8-9	140	190.4	400	544.0	600	816.0
7/8-14	155	210.8	440	598.4	660	897.6
1-8	220	299.2	580	788.8	900	1,244.0
1-12	240	326.4	640	870.4	1,000	1,360.0

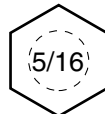
NOTES

- These torque values are to be used for all hardware excluding: locknuts, self-tapping screws, thread forming screws, sheet metal screws and socket head setscrews.
- Recommended seating torque values for locknuts:
 - for prevailing torque locknuts - use 65% of grade 5 torques.
 - for flange whizlock nuts and screws - use 135% of grade 5 torques.
- Unless otherwise noted on assembly drawings, all torque values must meet this specification.

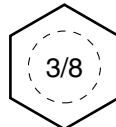
Wrench & Fastener Size Guide



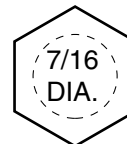
$1/4''$ Bolt or Nut
Wrench— $7/16''$



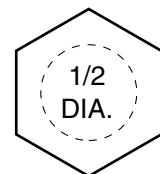
$5/16''$ Bolt or Nut
Wrench— $1/2''$



$3/8''$ Bolt or Nut
Wrench— $9/16''$



$7/16''$ Bolt or Nut
Wrench (Bolt)— $5/8''$
Wrench (Nut)— $11/16''$



$1/2''$ Bolt or Nut
Wrench— $3/4''$

Parts Manual Hydro Walk DD

Walk Behind Mower

Serial No.: 1233 & Above

IT IS THE POLICY OF FERRIS INDUSTRIES TO IMPROVE ITS PRODUCTS WHENEVER IT IS POSSIBLE AND PRACTICAL TO DO SO. WE RESERVE THE RIGHT TO MAKE CHANGES OR ADD IMPROVEMENTS AT ANY TIME WITHOUT INCURRING ANY OBLIGATION TO MAKE SUCH CHANGES ON PRODUCTS MANUFACTURED

Briggs and Stratton Yard Power Products Group

5375 North Main Street
Munnsville, NY 13409 USA
800-933-6175

www.ferrisindustries.com

© Copyright 2007 Briggs and Stratton Corporation
All Rights Reserved. Printed In USA.