



Parts Manual IS500Z Series Zero-Turn Riding Mower



| Models: | Description: |
|----------------|--|
| 5900640 | 24HP Briggs & Stratton w/ 44" Mower Deck (IS500ZBV2444) |
| 5900729 | 24HP Briggs & Stratton w/44" Mower Deck AUS/NZ (IS500ZBV2444 AUS/NZ) |
| 5900704 | 26HP Briggs & Stratton w/ 52" Mower Deck (IS500ZBV2652) |
| 5900730 | 26HP Briggs & Stratton w/52" Mower Deck AUS/NZ (IS500ZBV2652 AUS/NZ) |

Briggs and Stratton Yard Power Products Group

5375 North Main Street
Munnsville, NY 13409 USA
800-933-6175

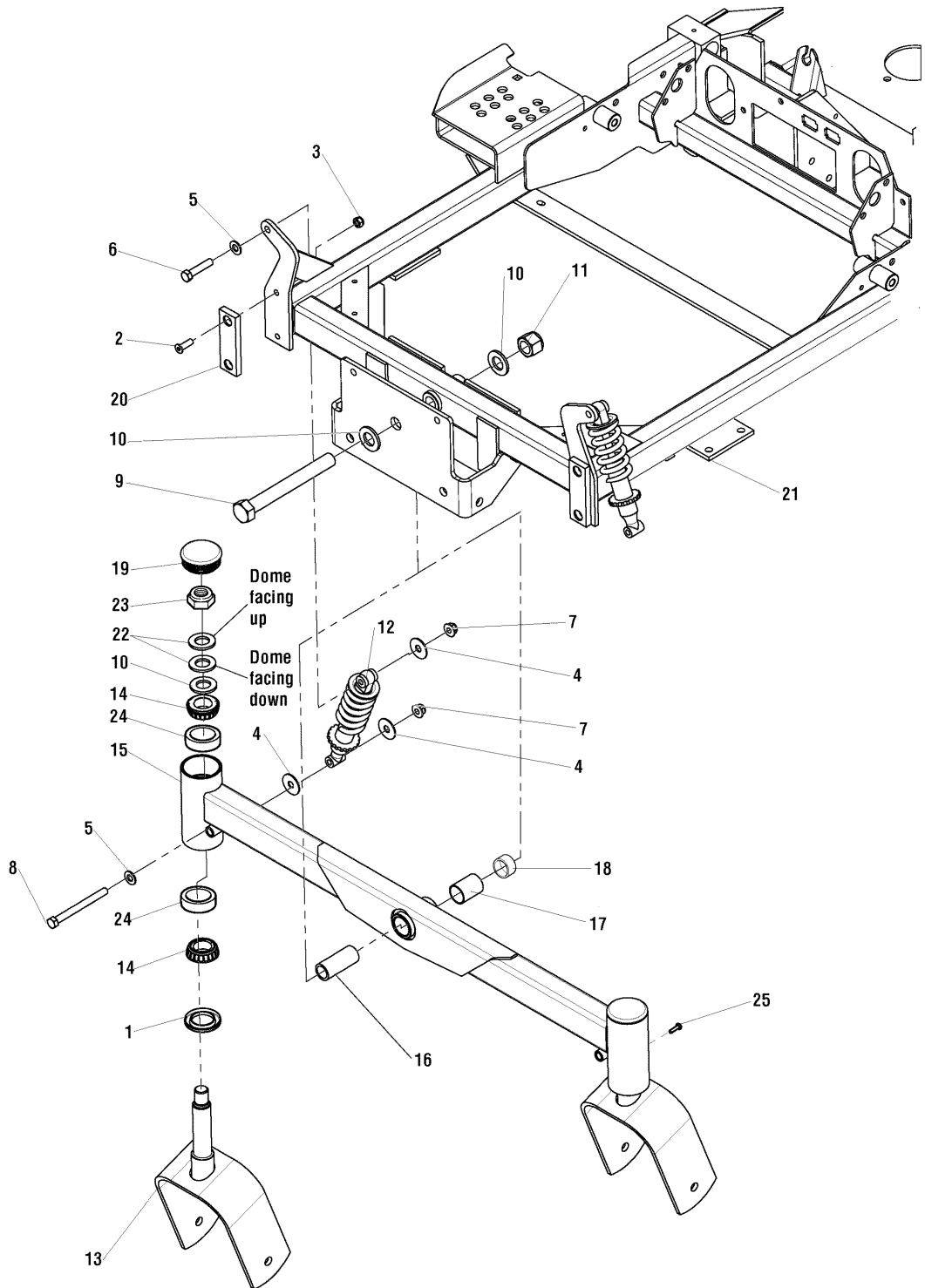
5100902
Revision N
Rev. Date: 10/2007
TP 400-7319-N-50-F

| MODEL COMPONENTS | PAGE |
|---|--------------------------|
| Main Frame & Front Suspension Group | 4 |
| Rear Bumper & ROPS Group | 6 |
| Seat Mount & Floor Group (S/N: 2012600079 & Below) | 8 |
| Seat Mount & Floor Group (S/N: 2012600080 & Above) | 10 |
| Fuel Tank & Mount Group | 12 |
| Instrument & Control Panel Group | 14 |
| Engine & PTO Group - 24HP & 26HP Briggs & Stratton | 16 |
| Pump Drive Group | 18 |
| Motion Control Group | 20 |
| Hydraulic Mount Group | 24 |
| Hydraulic Group | 26 |
| Parking Brake Group | 28 |
| Rear Suspension Group | 30 |
| Deck Lift Group | 32 |
| Wheel & Tire Group | 36 |
| Decals - Brand & Model | 38 |
| Decals - Safety & Operation | 40 |
| 52" Mower Deck - Rollers & Casters | 42 |
| 44" & 52" Mower Deck Group - Hanger Chains | 44 |
| 44" Mower Deck Group - Pulleys, Belts & Idler Arm | 46 |
| 44" & 52" Mower Deck Group - Housing, Covers, Spindles & Blades | 48 |
| 44" Mower Deck Group - Rollers and Casters | 50 |
| 52" Mower Deck - Pulleys, Belt & Idler Arm | 52 |
| Spindle Service Parts | 54 |
| Electrical Schematics | 56-59 |
| Torque Specification Chart | Inside Back Cover |

Main Frame & Front Suspension Group

NOTE: Unless noted otherwise,
use the standard hardware torque
specification chart.

5300777



The above parts group applies to the following Mfg. Nos.:

- 5900704 (IS500ZBV2652)
- 5900729 (IS500ZBV2444 AUS/NZ)
- 5900730 (IS500ZBV2652 AUS/NZ)
- 5900640 (IS500ZBV2444)

Main Frame & Front Suspension Group

| REF NO | PART NO. | QTY. | DESCRIPTION |
|---------------|-----------------|-------------|--|
| 1 | 5021072 | 2 | SEAL, GREASE |
| 2 | 5025303 | 4 | SCREW, 5/16-18 X 1 FLAT HD SC |
| 3 | 5025057 | 4 | NUT, 5/16-18 HEX NYLON LOCK |
| 4 | 5025165 | 6 | WASHER, 3/8" FENDER |
| 5 | 5025156 | 4 | WASHER, 3/8" SAE |
| 6 | 5025013X14 | 1 | BOLT, 3/8-16 X 1-3/4" GD5 |
| 7 | 5025394 | 4 | NUT, 3/8-16 HEX NYLOCK FLANGE |
| 8 | 5025013X32 | 1 | BOLT, 3/8-16 X 4" GD5 |
| 9 | 5025265X52 | 1 | BOLT, 3/4-16 X 6-1/2" YZ GD5 |
| 10 | 5025160 | 4 | WASHER, 3/4" SAE |
| 11 | 5025284 | 1 | NUT, 3/4-16 HEX NYLON LOCK |
| 12 | 5023483 | 2 | SHOCK, SPRING ASSEMBLY |
| 13 | 5402539B | 2 | WELD, CASTER YOKE, IS500Z - RED |
| 14 | 5020884 | 4 | BEARING, TAPERED ROLLER, 1" |
| 15 | 5402536B | 1 | WELD, FRONT PIVOT, IS500Z - RED |
| 16 | 5047489 | 1 | SPACER, .75 X 1.00 X 2.38 |
| 17 | 5022852 | 1 | PIVOT BEARING, 1.00" X 1.125" OD X 1.50" |
| 18 | 5100358 | 1 | PIVOT BEARING, 1.00" X 1.125" OD X .50" |
| 19 | 5100882 | 2 | CAP, CASTER SPINDLE, LOW PROFILE |
| 20 | 5100930 | 2 | PAD, FRICTION, .375 X 1.25 X 4.00 |
| 21 | 5402453B | 1 | WELD, IS500 MAIN FRAME - RED |
| 22 | 5025449 | 4 | WASHER, BELLEVILLE |
| 23 | 5025448 | 2 | NUT, 3/4-16, HEX JAM NYLON LOCK |
| 24 | 5020883 | 4 | BEARING CUP |
| 25 | 5025457 | 2 | BOLT, 1/4-28 X 1/2" GD5 YZ |

Footnotes

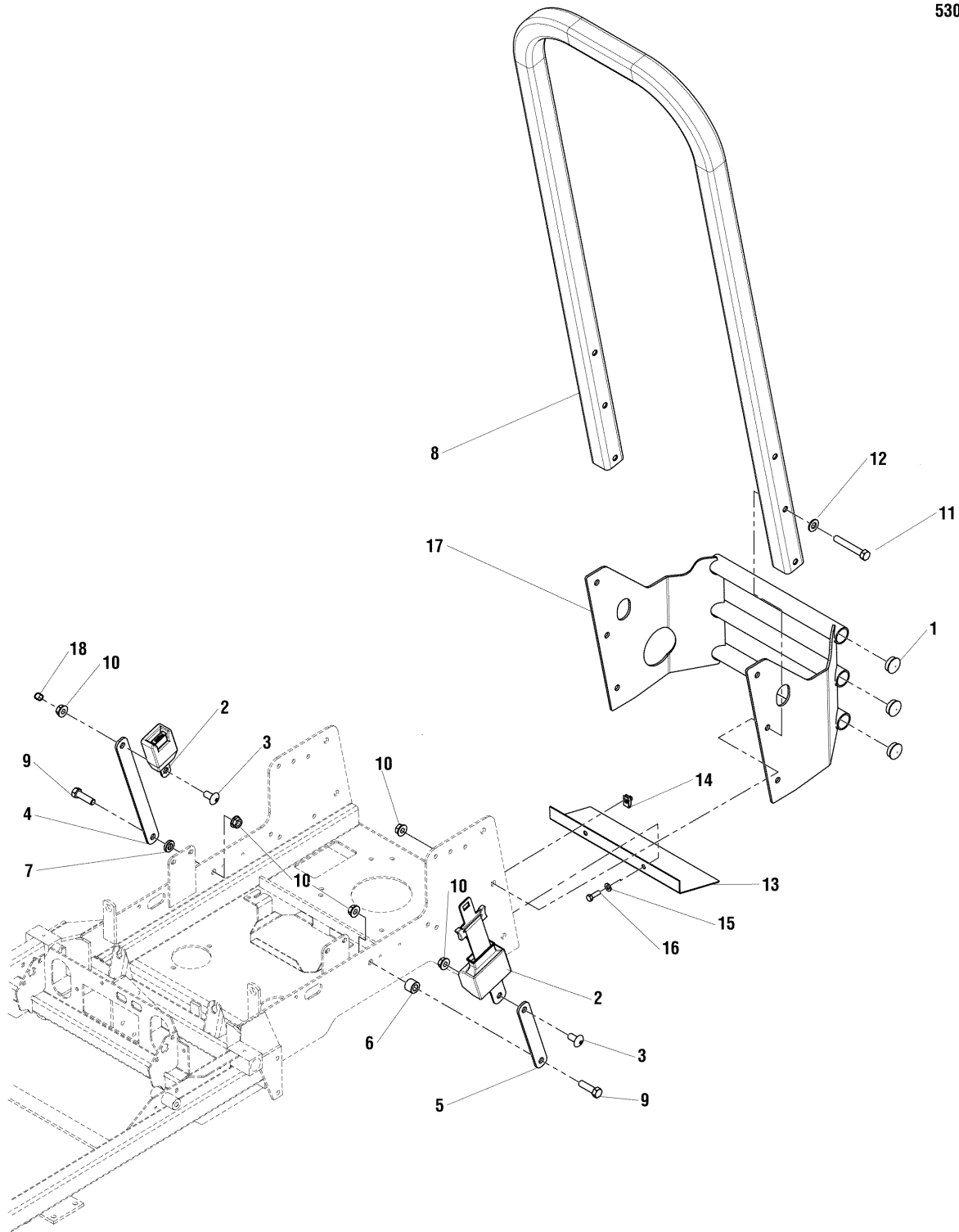
The above parts group applies to the following Mfg. Nos.:

5900704 (IS500ZBV2652)
5900729 (IS500ZBV2444 AUS/NZ)
5900730 (IS500ZBV2652 AUS/NZ)
5900640 (IS500ZBV2444)

Rear Bumper & ROPS Group

NOTE: Unless noted otherwise,
use the standard hardware torque
specification chart.

5300778



The above parts group applies to the following Mfg. Nos.:

5900704 (IS500ZBV2652)
5900729 (IS500ZBV2444 AUS/NZ)
5900730 (IS500ZBV2652 AUS/NZ)
5900640 (IS500ZBV2444)

Rear Bumper & ROPS Group

| REF NO | PART NO. | QTY. | DESCRIPTION |
|--------|------------|------|---------------------------------------|
| 1 | 5023484 | 6 | PLUG, PANEL, 1.25 - BLACK |
| 2 | 5100139 | 1 | SEAT BELT, RETRACTING - ASSM |
| 3 | 5100267 | 2 | SCREW, 1/2-13 X 1.00, SHCS |
| 4 | 5400847B | 1 | MOUNT, SEAT BELT - RH - RED |
| 5 | 5400844B | 1 | PLATE, SEAT BELT ANCHOR - LH - RED |
| 6 | 5045178 | 1 | SPACER, .52 X 1.00 X .75 |
| 7 | 5100520 | 1 | SPACER, .515 X 1.00 X .218 |
| 8 | 5100933 | 1 | ROPS, IS500Z |
| 9 | 5100268 | 2 | BOLT, 1/2-13 X 1-3/4", HHCS GD5 |
| 10 | 5025396 | 10 | NUT, 1/2-13 HEX NYLOCK FLANGE |
| 11 | 5025017X26 | 6 | BOLT, 1/2-13 X 3-1/4, HEX HD, GD5, YZ |
| 12 | 5025158 | 6 | WASHER, 1/2" SAE |
| 13 | 5402618B | 1 | PLATE, HEAT SHIELD - IS500Z - RED |
| 14 | 5022308 | 2 | BODY CLIP, 5/16-18 X 1/2" DEEP |
| 15 | 5025155 | 2 | WASHER, 5/16" SAE |
| 16 | 5025011X8 | 2 | BOLT, 5/16-18 X 1" GD5 YZ |
| 17 | 5402547B | 1 | WELD, BUMPER - IS500Z - RED |
| 18 | 5101049 | 1 | CAP, VINYL |

Footnotes

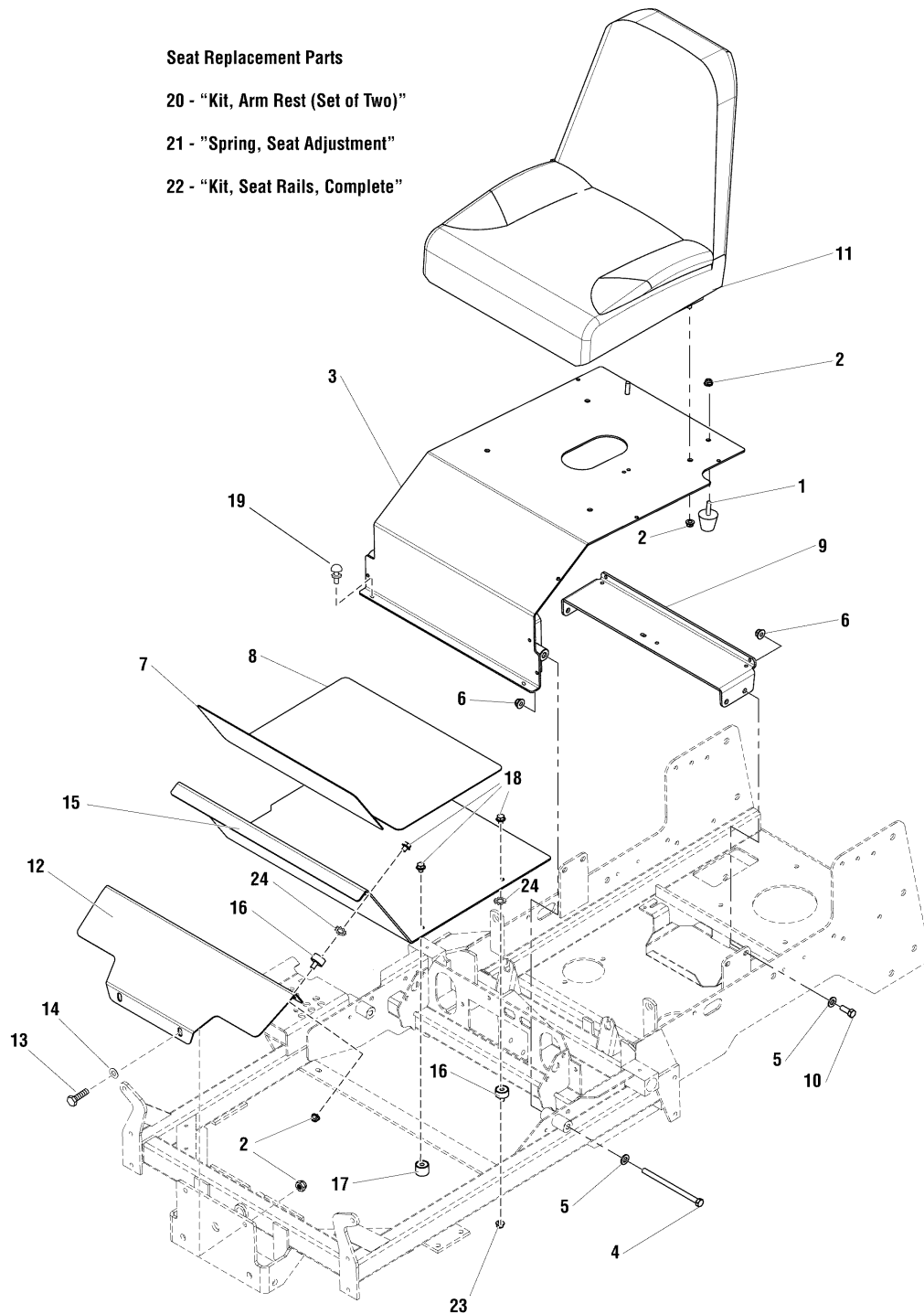
The above parts group applies to the following Mfg. Nos.:

5900704 (IS500ZBV2652)
5900729 (IS500ZBV2444 AUS/NZ)
5900730 (IS500ZBV2652 AUS/NZ)
5900640 (IS500ZBV2444)

Seat Mount & Floor Group (S/N: 2012600079 & Below)

NOTE: Unless noted otherwise,
use the standard hardware torque
specification chart.

5300802



The above parts group applies to the following Mfg. Nos.:
5900640 (IS500ZBV2444)

Seat Mount & Floor Group (S/N: 2012600079 & Below)

| REF NO | PART NO. | QTY. | DESCRIPTION |
|--------|------------|------|--------------------------------------|
| 1 | 5022612 | 2 | BUMPER, RUBBER 5/16-18 |
| 2 | 5025392 | 10 | NUT, 5/16-18 HEX NYLOCK FLANGE |
| 3 | 5402568B | 1 | WELD, SEAT PLATE - RED |
| 4 | 5025013X48 | 2 | BOLT, 3/8-16 X 6" GD5 YZ |
| 5 | 5025156 | 6 | WASHER, 3/8" SAE |
| 6 | 5025394 | 6 | NUT, 3/8-16 HEX NYLOCK FLANGE |
| 7 | 5101007 | 1 | SAFETY WALK, 17.38 X 6.00 |
| 8 | 5100999 | 1 | SAFETY WALK, 11.50 X 17.38 |
| 9 | 5402688B | 1 | PLATE, SEAT SUPPORT - RED |
| 10 | 5025013X8 | 4 | BOLT, 3/8-16 X 1" GD5 YZ |
| 11 | 5100909 | 1 | SEAT, NO ARM REST |
| 12 | 5402692B | 1 | PLATE, FLOOR PAN, FRONT - IS500Z |
| 13 | 5025011X8 | 2 | BOLT, 5/16-18 X 1" GD5 YZ |
| 14 | 5025292 | 2 | WASHER, 5/16" GD.9 FLAT |
| 15 | 5402693B | 1 | PLATE, FLOOR PAN, REAR - IS500Z |
| 16 | 5100586 | 4 | ISO MOUNT |
| 17 | 5100998 | 2 | ISO MOUNT,5/16-18, 3/4 - THK X 1.50 |
| 18 | 5025473 | 6 | BOLT, 5/16-18 X 3/8, FLANGE SERRATED |
| 19 | 5100383 | 2 | BUMPER, ROPS |
| 20 | 1686907 | 1 | KIT, ARM REST (SET OF TWO) |
| 21 | 5100636 | 1 | SPRING, SEAT ADJUSTMENT |
| 22 | 5061599X1 | 1 | KIT, SEAT RAILS (COMPLETE) |
| 23 | 5025127 | 2 | NUT, 5/16-18 HEX NYLOCK FLANGE SMALL |
| 24 | 5025188 | 4 | WASHER, 5/16" INT TOOTH LOCK |

Footnotes

The above parts group applies to the following Mfg. Nos.:

5900640 (IS500ZBV2444)

Seat Mount & Floor Group (S/N: 2012600080 & Above)

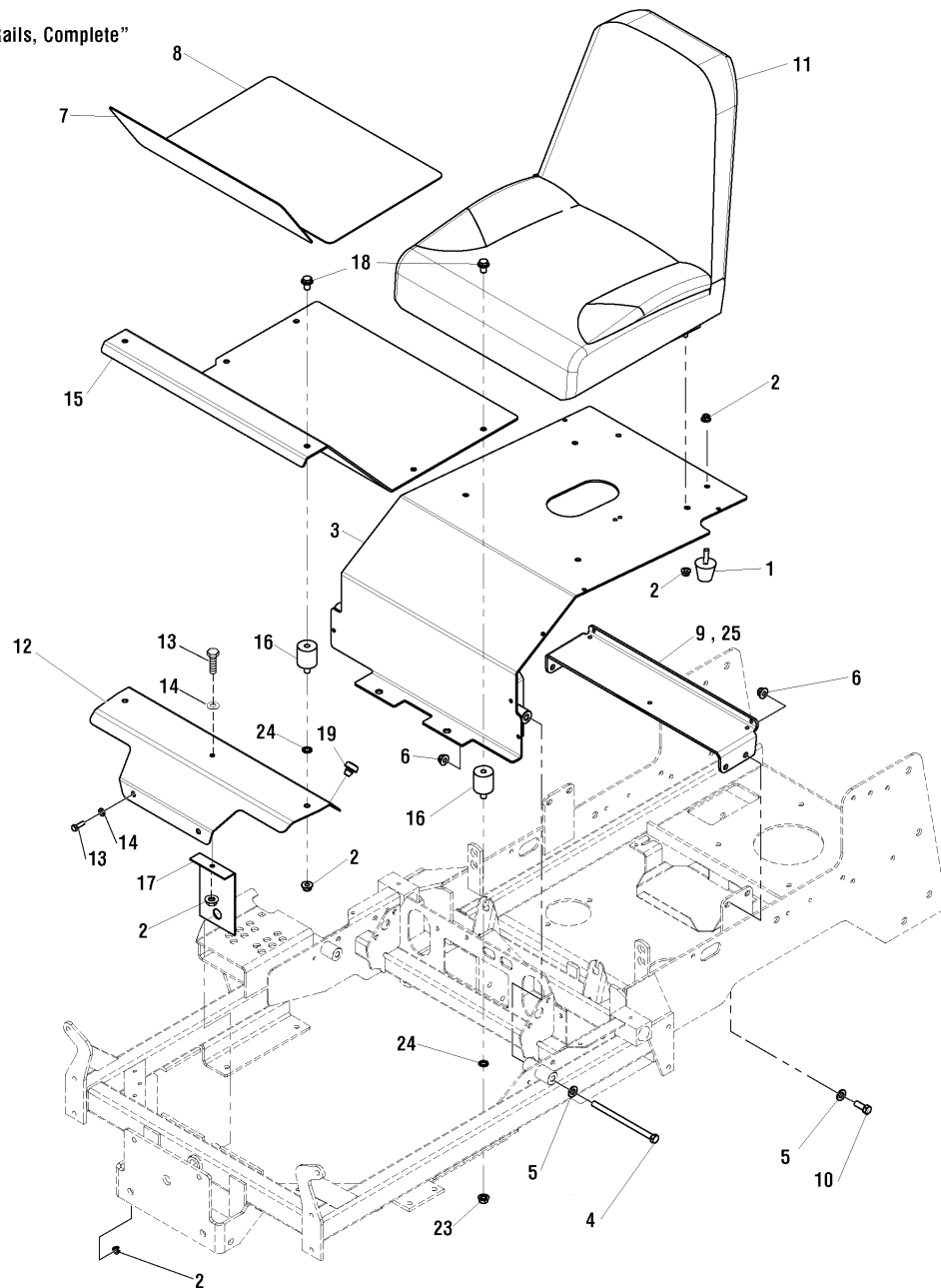
NOTE: Unless noted otherwise,
use the standard hardware torque
specification chart.

Seat Replacement Parts

20 - "Kit, Arm Rest (Set of Two)"

21 - "Spring, Seat Adjustment"

22 - "Kit, Seat Rails, Complete"



The above parts group applies to the following Mfg. Nos.:

5900704 (IS500ZBV2652)
5900729 (IS500ZBV2444 AUS/NZ)
5900730 (IS500ZBV2652 AUS/NZ)
5900640 (IS500ZBV2444)

Seat Mount & Floor Group (S/N: 2012600080 & Above)

| REF NO | PART NO. | QTY. | DESCRIPTION |
|---------------|-----------------|-------------|--|
| 1 | 5022612 | 2 | BUMPER, RUBBER 5/16-18 |
| 2 | 5025392 | 9 | NUT, 5/16-18 HEX NYLOCK FLANGE |
| 3 | 5403392B | 1 | WELD, SEAT PLATE - RED |
| 4 | 5025013X48 | 2 | BOLT, 3/8-16 X 6" GD5 YZ |
| 5 | 5025156 | 6 | WASHER, 3/8" SAE |
| 6 | 5025394 | 8 | NUT, 3/8-16 HEX NYLOCK FLANGE |
| 7 | 5101007 | 1 | SAFETY WALK, 17.17 X 6.00 |
| 8 | 5100999 | 1 | SAFETY WALK, 17.13 X 11.50 |
| 9 | 5402688B | 1 | WELD, SEAT SUPPORT - RED (S/N: 2012635841 & Below) |
| 10 | 5025013X8 | 4 | BOLT, 3/8-16 X 1" GD5 YZ |
| 11 | 5100909 | 1 | SEAT, NO ARM REST |
| 12 | 5403389B | 1 | PLATE, FLOOR PAN, FRONT - IS500Z |
| 13 | 5025011X8 | 2 | BOLT, 5/16-18 X 1" GD5 YZ |
| 14 | 5025292 | 2 | WASHER, 5/16" GD.9 FLAT |
| 15 | 5403390B | 1 | PLATE, FLOOR PAN, REAR - IS500Z |
| 16 | 197546 | 4 | MNT, VBRTN |
| 17 | 5403403B | 1 | PLATE, SUPPORT, FRONT FLOOR |
| 18 | 5025481 | 6 | BOLT, 5/16-18 X 5/8, FLANGE SERRATED |
| 19 | 5100383 | 2 | BUMPER, ROPS |
| 20 | 1686907 | 1 | KIT, ARM REST (SET OF TWO) |
| 21 | 5100636 | 1 | SPRING, SEAT ADJUSTMENT |
| 22 | 5061599X1 | 1 | KIT, SEAT RAILS (COMPLETE) |
| 23 | 5025127 | 2 | NUT, 5/16-18 HEX NYLOCK FLANGE SMALL |
| 24 | 5025480 | 6 | WASHER, 3/8" INT TOOTH LOCK |
| 25 | 5403754B | 1 | PLATE, SEAT SUPPORT (S/N: 2012635842 & Above) |

Footnotes

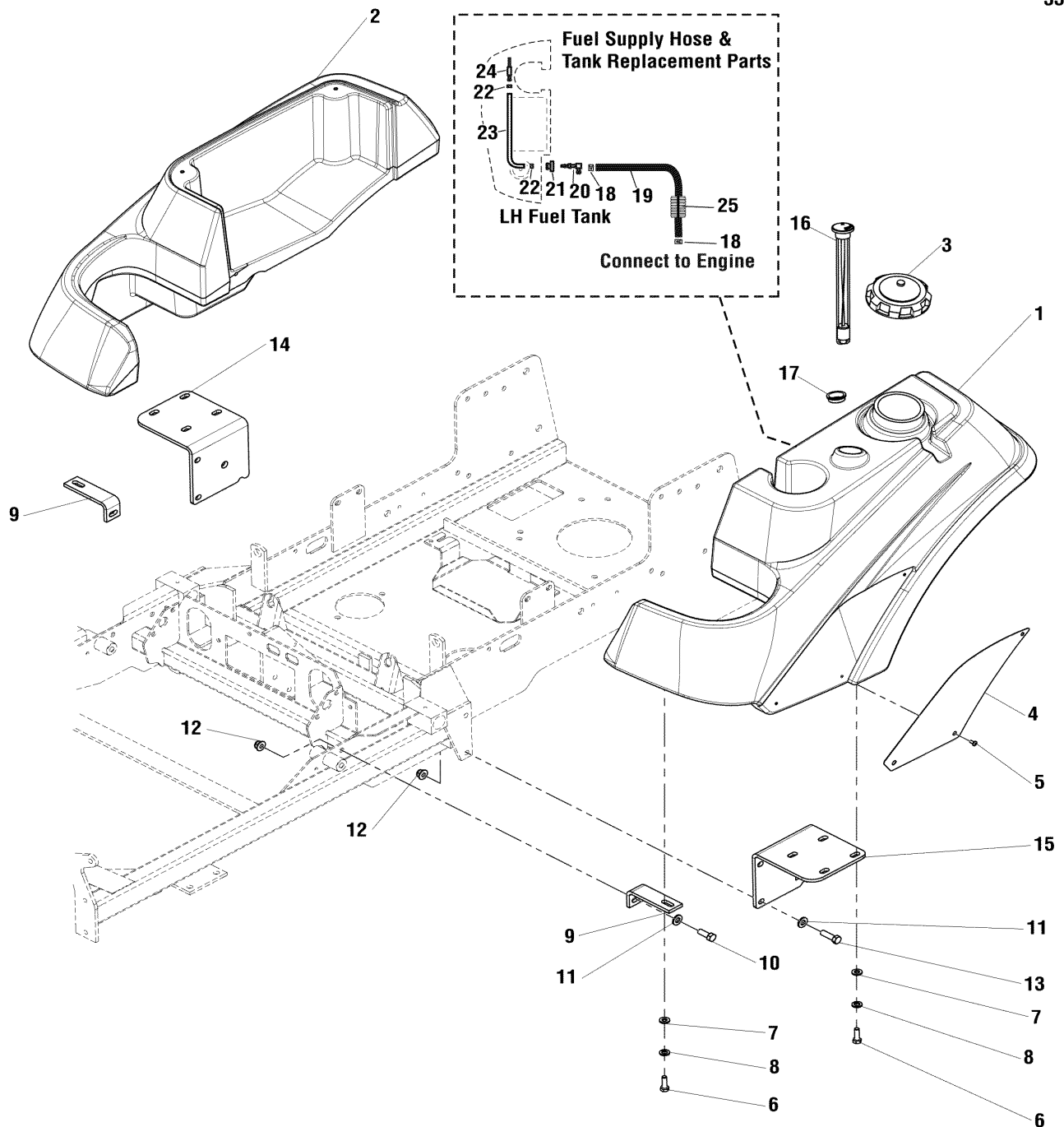
The above parts group applies to the following Mfg. Nos.:

5900704 (IS500ZBV2652)
5900729 (IS500ZBV2444 AUS/NZ)
5900730 (IS500ZBV2652 AUS/NZ)
5900640 (IS500ZBV2444)

Fuel Tank & Mount Group

NOTE: Unless noted otherwise,
use the standard hardware torque
specification chart.

5300832



The above parts group applies to the following Mfg. Nos.:

5900704 (IS500ZBV2652)
5900729 (IS500ZBV2444 AUS/NZ)
5900730 (IS500ZBV2652 AUS/NZ)
5900640 (IS500ZBV2444)

Fuel Tank & Mount Group

| REF NO | PART NO. | QTY. | DESCRIPTION |
|--------|------------|------|--|
| 1 | 5049947 | 1 | TANK, FUEL, 1500Z - LH |
| 2 | 5049948 | 1 | TANK, FUEL, 1500Z - RH |
| 3 | 5022158 | 1 | CAP, FUEL TANK, 3-1/2" NECK |
| 4 | 5400250B | 2 | BADGE, IS1500Z, RED |
| 5 | 5025386 | 6 | SCREW, #10-24 X 3/8" ALLEN BHBZ |
| 6 | 5025011X8 | 10 | BOLT, 5/16-18 X 1" GD5 YZ |
| 7 | 5025292 | 10 | WASHER, 5/16" GD.9 FLAT |
| 8 | 5025170 | 10 | WASHER, 5/16" LOCK |
| 9 | 5400012B | 2 | MOUNT, TANK, FRONT |
| 10 | 5025013X8 | 2 | BOLT, 3/8-16 X 1" GD5 YZ |
| 11 | 5025293 | 6 | WASHER, 3/8" GD.9 FLAT |
| 12 | 5025394 | 6 | NUT, 3/8-16 HEX NYLOCK FLANGE |
| 13 | 5025013X10 | 4 | BOLT, 3/8-16 X 1-1/4" GD5 |
| 14 | 5402557B | 1 | WELD, TANK MOUNT-RH-IS500Z - RED |
| 15 | 5402556B | 1 | WELD, TANK MOUNT-LH-IS500Z - RED |
| 16 | 5022917 | 1 | GAUGE, FUEL 12" |
| 17 | 5022917X1 | 1 | GROMMET, FUEL GAUGE |
| 18 | 5020835 | 2 | CLAMP, HOSE EXTERNAL, 1/2 - RED |
| 19 | 5050831X27 | 1 | HOSE, 1/4" FUEL, 27.00" |
| 20 | - | 1 | SEE REF # 23 |
| 21 | - | 1 | SEE REF # 23 |
| 22 | - | 2 | SEE REF # 23 |
| 23 | 5101149 | 1 | HOSE ASSEMBLY |
| 24 | - | 1 | SEE REF # 23 |
| 25 | 5050833X25 | 1 | WIRE LOOM, 1/2 ID, 25.00 LONG |
| 26 | 5050833X9 | 1 | WIRE LOOM, 1/2 ID, 9.00 LONG (Not Shown - Between Filter and Engine) |

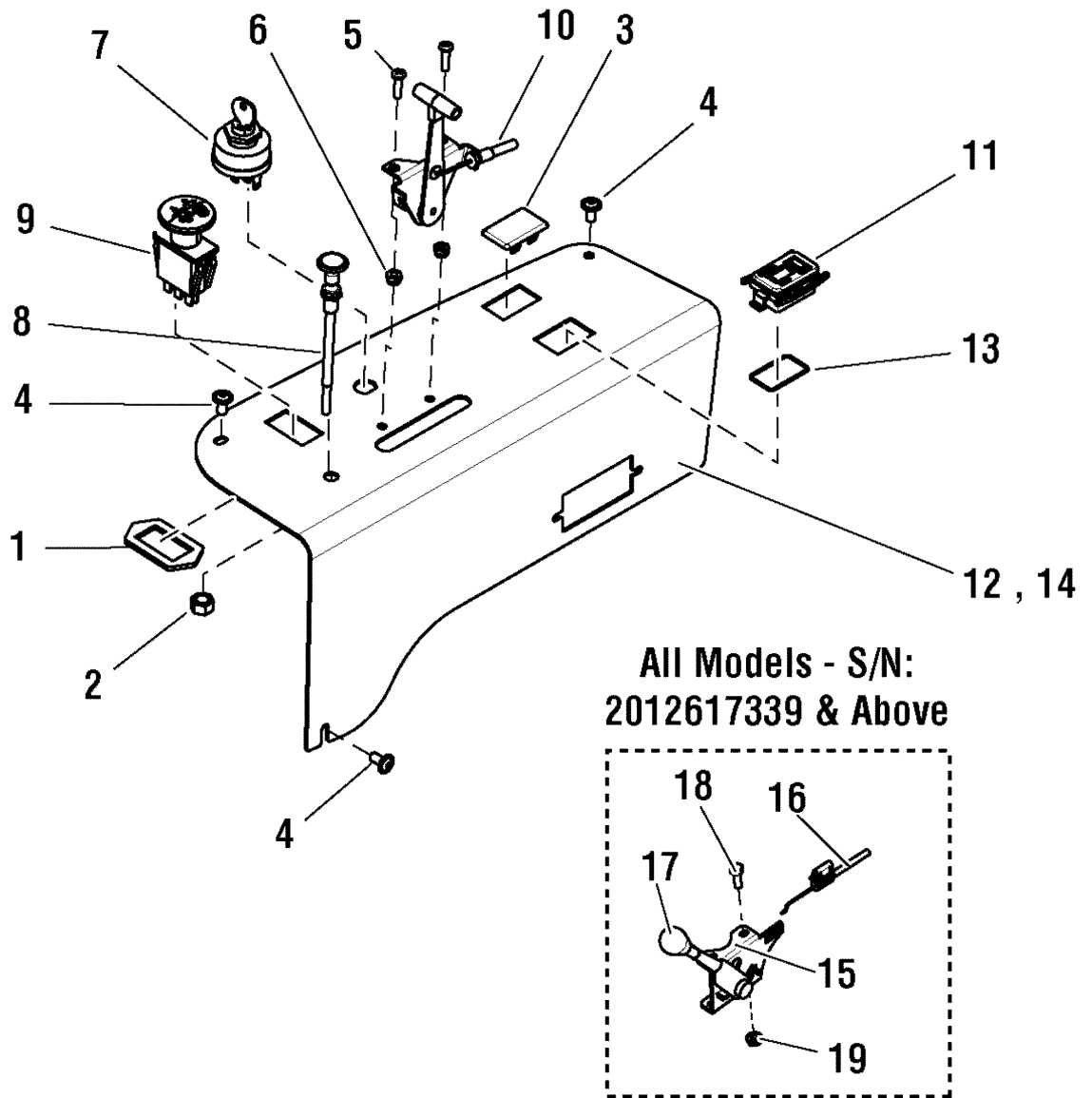
Footnotes

The above parts group applies to the following Mfg. Nos.:

5900704 (IS500ZBV2652)
5900729 (IS500ZBV2444 AUS/NZ)
5900730 (IS500ZBV2652 AUS/NZ)
5900640 (IS500ZBV2444)

Instrument & Control Panel Group

NOTE: Unless noted otherwise,
use the standard hardware torque
specification chart.



The above parts group applies to the following Mfg. Nos.:

5900704 (IS500ZBV2652)
5900729 (IS500ZBV2444 AUS/NZ)
5900730 (IS500ZBV2652 AUS/NZ)
5900640 (IS500ZBV2444)

Instrument & Control Panel Group

| REF NO | PART NO. | QTY. | DESCRIPTION |
|---------------|-----------------|-------------|---|
| 1 | 5022222 | 1 | RING, SWITCH RETAINER |
| 2 | 5025309 | 1 | NUT, 3/8-24 HEX JAM |
| 3 | 1709188 | 1 | PLUG, .820X1.44 HOLE, BLACK PLASTIC |
| 4 | 5025299X4 | 3 | SCREW, 1/4-20 X 1/2" ALLEN BH |
| 5 | 5025010X5 | 2 | BOLT, 1/4-20 X 5/8" GD5 YZ (S/N: 2012617338 & Below) |
| 6 | 5025095 | 2 | NUT, 1/4-20 HEX NYLON LOCK (S/N: 2012617338 & Below) |
| 7 | 5020927 | 1 | SWITCH, IGNITION, 6 POST (See Electrical Group for parts breakdown) |
| 8 | 5047779 | 1 | CABLE, CHOKE CONTROL, 51" (Z) |
| 9 | 5022180 | 1 | SWITCH, BLADE ENGAGEMENT |
| 10 | 5021887 | 1 | CABLE, THROTTLE CONTROL, 45" (S/N: 2012617338 & Below) |
| 11 | 5100996 | 1 | HOUR METER, DIGITAL |
| 12 | 5061361A | 1 | PANEL, CONTROL 1500Z (S/N: 2012617338 & Below) |
| 13 | 5022269 | 1 | O-RING, 7/8" ID X 1/16" W |
| 14 | 5403402A | 1 | PLATE, CONTROL PANEL - BLK (S/N: 2012617339 & Above) |
| 15 | 5101118 | 1 | LEVER, THROTTLE CONTROL (S/N: 2012617339 & Above) |
| 16 | 5101073 | 1 | CABLE, THROTTLE, 42" (S/N: 2012617339 & Above) |
| 17 | 5046360X1 | 1 | KNOB, THROTTLE CONTROL (SV) (S/N: 2012617339 & Above) |
| 18 | 5025179X6 | 2 | SCREW, #10-24 HEX NYLON LOCK (S/N: 2012617339 & Above) |
| 19 | 5025271 | 2 | NUT, #10-24 HEX NYLON LOCK (S/N: 2012617339 & Above) |

Footnotes

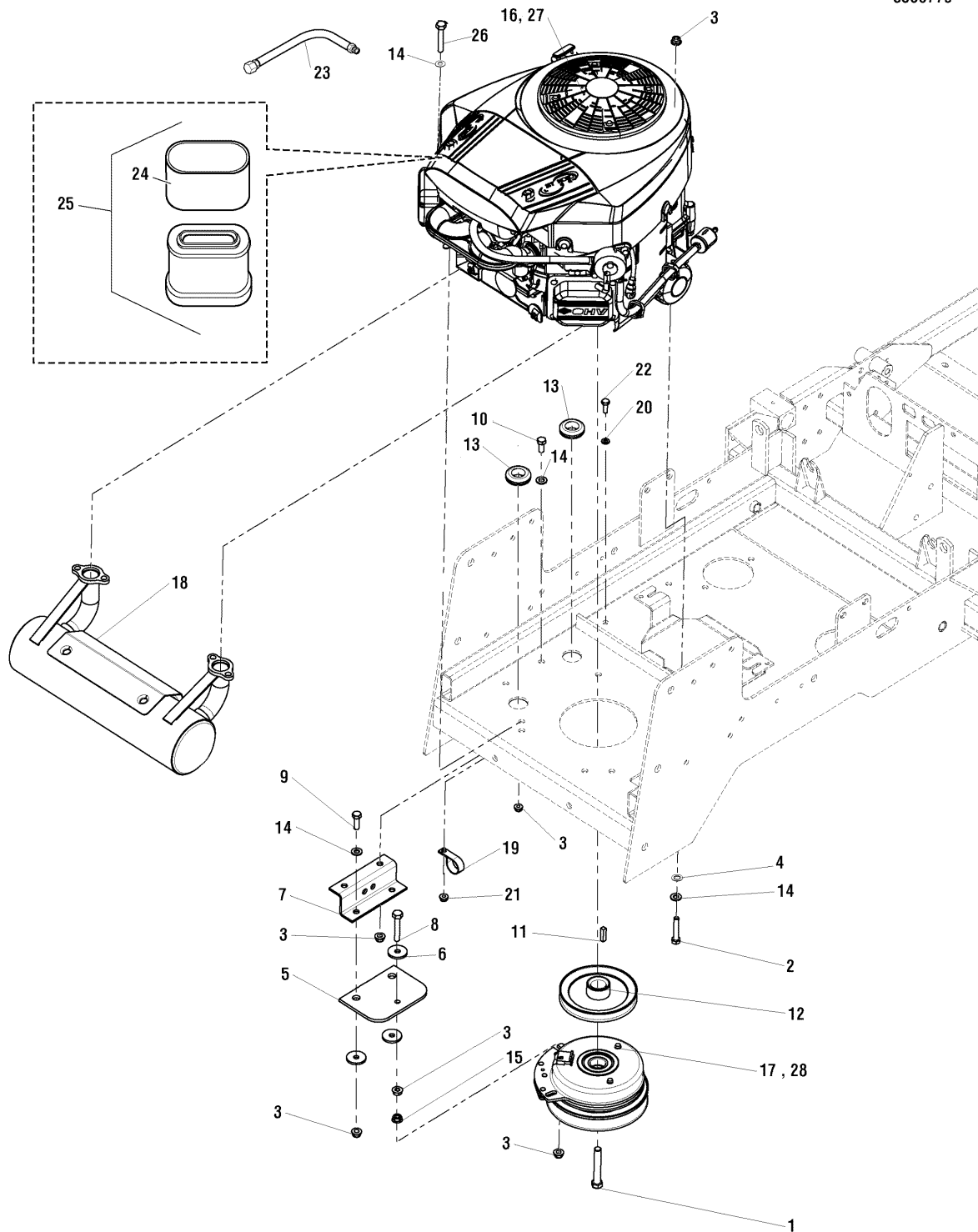
The above parts group applies to the following Mfg. Nos.:

5900704 (IS500ZBV2652)
5900729 (IS500ZBV2444 AUS/NZ)
5900730 (IS500ZBV2652 AUS/NZ)
5900640 (IS500ZBV2444)

Engine & PTO Group - 24HP & 26HP Briggs & Stratton

NOTE: Unless noted otherwise, use the standard hardware torque specification chart.

5300779



The above parts group applies to the following Mfg. Nos.:

- 5900704 (IS500ZBV2652)
- 5900729 (IS500ZBV2444 AUS/NZ)
- 5900730 (IS500ZBV2652 AUS/NZ)
- 5900640 (IS500ZBV2444)

Engine & PTO Group - 24HP & 26HP Briggs & Stratton

| REF NO | PART NO. | QTY. | DESCRIPTION |
|--------|------------|------|--|
| 1 | 5047632 | 1 | BOLT, CRANKSHAFT, 7/16"X2.75 |
| 2 | 5025011X14 | 2 | BOLT, 5/16-18 X 1-3/4" GD5 YZ |
| 3 | 5025392 | 10 | NUT, 5/16-18 HEX NYLOCK FLANGE |
| 4 | 5025188 | 2 | WASHER, 5/16" INT. TOOTH LOCK |
| 5 | 5043636 | 1 | CLUTCH ANCHOR PAD |
| 6 | 5044617 | 3 | WASHER, .34 X 1.25 X 10 GA |
| 7 | 5046416B | 1 | ANCHOR, CLUTCH |
| 8 | 5025055X16 | 1 | BOLT, 5/16-18 X 2" GD5 TFL |
| 9 | 5025011X8 | 2 | BOLT, 5/16-18 X 1" GD5 YZ |
| 10 | 5025011X6 | 2 | BOLT, 5/16-18 X 3/4" GD5 |
| 11 | 5050407X8 | 1 | KEY, 1/4" SQ. X 1.00 |
| 12 | 5100914 | 1 | PULLEY, CRANKSHAFT |
| 13 | 5021379 | 2 | GROMMET, 7/8 |
| 14 | 5025155 | 8 | WASHER, 5/16" SAE |
| 15 | 5025139 | 1 | NUT, 5/16-18 HEX SERRATED FLANGE (LARGE) |
| 16 | - | 1 | ENGINE-24HP B&S, ELS #44M777-0121-E1 (24 HP MODELS ONLY) |
| 17 | 5100915 | 1 | CLUTCH, # 5219-34A, ELECTRIC, IS500Z (24 HP MODELS ONLY) |
| 18 | 5100907 | 1 | MUFFLER, B&S - ELS 22-26HP |
| 19 | 5021500 | 1 | CLAMP, VINYL INSULATED |
| 20 | 5025154 | 1 | WASHER, 1/4" SAE |
| 21 | 5025391 | 1 | NUT, 1/4-20 HEX NYLOCK FLANGE |
| 22 | 5025010X6 | 1 | BOLT, 1/4-20 X 3/4" GD5 YZ |
| 23 | 5048681 | 1 | HOSE, OIL DRAIN |
| 24 | 792303 | 1 | PRE CLEANER |
| 25 | 792105 | 1 | AIR CLEANER W/ PRE CLEANER (Includes Ref. No. 24) |
| 26 | 5025011X14 | 2 | BOLT, 5/16-18 X 1-3/4" GD5 YZ |
| 27 | - | 1 | ENGINE-26HP B&S, ELS #44P777-0120-E1 (26 HP MODELS ONLY) |
| 28 | 7075672 | 1 | CLUTCH, ELECTRICAL, OGURA GT2.5 (26 HP MODELS ONLY) |

Footnotes

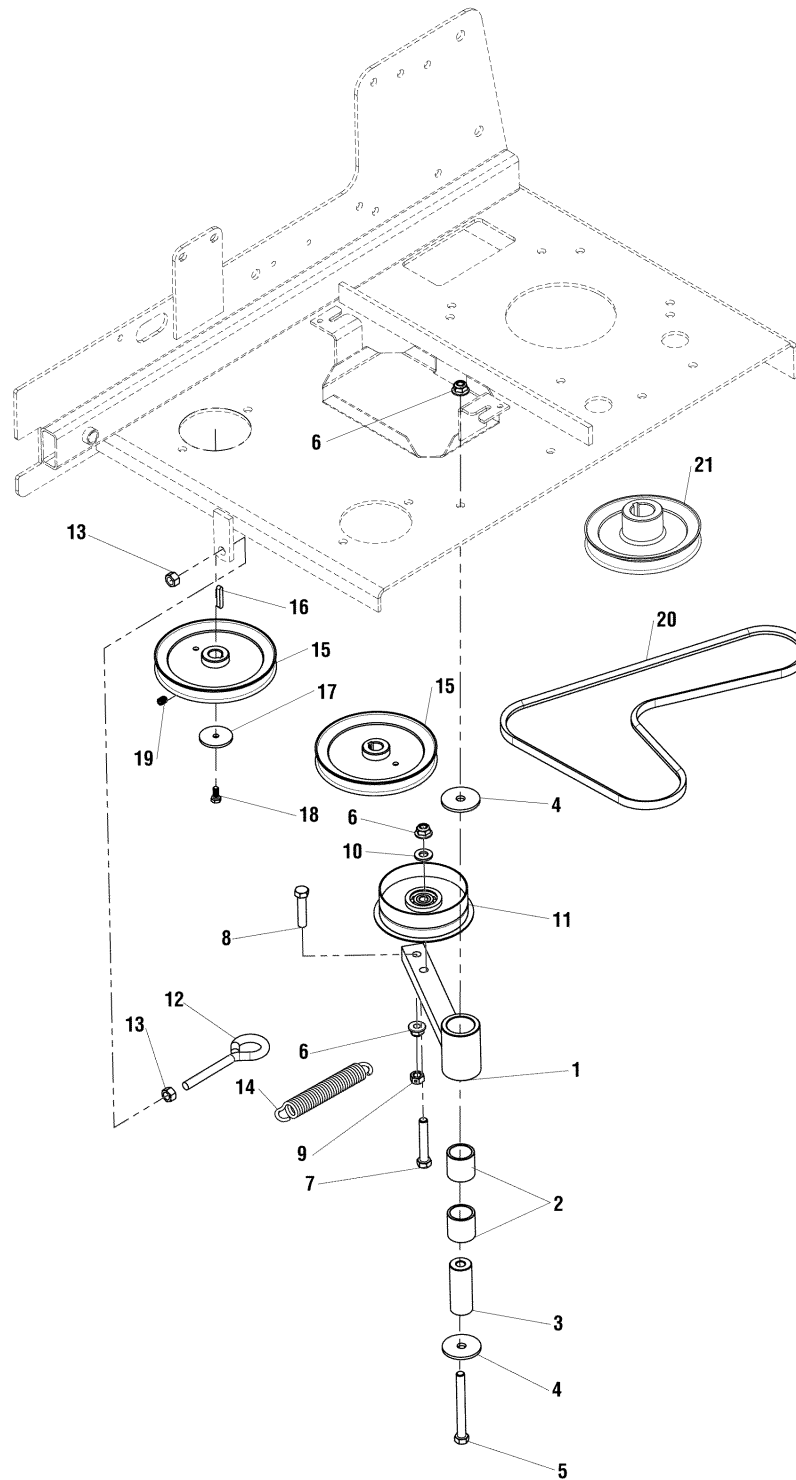
The above parts group applies to the following Mfg. Nos.:

5900704 (IS500ZBV2652)
5900729 (IS500ZBV2444 AUS/NZ)
5900730 (IS500ZBV2652 AUS/NZ)
5900640 (IS500ZBV2444)

Pump Drive Group

NOTE: Unless noted otherwise,
use the standard hardware torque
specification chart.

5300780



The above parts group applies to the following Mfg. Nos.:

- 5900704 (IS500ZBV2652)
- 5900729 (IS500ZBV2444 AUS/NZ)
- 5900730 (IS500ZBV2652 AUS/NZ)
- 5900640 (IS500ZBV2444)

Pump Drive Group

| REF NO | PART NO. | QTY. | DESCRIPTION |
|---------------|-----------------|-------------|---|
| 1 | 5046430B | 1 | WELD, ARM, PUMP DRIVE IDLER |
| 2 | 5022157 | 2 | BUSHING, BRASS, 1.25X1X1.25 |
| 3 | 5045135 | 1 | SPACER, .39 X 1.00 X 2.55 |
| 4 | 5025305 | 2 | WASHER, .41 X 1.75 X .14 |
| 5 | 5025013X28 | 1 | BOLT, 3/8-16 X 3-1/2" GD5 YZ |
| 6 | 5025394 | 3 | NUT, 3/8-16 HEX NYLOCK FLANGE |
| 7 | 5025013X18 | 1 | BOLT, 3/8-16 X 2-1/4" GD5 YZ |
| 8 | 5025013X14 | 1 | BOLT, 3/8-16 X 1-3/4" GD5 |
| 9 | 5025100 | 1 | NUT, 3/8-16 HEX SIDE LOCK |
| 10 | 5025293 | 1 | WASHER, 3/8" GD.9 FLAT |
| 11 | 5022621 | 1 | PULLEY, IDLER, SINGLE FLANGE |
| 12 | 5025429 | 1 | EYE BOLT, 3/8-16 X 4", 3/4" EYE |
| 13 | 5025034 | 2 | NUT, 3/8-16 HEX |
| 14 | 5022847 | 1 | SPRING, EXTENSION, SWIVEL END |
| 15 | 5100912 | 2 | PULLEY, PUMP DRIVE |
| 16 | 5023254 | 2 | KEY, 5MM SQ. W/ RADIUS |
| 17 | 5044577 | 2 | WASHER, .265 X 1.50 X .109, YZ |
| 18 | 5023215 | 2 | CAPSCREW,HEX HEAD M6-1.0X 14MM |
| 19 | 5025437 | 4 | SET SCREW, 5/16-24 X 3/8, KNUURL, W/PATCH |
| 20 | 5100923 | 1 | BELT,#7-9502, B-SECT - EL 67.8, HYDRO |
| 21 | 5100914 | 1 | PULLEY, CRANKSHAFT |

Footnotes

The above parts group applies to the following Mfg. Nos.:

5900704 (IS500ZBV2652)

5900729 (IS500ZBV2444 AUS/NZ)

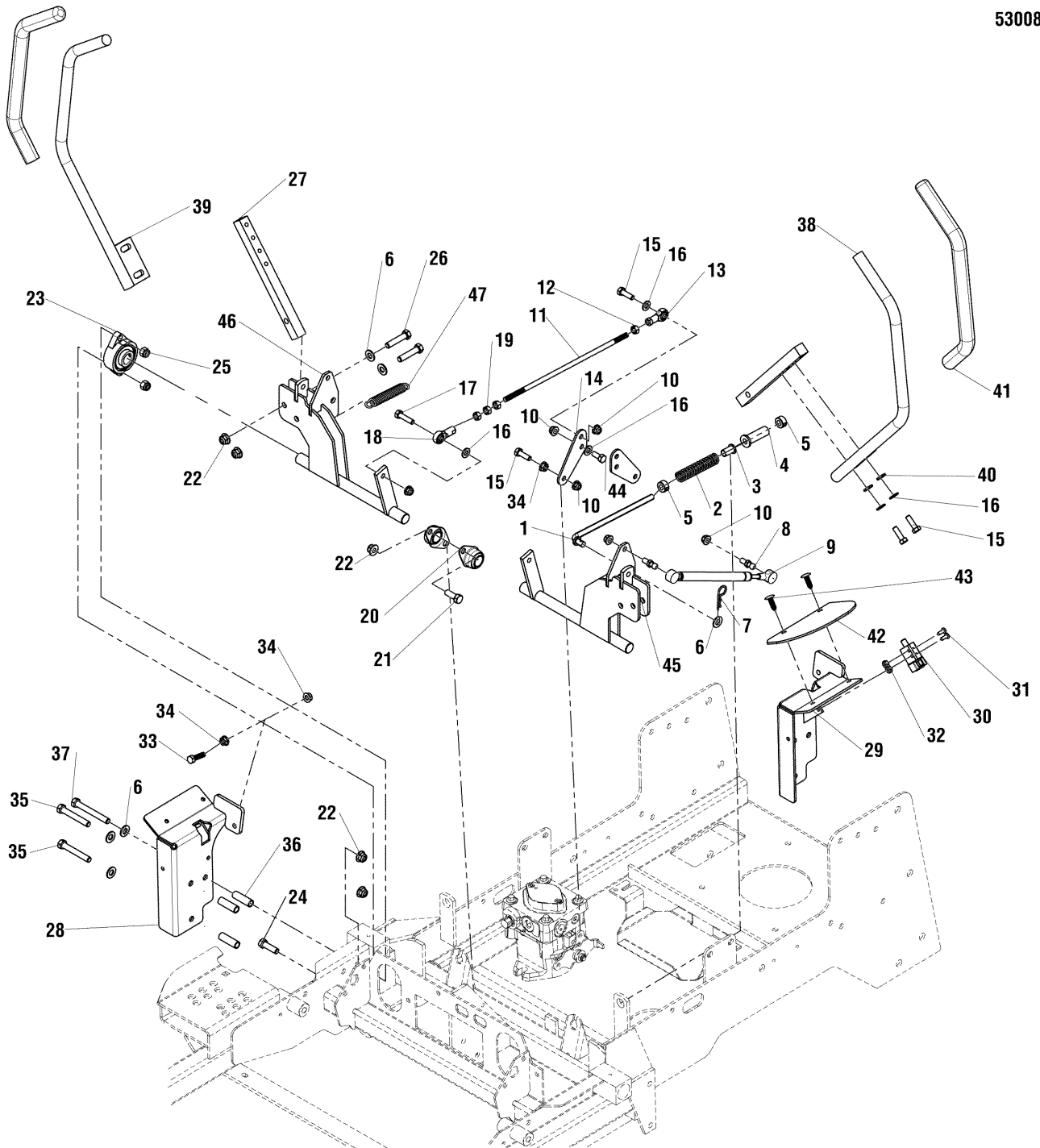
5900730 (IS500ZBV2652 AUS/NZ)

5900640 (IS500ZBV2444)

Motion Control Group

NOTE: Unless noted otherwise,
use the standard hardware torque
specification chart.

5300815



The above parts group applies to the following Mfg. Nos.:

- 5900704 (IS500ZBV2652)
- 5900729 (IS500ZBV2444 AUS/NZ)
- 5900730 (IS500ZBV2652 AUS/NZ)
- 5900640 (IS500ZBV2444)

Motion Control Group

| REF NO | PART NO. | QTY. | DESCRIPTION |
|--------|------------|------|--|
| 1 | 5100947 | 2 | ROD, NEUTRAL RETURN |
| 2 | 5022645 | 2 | SPRING, REVERSE RETURN |
| 3 | 5023260 | 2 | BUSHING, NYLON |
| 4 | 5100942 | 2 | BUSHING, FLANGED .375 X .630 X 2.00 |
| 5 | 5010546 | 4 | COLLAR, 3/8" SET |
| 6 | 5025156 | 12 | WASHER, 3/8" SAE |
| 7 | 5025210 | 2 | PIN, HAIR, .0915 X 1-7/8 |
| 8 | 5100941 | 4 | BALL STUD, 5/16 X .50,# PC-477-2) |
| 9 | 5100940 | 2 | DAMPENER, CONTROL,#(P6709/P3610) |
| 10 | 5025392 | 12 | NUT, 5/16-18 HEX NYLOCK FLANGE |
| 11 | 5100946 | 2 | ROD, HYDRO LINKAGE |
| 12 | 5023212 | 2 | NUT, 5/16-24 HEX, LH |
| 13 | 5022628 | 2 | BALL JOINT, 5/16-24, LH FEMALE |
| 14 | 5402622B | 2 | PLATE, PUMP SUPPORT - RED |
| 15 | 5025011X8 | 8 | BOLT, 5/16-18 X 1" GD5 YZ |
| 16 | 5025155 | 10 | WASHER, 5/16" SAE |
| 17 | 5025011X10 | 2 | BOLT, 5/16-18 X 1-1/4" GD5 YZ |
| 18 | 5021146 | 2 | BALL JOINT, 5/16-24, FEMALE |
| 19 | 5025033 | 6 | NUT, 5/16-24 HEX |
| 20 | 5021098 | 2 | BEARING, BRONZE FLANGE, 3/4 |
| 21 | 5025013X8 | 2 | BOLT, 3/8-16 X 1" GD5 YZ |
| 22 | 5025394 | 14 | NUT, 3/8-16 HEX NYLOCK FLANGE |
| 23 | 5021499 | 2 | BEARING, FLANGE |
| 24 | 5025013X10 | 2 | BOLT, 3/8-16 X 1-1/4" GD5 |
| 25 | 5025096 | 4 | NUT, 3/8-16 HEX NYLON LOCK |
| 26 | 5025013X14 | 8 | BOLT, 3/8-16 X 1-3/4" GD5 |
| 27 | 5047004 | 2 | MOUNT, CONTROL ARM |
| 28 | 5402595B | 1 | WELD, NEUTRAL LOCK - RH - IS500Z - RED |
| 29 | 5402594B | 1 | WELD, NEUTRAL LOCK - LH - IS500Z - RED |
| 30 | 5022095 | 2 | SWITCH, PLUNGER, N.O./N.C. |
| 31 | 5025179X4 | 4 | SCREW, #10-24 X 1/2" ROUND PHILLIPS |
| 32 | 5025029 | 4 | NUT, #10-24 HEX |
| 33 | 5025011X9 | 2 | BOLT, 5/16-18 X 1-1/8" GD5 |
| 34 | 5025127 | 4 | NUT, 5/16-18 HEX SERRATED FLANGE (SMALL) |
| 35 | 5025013X20 | 4 | BOLT, 3/8-16 X 2-1/2" GD5 YZ |
| 36 | 5044992 | 6 | SPACER, .38 X .50 X 1.56 |
| 37 | 5025013X24 | 2 | BOLT, 3/8-16 X 3" GD5 YZ |
| 38 | 5047055B | 1 | WELD, HANDLE MOTION CONTROL-LH |
| 39 | 5047056B | 1 | WELD, HANDLE MOTION CONTROL-RH |
| 40 | 5025170 | 4 | WASHER, 5/16" LOCK |
| 41 | 5022068 | 2 | GRIP, FOAM, 3/4" ID, 16" LONG |

Footnotes

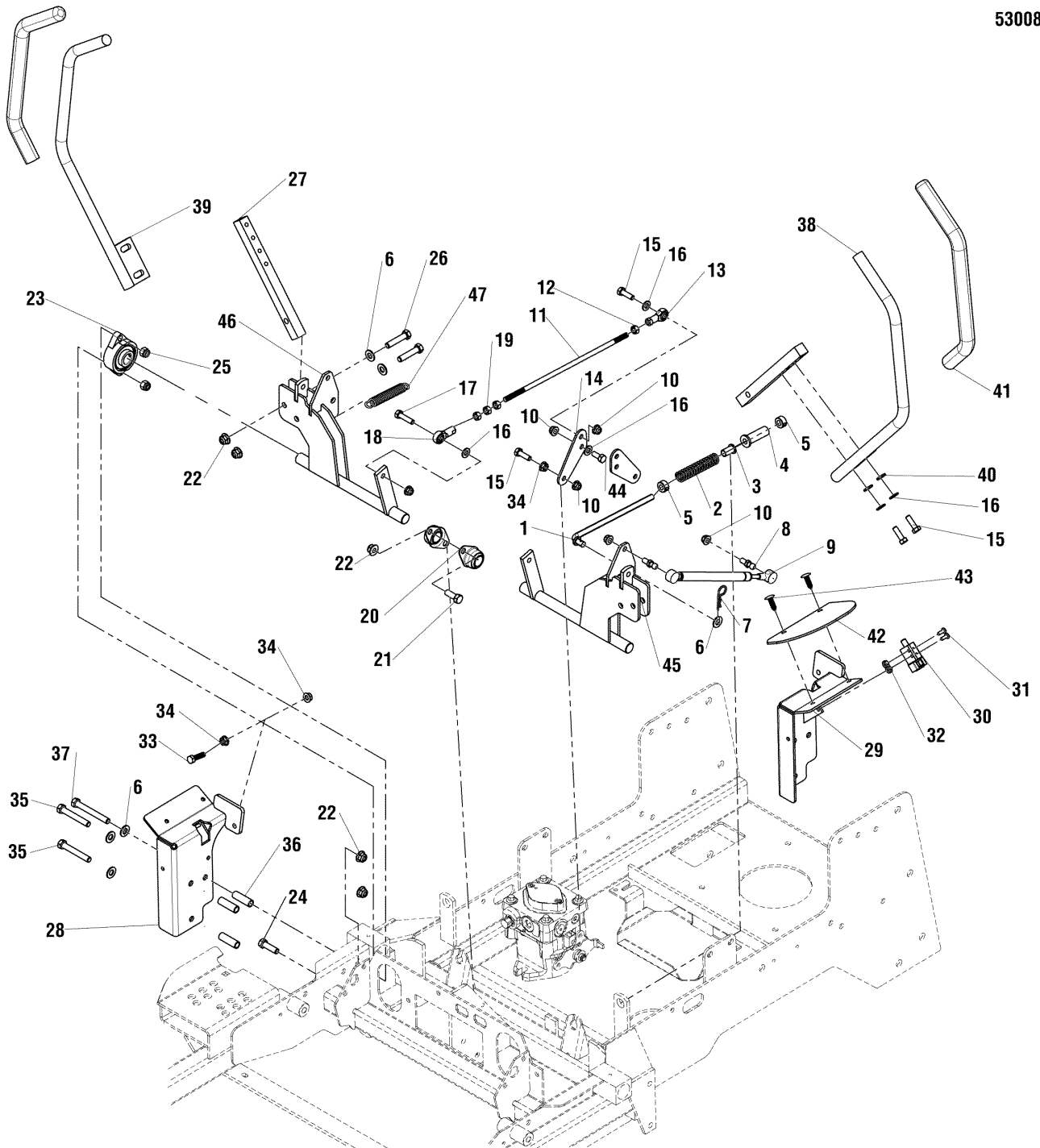
The above parts group applies to the following Mfg. Nos.:

5900704 (IS500ZBV2652)
5900729 (IS500ZBV2444 AUS/NZ)
5900730 (IS500ZBV2652 AUS/NZ)
5900640 (IS500ZBV2444)

Motion Control Group

NOTE: Unless noted otherwise,
use the standard hardware torque
specification chart.

5300815



The above parts group applies to the following Mfg. Nos.:

- 5900704 (IS500ZBV2652)
- 5900729 (IS500ZBV2444 AUS/NZ)
- 5900730 (IS500ZBV2652 AUS/NZ)
- 5900640 (IS500ZBV2444)

Motion Control Group

| REF NO | PART NO. | QTY. | DESCRIPTION |
|---------------|-----------------|-------------|---------------------------------------|
| 42 | 5100948 | 2 | GUARD, RUBBER MOT CTRS - IS500Z |
| 43 | 5025431 | 4 | PUSH RIVET (TREE TYPE), BLACK |
| 44 | 5025011X6 | 1 | BOLT, 5/16-18 X 3/4" GRD5 |
| 45 | 5402588B | 1 | WELD, SHAFT MOTION CONTROL - LH - RED |
| 46 | 5402589B | 1 | WELD, SHAFT MOTION CONTROL - RH - RED |
| 47 | 5020639 | 2 | SPRING, EXTENSION |

Footnotes

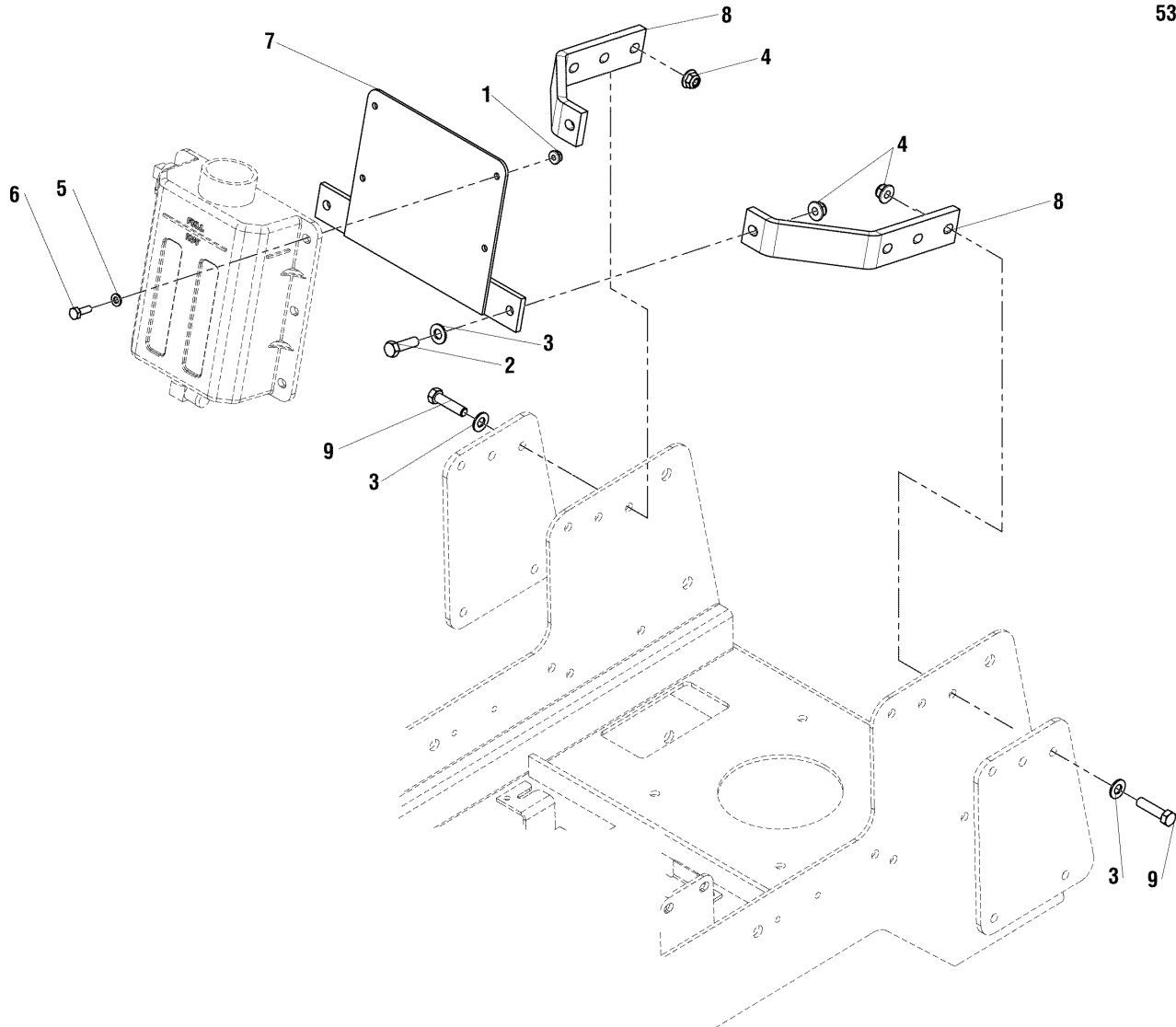
The above parts group applies to the following Mfg. Nos.:

5900704 (IS500ZBV2652)
5900729 (IS500ZBV2444 AUS/NZ)
5900730 (IS500ZBV2652 AUS/NZ)
5900640 (IS500ZBV2444)

Hydraulic Mount Group

NOTE: Unless noted otherwise,
use the standard hardware torque
specification chart.

5300656



The above parts group applies to the following Mfg. Nos.:

- 5900704 (IS500ZBV2652)
- 5900729 (IS500ZBV2444 AUS/NZ)
- 5900730 (IS500ZBV2652 AUS/NZ)
- 5900640 (IS500ZBV2444)

Hydraulic Mount Group

| REF NO | PART NO. | QTY. | DESCRIPTION |
|--------|------------|------|-------------------------------|
| 1 | 5025391 | 4 | NUT, 1/4-20 HEX NYLOCK FLANGE |
| 2 | 5025013X10 | 2 | BOLT, 3/8-16 X 1-1/4" GD5 |
| 3 | 5025156 | 6 | WASHER, 3/8" SAE |
| 4 | 5025394 | 6 | NUT, 3/8-16 HEX NYLOCK FLANGE |
| 5 | 5025010X6 | 4 | BOLT, 1/4-20 X 3/4" GD5 YZ |
| 6 | 5025154 | 4 | WASHER, 1/4" SAE |
| 7 | 5061747B | 1 | WELD, HYD TANK MOUNT |
| 8 | 5061746B | 2 | BRACKET, HYDRAULIC TANK |
| 9 | 5025013X12 | 4 | BOLT, 3/8-16 X 1-1/2" GD5 YZ |

Footnotes

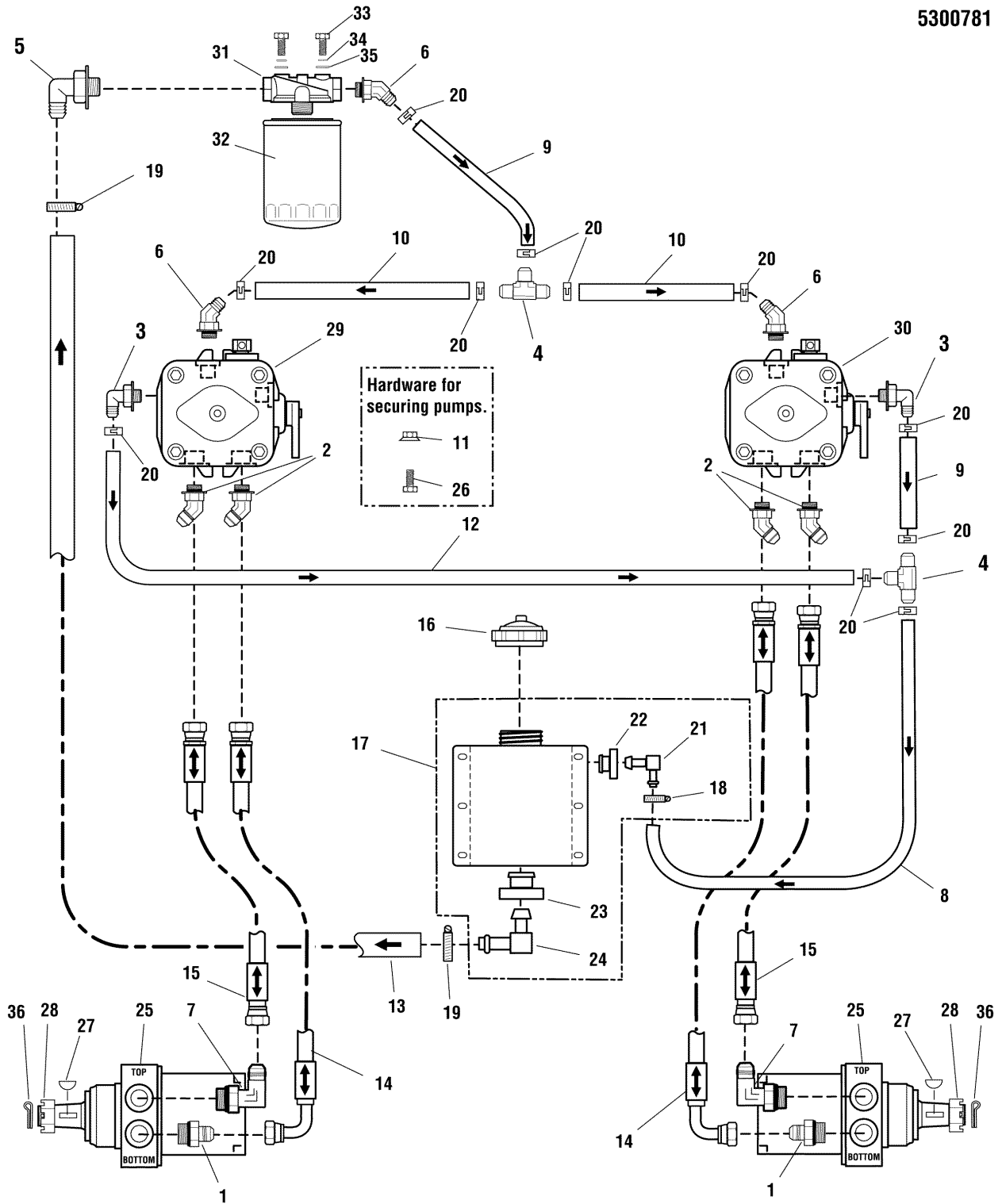
The above parts group applies to the following Mfg. Nos.:

5900704 (IS500ZBV2652)
5900729 (IS500ZBV2444 AUS/NZ)
5900730 (IS500ZBV2652 AUS/NZ)
5900640 (IS500ZBV2444)

Hydraulic Group

NOTE: Unless noted otherwise, use the standard hardware torque specification chart.

5300781



The above parts group applies to the following Mfg. Nos.:

- 5900704 (IS500ZBV2652)
- 5900729 (IS500ZBV2444 AUS/NZ)
- 5900730 (IS500ZBV2652 AUS/NZ)
- 5900640 (IS500ZBV2444)

Hydraulic Group

| REF NO | PART NO. | QTY. | DESCRIPTION |
|--------|--------------|------|---|
| 1 | 5022633 | 2 | ADAPTER, HYD. |
| 2 | 5023338 | 4 | FITTING, #8 JIC - #8 O-RING, 45 DEG. |
| 3 | 5023267 | 2 | ADAPTER, 90 DEG, 9/16-3/8 BARB |
| 4 | 5022920 | 2 | FITTING, TEE, 1/2" HOSE |
| 5 | 5023346 | 1 | ADAPTER, 90 DEG, 9/16-5/8 BARB |
| 6 | 5023461 | 3 | ADAPTER, 45 DEG, 9/16-3/8 BARB |
| 7 | 5022599 | 2 | FITTING, #8 JIC - #8 O-RING, 90 DEG. |
| 8 | 5050860X18P5 | 1 | HOSE, 3/8" PUSH-LOCK, 18.50" |
| 9 | 5050860X6P5 | 2 | HOSE, 3/8" PUSH-LOCK, 6.50" |
| 10 | 5050860X6 | 2 | HOSE, 3/8" PUSH-LOCK, 6.00" |
| 11 | 5025128 | 4 | NUT, 3/8-16 HEX SERRATED FLANGE |
| 12 | 5050860X19 | 1 | HOSE, 3/8" PUSH-LOCK, 19.00" |
| 13 | 5050933X24P5 | 1 | HOSE, 5/8 PUSH-LOCK, 24.50" |
| 14 | 5023370 | 2 | HOSE ASSEMBLY (25") |
| 15 | 5022711 | 2 | HOSE ASSEMBLY (21") |
| 16 | 5100017 | 1 | CAP, HYDRAULIC |
| 17 | 5061712 | 1 | TANK, HYDRAULIC, ASSEMBLY (Includes Ref. Nos 21,22,23, and 24.) |
| 18 | 5022922 | 1 | CLAMP, #4 HOSE, STAINLESS |
| 19 | 5021164 | 2 | CLAMP, #10 HOSE, STAINLESS |
| 20 | 5023268 | 11 | CLAMP, HOSE |
| 21 | 5023118 | 1 | FITTING, ELBOW, 3/8" |
| 22 | 5023120 | 1 | GROMMET |
| 23 | 5023121 | 1 | GROMMET |
| 24 | 5023119 | 1 | FITTING, ELBOW, 5/8" |
| 25 | 5023316 | 2 | MOTOR, WHEEL (Includes Ref. Nos 27 and 28) |
| 26 | 5025013X10 | 4 | BOLT, 3/8-16 X 1-1/4" GD5 |
| 27 | 5022042X2 | 2 | KEY |
| 28 | 5022042X3 | 2 | NUT, CASTLE, 1-20 |
| 29 | 5100072 | 1 | PUMP, HYDRAULIC, LH |
| 30 | 5100073 | 1 | PUMP, HYDRAULIC, RH |
| 31 | 5023096 | 1 | FILTER HEAD, HYDRAULIC |
| 32 | 1719168 | 1 | FILTER, OIL |
| 33 | 5025010X6 | 2 | BOLT, 1/4-20 X 3/4" GD5 YZ |
| 34 | 5025154 | 2 | WASHER, 1/4" SAE |
| 35 | 5025169 | 2 | WASHER, 1/4" LOCK |
| 36 | 5025203X16 | 2 | PIN, COTTER, 1/8" X 2" |

Footnotes

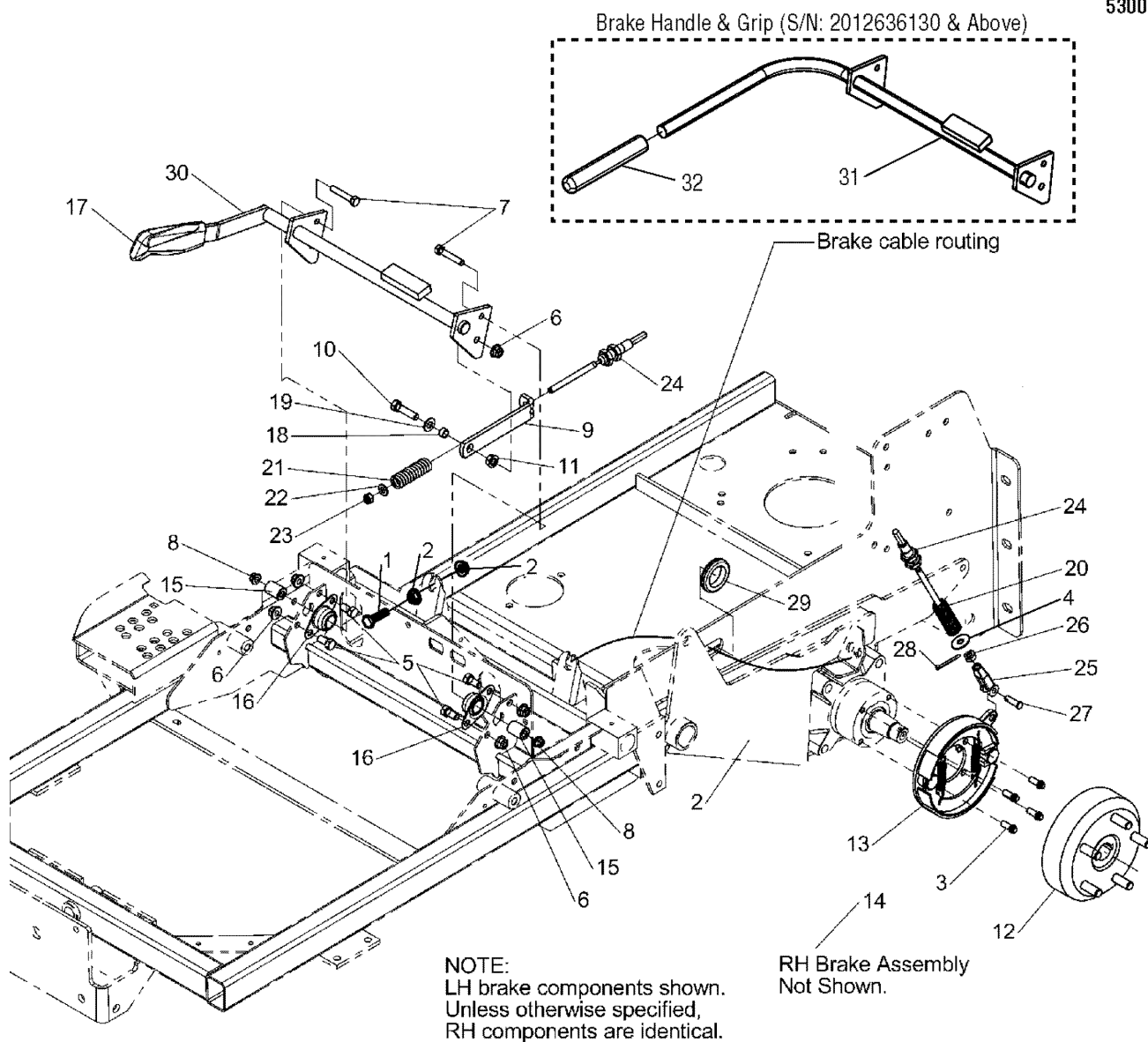
The above parts group applies to the following Mfg. Nos.:

5900704 (IS500ZBV2652)
 5900729 (IS500ZBV2444 AUS/NZ)
 5900730 (IS500ZBV2652 AUS/NZ)
 5900640 (IS500ZBV2444)

Parking Brake Group

NOTE: Unless noted otherwise, use the standard hardware torque specification chart.

5300132



The above parts group applies to the following Mfg. Nos.:

- 5900704 (IS500ZBV2652)
- 5900729 (IS500ZBV2444 AUS/NZ)
- 5900730 (IS500ZBV2652 AUS/NZ)
- 5900640 (IS500ZBV2444)

Parking Brake Group

| REF NO | PART NO. | QTY. | DESCRIPTION |
|--------|------------|------|---|
| 1 | 5025011X9 | 1 | BOLT, 5/16-18 X 1-1/8" GD5 |
| 2 | 5025139 | 2 | NUT, 5/16-18 HEX SERRATED FLANGE (LARGE) |
| 3 | 5023490 | 8 | BOLT, 5/16-18 X 3/4 12PT FLANGE - PATCH |
| 4 | 5025337 | 2 | WASHER, 5/16" USS |
| 5 | 5025013X6 | 4 | BOLT, 3/8-16 X 3/4" GD5 YZ |
| 6 | 5025394 | 6 | NUT, 3/8-16 HEX NYLOCK FLANGE |
| 7 | 5025011X14 | 2 | BOLT, 5/16-18 X 1-3/4" GD5 YZ |
| 8 | 5025392 | 2 | NUT, 5/16-18 HEX NYLOCK FLANGE |
| 9 | 5061794B | 2 | LINK, BRAKE STOP, 6.0 |
| 10 | 5025013X12 | 2 | BOLT, 3/8-16 X 1-1/2" GD5 YZ |
| 11 | 5025128 | 2 | NUT, 3/8-16 HEX SERRATED FLANGE |
| 12 | 5023368 | 2 | DRUM, 1-1/4" TAPER, 5 BOLT |
| 13 | 5023500 | 1 | ASSM, BRAKE, 1-1/4 HUB, LH |
| 14 | 5023501 | 1 | ASSM, BRAKE, 1-1/4 HUB, RH (Not Shown) |
| 15 | 5042134 | 2 | SPACER, .32 X .75 X 1.06 |
| 16 | 5021098 | 2 | BEARING, BRONZE FLANGE, 3/4 |
| 17 | 5100171 | 1 | GRIP, BLACK FLEXIBLE (S/N: 2012636129 & Below) |
| 18 | 5041930 | 2 | SPACER, .38 X .50 X .27 |
| 19 | 5025156 | 2 | WASHER, 3/8" SAE |
| 20 | 5023320 | 2 | SPRING, COMPRESSION |
| 21 | 5022361 | 2 | SPRING, BRAKE |
| 22 | 5025155 | 2 | WASHER, 5/16" SAE |
| 23 | 5025045 | 2 | NUT, 5/16-24 HEX NYLON LOCK |
| 24 | 5023324 | 2 | CABLE, PARKING BRAKE |
| 25 | 5020979 | 2 | CLEVIS, 5/16-24, PLASTIC |
| 26 | 5025033 | 2 | NUT, 5/16-24 HEX |
| 27 | 5025213X8 | 2 | PIN, CLEVIS, 5/16" X 1 |
| 28 | 5025211 | 2 | PIN, HAIR, .0585" X 1-1/8" |
| 29 | 5021397 | 2 | GROMMET, 1-1/4 |
| 30 | 5049831B | 1 | WELD, BRAKE SHAFT (S/N: 2012636129 & Below) |
| 31 | 5403631B | 1 | WELD, BRAKE SHAFT - RED (S/N: 2012636130 & Above) |
| 32 | 5101038 | 1 | GRIP, FOAM, 3/4 ID X 6 X .187 (S/N: 2012636130 & Above) |

Footnotes

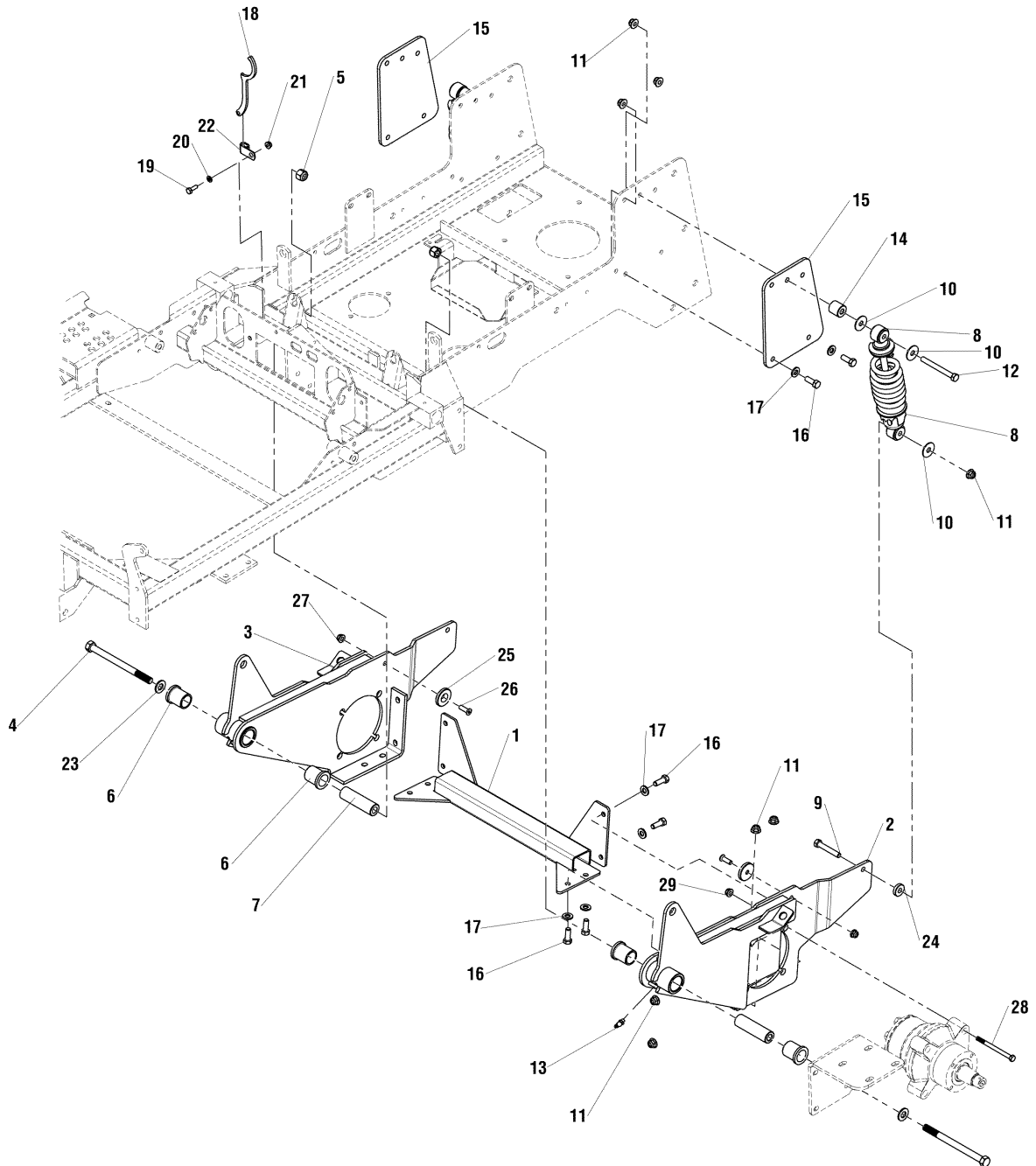
The above parts group applies to the following Mfg. Nos.:

5900704 (IS500ZBV2652)
5900729 (IS500ZBV2444 AUS/NZ)
5900730 (IS500ZBV2652 AUS/NZ)
5900640 (IS500ZBV2444)

Rear Suspension Group

NOTE: Unless noted otherwise,
use the standard hardware torque
specification chart.

5300783



The above parts group applies to the following Mfg. Nos.:

- 5900704 (IS500ZBV2652)
- 5900729 (IS500ZBV2444 AUS/NZ)
- 5900730 (IS500ZBV2652 AUS/NZ)
- 5900640 (IS500ZBV2444)

Rear Suspension Group

| REF NO | PART NO. | QTY. | DESCRIPTION |
|--------|------------|------|---------------------------------------|
| 1 | 5401355B | 1 | WELD, TIE BAR - RED |
| 2 | 5402523B | 1 | WELD, MOTOR MOUNT - LH - IS500Z - RED |
| 3 | 5402524B | 1 | WELD, MOTOR MOUNT - RH - IS500Z - RED |
| 4 | 5025017X52 | 2 | BOLT, 1/2-13 X 6-1/2" GD8 YZ |
| 5 | 5025056 | 2 | NUT, 1/2-13 HEX NYLON LOCK |
| 6 | 5021541 | 4 | BUSHING, FLANGE |
| 7 | 5061339 | 2 | SPACER, .52 X 1.00 X 3.42 |
| 8 | 5023436 | 2 | SHOCK ABSORBER |
| 9 | 5025013X16 | 2 | BOLT, 3/8-16 X 2" GD5 YZ |
| 10 | 5025165 | 6 | WASHER, 3/8" FENDER |
| 11 | 5025394 | 16 | NUT, 3/8-16 HEX NYLOCK FLANGE |
| 12 | 5025013X28 | 2 | BOLT, 3/8-16 X 3-1/2" GD5 YZ |
| 13 | 5020020 | 2 | GREASE FITTING, 45 DEGREE |
| 14 | 5100896 | 2 | SPACER, .390 X 1.00 X 1.00 - YZ |
| 15 | 5402456B | 2 | PLATE, FRAME SUPPORT - IS500 - RED |
| 16 | 5025013X8 | 12 | BOLT, 3/8-16 X 1" GD5 YZ |
| 17 | 5025293 | 12 | WASHER, 3/8" GD.9 FLAT |
| 18 | 5022853 | 1 | SPANNER WRENCH |
| 19 | 5025010X6 | 1 | BOLT, 1/4-20 X 3/4" GD5 YZ |
| 20 | 5025154 | 1 | WASHER, 1/4" SAE |
| 21 | 5025391 | 1 | NUT, 1/4-20 HEX NYLOCK FLANGE |
| 22 | 5025430 | 1 | CLAMP, 5/16", DOUBLE, WIRE & TUBE |
| 23 | 5025158 | 2 | WASHER, 1/2" SAE |
| 24 | 5044960 | 2 | SPACER, .39 X 1.00 X .25 |
| 25 | 5400065 | 2 | SPACER, .34 X 1.54 X .25 UHMW |
| 26 | 5025303 | 2 | SCREW, 5/16-18 X 1 FLAT HD SC |
| 27 | 5025392 | 2 | NUT, 5/16-18 HEX NYLOCK FLANGE |
| 28 | 5023481 | 8 | BOLT, 1/2-13 X 2-1/4" WITH PATCH |
| 29 | 5025330 | 8 | NUT, 1/2-13 SQUARE |

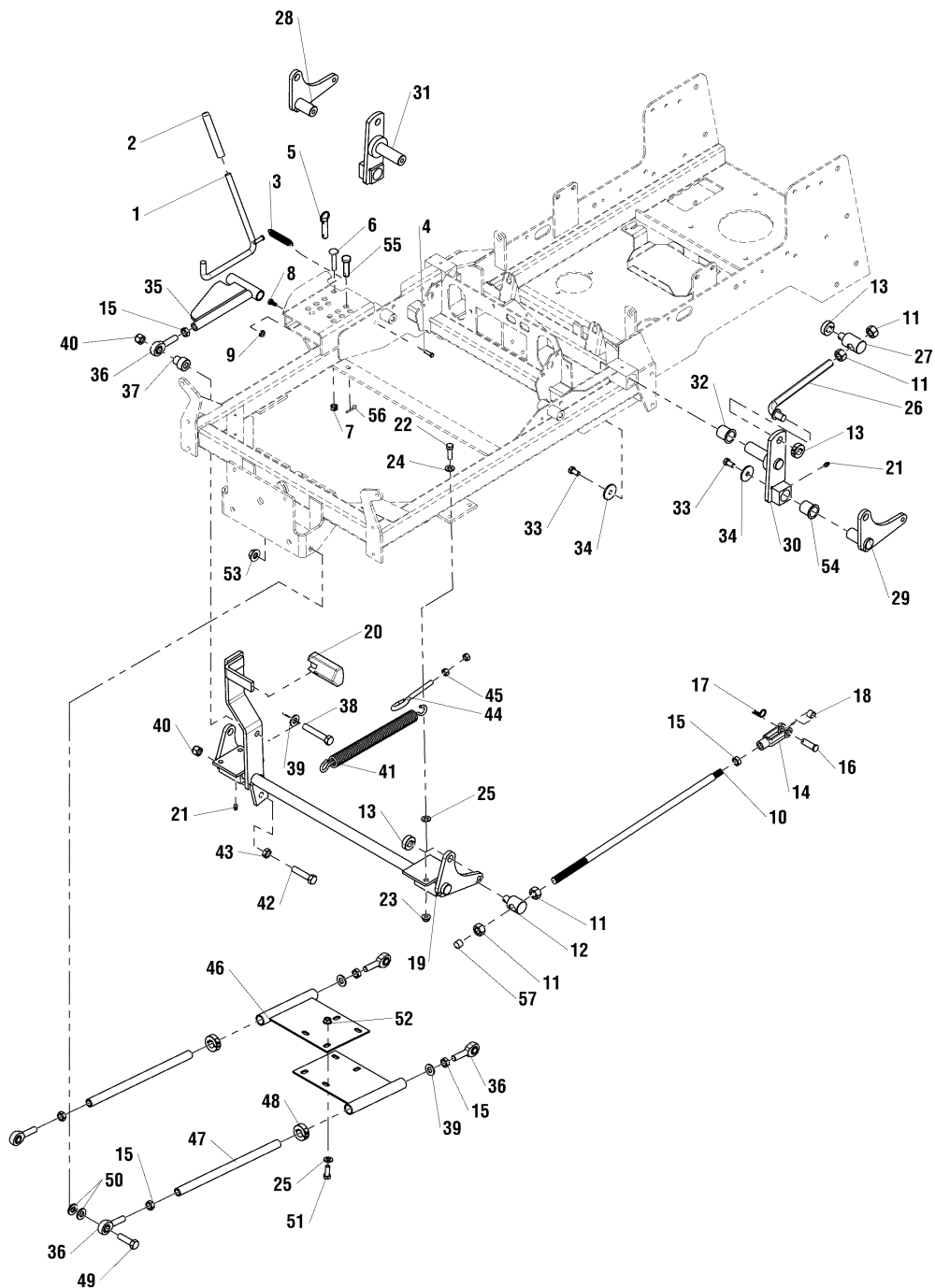
Footnotes

The above parts group applies to the following Mfg. Nos.:

5900704 (IS500ZBV2652)
5900729 (IS500ZBV2444 AUS/NZ)
5900730 (IS500ZBV2652 AUS/NZ)
5900640 (IS500ZBV2444)

Deck Lift Group

NOTE: Unless noted otherwise,
use the standard hardware torque
specification chart.



The above parts group applies to the following Mfg. Nos.:

- 5900704 (IS500ZBV2652)
- 5900729 (IS500ZBV2444 AUS/NZ)
- 5900730 (IS500ZBV2652 AUS/NZ)
- 5900640 (IS500ZBV2444)

Deck Lift Group

| REF NO | PART NO. | QTY. | DESCRIPTION |
|--------|------------|------|--|
| 1 | 5061527B | 1 | WELD, ROD DECK LIFT |
| 2 | 5021880 | 1 | GRIP, FOAM |
| 3 | 5020639 | 1 | SPRING, EXTENSION |
| 4 | 5025212X7 | 1 | PIN, CLEVIS, 1/4" X 7/8" |
| 5 | 5023498 | 1 | PIN, HITCH, 1/2 X 2.00 OAL, YP |
| 6 | 5025146X16 | 1 | BOLT, 3/8-16 X 2", CARRIAGE |
| 7 | 5025100 | 1 | NUT, 3/8-16 HEX SIDE LOCK |
| 8 | 5025010X5 | 2 | BOLT, 1/4-20 X 5/8" GD5 YZ |
| 9 | 5025126 | 2 | NUT, 1/4-20 HEX SERR. FLANGE |
| 10 | 5049971 | 2 | ROD, DECK LIFT ADJUSTMENT |
| 11 | 5025040 | 8 | NUT, 5/8-11 HEX |
| 12 | 5045447 | 2 | PIVOT, SPRING ROD |
| 13 | 5020441 | 6 | COLLAR, 5/8" SPLIT |
| 14 | 5023174 | 2 | CLEVIS, 1/2-20, STEEL |
| 15 | 5025089 | 7 | NUT, 1/2-20 HEX JAM |
| 16 | 5025328X12 | 2 | PIN, CLEVIS, 1/2 X 1 1/2, YZP |
| 17 | 5025210 | 2 | PIN, HAIR, .0915 X 1-7/8 |
| 18 | 5061780 | 2 | BUSHING, .510 X .625 X .500 |
| 19 | 5402540B | 1 | WELD, DECK LIFT SHAFT - RED |
| 20 | 1715834 | 1 | RUBBER, FOOT PEDAL |
| 21 | 5020095 | 4 | GREASE FITTING, 1/4-28 STRAIGHT |
| 22 | 5025013X10 | 4 | BOLT, 3/8-16 X 1-1/4" GD5 |
| 23 | 5025394 | 4 | NUT, 3/8-16 HEX NYLOCK FLANGE |
| 24 | 5025293 | 8 | WASHER, 3/8" GD.9 FLAT |
| 25 | 5025156 | 8 | WASHER, 3/8" SAE |
| 26 | 5049848 | 2 | ROD, DECK LIFT |
| 27 | 5045856 | 2 | PIVOT, SPRING ROD |
| 28 | 5402521B | 1 | WELD, DECK HANGER, REAR - RH - RED |
| 29 | 5402522B | 1 | WELD, DECK HANGER, REAR - LH - RED |
| 30 | 5402533B | 1 | WELD, REAR LIFT, LH , IS500Z - RED |
| 31 | 5402534B | 1 | WELD, REAR LIFT, RH , IS500Z - RED |
| 32 | 5023343 | 4 | BUSHING, 1.00 X 1.13 X 1.38, PLASTIC |
| 33 | 5025443 | 4 | BOLT, 3/8-16 X 3/4, GD5, YZ WITH PATCH |
| 34 | 5100548 | 4 | WASHER, .390 X 1.50 X .109, YZ |
| 35 | 5061523B | 1 | WELD, DECK ADJUST LINK |
| 36 | 5022434 | 5 | BALL JOINT, 1/2-20, MALE |
| 37 | 5047103 | 1 | ADAPTER, CASTER AXLE |
| 38 | 5025017X24 | 1 | BOLT, 1/2-13 X 3" GD5 |
| 39 | 5025158 | 1 | WASHER, 1/2" SAE |
| 40 | 5025056 | 2 | NUT, 1/2-13 HEX NYLON LOCK |
| 41 | 5023355 | 1 | SPRING, DECK LIFT ASSIST |

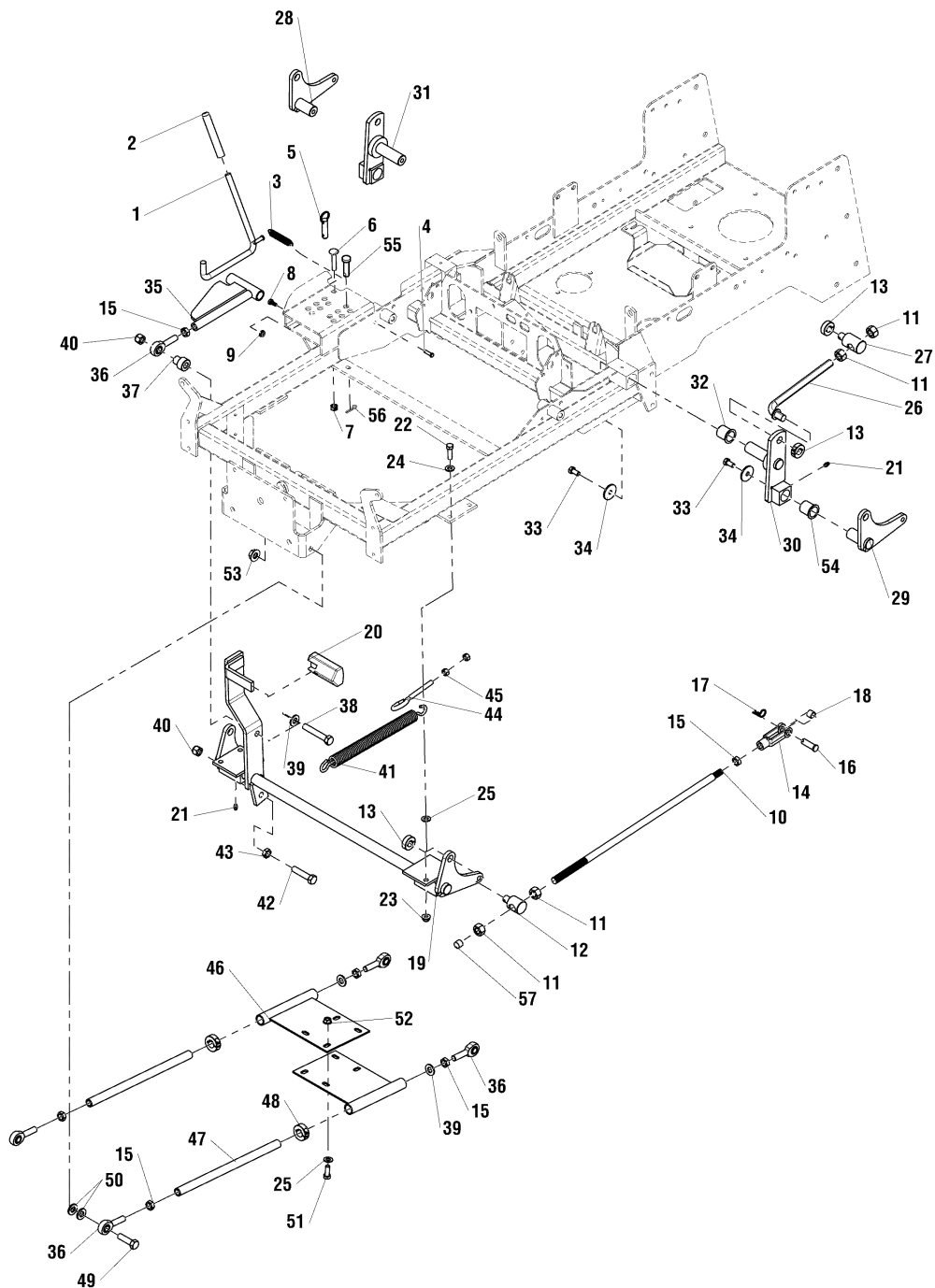
Footnotes

The above parts group applies to the following Mfg. Nos.:

5900704 (IS500ZBV2652)
 5900729 (IS500ZBV2444 AUS/NZ)
 5900730 (IS500ZBV2652 AUS/NZ)
 5900640 (IS500ZBV2444)

Deck Lift Group

NOTE: Unless noted otherwise,
use the standard hardware torque
specification chart.



The above parts group applies to the following Mfg. Nos.:

- 5900704 (IS500ZBV2652)
- 5900729 (IS500ZBV2444 AUS/NZ)
- 5900730 (IS500ZBV2652 AUS/NZ)
- 5900640 (IS500ZBV2444)

Deck Lift Group

| REF NO | PART NO. | QTY. | DESCRIPTION |
|--------|------------|------|---------------------------------|
| 42 | 5025017X18 | 1 | BOLT, 1/2-13 X 2-1/4" GD5 YZ |
| 43 | 5025301 | 1 | NUT, 1/2-13 HEX JAM |
| 44 | 5023497 | 1 | EYE BOLT, 3/8-16 X 5", 1" EYE |
| 45 | 5025034 | 2 | NUT, 3/8-16 HEX |
| 46 | 5049867B | 2 | WELD, DECK STABILIZER |
| 47 | 5049868 | 2 | SHAFT, DECK STABILIZER |
| 48 | 5010114 | 2 | COLLAR, 3/4" SPLIT |
| 49 | 5025018X14 | 4 | BOLT, 1/2-20 X 1-3/4" GD5 YZ |
| 50 | 5025158 | 8 | WASHER, 1/2" SAE |
| 51 | 5025013X8 | 4 | BOLT, 3/8-16 X 1" GD5 YZ |
| 52 | 5025128 | 4 | NUT, 3/8-16 HEX SERRATED FLANGE |
| 53 | 5025098 | 4 | NUT, 1/2-20 HEX NYLON LOCK |
| 54 | 5023356 | 4 | BUSHING, 1.00X1.13X.75, PLA |
| 55 | 5025328X16 | 1 | PIN, CLEVIS, 1/2 X 2 YZP |
| 56 | 5025203X10 | 1 | PIN, COTTER, 1/8" X 1-1/4" |
| 57 | 5101028 | 2 | CAP, VINYL - .562 X .750 - BLK |

Footnotes

The above parts group applies to the following Mfg. Nos.:

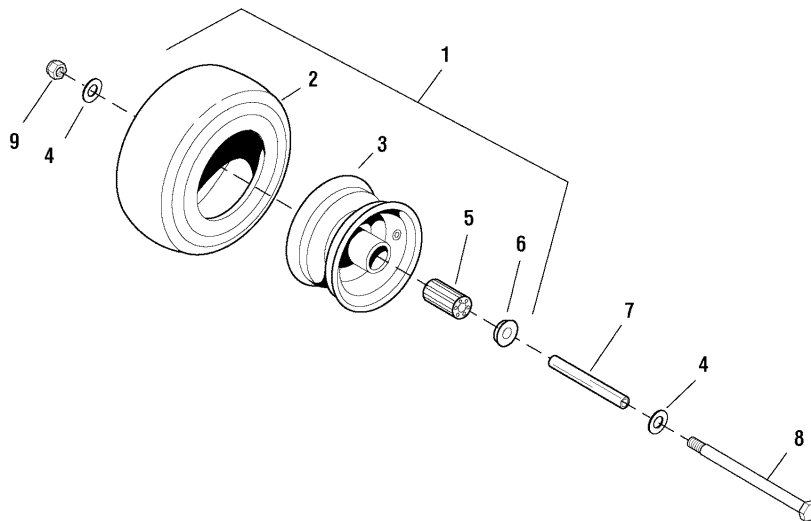
5900704 (IS500ZBV2652)
5900729 (IS500ZBV2444 AUS/NZ)
5900730 (IS500ZBV2652 AUS/NZ)
5900640 (IS500ZBV2444)

Wheel & Tire Group

NOTE: Unless noted otherwise,
use the standard hardware torque
specification chart.

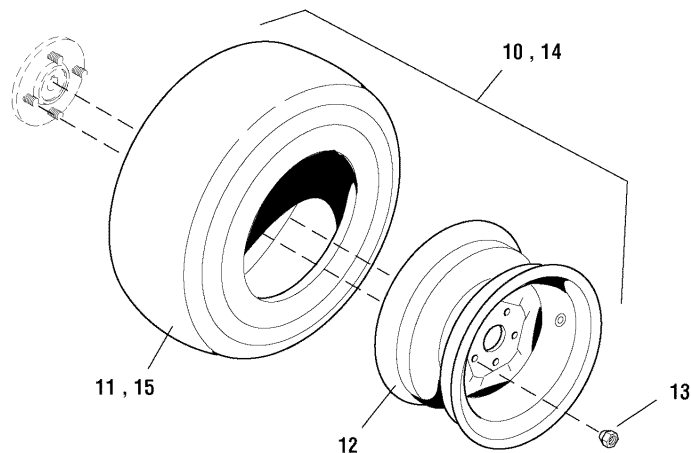
5300784

Front Wheels & Tires



Inflate to 40 PSI (2,76 bar)

Rear Wheels & Tires



Inflate to 15 PSI (1,03 bar)

The above parts group applies to the following Mfg. Nos.:

5900704 (IS500ZBV2652)
5900729 (IS500ZBV2444 AUS/NZ)
5900730 (IS500ZBV2652 AUS/NZ)
5900640 (IS500ZBV2444)

Wheel & Tire Group

| REF NO | PART NO. | QTY. | DESCRIPTION |
|--------|------------|------|--|
| 1 | 5022433S | 2 | WHEEL, CASTER, 11X4.0-5 SILVER (Includes Ref Nos 2 & 3) |
| 2 | 5022433X1 | 2 | TIRE, FRONT, 11 X 4.0 - 5 |
| 3 | 5022433S2 | 2 | WHEEL ASSEMBLY, COMPLETE |
| 4 | 5025158 | 4 | WASHER, 1/2" SAE |
| 5 | 5021042 | 4 | BEARING, ROLLER |
| 6 | 5021043 | 4 | BEARING, RETAINER |
| 7 | 5045996 | 2 | CASTER AXLE DDSH |
| 8 | 5025017X56 | 2 | BOLT, 1/2-13 X 7" GD8 YZ |
| 9 | 5025056 | 2 | NUT, 1/2-13 HEX NYLON LOCK |
| 10 | 5100932 | 2 | TIRE ASM, REAR, 20 X 8.0 X 10 #40713 (24HP Models Only) (Includes Ref Nos 11 & 12) |
| 11 | 5023095X1 | 2 | TIRE, REAR, 20 X 8.0 X 10, RUBBER ONLY (24HP Models Only) |
| 12 | 5023369X1 | 2 | WHEEL ASSEMBLY |
| 13 | 5020601 | 10 | NUT, 1/2-20, FOR WHEEL BOLT SILVER |
| 14 | 5101345 | 2 | TIRE ASM, REAR, 20 X 10 X 10 (26HP Models Only) (Includes Ref Nos 12 & 15) |
| 15 | 5101345X1 | 2 | TIRE, REAR, 20 X 10 X 10, RUBBER ONLY (26HP Models Only) |

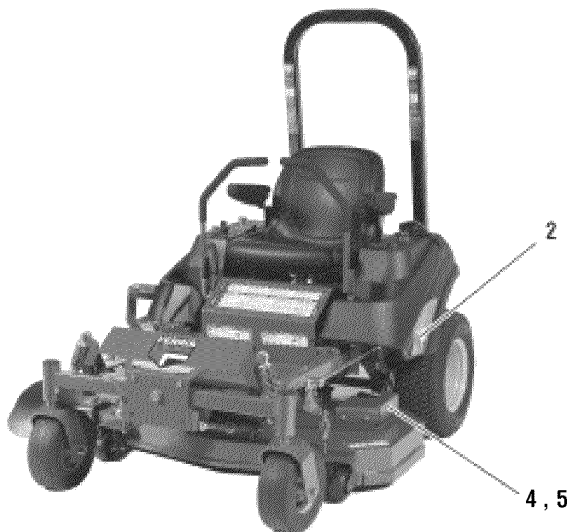
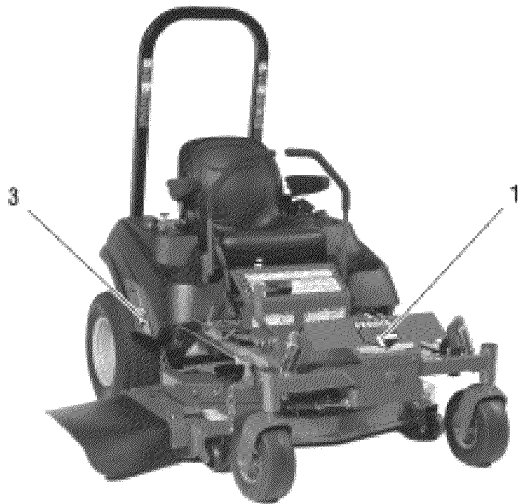
Footnotes

The above parts group applies to the following Mfg. Nos.:

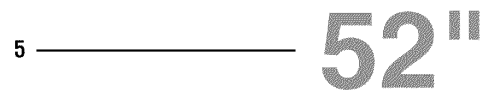
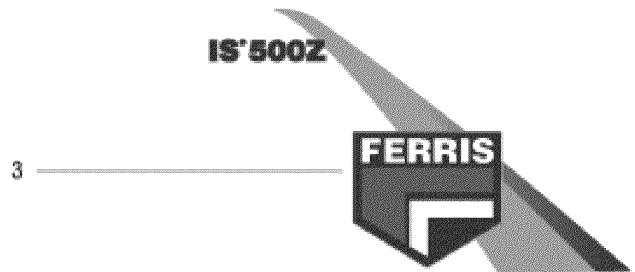
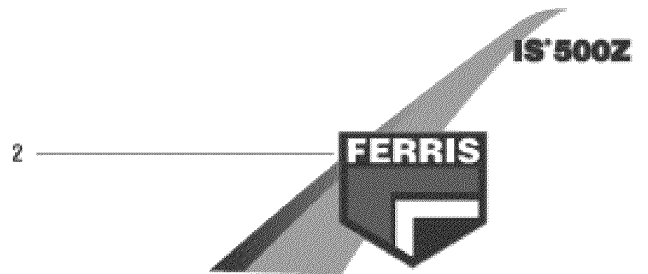
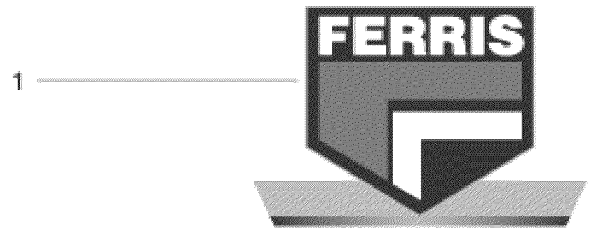
5900704 (IS500ZBV2652)
5900729 (IS500ZBV2444 AUS/NZ)
5900730 (IS500ZBV2652 AUS/NZ)
5900640 (IS500ZBV2444)

Decals - Brand & Model

NOTE: Unless noted otherwise, use the standard hardware torque specification chart.



5300785



The above parts group applies to the following Mfg. Nos.:

- 5900704 (IS500ZBV2652)
- 5900729 (IS500ZBV2444 AUS/NZ)
- 5900730 (IS500ZBV2652 AUS/NZ)
- 5900640 (IS500ZBV2444)

Decals - Brand & Model

| REF NO | PART NO. | QTY. | DESCRIPTION |
|---------------|-----------------|-------------|-----------------------------------|
| 1 | 5100344 | 1 | DECAL, FERRIS, FRONT, 8.78 X 5.81 |
| 2 | 5100897 | 1 | DECAL, BADGE, IS500Z - LH |
| 3 | 5100898 | 1 | DECAL, BADGE, IS500Z - RH |
| 4 | 5061846 | 1 | DECAL, 44" (44" Models Only) |
| 5 | 5022814 | 1 | DECAL, 52" (52" Models Only) |

Footnotes

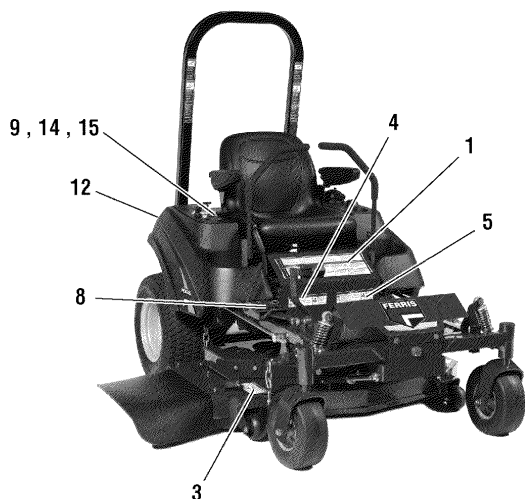
The above parts group applies to the following Mfg. Nos.:

5900704 (IS500ZBV2652)
5900729 (IS500ZBV2444 AUS/NZ)
5900730 (IS500ZBV2652 AUS/NZ)
5900640 (IS500ZBV2444)

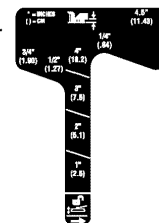
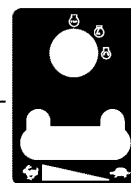
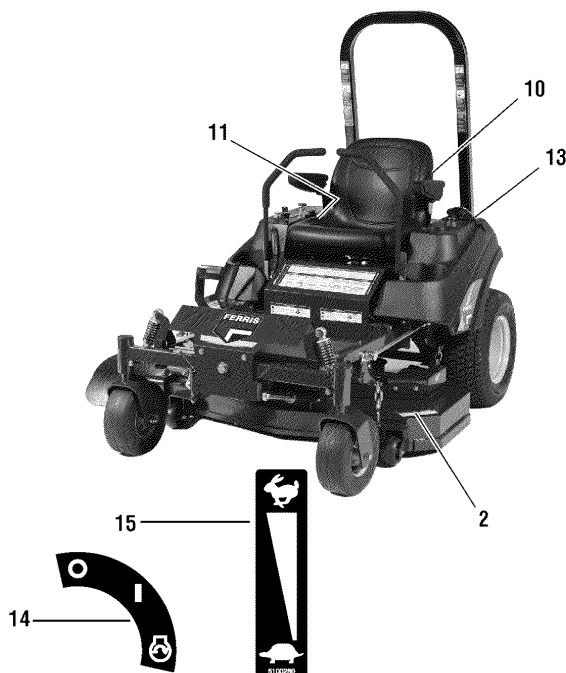
Decals - Safety & Operation

NOTE: Unless noted otherwise, use the standard hardware torque specification chart.

5300786

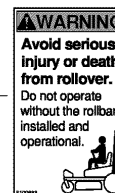


| Belts & Blades | |
|-----------------|---------|
| Tractor | |
| Pump Drive Belt | 5100923 |
| 44" Mower | |
| Deck Drive Belt | 5100924 |
| Mower Blade | 5061827 |



HYDRAULIC OIL RESERVOIR
USE SAE 20W-50 MOTOR OIL.

| Key Switch | Charge Circuit | PTO Clutch | Auxiliary |
|------------|----------------|------------|-----------|
| 20A | 20A | 20A | 20A |



The above parts group applies to the following Mfg. Nos.:

- 5900704 (IS500ZBV2652)
- 5900729 (IS500ZBV2444 AUS/NZ)
- 5900730 (IS500ZBV2652 AUS/NZ)
- 5900640 (IS500ZBV2444)

Decals - Safety & Operation

| REF NO | PART NO. | QTY. | DESCRIPTION |
|--------|----------|------|--|
| 1 | 5100097 | 1 | DECAL, MAIN SAFETY |
| 2 | 5100088 | 1 | DECAL, DANGER, MOWER |
| 3 | 5100089 | 1 | DECAL, DANGER, MOWER DISCHARGE |
| 4 | 5100708 | 1 | DECAL, DANGER, FIRE |
| 5 | 5100709 | 1 | DECAL, DANGER, FIRE (SP) |
| 6 | 1725941 | 1 | DECAL, CZT HYDRO RELEASE (Located under seat plate.) |
| 7 | 5100905 | 1 | DECAL, BELT & BLADE, IS500Z (Located under seat plate.) |
| 8 | 5100937 | 1 | DECAL, DECK HEIGHT, IS500Z |
| 9 | 5061572 | 1 | DECAL, IGNITION / THROTTLE (S/N: 2012617338 & Below) |
| 10 | 5100957 | 1 | DECAL, HYDRAULIC OIL, SAE 20W50 (Located on Hydraulic tank mount behind seat.) |
| 11 | 5046503 | 1 | DECAL, FUSE LOCATION (Located on the side of instrument control dash.) |
| 12 | 5100683 | 1 | DECAL, WARNING, ROLL BAR (Located behind RH ROPS post.) |
| 13 | 5100684 | 1 | DECAL, WARNING, ROLL BAR, SP (Located behind LH ROPS post.) |
| 14 | 5048970 | 1 | DECAL, IGNITION SWITCH (S/N: 2012617339 & Above) |
| 15 | 5100280 | 1 | DECAL, THROTTLE CONTROL (S/N: 2012617339 & Above) |

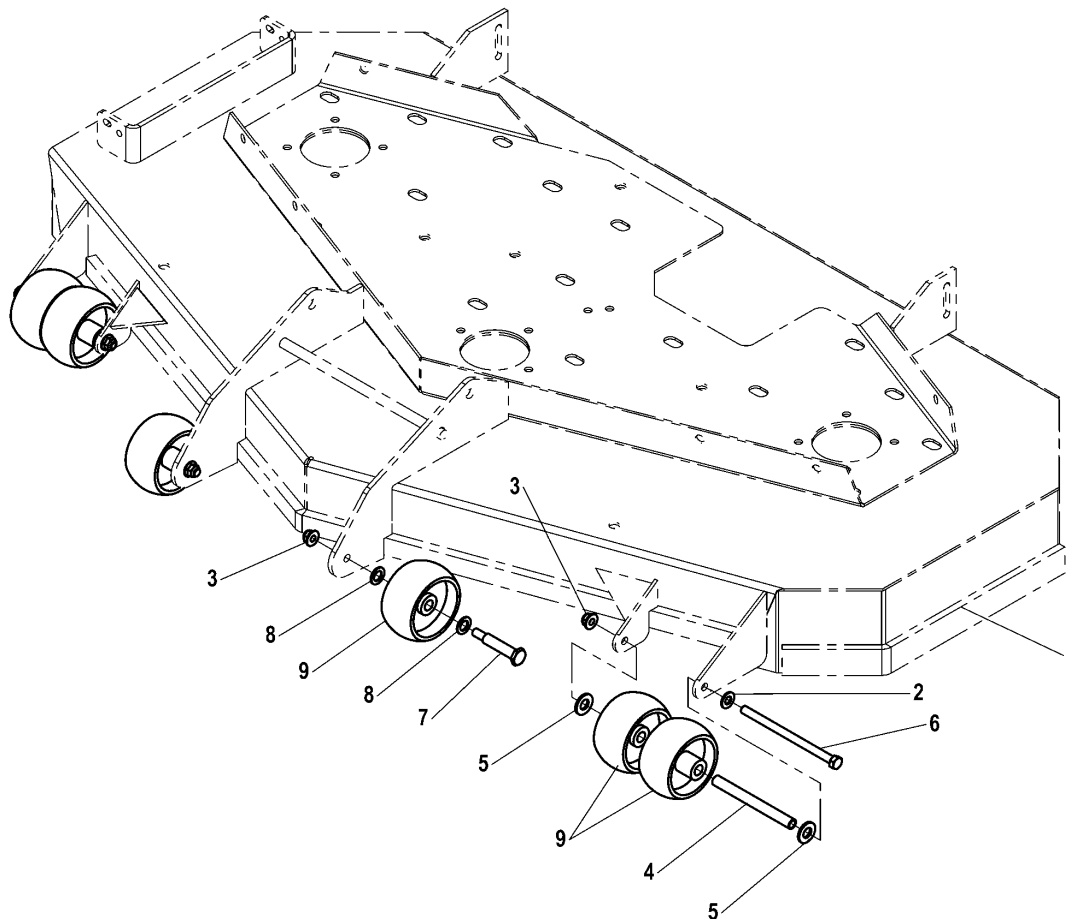
Footnotes

The above parts group applies to the following Mfg. Nos.:

5900704 (IS500ZBV2652)
5900729 (IS500ZBV2444 AUS/NZ)
5900730 (IS500ZBV2652 AUS/NZ)
5900640 (IS500ZBV2444)

52" Mower Deck - Rollers & Casters

NOTE: Unless noted otherwise,
use the standard hardware torque
specification chart.



The above parts group applies to the following Mfg. Nos.:

5900704 (IS500ZBV2652)

5900730 (IS500ZBV2652 AUS/NZ)

52" Mower Deck - Rollers & Casters

| REF NO | PART NO. | QTY. | DESCRIPTION |
|--------|------------|------|--|
| 1 | - | - | MOWER DECK (SEE HOUSING, COVERS, SPINDLES & BLADES GROUP |
| 2 | 5025156 | 2 | WASHER, 3/8" SAE |
| 3 | 5025394 | 4 | NUT, 3/8-16 Hex Nylock Flange |
| 4 | 5046586 | 2 | SPACER, .38 X .50 X 5.06 |
| 5 | 5025158 | 4 | WASHER, 1/2" SAE |
| 6 | 5025013X48 | 2 | BOLT, 3/8-16 x 6 |
| 7 | 2108765 | 2 | BOLT, REAR WHEEL |
| 8 | 1960027 | 4 | WASHER |
| 9 | 1714760 | 6 | GAUGE WHEEL |

Footnotes

The above parts group applies to the following Mfg. Nos.:

5900704 (IS500ZBV2652)

5900730 (IS500ZBV2652 AUS/NZ)

44" & 52" Mower Deck Group - Hanger Chains

| REF NO | PART NO. | QTY. | DESCRIPTION |
|--------|------------|------|---------------------------------|
| 1 | 5025038 | 2 | NUT, 1/2-13 HEX |
| 2 | 5025158 | 4 | WASHER, 1/2" SAE |
| 3 | 5025056 | 2 | NUT, 1/2-13 HEX NYLON LOCK |
| 4 | 5025013X14 | 6 | BOLT, 3/8-16 X 1-3/4" GD5 |
| 5 | 5025156 | 12 | WASHER, 3/8" SAE |
| 6 | 5025128 | 4 | NUT, 3/8-16 HEX SERRATED FLANGE |
| 7 | 5025084 | 4 | NUT, 3/8-16 HEX JAM |
| 8 | 5025096 | 4 | NUT, 3/8-16 HEX NYLON LOCK |
| 9 | 5050878X3 | 2 | CHAIN, 5/16" GD30, 3 LINKS |
| 10 | 5047503 | 2 | HANGER, FRONT DECK - 2 LINK |

Footnotes

The above parts group applies to the following Mfg. Nos.:

5900704 (IS500ZBV2652)
5900729 (IS500ZBV2444 AUS/NZ)
5900730 (IS500ZBV2652 AUS/NZ)
5900640 (IS500ZBV2444)

44" Mower Deck Group - Pulleys, Belts & Idler Arm

| REF NO | PART NO. | QTY. | DESCRIPTION |
|--------|------------|------|--|
| 1 | 5045023 | 1 | SPACER, .52 X 1.00 X .44 |
| 2 | 5050407X5 | 3 | KEY, 1/4" SQ. X 1-1/4 |
| 3 | 5047142 | 2 | SPACER, .52 X 1.25 X .70 |
| 4 | 5402555B | 1 | PLATE, SPRING ANCHOR - RED |
| 5 | 5021976 | 2 | PULLEY, IDLER 6-3/4" |
| 6 | 5043607 | 1 | SPACER, .50 X 1.00 X 2.00 |
| 7 | 5023340 | 1 | SPRING, EXTENSION, SWIVEL END |
| 8 | 5023496 | 1 | BELT, # 7-8701 141.75 |
| 9 | 5023175 | 3 | PULLEY, 5.72., 48" DECK |
| 10 | 5020095 | 1 | GREASE FITTING, 1/4-28 STRAIGHT |
| 11 | 5025056 | 2 | NUT, 1/2-13 HEX NYLON LOCK |
| 12 | 5025158 | 2 | WASHER, 1/2" SAE |
| 13 | 5025150 | 2 | WASHER, 1/2" USS |
| 14 | 5047027 | 1 | SPACER, .51 X .75 X .56 |
| 15 | 5025017X40 | 1 | BOLT, 1/2-13 X 5" GD5 YZ |
| 16 | 5025017X24 | 2 | BOLT, 1/2-13 X 3" GD5 |
| 17 | 5025332 | 3 | NUT, 1/2-13 HEX SIDE LOCK |
| 18 | 5100529 | 1 | PULLEY, IDLER, 6.75 OD X 1.62 FACE |
| 19 | 5044913 | 1 | WASHER, .53 X 1.50 X .25 |
| 20 | 5025127 | 2 | NUT, 5/16-18 HEX SERRATED FLANGE (SMALL) |
| 21 | 5045022 | 1 | SPACER, .52 X 1.00 X 3.50 |
| 22 | 5044673 | 1 | SPACER, .52 X 1.00 X .88 |
| 23 | 5025017X28 | 1 | BOLT, 1/2-13 X 3-1/2" GD5 |
| 24 | 5025017X22 | 1 | BOLT, 1/2-13 X 2-3/4" GD5 |
| 25 | 5025011X10 | 1 | BOLT, 5/16-18 X 1-1/4" GD5 YZ |
| 26 | 5401621B | 1 | WELD, IDLER ARM - RED |
| 27 | 5021541 | 2 | BUSHING, FLANGE |
| 28 | 5025405 | 3 | NUT, 3/4-16 HEX |
| 29 | 5025406 | 3 | WASHER, 3/4" BELLEVILLE |
| 30 | 5101103 | 3 | SHIELD, PULLEY BEARING |

Footnotes

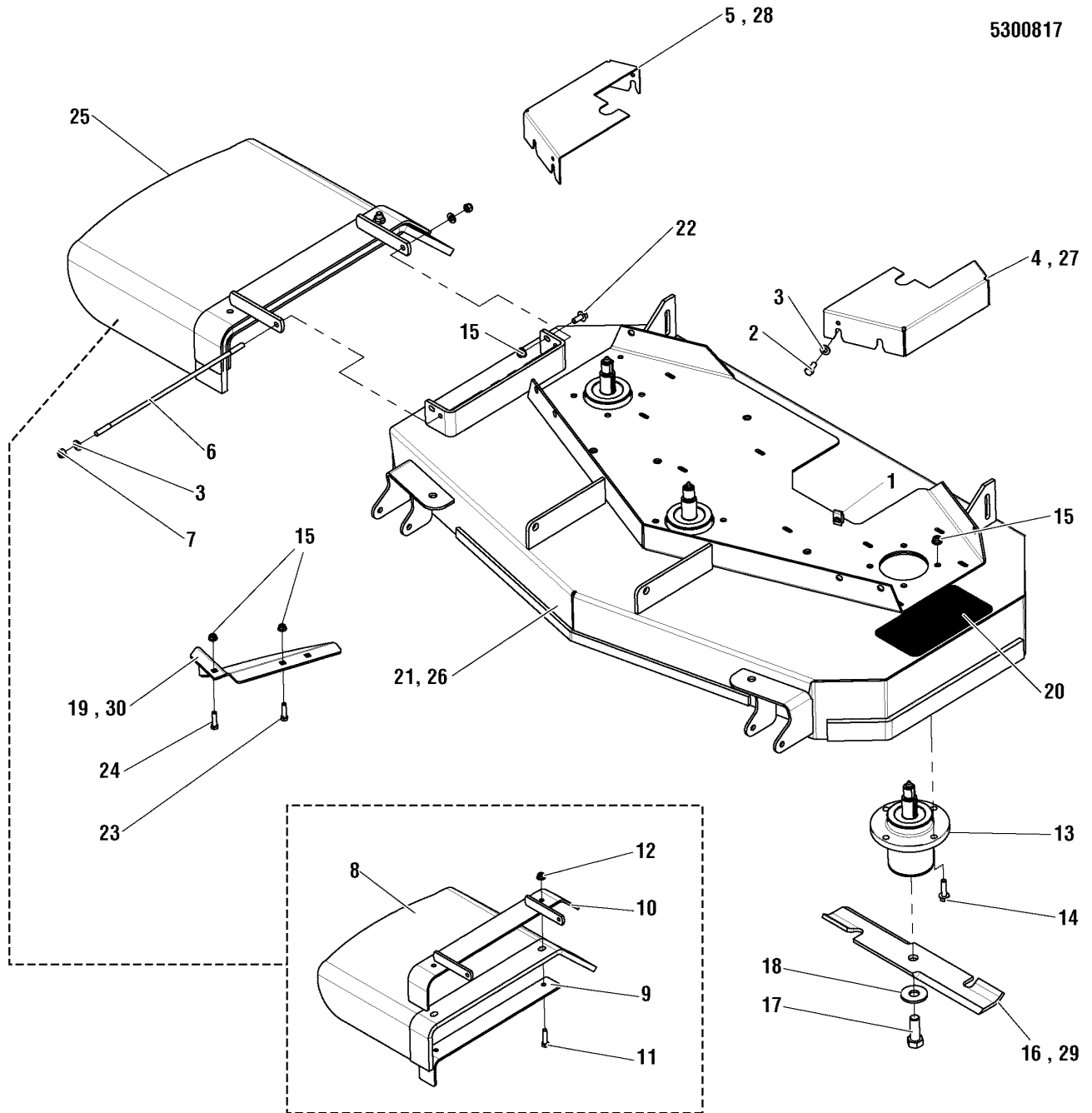
The above parts group applies to the following Mfg. Nos.:

5900729 (IS500ZBV2444 AUS/NZ)

5900640 (IS500ZBV2444)

44" & 52" Mower Deck Group - Housing, Covers, Spindles & Blades

NOTE: Unless noted otherwise,
use the standard hardware torque
specification chart.



The above parts group applies to the following Mfg. Nos.:

- 5900704 (IS500ZBV2652)
- 5900729 (IS500ZBV2444 AUS/NZ)
- 5900730 (IS500ZBV2652 AUS/NZ)
- 5900640 (IS500ZBV2444)

44" & 52" Mower Deck Group - Housing, Covers, Spindles & Blades

| REF NO | PART NO. | QTY. | DESCRIPTION |
|--------|------------|------|--|
| 1 | 5022308 | 6 | BODY CLIP, 5/16-18 X 1/2" DEEP |
| 2 | 5025011X6 | 6 | BOLT, 5/16-18 X 3/4" GD5 |
| 3 | 5025155 | 8 | WASHER, 5/16" SAE |
| 4 | 5061831B | 1 | GUARD, 44" MOWER DECK, LH (44" Mower Deck Only) |
| 5 | 5061832B | 1 | GUARD, 44" MOWER DECK, RH (44" Mower Deck Only) |
| 6 | 5042555 | 1 | ROD, BRAKE LINKAGE |
| 7 | 5025045 | 2 | NUT, 5/16-24 HEX NYLON LOCK |
| 8 | 5100842 | 1 | CHUTE, DISCHARGE, RUBBER, 44/48/52 |
| 9 | 5402362B | 1 | SUPPORT, DISCHARGE CHUTE, 44/48/52 - RED |
| 10 | 5402361B | 1 | WELD, FRAME CHUTE, 44/48/52 - RED |
| 11 | 5025013X12 | 2 | BOLT, 3/8-16 X 1-1/2" GD5 YZ |
| 12 | 5025394 | 2 | NUT, 3/8-16 HEX NYLOCK FLANGE |
| 13 | 5061095 | 3 | ASSM, SPINDLE, LOW PROFILE |
| 14 | 5023156 | 12 | BOLT, 5/16-18 X 1 1/4" FLANGE |
| 15 | 5025392 | 15 | NUT, 5/16-18 HEX NYLOCK FLANGE |
| 16 | 5061827S | 1 | BLADE, 15" (SET OF THREE) (44" Mower Deck Only) |
| 17 | 5025320X14 | 3 | BOLT, 5/8-11 X 1-3/4" GD8 |
| 18 | 5025477 | 3 | WASHER, 5/8" GRADE 8 |
| 19 | 5401283B | 1 | WELD, DISCHARGE BAFFLE, 44" - RED (44" Mower Deck Only) |
| 20 | 5101004 | 1 | SAFETY WALK, 4.00 X 7.50 |
| 21 | 5600119 | 1 | DECK SHELL W/DECALS, 44, IS500Z (44" Mower Deck Only) (Includes Safety Decals for Mower Deck) |
| 22 | 5025411 | 1 | BOLT, 5/16-18 X 3/4" FLANGE |
| 23 | 5025145X8 | 1 | BOLT, 5/16-18 X 1", CARRIAGE |
| 24 | 5025145X6 | 1 | BOLT, 5/16-18 X 3/4", CARRIAGE |
| 25 | 5600088 | 1 | KIT, DISCHARGE CHUTE, 44/48/, FERRIS RED (Includes Ref. Nos 8 - 12) |
| 26 | 5600161 | 1 | DECK SHELL W/DECALS, 52, IS500Z (5403459B) (52" Mower Deck Only) (Includes Safety Decals for Mower Deck) |
| 27 | 5061811B | 1 | GUARD, 52" DECK - LH (52" Mower Deck Only) |
| 28 | 5061810B | 1 | GUARD, 52" DECK - RH (52" Mower Deck Only) |
| 29 | 5021227S | 1 | BLADE, 18" (SET OF THREE) (52" Mower Deck Only) |
| 30 | 5403758B | 1 | WELD, DISCHARGE BAFFLE (52" Mower Deck Only) |

Footnotes

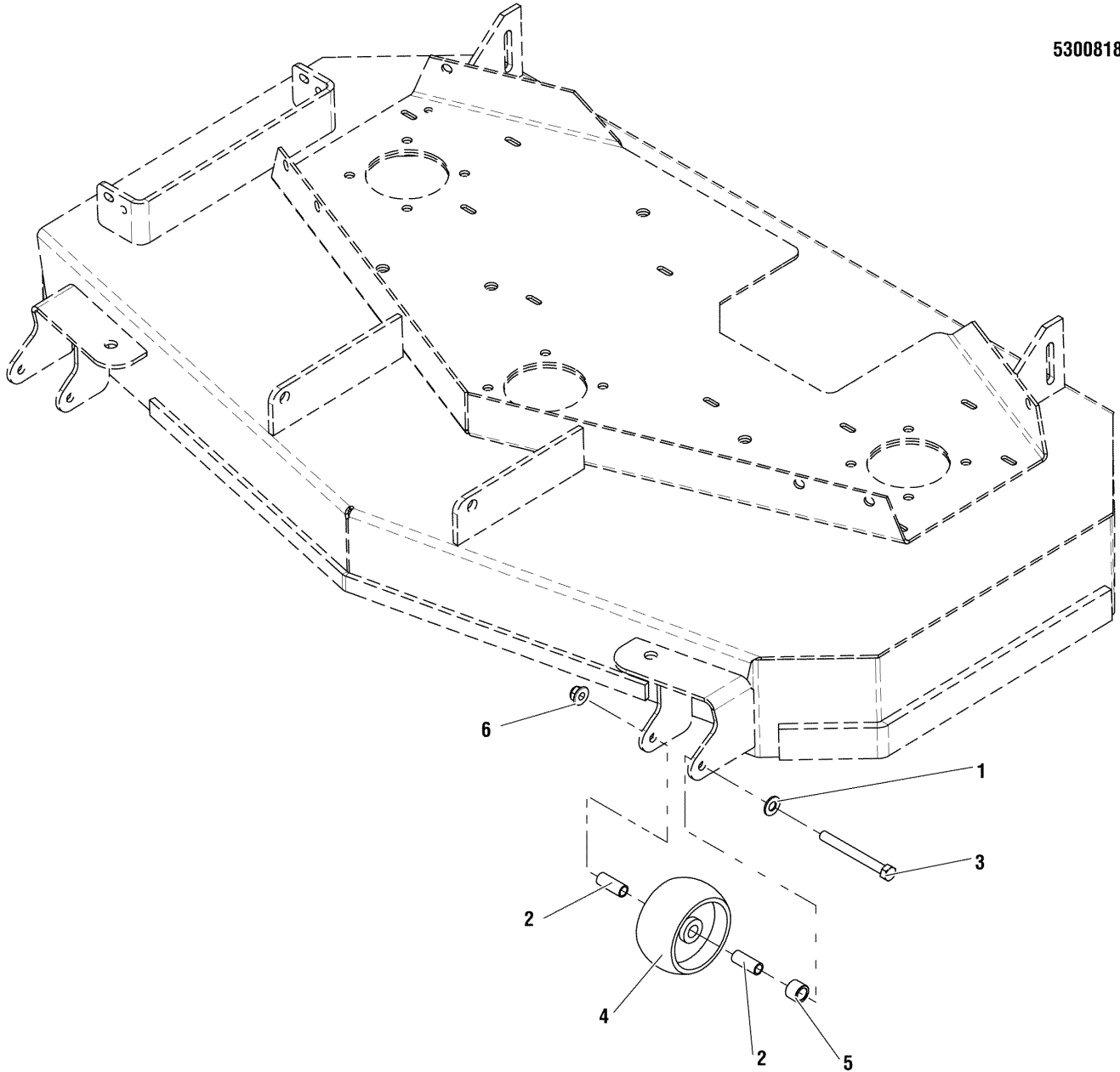
The above parts group applies to the following Mfg. Nos.:

5900704 (IS500ZBV2652)
 5900729 (IS500ZBV2444 AUS/NZ)
 5900730 (IS500ZBV2652 AUS/NZ)
 5900640 (IS500ZBV2444)

44" Mower Deck Group - Rollers and Casters

NOTE: Unless noted otherwise,
use the standard hardware torque
specification chart.

5300818



The above parts group applies to the following Mfg. Nos.:

5900729 (IS500ZBV2444 AUS/NZ)

5900640 (IS500ZBV2444)

44" Mower Deck Group - Rollers and Casters

| REF NO | PART NO. | QTY. | DESCRIPTION |
|---------------|-----------------|-------------|--|
| 1 | 5025156 | 2 | WASHER, 3/8" SAE |
| 2 | 5041931 | 4 | SPACER, .38 X .50 X 1.25 |
| 3 | 5025013X28 | 2 | BOLT, 3/8-16 X 3-1/2" GD5 YZ |
| 4 | 1714760 | 2 | WHEEL- 2.00 WIDE 3.92 DIA 0.531ID POLY |
| 5 | 5047027 | 2 | SPACER, .51 X .75 X .56 |
| 6 | 5025394 | 2 | NUT, 3/8-16 HEX NYLOCK FLANGE |

Footnotes

The above parts group applies to the following Mfg. Nos.:

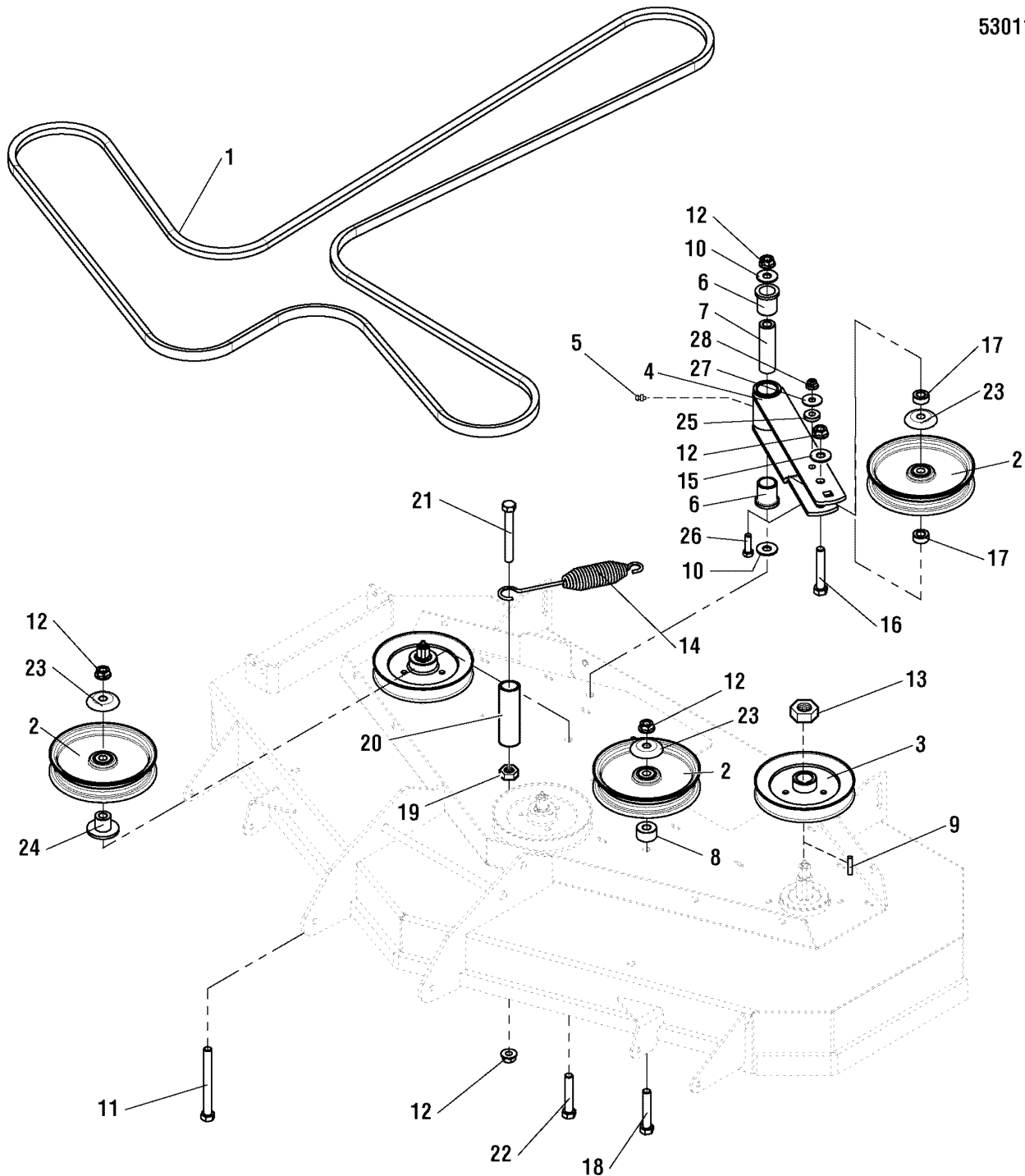
5900729 (IS500ZBV2444 AUS/NZ)

5900640 (IS500ZBV2444)

52" Mower Deck - Pulleys, Belt & Idler Arm

NOTE: Unless noted otherwise,
use the standard hardware torque
specification chart.

5301127



The above parts group applies to the following Mfg. Nos.:

5900704 (IS500ZBV2652)

5900730 (IS500ZBV2652 AUS/NZ)

52" Mower Deck - Pulleys, Belt & Idler Arm

| REF NO | PART NO. | QTY. | DESCRIPTION |
|--------|-------------|------|---------------------------------------|
| 1 | 5100003 | 1 | BELT, # 7-8728, 163.40 |
| 2 | 5021976 | 3 | PULLEY, IDLER 6-3/4 |
| 3 | 5101351 | 3 | PULLEY, 5.926 OVER BALL |
| 4 | 5403134B | 1 | WELD, IDLER ARM - RED |
| 5 | 5020095 | 1 | GREASE FITTING, 1/4-28 STRAIGHT |
| 6 | 5021541 | 2 | BUSHING, FLANGE |
| 7 | 5045022 | 1 | SPACER, .52 X 1.00 X 3.50 |
| 8 | 5047142 | 2 | SPACER, .52 X 1.25 X .70 |
| 9 | 5050407X5 | 3 | KEY, 1/4 SQ. X 1-1/4 |
| 10 | 5025150 | 2 | WASHER, 1/2 USS |
| 11 | 5025017X40 | 1 | BOLT, 1/2-13 X 5 GD5 YZ |
| 12 | 5025396 | 5 | NUT, 1/2-13 HEX NYLOCK FLANGE |
| 13 | 5025405 | 3 | NUT, 3/4-16 HEX |
| 14 | 5100632 | 1 | SPRING, EXTENSION, SWIVEL. LONG HOOK |
| 15 | 5025158 | 2 | WASHER, 1/2 SAE |
| 16 | 5025017X24 | 1 | BOLT, 1/2-13 X 3 GD5 |
| 17 | 5045023 | 2 | SPACER, .52 X 1.00 X .44 |
| 18 | 5025017X20 | 1 | BOLT, 1/2-13 X 2-1/2 GD5 |
| 19 | 5025038 | 1 | NUT, 1/2-13 HEX |
| 20 | 5050857X2P5 | 1 | HOSE, 1/2" PUSH-ON 2.50" |
| 21 | 5025017X32 | 1 | BOLT, 1/2-13 X 4 GD5 YZ |
| 22 | 5025017X26 | 1 | BOLT, 1/2-13 X 3-1/4, HEX HD, GD5, YZ |
| 23 | 5101103 | 3 | SHIELD, PULLEY BEARING |
| 24 | 5046434B | 1 | WELD, MOUNT, IDLER |
| 25 | 5044960 | 1 | SPACER, .39 X 1.00 X .25 |
| 26 | 5025013X10 | 1 | BOLT, 3/8-16 X 1-1/4 GD5 |
| 27 | 5025165 | 1 | WASHER, 3/8 FENDER |
| 28 | 5025394 | 1 | NUT, 3/8-16 HEX NYLOCK FLANGE |

Footnotes

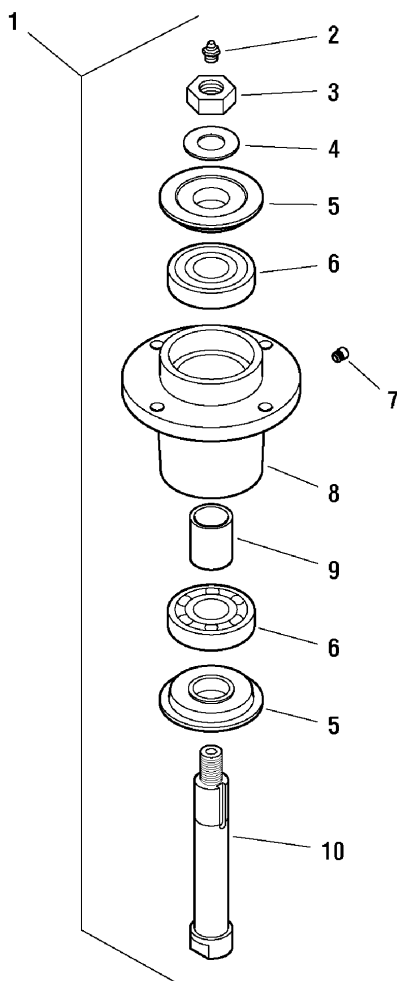
The above parts group applies to the following Mfg. Nos.:

5900704 (IS500ZBV2652)

5900730 (IS500ZBV2652 AUS/NZ)

Spindle Service Parts

NOTE: Unless noted otherwise,
use the standard hardware torque
specification chart.



The above parts group applies to the following Mfg. Nos.:

- 5900704 (IS500ZBV2652)
- 5900729 (IS500ZBV2444 AUS/NZ)
- 5900730 (IS500ZBV2652 AUS/NZ)
- 5900640 (IS500ZBV2444)

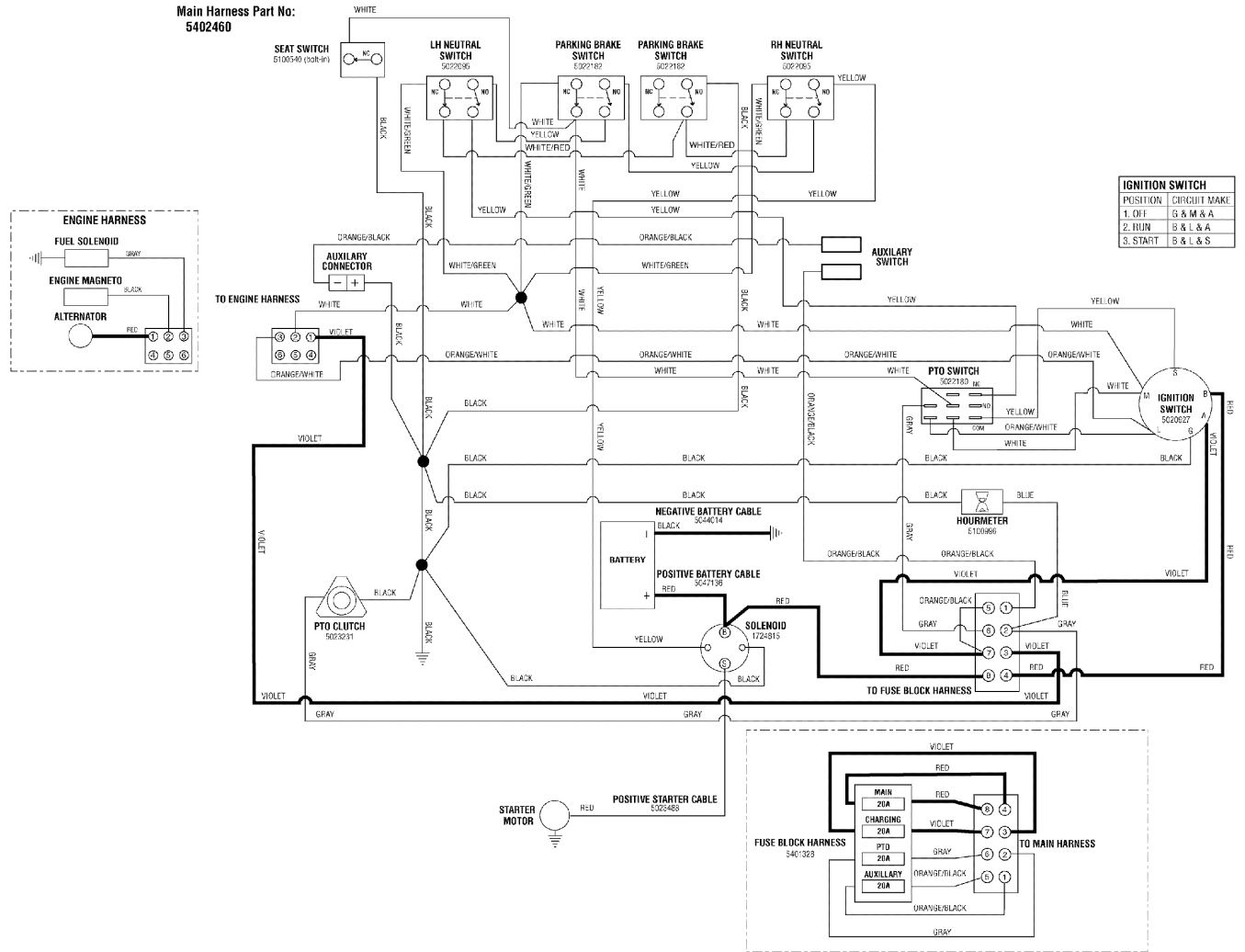
Spindle Service Parts

| REF NO | PART NO. | QTY. | DESCRIPTION |
|---------------|-----------------|-------------|--|
| 1 | 5061095 | 3 | ASSM, SPINDLE, LOW PROFILE (Includes Ref No. 2 - 10) |
| 2 | 5023329 | 3 | GREASE FITTING |
| 3 | 5025405 | 3 | NUT, 3/4-16 HEX |
| 4 | 5025406 | 3 | WASHER, 3/4" BELLEVILLE |
| 5 | 5049793 | 6 | TRASH SHIELD |
| 6 | 5023330 | 6 | BEARING |
| 7 | 5023296 | 3 | RELIEF VALVE |
| 8 | 5061097 | 3 | SPINDLE HOUSING |
| 9 | 5061099 | 3 | SPACER, 1.00 x 1.25 x 1.75 |
| 10 | 5061098 | 3 | SPINDLE SHAFT |

Footnotes

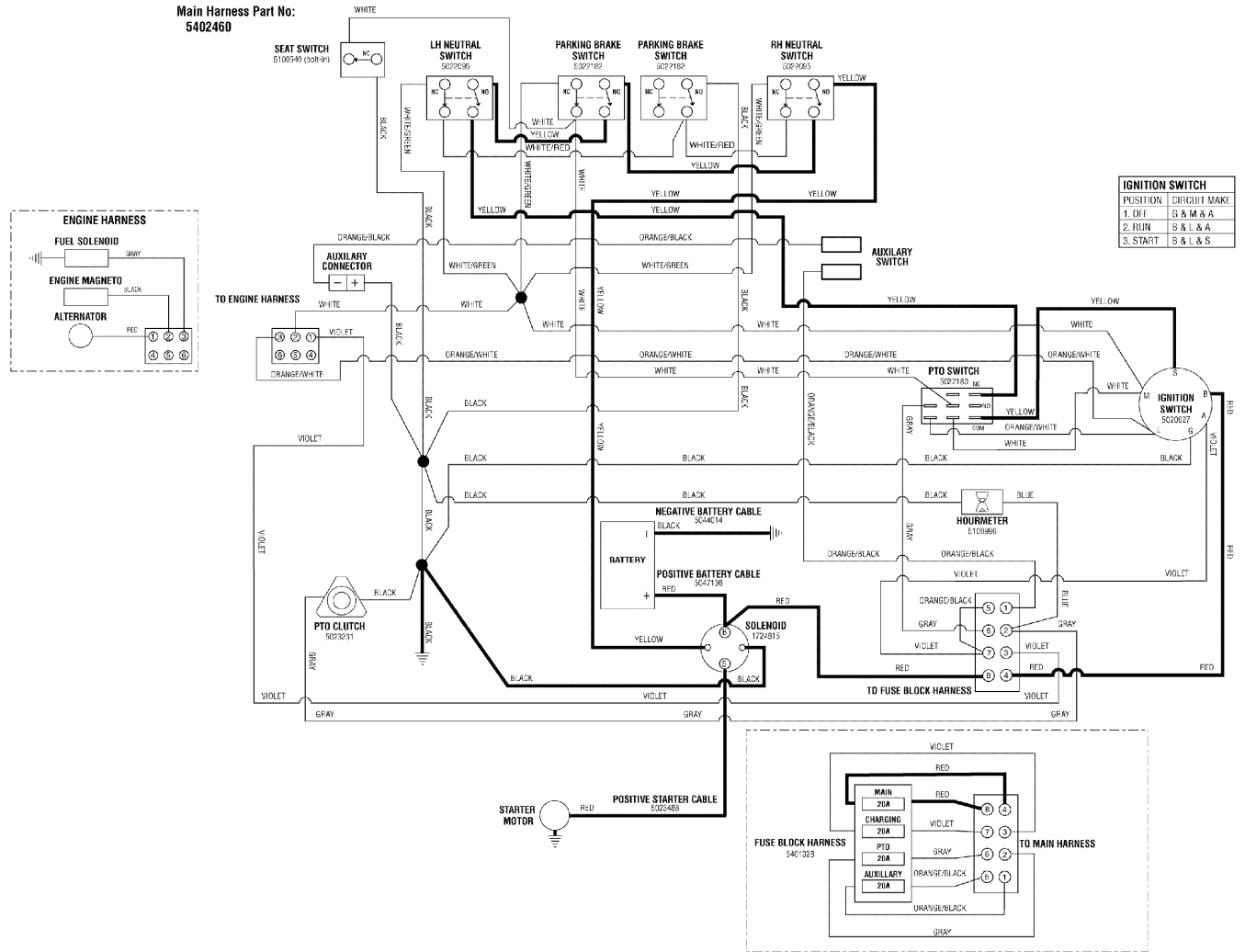
The above parts group applies to the following Mfg. Nos.:

5900704 (IS500ZBV2652)
5900729 (IS500ZBV2444 AUS/NZ)
5900730 (IS500ZBV2652 AUS/NZ)
5900640 (IS500ZBV2444)



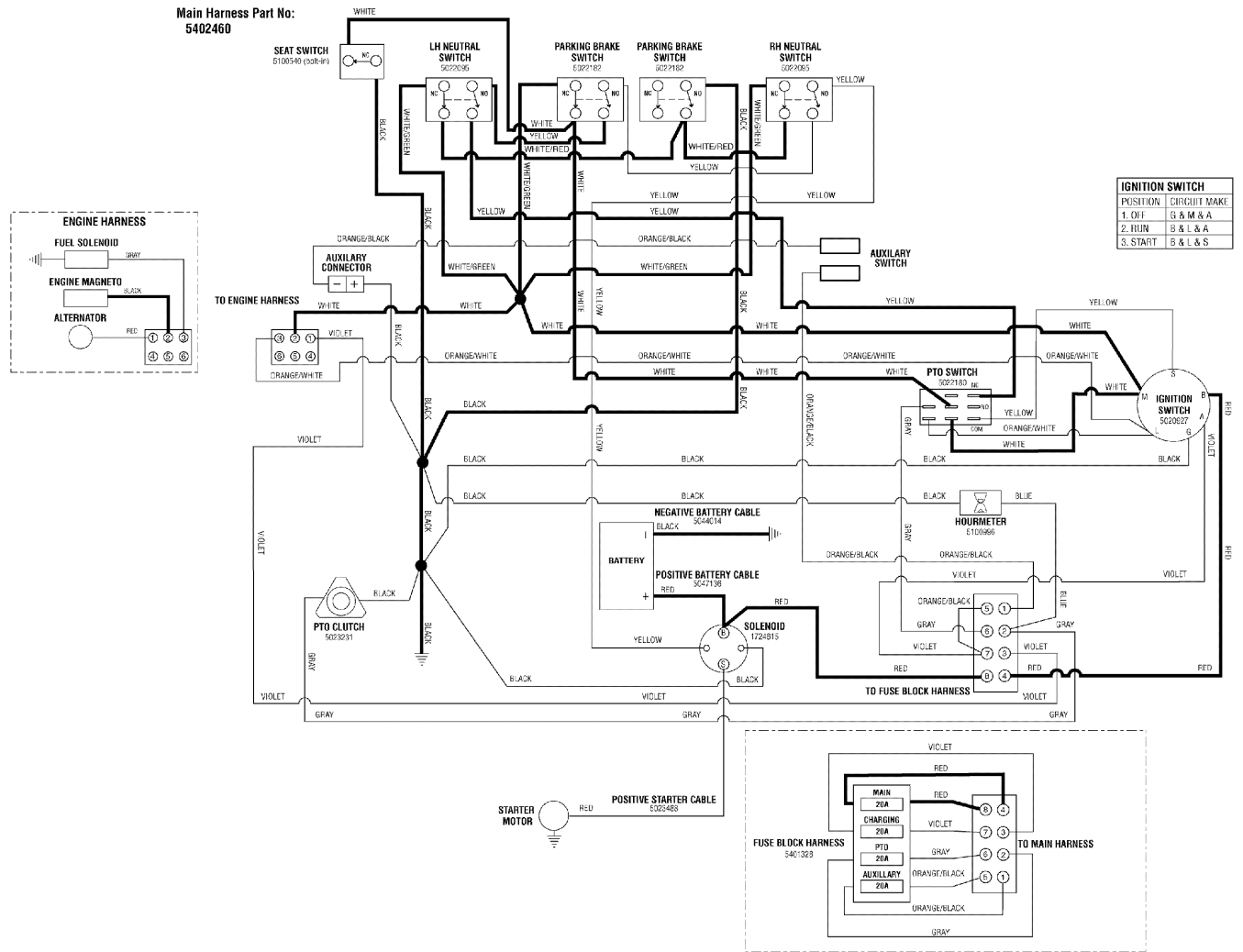
The above parts group applies to the following Mfg. Nos.:

- 5900704 (IS500ZBV2652)
- 5900729 (IS500ZBV2444 AUS/NZ)
- 5900730 (IS500ZBV2652 AUS/NZ)
- 5900640 (IS500ZBV2444)



The above parts group applies to the following Mfg. Nos.:

- 5900704 (IS500ZBV2652)
- 5900729 (IS500ZBV2444 AUS/NZ)
- 5900730 (IS500ZBV2652 AUS/NZ)
- 5900640 (IS500ZBV2444)



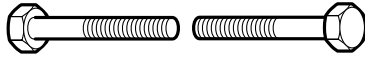
The above parts group applies to the following Mfg. Nos.:

- 5900704 (IS500ZBV2652)
- 5900729 (IS500ZBV2444 AUS/NZ)
- 5900730 (IS500ZBV2652 AUS/NZ)
- 5900640 (IS500ZBV2444)

Hardware Identification & Torque Specifications

Common Hardware Types

Hex Head Capscrew



Washer



Carriage Bolt



Lockwasher



Hex Nut

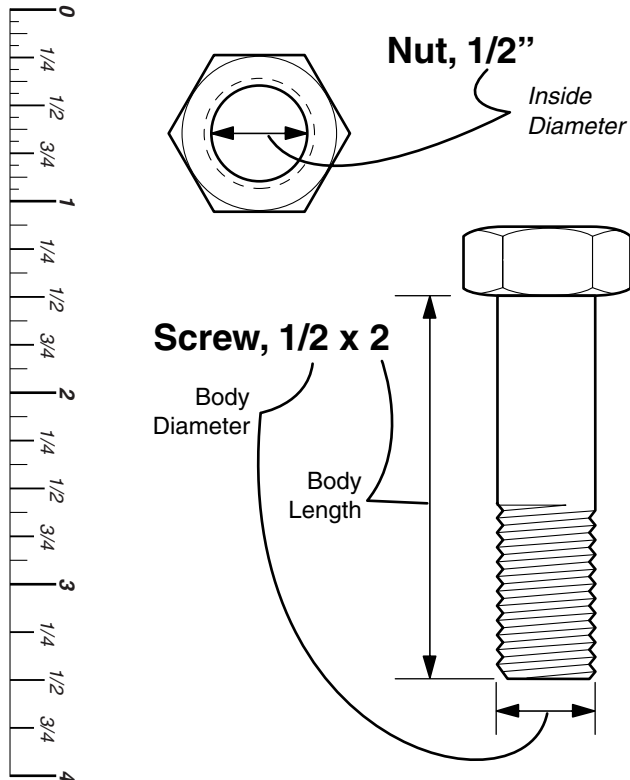


Standard Hardware Sizing

When a washer or nut is identified as $1/2''$, this is the *Nominal size*, meaning the *inside diameter* is $1/2$ inch; if a second number is present it represents the *threads per inch*

When bolt or capscrew is identified as $1/2 - 16 \times 2''$, this means the *Nominal size*, or *body diameter* is $1/2$ inch; the second number represents the *threads per inch* (16 in this example, and the final number is the *body length* of the bolt or screw (in this example 2 inches long).

The guides and ruler furnished below are designed to help you select the appropriate hardware and tools.



Torque Specification Chart

FOR STANDARD MACHINE HARDWARE (Tolerance $\pm 20\%$)

| Hardware Grade | No Marks SAE Grade 2 | | SAE Grade 5 | | SAE Grade 8 | |
|----------------|-------------------------|-------|------------------|-------|------------------|---------|
| | in/lbs ft/lbs | Nm. | in/lbs ft/lbs | Nm. | in/lbs ft/lbs | Nm. |
| 8-32 | 19 | 2.1 | 30 | 3.4 | 41 | 4.6 |
| 8-36 | 20 | 2.3 | 31 | 3.5 | 43 | 4.9 |
| 10-24 | 27 | 3.1 | 43 | 4.9 | 60 | 6.8 |
| 10-32 | 31 | 3.5 | 49 | 5.5 | 68 | 7.7 |
| 1/4-20 | 66 | 7.6 | 8 | 10.9 | 12 | 16.3 |
| 1/4-28 | 76 | 8.6 | 10 | 13.6 | 14 | 19.0 |
| 5/16-18 | 11 | 15.0 | 17 | 23.1 | 25 | 34.0 |
| 5/16-24 | 12 | 16.3 | 19 | 25.8 | 27 | 34.0 |
| 3/8-16 | 20 | 27.2 | 30 | 40.8 | 45 | 61.2 |
| 3/8-24 | 23 | 31.3 | 35 | 47.6 | 50 | 68.0 |
| 7/16-14 | 30 | 40.8 | 50 | 68.0 | 70 | 95.2 |
| 7/16-20 | 35 | 47.6 | 55 | 74.8 | 80 | 108.8 |
| 1/2-13 | 50 | 68.0 | 75 | 102.0 | 110 | 149.6 |
| 1/2-20 | 55 | 74.8 | 90 | 122.4 | 120 | 163.2 |
| 9/16-12 | 65 | 88.4 | 110 | 149.6 | 150 | 204.0 |
| 9/16-18 | 75 | 102.0 | 120 | 163.2 | 170 | 231.2 |
| 5/8-11 | 90 | 122.4 | 150 | 204.0 | 220 | 299.2 |
| 5/8-18 | 100 | 136 | 180 | 244.8 | 240 | 326.4 |
| 3/4-10 | 160 | 217.6 | 260 | 353.6 | 386 | 525.0 |
| 3/4-16 | 180 | 244.8 | 300 | 408.0 | 420 | 571.2 |
| 7/8-9 | 140 | 190.4 | 400 | 544.0 | 600 | 816.0 |
| 7/8-14 | 155 | 210.8 | 440 | 598.4 | 660 | 897.6 |
| 1-8 | 220 | 299.2 | 580 | 788.8 | 900 | 1,244.0 |
| 1-12 | 240 | 326.4 | 640 | 870.4 | 1,000 | 1,360.0 |

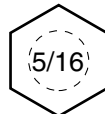
NOTES

- These torque values are to be used for all hardware excluding: locknuts, self-tapping screws, thread forming screws, sheet metal screws and socket head setscrews.
- Recommended seating torque values for locknuts:
 - for prevailing torque locknuts - use 65% of grade 5 torques.
 - for flange whizlock nuts and screws - use 135% of grade 5 torques.
- Unless otherwise noted on assembly drawings, all torque values must meet this specification.

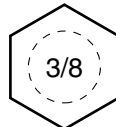
Wrench & Fastener Size Guide



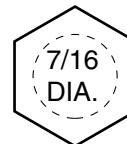
$1/4''$ Bolt or Nut
Wrench— $7/16''$



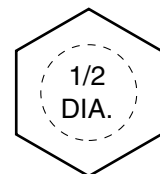
$5/16''$ Bolt or Nut
Wrench— $1/2''$



$3/8''$ Bolt or Nut
Wrench— $9/16''$



$7/16''$ Bolt or Nut
Wrench (Bolt)— $5/8''$
Wrench (Nut)— $11/16''$



$1/2''$ Bolt or Nut
Wrench— $3/4''$

Parts Manual IS500Z Series

Zero-Turn Riding Mower

IT IS THE POLICY OF FERRIS INDUSTRIES TO IMPROVE ITS PRODUCTS WHENEVER IT IS POSSIBLE AND PRACTICAL TO DO SO. WE RESERVE THE RIGHT TO MAKE CHANGES OR ADD IMPROVEMENTS AT ANY TIME WITHOUT INCURRING ANY OBLIGATION TO MAKE SUCH CHANGES ON PRODUCTS MANUFACTURED

Briggs and Stratton Yard Power Products Group

5375 North Main Street
Munnsville, NY 13409 USA
800-933-6175

www.ferrisindustries.com

© Copyright 2007 Briggs and Stratton Corporation
All Rights Reserved. Printed In USA.