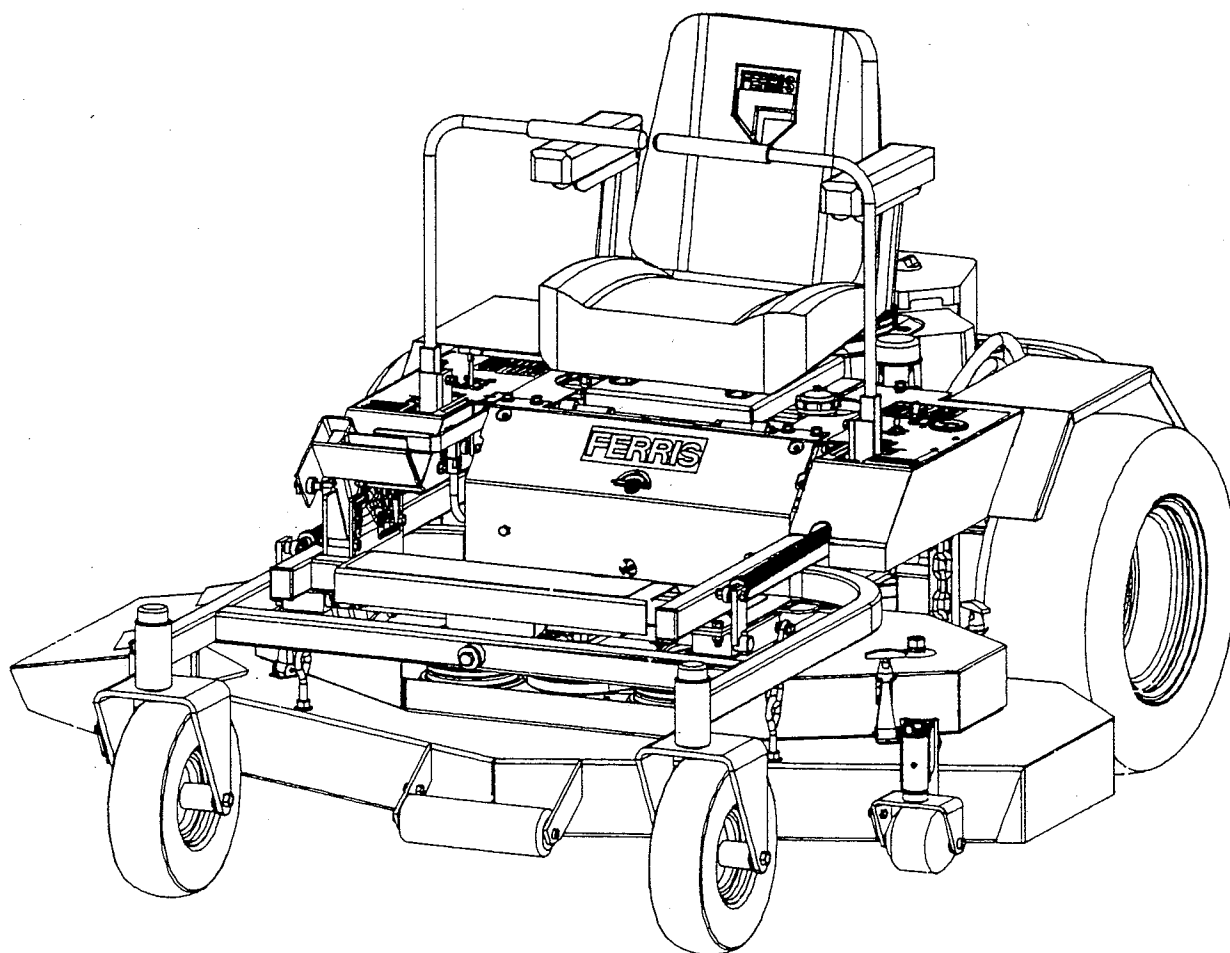


FERRIS

ILLUSTRATED PARTS LIST

Pro Cut Z Commercial Mowers



MODELS:

PCZ22K

PCZ25K

CUTTER DECKS:

PCZ52

PCZ61

Ferris Industries Inc.

7-13 Front Street

P.O. Box 910

Vernon, NY 13476

Manual No. 22115

Printed in USA

February 1998

Serial No. 501 & up

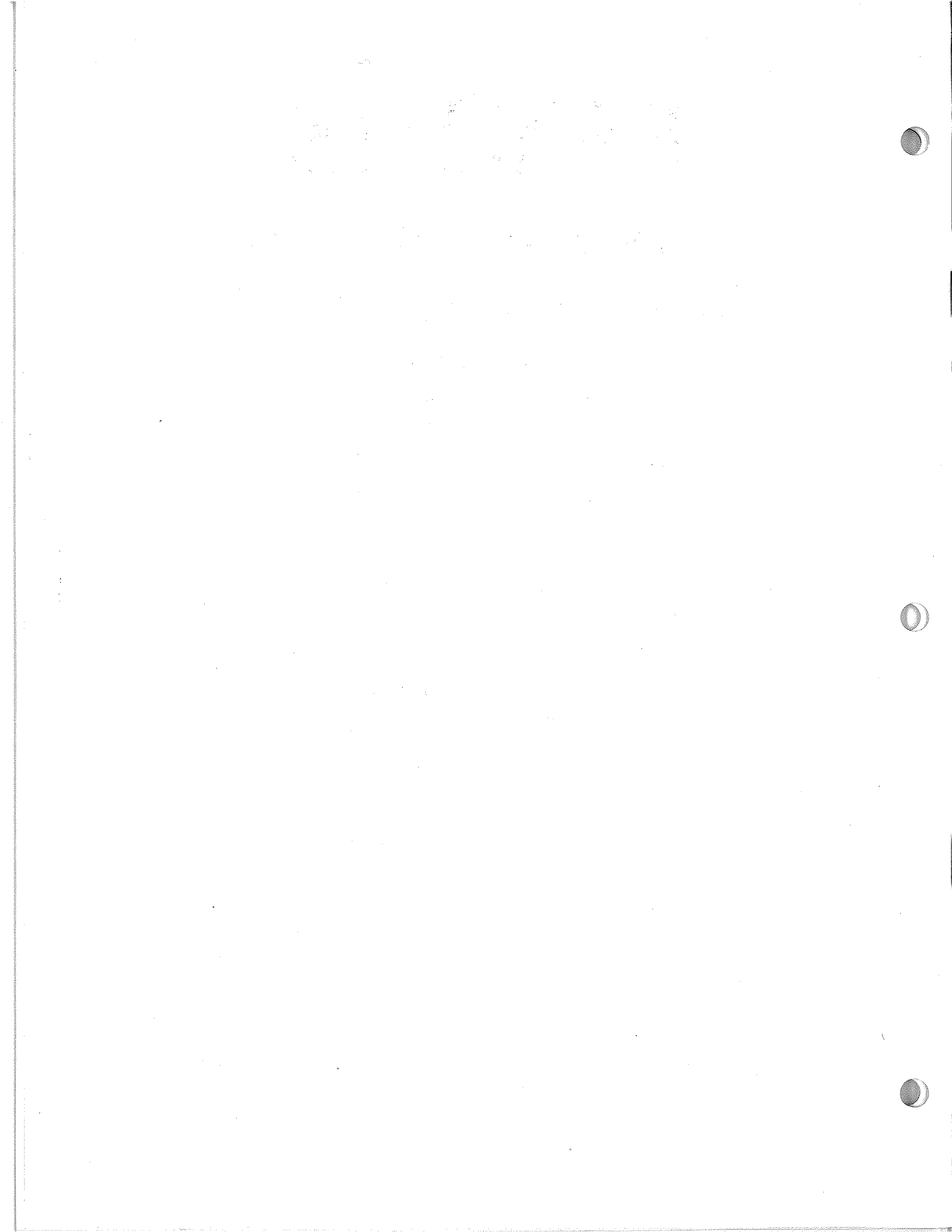



TABLE OF CONTENTS

	Page
Main Frame Assembly.....	1-2
Hydro Control & Brake Assembly.....	3-4
Hydraulic System Assembly.....	5-6
Hydraulic Pump Drive Assembly.....	7-8
Deck Lift Assembly.....	9-10
52" Cutter Deck Assembly.....	11-12
61" Cutter Deck Assembly.....	13-14
Electrical Layout & Schematic.....	15-16
Electrical Layout & Schematic SN: 701 & up...	17-18
Replacement Decals.....	19-20

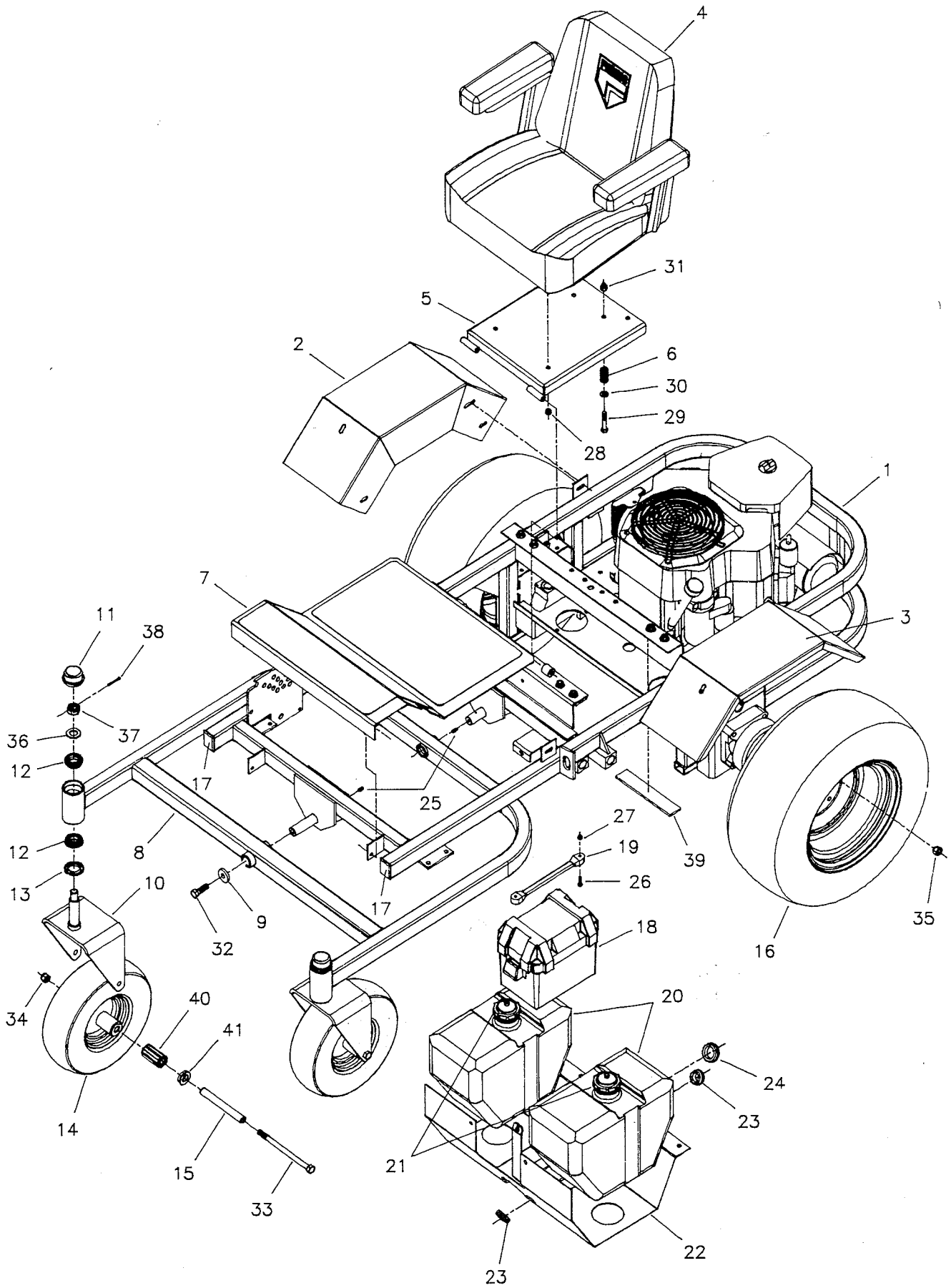
FERRIS 	MODEL SERIAL
<hr/>	
FERRIS INDUSTRIES, INC. VERNON, N.Y. 13476 MADE IN U.S.A.	

NOTE:

To insure that the correct parts are ordered and shipped for your machine, please be sure to use the parts book and pages that specifically cover your machine. Whenever in doubt, include the model and serial number of your machine along with the part numbers. For future reference, record the model and serial number of your machine in the space provided above.

WARNING: THOROUGHLY READ OPERATOR'S MANUAL AND COMPLETELY ASSEMBLE ALL LOOSE PARTS BEFORE OPERATING MOWER. DO NOT OPERATE YOUR MOWER UNLESS ALL PARTS ARE ATTACHED AND IN GOOD WORKING ORDER. KEEP YOUR MOWER IN GOOD REPAIR AT ALL TIMES.

Main Frame Assembly



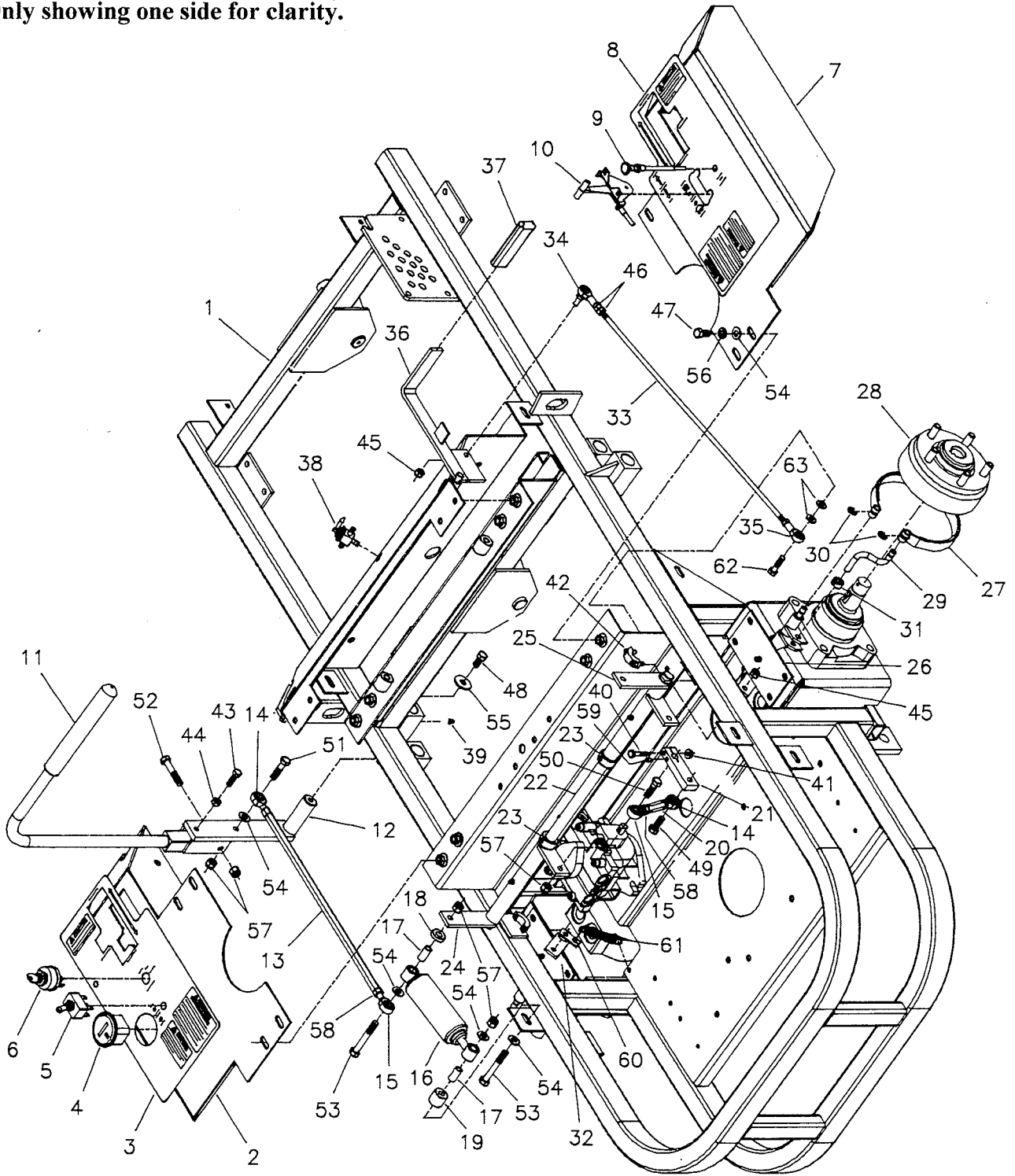
Main Frame Assembly

REF. NO.	PART NO.	DESCRIPTION
1	1544877	Frame, Main
2	1545093	Fender, Right
3	1545094	Fender, Left
4	1522031	Seat
5	1544982	Seat Plate
6	1521102	Spring, Compression
7	1560013	Floor Plate Assembly
-	1544873	Floor Safety Walk
8	1544908	Frame, Front Pivot
9	1544913	Washer, Frame Retaining
10	1544914	Yoke, Caster
11	1521073	Cap
12	1520884	Bearing, Taper Roller
13	1521072	Seal, Grease
14	1522029	Tire, Caster (complete)
15	1522100	Shaft, Caster Axle
16	1521353	Tire & Rim Assembly
17	1522098	Cap, Plastic
18	1521666	Box, Battery
19	1521670	Strap, Rubber
20	1521437	Fuel Tank, 4 Gallon
21	1521468	Cap, Fuel Tank
22	1544938	Mount, Fuel Tank
23	1521379	Grommet, 7/8"
24	1521397	Grommet, 1-1/4"
25	1521728	Grease Fitting
26	1525270	Machine Screw, #10-24 x 1"
27	1525271	Nut, #10-24 Hex Nylon Lock
28	8825057	Nut, 5/16-18 Hex Nylon Lock
29	8825013-18	Bolt, 3/8-16 x 2-1/4" GD.5
30	8825156	Washer, 3/8" SAE Flat
31	8825096	Nut, 3/8-16 Hex Nylon Lock
32	8825018-10	Bolt, 1/2-20 x 1-1/4" GD.5
33	1525017-60	Bolt, 1/2-13 x 7-1/2" GD.5
34	1525056	Nut, 1/2-13 Hex Nylon Lock
35	8820601	Nut, 1/2-13 Lug
36	1525160	Washer, 3/4" SAE Flat
37	1525104	Nut, 3/4-16 Hex Slotted
38	1525203-10	Pin, 1/8" x 1-1/4" Cotter
39	1521877	Mount Pad, Rubber
40	1521042	Bearing, Roller (2 per caster)
41	1521043	Retainer, Bearing (2 per caster)
42	1550831-24	Fuel Line, 24" Long, tank to valve (not shown)
43	1550831-36	Fuel Line, 36" Long, valve to engine (not shown)

Hydro Control & Brake Assembly

Note:

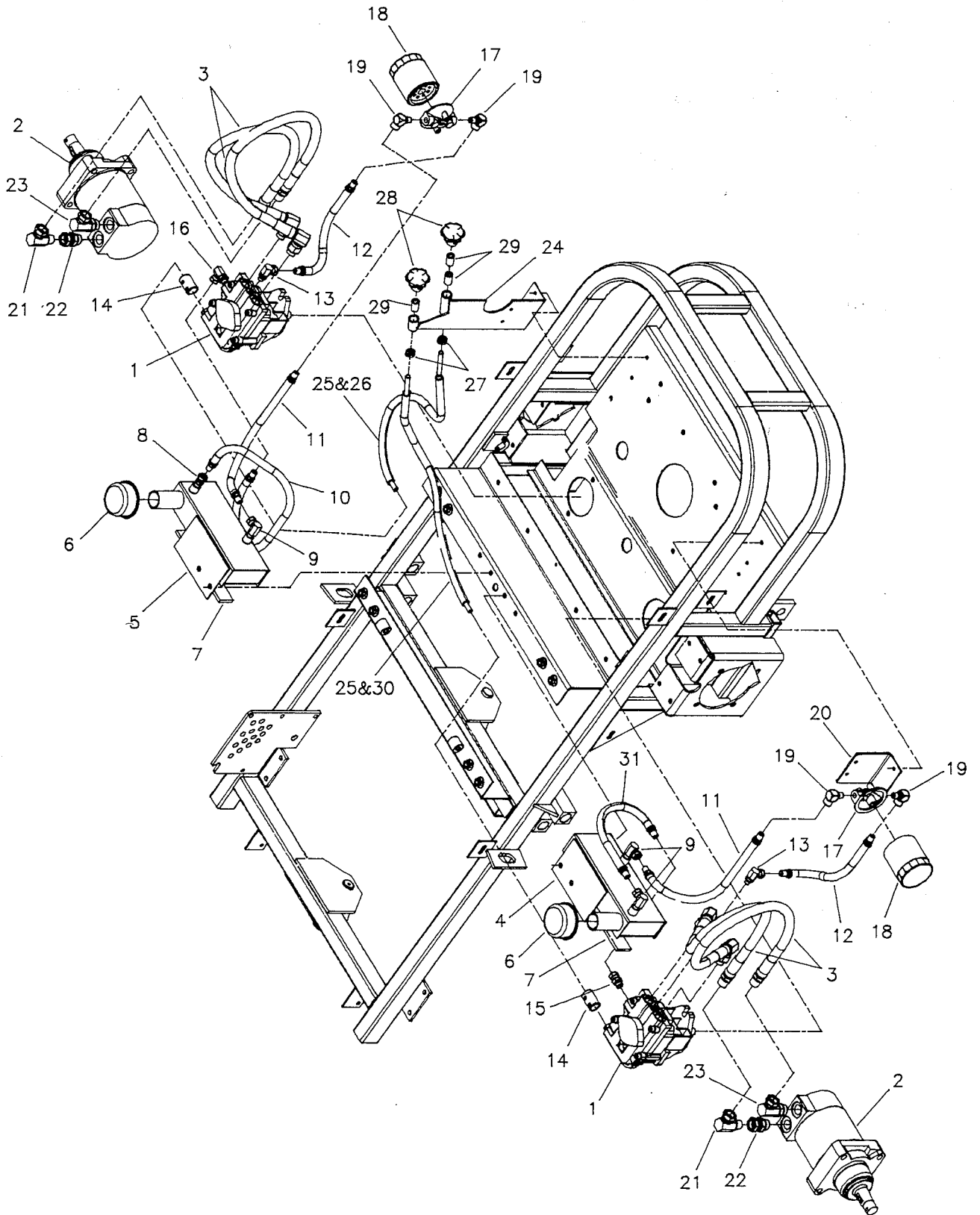
All control & brake components are symmetrical.
Only showing one side for clarity.



Hydro Control & Brake Assembly

REF. NO.	PART NO.	DESCRIPTION	REF. NO.	PART NO.	DESCRIPTION
1	-----	Frame, Main	36	1544941	Panel, Brake
2	1544964	Panel, Control-Left	37	8825510	Grip, Foam
—	1545155	Panel, Control-Left (SN:701 & up)	38	1522030	Valve, Fuel Shut Off
3	1522065	Decal, Control Panel-Left	39	1521728	Grease Fitting
4	1520060	Hour Meter	40	8825010-12	Bolt, 1/4-20 x 1-1/2" GD.5
5	1521545	Switch, Electric Clutch	41	8825126	Nut, 1/4-20 Serrated Flange
—	1522180	Switch, Blade Engagement (SN:701 & up)	42	8820594	Collar, 3/4" Double Split
6	1520927	Switch, Ignition	43	8825011-8	Bolt, 5/16-18 x 1" GD.5
7	1544970	Panel, Control-Right	44	8825032	Nut, 5/16-18 Hex
8	1522064	Decal, Control Panel-Right	45	8825057	Nut, 5/16-18 Hex Nylon Lock
9	1521663	Cable, Choke	46	8825033	Nut, 5/16-24 Hex
10	1520811	Cable, Throttle	47	8825013-6	Bolt, 3/8-16 x 3/4" GD.5
11	1560016	Control Handle Assembly	48	1525199-6	Bolt, 3/8-16 x 3/4" GD.5 w/ patch
—	1522068	Grip, Foam	49	8825013-8	Bolt, 3/8-16 x 1" GD.5
12	1544934	Lever, Control	50	8825013-10	Bolt, 3/8-16 x 1-1/4" GD.5
13	1544958	Rod, Hydro Control	51	8825013-12	Bolt, 3/8-16 x 1-1/2" GD.5
14	1522047	Ball Joint, 3/8-24 LH Male	52	1525013-16	Bolt, 3/8-16 x 2" GD.5
15	1521124	Ball Joint, 3/8-24 Male	53	1525013-22	Bolt, 3/8-16 x 2-3/4" GD.5
16	1521687	Shock Absorber	54	8825156	Washer, 3/8" SAE Flat
17	1544959	Mount, Shock	55	1525165	Washer, 3/8" Fender
18	1544960	Spacer, Shock Mount-Short	56	8825171	Washer, 3/8" Lock
19	1544961	Spacer, Shock Mount-Long	57	8825096	Nut, 3/8-16 Hex Nylon Lock
20	1544957	Link, Control Arm	58	8825035	Nut, 3/8-24 Hex
21	1544956	Arm, Pump Control	59	1525283-3	Set Screw, 1/4-20 x 3/8" Cone Point
22	1544950	Shaft, Control Pivot	60	1545127	Spacer, Spring (SN 301 & up)
23	8810116	Collar, 3/4" Set	61	8820639	Spring, Extension (SN 301 & up)
24	1544952	Control, Hydro-Left	62	1525011-10	Bolt, 5/16-18 x 1-1/4" GD.5
25	1544951	Control, Hydro-Right	63	1525155	Washer, 5/16" SAE Flat
26	1544918	Brake Pivot-Right			
27	1522099	Brake Band			
28	1522041	Hub, Studded w/ Brake Drum			
29	1544926	Link, Brake Band			
30	1522049	Ring, E-Retaining			
31	8810546	Collar, 3/8" Set			
32	1544919	Brake Pivot-Left			
33	1544949	Rod, Brake Actuator			
34	1521170	Ball Joint, 5/16-24 Female-Studded			
35	1522048	Ball Joint, 5/16-24 LH Female			

Hydraulic System Assembly

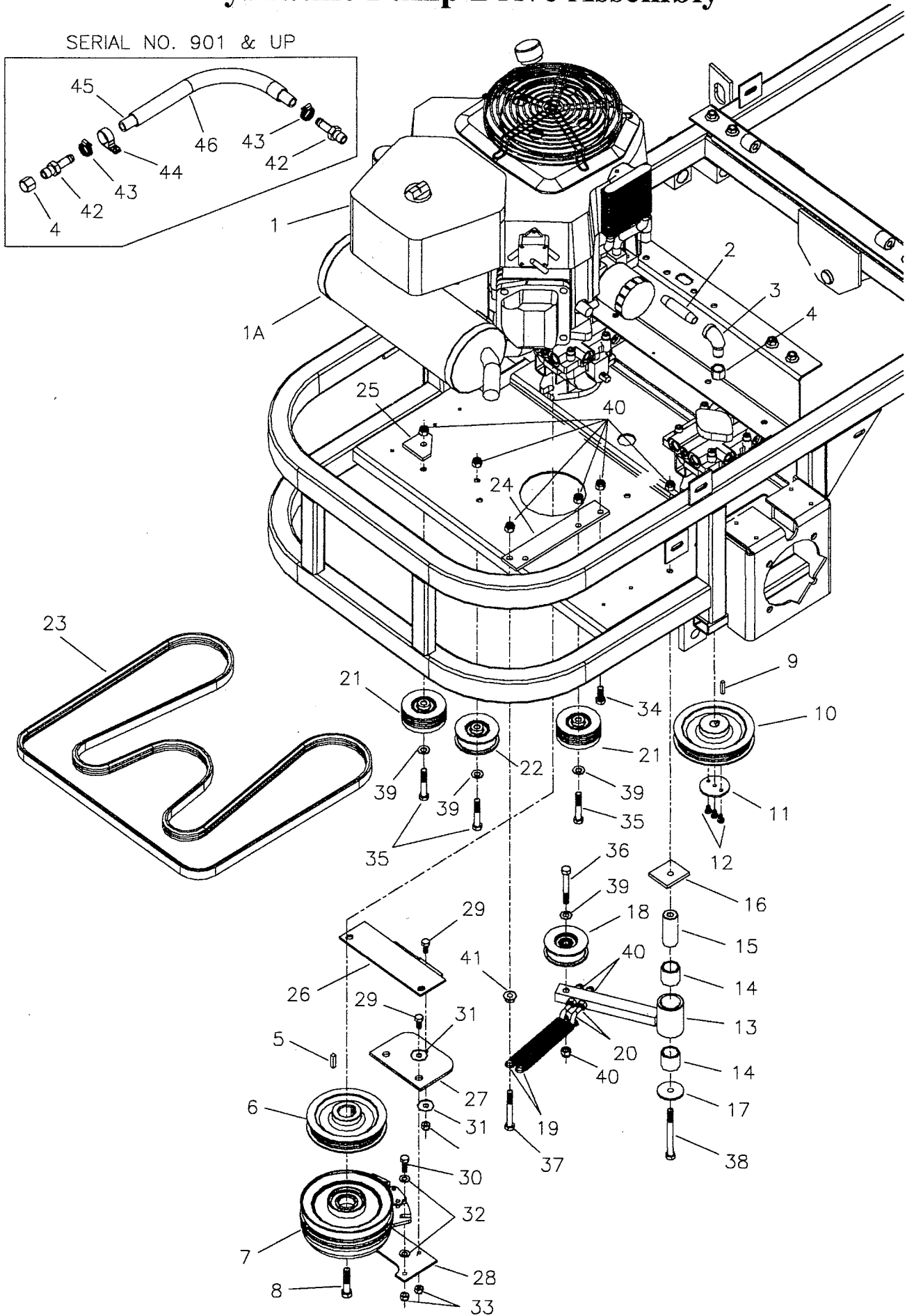
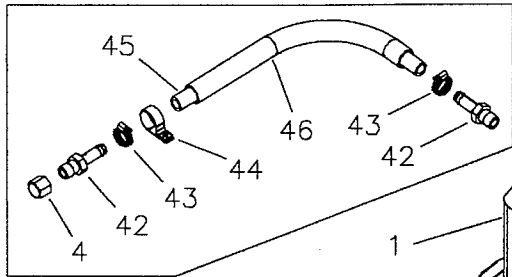


Hydraulic System Assembly

REF. NO.	PART NO.	DESCRIPTION
1	1522033	Pump, Hydraulic
2	1522042	Wheel Motor
3	1522046	Hydraulic Hose Assembly
4	1544974	Reservoir, Oil-Left
5	1544973	Reservoir, Oil-Right
6	1521871	Breather
7	1521877	Mount Pad, Rubber
8	1522109	Fitting, 1/4" NPT Straight Swivel
9	1522108	Fitting, 1/4" NPT 90 Deg. Swivel
10	1560024	Hydro Hose Assembly-24"
11	1560023	Hydro Hose Assembly-13"
12	1560025	Hydro Hose Assembly-11"
13	1521615	Fitting, 7/16" O-Ring 90 Deg. Swivel
14	1545057	Collar, Dump Valve
15	1522053	Fitting, 9/16" O-Ring Straight Swivel
16	1522052	Fitting, 9/16" O-Ring 90 Deg. Swivel
17	1522027	Filter Head
18	1522028	Filter
19	1522055	Fitting, 1/4" M-1/4" F, 90 Deg.
20	1544981	Mount, Filter -Left
21	1521132	Fitting, 1/2" 90 Deg. Swivel
22	1521166	Fitting, 7/8" O-Ring Straight Swivel
23	1521131	Fitting, 7/8" O-Ring 90 Deg. Swivel
24	1545076	Mount, Filter-Right
25	1522102	Shaft, 3/8" Flexible, 24" Long
26	1545080	Housing, Flex Shaft
27	8810546	Collar, 3/8" Set
28	1545081	Knob, Dump Valve
29	1522114	Bushing, Brass
30	1545089	Housing, Flex Shaft-Long
31	1560038	Hydro Hose Assembly-14"

Hydraulic Pump Drive Assembly

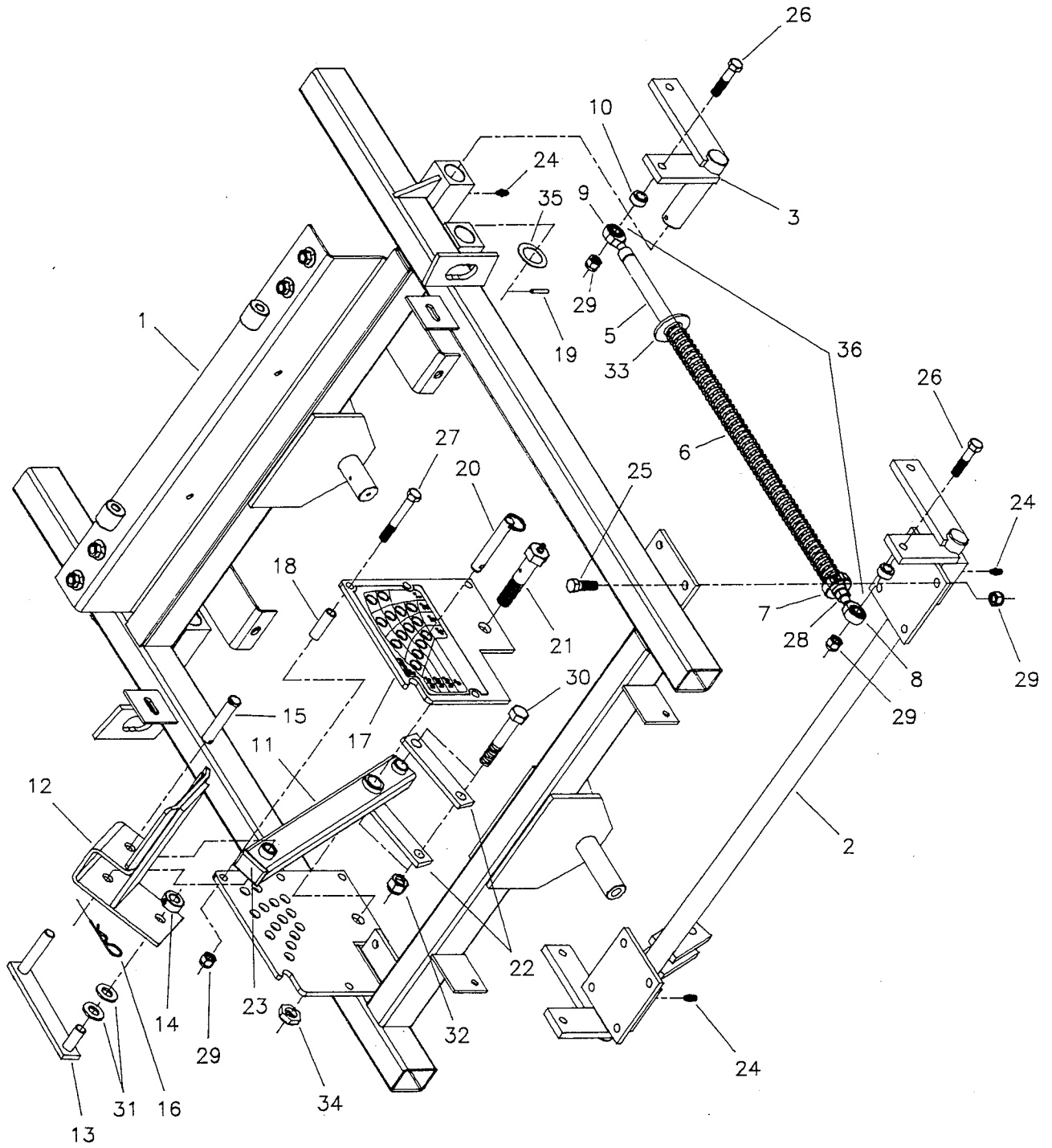
SERIAL NO. 901 & UP



Hydraulic Pump Drive Assembly

REF. NO.	PART NO.	DESCRIPTION	REF. NO.	PART NO.	DESCRIPTION
1	1522034	Engine, 22hp Kohler	29	8825011-6	Bolt, 5/16-18 x 3/4" GD.5
--	1522069	Engine, 25hp Kohler	30	8825011-8	Bolt, 5/16-18 x 1" GD.5
1A	1522161	Muffler, Kohler	31	8825164	Washer, 5/16" Fender
2	1521290	Nipple, 3/8" NPT x 3"	32	8825155	Washer, 5/16" SAE Flat
3	1522096	Street-L, 3/8" NPT	33	8825057	Nut, 5/16-18 Hex Nylon Lock
4	1521466	Cap, 3/8" NPT	34	8825013-8	Bolt, 3/8-16 x 1" GD.5
5	1550407-1	Key, 1/4" Sq. x 1"	35	8825013-18	Bolt, 3/8-16 x 2-1/4" GD.5
6	1522154	Pulley, Crank Shaft	36	1525013-22	Bolt, 3/8-16 x 2-3/4" GD.5
7	1522040	Clutch, Electric	37	8825013-24	Bolt, 3/8-16 x 3" GD.5
8	1544853	Crank Shaft Bolt	38	8825013-32	Bolt, 3/8-16 x 4" GD.5
9	1522156	Key, 5MM Sq. x 25MM	39	8825156	Washer, 3/8" SAE Flat
10	1522155	Pulley, Pump Drive	40	8825096	Nut, 3/8-16 Hex Nylon Lock
11	1545143	Washer, Pulley Retaining	41	8825128	Nut, 3/8-16 Serrated Flange
12	1525248	Bolt, M6 x 1.00 x 10MM GD. 8.8	42	1521372	Fitting, 3/8NPT-1/2" Hose, Straight
13	1545132	Arm, Idler	43	1521392	Clamp, Hose
14	1522157	Bushing, Brass	44	1521500	Clamp, Vinyl Insulated Hold Down
15	1545135	Shaft, Idler Pivot	45	1550857-16	Hose, 16" Long
16	1545090	Spacer, Idler Pivot	46	1550862-14	Wire Loom, 14" Long
17	1545139	Washer, Idler Arm Retaining			
18	1560040	Hydro Idler Pulley Assembly			
--	1520827	Bearing			
--	1520865	Snap Ring, Internal			
--	1520880	Insert, Bearing			
--	1521879	Insert, Bearing, Shoulder			
--	1545140	Pulley, Backside Idler			
19	1520807	Spring, Extension			
20	1525290	Screw Hook			
21	1560020	Idler Pulley Assembly			
--	1520827	Bearing			
--	1520865	Snap Ring, Internal			
--	1520880	Insert, Bearing			
--	1521879	Insert, Bearing, Shoulder			
--	1545073	Pulley, Idler			
22	1560021	Backside Idler Pulley Assembly			
--	1520827	Bearing			
--	1520865	Snap Ring, Internal			
--	1520880	Insert, Bearing			
--	1521879	Insert, Bearing, Shoulder			
--	1545140	Pulley, Backside Idler			
23	1522062	Belt, Pump Drive			
24	1545136	Anchor, Spring Idler			
25	1545144	Support, Pulley			
26	1545087	Mount, Clutch Anchor			
27	1543636	Pad, Clutch Anti-rotational			
28	1545086	Anchor, Clutch			

Deck Lift Assembly



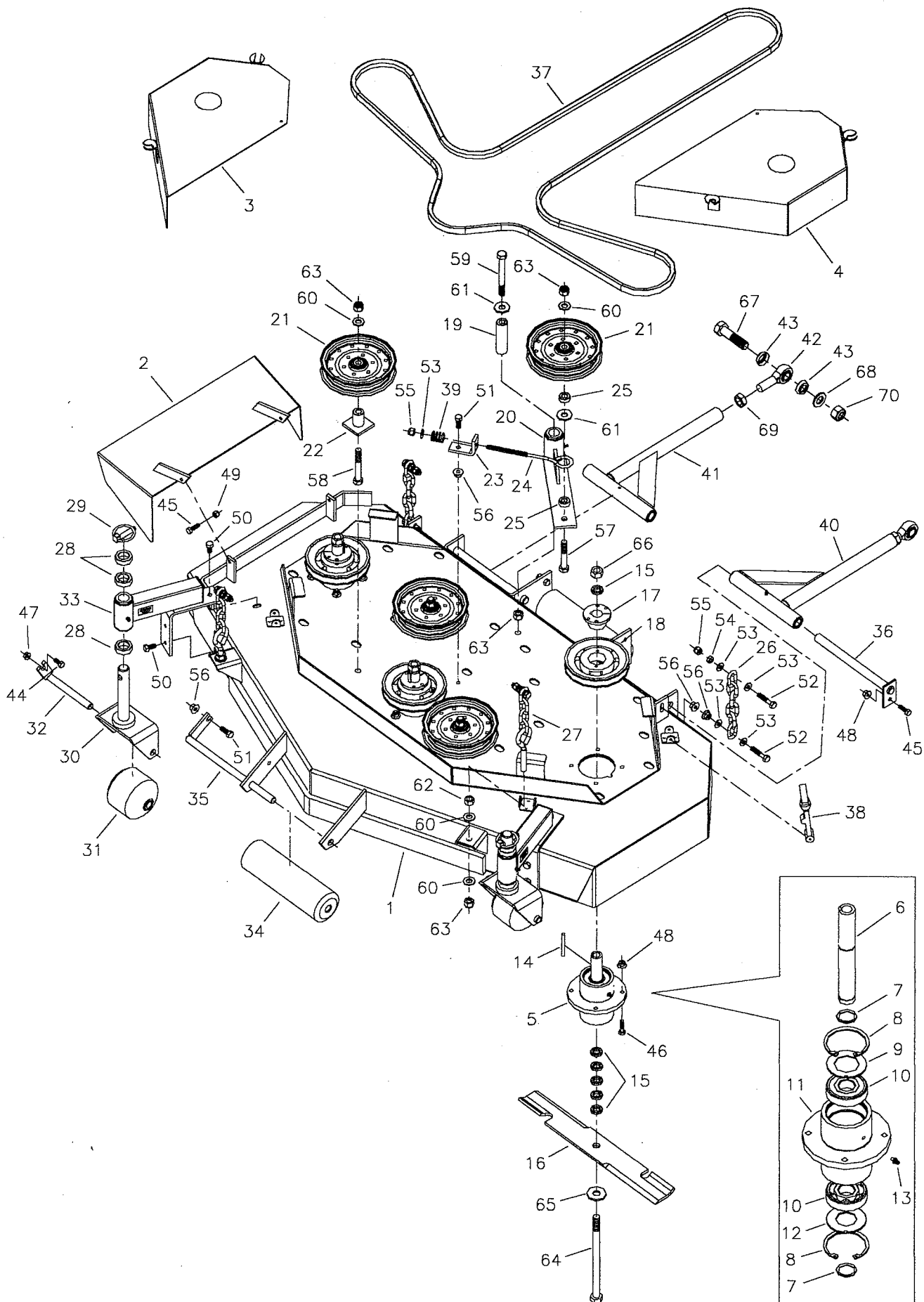
Deck Lift Assembly

REF. NO.	PART NO.	DESCRIPTION
1	-----	Frame, Main
2	1544904	Shaft, Front Lift
3	1544927	Lift Pivot-Left
4	1544928	Lift Pivot-Right (not shown)
5	*	Rod, Deck Lift Spring
6	*	Spring, Deck Lift
7	*	Collar, 5/8" Split
8	*	Ball Joint, 3/8-24 Male
9	*	Ball Joint, 3/8-24 LH Male
10	1544933	Spacer, Lift Ball Joint
11	1544987	Arm, Deck Lift Pivot
12	1560014	Foot Pedal Assembly
--	1544875	Pedal Safety Walk
13	1544999	Lock, Foot Pedal
14	8810580	Collar, 1/2" Set
15	1522044	Pin, 1/2" x 2-1/2" Clevis
16	1525210	Pin, Hair
17	1560029	Lift Plate Assembly
--	1522063	Decal, Lift Plate
18	1544992	Spacer, Lift Plate
19	8825515	Pin, 3/16" x 1" Roll
20	1522045	Pin, 1/2" x 3" Cotterless
21	1544993	Bolt, Lift Pivot
22	1544994	Link, Deck Lift
23	1522097	Cap, Plastic
24	1521728	Grease Fitting
25	8825013-10	Bolt, 3/8-16 x 1-1/4" GD.5
26	8825013-14	Bolt, 3/8-16 x 1-3/4" GD.5
27	1525013-22	Bolt, 3/8-16 x 2-3/4" GD.5
28	*	Nut, 3/8-24 Hex
29	8825096	Nut, 3/8-16 Hex Nylon Lock
30	1525018-24	Bolt, 1/2-20 x 3" GD.5
31	8825158	Washer, 1/2" SAE Flat
32	8825098	Nut, 1/2-20 Hex Nylon Lock
33	*	Washer, 5/8" USS Flat
34	1525282	Nut, 5/8-11 Hex Jam Nylon Lock
35	1521253	Shim, 1-1/2" OD x 1" ID
36	1560041	Deck Lift Spring Rod Assembly

NOTE:

All parts with an "*" listed as the part number is included in part #1560041, Deck Lift Spring Rod Assembly, and can not be ordered separately.

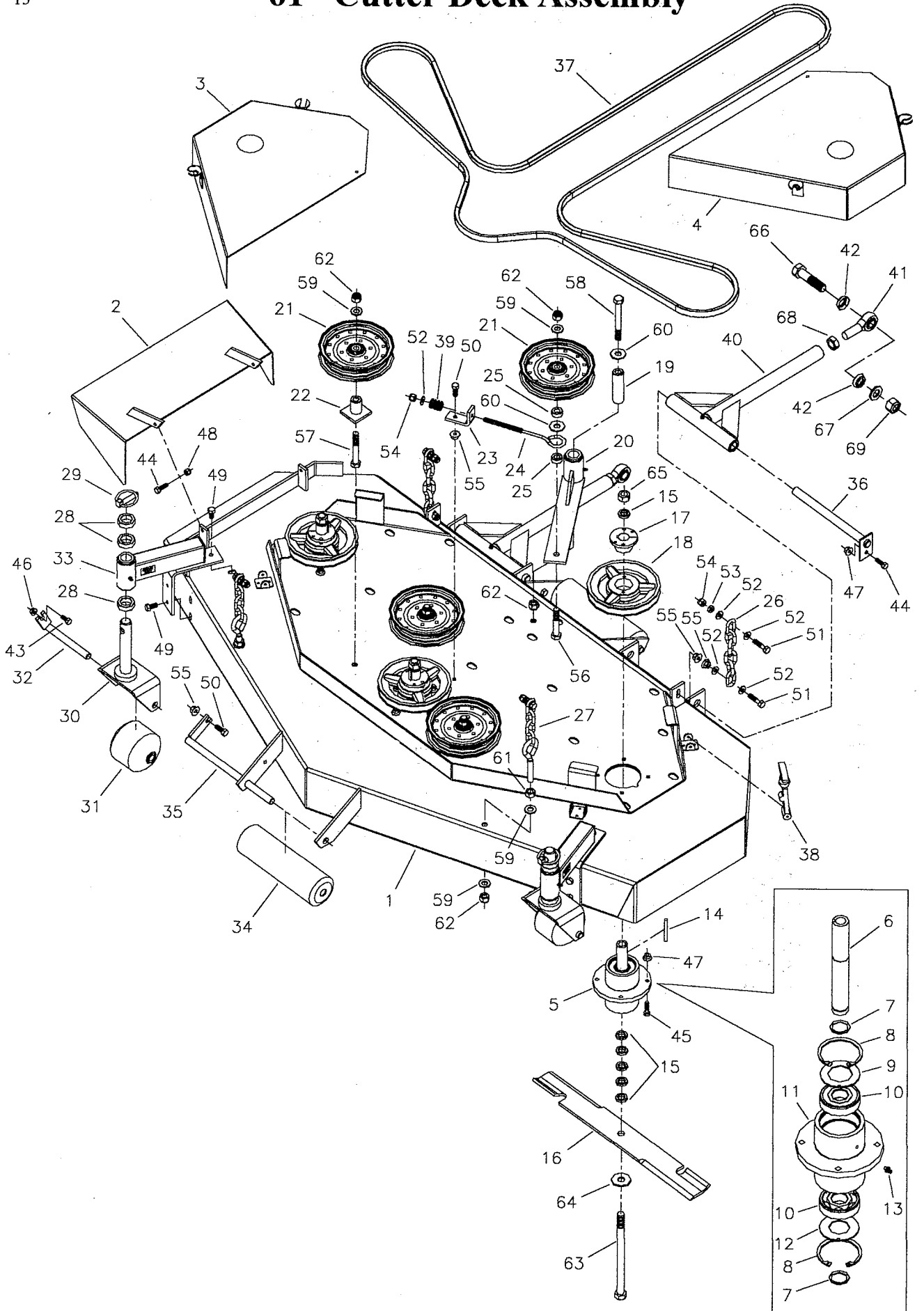
52" Cutter Deck Assembly



52" Cutter Deck Assembly

REF. NO.	PART NO.	DESCRIPTION	REF. NO.	PART NO.	DESCRIPTION
1	1545108	PCZ52 Cutter Deck	36	1545037	Shaft, Deck Mount
2	1541668	Chute, Discharge	37	1522148	Belt, Cutter Deck
3	1545111	Guard, Deck-Right	38	1520841-1	Latch, Rubber
4	1545112	Guard, Deck-Left	39	1521680	Spring
5	1530301	Spindle Assembly	40	1545103	Pusher Bar-Left
6	1541480	Shaft, Spindle	41	1545104	Pusher Bar-Right
7	1520864	Snap Ring, External	42	1522039	Ball Joint, 3/4-16 Male
8	1520866	Snap Ring, Internal	43	1522111	Seal, 3/4" Rod End
9	1541653	Spindle Washer-Top	44	8825011-6	Bolt, 5/16-18 x 3/4" GD.5
10	1520828	Bearing	45	8825011-8	Bolt, 5/16-18 x 1" GD.5
11	1530293	Housing, Spindle	46	1525011-10	Bolt, 5/16-18 x 1-1/4" GD.5
12	1541672	Spindle Washer-Bottom	47	8825127	Nut, 5/16-18 Small Serrated Flange
13	8820095	Grease Fitting	48	8825139	Nut, 5/16-18 Large Serrated Flange
14	8850407-9	Key, 1/4" Sq. x 2-1/2"	49	8825057	Nut, 5/16-18 Hex Nylon Lock
15	1541477	Spacer, Blade	50	8825013-6	Bolt, 3/8-16 x 3/4" GD.5
16	1521227	Blade, 18"	51	8825013-8	Bolt, 3/8-16 x 1" GD.5
17	1520819	Bushing, Tapered Hub	52	8825013-14	Bolt, 3/8-16 x 1-3/4" GD.5
18	1520814	Pulley, Spindle	53	8825156	Washer, 3/8" SAE Flat
19	1545022	Shaft, Idler Arm Pivot	54	8825084	Nut, 3/8-16 Hex Jam
20	1560032	Idler Arm Assembly	55	8825096	Nut, 3/8-16 Hex Nylon Lock
--	1521541	Bushing, Flange	56	8825128	Nut, 3/8-16 Serrated Flange
--	1521728	Grease Fitting	57	1525017-24	Bolt, 1/2-13 x 3" GD.5
--	1545106	Arm, Idler	58	1525017-28	Bolt, 1/2-13 x 3-1/2" GD.5
21	1521976	Pulley, Idler	59	1525017-36	Bolt, 1/2-13 x 4-1/2" GD.5
22	1545024	Mount, Idler	60	8825158	Washer, 1/2" SAE Flat
23	1542142	Anchor, Spring	61	1525150	Washer, 1/2" USS Flat
24	1521811	Eye Bolt, 3/8-16 x 8"	62	1525038	Nut, 1/2-13 Hex
25	1545023	Spacer, Idler	63	1525056	Nut, 1/2-13 Hex Nylon Lock
26	1550878-6	Chain, 6 Links	64	1525019-76	Bolt, 5/8-11 x 9-1/2" GD.5
27	1545026	Hanger, Front Deck	65	8825159	Washer, 5/8" USS Flat
28	1541476	Spacer, Caster	66	1525040	Nut, 5/8-11 Hex
29	8820655	Pin, Lynch	67	1525265-24	Bolt, 3/4-16 x 3" GD.5
30	1545188	Yoke, Caster Wheel	68	1525160	Washer, 3/4" SAE Flat
31	1522060	Roller, Caster	69	8825093	Nut, 3/4-16 Hex Jam
32	1545034	Pin, Caster Roller	70	1525284	Nut, 3/4-16 Hex Nylon Lock
33	1560054	Deck Caster Arm Assembly			
--	1521036	Decal, Grease Daily			
--	1521728	Grease Fitting			
--	1521541	Bushing, Flange			
--	1522098	Cap, Plastic			
34	1520785	Roller, Deck			
35	1541655	Pin, Roller			

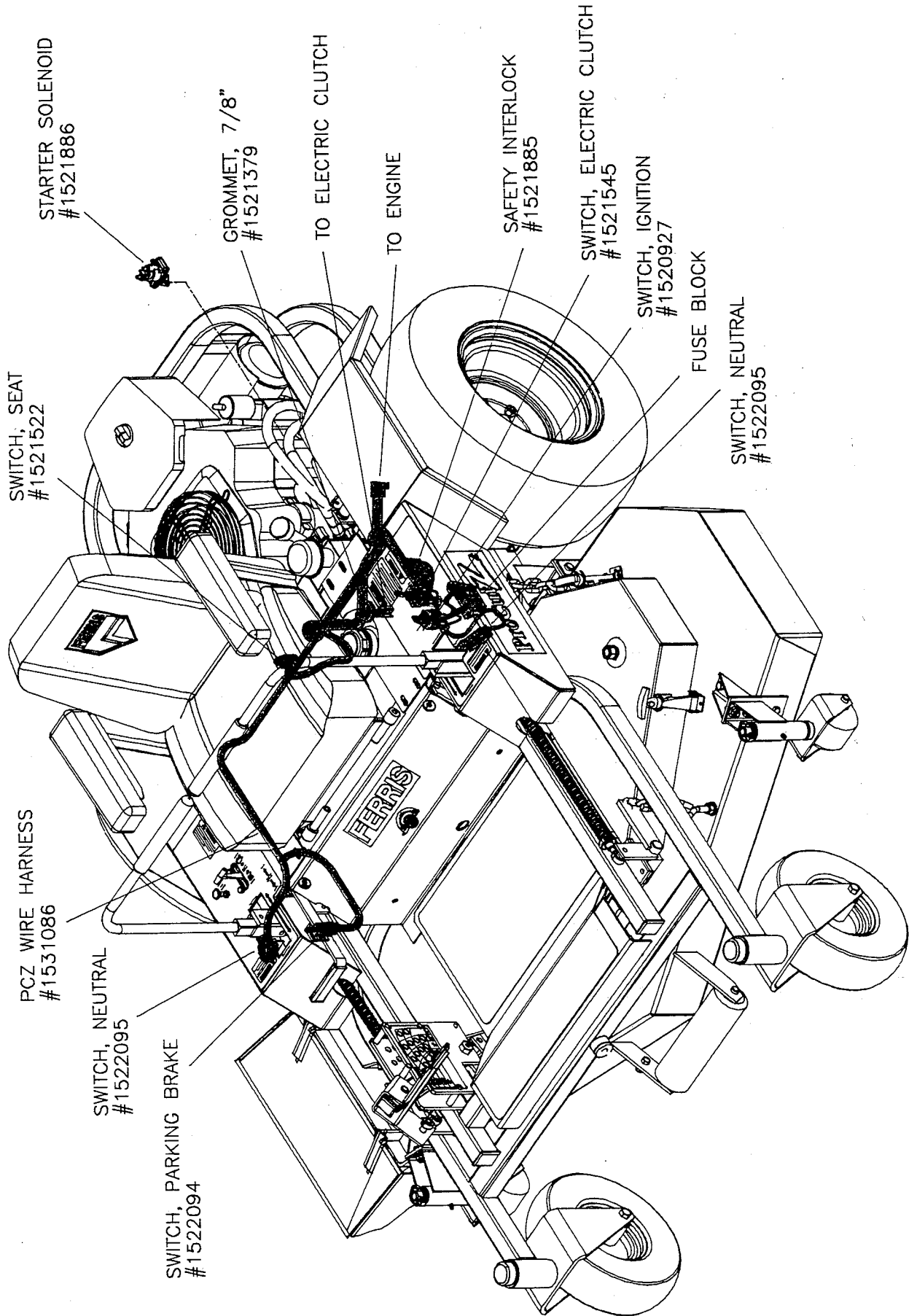
61" Cutter Deck Assembly



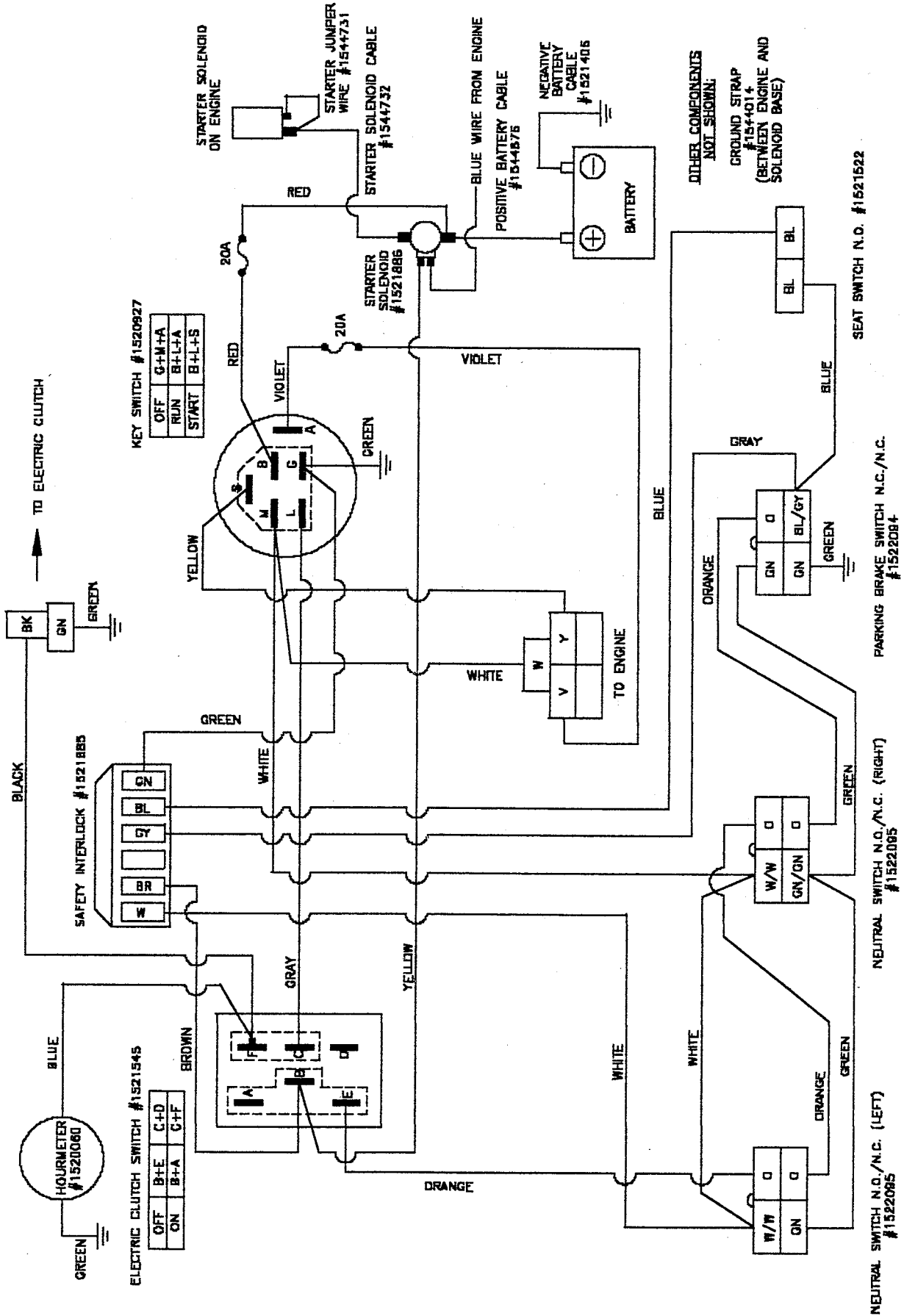
61" Cutter Deck Assembly

REF. NO.	PART NO.	DESCRIPTION	REF. NO.	PART NO.	DESCRIPTION
1	1545165	PCZ61 Cutter Deck	36	1545037	Shaft, Deck Mount
2	1541668	Chute, Discharge	37	1522061	Belt, Cutter Deck
3	1545040	Guard, Deck-Right	38	1520841-1	Latch, Rubber
4	1545042	Guard, Deck-Left	39	1521680	Spring
5	1530301	Spindle Assembly	40	1545009	Pusher Bar
6	1541480	Shaft, Spindle	41	1522039	Ball Joint, 3/4-16 Male
7	1520864	Snap Ring, External	42	1522111	Seal, 3/4" Rod End
8	1520866	Snap Ring, Internal	43	8825011-6	Bolt, 5/16-18 x 3/4" GD.5
9	1541653	Spindle Washer-Top	44	8825011-8	Bolt, 5/16-18 x 1" GD.5
10	1520828	Bearing	45	1525011-10	Bolt, 5/16-18 x 1-1/4" GD.5
11	1530293	Housing, Spindle	46	8825127	Nut, 5/16-18 Small Serrated Flange
12	1541672	Spindle Washer-Bottom	47	8825139	Nut, 5/16-18 Large Serrated Flange
13	8820095	Grease Fitting	48	8825057	Nut, 5/16-18 Hex Nylon Lock
14	8850407-9	Key, 1/4" Sq. x 2-1/2"	49	8825013-6	Bolt, 3/8-16 x 3/4" GD.5
15	1541477	Spacer, Blade	50	8825013-8	Bolt, 3/8-16 x 1" GD.5
16	1520842	Blade, 21"	51	8825013-14	Bolt, 3/8-16 x 1-3/4" GD.5
17	1520819	Bushing, Tapered Hub	52	8825156	Washer, 3/8" SAE Flat
18	1520815	Pulley, Spindle	53	8825084	Nut, 3/8-16 Hex Jam
19	1545022	Shaft, Idler Arm Pivot	54	8825096	Nut, 3/8-16 Hex Nylon Lock
20	1560001	Idler Arm Assembly	55	8825128	Nut, 3/8-16 Serrated Flange
--	1521541	Bushing, Flange	56	1525017-24	Bolt, 1/2-13 x 3" GD.5
--	1521728	Grease Fitting	57	1525017-28	Bolt, 1/2-13 x 3-1/2" GD.5
--	1545019	Arm, Idler	58	1525017-36	Bolt, 1/2-13 x 4-1/2" GD.5
21	1521976	Pulley, Idler	59	8825158	Washer, 1/2" SAE Flat
22	1545024	Mount, Idler	60	1525150	Washer, 1/2" USS Flat
23	1542142	Anchor, Spring	61	1525038	Nut, 1/2-13 Hex
24	1521811	Eye Bolt, 3/8-16 x 8"	62	1525056	Nut, 1/2-13 Hex Nylon Lock
25	1545023	Spacer, Idler	63	1525019-76	Bolt, 5/8-11 x 9-1/2" GD.5
26	1550878-6	Chain, 6 Links	64	8825159	Washer, 5/8" USS Flat
27	1545026	Hanger, Front Deck	65	1525040	Nut, 5/8-11 Hex
28	1541476	Spacer, Caster	66	1525265-24	Bolt, 3/4-16 x 3" GD.5
29	8820655	Pin, Lynch	67	1525160	Washer, 3/4" SAE Flat
30	1545188	Yoke, Caster Wheel	68	8825093	Nut, 3/4-16 Hex Jam
31	1522060	Roller, Caster	69	1525284	Nut, 3/4-16 Hex Nylon Lock
32	1545034	Pin, Caster Roller			
33	1560054	Deck Caster Arm Assembly			
--	1521036	Decal, Grease Daily			
--	1521728	Grease Fitting			
--	1521541	Bushing, Flange			
--	1522098	Cap, Plastic			
34	1520785	Roller, Deck			
35	1541655	Pin, Roller			

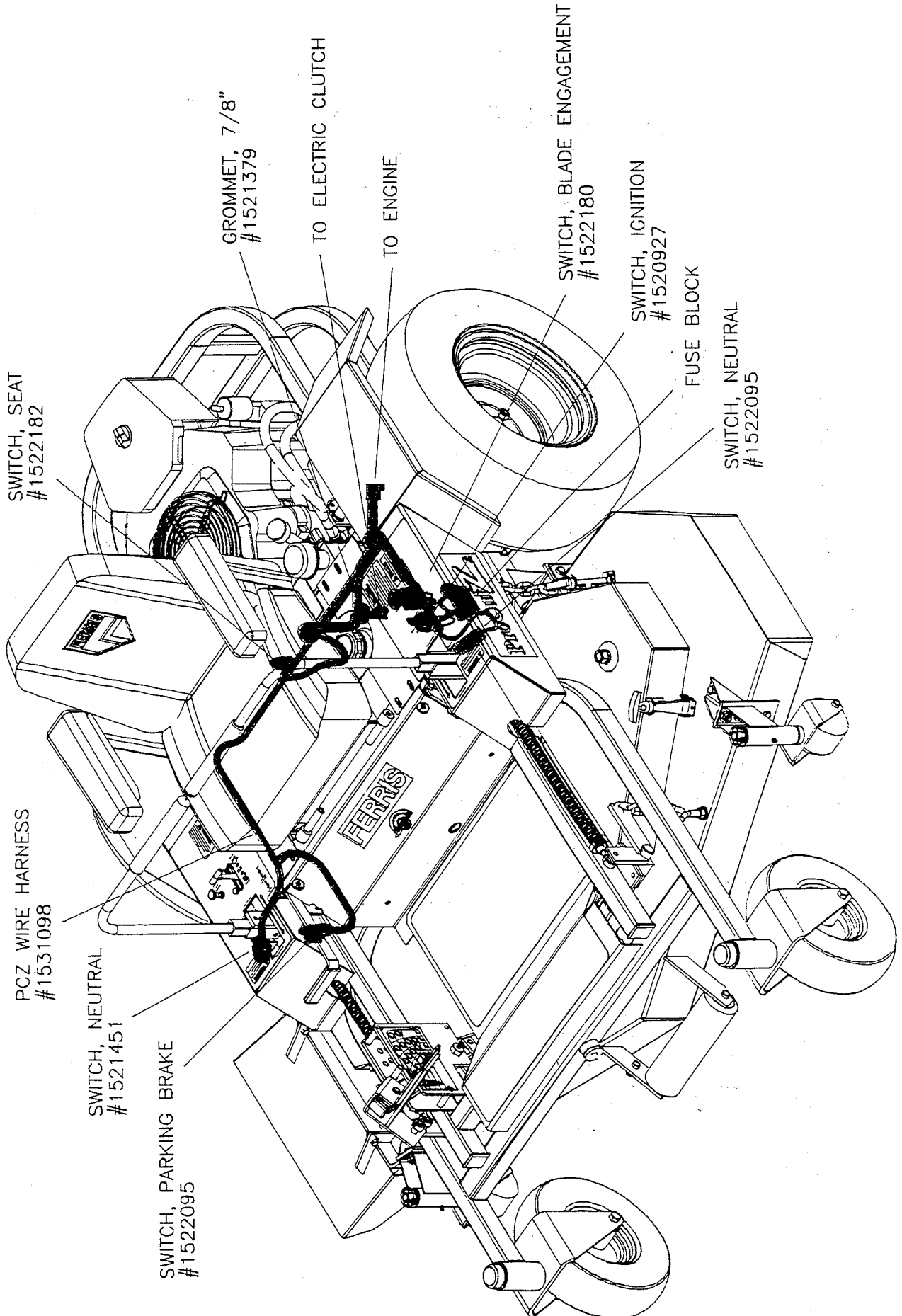
Electrical Layout



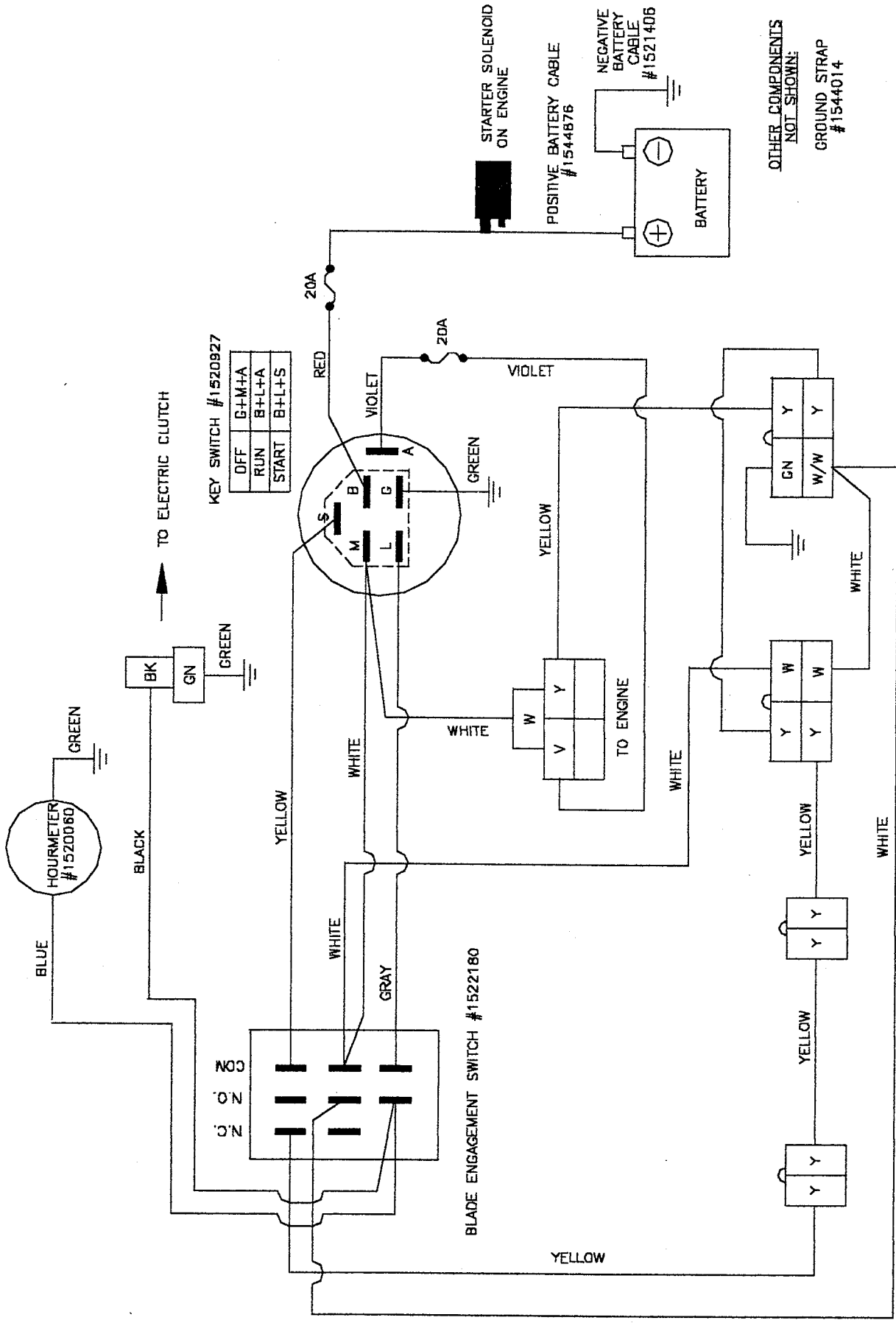
Electrical Schematic



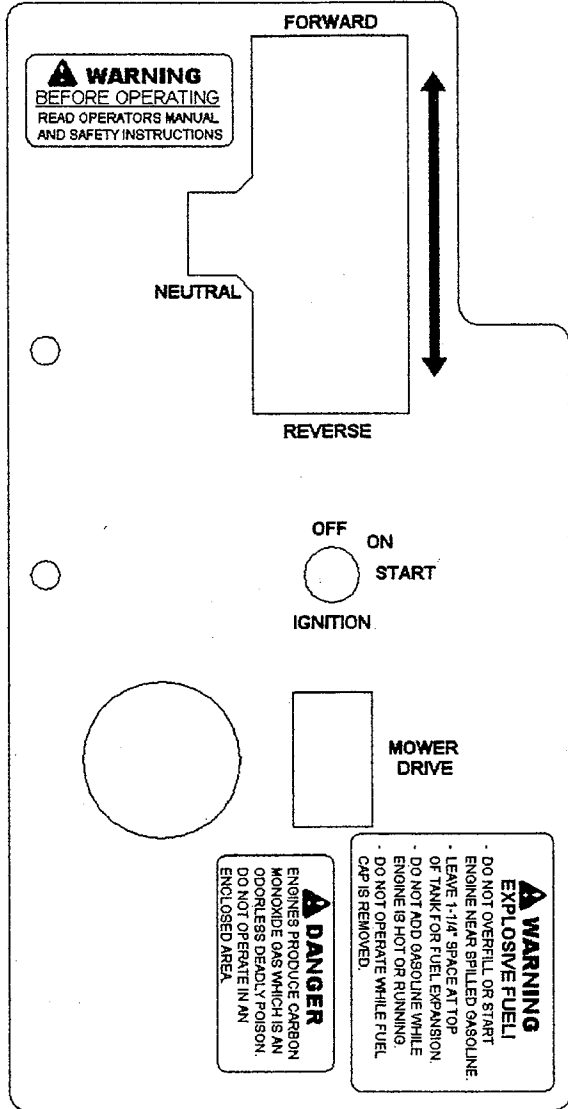
Electrical Layout SN: 701 & up



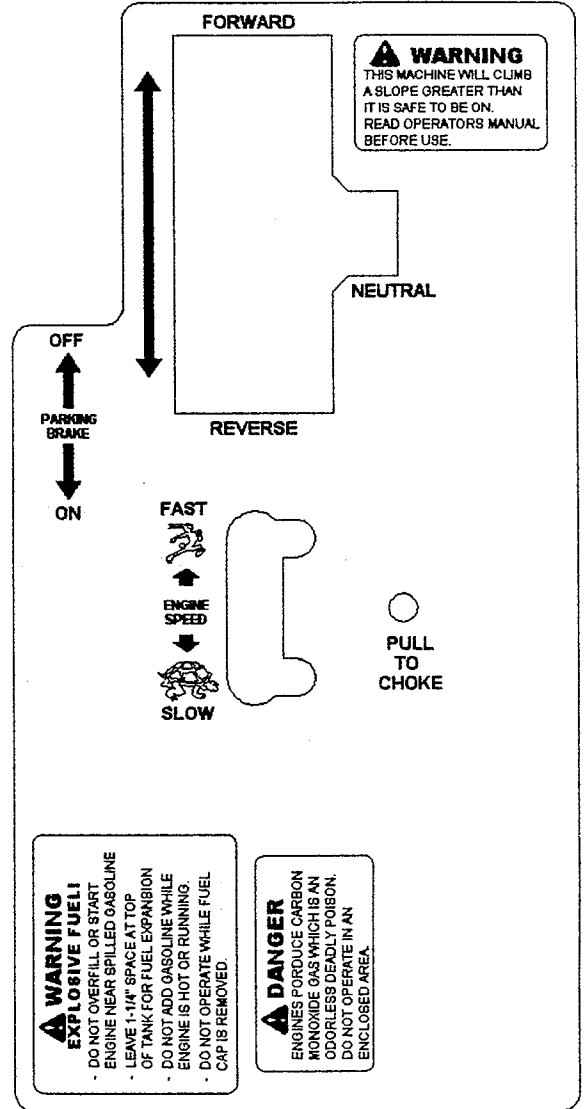
Electrical Schematic SN: 701 & up



Replacement Decals



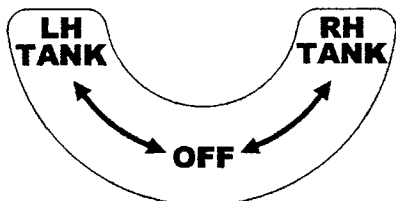
Decal, Control Panel-Left
1522065



Decal, Control Panel-Right
1522064



Decal, Ferris (Text Only)
1520849

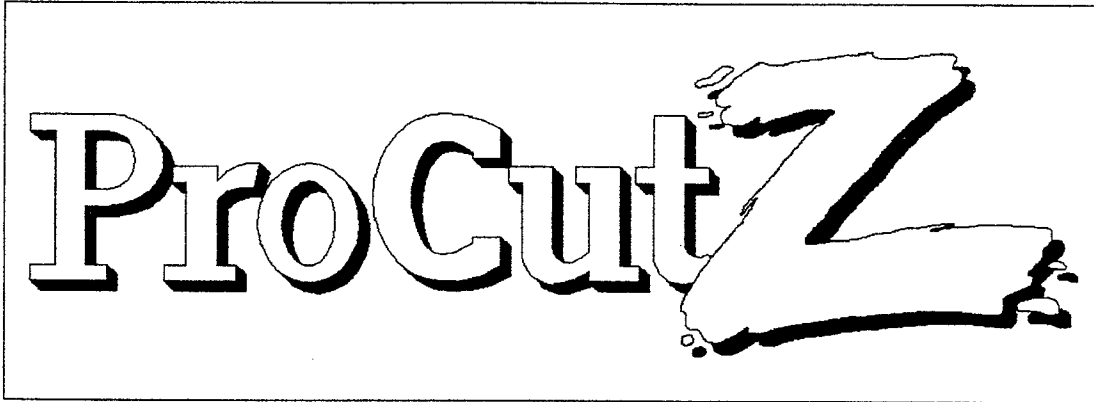


Decal, Fuel Shut Off
1522066

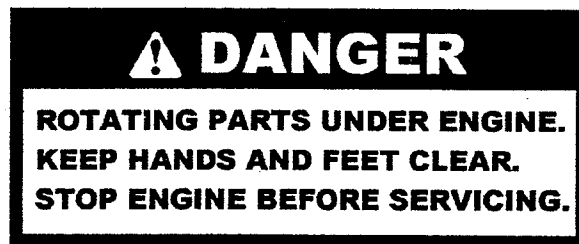


Decal, Danger-Keep Away
1520851

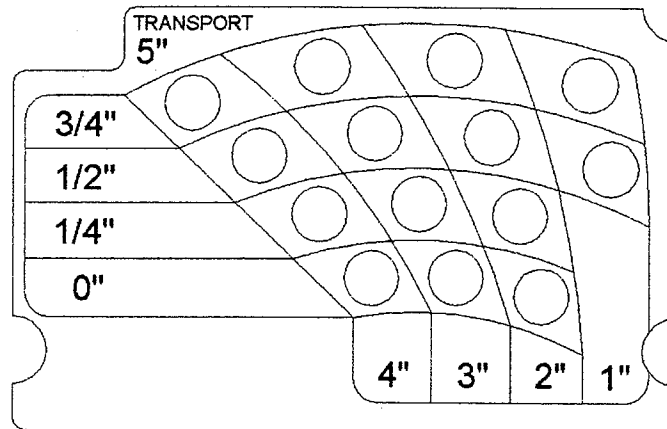
Replacement Decals



Decal, Pro Cut Z
1522145



Decal, Danger-Rotating
1522143



Decal, Lift Plate
1522063



Decal, Warning-Power
8820337

