

June 1993

TOPIC: EATON MODEL 850 TRANSMISSION

MODELS

AFFECTED: H1618, H1818, H1820, H2020 & H2520 3-WHEEL RIDERS

The Eaton Model 850 transmission is no longer available as a replacement part. The Eaton Model 851 transmission is to be installed in its place. To install the 851 transmission, the following parts must be ordered.

Qty.	Part No.	Description
1	22164	Eaton 851 Transmission
1	43339	Parking Brake Jack Shaft
1	21426	Connecting Link
1	43647	Pulley
1	43642	Bearing Mount
2	22165	Drive Hub

Installation Instructions

1. Remove the mower deck assembly. (optional)
2. Drain the oil from the hydraulic reservoir by removing the oil line from the reservoir or the bottom of the transmission.
3. Remove the parking brake jackshaft.
4. Scribe a line on each side of the pillow block bearing for proper alignment upon reinstalling the new transmission.
5. Remove transmission.
6. Drill two holes per Figure 1, page 2 to mount the new style parking brake jack shaft.
7. Transfer all components from the old transmission to the new one with the exception of the above listed parts.
8. Install the new transmission, attach all hoses and belts and fill the hydraulic reservoir 3/4 full with the recommended oil (see Owner's Manual).

Adjustments section on page 2.

REVISED / UPDATED COPY

Adjustments

1. Loosen both bolts on the control cable bracket located under the electric actuator.
2. Clamp the foot pedal down in the forward position.
3. Pull the cable bracket towards the right-hand side of the machine (from operator's position) and tighten bolts. Release the clamp from the foot pedal.
4. Remove the spring and pin from the parking brake linkage rod.
5. Jack up the engine deck and secure with jack stands.
6. Start the engine, disengage the parking brake and operate the foot pedal forward and reverse to bleed the air out of the hydraulic system.
7. Once bled, apply the parking brake and loosen the bolt on the neutral lock out arm. Move the arm from side to side until neutral is achieved (wheels stop spinning) and tighten bolt.
8. Reinstall the clevis pin and spring.
9. The parking brake lever arm must be fully released in the "OFF" position at the transmission. Adjust the clevis as needed.

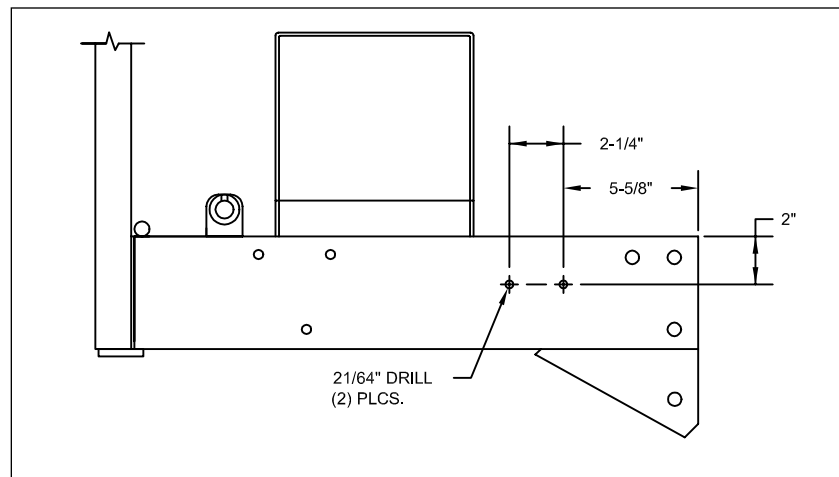


Figure 1. Drill Locations