

January 1995

### TOPIC: NEUTRAL RETURN SPRING REMOVAL

### MODELS

**AFFECTED: ALL DUAL DRIVES EQUIPPED WITH THUMB CONTROLS**

Any customer that wishes to remove the neutral return spring from the forward thumb controls for greater operator comfort. The following parts need to be ordered.

Qty.	Part No.	Description
1	21807	Bearing
2	25165	Washer, 3/8" Fender
1	44597	Lock Mount Plate
1	44958	Neutral Lock Plate
2	25010-6	Bolt, 1/4-20 x 3/4"
1	25096	Nut, 3/8-16 Nylon Lock
2	25126	Nut, 1/4-20 Serrated Flange
2	25154	Washer, 1/2" SAE

### Installation Instructions

1. Park the machine on a flat, level surface and engage the parking brake.
2. Remove the engine deck back plate and set aside.
3. Remove the high speed stop bolt and discard (see Figure 1).
4. Remove the return spring from the control arm and neutral stop bolt. If the neutral stop bolt is not reinstalled in exactly the same position, neutral may need to be adjusted (see owner's manual).
5. Loosely install the lock mount plate on the control arm (see Figure 1).
6. Install the neutral lock plate on the parking brake shaft and leave allen screws loose (see Figure 1). The parking brake shaft floats on the bearings at either end and must be pushed to the inside to allow for proper alignment of the lock plate and mount plate. (The shaft will have a tendency to move to the outside when the parking brake is applied.)
7. Align the top corner of the lock plate flush to 1/16" above the bearing and rest flush against washer, tighten allen bolts (see Figure 2).
8. Slide lock mount plate until bearing contacts the neutral lock plate and tighten bolts.
9. To test, remove the parking brake and push thumb controls all the way forward. (They will stay forward because the return spring has been removed.) Apply the parking brake. The thumb controls will return to neutral and should not move forward when pressure is applied. If they do, repeat Step #8. Double check the alignment of the top corner to the bearing. The lock plate should now fall in between the two washers, close to the middle of the bearing. If not, loosen the allen bolts and center.
10. Reinstall the engine deck back plate.



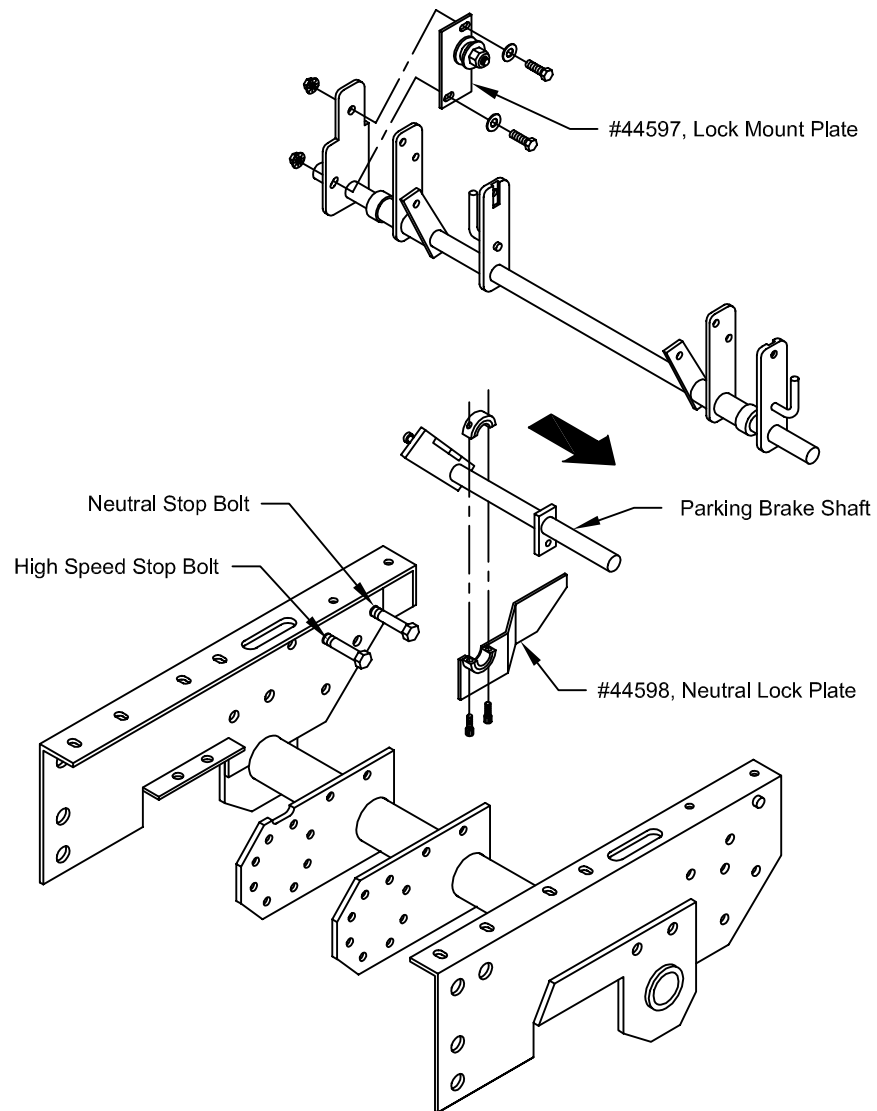


Figure 1

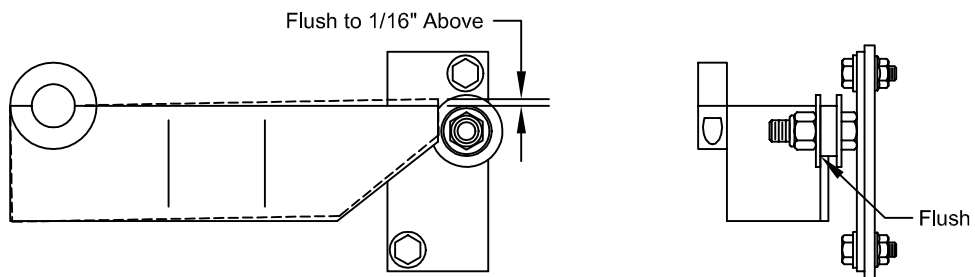


Figure 2