



### READ & ROUTE

Dealer \_\_\_\_\_ Service Technician \_\_\_\_\_ Parts Department \_\_\_\_\_  
 Service Mgr. \_\_\_\_\_ Service Technician \_\_\_\_\_ Sales Department \_\_\_\_\_

### TOPIC:

Deck Lift Spring Anchor Mounting Hardware Failure

### MODELS & SERIAL NUMBERS AFFECTED:

**Models:**  
IS4500Z Series

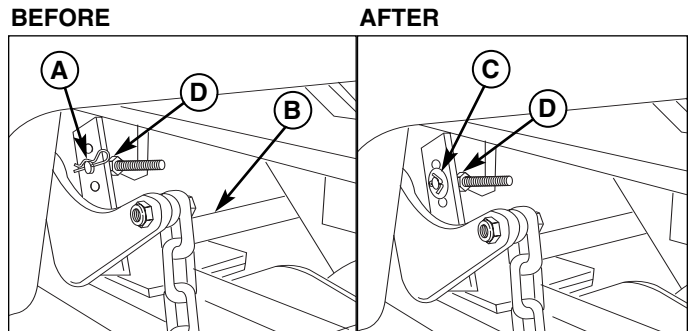
**Serial Numbers:**  
101 - 625

### SUBJECT:

Field complaints of the hair pin clip securing the deck lift spring anchors to the lift tabs are falling off of the unit during use. To correct this potential problem, updated hardware needs to be installed. All units listed in the above serial number range need to have the updated hardware installed. You will need to order the repair parts listed below for each unit to be updated.

### CORRECTIVE PROCEDURES:

1. Park the machine on a flat, level surface and engage the parking brake. Disengage the PTO switch, turn off the engine and remove the key from the ignition.
2. Raise mower deck until it locks in the 6" (15,2 cm) position.
3. Locate the rear deck lift shaft (B, Figure 1) under the fuel tanks.
4. Remove the hair pin clips (A) from the lift spring anchors (D). Discard the hair pin clips.
5. Install washers and cotter pins (C) as shown in Figure 1.



**Figure 1.**  
**A. Hair Pin Clip**  
**B. Rear Deck Lift Shaft**  
**C. Cotter Pin & Washer**  
**D. Lift Spring Anchor**

### WARRANTY INFORMATION:

**Failure Type:**

**Failure Code:**

**Cause of Failure:**

**Work Performed:** Repaired per Service Bulletin F081

Repair Parts:	Qty.	Part No.	Description
	2	5100146	3/8" Stainless Washer
	2	5025201X6	Cotter Pin

**Eligible for Pickup and Delivery Reimbursement If Performed:**

No

**Total Hours:**

0.3