



**F099**

SERVICE BULLETIN

**JULY 2008**

**New Hardened Washer Available to Prevent Over-Tightening of Blade Mounting Bolt While Unit is in Use**

<b>MODELS AFFECTED</b>			
<b>Brands</b>	<b>Part Nos.:</b>	<b>Serial No. Range:</b>	<b>Description:</b>
Ferris	All	2013044710 & Below	IS500Z Ferris Zero-Turn Riding Mowers
Ferris	All	2013044710 & Below	IS1500Z Series Zero-Turn Riding Mowers
Ferris	All	2013044710 & Below	IS2000Z Series Zero-Turn Riding Mowers
Ferris	All	2013044710 & Below	IS3100Z Series Zero-Turn Riding Mowers
Ferris	All	2013044710 & Below	IS4500Z Series Zero-Turn Riding Mowers
Ferris	All	2013044710 & Below	IS5100Z Series Zero-Turn Riding Mowers
Ferris	All	2013044710 & Below	ProCut S Series Three Wheeled Riding Mowers
Ferris	All	2013044710 & Below	HydroCut Series Walk Behind Mowers
Ferris	All	2013044710 & Below	Comfort Control DD Series Walk Behind Mowers

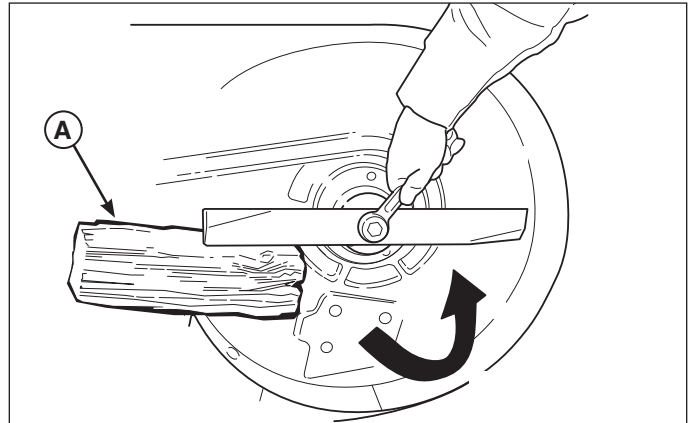
**DETAIL**

Field reports indicate that units within the serial number range listed above could potentially have a material issue with the blade washer that could cause extreme over-tightening of the blade mounting bolts used to secure the mower blades to the unit.



**CORRECTIVE PROCEDURES**

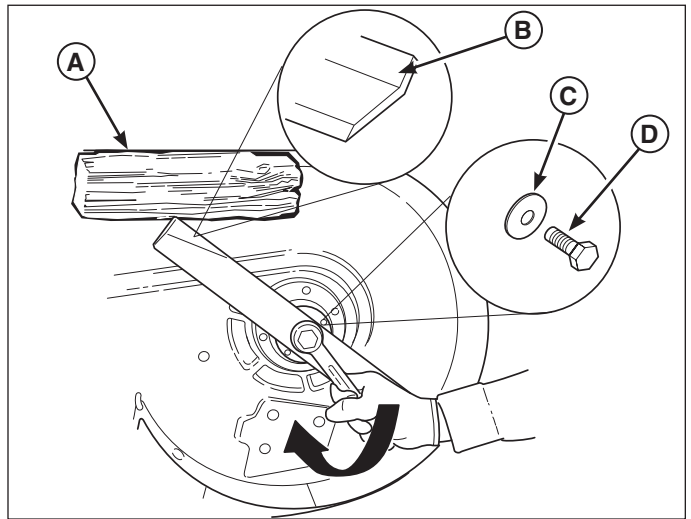
1. If your unit falls within the serial number range listed above, order a quantity of two (2) 5025477 - "Washer, 5/8" Grade 8" (HydroCut models), or three (3) 5025477 - "Washer, 5/8" Grade 8" (all other models).
2. Park the machine on a flat, level surface. Disengage the PTO, engage the parking brake, stop the engine and remove the key from the ignition.
3. Wedge a wooden block (A, Figure 1) between the mower blade and the mower deck housing to prevent the blade from turning.



**Figure 1. Remove the Blade Mounting Bolt  
A. Wooden Block**

<b>⚠ WARNING</b>	
	<b>Avoid injury! Mower blades are sharp.</b>
Always wear gloves when handling mower blades or working near blades.	

4. Remove the blade mounting bolt and blade mounting washer that secure the mower blade to the spindle. Discard the existing blade mounting washers.
5. Wedge a wooden block (A, Figure 2) between the mower blade and the mower deck housing to prevent the blade from turning.
6. Reinstall the mower blade to the spindle with the air lifts pointing up toward the mower deck (B) using the new 5025477 washer (C) that you ordered. Secure with the blade mount bolt (D) removed in Step 3.
7. Torque the blade mounting bolt to 70 ft. lbs (90 Nm).



**Figure 2. Reinstall the Mower Blade  
A. Wooden Block  
B. Air Lifts Pointing Up  
C. 5025477 Washer  
D. Blade Mounting Bolt**

**WARRANTY INFORMATION**

Fill in the Warranty Claim Form with the following information.

Failure Location Category:	L & G Deck/Att.
Defective Part ID Code:	Spindle/Arbor F70
Defect Code:	PM
Control Number:	F099
Pickup & Delivery:	N/A
Total Hours:	0.5

Cause of Failure:	F099
Work Performed:	F099
Repair Parts:	5025477 Qty: 2 (HydroCut Models); 5025477 Qty: 3 (all other models)

WO 0XXXX