

SERVICE**BULLETIN****SB #:** F111**BRANDS:****DATE:** APRIL 2012**TO:** ALL AUTHORIZED FERRIS DEALERS**SUBJECT:** CORRECTING THE CLUTCH STACK-UP FOR APPROPRIATE CLUTCH RETENTION**MODELS:** SEE LIST BELOW

Brand	Model Numbers	Serial Number Range	Description
Ferris	5900588 & 5900589	2015381309 - 2015388314	IS1500Z Series Zero-Turn Riding Mower

DESCRIPTION

This bulletin details an update that must be performed to IS1500Z Series zero-turn riding mowers to correct the clutch stack-up for appropriate clutch retention.

CORRECTIVE PROCEDURES

1. Order components:

Part Number	Description	Quantity:
5044062	Spacer, 1.13 X 1.75 X .50	1
5102864	Bolt, Crankshaft, 7/16-20 X 2-1/2, GD8	1
5025585	Belleville Washer, 1.1875 X .442 X .089	2

2. Park the machine on a flat level surface such as a concrete floor. Engage the parking brake, disengage the PTO, turn off the ignition and remove the key.
3. Lower the mower deck to its lowest cutting position and remove the mower deck guards.
4. Using a 1/2" breaker bar, place the square end in the square hole located in the end of the idler arm (**A, Figure 1**). Carefully rotate the breaker bar **clockwise**, which will relieve the tension on the belt exerted from the idler arm.
5. Slide the mower deck drive belt (**B**) over the edge of the rear stationary idler pulley (**C**). Carefully release the tension on the breaker bar.
6. Remove the mower deck drive belt from the PTO clutch (**A, Figure 2**).
7. Remove the nut (**B**) that secures the clutch anchor bolt (**C**) to the PTO clutch.
8. Remove the crankshaft bolt (**D**) from the PTO clutch. Discard the crankshaft bolt.

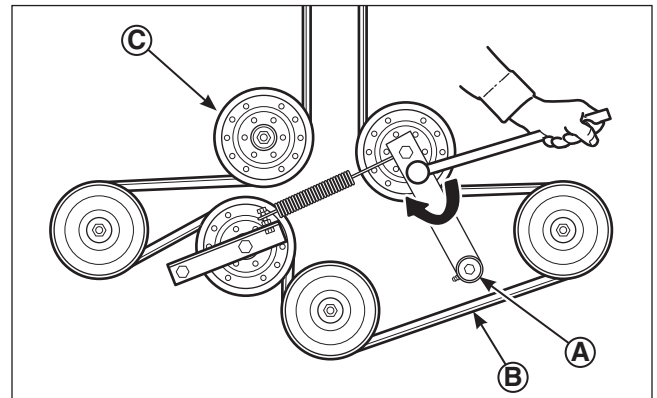


Figure 1. Removing the Mower Deck Drive Belt

9. Remove the PTO clutch and spacer (E) from the unit. Discard the spacer.
10. Install the new spacer (p/n 5044062)(F) onto the crankshaft with the groove towards the base of the engine.
11. Reinstall the PTO clutch onto the crankshaft and make sure that the clutch anchor bolt lines up with the slot in the PTO clutch that it was removed from.
12. Use a solvent to clean the oil from the new crankshaft bolt (p/n 5102864)(G) and then wipe dry with a cloth.
13. Apply Locktite 271 Threadlocker to the threads of the crankshaft bolt and secure the PTO clutch to the crankshaft with the crankshaft bolt and two belleville washers (p/n 5025585)(H) arranged with their domes facing down. Torque the crankshaft bolt to 65 ft lbs (88 Nm).
14. Install the 5/16-18 hex nylock flange nut (B) to secure the clutch anchor bolt to the PTO clutch.
15. Reinstall the mower deck drive belt (A, Figure 3) on the PTO clutch and check that the V-side of the belt runs in the pulley grooves and the belt is routed in the spindle pulleys (B) and all idler pulleys (C) except the rear stationary idler pulley (D).
16. Carefully rotate the breaker bar **clockwise** and install the belt on the rear stationary idler pulley.
17. Carefully release the tension on the breaker bar.
18. Reinstall the mower deck guards.

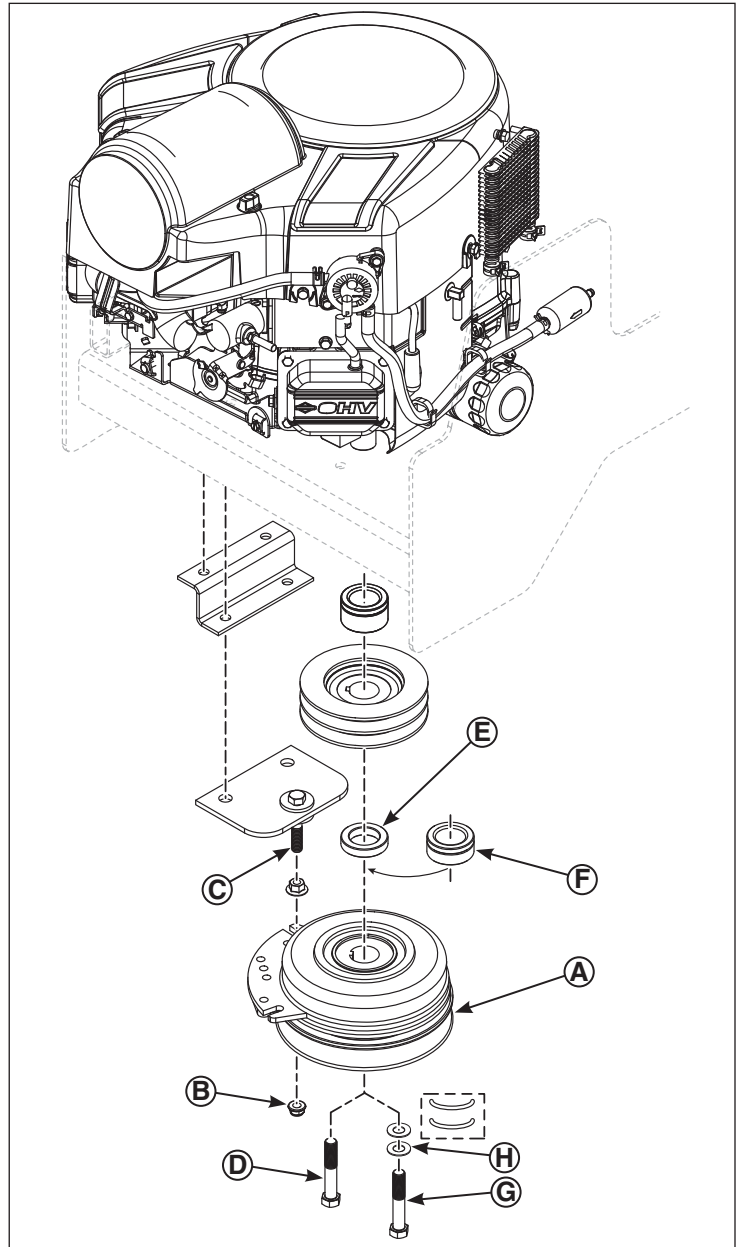


Figure 2. Replacing the Spacer and Crankshaft Bolt / Adding Belleville Washers

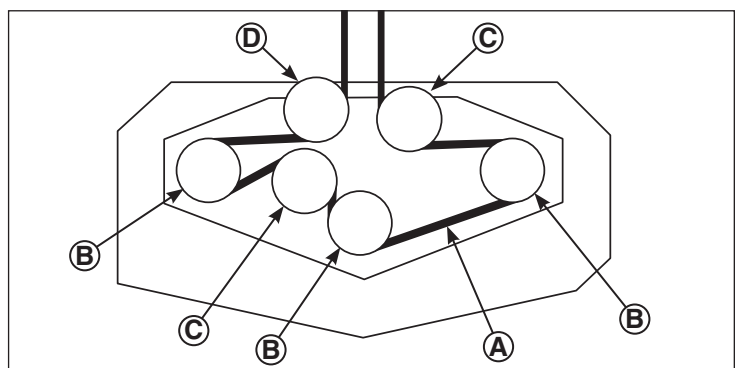


Figure 3. Reinstalling the Mower Deck Drive Belt

WARRANTY:

File for warranty reimbursement using e-Claim at www.ThePowerPortal.com. Use the values listed below when filling out the claim. The information in the "Brand" block indicates which tab the claim should be filed under. *Note: File only one unit per claim form.*

Brand	Ferris		
Failure Location Category	L&G - Engine	Cause of Failure	F111
Failure Location Code	F63	Work Performed	F111
Defect Code/Failure Mode	AW	Repair Parts Used	5044062 (Qty: 1)
Control/Evaluation Number	F111		5102864 (Qty: 1)
Pick-Up & Delivery	N/A		5025585 (Qty: 2)
Total Hours (Tenths):	0.6		

BRIGGS & STRATTON POWER PRODUCTS GROUP, LLC
Distribution Sales & Customer Support